

# Eastern Parkway - Transit Priority Proposal

## *B14 from Schenectady Avenue to Ralph Avenue*

Draft Proposal – Brooklyn Community Board 9

April 9, 2025



# Outline

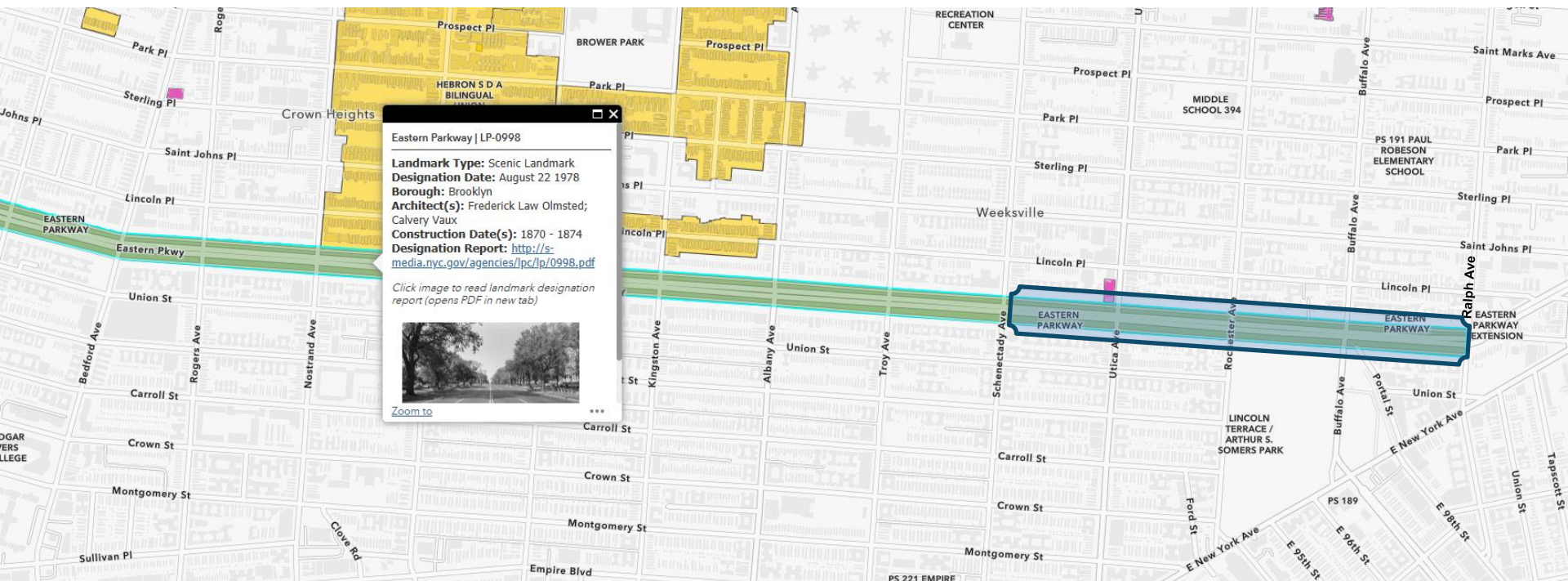
---

- Introduction
- Existing Conditions
- Project Proposal

# Introduction

# Overview

- Eastern Parkway was envisioned by Frederick Law Olmsted & Calvert Vaux in 1866.
- Designated as a scenic landmark in 1978.



Map of NYC Landmarks

 = Project Area



# Transportation Along Eastern Parkway

---

- Bus service began in 1925 by Eastern Parkway, Brownsville & East New York Transit Relief Association.
- 3,000+ people board B14 or B17 at Eastern Parkway & Utica Avenue every weekday.
- Buses were routed to use the service road to drop off passengers.
- NYC Parks maintains pedestrian malls.
- NYC DOT maintains roadway.
- Past Projects Along Eastern Parkway
  - 2017 to 2024: Service Road Signalization & Safety Improvements



Eastern Parkway circa 1902-1906

# Existing Conditions

# Current Eastbound B14 Bus Operations

- Eastbound B14 bus operators use the mainline to avoid traffic congestion and double parking along the service road, specifically at Utica Avenue.
- Some B14 buses will then try to turn back onto the service road at Rochester Avenue.
- Improved performance on B14 since moving to the main line.
- B14 stop signage was never moved to formalize this operational change.



Eastern Parkway at Utica Av, looking west. Eastbound B14 on the main line

# Current Sidewalks & Pedestrian Malls

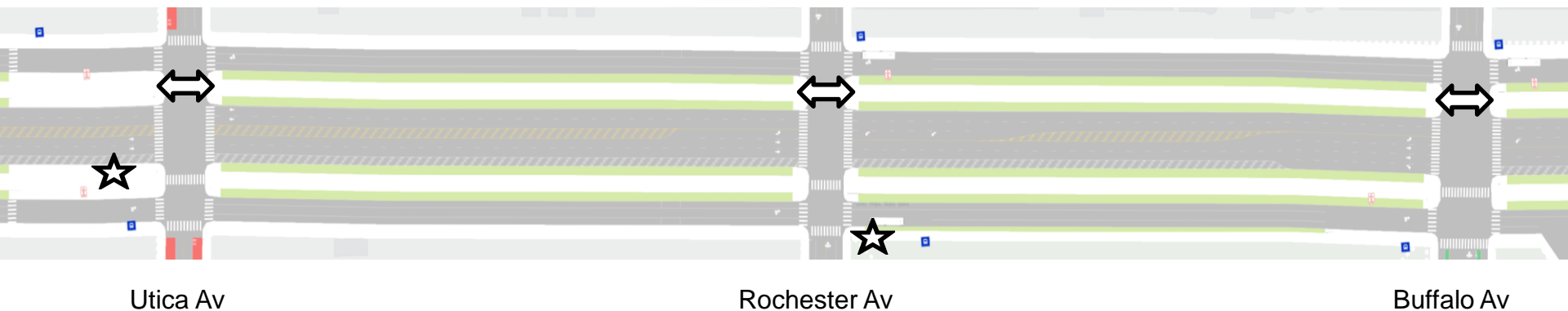
- Existing eastbound service road bus stop is inaccessible at Rochester Avenue due to strip of grass between sidewalk and curb.
- Planting or rough paver strips on pedestrian malls requires ADA improvements for main-line bus operations.
- Missing ADA ramps connecting northern pedestrian malls.



Existing North Mall (no ramps)

## Existing Conditions

★ = Inaccessible Bus Stops  
↔ = Inaccessible Ramps

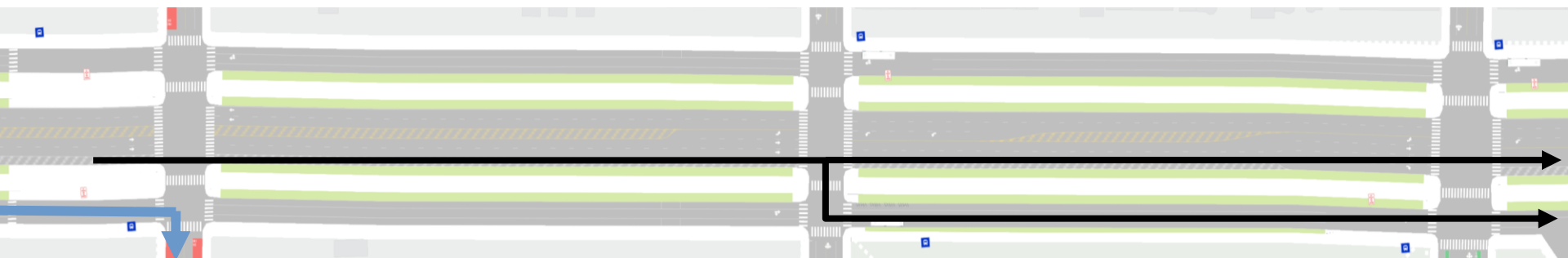




# Existing Eastbound Bus Routing

## B14 Bus Stops

- Eastern Parkway Main Line/ Utica Avenue (informal / unsigned)
- Eastern Parkway Service Road/ Rochester Avenue
- Eastern Parkway Service Road/ Buffalo Avenue



Utica Av

Rochester Av

Buffalo Av

→ = Current Informal B14 Bus Route

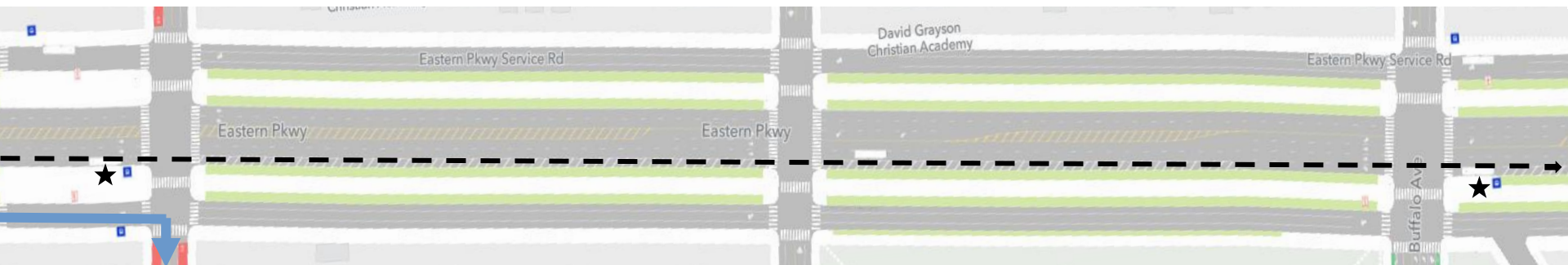
→ = Current B17 Bus Route

# Project Proposal

# Proposed Eastbound Bus Routing

## B14 Bus Stops

- Eastern Parkway Main Line/ Utica Avenue
- Eastern Parkway Main Line/ Buffalo Avenue



Utica Av

Rochester Av

Buffalo Av

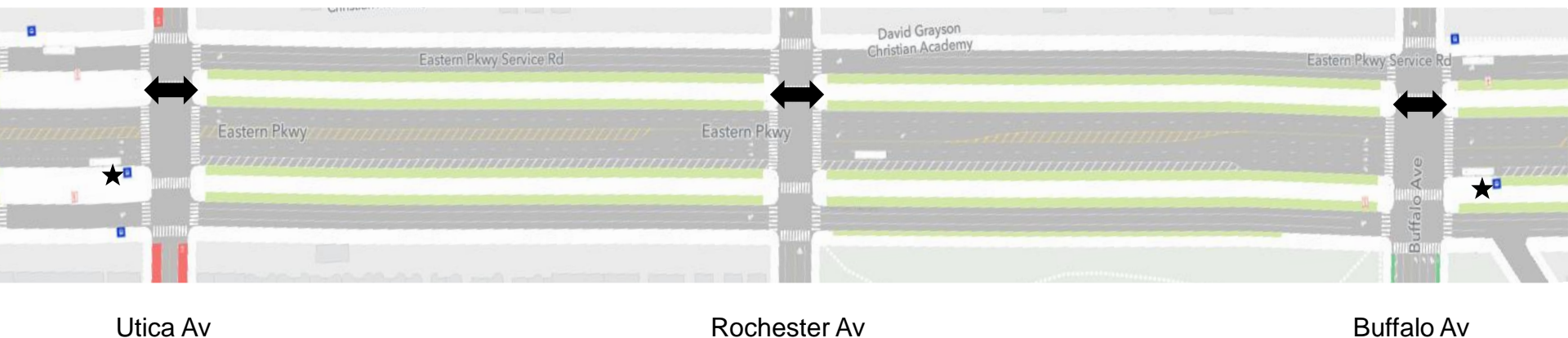
- ★ = Proposed ADA Bus Stops
- - -> = Proposed B14 Bus Route
- = B17 Bus Route

# Schenectady Avenue to Ralph Avenue

- Relocate B14 bus stops to the southern pedestrian malls.
  - Replace current landscaping with hexagon pavers or smooth granite pavers, to make bus stops accessible.
- Retain existing eastbound right turn bays at Buffalo Avenue and Ralph Avenue.
- Proposed removal of the bus stop at Rochester Avenue.
- Install ADA ramps connecting northern pedestrian malls.

## Proposed Conditions

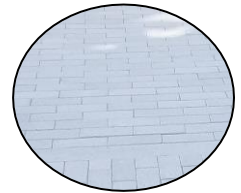
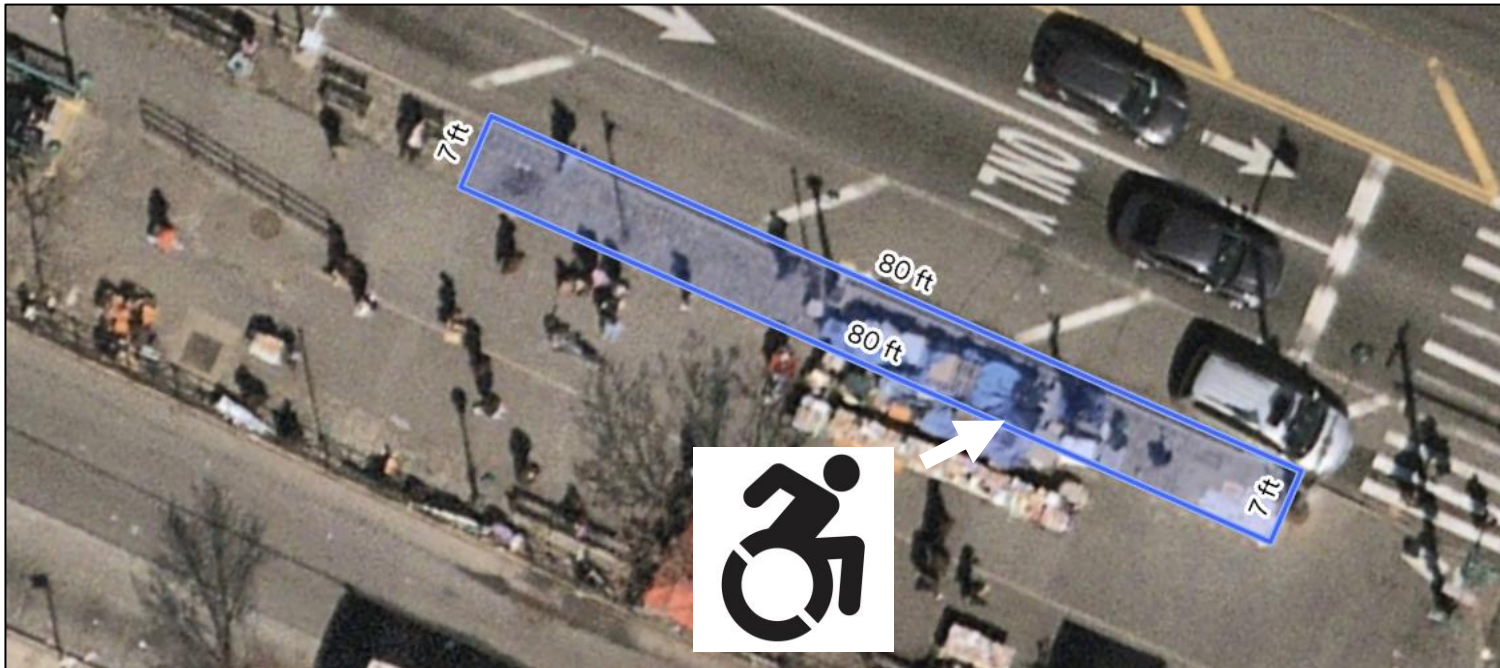
★ = Proposed ADA Bus Stops  
↔ = Proposed ADA Ramps





# Proposed Materials at South Mall, West of Utica Avenue

- Replace rough granite blocks with hexagon pavers or smooth granite pavers.
  - Creates ADA accessible bus stop.
- Design would accommodate two buses at the bus stop at any time.
- No existing trees, above subway station.



Smooth  
Granite Pavers



Hexagon  
Asphalt Pavers

# Proposed Materials at South Mall, East of Buffalo Avenue

- Coordinating with Parks Department to transplant a young tree to create a bus stop to serve passengers. Other existing trees nearby to remain in place.
- Replace grass with hexagon pavers or smooth granite pavers to create ADA accessible bus stop.



Existing Tree to be Transplanted



Smooth  
Granite Pavers



Hexagon  
Asphalt Pavers



# Example of Pavers at Bus Stops

---



DeKalb Ave and S Portland Ave  
(Fort Greene, Brooklyn)  
Smooth Hexagon Pavers



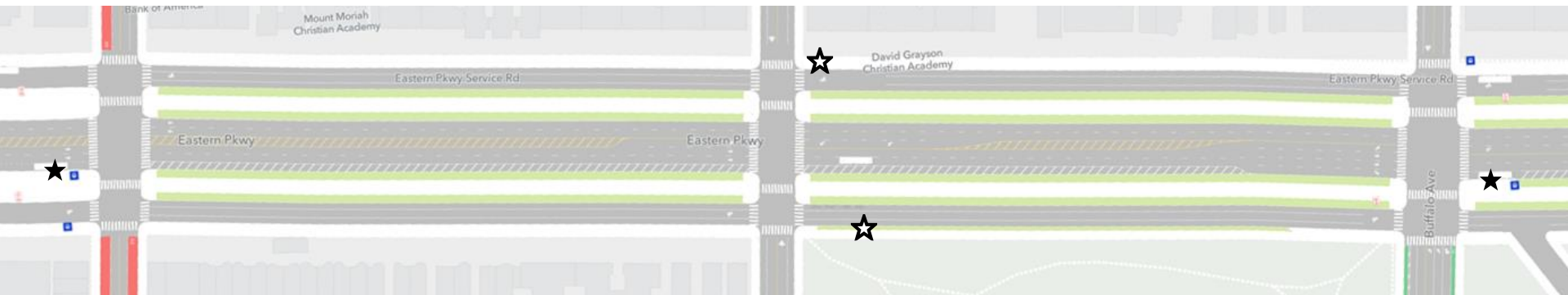
5<sup>th</sup> Ave and 87<sup>th</sup> St  
(Central Park, Manhattan)  
Smooth Granite Pavers and Hexagon Pavers

# Rochester Avenue Bus Stop

- Proposed to remove the B14 bus stops at Rochester Avenue for bus stop balancing, which would increase bus speeds and travel time.
- Project allows for reuse of curb space at three service road locations.
- DOT coordinated with MTA's Brooklyn Bus Network Redesign Team on proposed removal.

## Proposed Conditions

★ = Proposed ADA Bus Stop  
☆ = Proposed Bus Stop Removal



Utica Av

Rochester Av

Buffalo Av



# Opportunities for Repurposing Bus Stops



Carshare



Bike Corrals



Metered Parking



Truck Loading Zones

# Thank You!

---

## Questions?



NYC DOT



NYC DOT



nyc\_dot



NYC DOT