

Eastern Parkway - Transit Priority Proposal

B14 from Schenectady Avenue to Ralph Avenue

Draft Proposal – Brooklyn Community Board 8

April 10, 2025



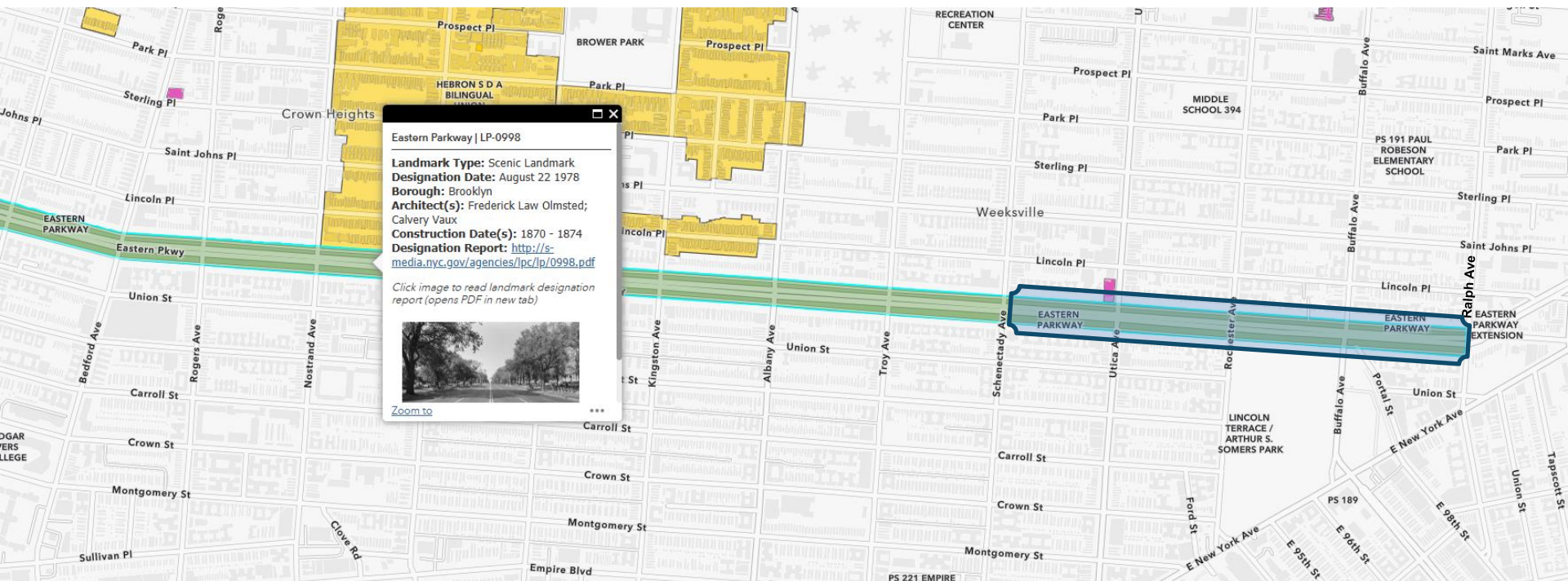
Outline

- Introduction
- Existing Conditions
- Project Proposal

Introduction

Overview

- Eastern Parkway was envisioned by Frederick Law Olmsted & Calvert Vaux in 1866.
- Designated as a scenic landmark in 1978.



Map of NYC Landmarks

 = Project Area

Transportation Along Eastern Parkway

- Bus service began in 1925 by Eastern Parkway, Brownsville & East New York Transit Relief Association.
- 3,000+ people board B14 or B17 at Eastern Parkway & Utica Avenue every weekday.
- Buses were routed to use the service road to drop off passengers.
- NYC Parks maintains pedestrian malls.
- NYC DOT maintains roadway.
- Past Projects Along Eastern Parkway
 - 2017 to 2024: Service Road Signalization & Safety Improvements



Eastern Parkway circa 1902-1906

Existing Conditions

Current Eastbound B14 Bus Operations

- Eastbound B14 bus operators use the mainline to avoid traffic congestion and double parking along the service road, specifically at Utica Avenue.
- Some B14 buses will then try to turn back onto the service road at Rochester Avenue.
- Improved performance on B14 since moving to the main line.
- B14 stop signage was never moved to formalize this operational change.



Eastern Parkway at Utica Av, looking west. Eastbound B14 on the main line

Current Sidewalks & Pedestrian Malls

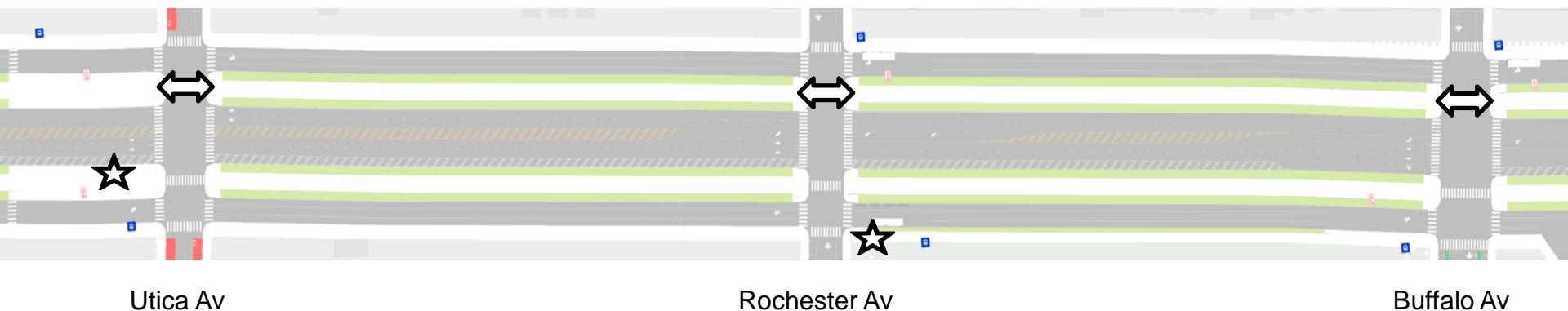
- Existing eastbound service road bus stop is inaccessible at Rochester Avenue due to strip of grass between sidewalk and curb.
- Planting or rough paver strips on pedestrian malls requires ADA improvements for main-line bus operations.
- Missing ADA ramps connecting northern pedestrian malls.



Existing North Mall (no ramps)

Existing Conditions

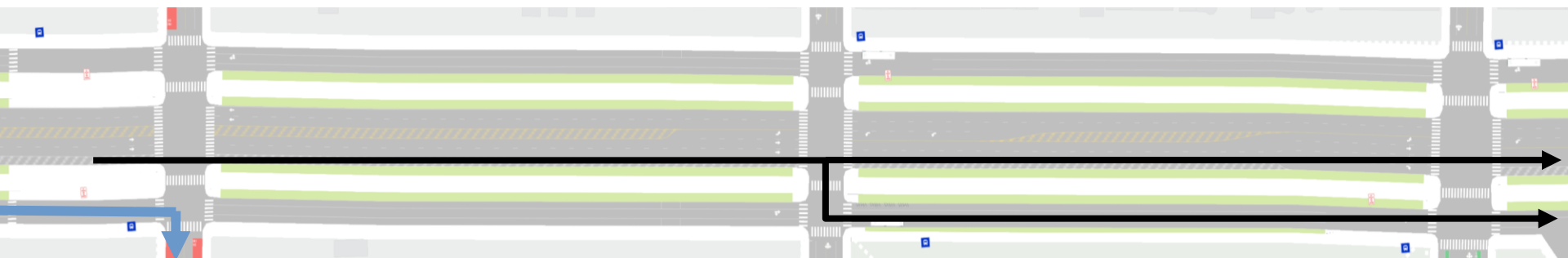
★ = Inaccessible Bus Stops
↔ = Inaccessible Ramps



Existing Eastbound Bus Routing

B14 Bus Stops

- Eastern Parkway Main Line/ Utica Avenue (informal / unsigned)
- Eastern Parkway Service Road/ Rochester Avenue
- Eastern Parkway Service Road/ Buffalo Avenue



Utica Av

Rochester Av

Buffalo Av

→ = Current Informal B14 Bus Route

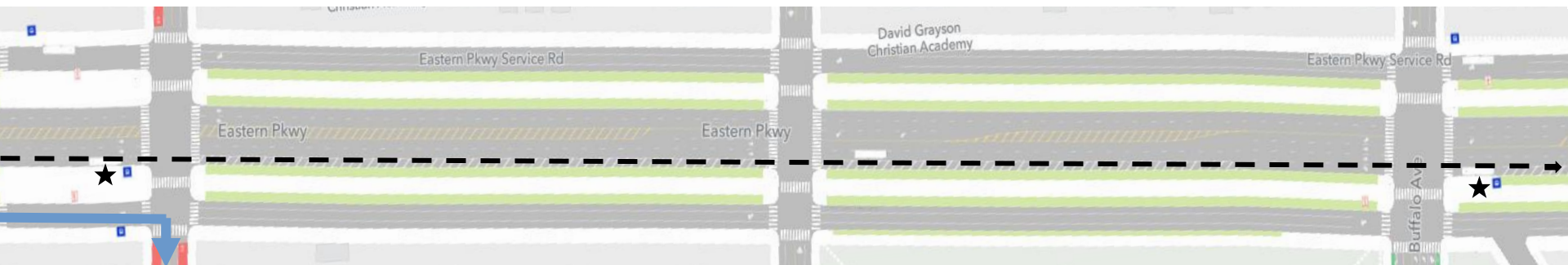
→ = Current B17 Bus Route

Project Proposal

Proposed Eastbound Bus Routing

B14 Bus Stops

- Eastern Parkway Main Line/ Utica Avenue
- Eastern Parkway Main Line/ Buffalo Avenue



Utica Av

Rochester Av

Buffalo Av

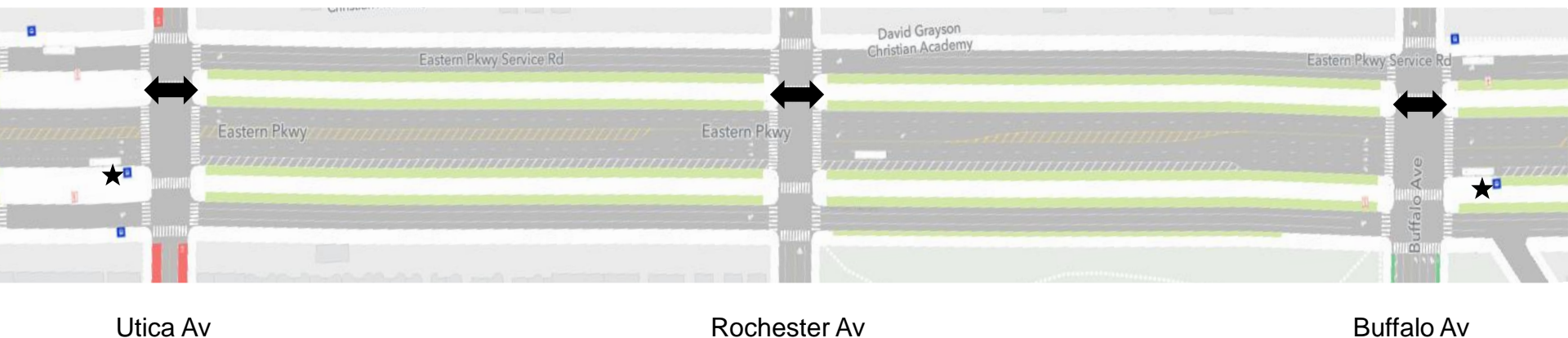
- ★ = Proposed ADA Bus Stops
- - -> = Proposed B14 Bus Route
- = B17 Bus Route

Schenectady Avenue to Ralph Avenue

- Relocate B14 bus stops to the southern pedestrian malls.
 - Replace current landscaping with hexagon pavers or smooth granite pavers, to make bus stops accessible.
- Retain existing eastbound right turn bays at Buffalo Avenue and Ralph Avenue.
- Proposed removal of the bus stop at Rochester Avenue.
- Install ADA ramps connecting northern pedestrian malls.

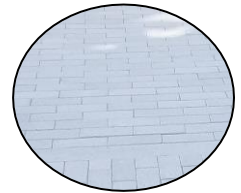
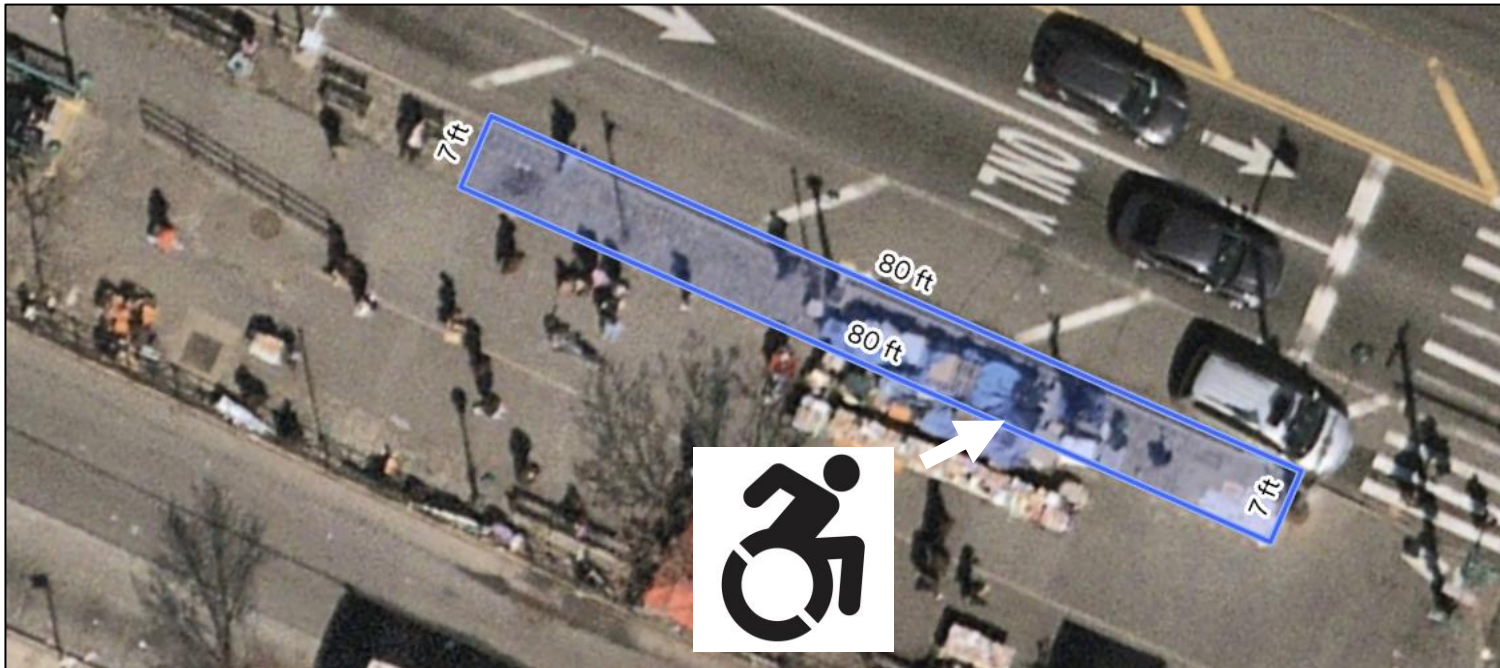
Proposed Conditions

★ = Proposed ADA Bus Stops
↔ = Proposed ADA Ramps



Proposed Materials at South Mall, West of Utica Avenue

- Replace rough granite blocks with hexagon pavers or smooth granite pavers.
 - Creates ADA accessible bus stop.
- Design would accommodate two buses at the bus stop at any time.
- No existing trees, above subway station.



Smooth
Granite Pavers



Hexagon
Asphalt Pavers

Proposed Materials at South Mall, East of Buffalo Avenue

- Coordinating with Parks Department to transplant a young tree to create a bus stop to serve passengers. Other existing trees nearby to remain in place.
- Replace grass with hexagon pavers or smooth granite pavers to create ADA accessible bus stop.



Existing Tree to be Transplanted



Smooth
Granite Pavers



Hexagon
Asphalt Pavers

Example of Pavers at Bus Stops



DeKalb Ave and S Portland Ave
(Fort Greene, Brooklyn)
Smooth Hexagon Pavers



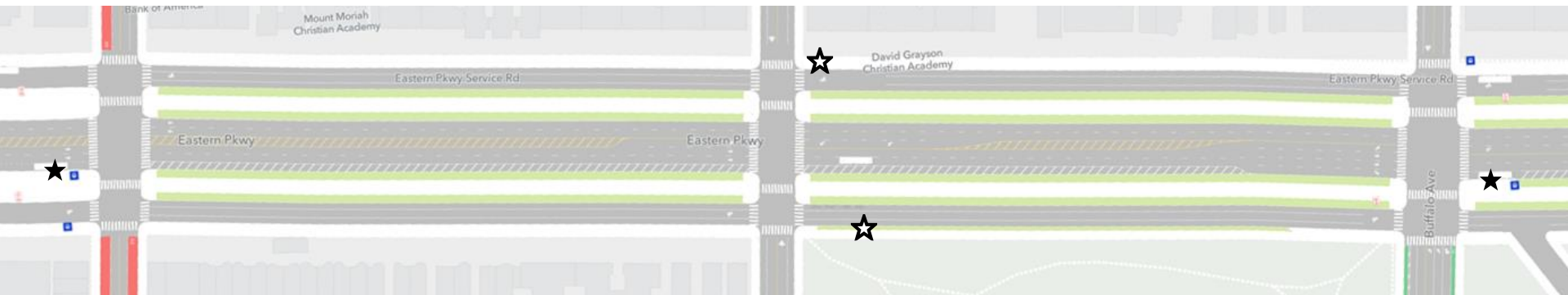
5th Ave and 87th St
(Central Park, Manhattan)
Smooth Granite Pavers and Hexagon Pavers

Rochester Avenue Bus Stop

- Proposed to remove the B14 bus stops at Rochester Avenue for bus stop balancing, which would increase bus speeds and travel time.
- Project allows for reuse of curb space at three service road locations.
- DOT coordinated with MTA's Brooklyn Bus Network Redesign Team on proposed removal.

Proposed Conditions

★ = Proposed ADA Bus Stop
☆ = Proposed Bus Stop Removal



Utica Av

Rochester Av

Buffalo Av

Opportunities for Repurposing Bus Stops



Carshare



Bike Corrals



Metered Parking



Truck Loading Zones

Thank You!

Questions?



NYC DOT



NYC DOT



nyc_dot



NYC DOT