



EAST NEW YORK AVE, HOWARD AVE, & PITKIN AVE

School Safety Improvements

Shared with Community Board 16 | April 2019



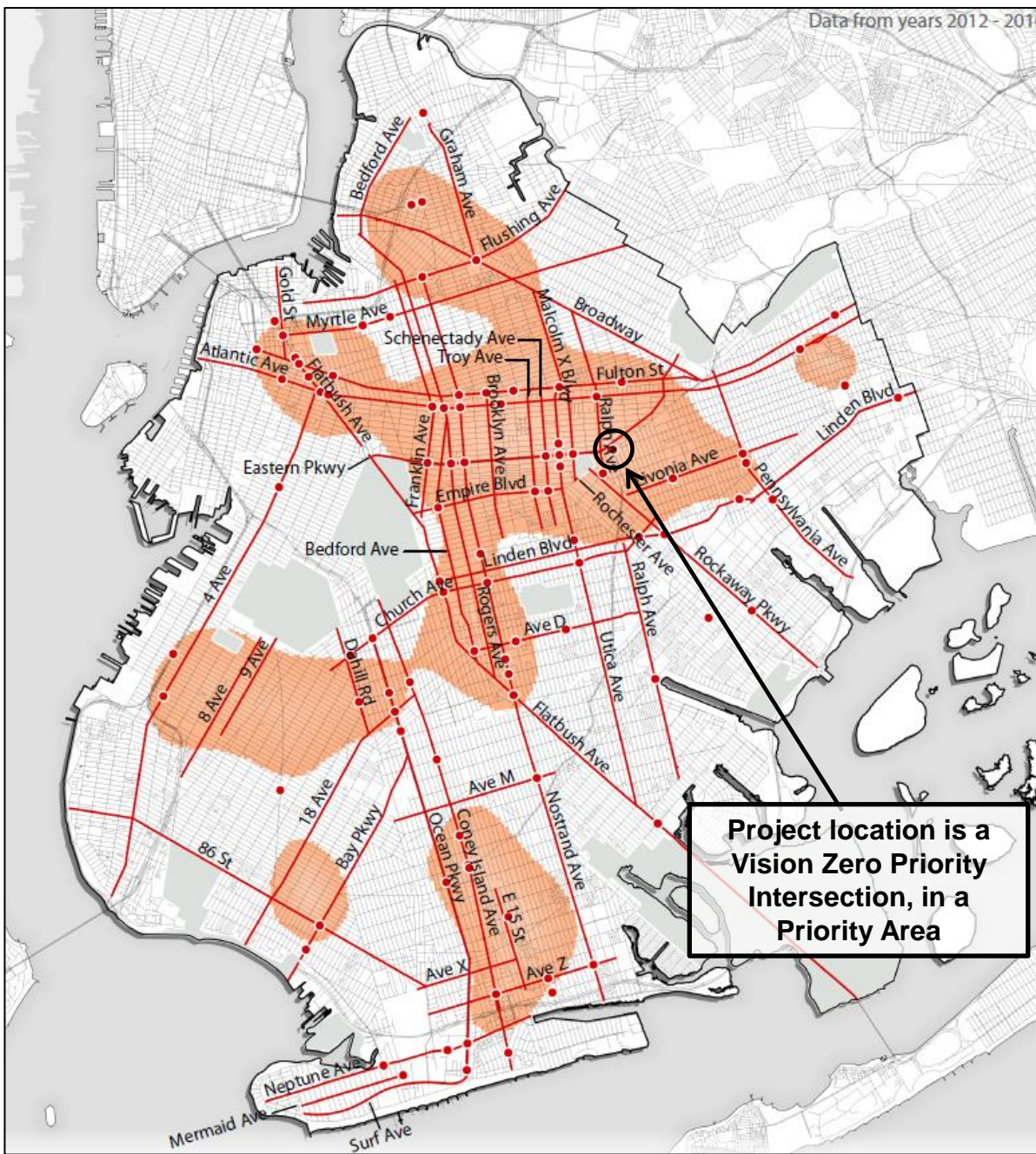
Background Vision Zero

Vision Zero

- Multi-agency effort to reduce traffic fatalities in NYC
- Borough Action Plans released in 2019
- Priority Intersections, Corridors, and Areas identified for each borough

E New York Ave, Howard Ave, and Pitkin Ave

- Vision Zero Priority Intersection, in a Priority Area

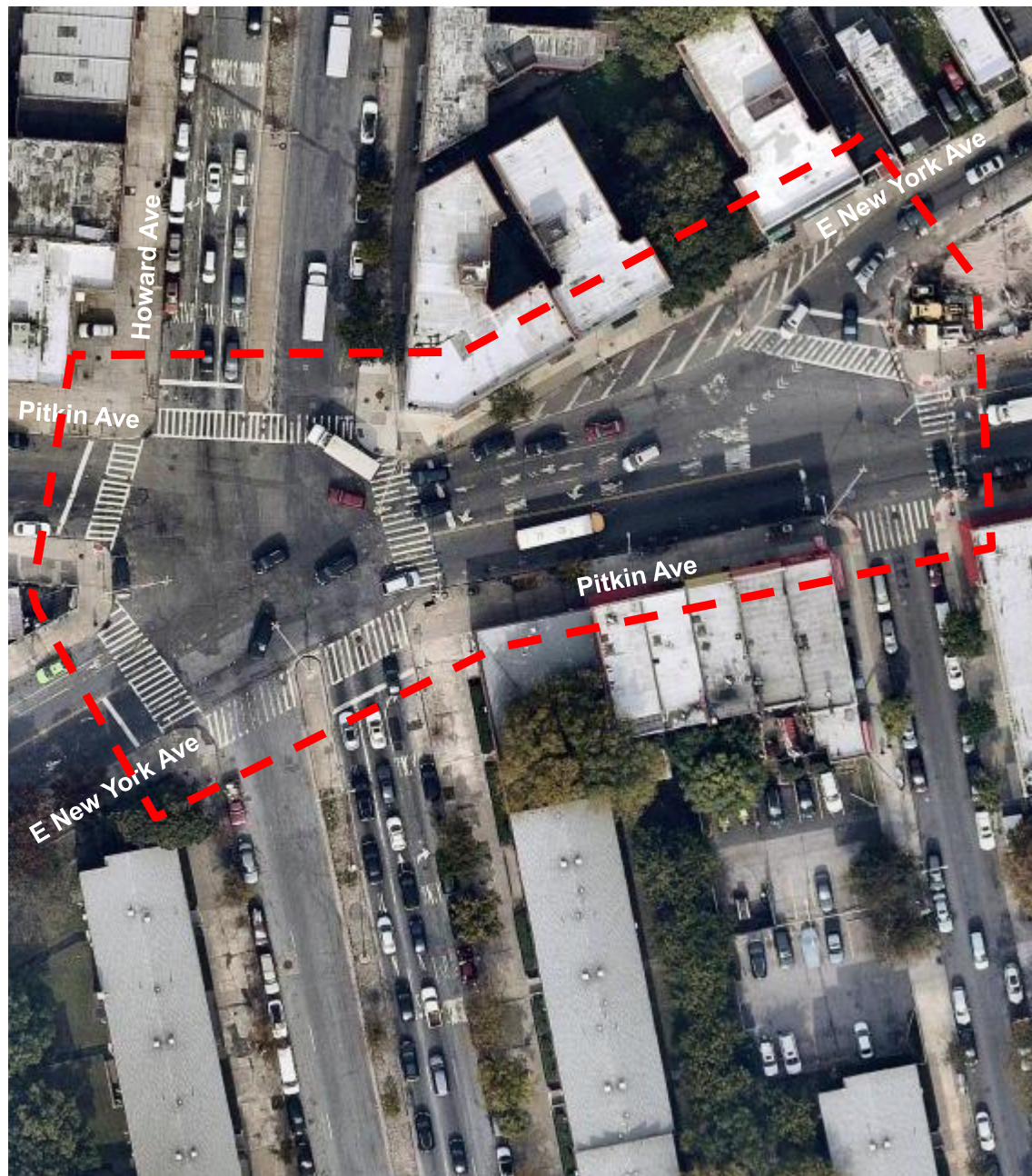


Background

Project Location

East New York Ave, Howard Ave, & Pitkin Ave

- Project area used by students accessing Brownsville Ascend Charter School
- Residential and commercial area
- Includes stop for the B12 and B14 buses
- Local truck route along East New York Ave
- Slated for permanent improvements as part of upcoming DEP capital project
- Located within a Senior Safety Area



Background

Safety Data 2013-2017

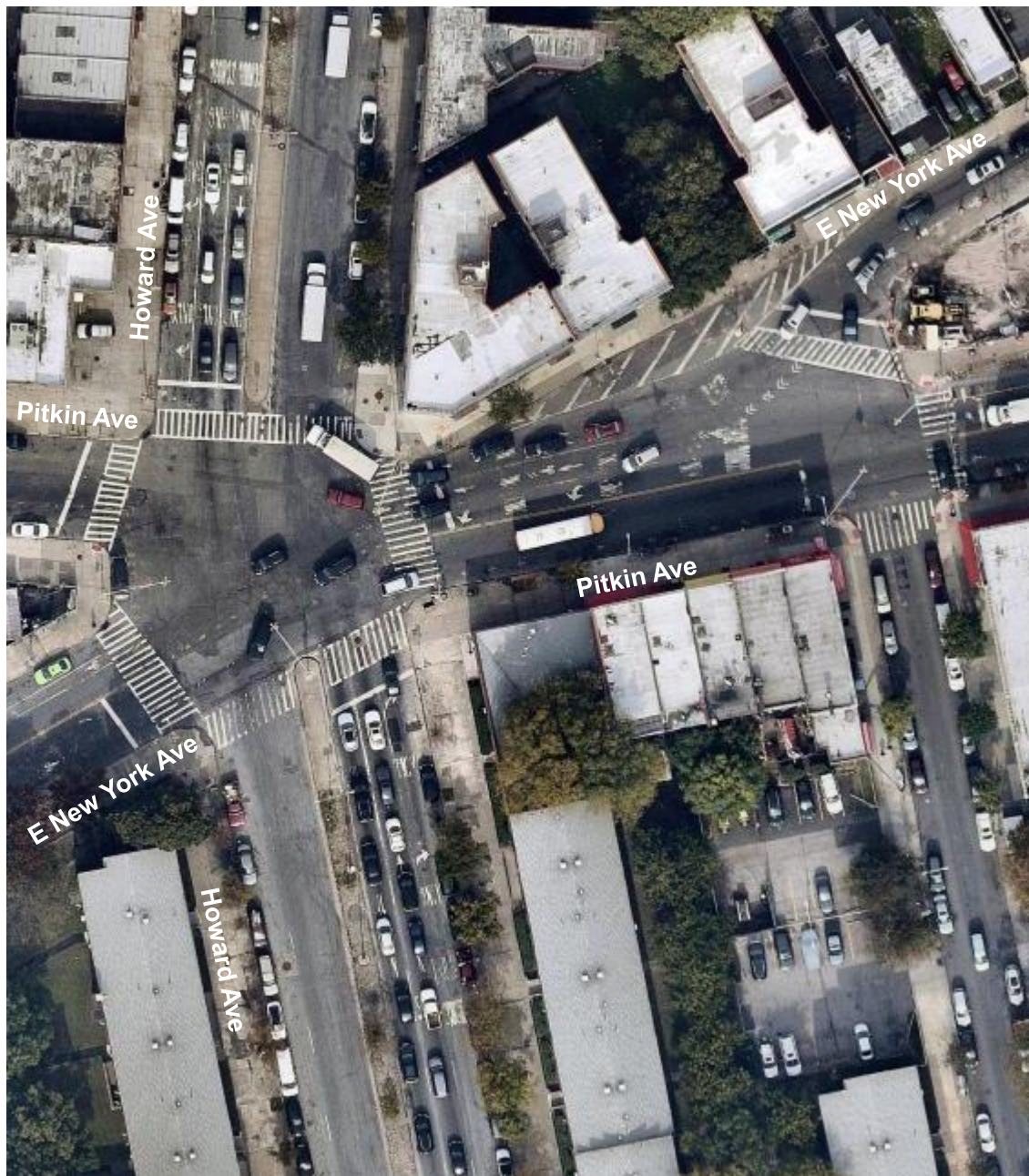
- 51 total injuries
- 5 severe injuries
- 40% of severe injuries are pedestrians
- 33% of pedestrians hit were crossing with the signal at the crosswalk

Howard Ave - Pitkin Ave to E New York Ave, BK
Injury Summary, 2013-2017 (5 Years)

	Total Injuries	Severe Injuries	Fatalities	KSI
Pedestrian	14	2	0	2
Bicyclist	1	1	0	1
Motor Vehicle Occupant	36	2	0	2
Total	51	5	0	5

Fatalities, 01/01/2013-4/8/2019 : None

Source: Fatalities: NYCDOT
Injuries: NYSDOT
KSI: Persons Killed or Severely Injured



Howard Ave, East New York Ave, and Pitkin Ave

Existing: Long Crossing Distances with No Pedestrian Refuge



Lack of pedestrian refuge
for long crossing on
Howard Ave

Howard Ave at Pitkin Ave, looking east

Howard Ave, East New York Ave, and Pitkin Ave

Existing: Complex Vehicular Movements with Poor Visibility



Vehicles on EB Pitkin Ave have poor visibility turning onto WB East New York Ave

E New York Ave at Pitkin Ave, looking north

Howard Ave, East New York Ave, and Pitkin Ave

Existing: Long Unprotected Pedestrian Crossings

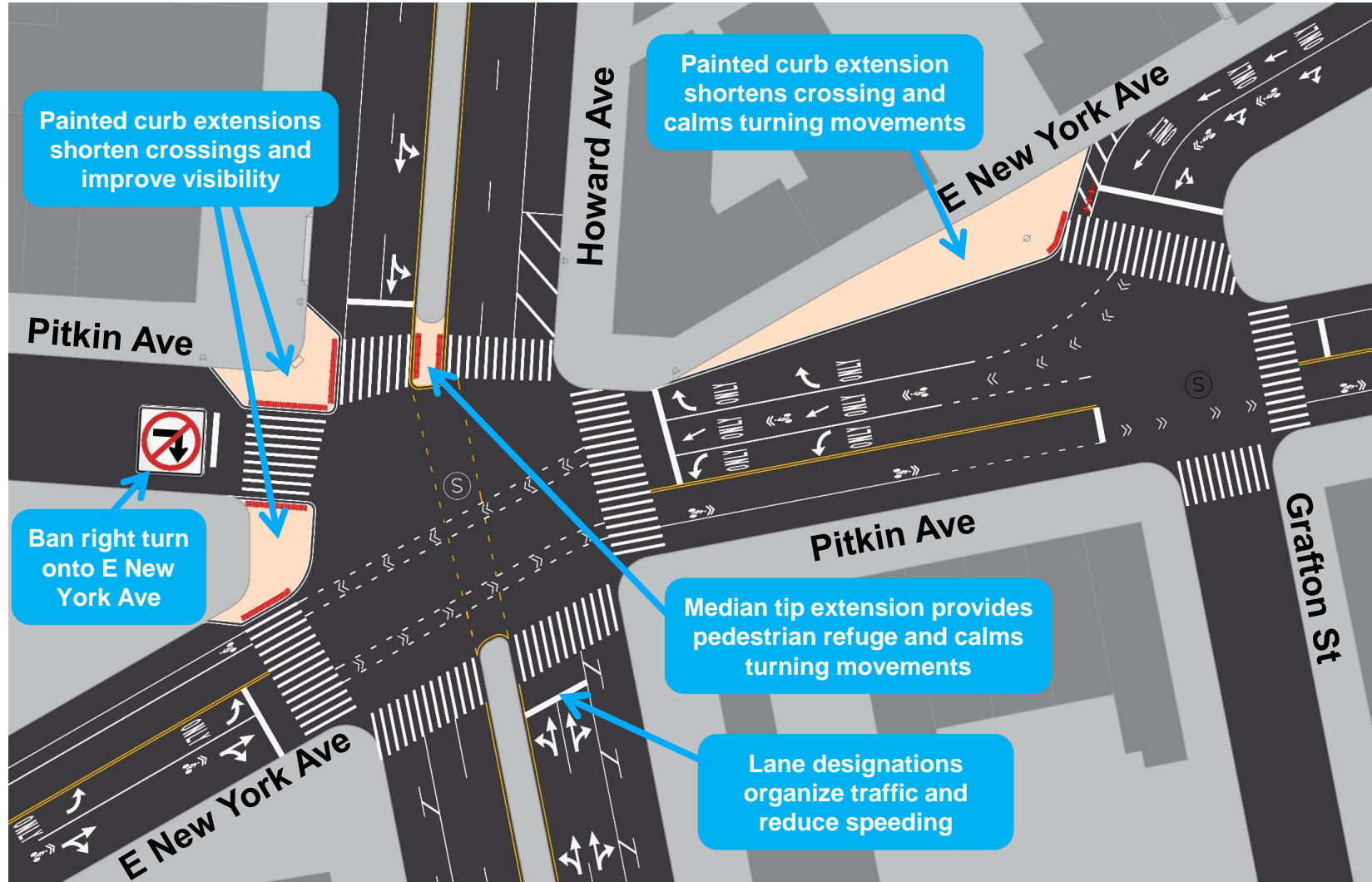


Long pedestrian crossing on east leg of East New York Ave

East New York Ave at Pitkin Ave, looking West

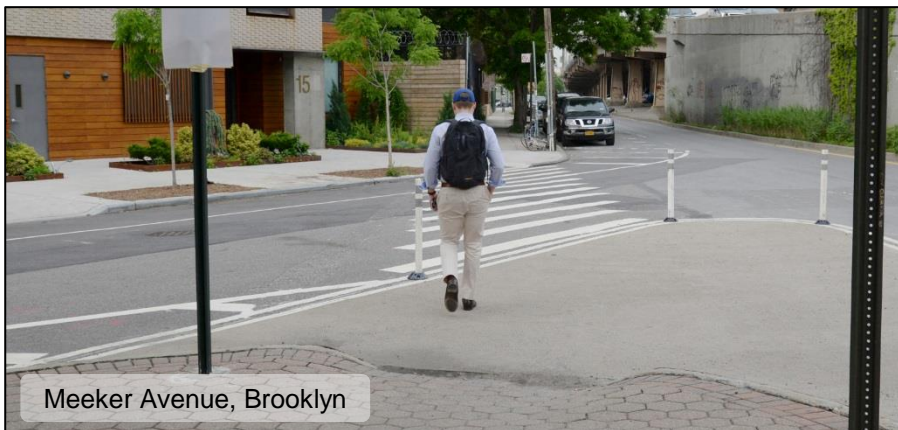
Proposal

Intersection Safety Improvements



Proposal

Painted Curb Extensions



Painted curb extensions normalize skewed intersections, improve vehicular alignment and shorten crosswalks making them safer for pedestrians

Proposal

Median Tip Extension



Median tip extensions create a safe refuge for pedestrians who are waiting for a walk signal and calm vehicle turning movements

THANK YOU!



NYC DOT



NYC DOT



nyc_dot



NYC DOT