



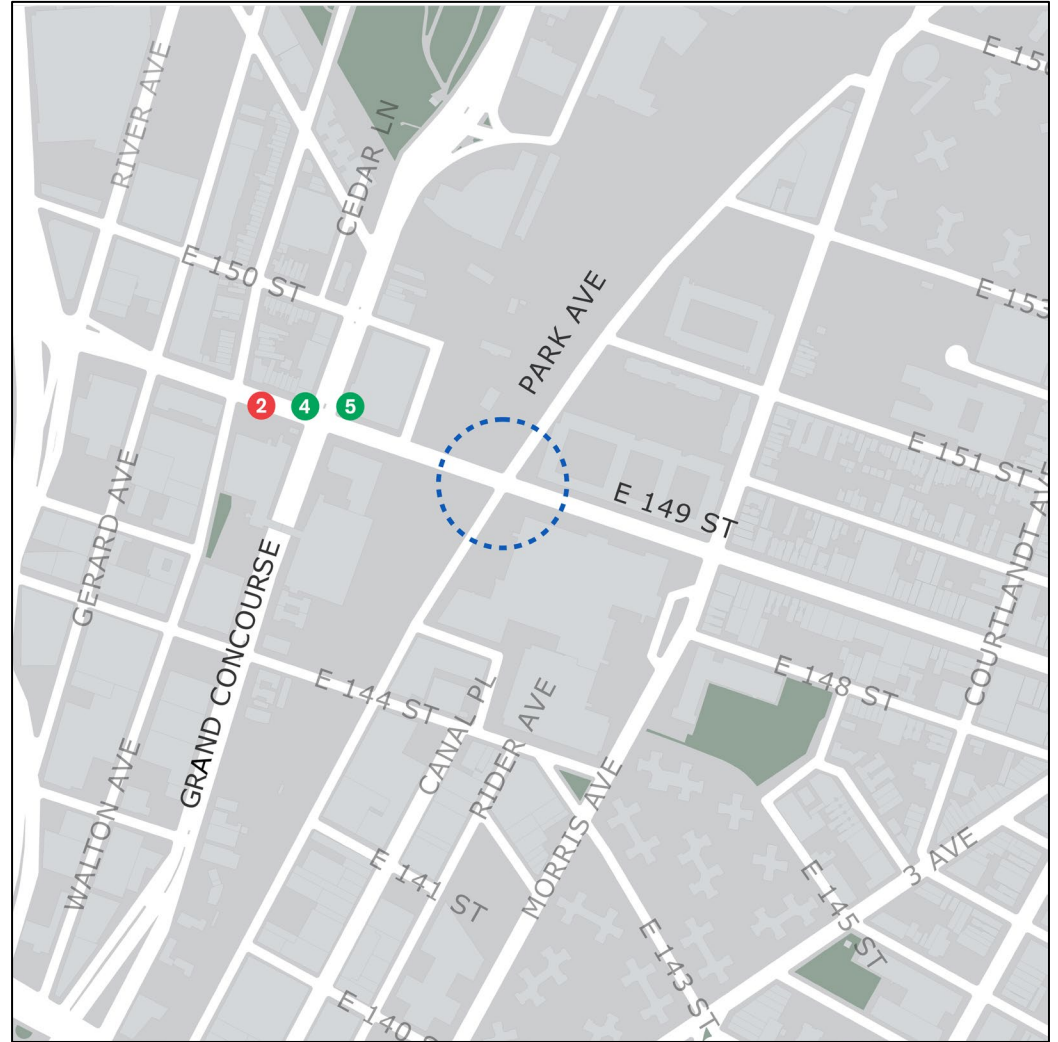
# E 149<sup>th</sup> St and Park Ave

Bronx Community Boards 1 & 4

Spring 2024

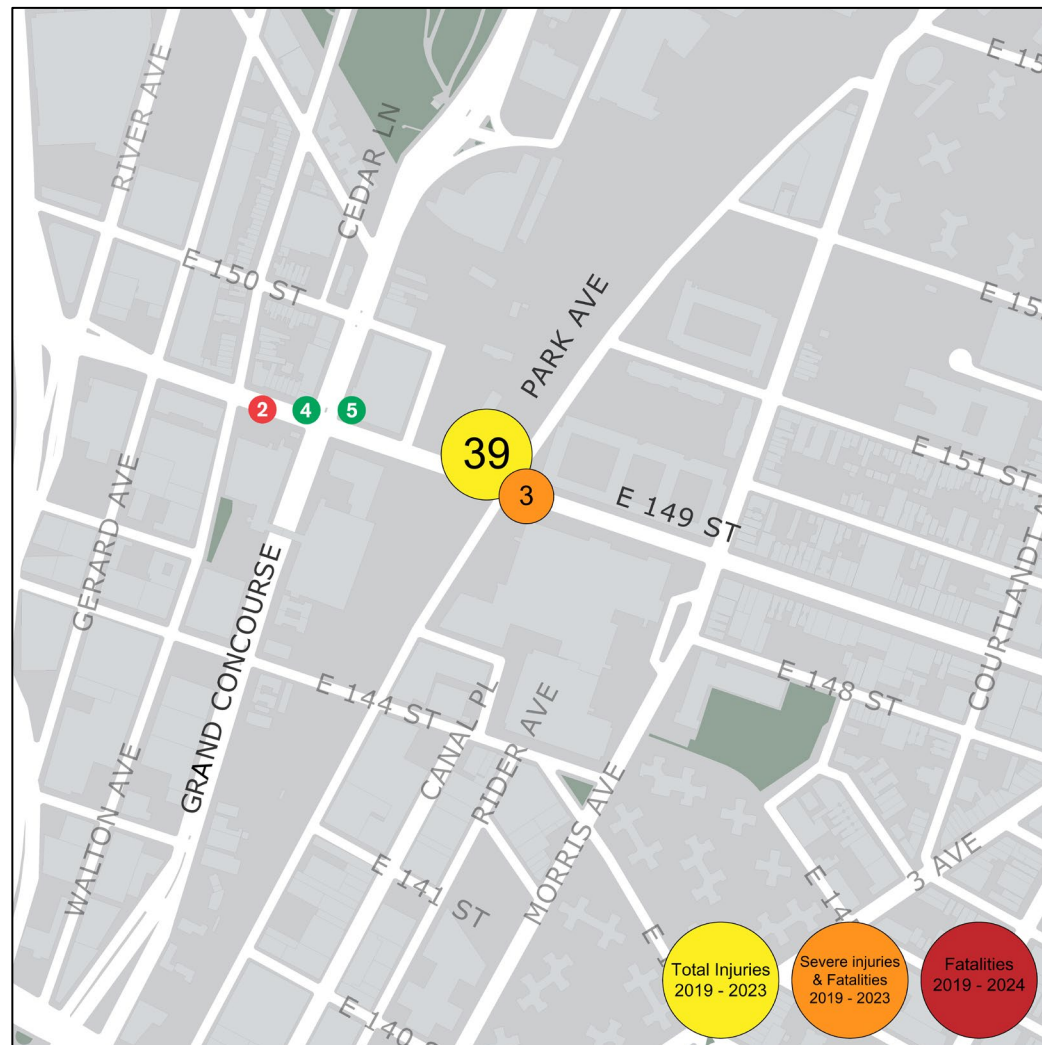
# Project Background

- Commercial and residential land use
- Nearby subway stop at 149<sup>th</sup> St – Grand Concourse
  - Access to 2, 4, and 5 trains
- Bus Only lane along 149<sup>th</sup> St
- Local truck route along E 149<sup>th</sup> St
- Adjacent to Lincoln Hospital on SE corner
- Citibike station at NW corner



# Safety Data

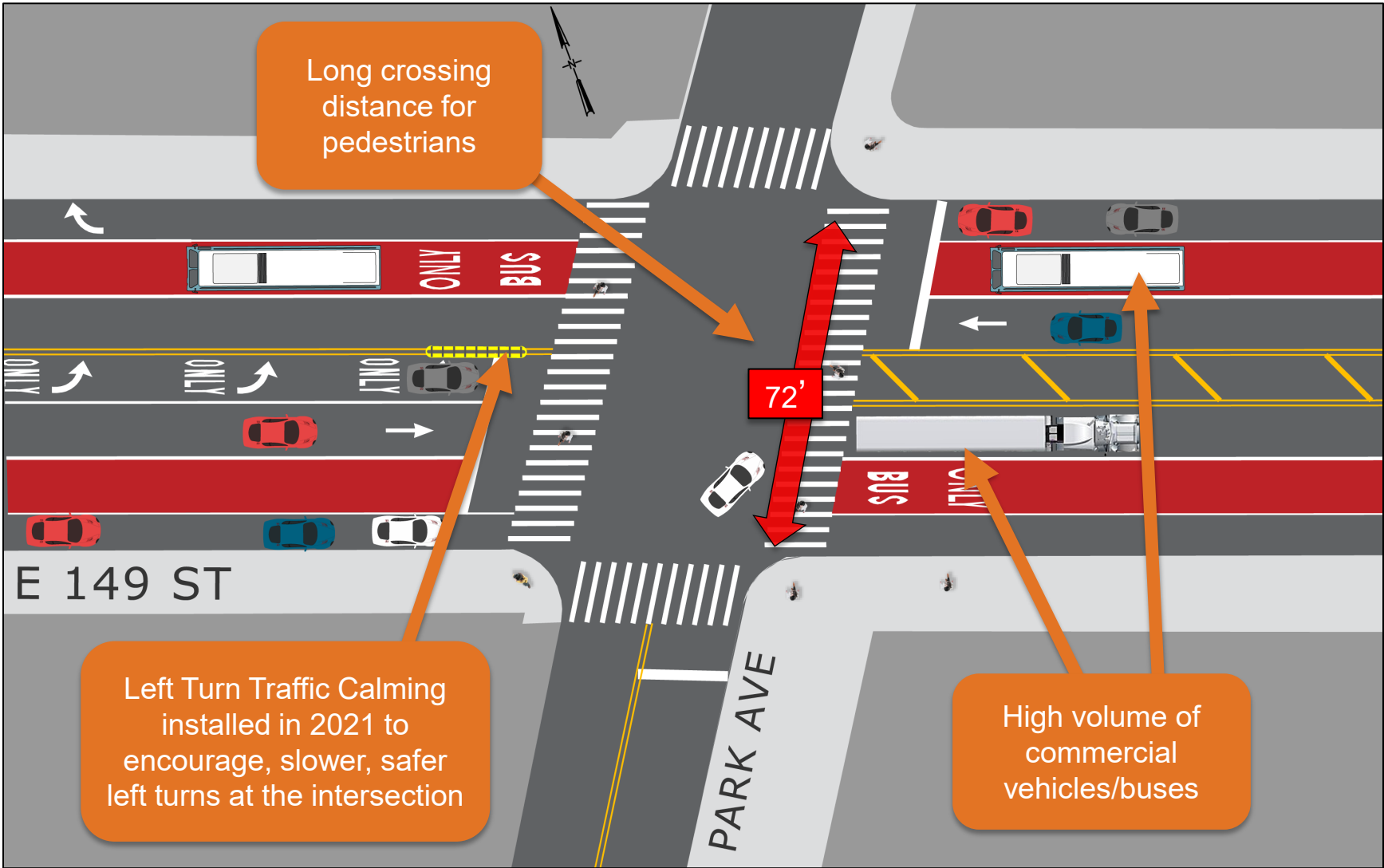
- Vision Zero Priority Corridor/Intersection/Area
- 39 injuries, including 3 severe injuries, from 2019 – 2023
  - 6 additional severe injuries and 1 fatality occurred at intersection in 2018



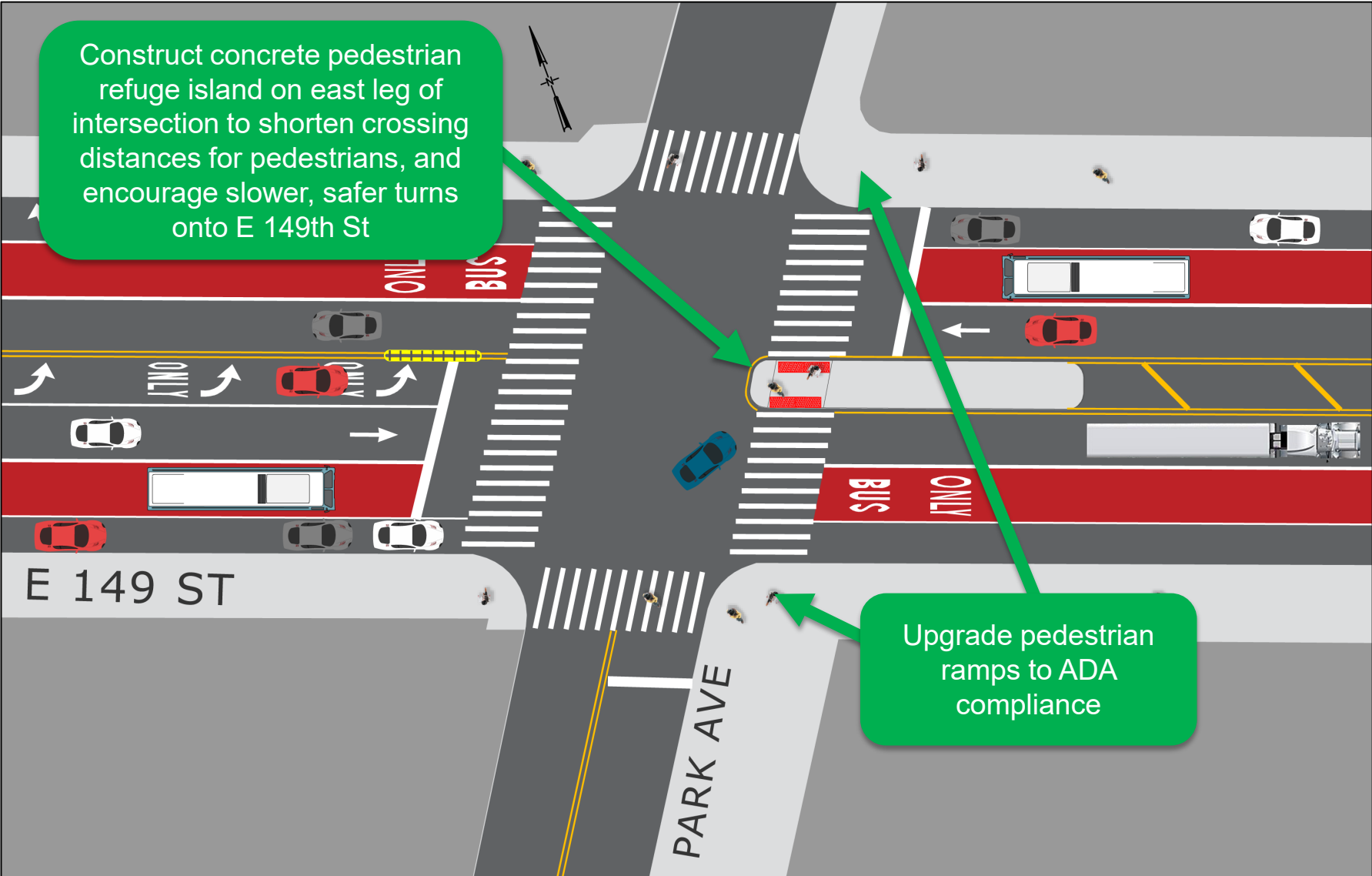
**Injury Summary, 2019-2023 (5 Years)**

Mode	Total Injuries	Severe Injuries	Fatalities	KSI
Pedestrian	4	1	0	1
Bicyclist	4	0	0	0
Motor Vehicle Occupant	30	1	0	1
Other Motorized	1	1	0	1
<b>Total</b>	<b>39</b>	<b>3</b>	<b>0</b>	<b>3</b>

# Existing Conditions



# Proposed Conditions



# Project Benefits

---

- Provides safe pedestrian refuge space for pedestrians crossing E 149<sup>th</sup> St
- Reduces crossing distance across E 149<sup>th</sup> St
- Encourages slower, safer turns onto E 149<sup>th</sup> St
- Upgrades existing pedestrian ramps to ADA compliance



Similar design: Third Ave and E 170 St, BX

# Thank You!



NYCDOT



nyc\_dot



nyc\_dot



NYCDOT