



Dumont Ave, Fountain Ave to Shepherd Ave

Brownsville and East New York School Safety Update

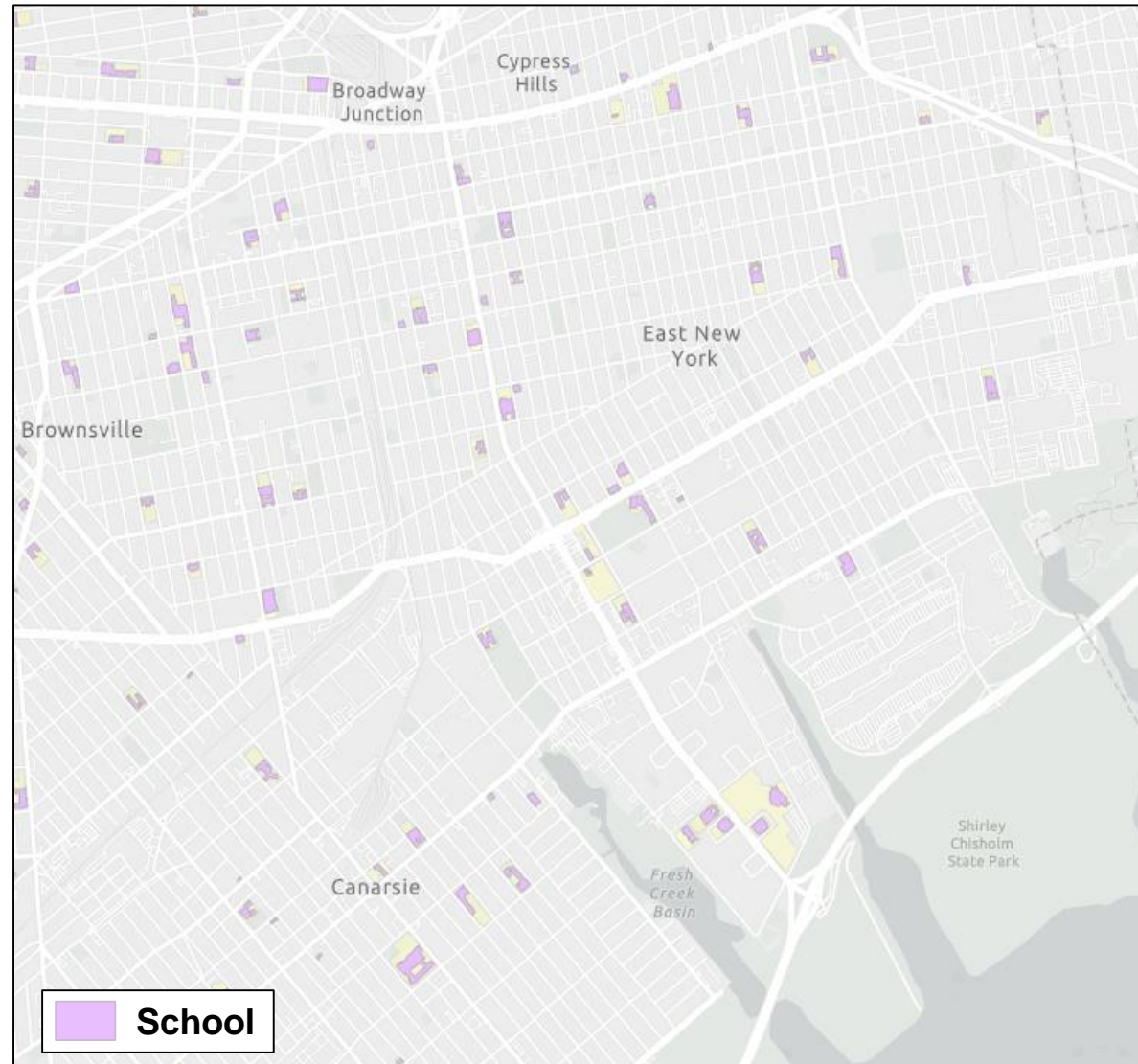
Presentation to the CB 5's Transportation Committee

March 21, 2022

Brownsville and East New York School Safety Initiative

Why Are We Here?

- Two child pedestrian fatalities in February 2020
- March 2020 community meeting on need for safety improvements
- Many schools in area
- High volumes of student pedestrians at arrival and dismissal hours



Brownsville and East New York School Safety Initiative

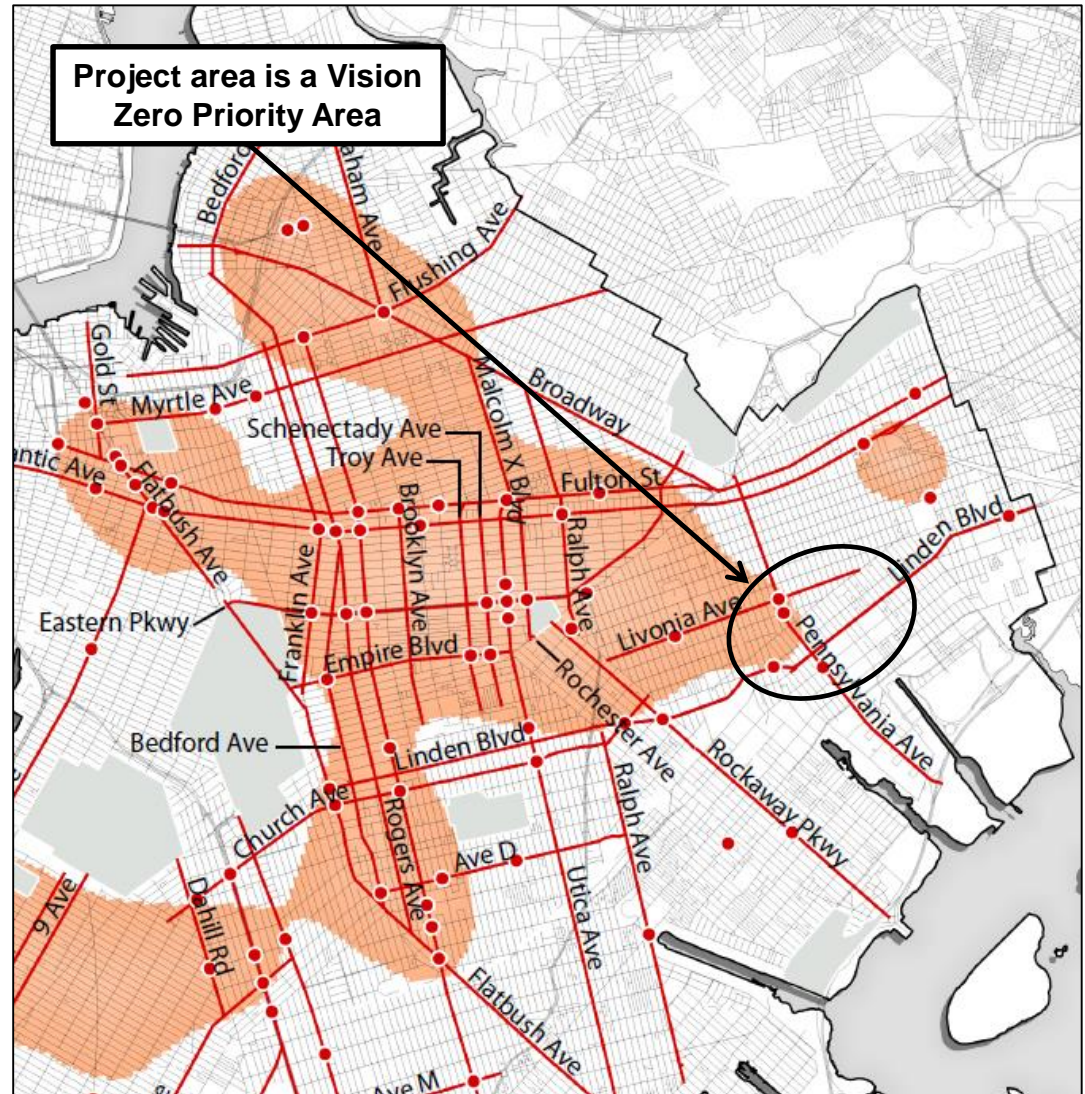
Vision Zero Priority

Vision Zero

- Multi-agency effort to reduce traffic fatalities in NYC
- Borough Action Plans released in 2019
- Priority Intersections, Corridors, and Areas identified for each borough

East New York and Brownsville

- Project area is within Priority Area and includes Priority Corridors and Intersections



Brownsville and East New York School Safety Initiative

School Safety Study Area

Community Board Boundary --

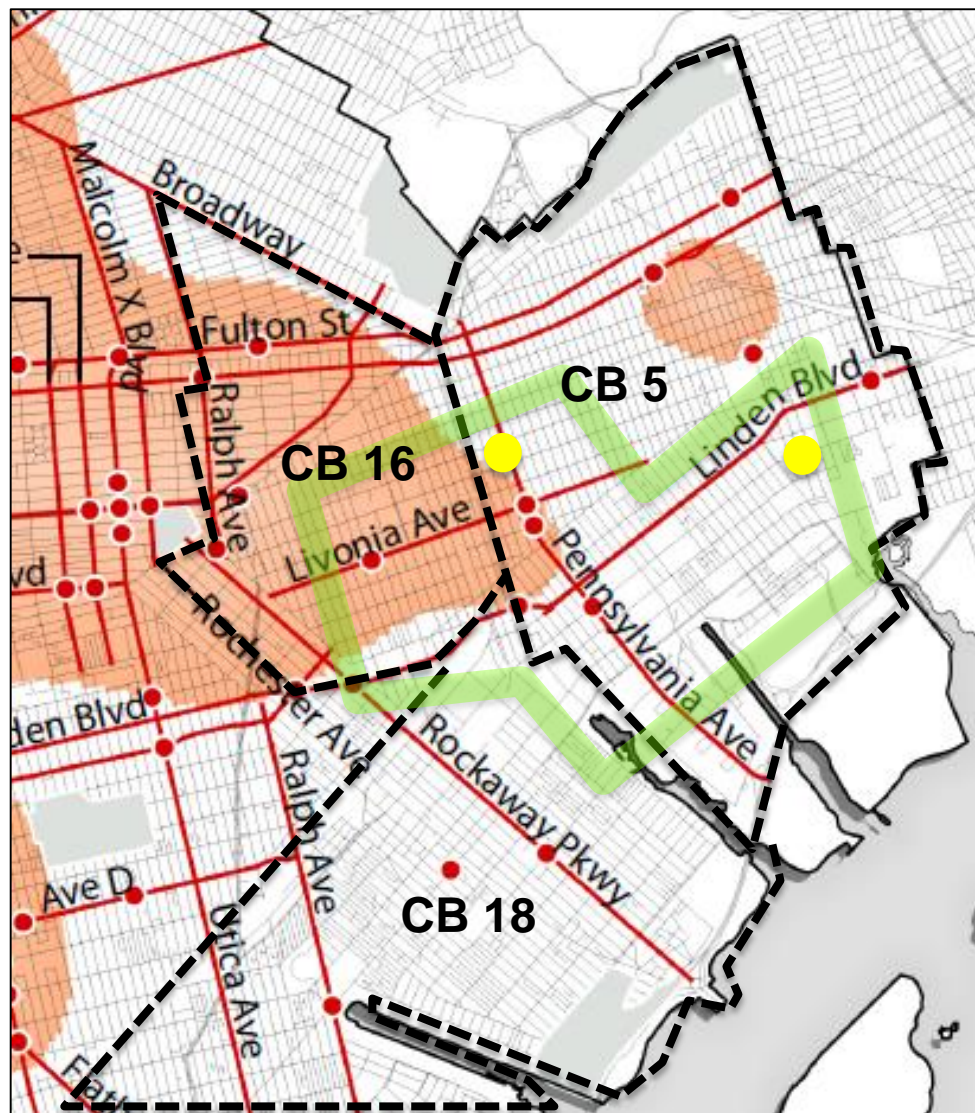
2020 Child Fatality ●

Vision Zero Area ■

Vision Zero Corridor —

Vision Zero Intersection ●

Proposed Study Area ■



Outreach

1

Brownsville and East New York School Safety Initiative

2021-2022 School and NYCHA Outreach by DOT

- NYC DOT met with schools and NYCHA resident associations to discuss safety concerns and potential improvements
- Met with CB 5 in May of 2021

NYCHA Resident Associations

- Brownsville Houses
- Glenmore Plaza
- Howard Houses
- Linden Houses
- Pink Houses
- Van Dyke I Houses

Schools

- Academy for Young Writers
- Achievement First Aspire Charter School
- Achievement First Linden Middle School
- Brooklyn Gardens Elementary School
- Collegiate Academy for Math and Personal Awareness Charter School
- Children First PK 4
- East New York Middle School of Excellence
- East New York Elementary School of Excellence
- FDNY Captain Vernon A. Richard High School for Fire and Life Safety
- Frederick Douglass Academy VII
- Frederick Douglass Academy VIII Middle School
- High School for Civil Rights
- I.S. 364 Gateway
- J.H.S. 218
- Leadership Prep Brownsville Charter School
- Mott Hall Bridges Academy
- P.S. 149 Danny Kaye
- P.S. 224
- P.S. 273
- P.S. 306
- P.S. 346
- P.S. 4
- P.S./I.S. 327
- Performing Arts and Technology High School
- Teachers Preparatory High School
- The East New York Arts and Civics High School
- The East New York Middle School of Excellence
- The Fresh Creek School
- The Gregory Jocko Jackson School of Sports, Art, and Technology
- The School for Classics High School
- Van Siclen Community Middle School
- World Academy for Total Community Health High School

Brownsville and East New York School Safety Initiative

What We Learned

- Top Issues:
 - Speeding vehicles
 - Poor visibility at crossings
 - Uncontrolled intersections



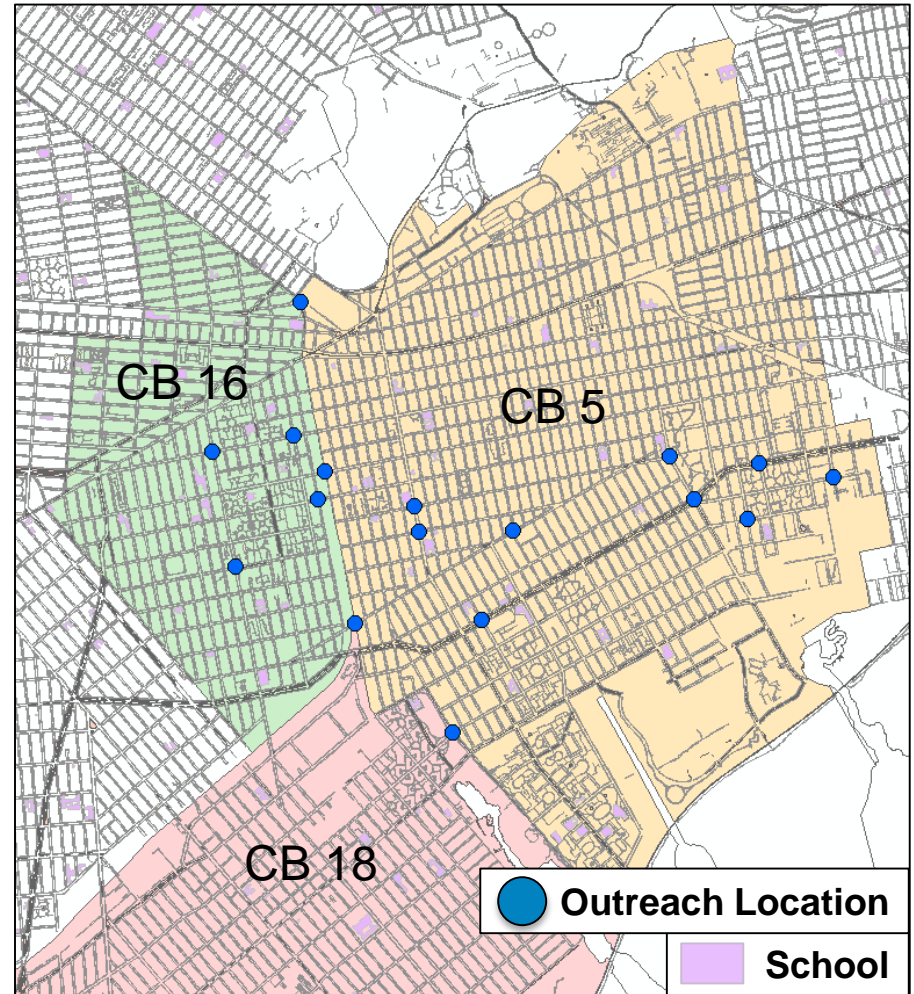
Brownsville and East New York School Safety Initiative

DOT Street Outreach Locations

- DOT conducted street level outreach at 14 sites in Summer 2021 to conduct surveys and collect site-specific comments
- Reached out to community boards and elected officials for locations



Outreach at Cherry Valley Supermarket, 926 Crescent St



Brownsville and East New York School Safety Initiative

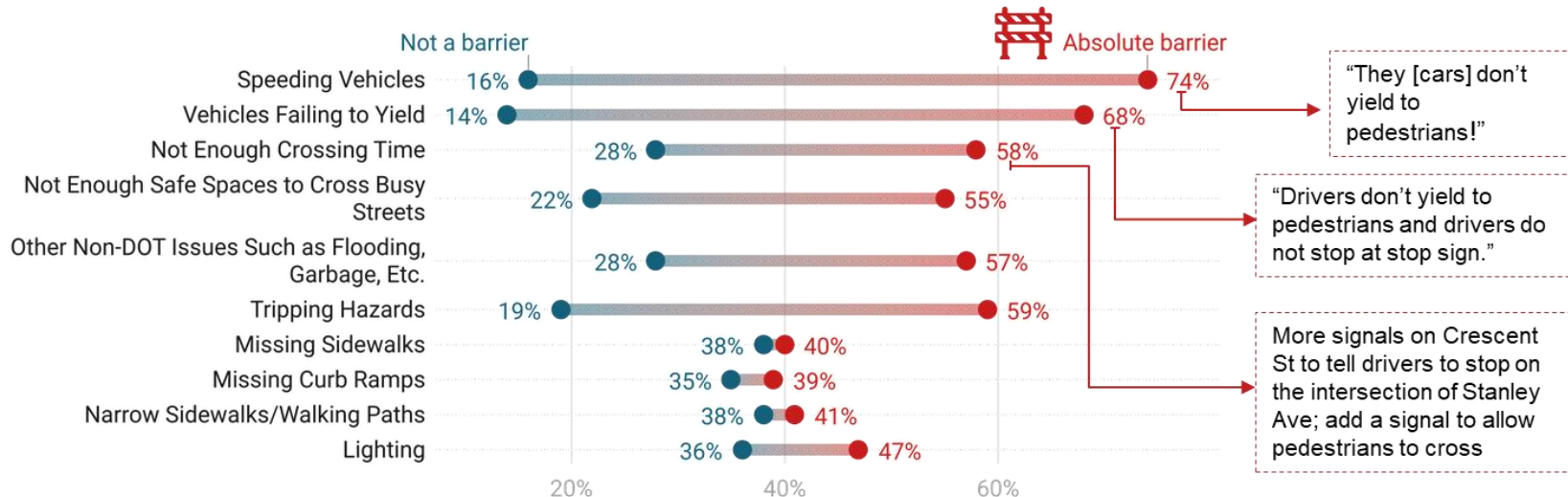
Feedback from Street Outreach

Traffic safety concerns affecting pedestrians who frequently walk in this neighborhood

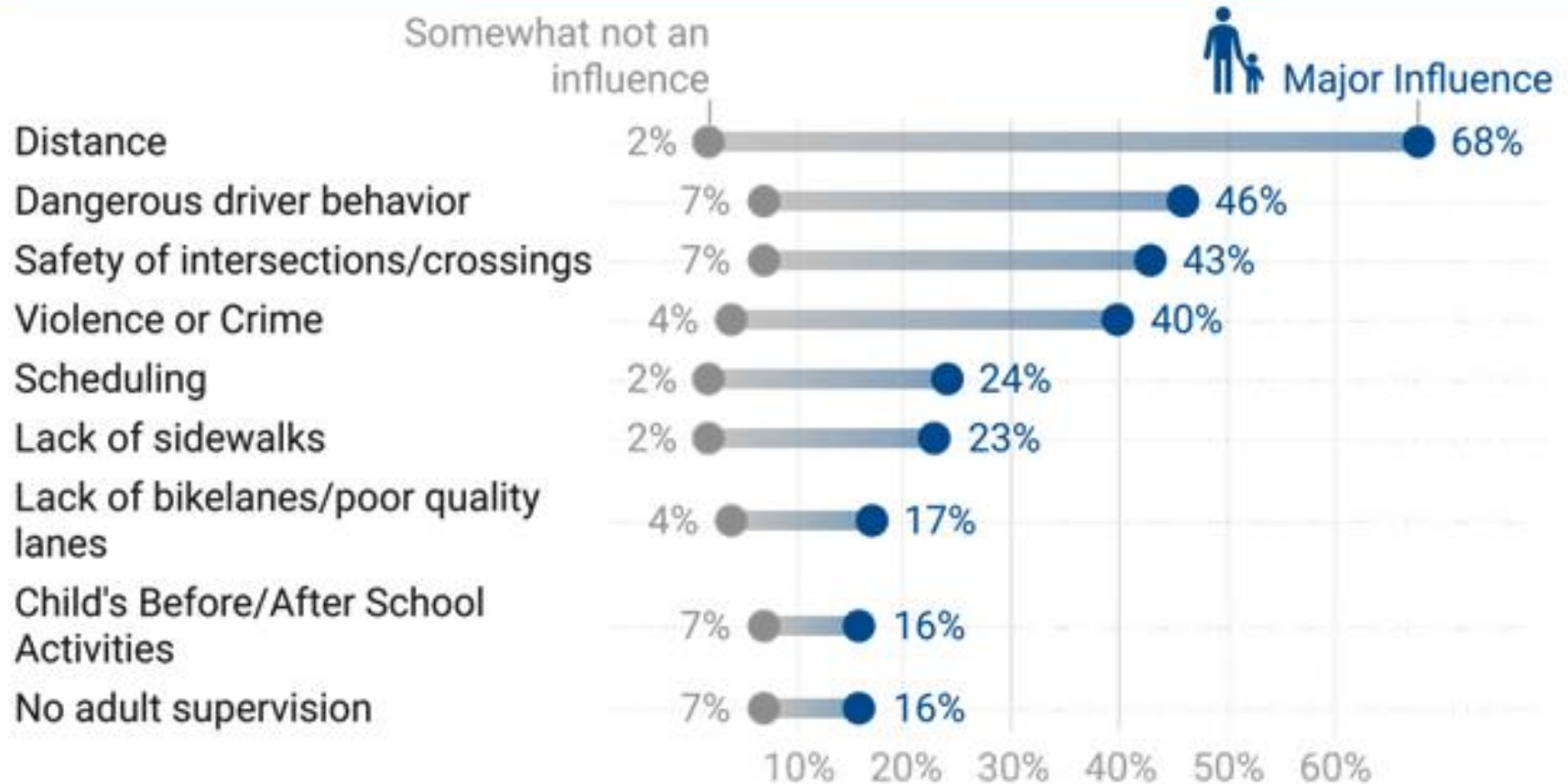
- » When asked to identify and assess safety issues that would negatively impact the overall experience for pedestrians, more than half of respondents say traffic conditions pose significant barriers to them when walking in the neighborhood (Figure 1), including:
 - Speeding vehicles (74%)
 - Vehicles failing to yield (68%)
 - Not enough crossing time for pedestrians (58%)
- » Other physical barriers/and or obstructions such as flooding, garbage, and other tripping hazards were also cited as significant safety concerns among respondents who frequently walk in the neighborhood.

***FIGURE 1. Ranking of pedestrian traffic safety issues, barriers or obstructions**

Rate each of the following conditions from 1 (not a barrier) to 5 (absolute barrier) that can make walking difficult or unpleasant you on your trips in this neighborhood (n=294)



Factors That Influenced Parents' Decision to Not Let Their Child Walk/Bike to School *



* Out of 184 respondents

Short Term Safety Improvements: Completed in 2021

2

Brownsville and East New York School Safety Initiative

Recent Safety Improvements

Over the past year DOT installed safety treatments to address concerns, such as:

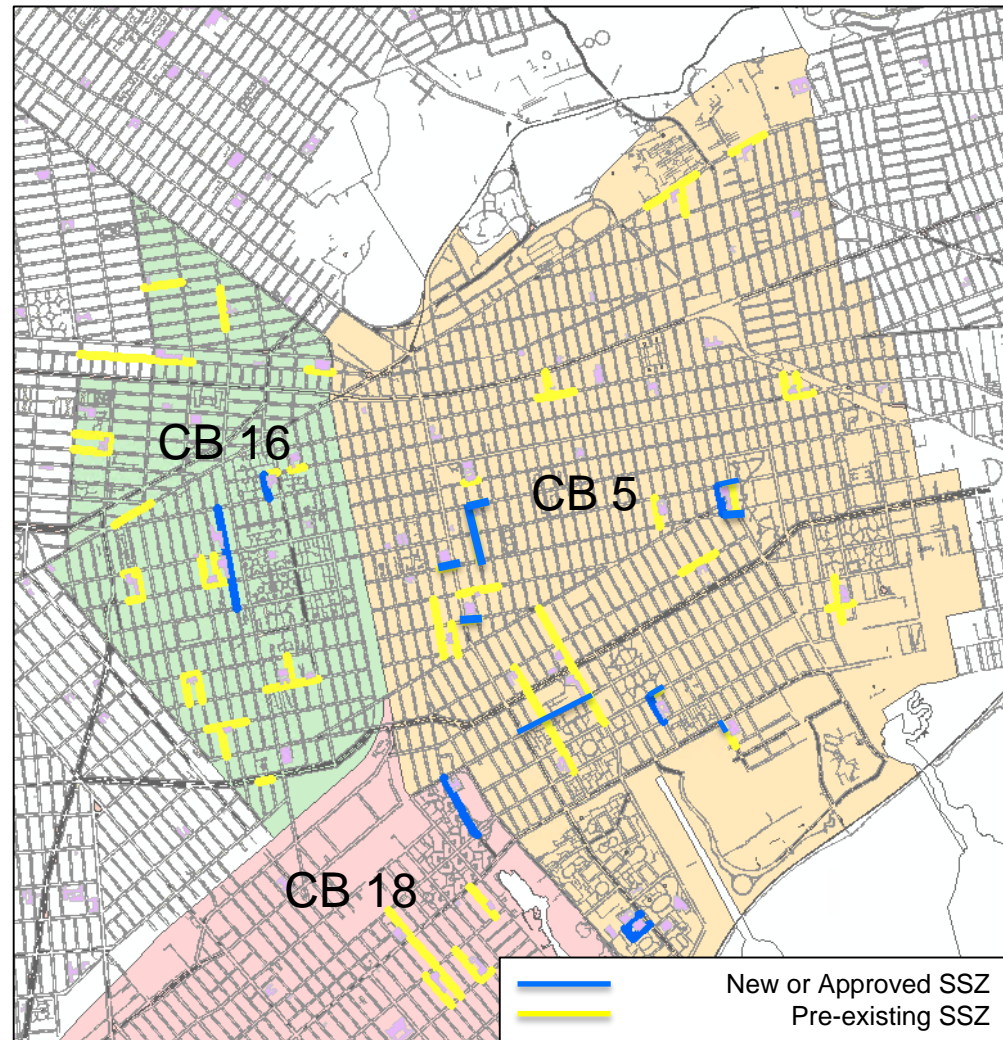
- School Slow Zones
- Speed humps
- Signage improvements
- Signal improvements
- Study intersections for stop signs and traffic signals, etc.



Brownsville and East New York School Safety Initiative

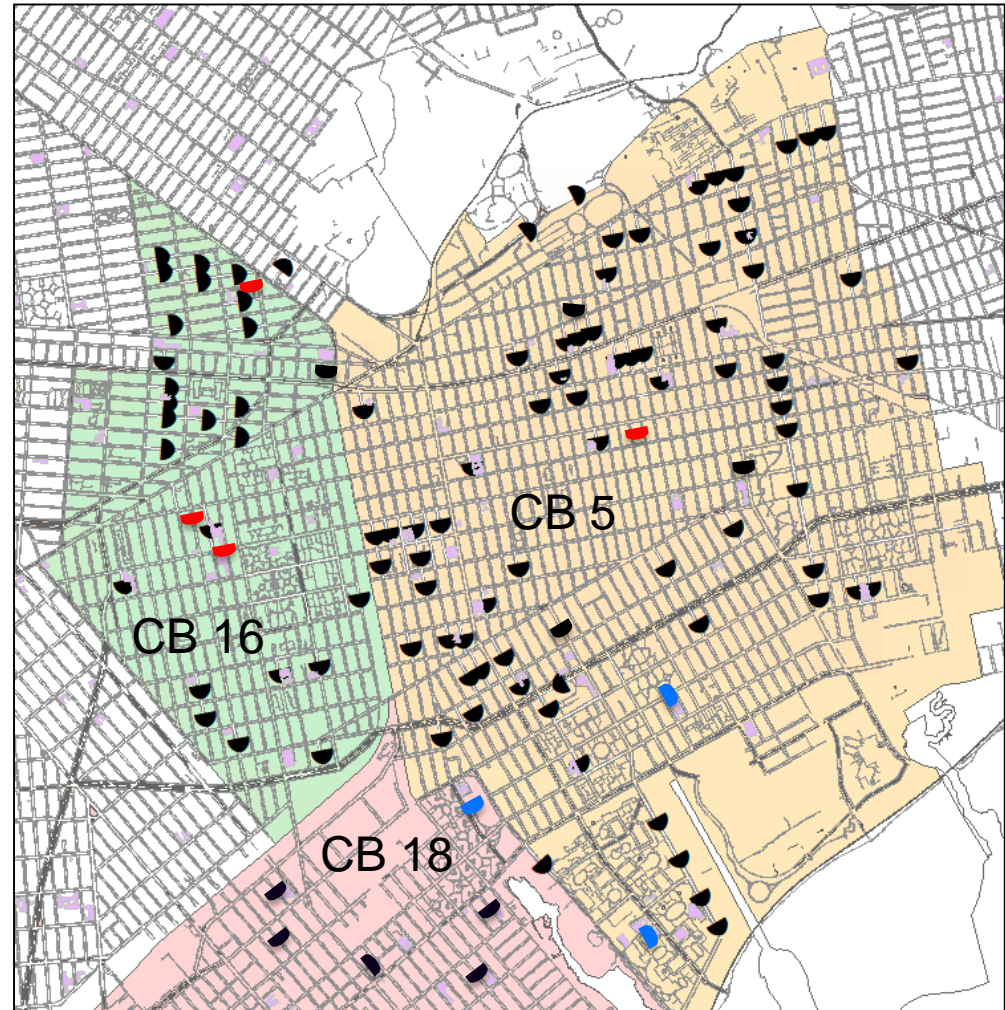
School Slow Zones

- School Slow Zones improve traffic safety in the vicinity of schools. The speed limit can be reduced to 20 MPH or 15 MPH (with a speed hump) during school days



Brownsville and East New York School Safety Initiative

Speed Humps

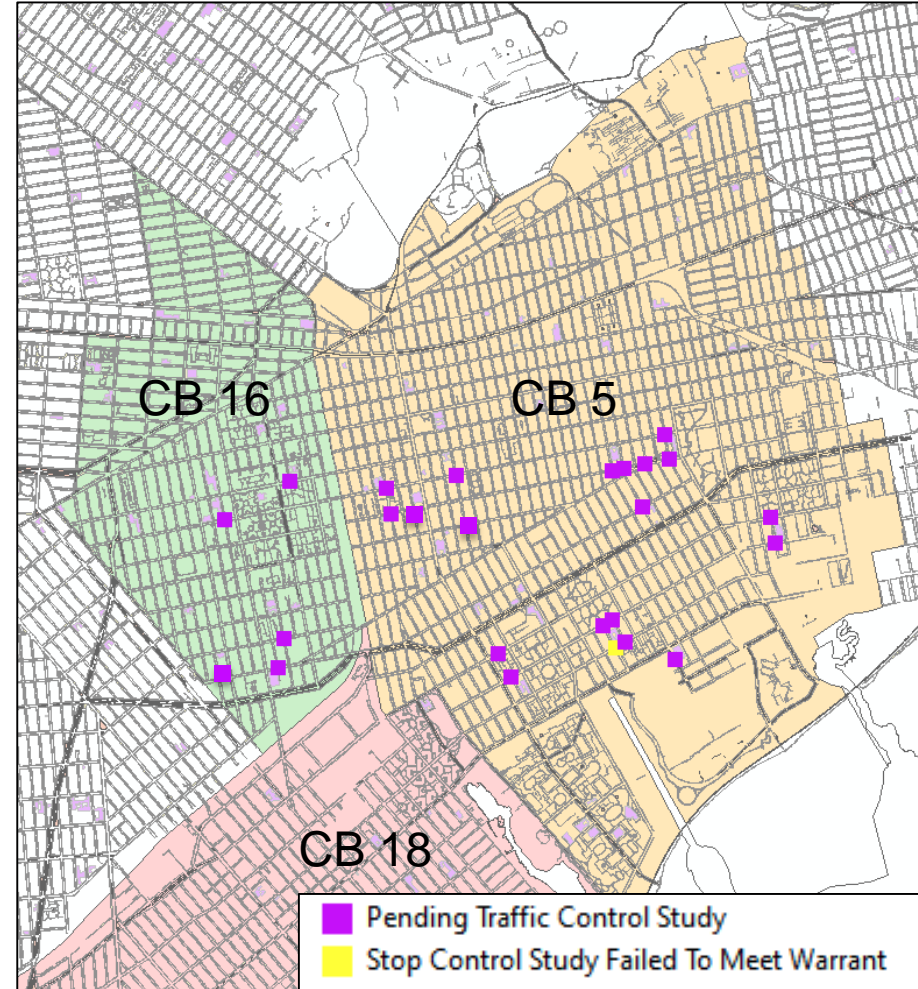


Pre-existing Speed Humps
Requested Speed Humps under Study
Investigated and Denied

Brownsville and East New York School Safety Initiative

Stop Signs & Traffic Signals

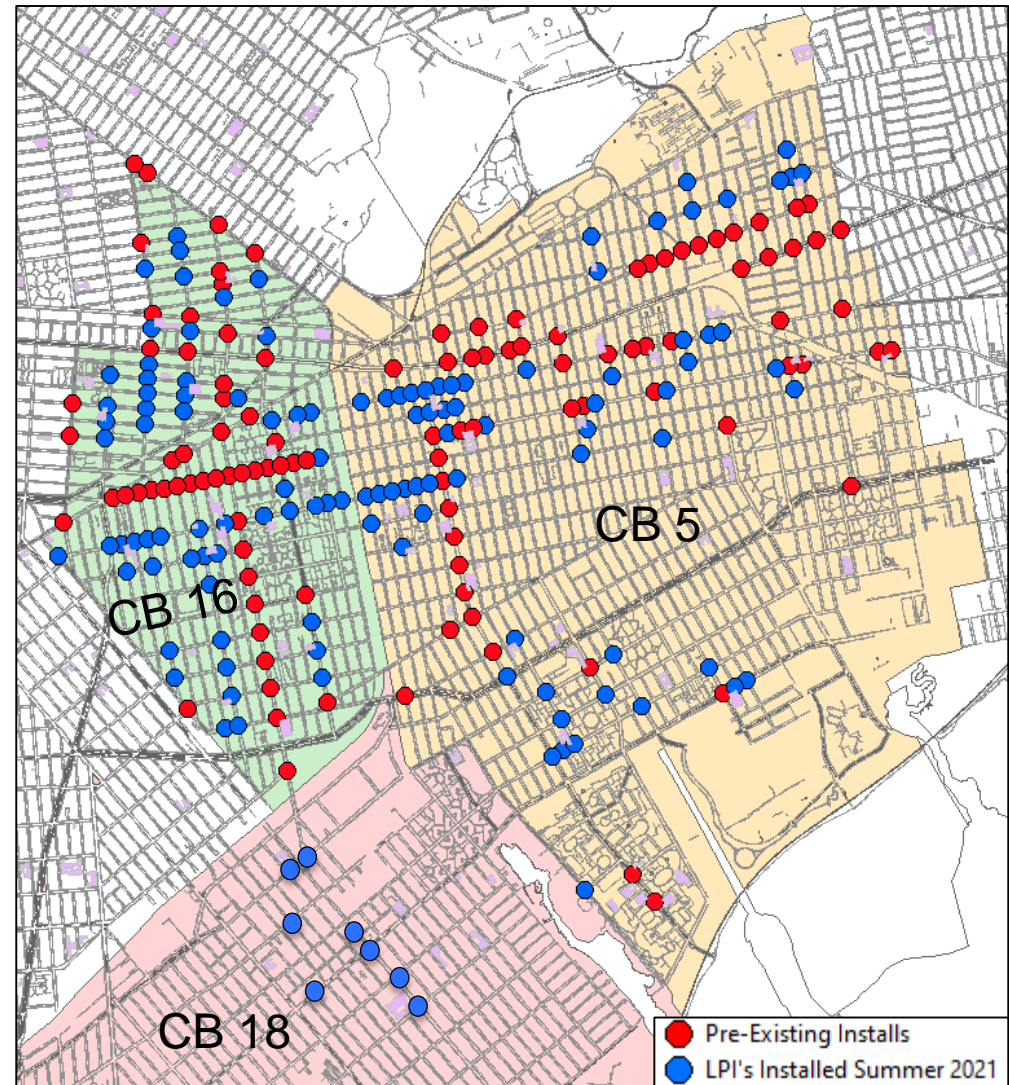
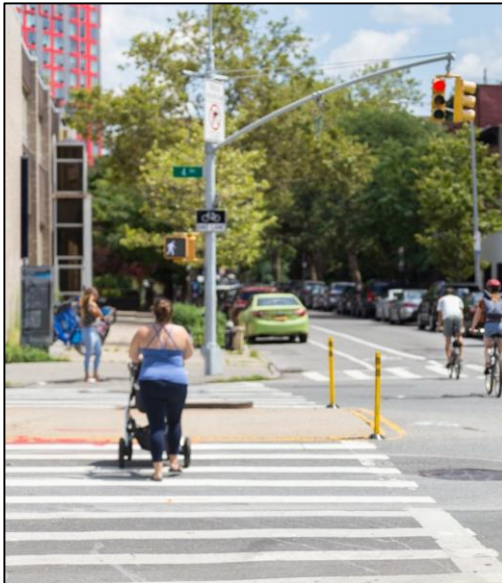
- Signal and all way stop sign studies are underway at numerous intersections



Brownsville and East New York School Safety Initiative

Leading Pedestrian Intervals

- Leading Pedestrian Intervals (LPI's) also known as “pedestrian head starts”, are installed at signalized intersections to give pedestrians the opportunity to cross the street 3-7 seconds before vehicles are given a green signal.
- NYC DOT installed over 60 LPI's in July and August of 2021



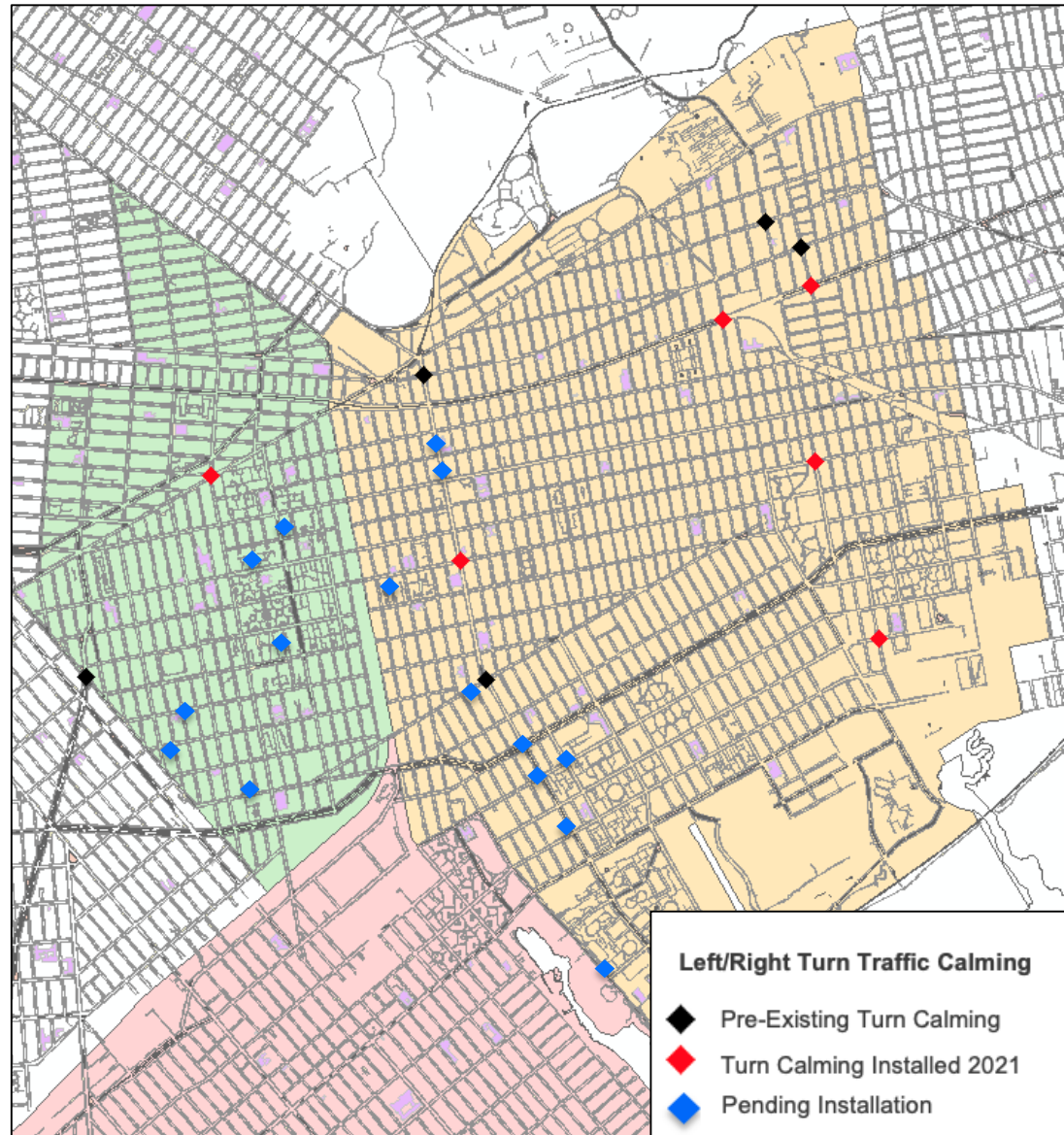
Brownsville and East New York School Safety Initiative

Turn Traffic Calming

- Turn traffic calming treatments encourage drivers to reduce speeds while making turns.
- Turn calming treatments installed or under study at multiple locations



Wortman Ave and Crescent St,
Brooklyn



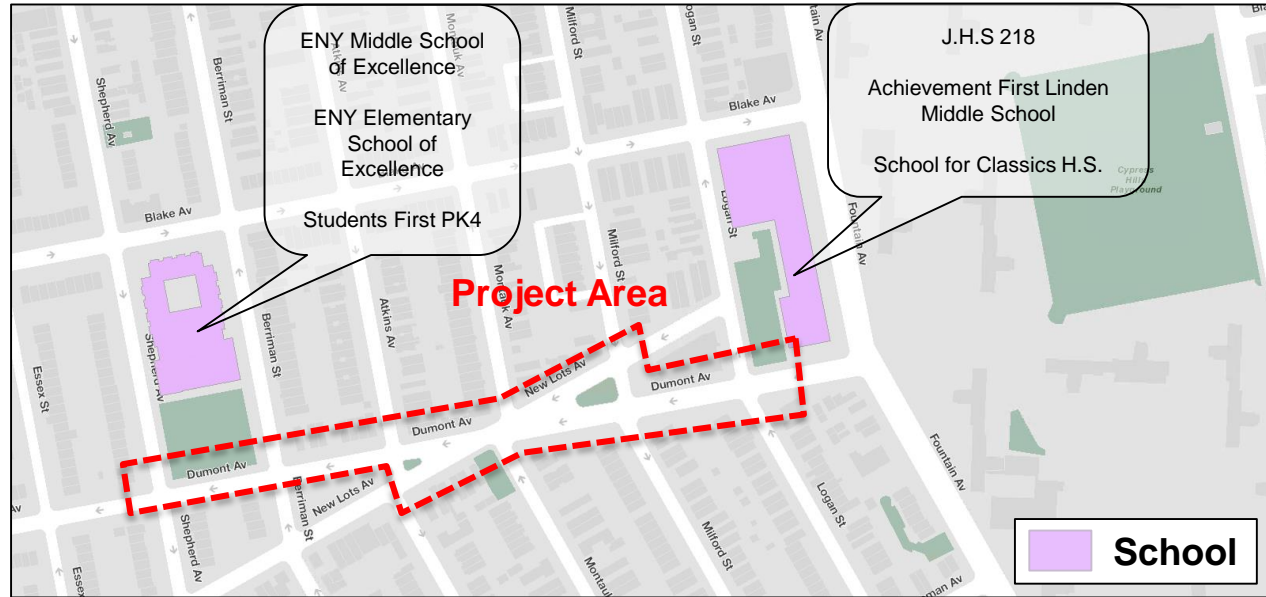
Proposed Dumont Ave,
Fountain Ave to Shepherd Ave

3

Dumont Ave, Fountain Ave to Shepherd Ave

Background

- Request for safety improvements from J.H.S. 218
- Complex intersections
- Difficult pedestrian crossings
- Project area used by students accessing nearby schools
- B15 bus on Dumont Ave and New Lots Ave



Dumont Ave, Fountain Ave to Shepherd Ave

Safety Data (2015- 2019)

- 59 injuries
- 3 severe injuries
- 20% of injuries are pedestrian

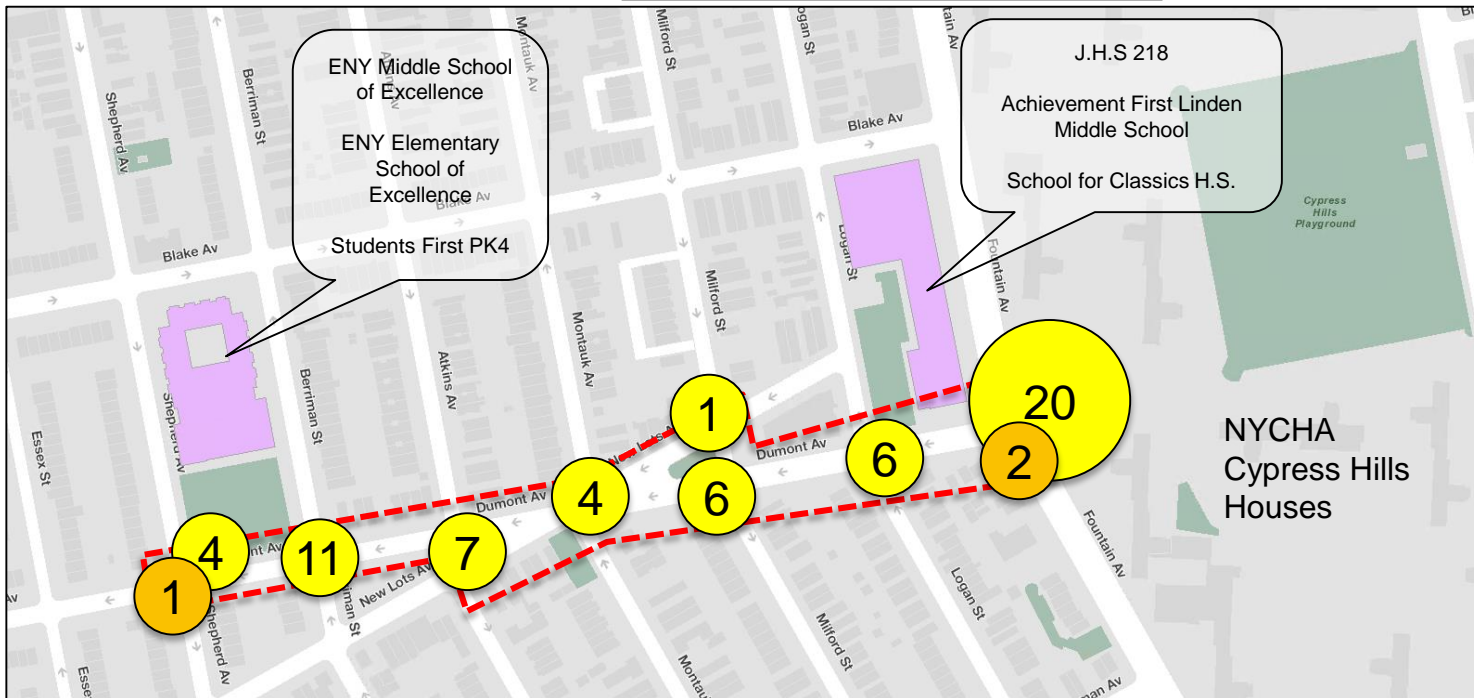
	Total Injuries	Severe Injuries	Fatalities
Pedestrian	12	2	0
Bicyclist	4	1	0
Motor Vehicle Occupant	43	0	0
	0	0	0
Total	59	3	0

Source: Fatalities: NYCDOT, Injuries: NYSDOT KSI: Persons Killed or Severely Injured

**Total
Injuries
2015-2019**



**Severe
Injuries &
Fatalities
2015-2019**



Map does not include total or severe injuries that occurred at midblock locations. Data is based off of NYSDOT/NYS DMV crash and injury data available as of 2/2022

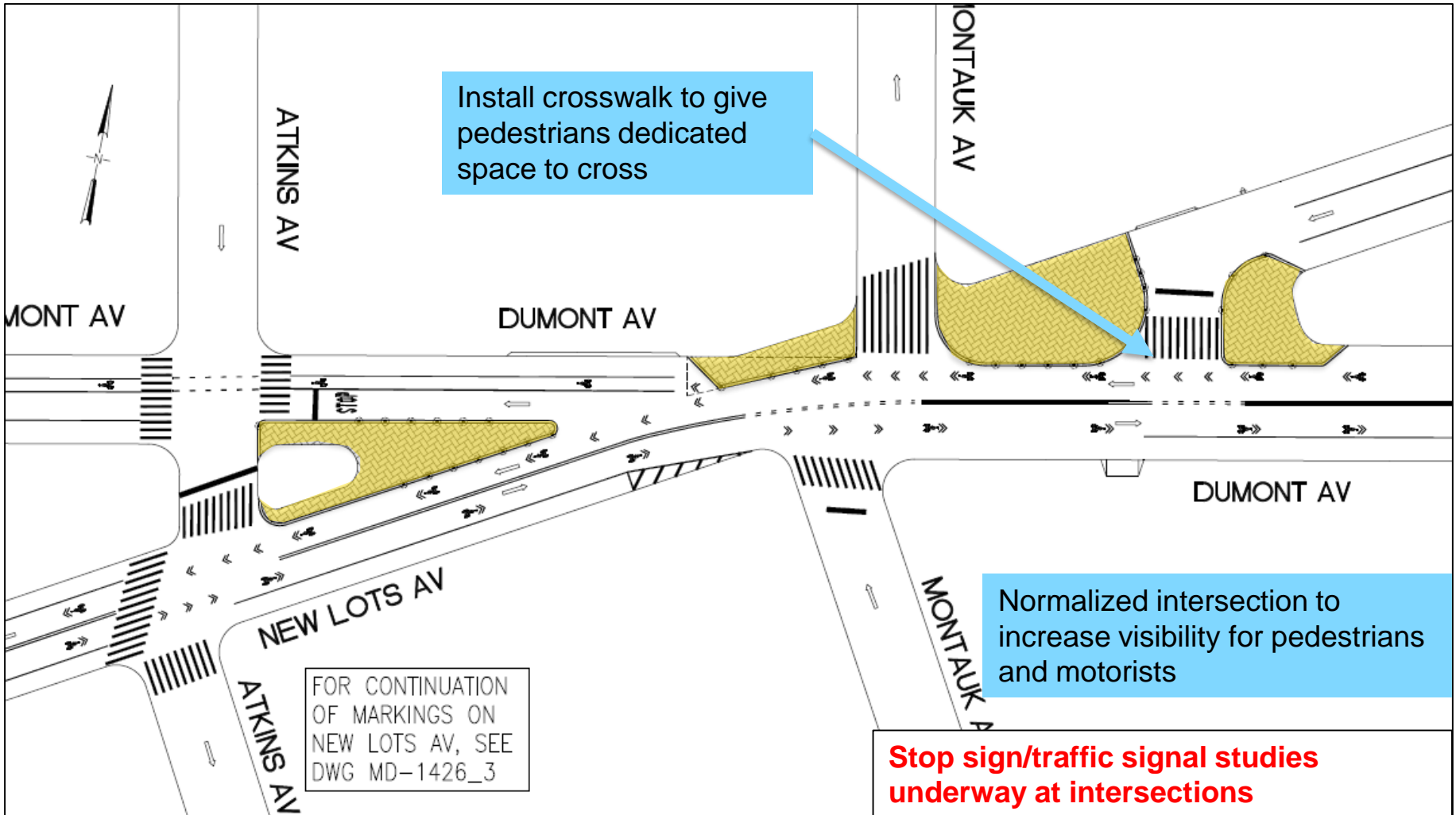
Dumont Ave and New Lots Ave Bowtie

Existing: Irregular Intersection



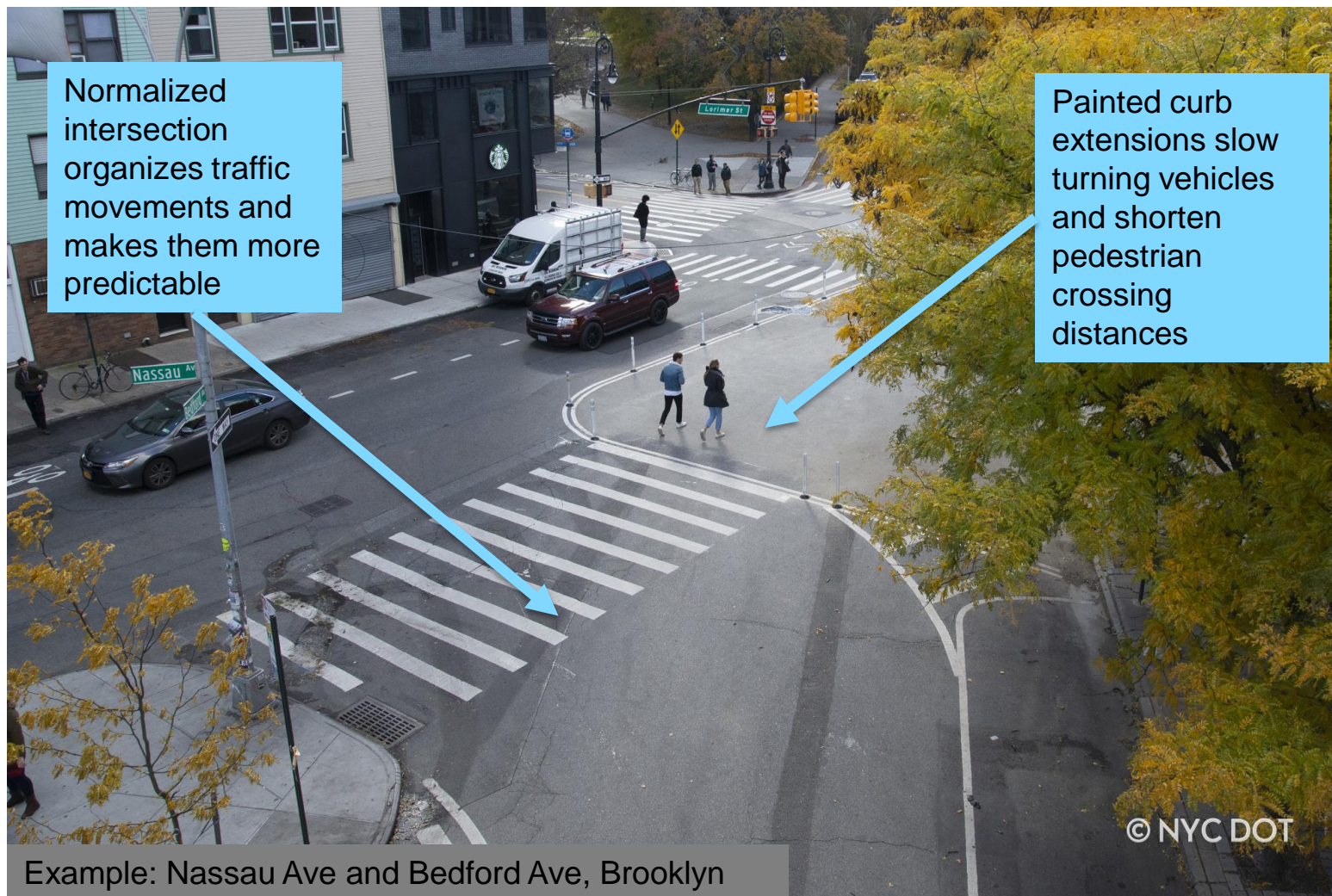
Dumont Ave and New Lots Ave Bowtie

Proposal: Intersection Normalization



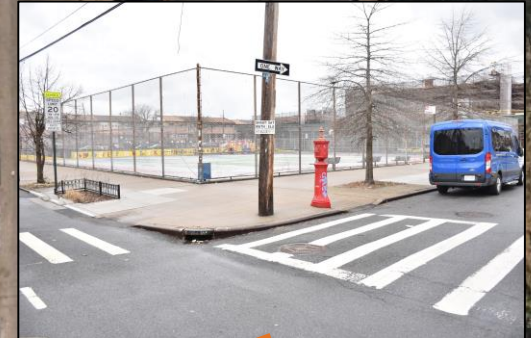
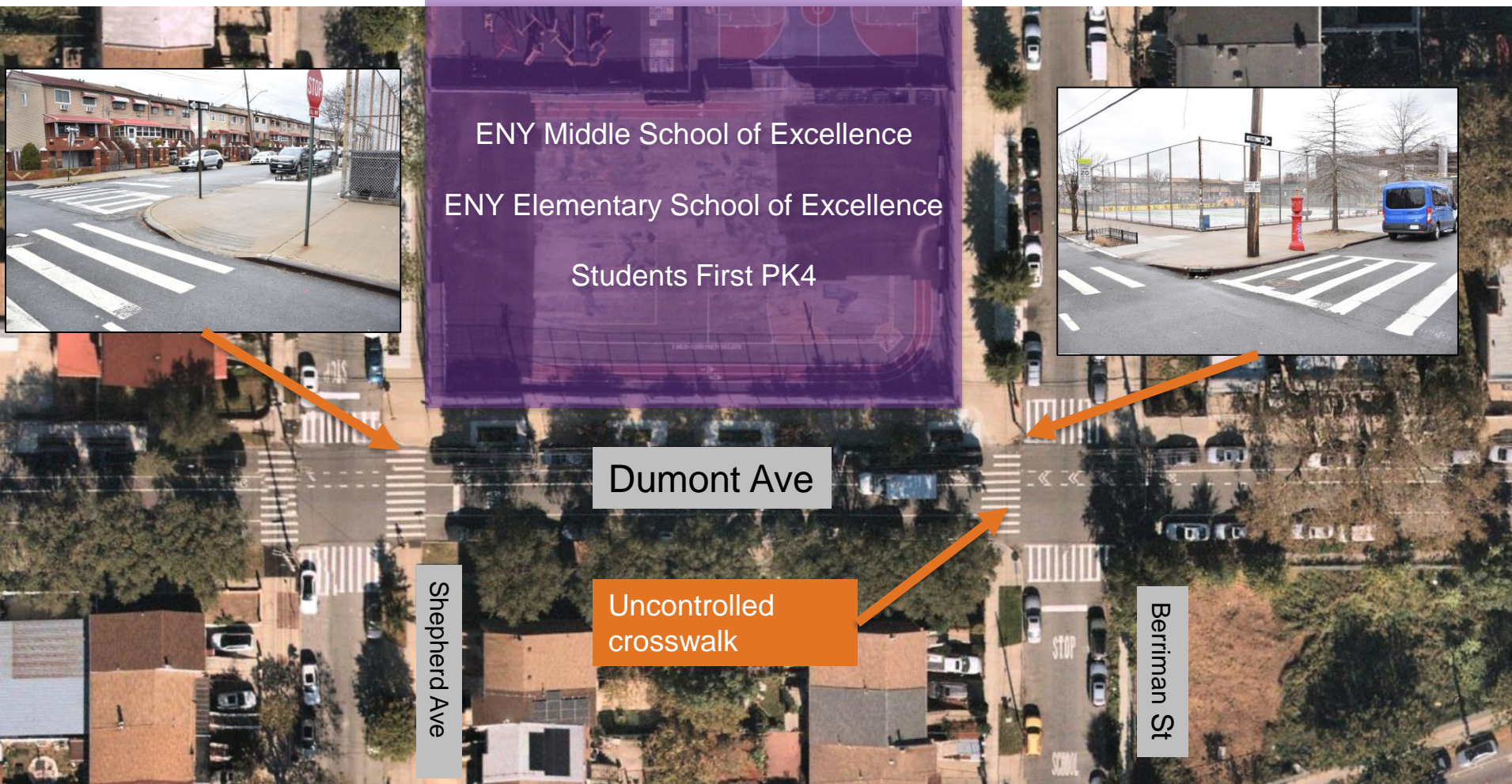
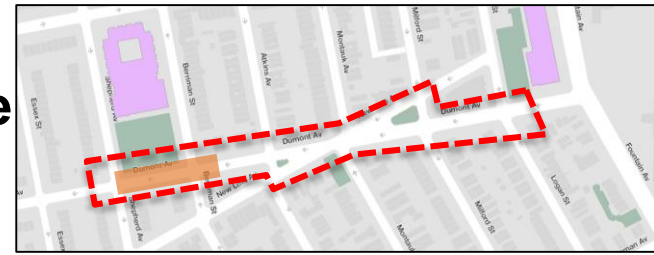
Dumont Ave and New Lots Ave Bowtie

Example of Painted Curb Extensions and Normalized Intersection



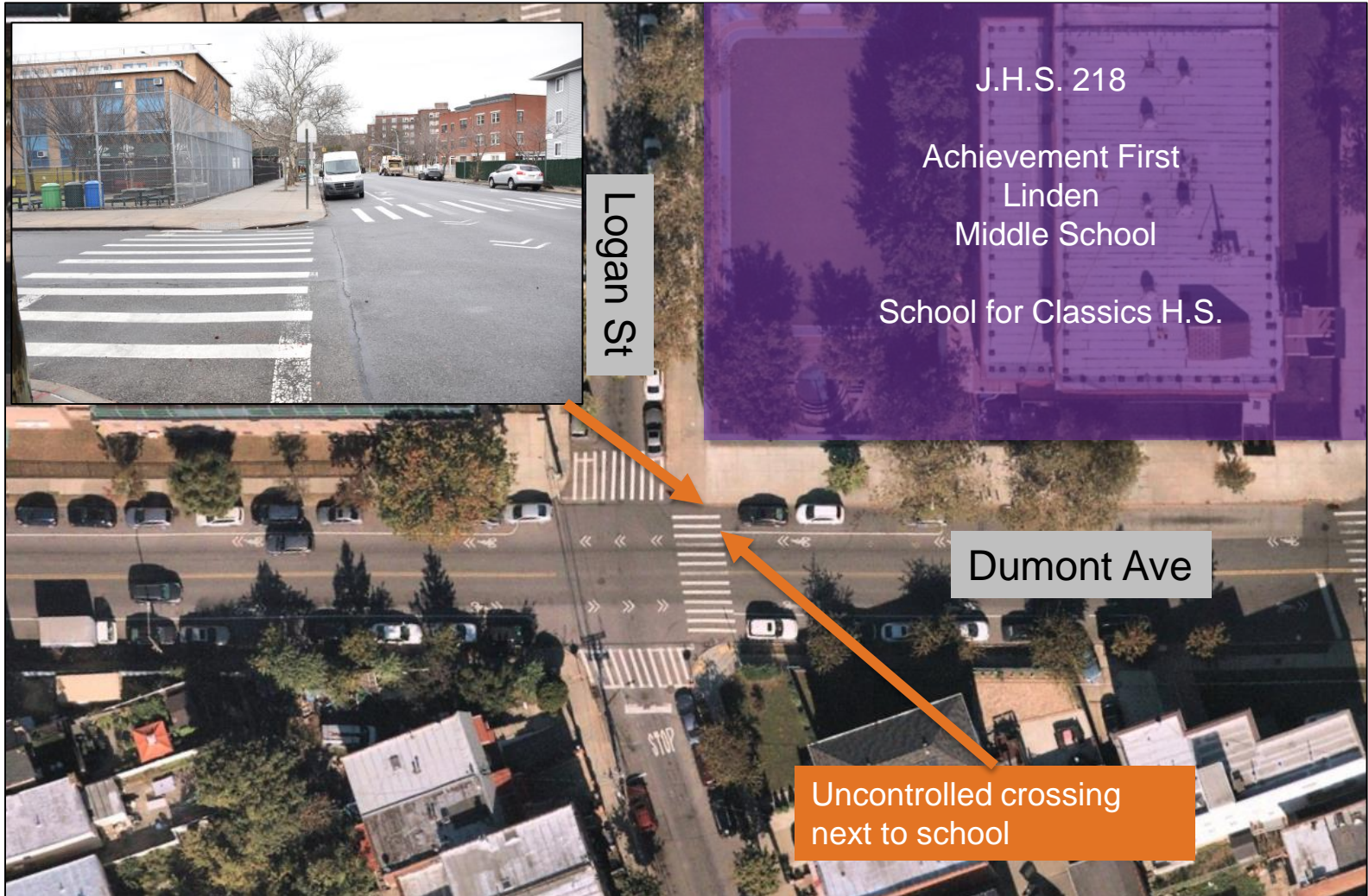
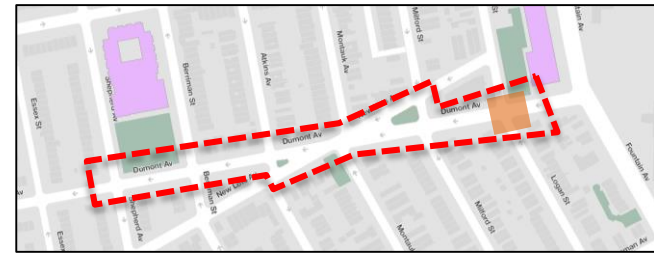
Dumont Ave at Shepherd Ave and Berriman Ave

Existing Conditions



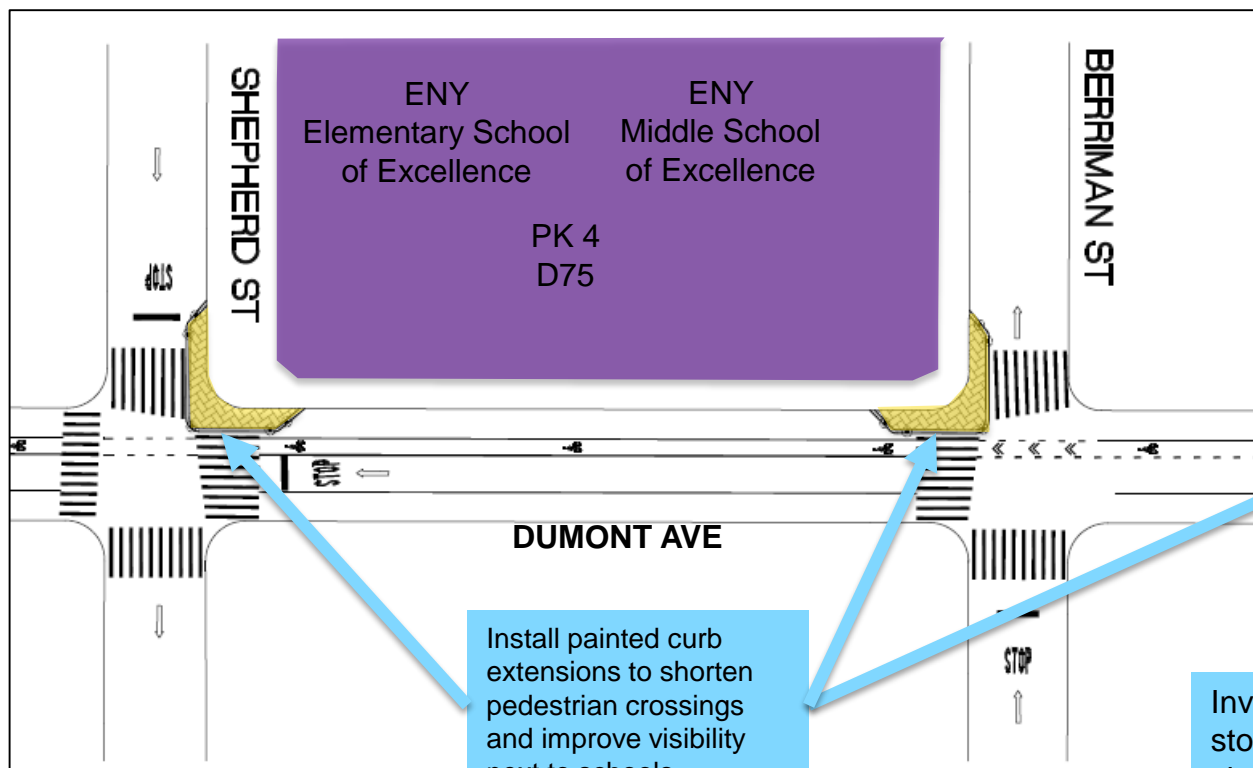
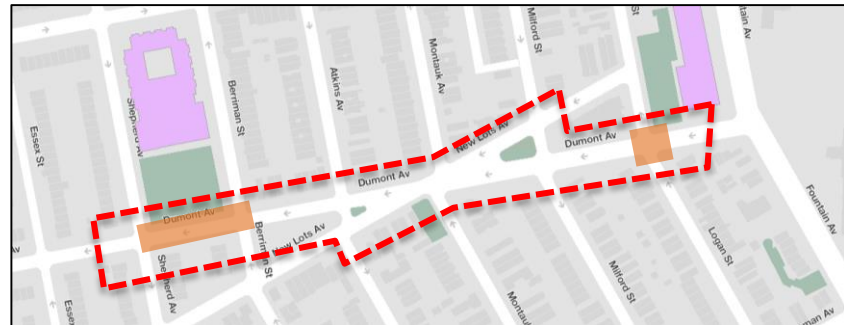
Dumont Ave and Logan Ave

Existing Conditions

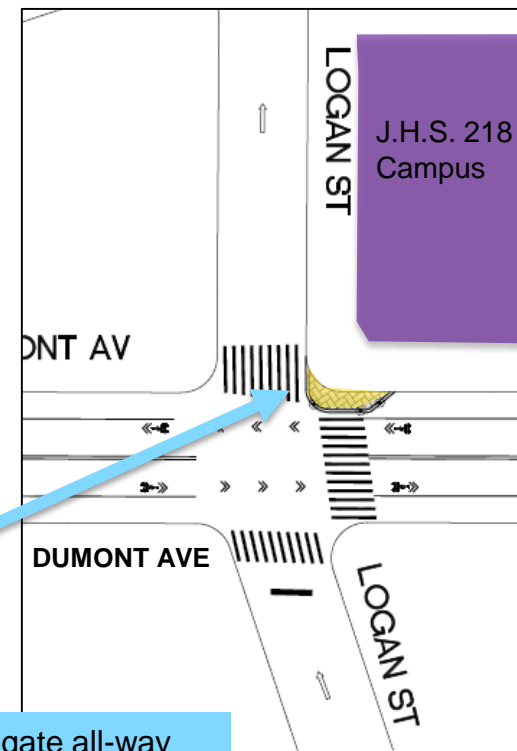


Dumont Ave, Fountain Ave to Shepherd Ave

Proposal: Curb Extensions



Install painted curb extensions to shorten pedestrian crossings and improve visibility next to schools



Investigate all-way stop controls and signals at uncontrolled intersections

Dumont Ave, Fountain Ave to Shepherd Ave

Proposal: Curb Extension



Example: St. Marks Ave and Classon Ave, Brooklyn

Thank You!



Contact: NYCDOT Brooklyn Borough Commissioner's Office – (646) 892-1350



NYCDOT



nyc_dot



nyc_dot



NYCDOT