

York, Jay, and Pearl Streets

Intersection Improvements and Bicycle Facility

2015



New York City Department of Transportation

Presented by the Pedestrian Projects Group January 20, 2015 to the Brooklyn Community Board 2 Transportation Committee



Project Area & Background

- DUMBO has abnormal street grid conditions due to the Manhattan Bridge and BQE structures
 - atypical pedestrian access
 - challenging sight lines
- Walkthrough with community December 2013
- Request from BID February 2014 for bicycle and pedestrian improvements at 12 locations
 - 8 addressed by other units
 - 4 became proposal
- Correspondences with CM Levin's office in May 2014
- Includes elements of Transportation Alternatives' Jay St Reimagining
- Nearby Capital Project – presented July 2013



Rapid Response Toolkit

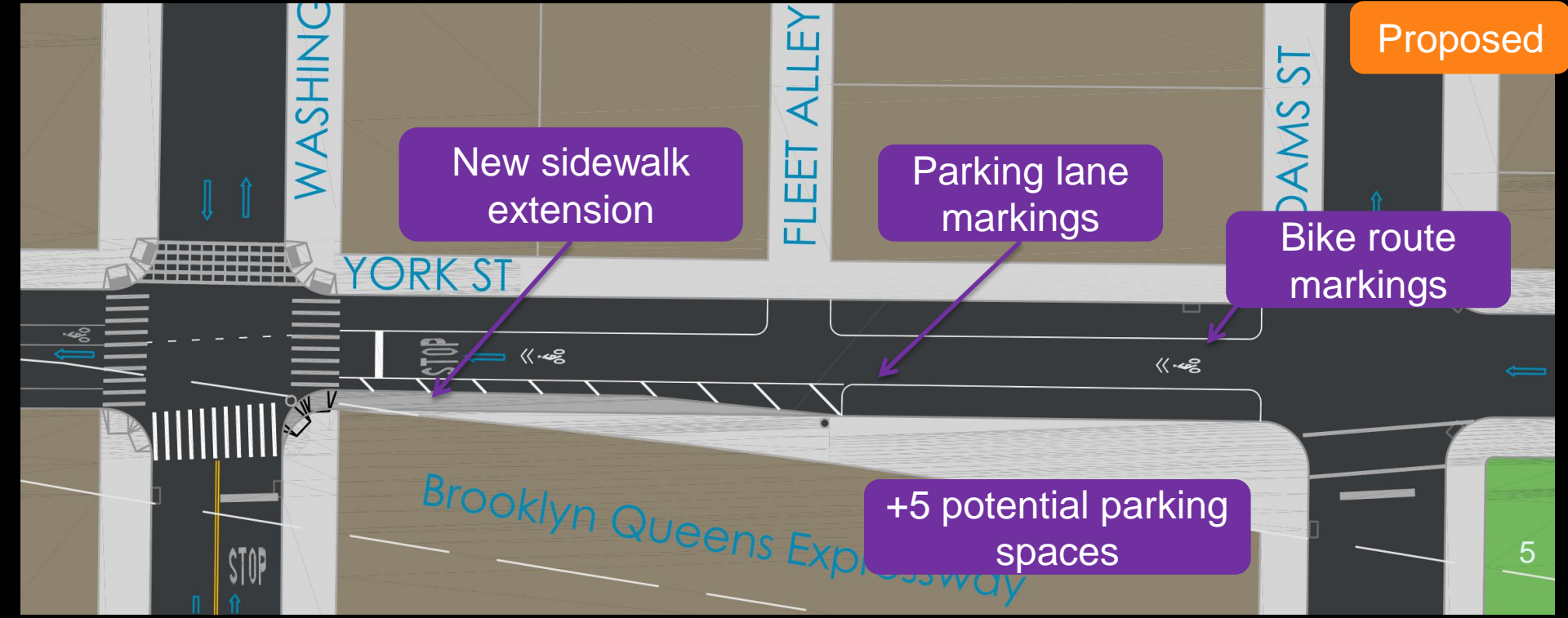
- Pavement markings
- New signage
- Painted and/or textured surfaces
- Concrete triangle and neckdown
- Granite paver crosswalk treatment
- Signals



York St & Washington St



York St & Washington St



Proposed

New sidewalk extension

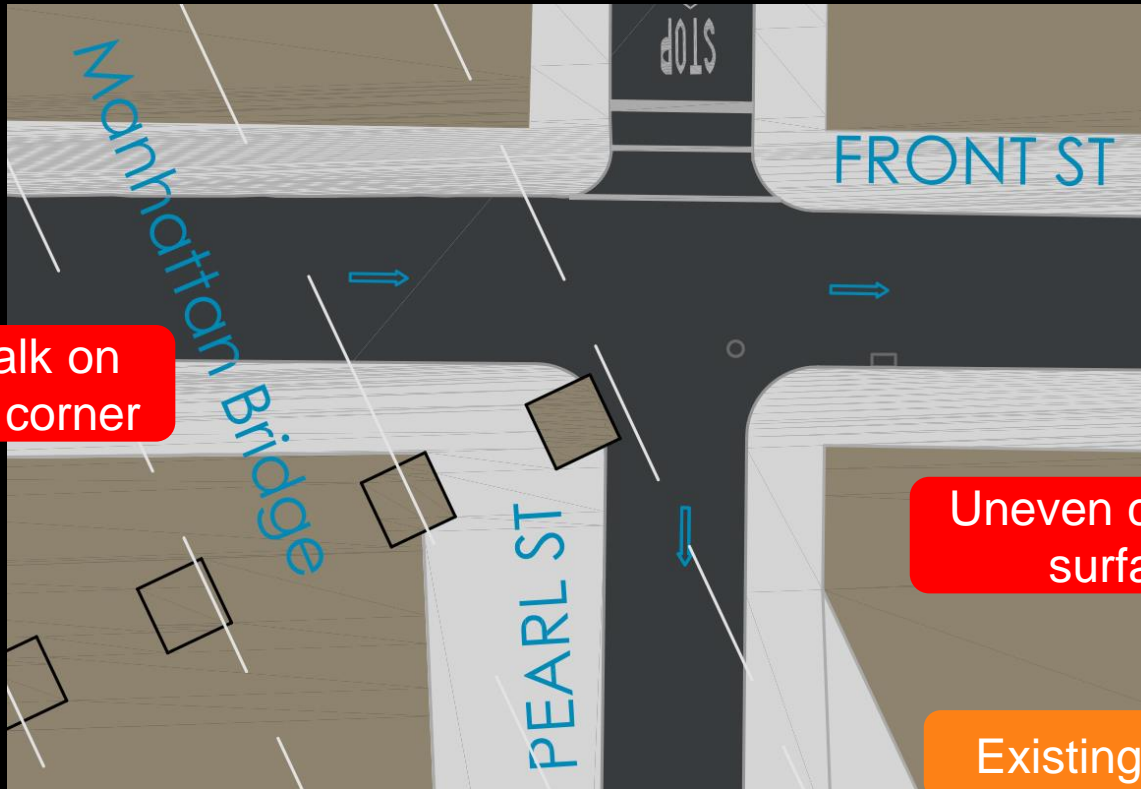
Parking lane markings

Bike route markings

+5 potential parking spaces

5

Front St & Pearl St

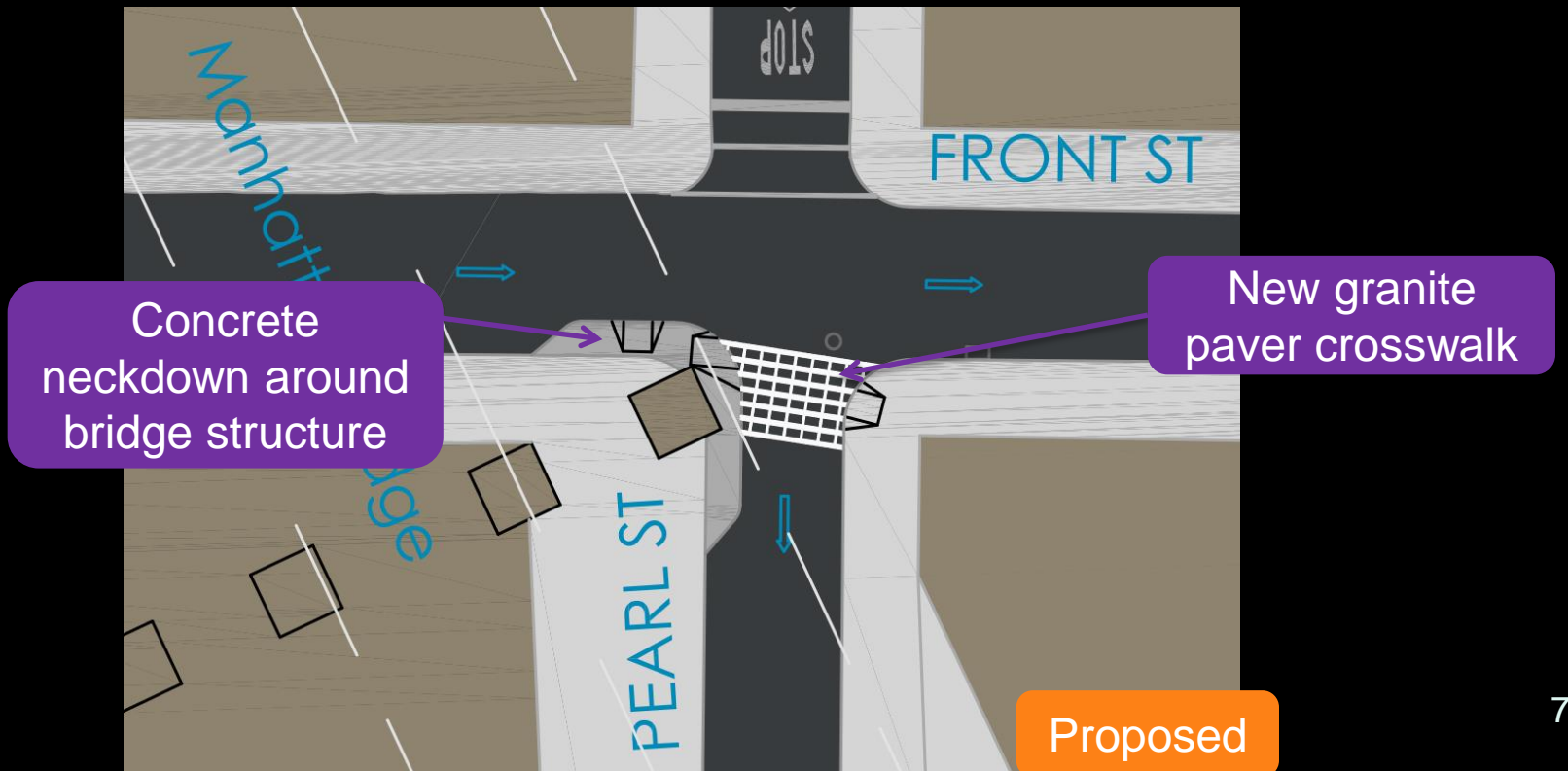


No sidewalk on southwest corner

Uneven crossing surface

Existing

Front St & Pearl St



York St & Pearl St



Uneven mix of asphalt and cobblestones



Wide pedestrian crossings

Excessive roadbed

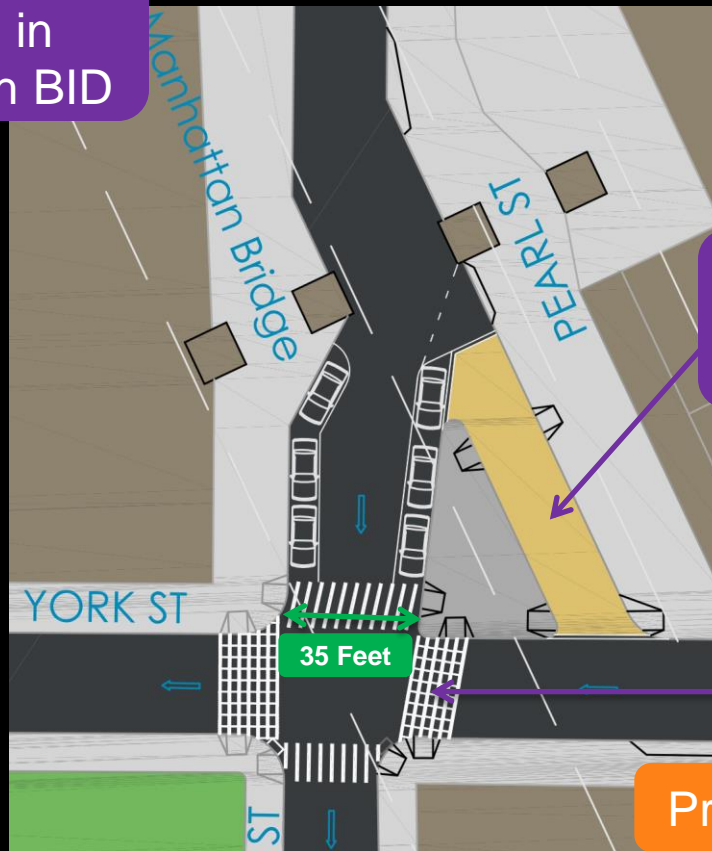
Indirect pedestrian path

Existing

York St & Pearl St



DOT sponsored programming in coordination with BID

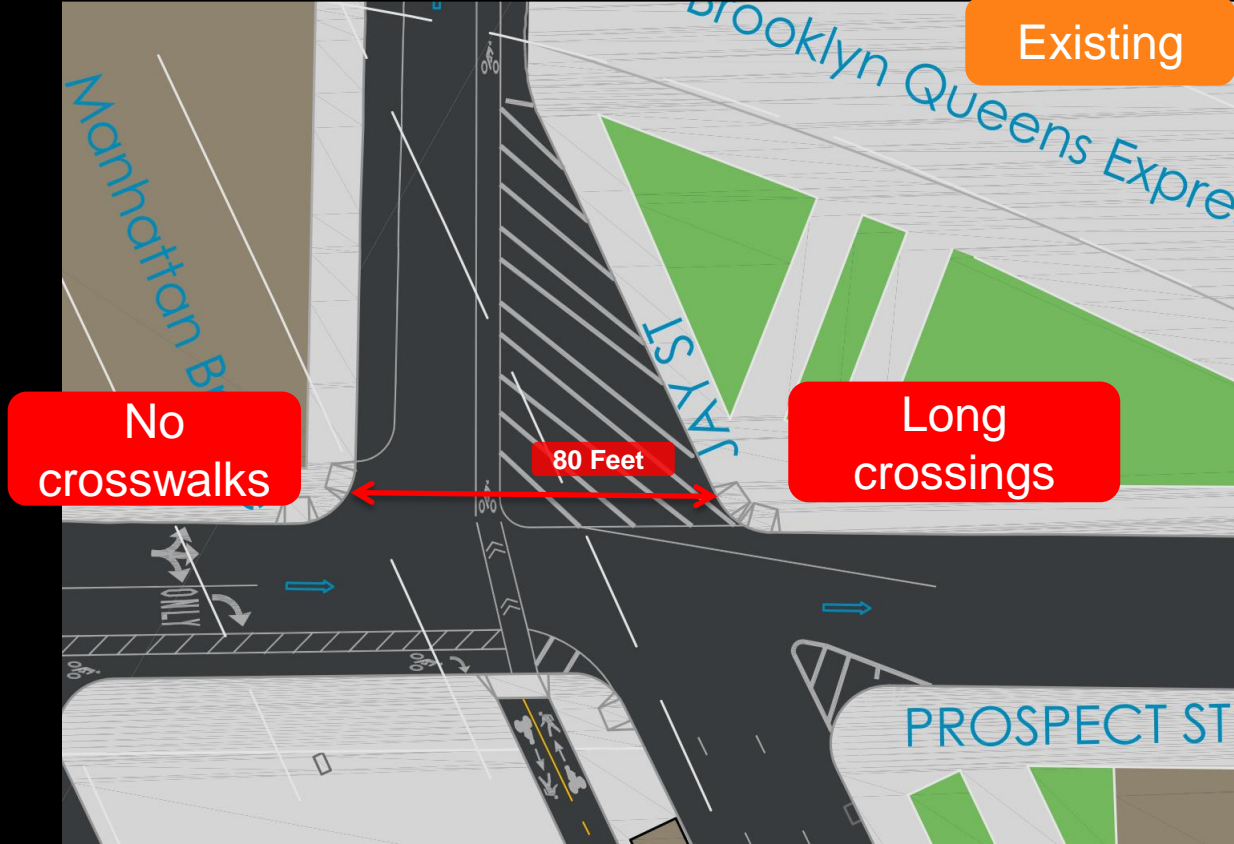


Extended sidewalk space in paint and concrete

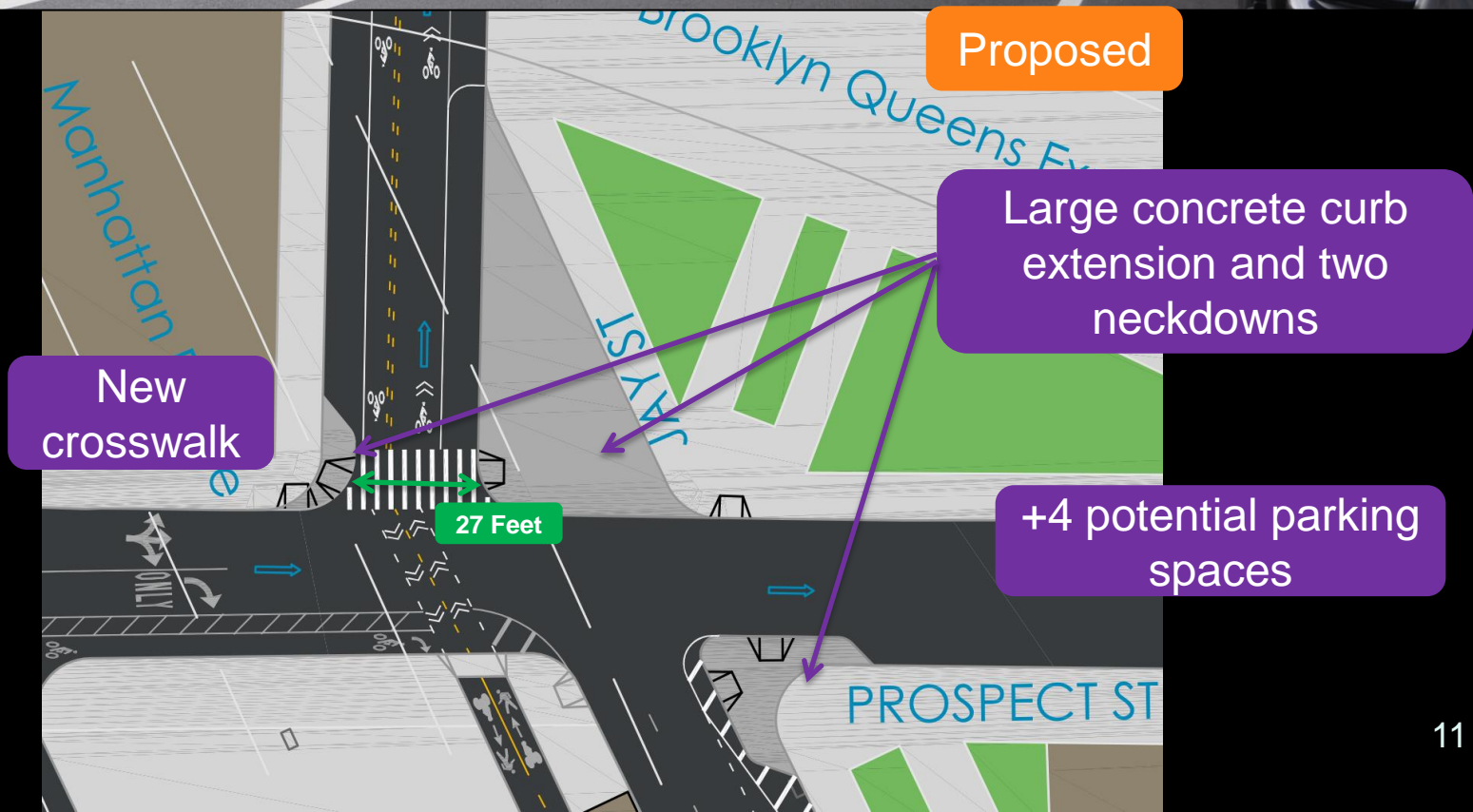
New granite paver crosswalks

Proposed

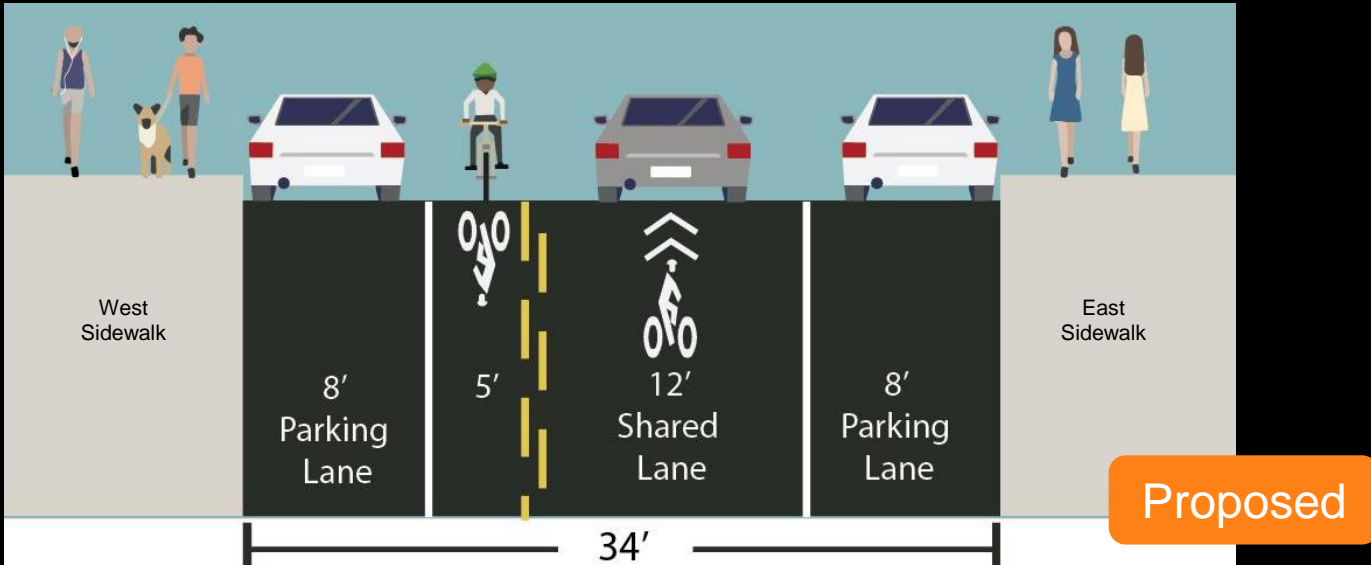
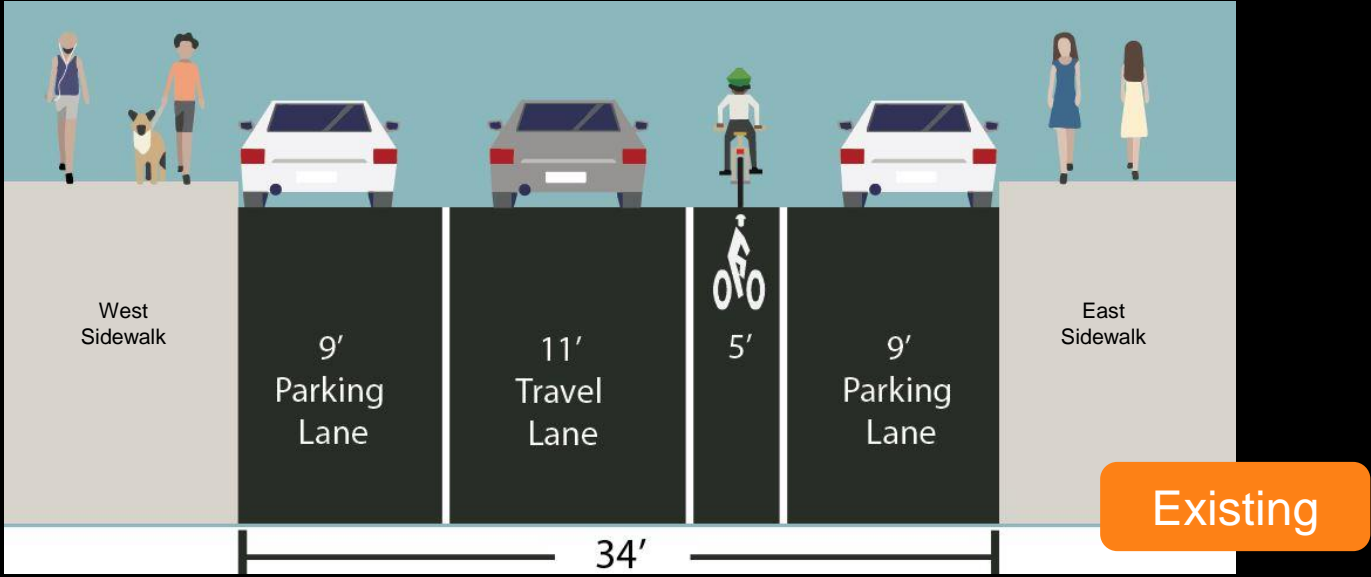
Jay St & Prospect St



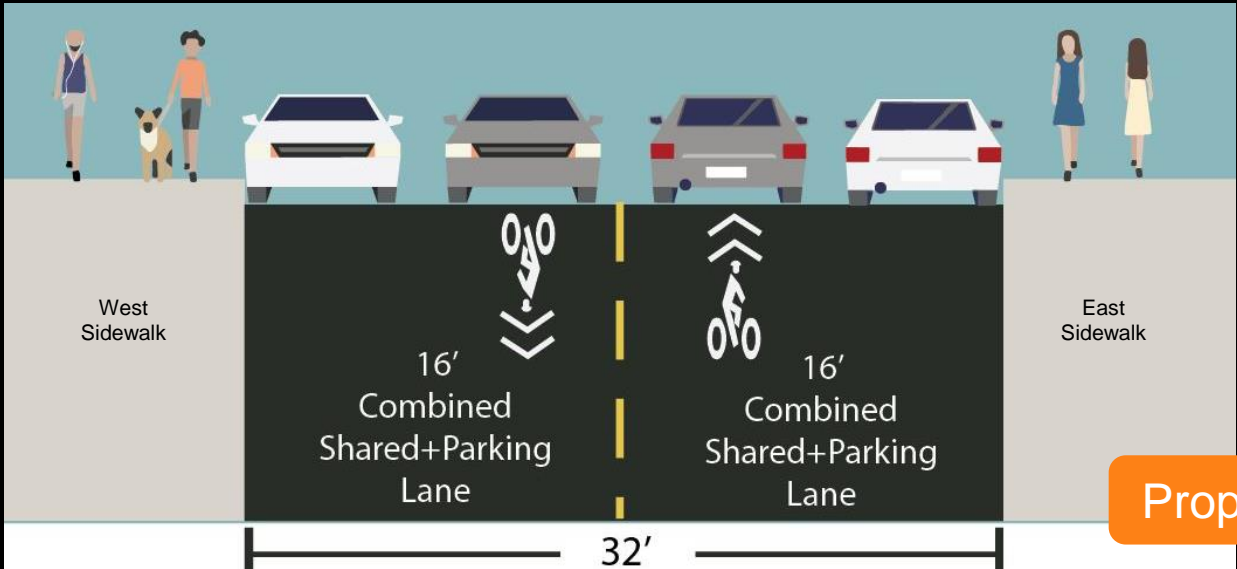
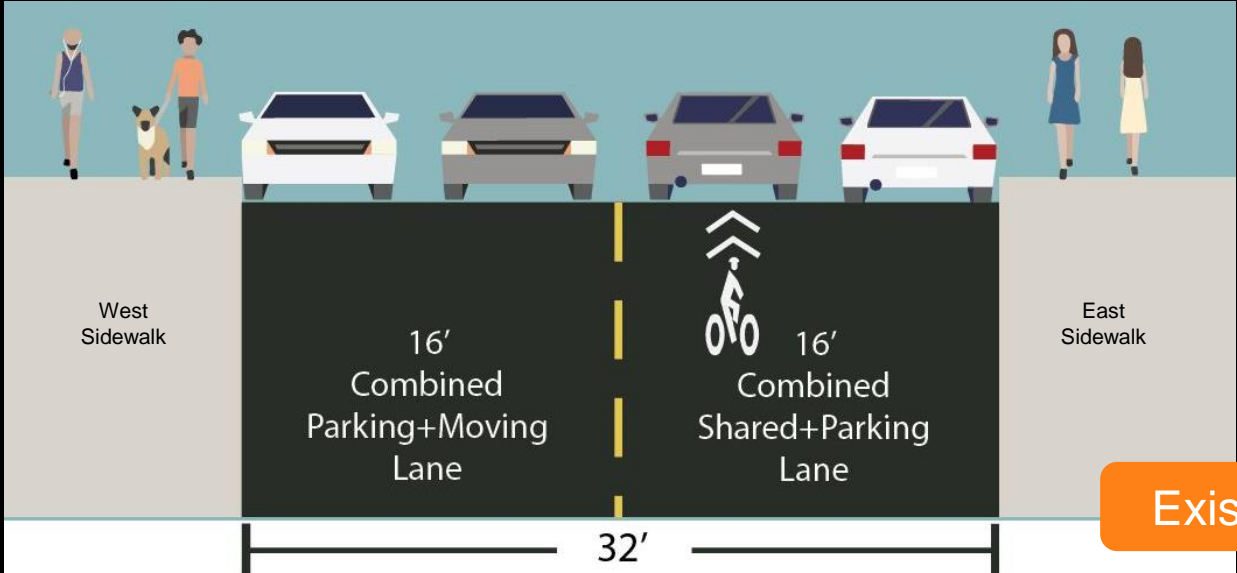
Jay St & Prospect St



Jay St between Prospect and York



Jay St between York and John



Benefits

1. Improves pedestrian access
2. Creates pedestrian connectivity
3. Calms traffic



Supported by DUMBO BID

Summary

1. York St and Washington St: build concrete sidewalk extension, mark parking lanes and bike route, and potentially add parking to the south curb.
2. Pearl St and Front St: build concrete neckdown and granite paver crosswalk
3. Pearl St and York St: build large concrete triangle island and painted pedestrian space, with two granite paver crosswalks
4. Jay St and Prospect St: build large curb extension on NE corner and neckdowns on NW and SE corners, mark crosswalk on the north leg. Potentially add parking along new concrete.
5. Jay St Corridor: mark contraflow bicycle lane between Prospect St and York St, mark two way shared lane between York St and John St.





www.nyc.gov/dot

Thank
You