



CYPRESS HILLS STREET JAMAICA AVE TO JACKIE ROBINSON PKWY

Presented to Brooklyn CB 5 Transportation Committee

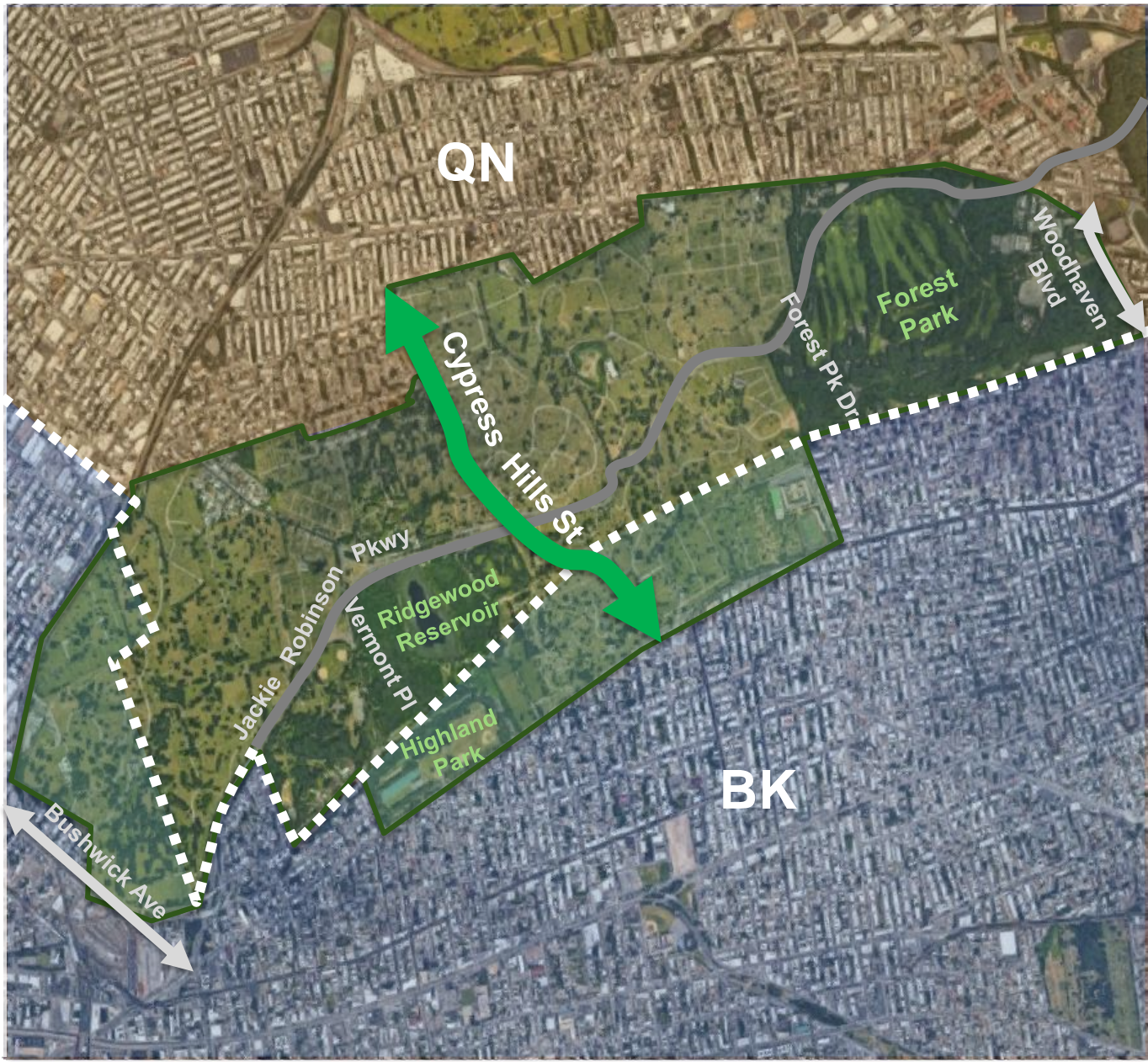
October 15, 2018



Cypress Hills St

Overview

- One of limited street connections **between Brooklyn and Queens** in the area
- Part of **greenway network** connecting parks in Brooklyn and Queens
- **Few destinations** along corridor: parkway on/off-ramps, cemetery entrances, bus stops
- Little sidewalk activity, and wide roadway, encourages **high vehicle speeds**



Biking In Brooklyn

Increased Ridership and Expanded Network

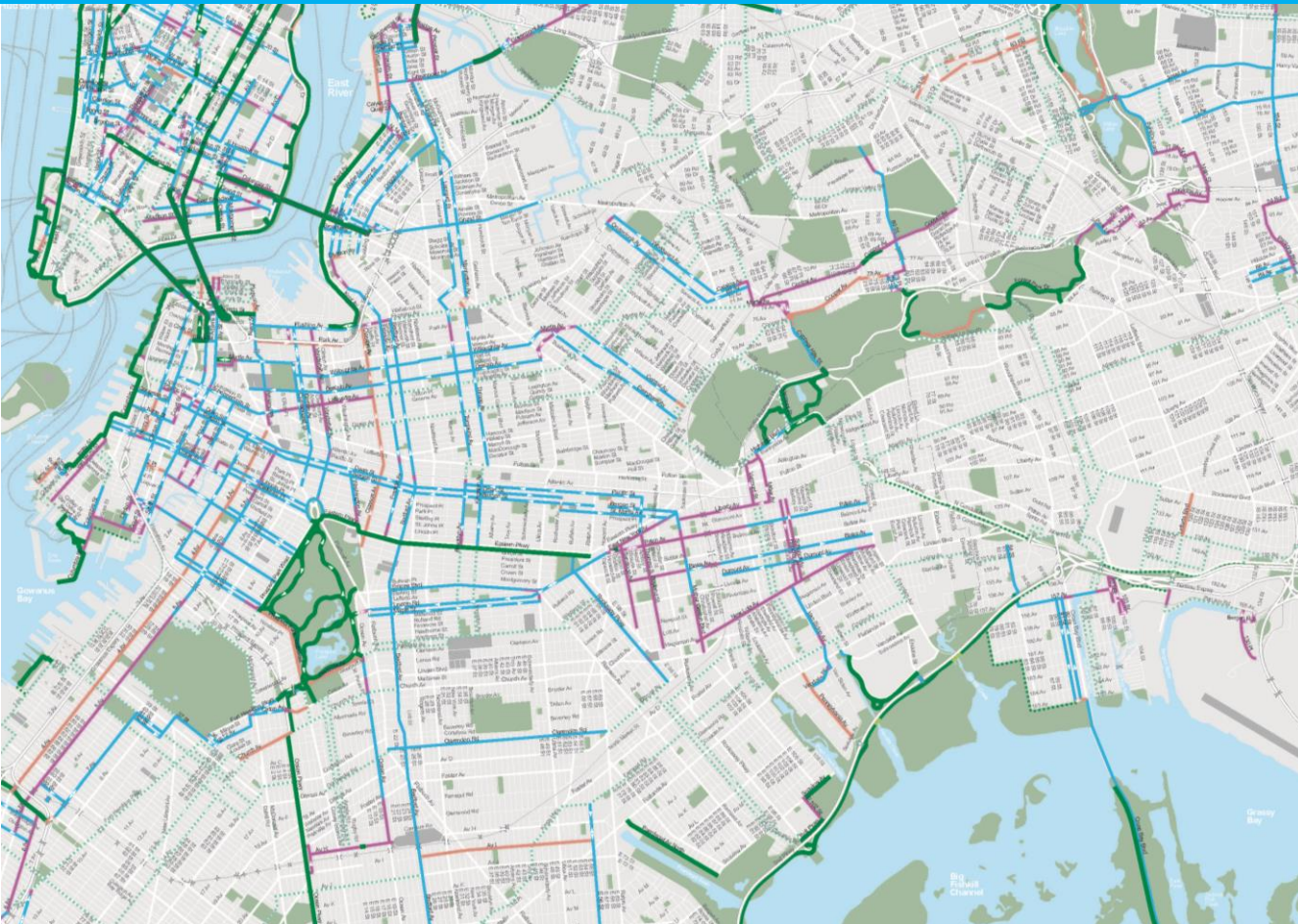
The number of people in Brooklyn biking to work increased

+ 65%
from 2011 – 2016

*Total Number of Cyclists in Brooklyn
US Census ACS – Journey to Work
(3 year rolling average)*

+ 60 lane miles
have been added to the bike network
in Brooklyn in the past 3 years

**Brooklyn CB 5 and
Queens CB 5** are identified as
Bicycle Priority Districts



Cypress Hills St

Previous Work

- 104th Precinct requested traffic calming and protection for bike lanes
- 2017 installation of protected bike lanes, painted sidewalk space, improved connection to Highland Park and points north



Cypress Hills Street



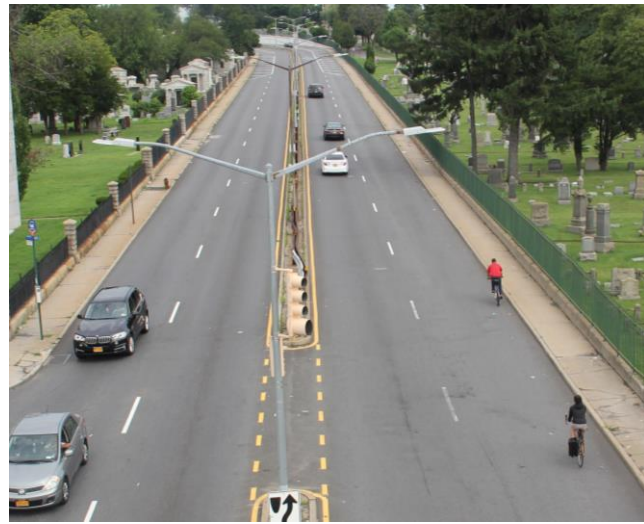
Cypress Hills St

Existing Conditions



Cypress Hills St, at Mt Hope Cemetery, facing south

- **1 travel lane in each direction**
Extra space is marked with channelization
- **2 lanes at intersections**
AM peak: 1,114 vehicles (northbound)
PM peak: 960 vehicles (southbound)
- **B13 bus route**
1 NB stop on Jamaica Ave
1 SB stop on Cypress Hills St



52 cyclists
counted in
12 hr period
(7am – 7pm,
October
2016)

Cypress Hills St

Proposal Overview

- *Install protected bike lanes in existing channelization from Jamaica Ave to Jackie Robinson Pkwy*
- *Install new pedestrian crossing at Jamaica Ave/Euclid Ave and Cypress Hills St*

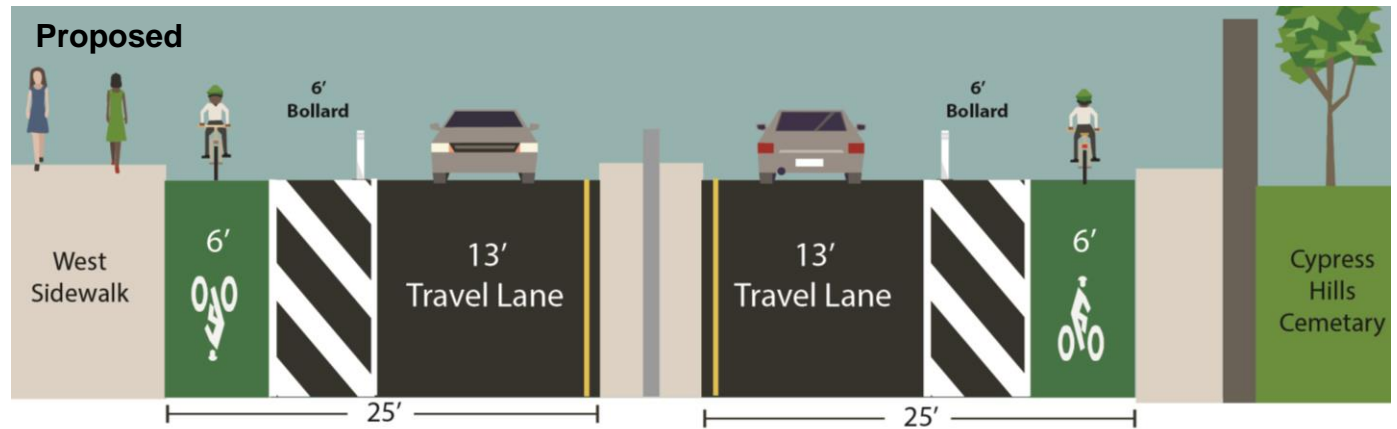
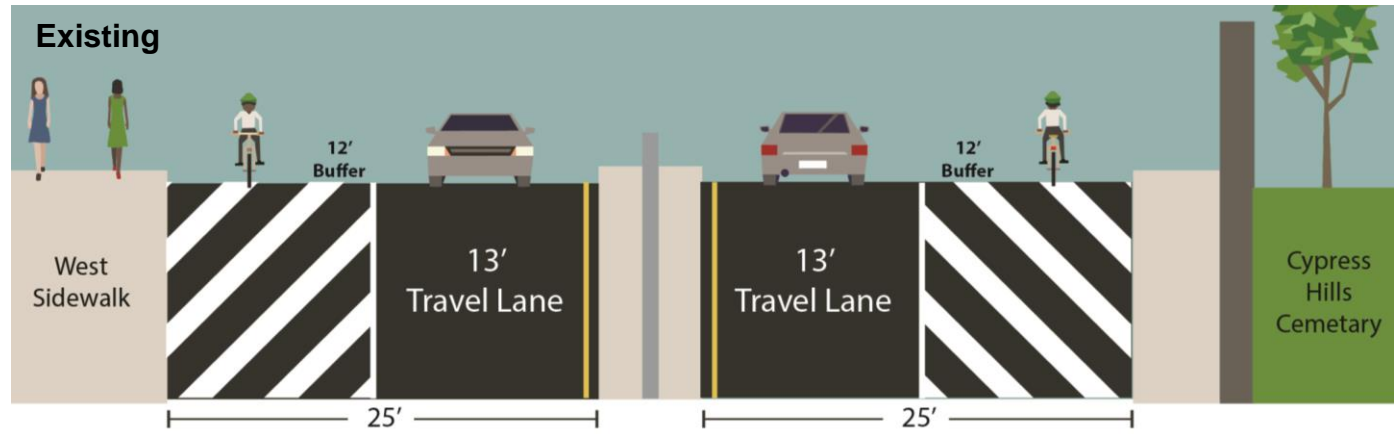


Cypress Hills St Proposal

Roadway has extra width for most of corridor

Curbside bike lanes protected by buffer and flexible delineators provide safe, comfortable cycling route

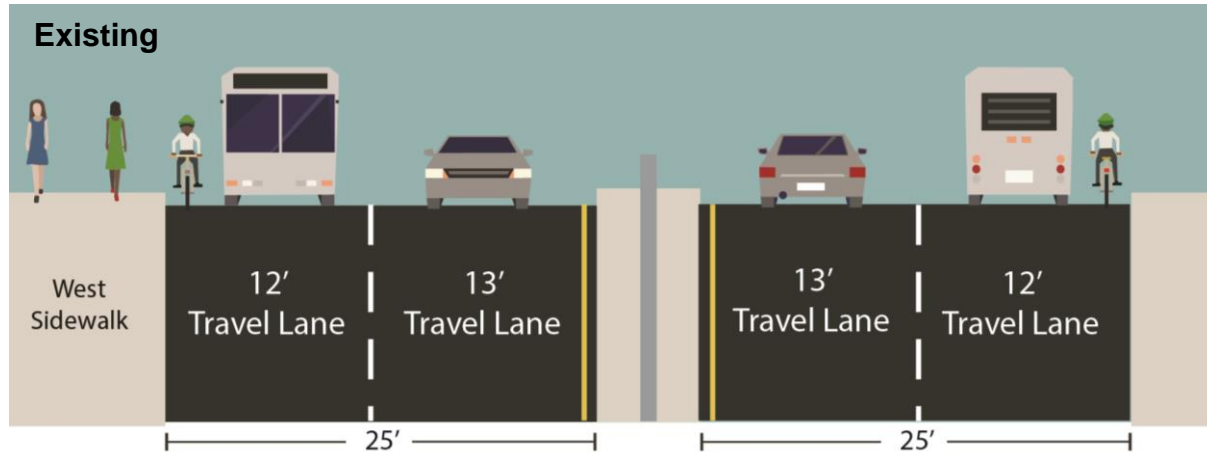
Delineators discourage speeding and erratic driving



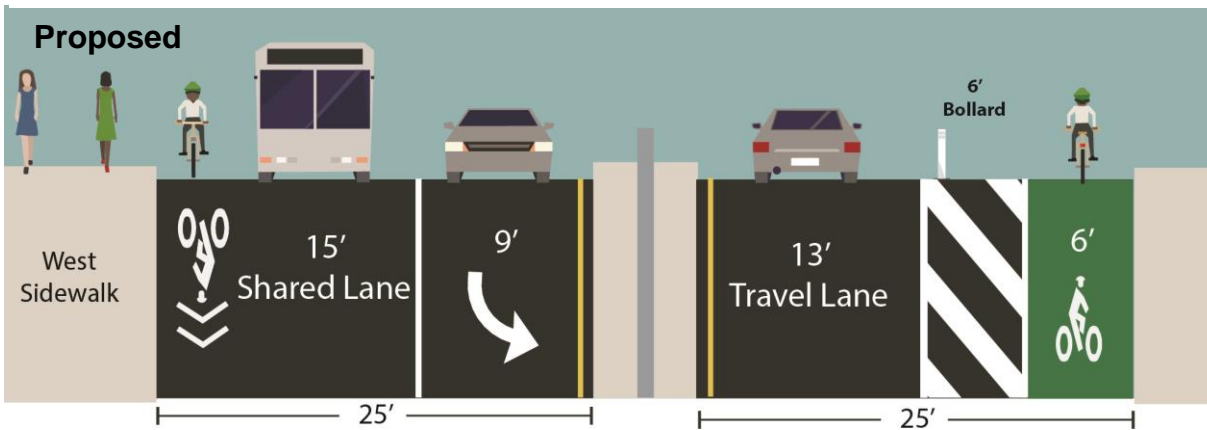
Cypress Hills St at Jamaica Ave

Proposal

Roadway splits into 2 lanes approaching intersection



Vehicle lanes maintained and marked for turns in the SB direction



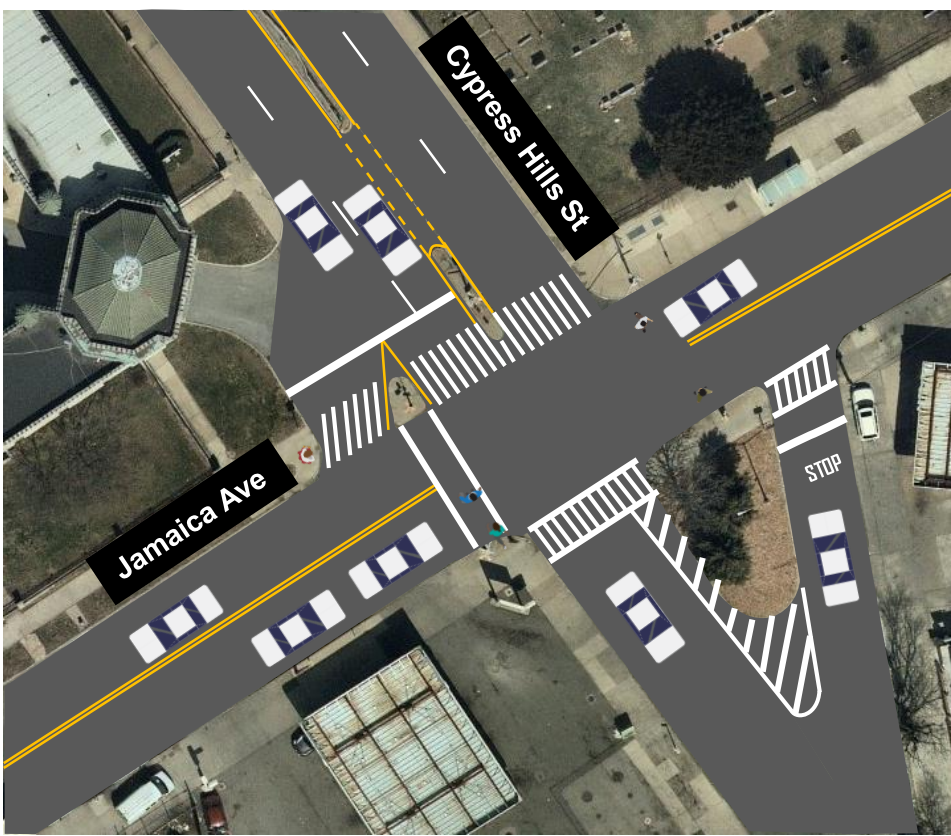
Updated signal timing enables 1 lane to process NB vehicles

Two lanes will also be maintained approaching Jackie Robinson Pkwy

Cypress Hills St at Jamaica Ave

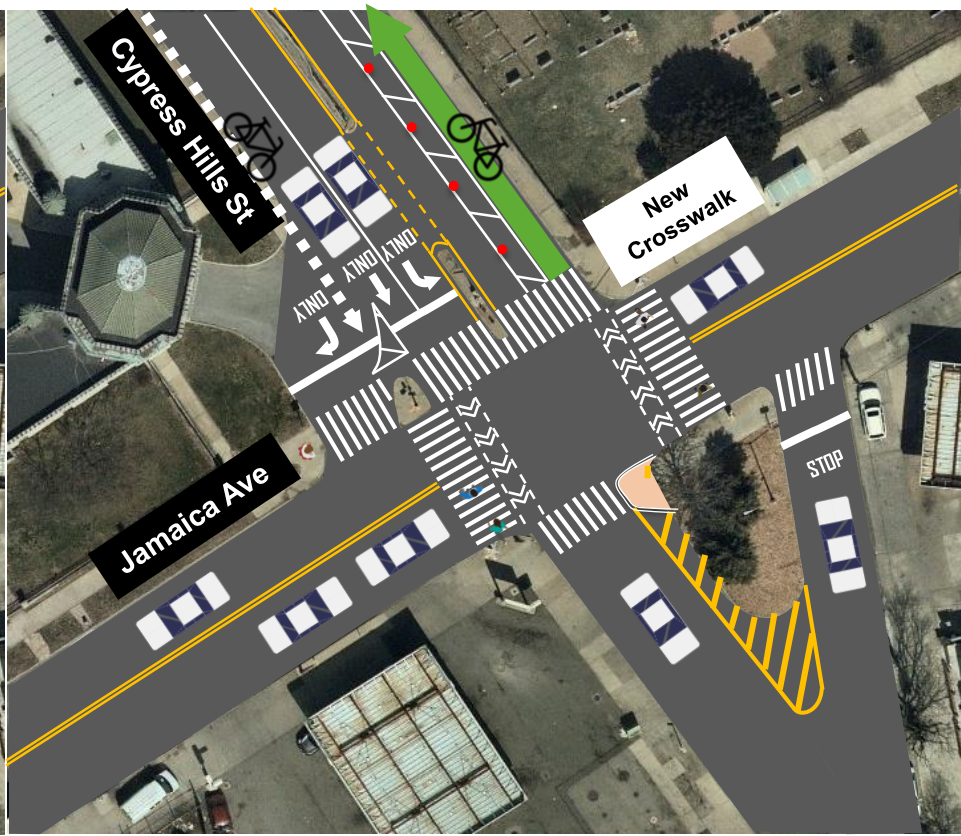
Proposal

Existing



No pedestrian crossing on east side of intersection, RT onto Cypress Hill St always green

Proposed



Updated signal timing enables installation of new pedestrian crossing and safe bike access

Cypress Hills St

Benefits

- *Reduces speeding / calms traffic*
- *Adds bike connection on a key inter-borough corridor with links into Cypress Hills neighborhood*
- *Safe, convenient cycling routes connecting Cypress Hills to Highland Park, Ridgewood Reservoir, Central Queens Greenway*
- *New, safer pedestrian crossings*

Existing Conditions: Cypress Hills St, south of JR Pkwy



Proposed Configuration: Honeywell St Bridge, Queens



THANK YOU!

Questions?



NYC DOT



NYC DOT



nyc_dot



NYC DOT