



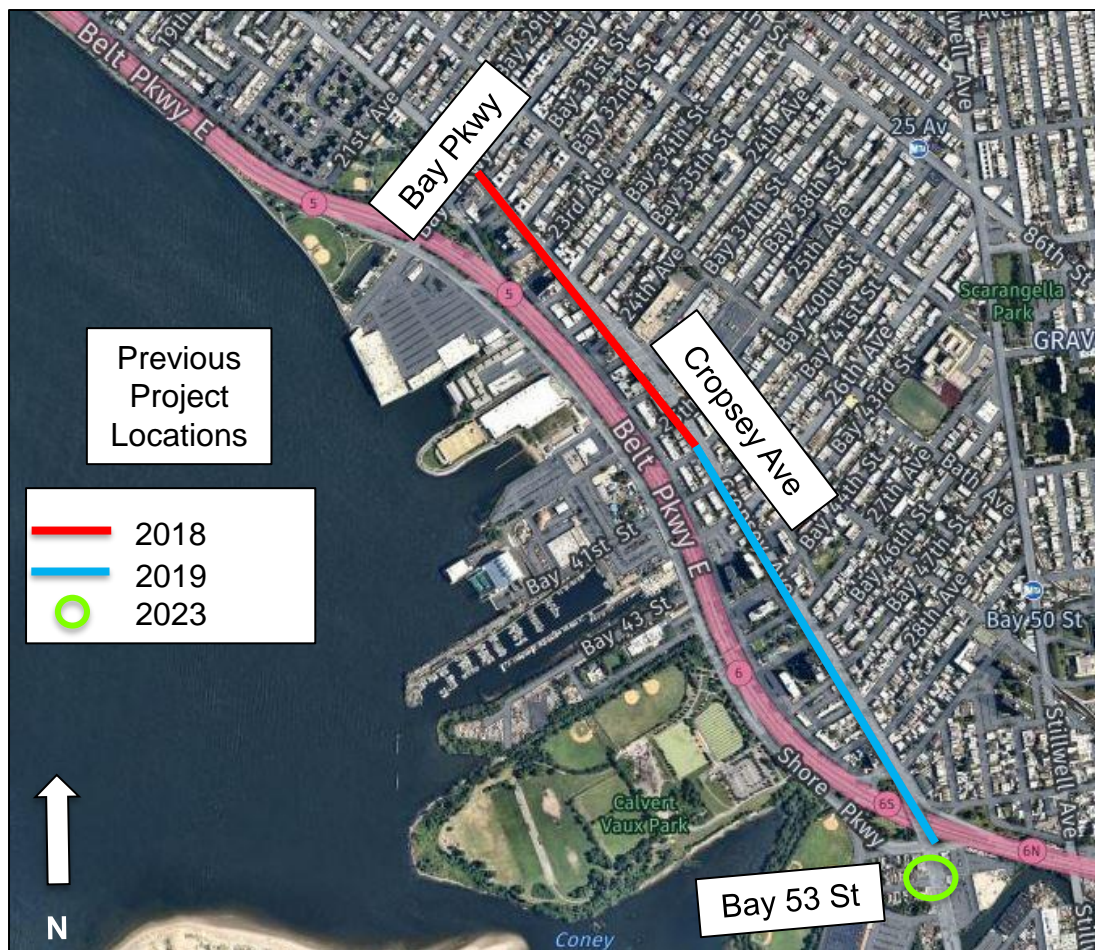
Cropsey Avenue & Bay 53 St

Intersection Safety Improvements

2023 Street Improvement Project

Project Location

- Project location: Cropsey Ave & Bay 53 St
- South of Belt Pkwy entrance
- Commercial land use
- Previous safety improvements on Cropsey Ave in 2018 and 2019 between Bay Pkwy & Bay 52 St



Previous Improvements

- Expanded median tips and concrete islands shorten crossing distances and provide refuge for pedestrians
- Expanded median tips encourage slower, safer turns by vehicles
- Improved markings clarify roadway and discourage speeding on Cropsey Ave



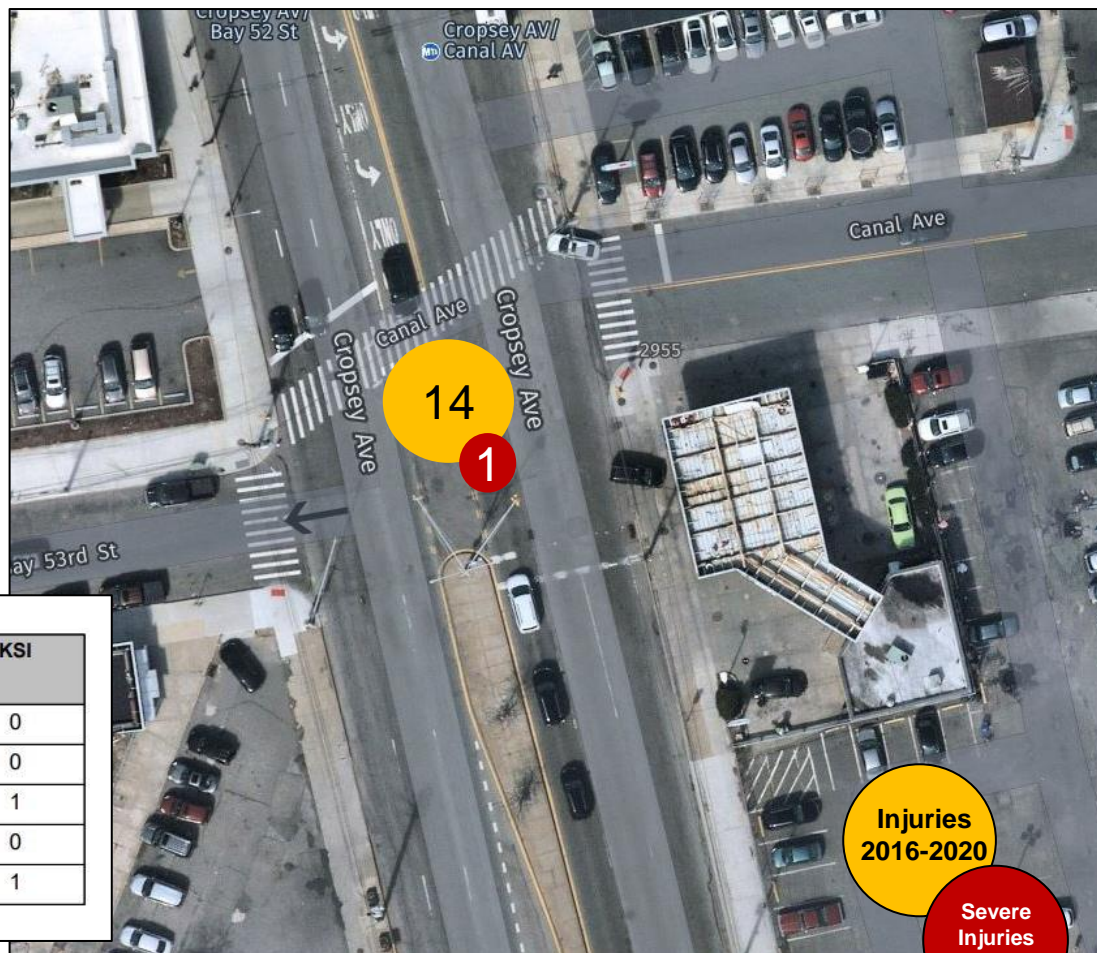
Existing Conditions

- High crash intersection with 13 injuries and 1 serious injury to a motor vehicle occupant

Injury Summary, 2016-2020 (5 Years)

Mode	Total Injuries	Severe Injuries	Fatalities	KSI
Pedestrian	0	0	0	0
Bicyclist	0	0	0	0
Motor Vehicle Occupant	14	1	0	1
Other Motorized	0	0	0	0
Total	14	1	0	1

Source: Fatalities: NYCDOT, Injuries: NYSDOT KSI: Persons Killed or Severely Injured



**Injuries
2016-2020**

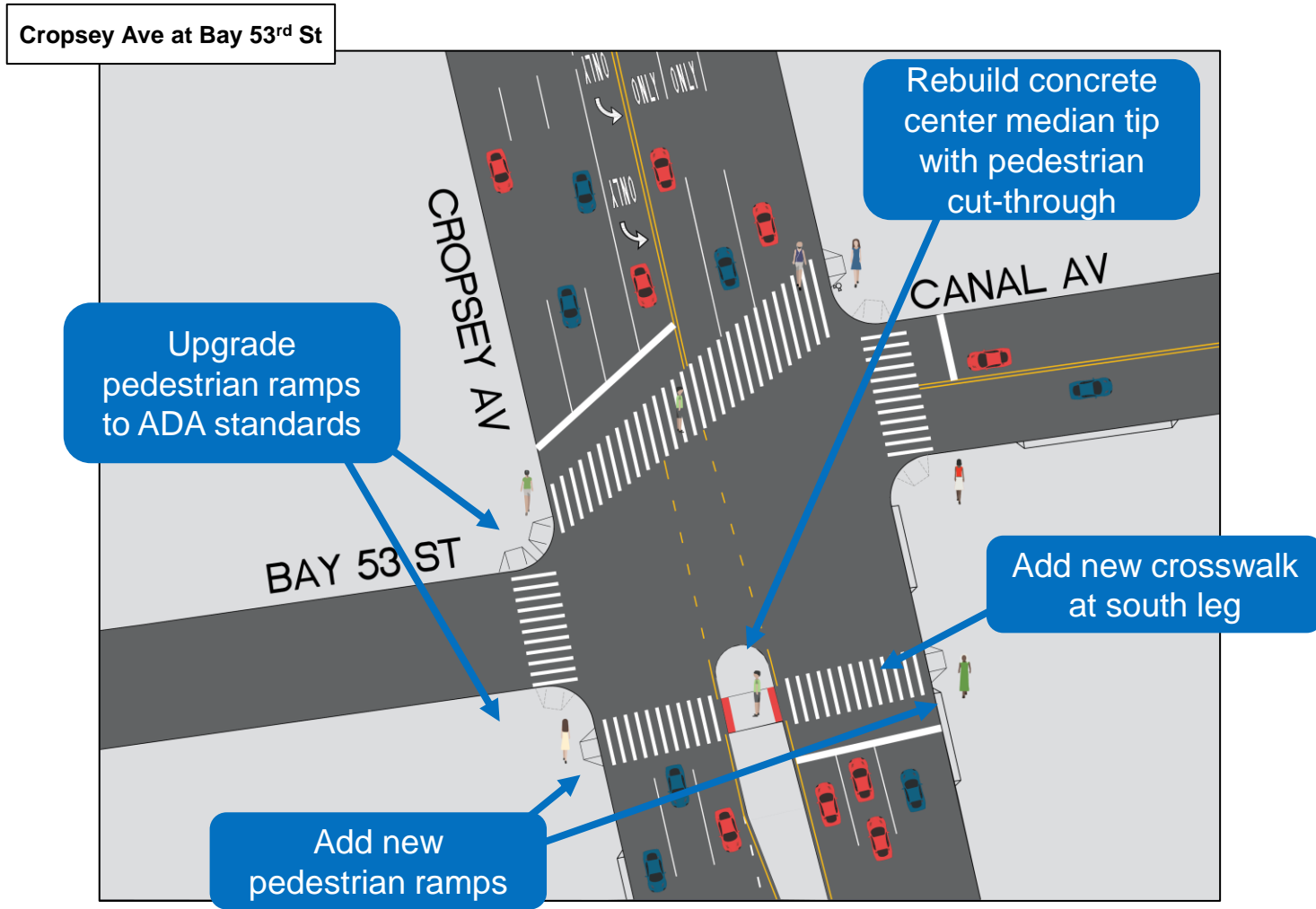
**Severe
Injuries
2016-2020**

Existing Conditions

- No safe pedestrian crossing at the south leg of the intersection
 - Existing demand for safe crossing
 - Existing concrete median has no accessible pedestrian cut-through and does not provide safe refuge
- Existing pedestrian ramps at corners below ADA legal standards



Proposal



Summary

- Adding a marked crosswalk with median cut-through and ADA accessible pedestrian ramps will provide safe refuge for pedestrians crossing Cropsey Ave at Bay 53 St
- An accessible crossing will bring safety improvements to Cropsey Ave & Bay 53 St similar to those installed by DOT from Bay Pkwy – Bay 52 St since 2018



Thank You!

Questions?



NYC DOT



NYC DOT



nyc_dot



NYC DOT