



CORPORAL KENNEDY ST / 23RD AVE

NYC DOT's PPG Presentation to Community Board 7
Transportation Committee

March 8, 2017





Contents

1. Background and Existing Conditions
2. Tools for Improvement
3. Proposal

PROJECT AREA

Corporal Kennedy St / 23 Ave

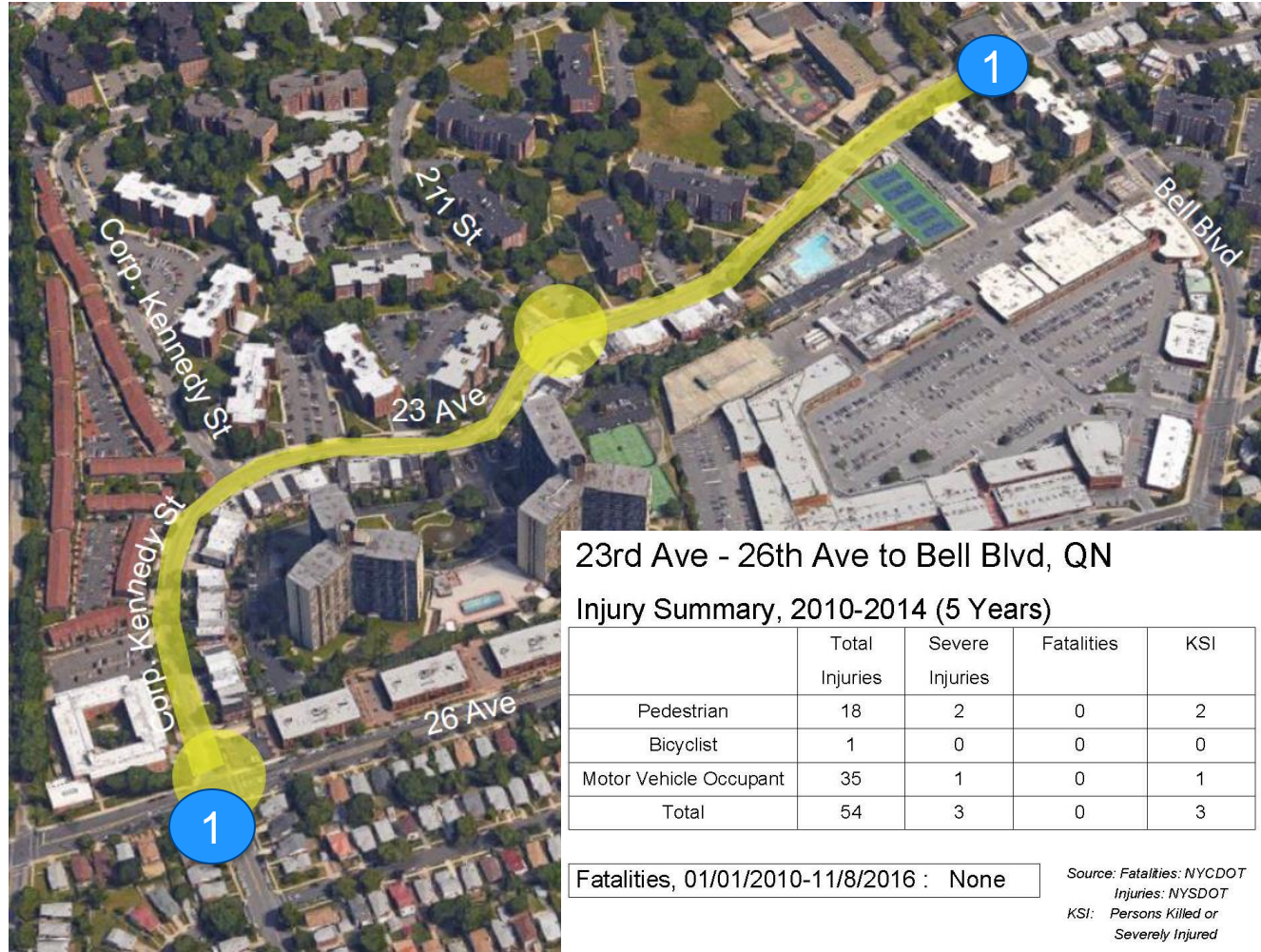
- Residential neighborhood near the Bay Terrace shopping center, Clearview Senior Center, Bell Academy and PS 169
- Served by the Q28, QM2 and QM20 bus lines
- Curving corridor creates limited sightlines
- Access to/from Clearview Expressway at 26th Ave



BACKGROUND

Corporal Kennedy St / 23 Ave

- Numerous requests, including from elected officials, have requested pedestrian safety improvements at Corporal Kennedy St / 26 Ave as well as on 23rd Ave corridor
- CM Vallone hosted Town Hall meeting in February 2016 and discussed traffic safety in the area
- Long 2500 foot stretch between 26 Ave and 212 St without a protected pedestrian crossing

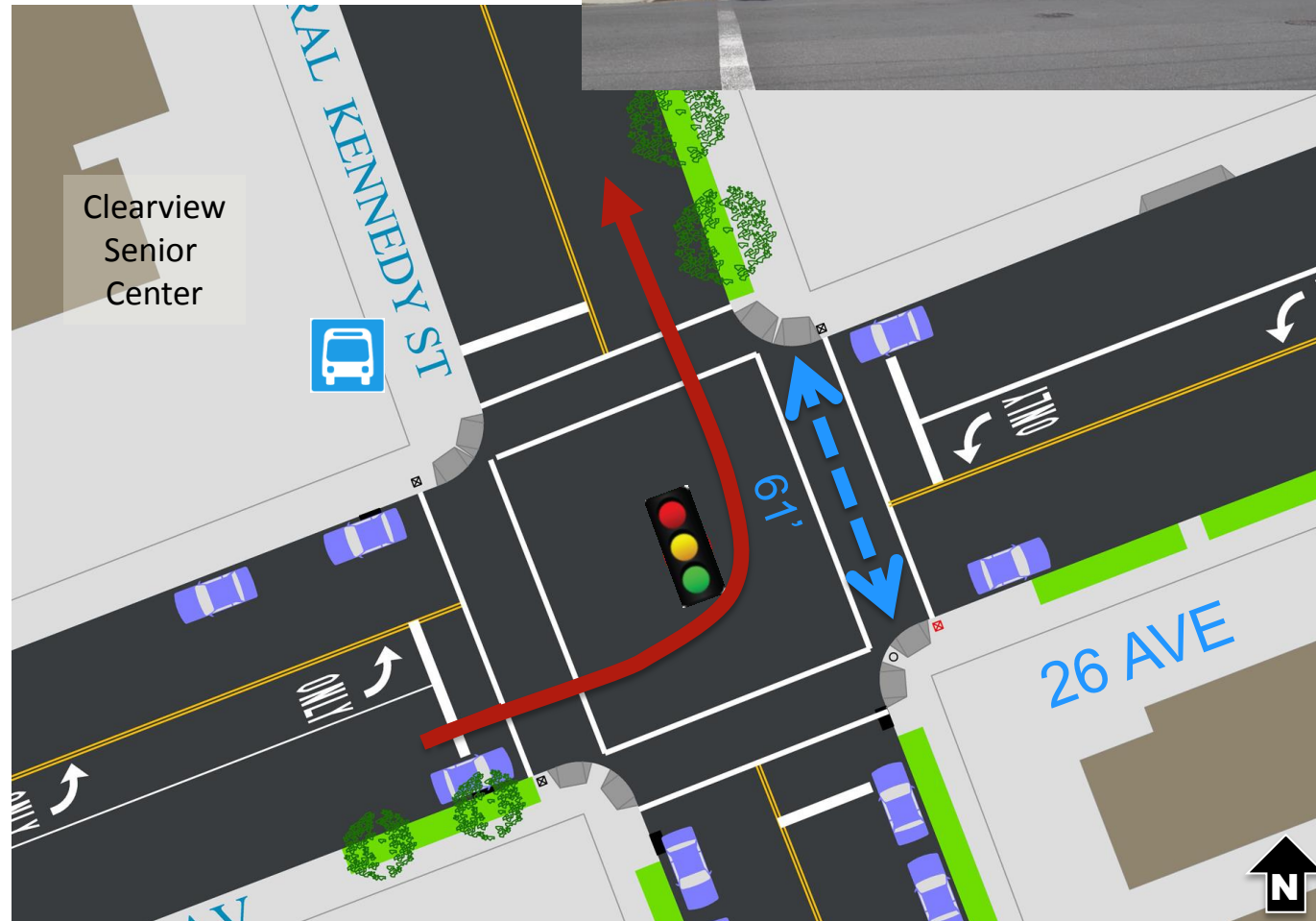


KSI (Killed or Severely Injured) location Focus Intersections

EXISTING CONDITIONS

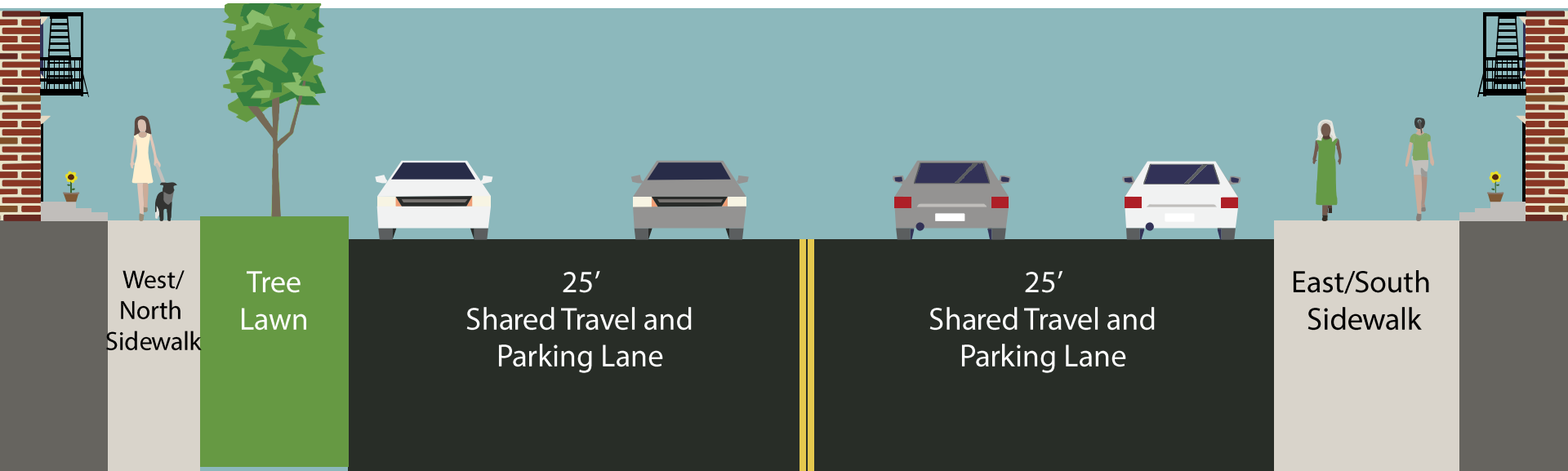
26 Ave at Corp Kennedy St

- Long pedestrian crossing distances
- 1 pedestrian KSI caused by left turning vehicle
- Existing leading pedestrian interval crossing 26 Av



EXISTING CONDITIONS

Corporal Kennedy St / 23 Av Corridor



Wide two-way roadway with one moving lane and parking lane in each direction

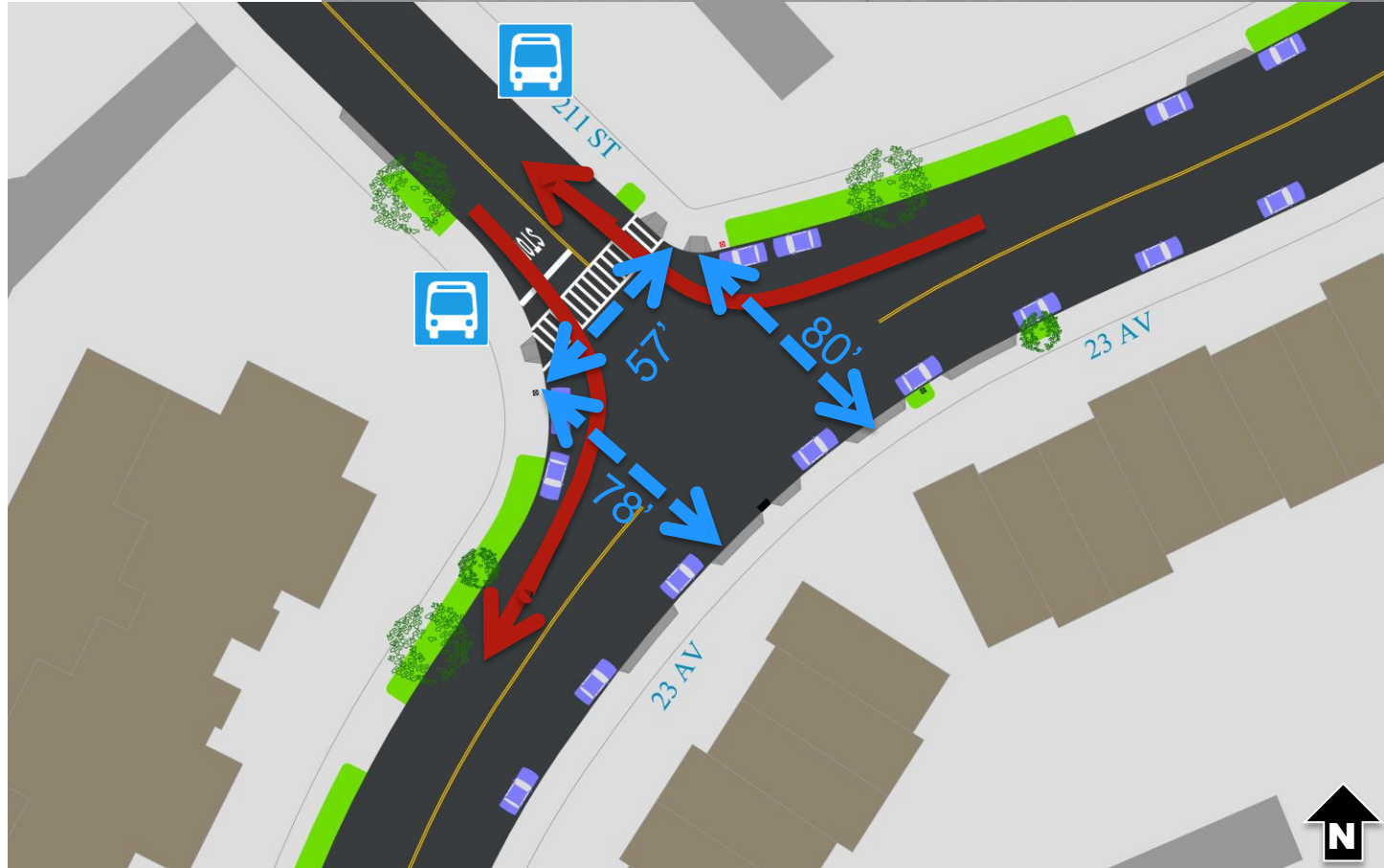
EXISTING CONDITIONS

211 St / 23 Ave



- Long crossing distances and a lack of protected crossings create difficulties for pedestrians

- Wide roadbed and soft turns promote high speeds



TOOLKIT



- Concrete islands
- Curb extensions
- High visibility crosswalks
- Parking lane markings
- Signs
- Enhanced crossings



ENHANCED CROSSING TREATMENTS

Americans with Disabilities
Act (ADA) Compliant
Pedestrian Ramps



Neckdowns



Pedestrian Warning Signs



W11-2



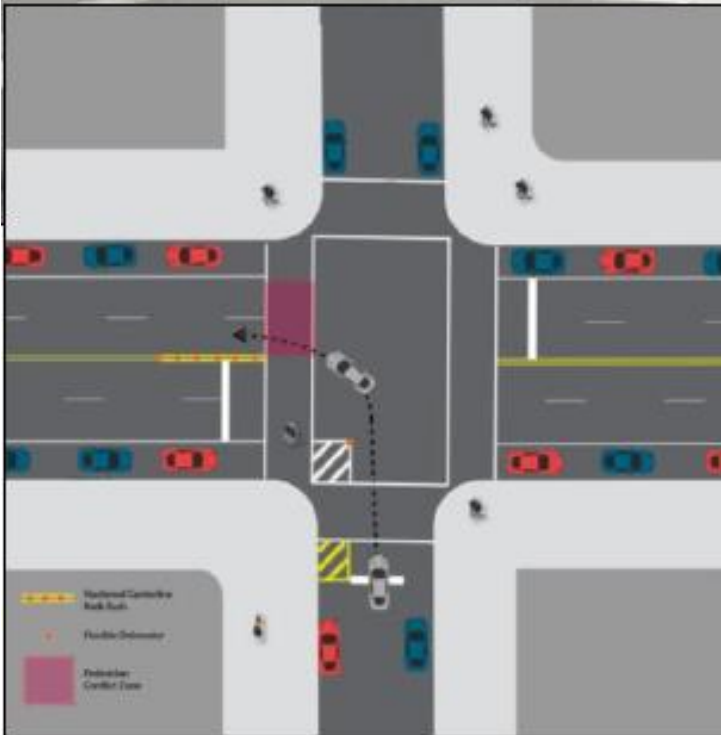
W16-7P

Concrete
refuge
islands



LEFT TURN TRAFFIC CALMING

- Hardened centerline to calm left turn movements via Qwick Kurb
- Statistically shown to slow turns



PROPOSAL

26 Ave at Corp Kennedy St

- Construct two concrete curb extensions on NE and SW corners to shorten 26 Ave crossing distances by 6'
- Upgrade all crosswalks to high visibility to improve pedestrian visibility
- Install hardened centerline on Corp Kennedy St for northbound left turns

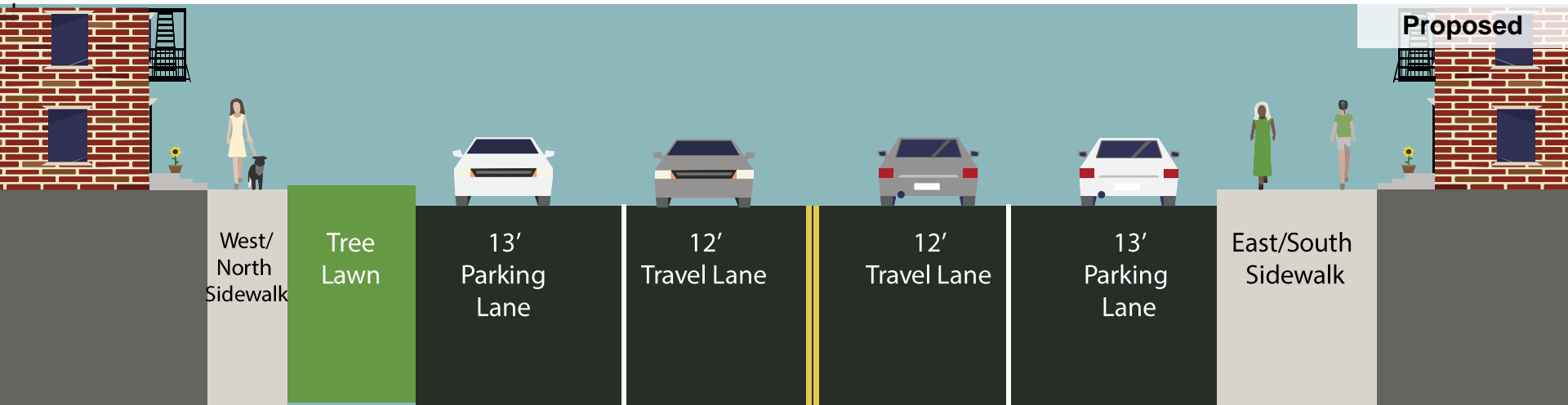
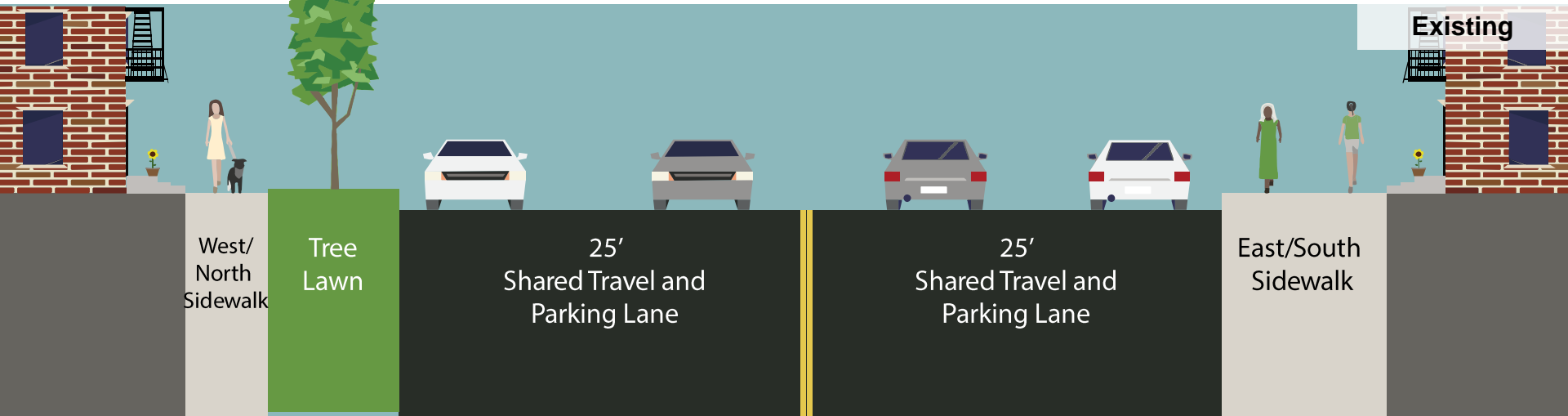


Broadway and 41 Ave, Queens



PROPOSAL

Corporal Kennedy St/23 Av Corridor

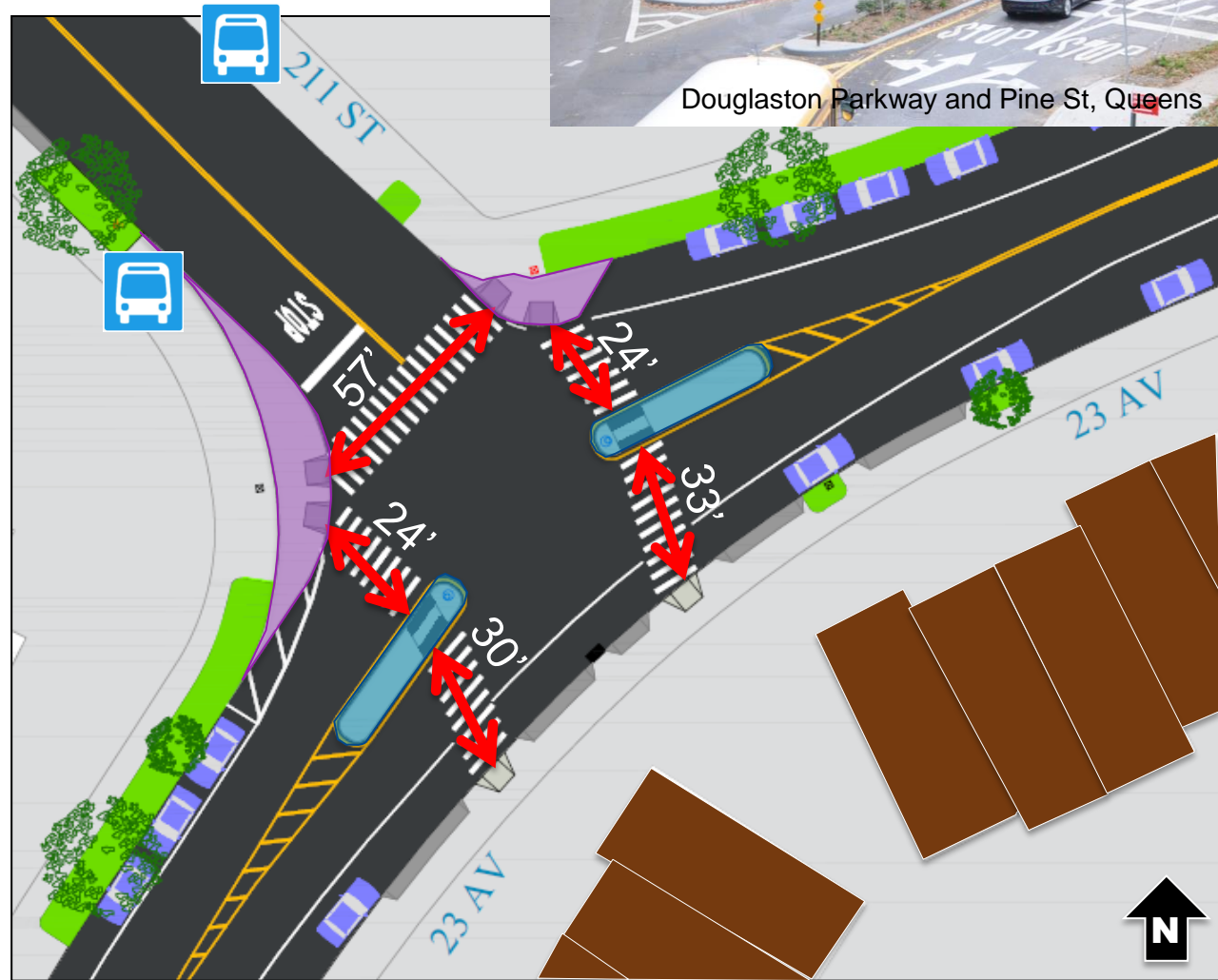


Traffic calmed travel lanes
Clearly marked parking lanes

PROPOSAL

211 St / 23 Ave

- Construct two concrete curb extensions on NW and NE corners to shorten crossing distances and slow turning movement speeds
- Build two concrete refuge islands with enhanced crossings on 23 Ave to provide two part crossings and improve pedestrian visibility



BENEFITS



1. Shortens pedestrian crossing distances
2. Makes crosswalks more visible to motorists
3. Adds new pedestrian space
4. Reduces speeding and calms traffic



SUMMARY

- 26 Ave and Corporal Kennedy Street
 - Concrete curb extensions on northeast and southwest corners into 26th Ave
 - High visibility crosswalks
- 211 St and 23 Ave
 - Concrete curb extensions on north side of 23 Ave
 - Concrete pedestrian refuge islands on 23 Ave
 - Enhanced Crossings on 23 Ave
- Corporal Kennedy St and 23 Ave between 26 Ave and Bell Blvd
 - Wide parking lanes

THANK YOU!

Questions?



NYC DOT



NYC DOT



nyc_dot



NYC DOT