



Cooper Ave, 80th Ave to 64th Pl

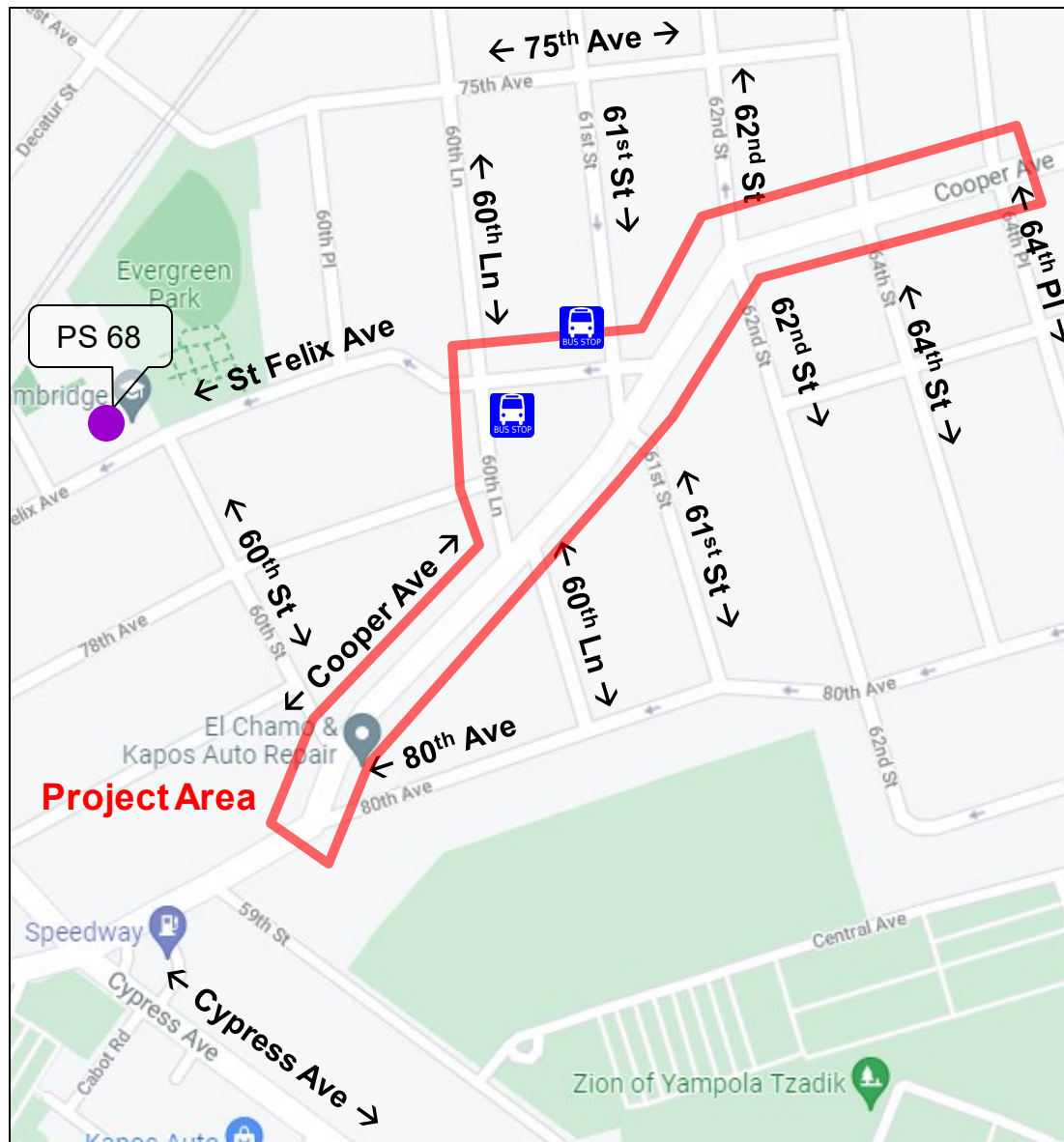
School Safety Improvements

Presentation for Queens CB 5 | May 17, 2022

Cooper Ave, 80th Ave to 64th PI

Project Area

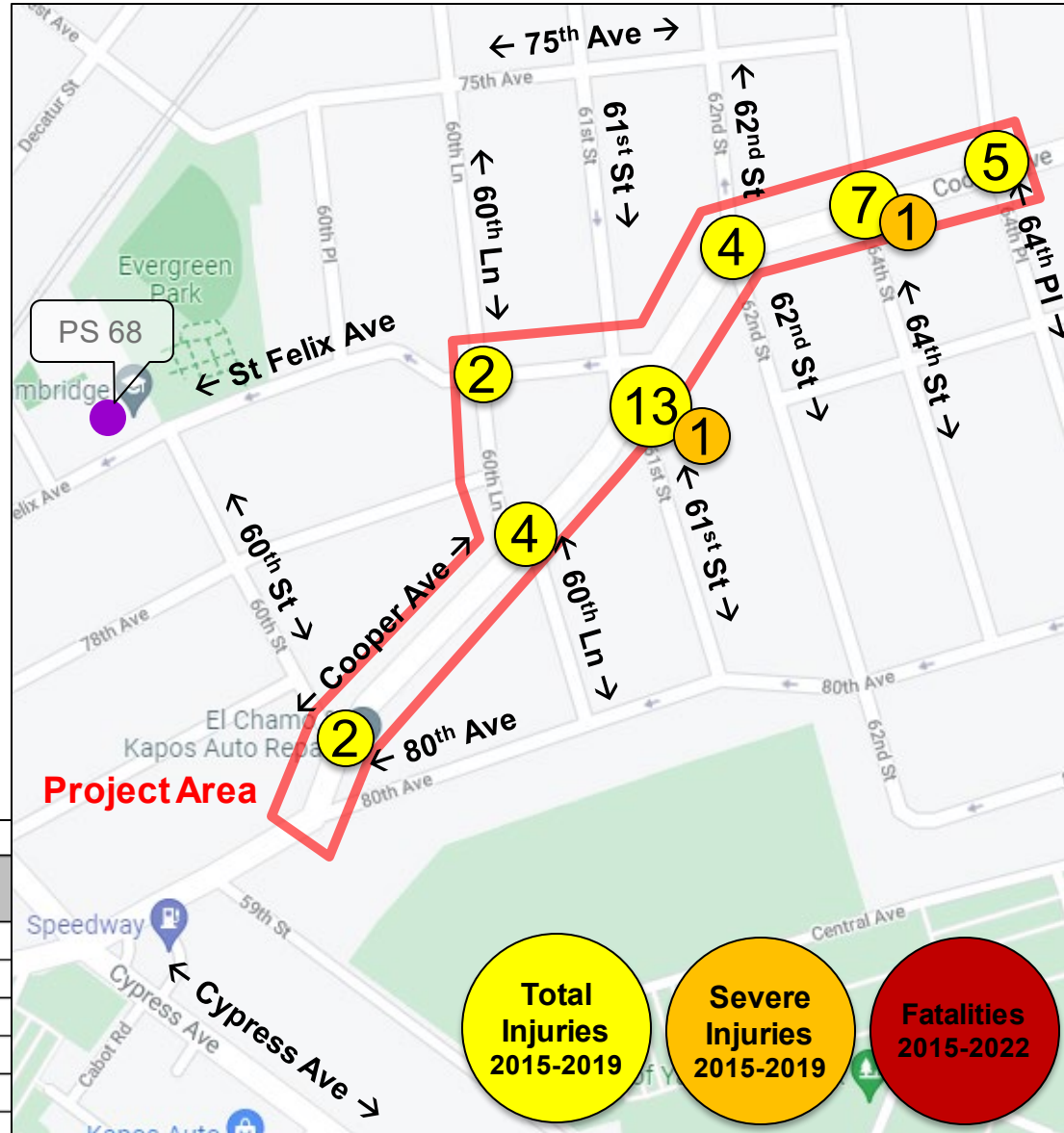
- B13 and Q39 bus routes
- Local Truck Route
- Many crossings by students at nearby PS 68
- Primarily residential with some commercial use
- DOT received requests from community for safety improvements
- DOT conducted walkthrough with Councilmember Holden, CB5 District Manager, and members of LPHOA in May 2021
- DOT presented proposal to LPHOA in December 2021



Cooper Ave, 80th Ave to 64th PI

Safety Data

- 6 pedestrian injuries from 2015-2019, spread out along the corridor
- 4.3 KSI/mile puts project area in middle third of Queens corridors



Injury Summary, 2015-2019 (5 Years)

Mode	Total Injuries	Severe Injuries	Fatalities	KSI
Pedestrian	6	0	0	0
Bicyclist	3	1	0	1
Motor Vehicle Occupant	28	1	0	1
Other Motorized	0	0	0	0
Total	37	2	0	2

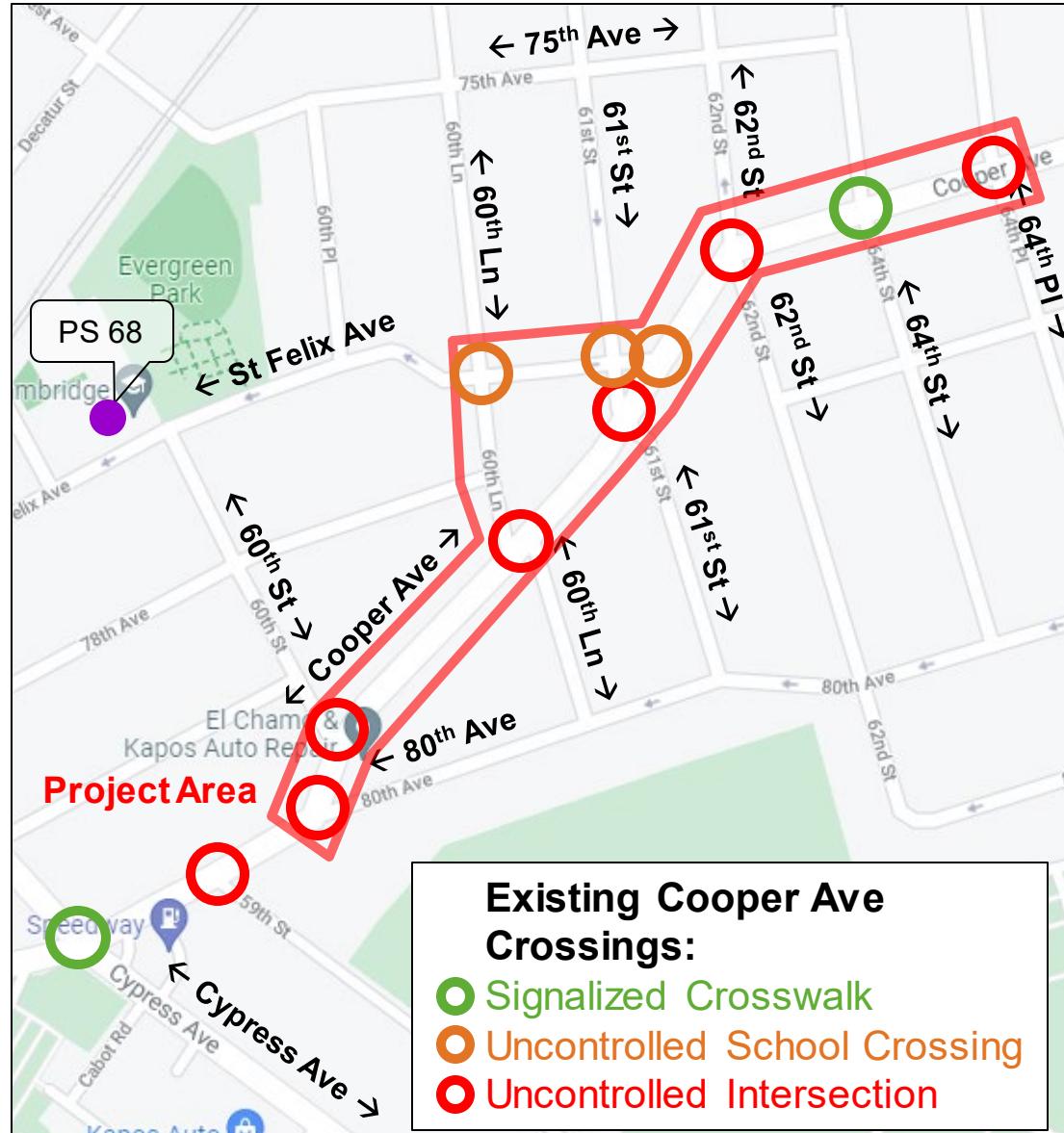
Source: Fatalities: NYCDOT, Injuries: NYSDOT KSI: Persons Killed or Severely Injured

Note: Map may not include total or severe injuries that occurred at midblock locations. Data is based off of NYSDOT/NYS DMV crash and injury data available as of March 2022.

Cooper Ave, 80th Ave to 64th Pl

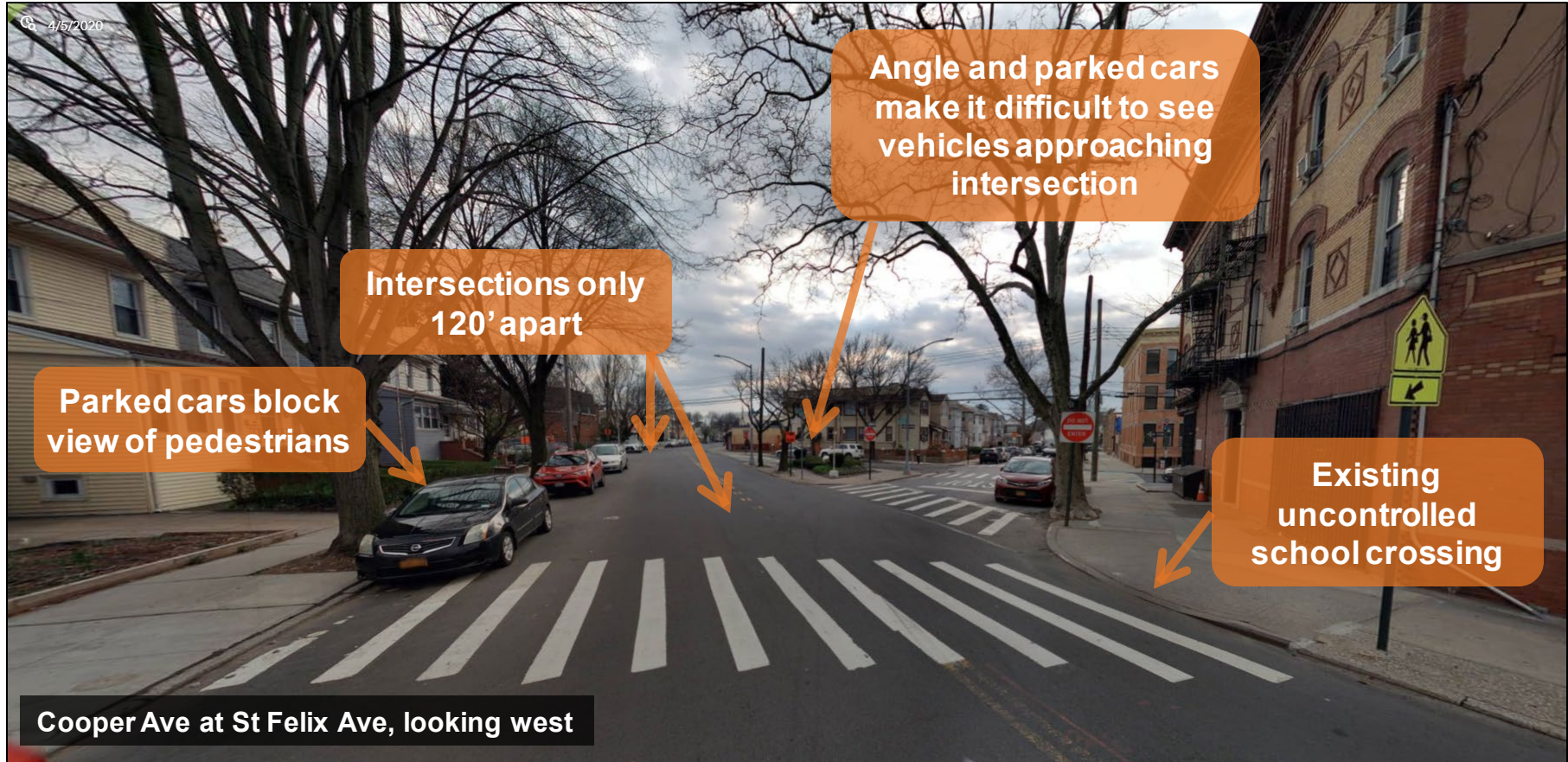
Existing Issues

- No controlled pedestrian crossings on Cooper Ave between Cypress Ave and 64th St
- Close intersections create confusing traffic patterns
- Speeding on Cooper Ave
- Angled intersections allow fast turns
- Visibility issues near 61st St



Cooper Ave, 80th Ave to 64th Pl

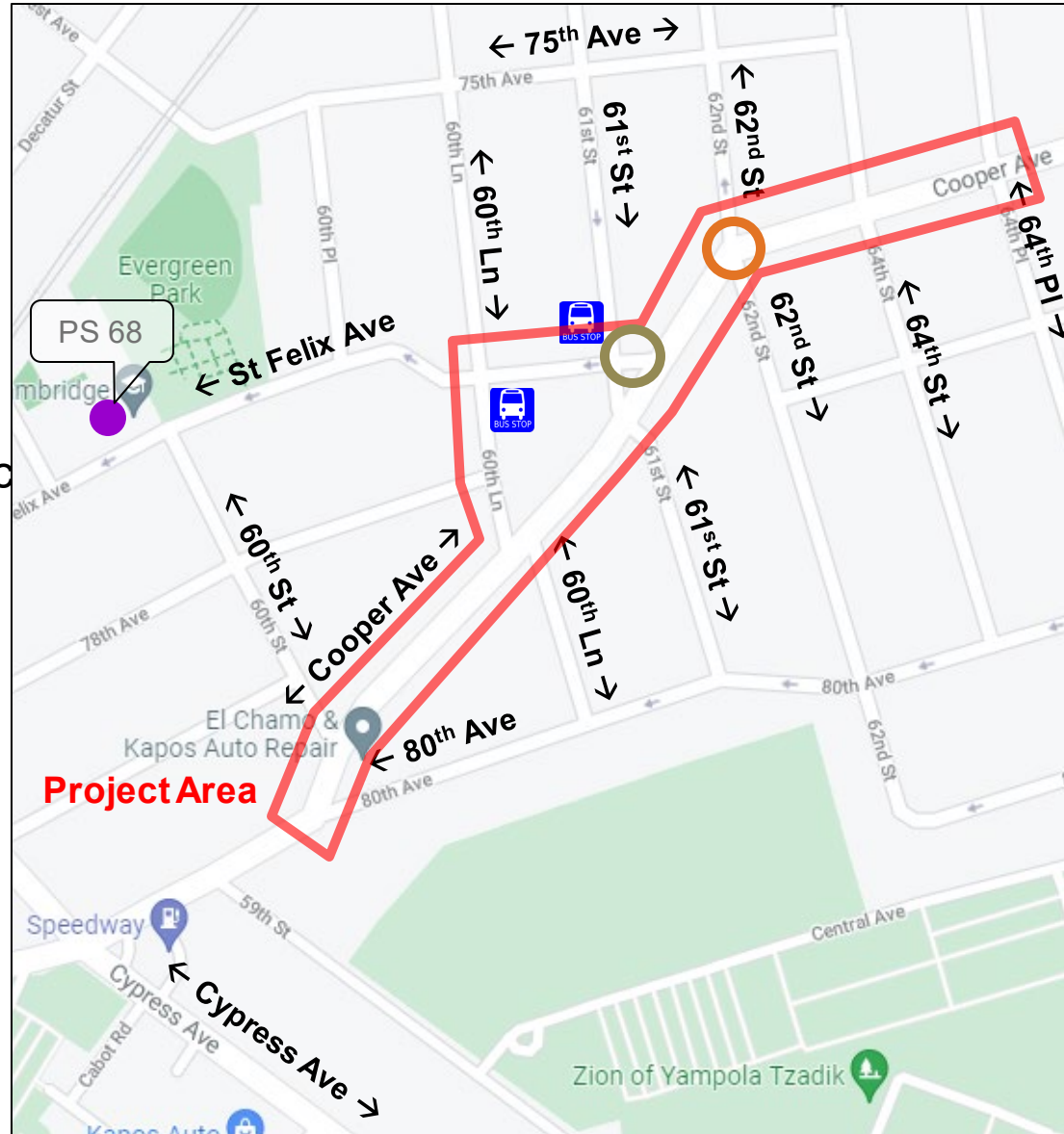
Existing Issues



Cooper Ave, 80th Ave to 64th PI

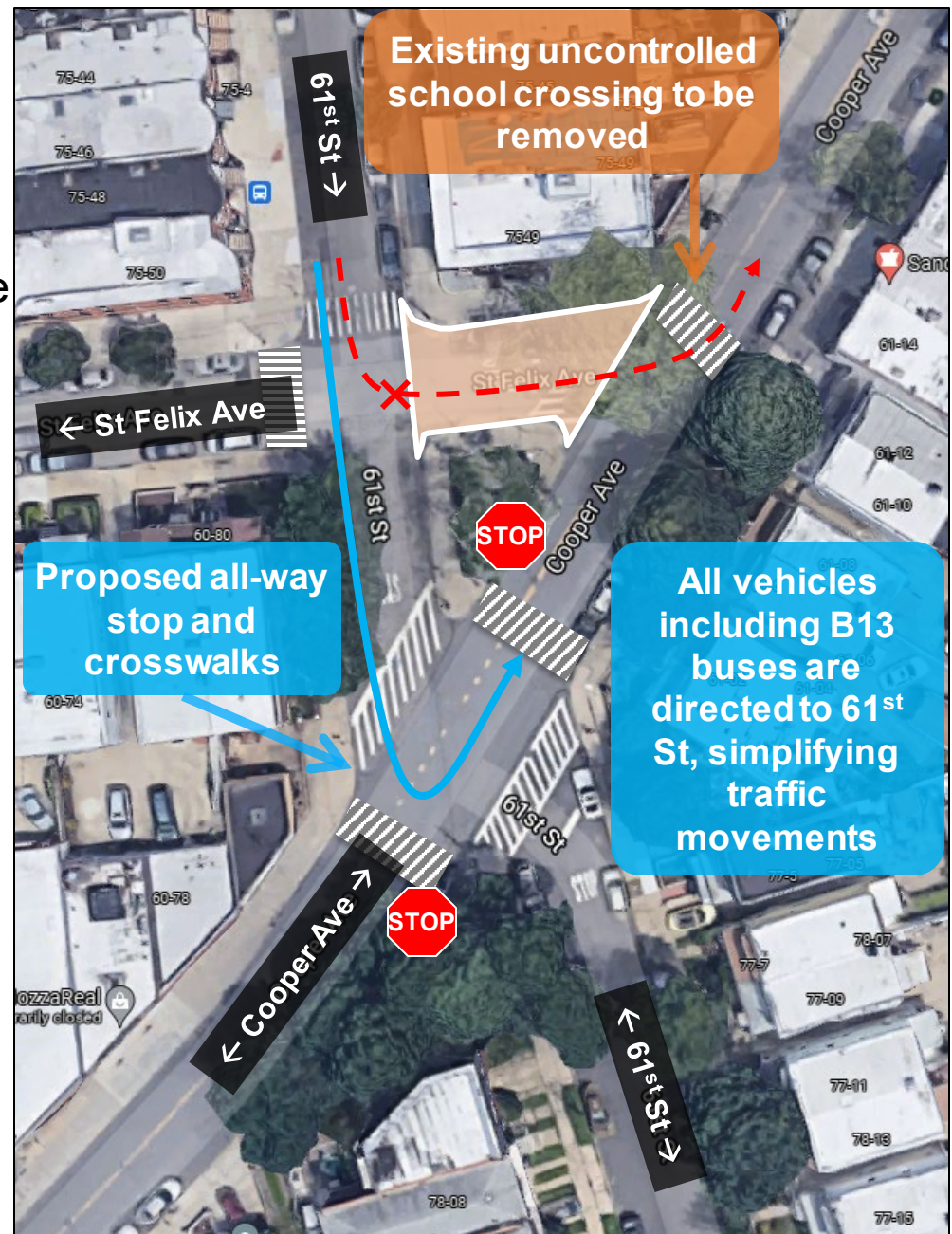
Proposal Overview

- Close slip lane to simplify intersections and provide pedestrian space at:
 - St Felix Ave between 61st St and Cooper Ave
- Investigate and install new traffic controls where feasible in the project area
- Install painted curb extension to calm vehicle turns and shorten crossing distance at:
 - Cooper Ave and 62nd St



Proposal: Slip Lane Closure

- DOT collected traffic data to ensure feasibility of closing slip lane on St Felix Ave between 61st St and Cooper Ave
- Removal of slip lane creates fewer conflicts between pedestrians and vehicles
- Slip lane closure provides additional pedestrian space



Cooper Ave, 80th Ave to 64th Pl

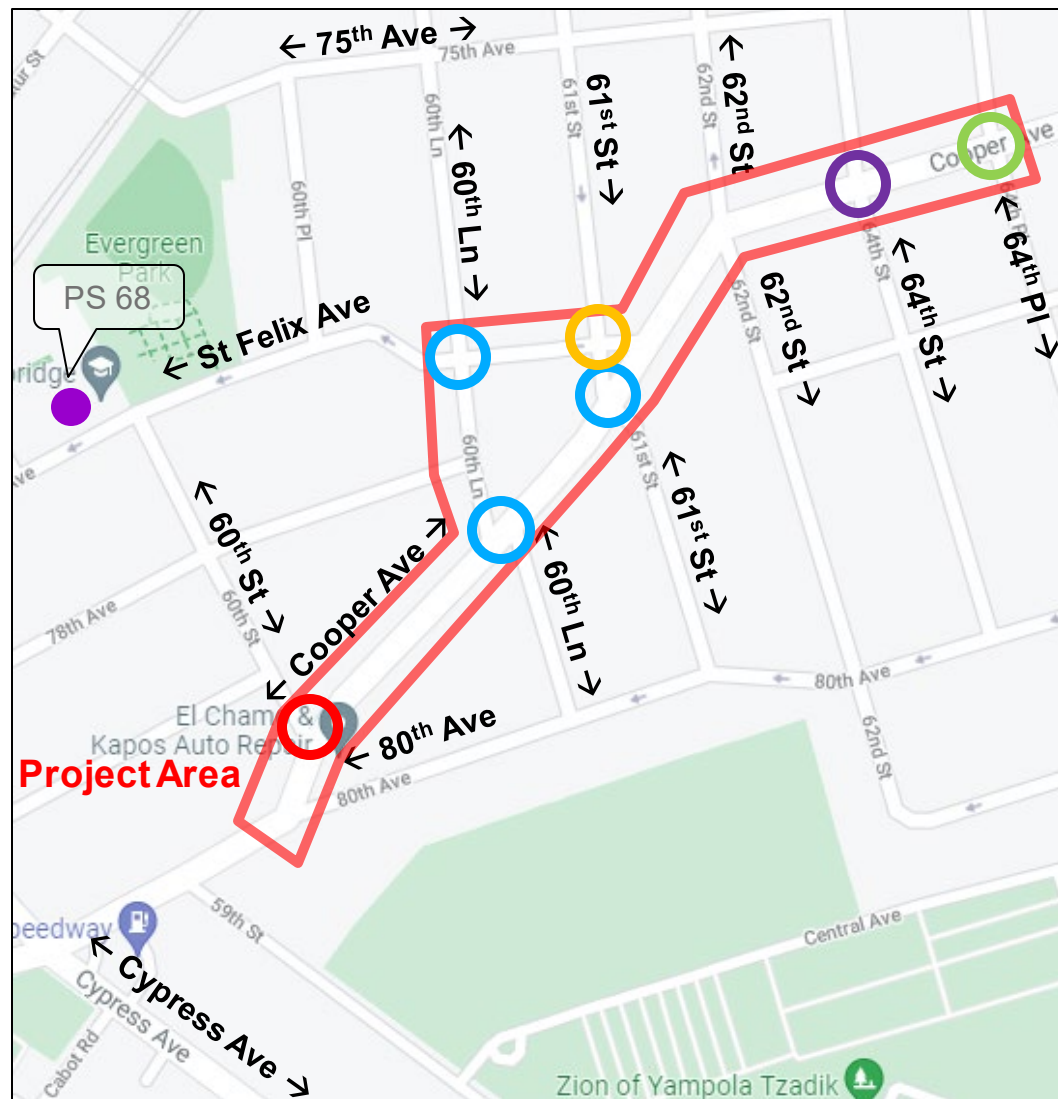
Proposal: Slip Lane Closure on St Felix Ave from 61st St to Cooper Ave



Cooper Ave, 80th Ave to 64th PI

Proposal: New Intersection Controls

- New traffic signal approved at:
 - Cooper Ave and 64th PI
- New LPI approved at:
 - Cooper Ave and 64th St
- New all-way stop controls approved at:
 - Cooper Ave and 60th Ln
 - Cooper Ave and 61st St
 - St Felix Ave and 60th Ln
- New intersection control pending study at:
 - St Felix Ave and 61st St
- New intersection controls denied at:
 - Cooper Ave and 60th St



Cooper Ave, 80th Ave to 64th Pl

Proposal: Painted Curb Extension

- Painted curb extension slows vehicles turning off of Cooper Ave and shortens pedestrian crossing distance



Cooper Ave, 80th Ave to 64th Pl

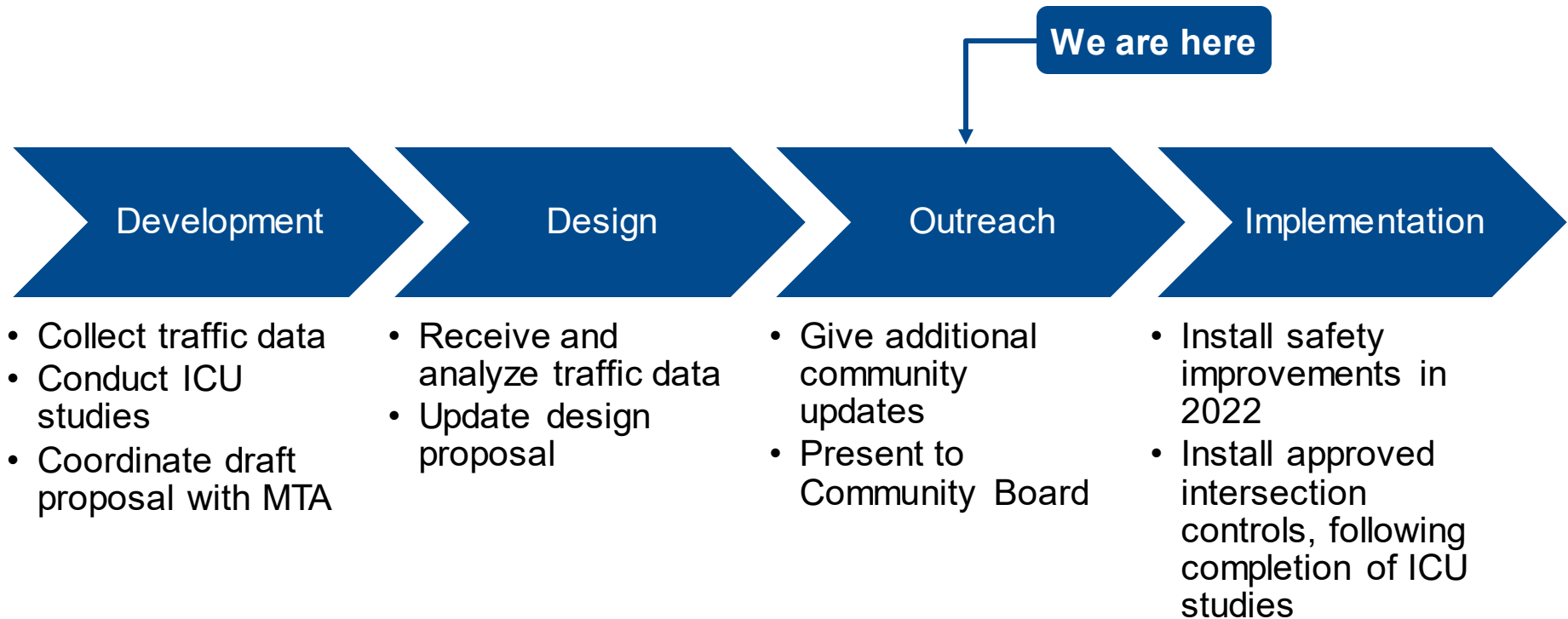
Proposed Parking Impact

12 parking spaces repurposed for safety improvements including slip lane closure, painted curb extension, and increased pedestrian visibility



Cooper Ave, 80th Ave to 64th Pl

Project Status



Thank You!

Questions?



Contact: NYCDOT Queens Borough Commissioner's Office – (212) 839-2510



NYCDOT



nyc_dot



nyc_dot



NYCDOT