



Broadway Vision Update

CB 5 Transportation Committee

Aug 22, 2022

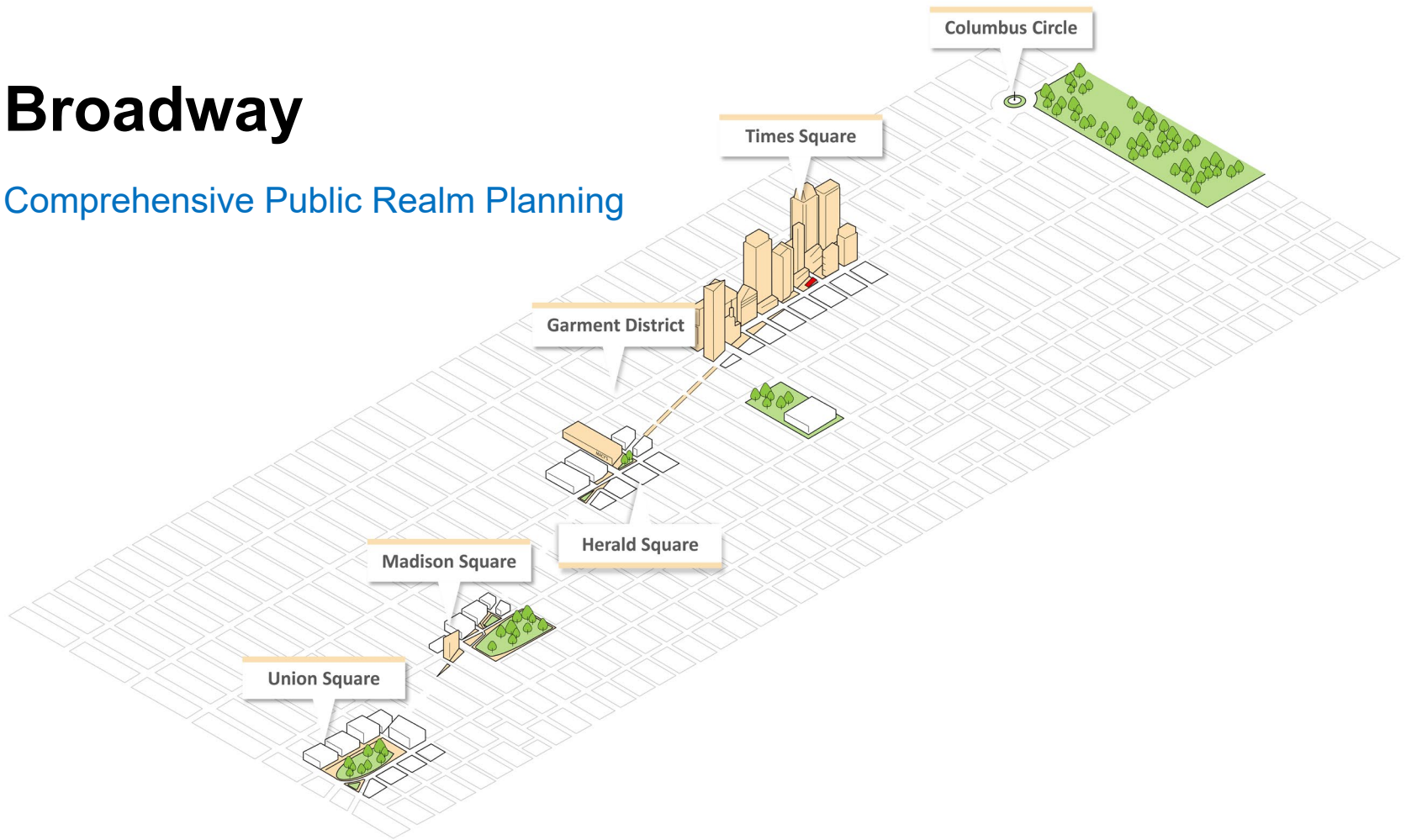


The Corridor



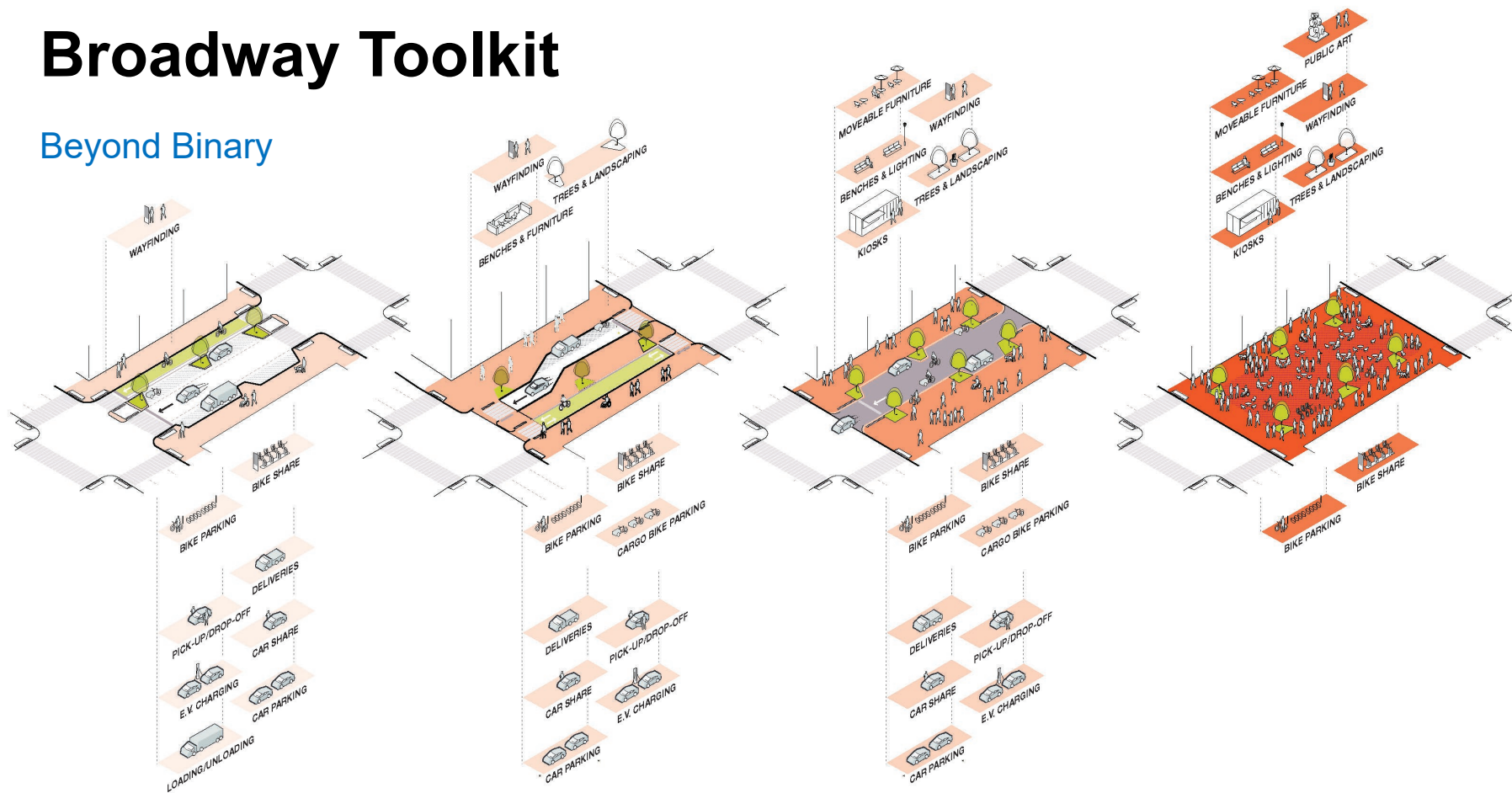
Broadway

Comprehensive Public Realm Planning



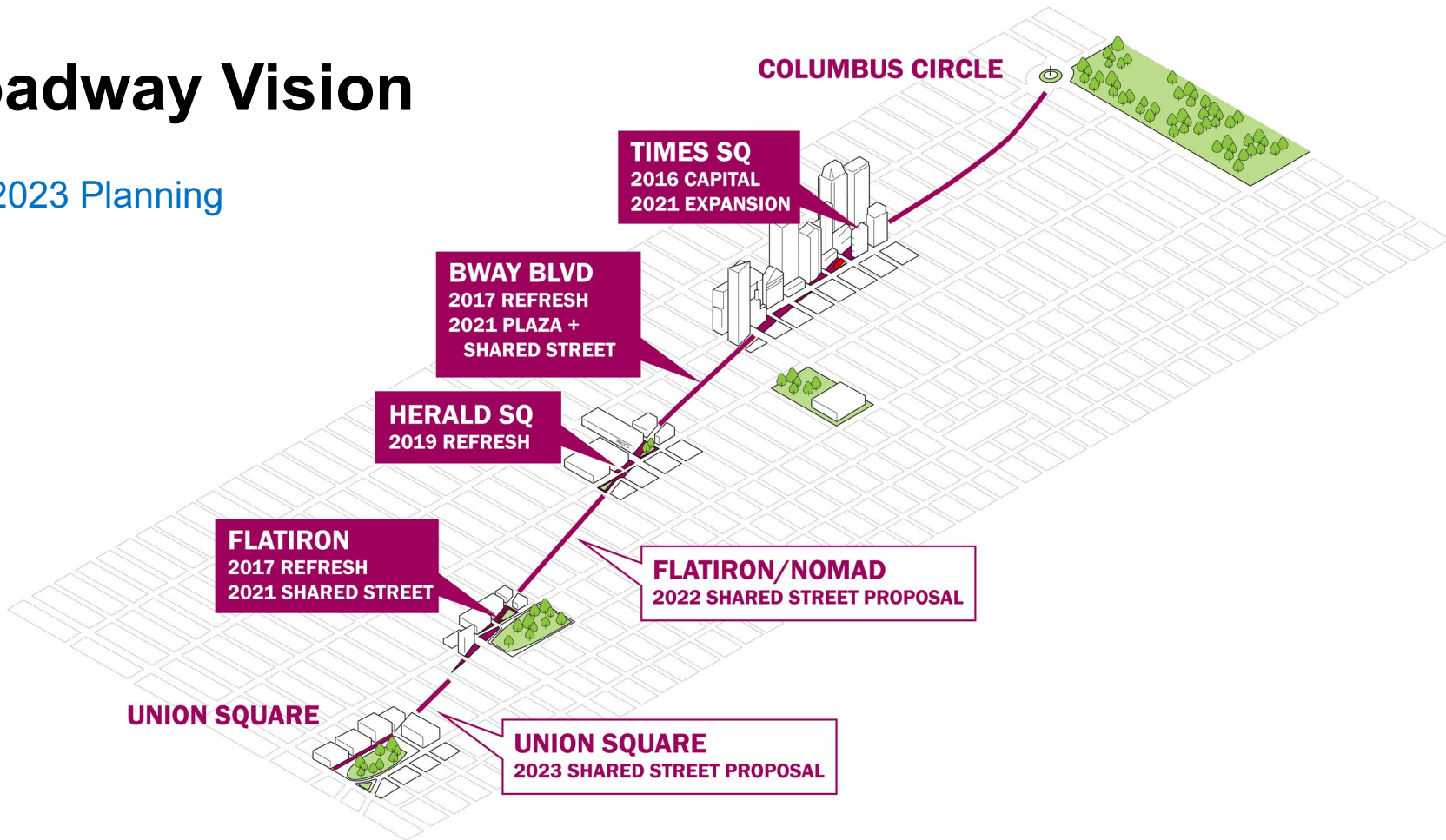
Broadway Toolkit

Beyond Binary



Broadway Vision

2022-2023 Planning



2021 Flatiron

21st – 23rd Shared Streets



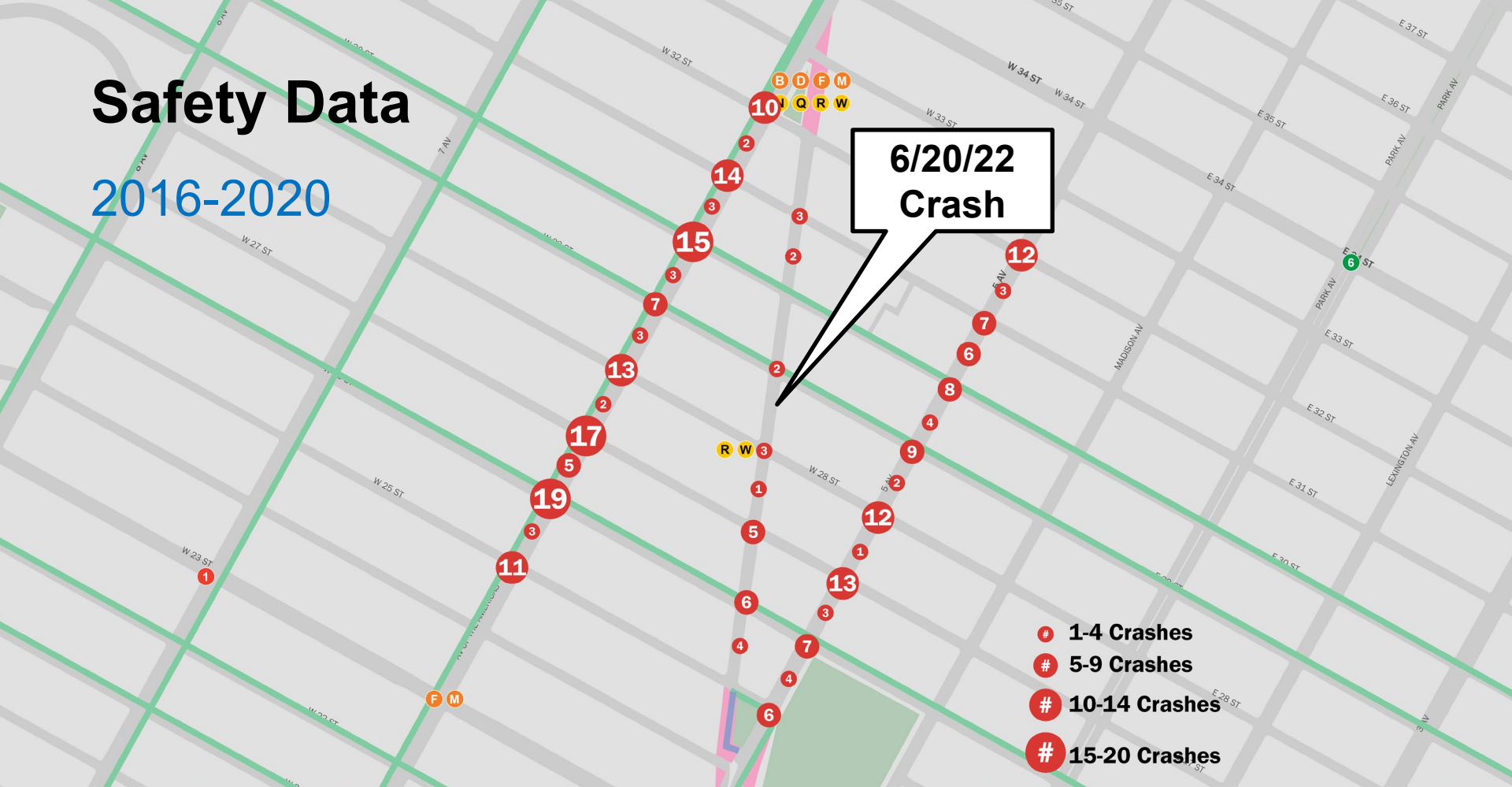
2022 Flatiron

25th – 27th NoMad Piazza



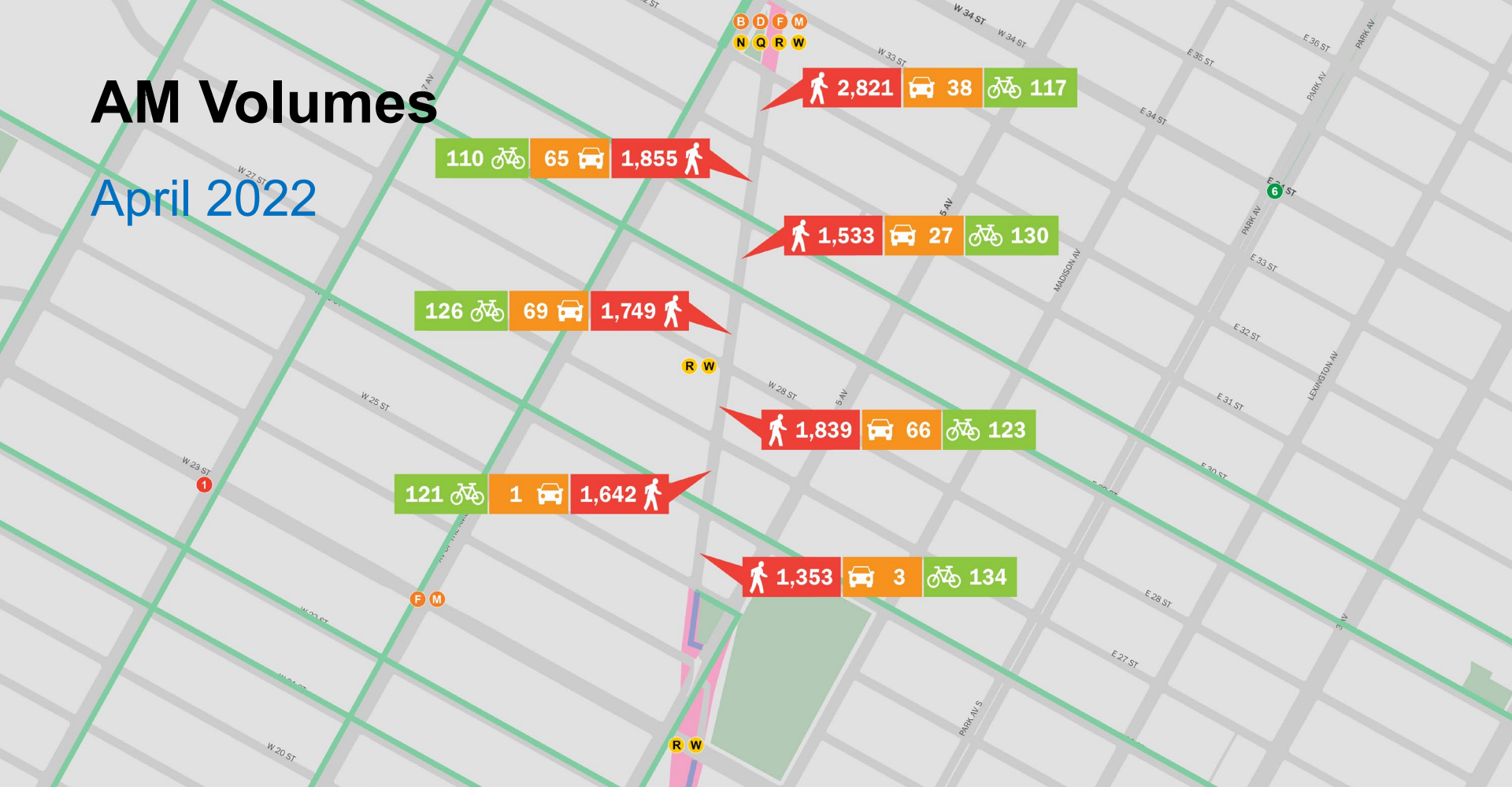
Safety Data

2016-2020



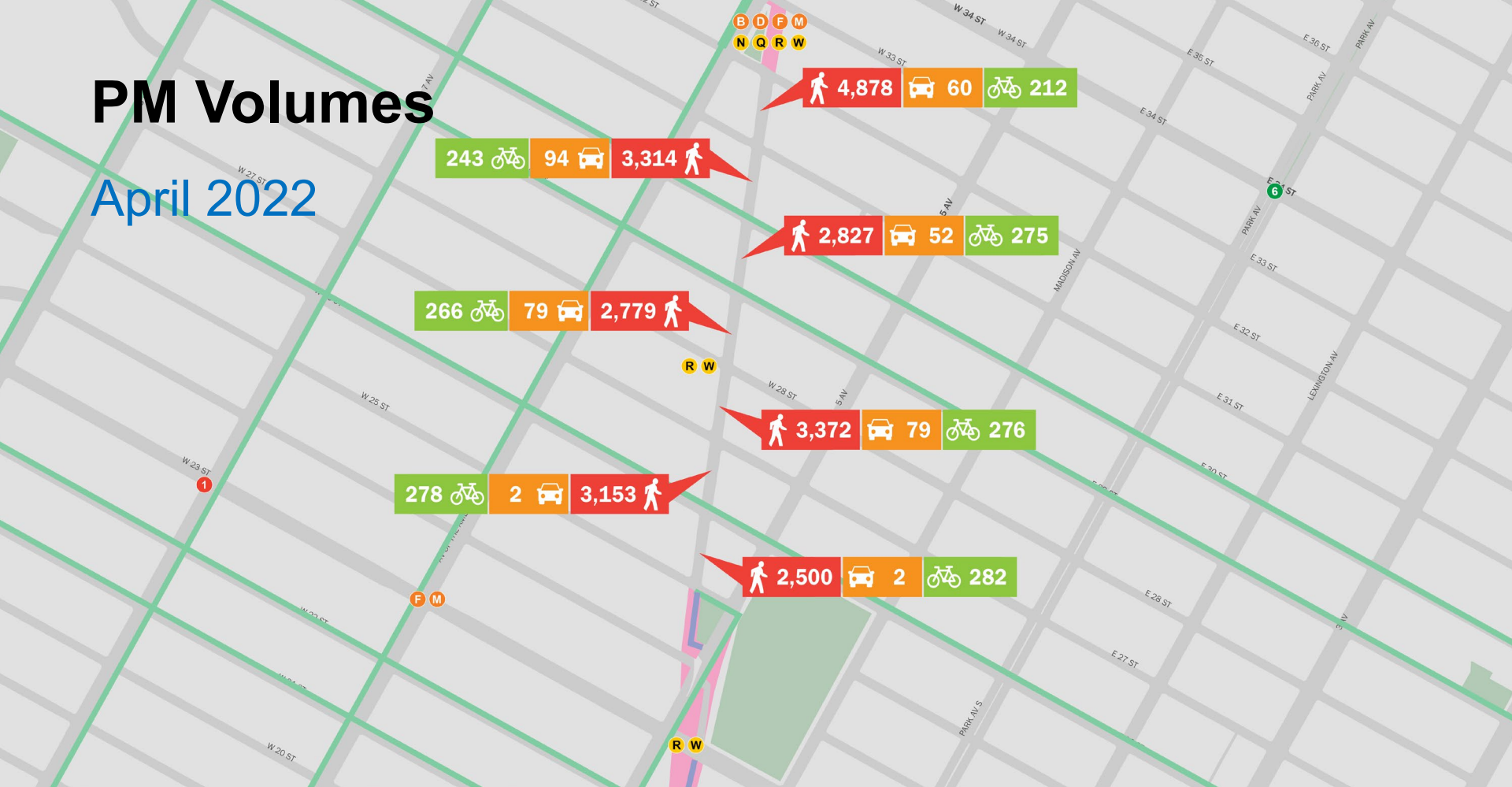
AM Volumes

April 2022



PM Volumes

April 2022



Flatiron, 25th to 32nd Streets

2

Public Engagement

Public Sessions on Broadway btwn 25th & 26th

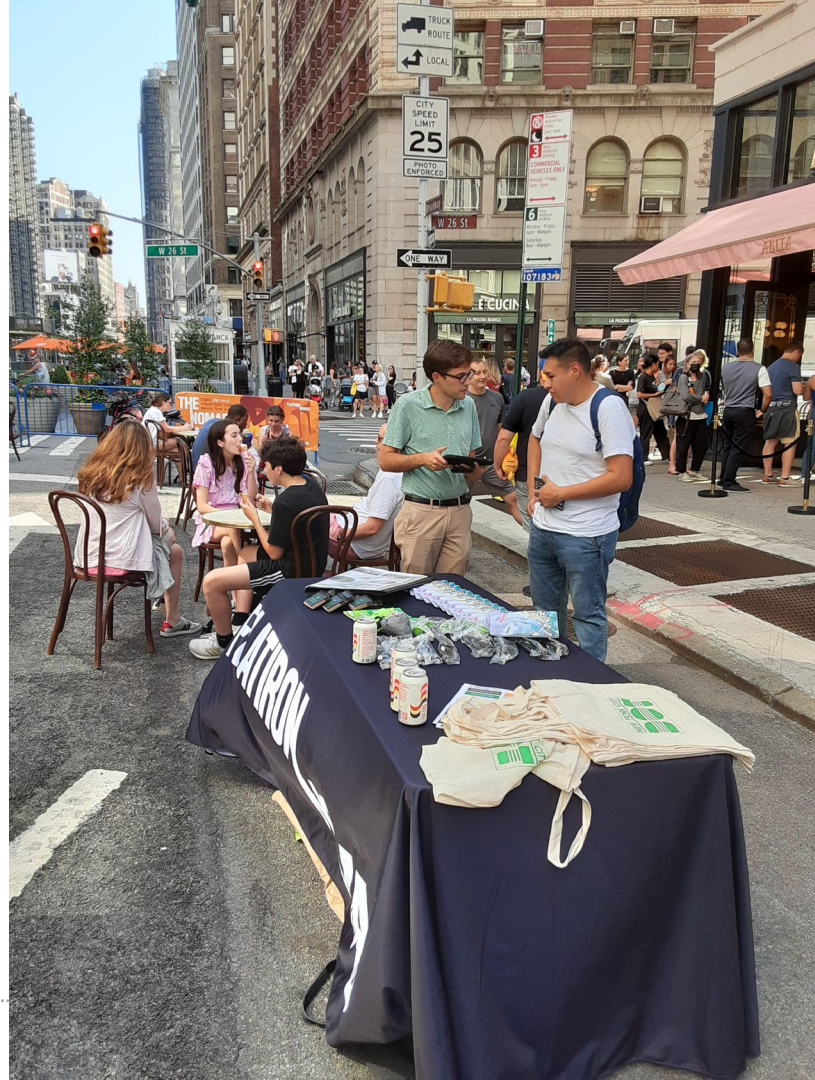
- Friday, 6/24, 4-6pm
- Tuesday, 6/28, noon-2pm

DOT Public Survey

- Open from June 24th through August 12th

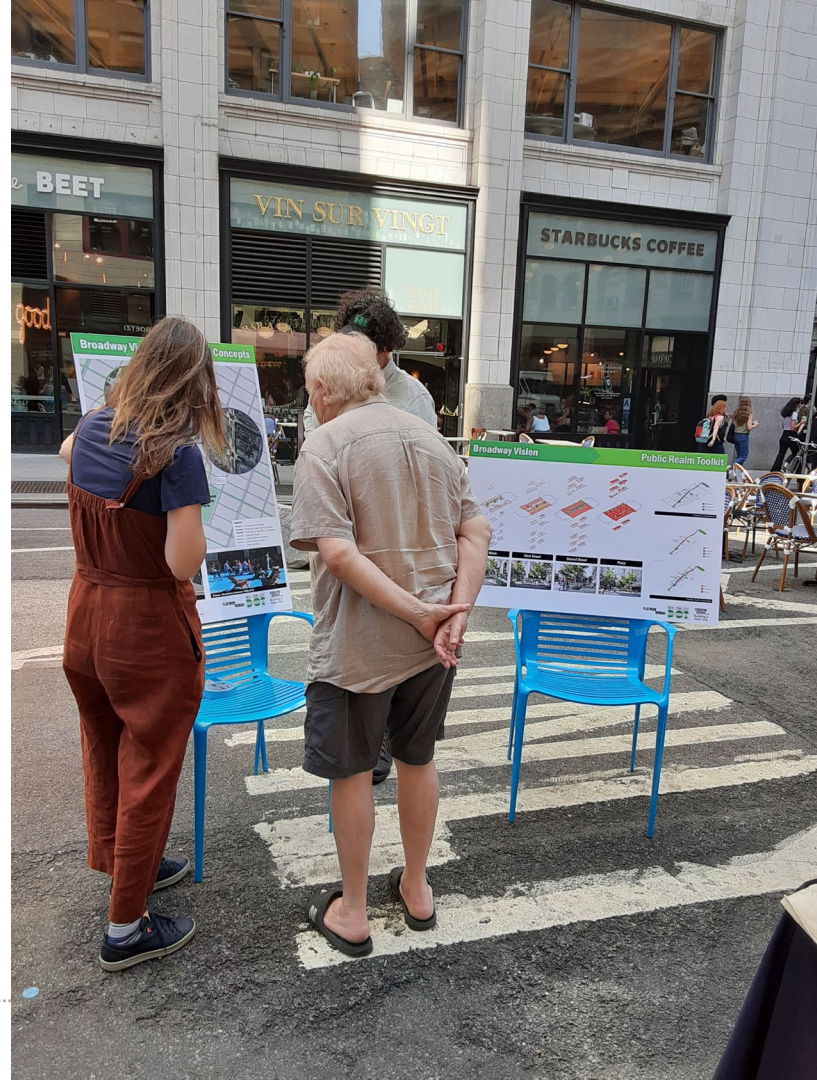
Flatiron NoMad Partnership Surveys

- Fall 2021 Survey: 9/29/21 - 12/12/21
- Spring 2022 Survey: 4/11/22 – 7/8/22



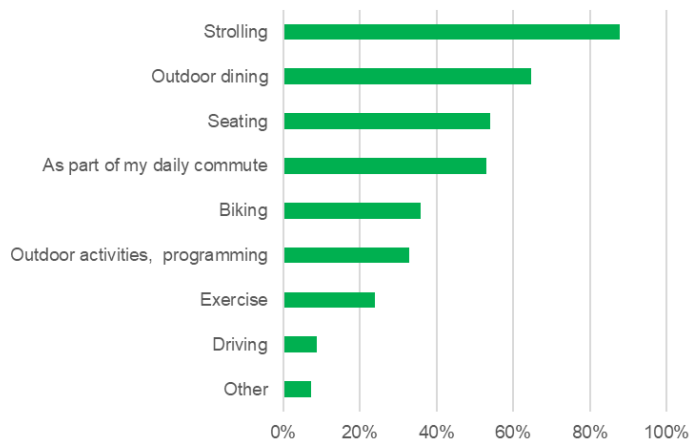
Public Survey Results

- **204** survey responses (as of 8/3)
- **67%** use the corridor everyday or several times a week
- **66%** route themselves through the NoMad Pop Up Plaza when passing through the area
- **37%** bike or scooter when on the corridor
- **42%** of cyclists do not feel safe from traffic
- Over **50%** of pedestrians think sidewalks are too crowded

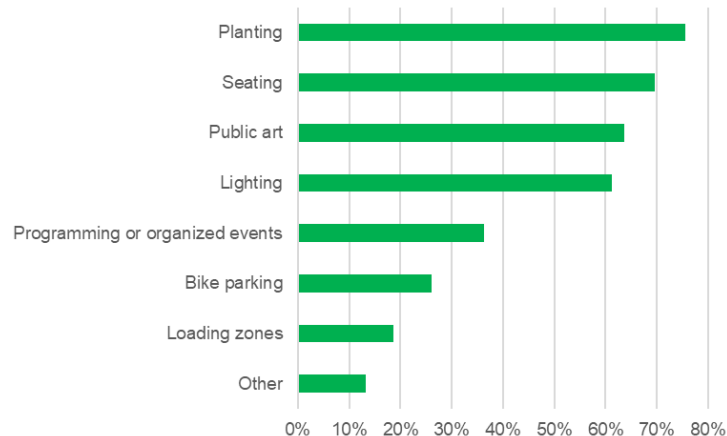


Public Survey Results

How do you want to use Broadway between 25th-32nd in the future?



What types of public realm amenities or traffic calming elements would you like to see between 25th-32nd?



Flatiron NoMad Surveys

Fall '21 survey: 321 responses

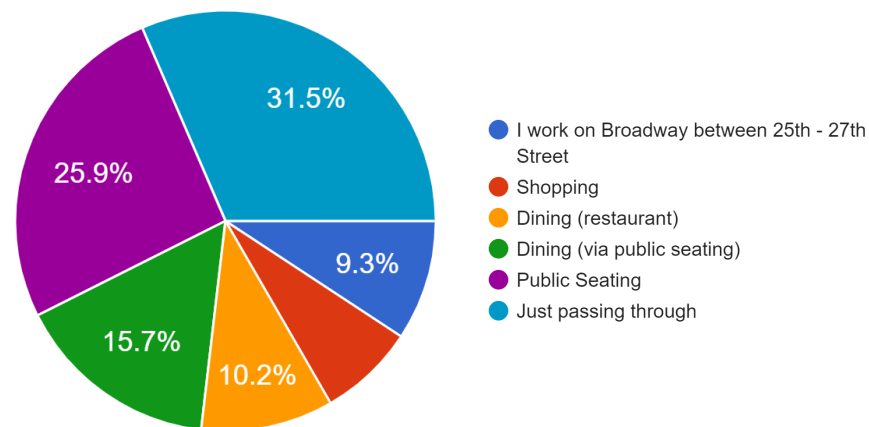
- **89%** loved the Piazza and wanted to make it permanent

Spring '22 survey: 108 responses

- **100%** wanted to make the Piazza permanent
- **94.3%** feel as safe or safer since the Piazza was installed

What brought you to NoMad Piazza Pop-Up today?

108 responses



Source: Flatiron NoMad Partnership

Corridor Proposal

Broadway, 25th to 32nd Streets

Project Goals

- Prioritize Pedestrians and Cyclists
- Maintain Necessary Vehicular Access
- Create Additional Public Space
- Formalize Two-Way Bike Connection

DRAFT Design, details still in development



Phase 1 Proposal

Broadway, 25th to 26th Streets

Plaza Block

- Additional Public Space
- Two-Way Bike Connection
- Calm Bike Traffic
- Support Outdoor Dining



Phase 1 Proposal

Broadway, 26th to 27th Streets

Plaza Block

- Additional Public Space
- Two-Way Bike Connection
- Calm Bike Traffic
- Support Outdoor Dining

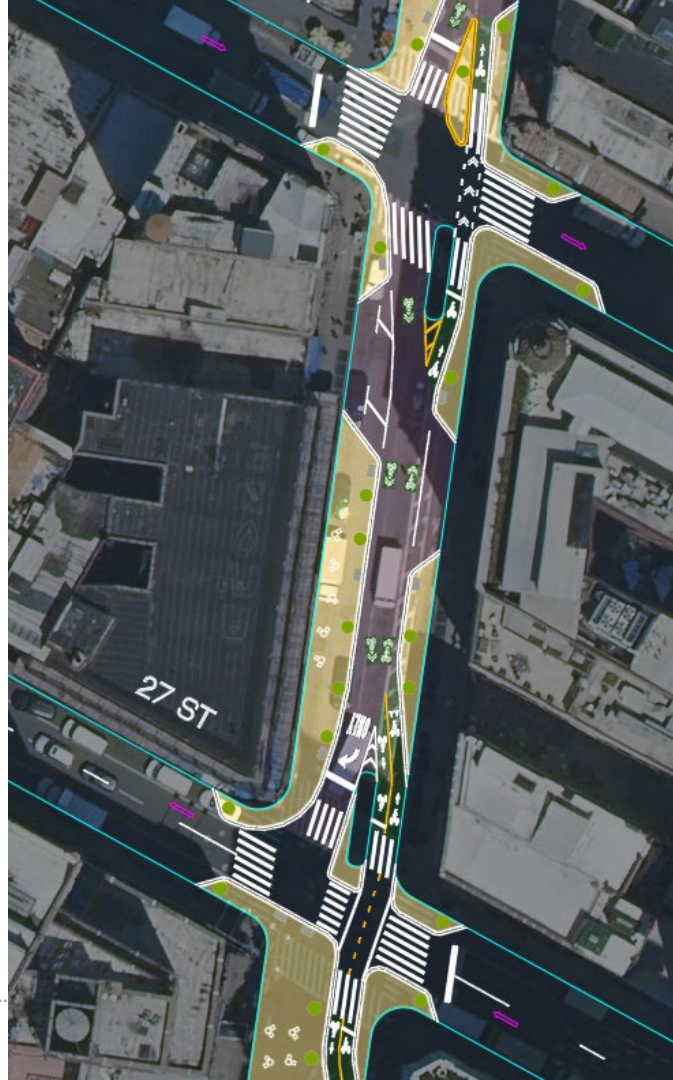


Phase 1 Proposal

Broadway, 27th to 28th Streets

Shared Block

- Additional Public Space
- Shortened Pedestrian Crossings
- Two-Way Bike Connection
- Encourage Social Cycling
- Curb Access for Loading



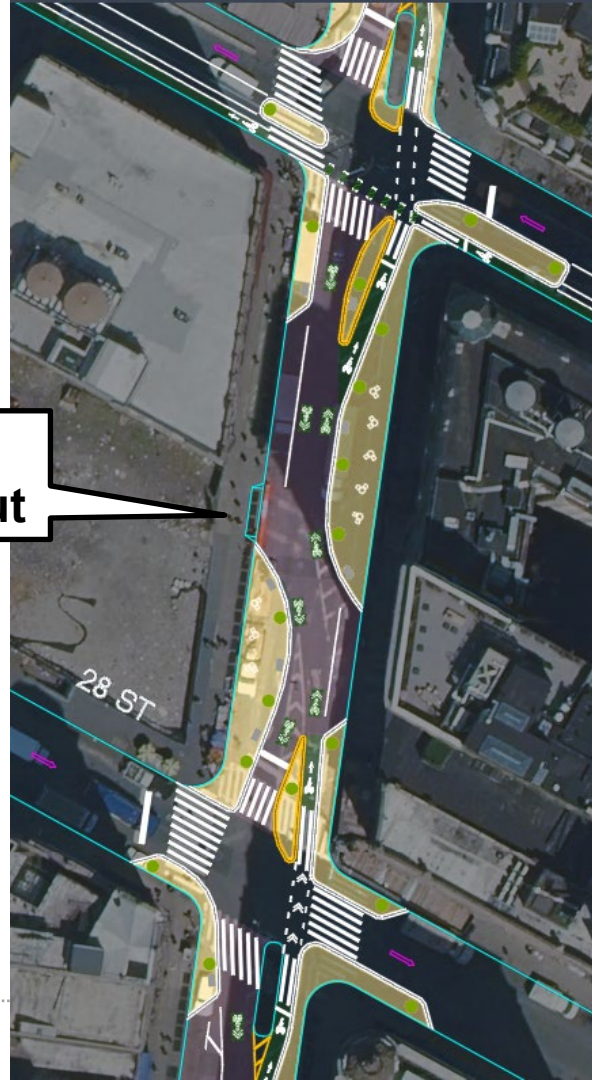
Phase 1 Proposal

Broadway, 28th to 29th Streets

Shared Block

- Additional Public Space
- Shortened Pedestrian Crossings
- Traffic Calming
- Two-Way Bike Connection
- Encourage Social Cycling
- Curb Access for Loading

**Hotel
Curb Cut**



Next Steps

3

Next Steps

Aug 22: Present to CB5 Transportation Committee

Fall: Phase 1 Implementation Start

Winter 2022-23: Ongoing Visioning for 2023 Broadway projects

Thank You!

Questions?



NYCDOT



nyc_dot



nyc_dot



NYCDOT