



BROADWAY SAFETY AND MOBILITY IMPROVEMENTS

Queens Community Board 4 Transportation Committee

April 16, 2019



AGENDA

- Bus Improvements
- Pedestrian Safety Improvements
- Big Jump Background

Bus Improvements

1

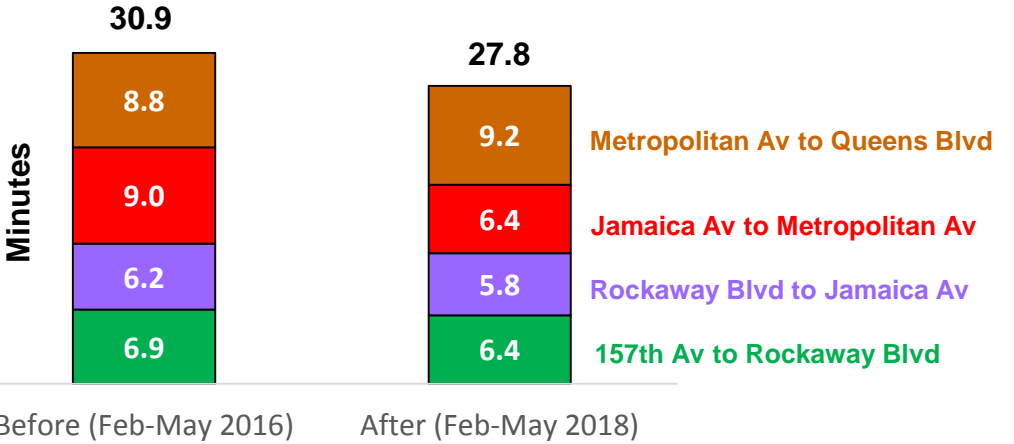
WOODHAVEN Q52/Q53 SBS

- Launched November 2017
- Bulk of on-street improvements in “middle” section

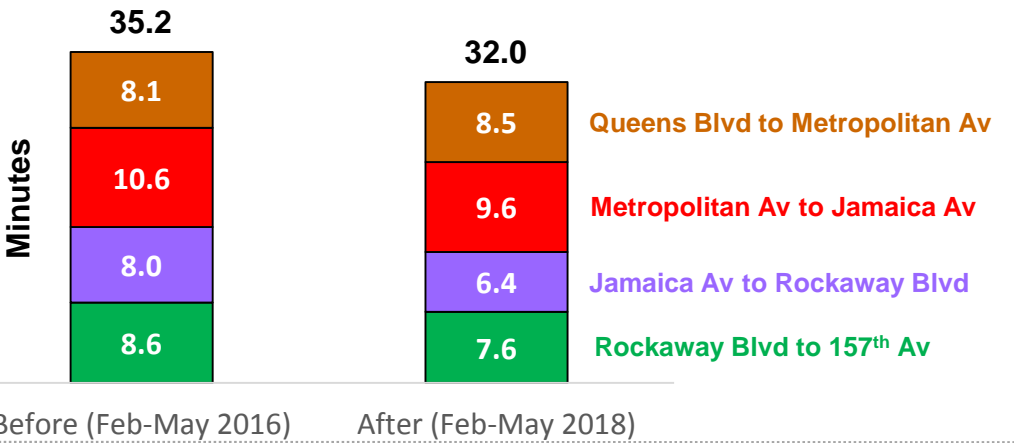


BUS TRAVEL TIMES

Northbound (7-10 AM)



Southbound (4-7 PM)

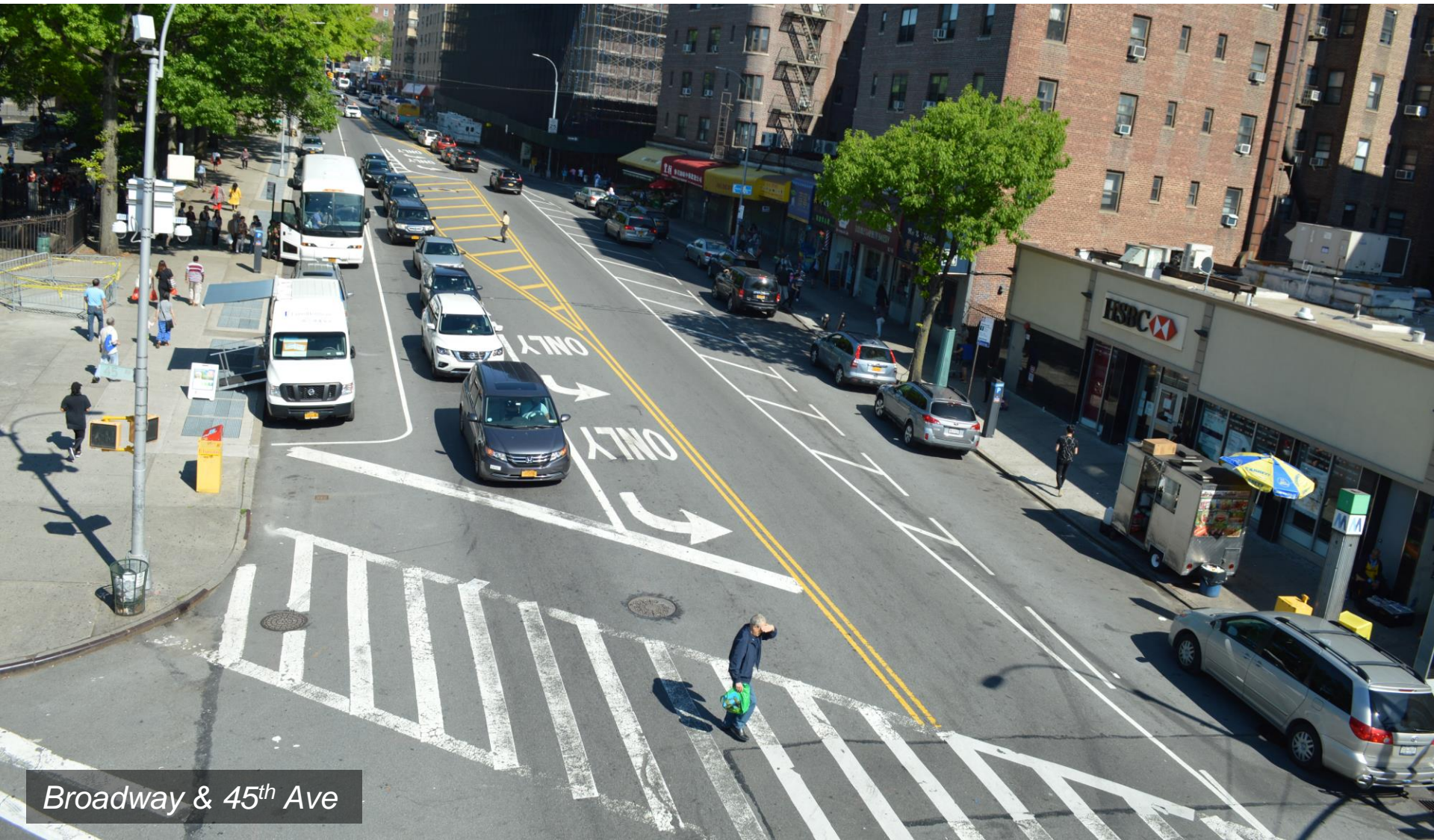


BROADWAY

- Remains the slowest portion of the Q53 route
- Includes 4 Q53 SBS stop pairs + Q58 service
- 17,000 daily trips on Broadway buses (Q53 + Q58)



CONGESTION ISSUES



Broadway & 45th Ave

CONGESTION ISSUES



Broadway & Whitney Ave

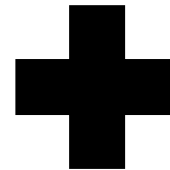
CONGESTION ISSUES



Broadway & 80th St

PROPOSED BUS IMPROVEMENTS

“Queue Jumps” Approaching/Leaving Bus Stops



PROPOSED BUS QUEUE JUMP LOCATIONS



- 75th St, 78th St, and Grand Av NB in existing bus stops only
- Whitney Av, Corona Av, and Grand Av SB would allow overnight parking
- Balances bus priority with parking and curb access needs

Pedestrian Safety Improvements

2

WOODSIDE AV/80TH ST – EXISTING



4 pedestrian injuries
and 1 cyclist fatality
(2012-2016)

Chase
Bank

Baxter Av

Broadway

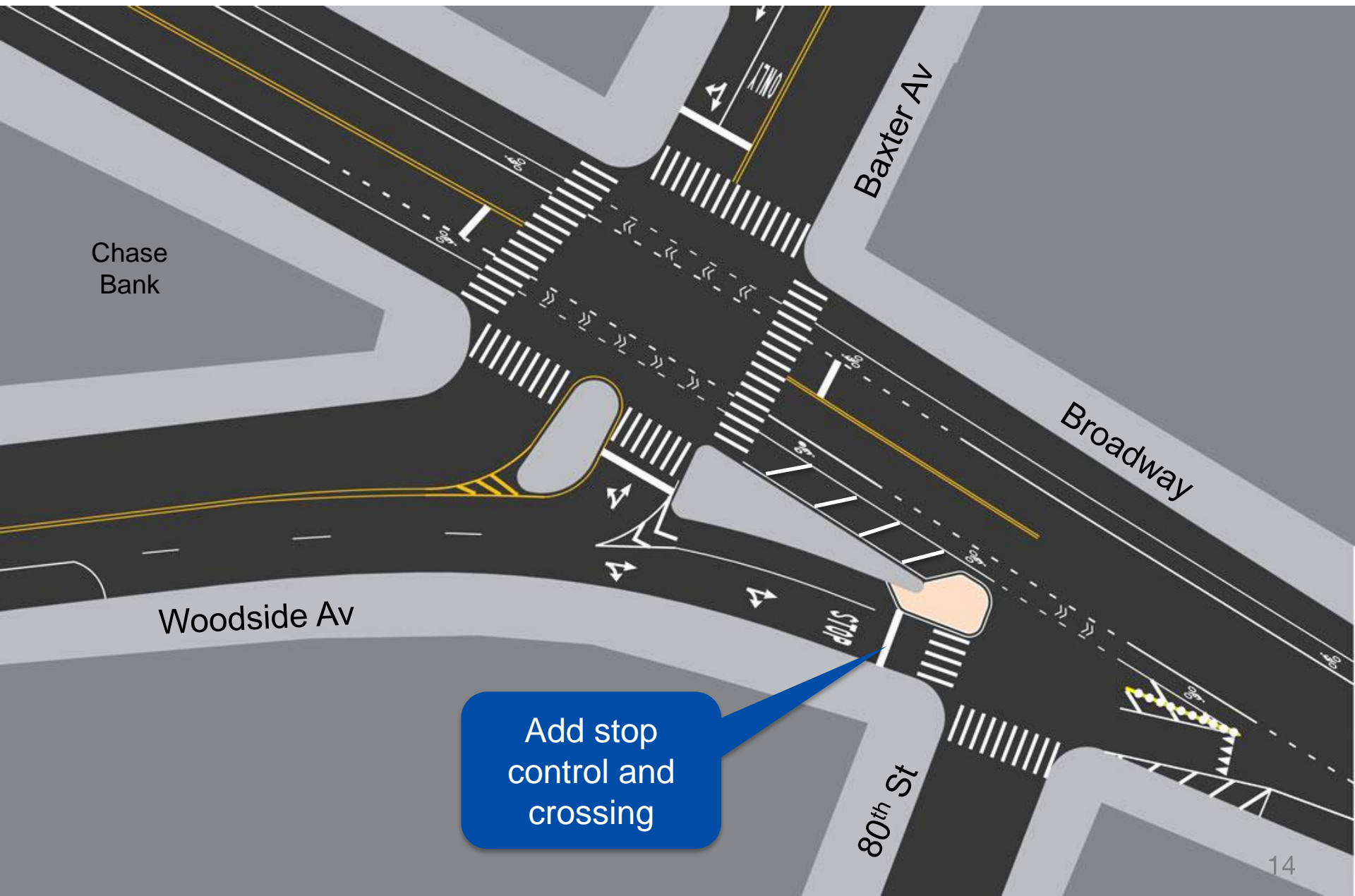
Woodside Av

No legal
crossing

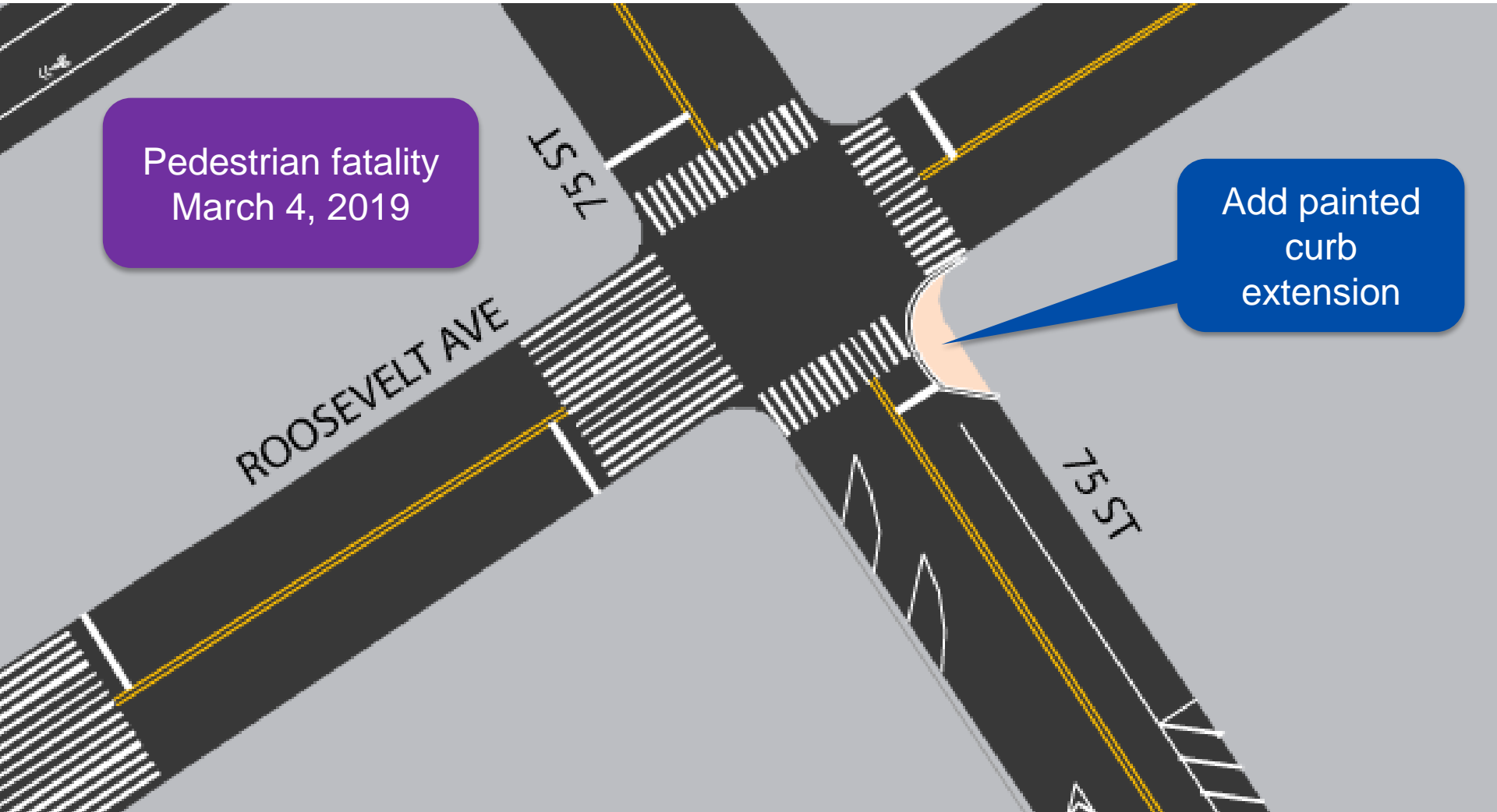
Off Broadway
Car Wash

Yield control

WOODSIDE AV/80TH ST – PROPOSED



ROOSEVELT AV/75TH ST – PROPOSED



Pedestrian fatality
March 4, 2019

Add painted
curb
extension

Big Jump Background

3

EXISTING BICYCLE NETWORK

1

Northern bicycle network connects Broadway to Astoria, Woodside, Jackson Heights and East Elmhurst



31 Ave

2

8 miles of protected bicycle lanes Queens Boulevard link communities from Sunnyside to Rego Park



Queens Blvd



EXISTING BICYCLE TRAFFIC

Bicycle Safety

5 cyclists were severely injured and 1 killed on proposed route between 2013-2017

Bicycle Volumes

293 cyclists counted during 12-hour weekend count on Broadway at 41 Ave (Fall 2017)



Broadway at St James PI

PROPOSED NETWORK CONNECTION



Bicycle Lanes

- Dedicates space for cyclists on the street
- Increases predictability of cyclist's location for motorists and pedestrians
- Separates slower bicycle traffic from motor vehicle traffic



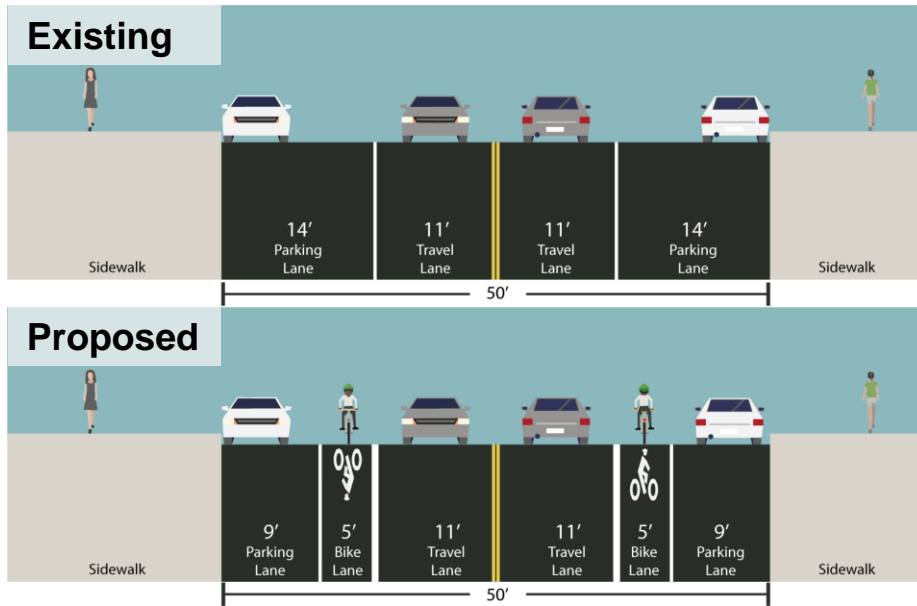
Shared Lane Markings

- Guides cyclists along routes
- Alerts motorists to the presence of cyclists
- Helps align cyclists properly in the street



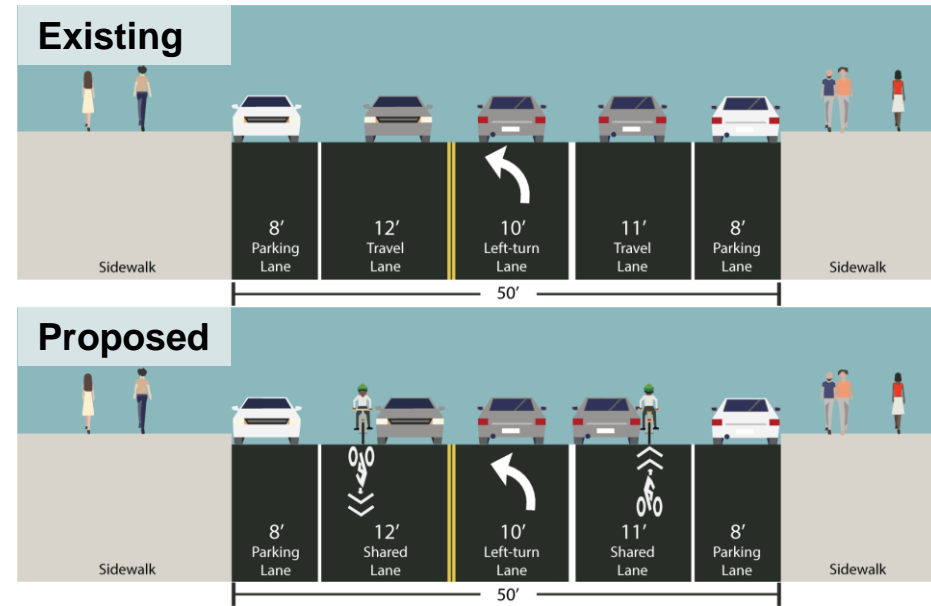
PROPOSED BICYCLE IMPROVEMENTS

Bicycle Lanes and Shared Lanes



Add Bicycle Lanes

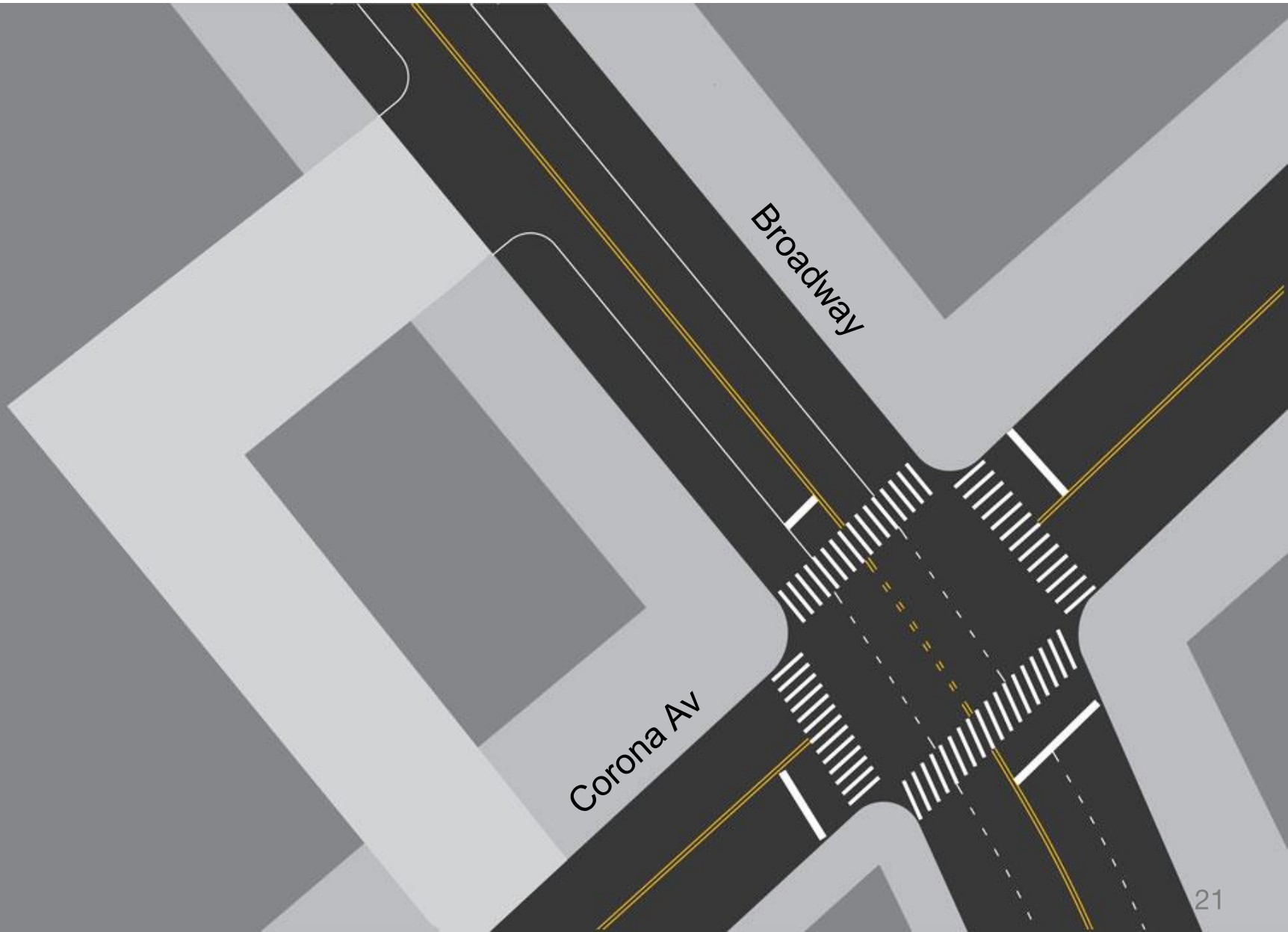
Wide parking lanes are replaced with bicycle lanes in each direction



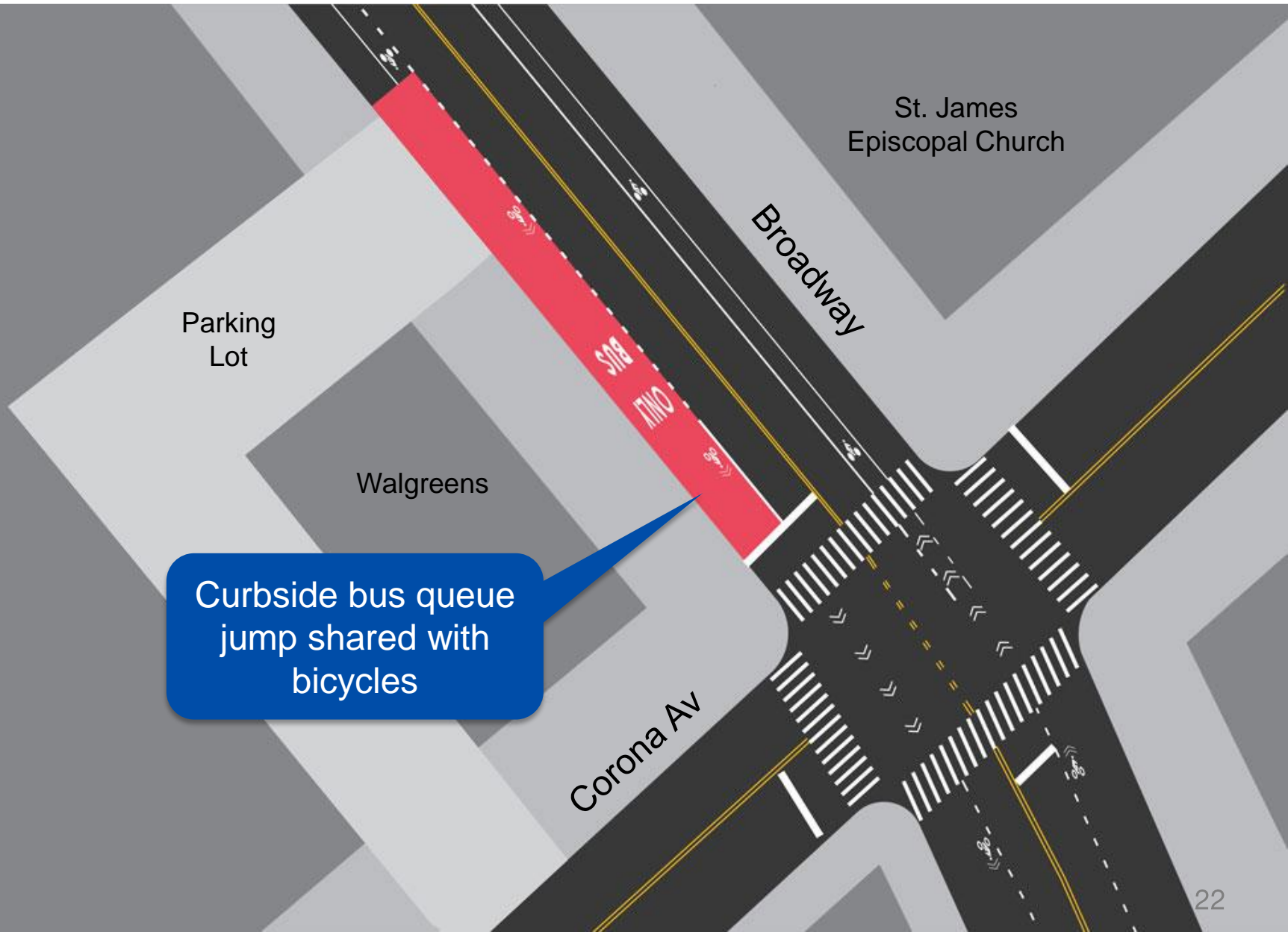
Shared Lane Markings

Where street widths do not allow for dedicated bicycle lanes, shared lanes are used instead.

CORONA AV – EXISTING



CORONA AV – PROPOSED



Curbside bus queue
jump shared with
bicycles

THANK YOU!

Questions?



NYC DOT



NYC DOT



nyc_dot



NYC DOT