

Bowery at Delancey St

Intersection Improvements

2014



New York City Department of Transportation

Presented by the Pedestrian Projects Group, February 11th, 2014 to Manhattan Community Board 3



Project Area

Nearby subways (J/Z)
and M103 bus routes

Commercial corridors
with dense residential

Provides direct access
to/from Williamsburg
Bridge



Crash History

5 years (2008-2012):
63 motor vehicle
occupant injuries
14 pedestrian injuries
10 bicyclist injuries

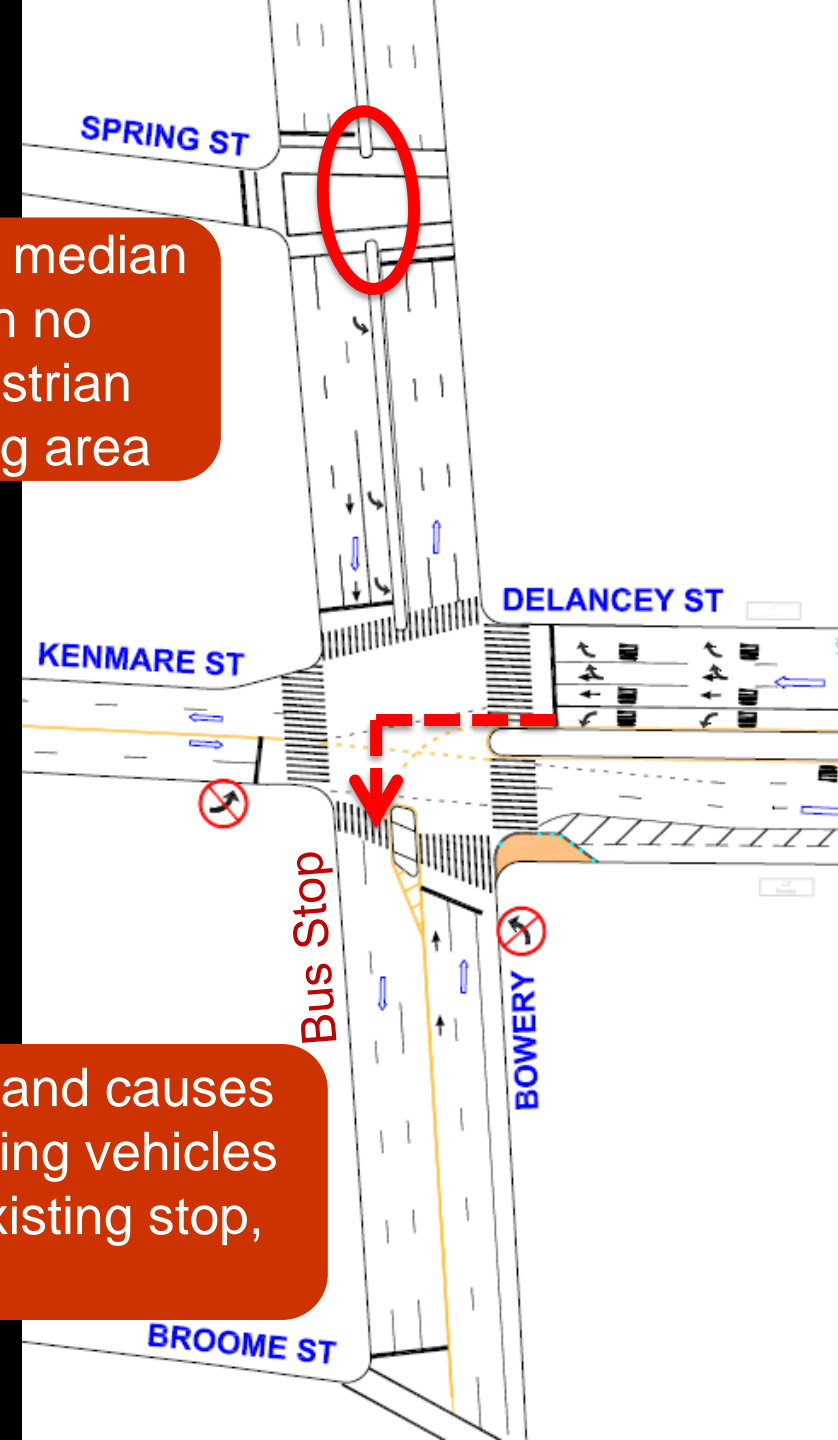


Existing Conditions



Narrow median
with no
pedestrian
waiting area

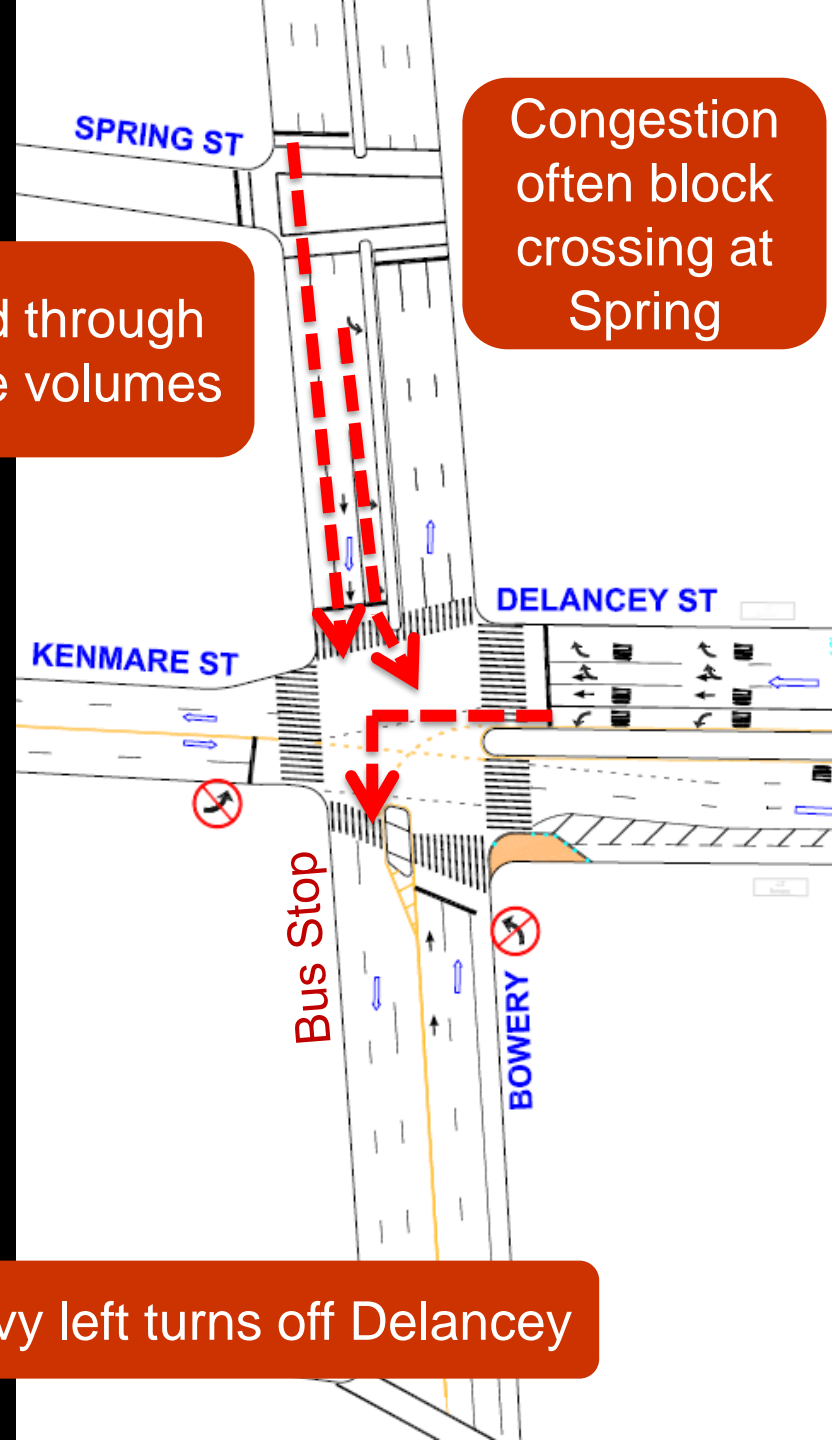
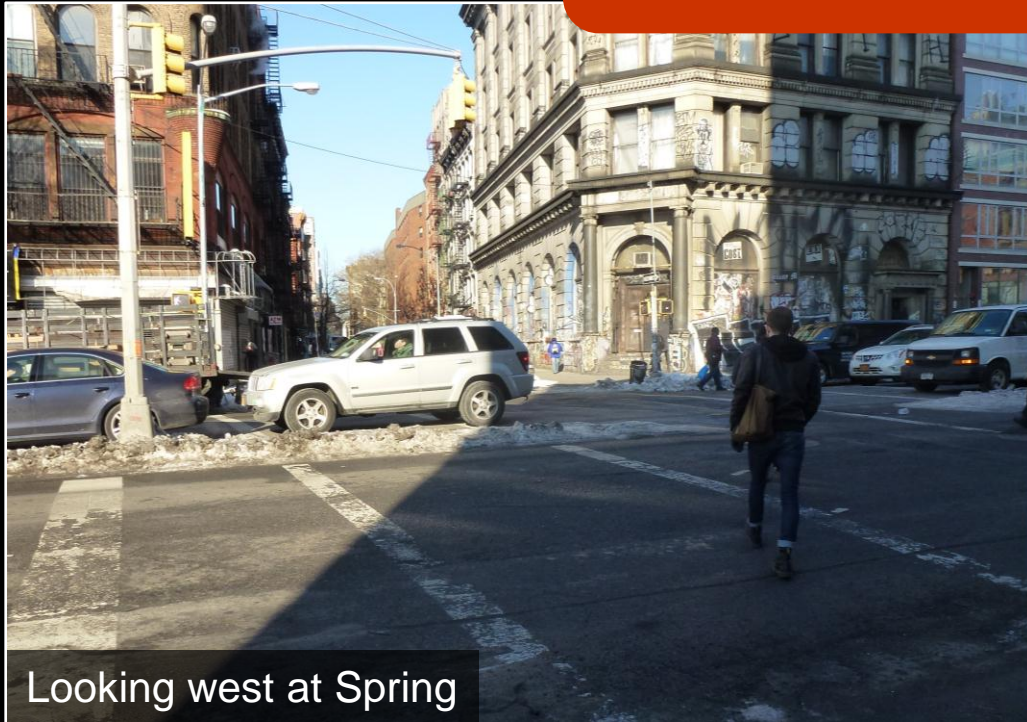
Non-typical pedestrian island causes
difficulty for large left turning vehicles
when bus is present at existing stop,
slowing operations



Existing Conditions

Heavy southbound through and left turn vehicle volumes

Congestion often block crossing at Spring



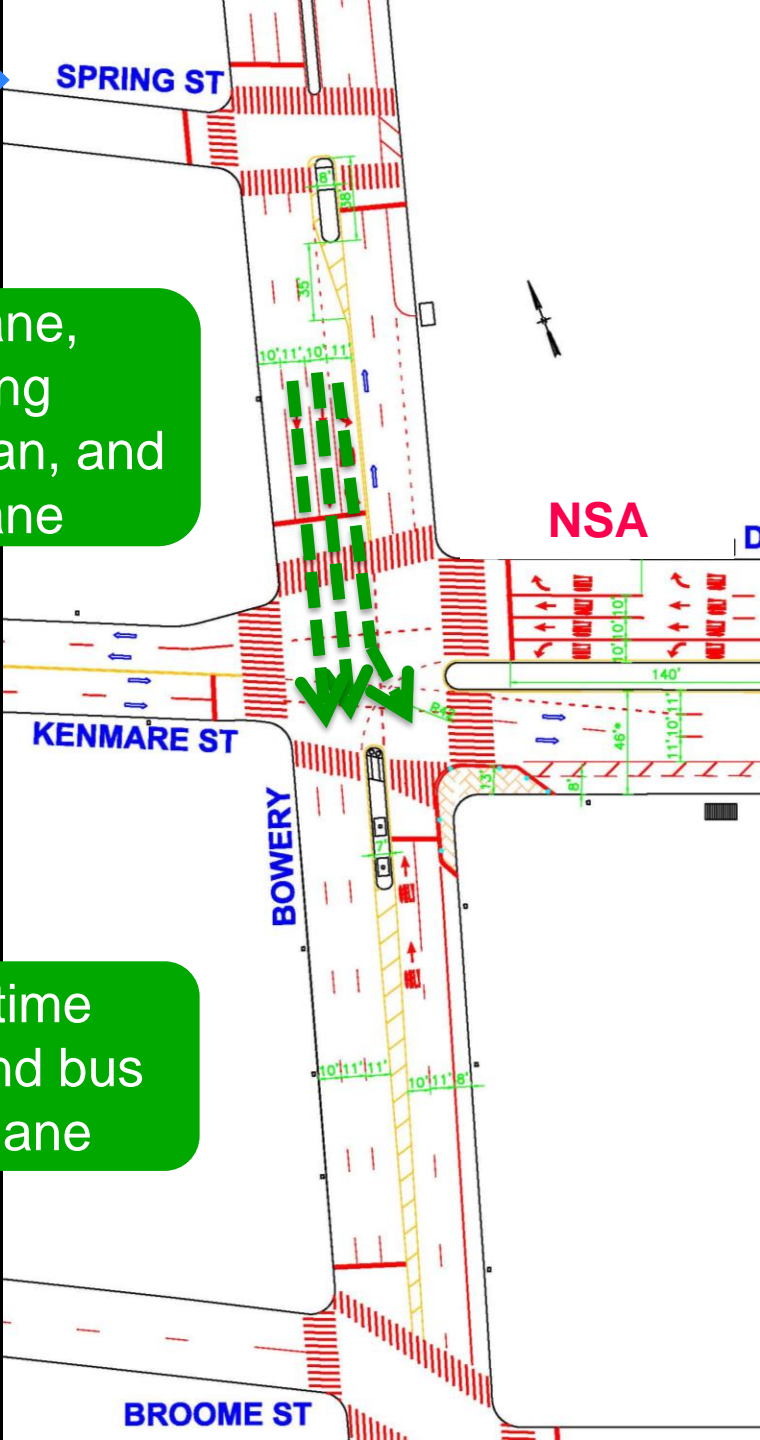
Heavy left turns off Delancey

Proposal

Shift left turn lane,
remove existing
substandard median, and
add through lane

- Reduces congestion
- Clears crosswalk at Spring
- Reduces pressure, lowers failure to yield potential

Create two full time receiving lanes and bus stop/rush hour lane



Proposal

New island with
pedestrian waiting area

Improved pedestrian crossings on south crosswalks

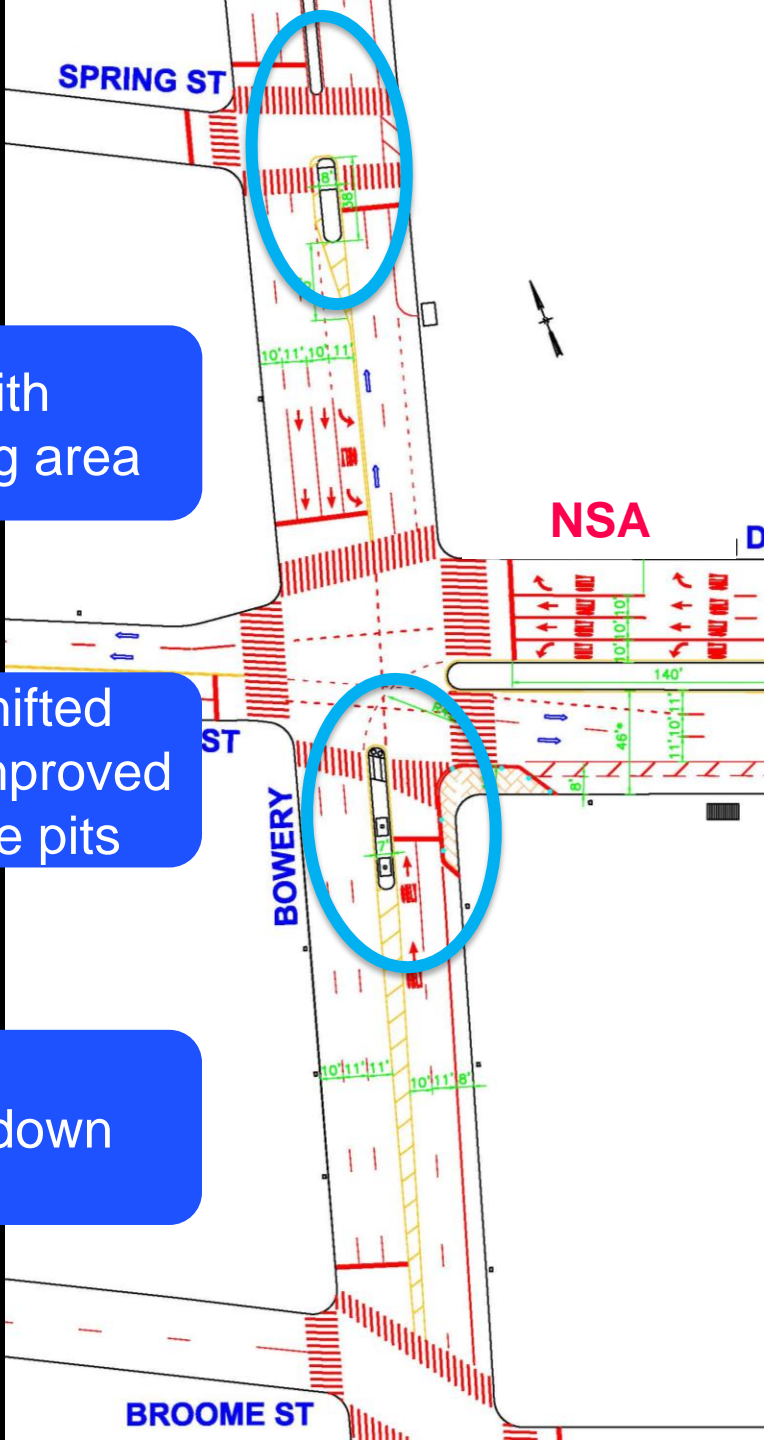
Adds greenery

Improved pedestrian crossings on south crosswalks

Adds greenery

Narrower and shifted island allows for improved left turns and tree pits

Expanded neckdown



Proposal

11 second head start for pedestrians

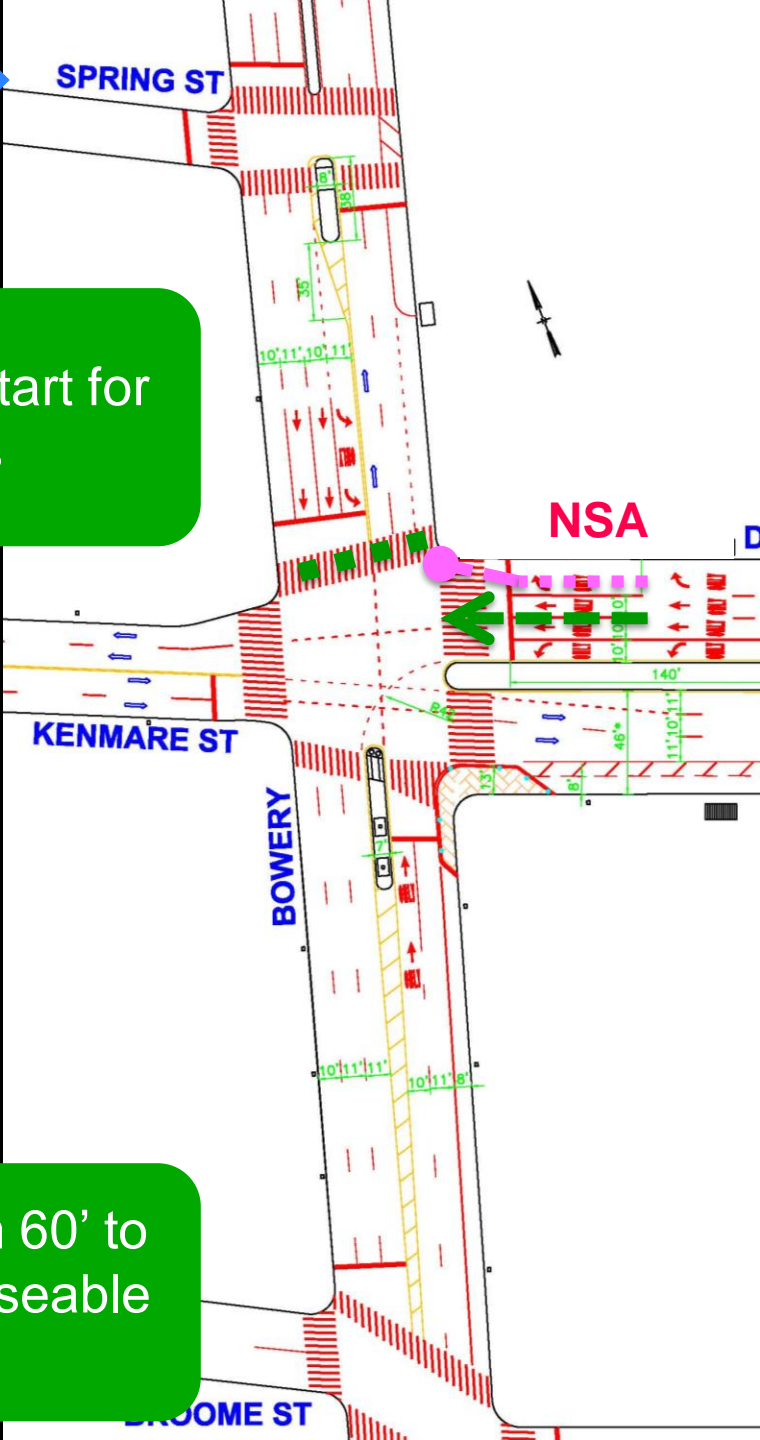
Improves conditions for
pedestrians in north
crosswalk

Improved lane reduces
turning pressure

Improved lane reduces turning pressure



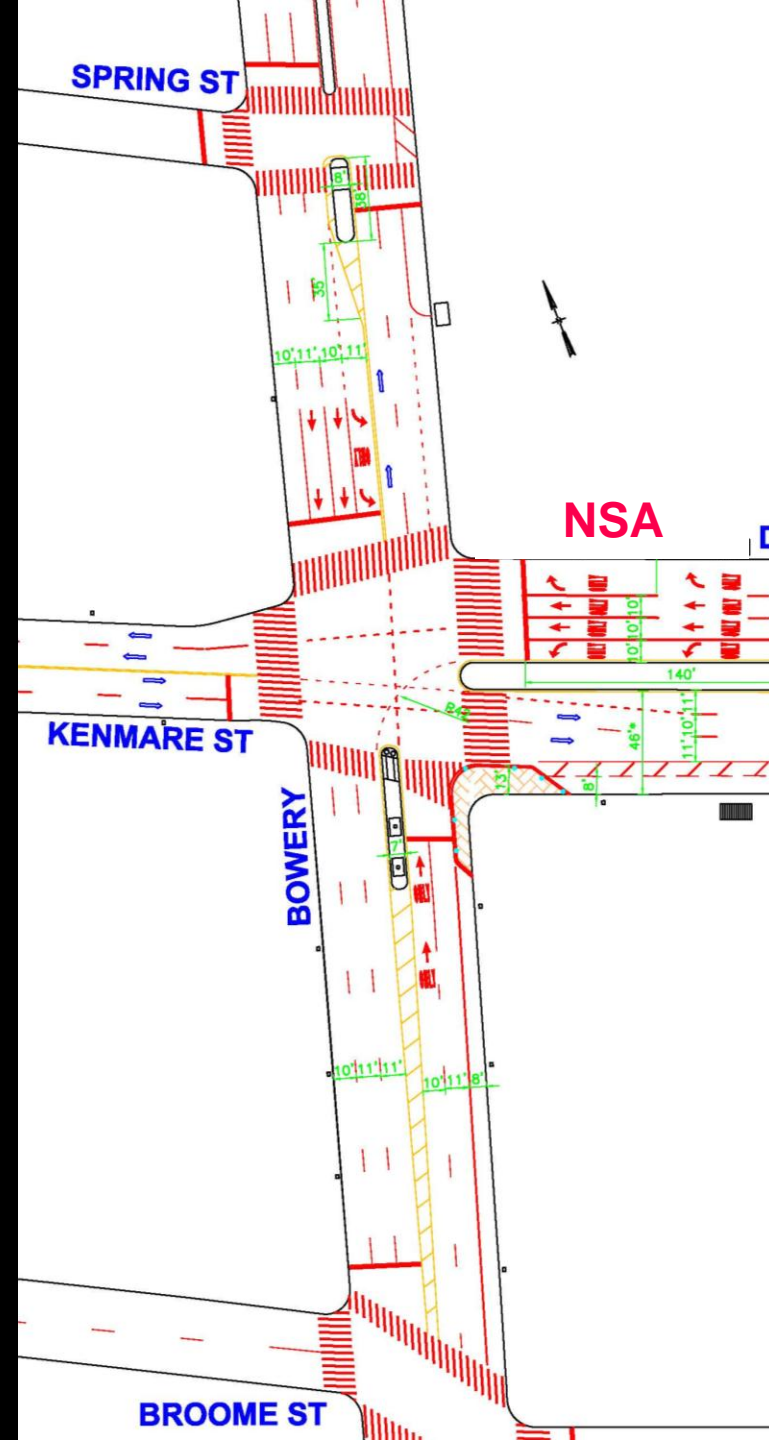
Expand NSA from 60' to 130' to allow for useable turn lane





Summary

1. Reshape island to allow easier turns
2. Add new island at Spring St to improve pedestrian safety
3. Shift SB left turn bay and add another through lane with two full time receiving lanes to ease intersection congestion
4. Add 11 second leading pedestrian phase
5. Expand NSA on north curb of Delancey



nyc.gov/dot

Thank
You

