



Boone Ave (W Farms Rd to Freeman St)

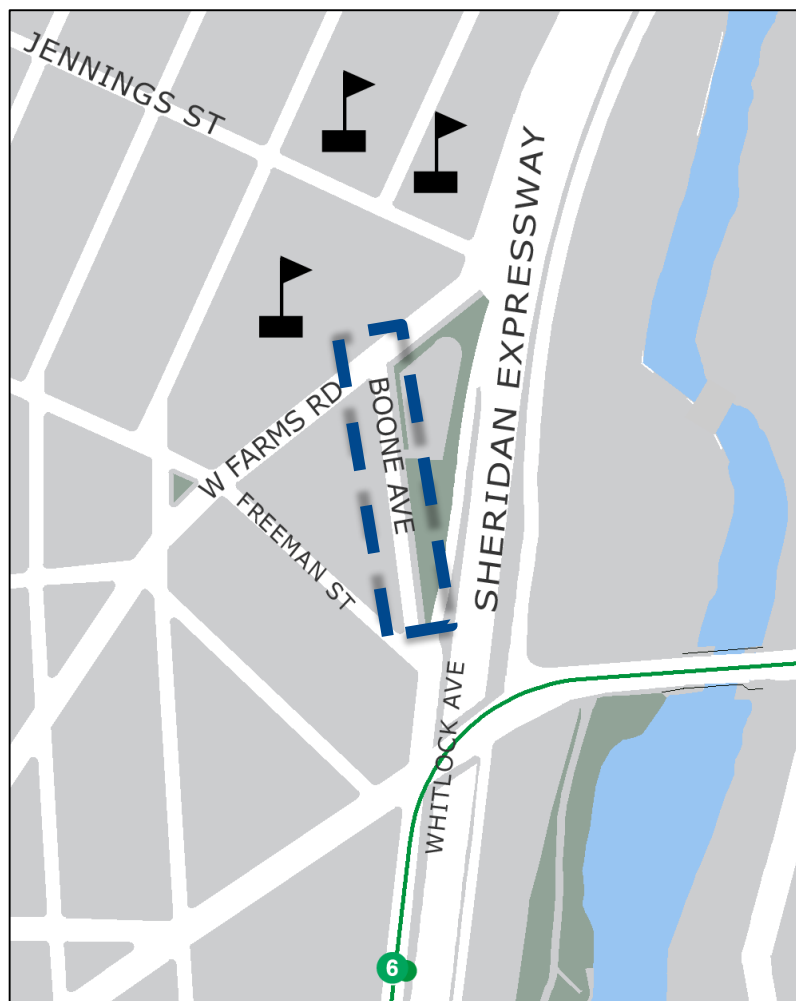
Safety Improvements

Bronx Community Board 3 | April 2021



Project Location

- Request for study from community due to safety concerns
- Adjacent to Whitlock Ave 6 subway station
- Four schools north of the intersections – I.S. 84, P.S. 66 and Fannie Lou Hamer Freedom MS and HS
- Boone Ave and Freeman Street mainly have multi-family buildings and parking garages
- Project area is adjacent to Daniel Boone Playground
- Boone Ave is a local truck route



= project limits

Safety Data

Injury Summary, 2015-2019 (5 Years)

	Total Injuries	Severe Injuries	Fatalities	KSI
Pedestrian	4	0	0	0
Bicyclist	0	0	0	0
Motor Vehicle Occupant	6	0	0	0
	0	0	0	0
Total	10	0	0	0

Source: Fatalities: NYCDOT, Injuries: NYSDOT KSI: Persons Killed or Severely Injured



Map does not include total or severe injuries that occurred at midblock locations
Data is based off of NYSDOT/NYS DMV crash and injury data available as of 2/2022

Existing Conditions

Freeman St/Whitlock Ave/Boone Ave

- Vehicles coming from Boone Ave and Freeman St compete to merge onto Whitlock Ave first, creating unpredictable movements for pedestrians
- Pedestrians crossing to nearby subway station and schools face long crossing distances



Existing Conditions

Freeman St/Whitlock Ave/Boone Ave

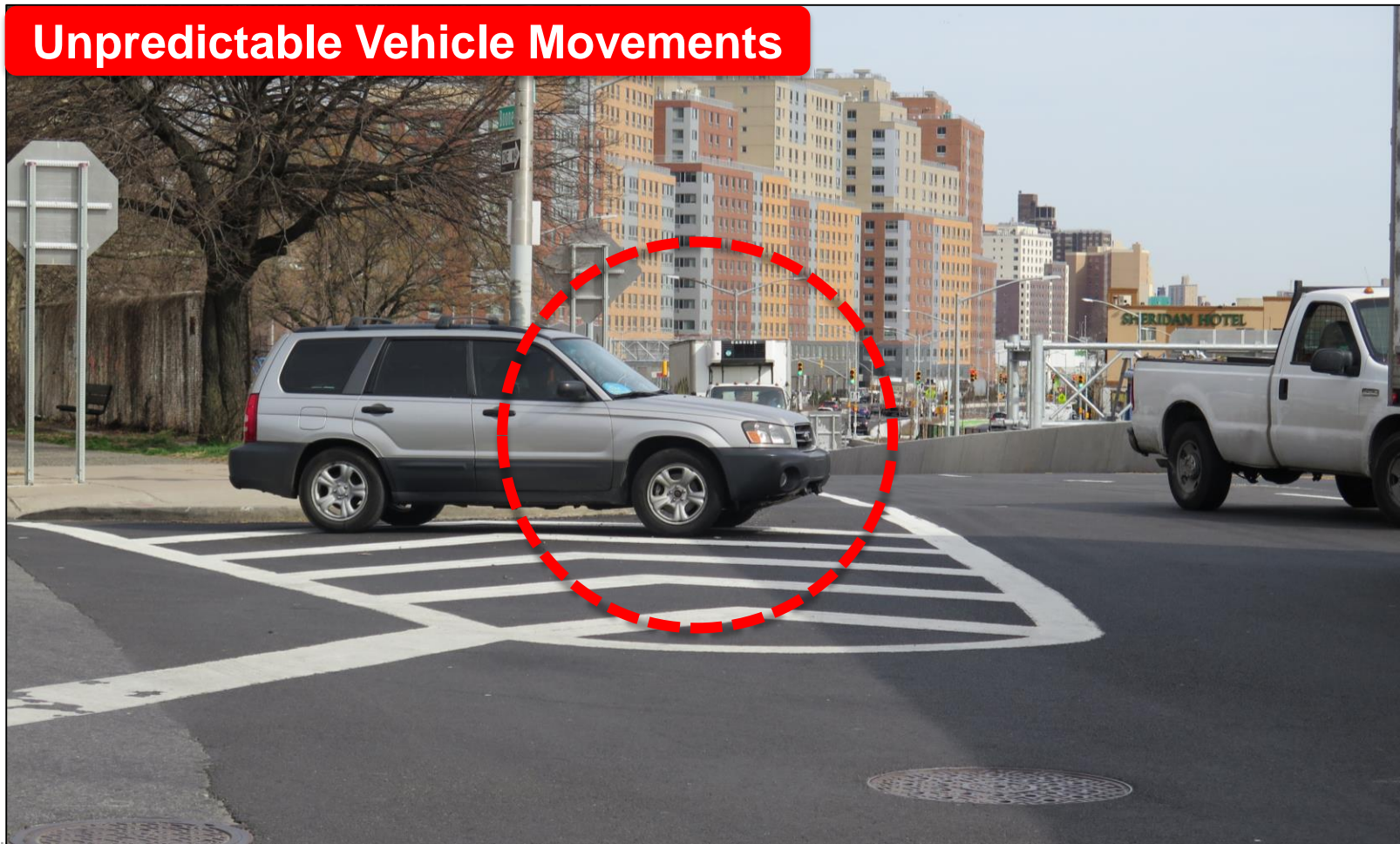
Disorganized Merging



Existing Conditions

Freeman St/Whitlock Ave/Boone Ave

Unpredictable Vehicle Movements



Existing Conditions

Freeman St/Whitlock Ave/Boone Ave

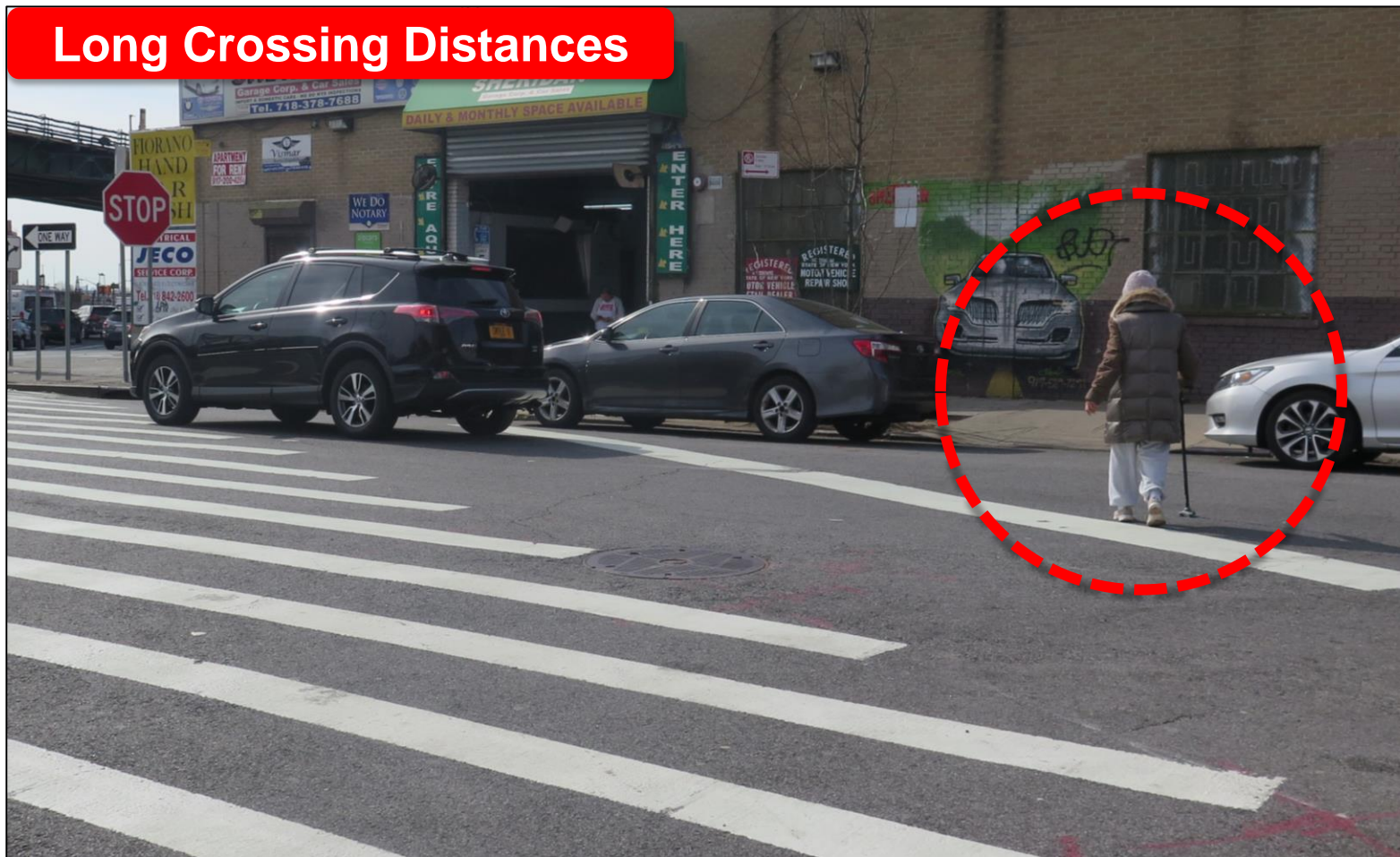
Missing Crosswalk



Existing Conditions

Freeman St/Whitlock Ave/Boone Ave

Long Crossing Distances



Existing Conditions

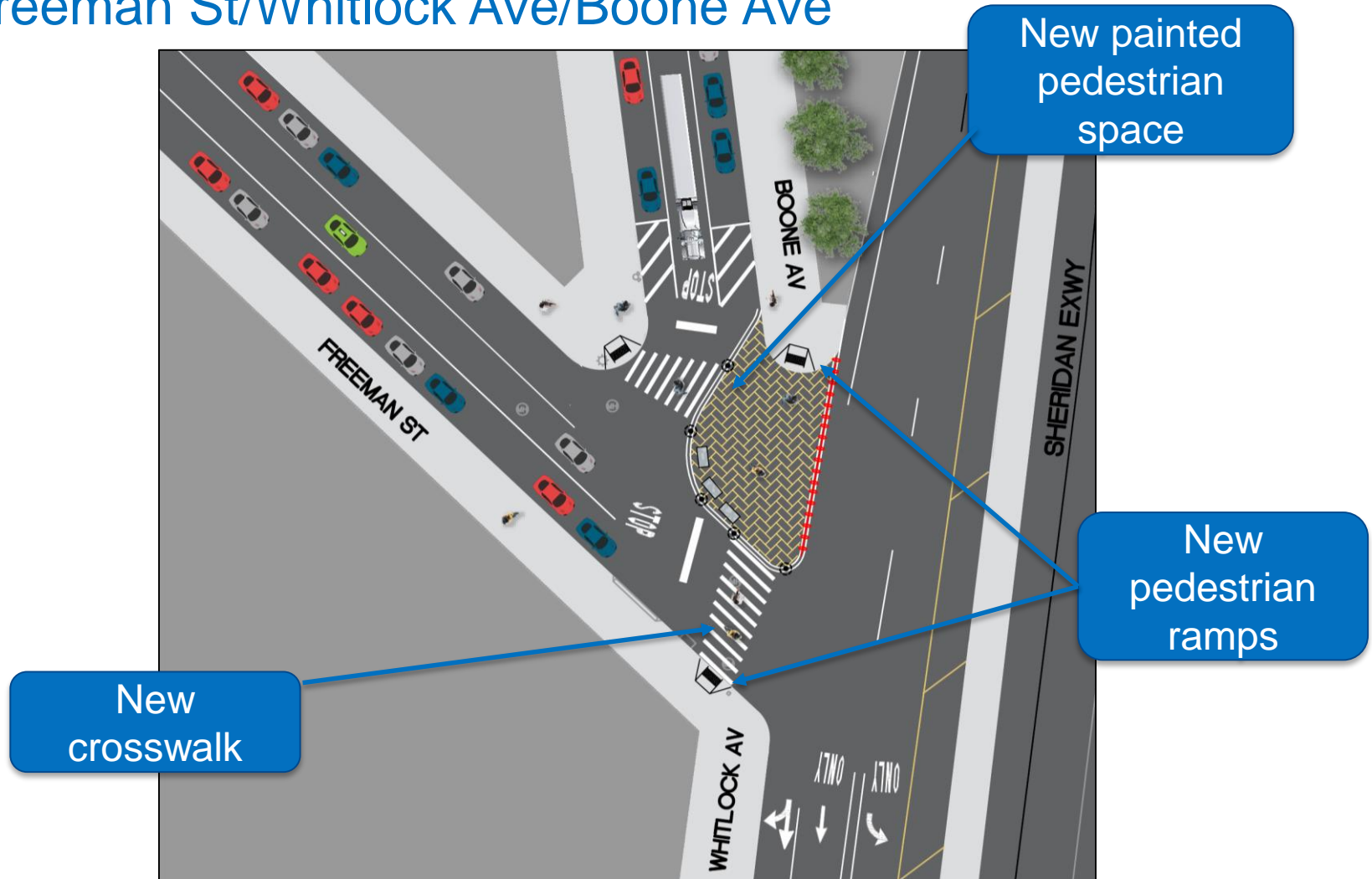
W Farms Rd and Boone Ave

Missing Crosswalk



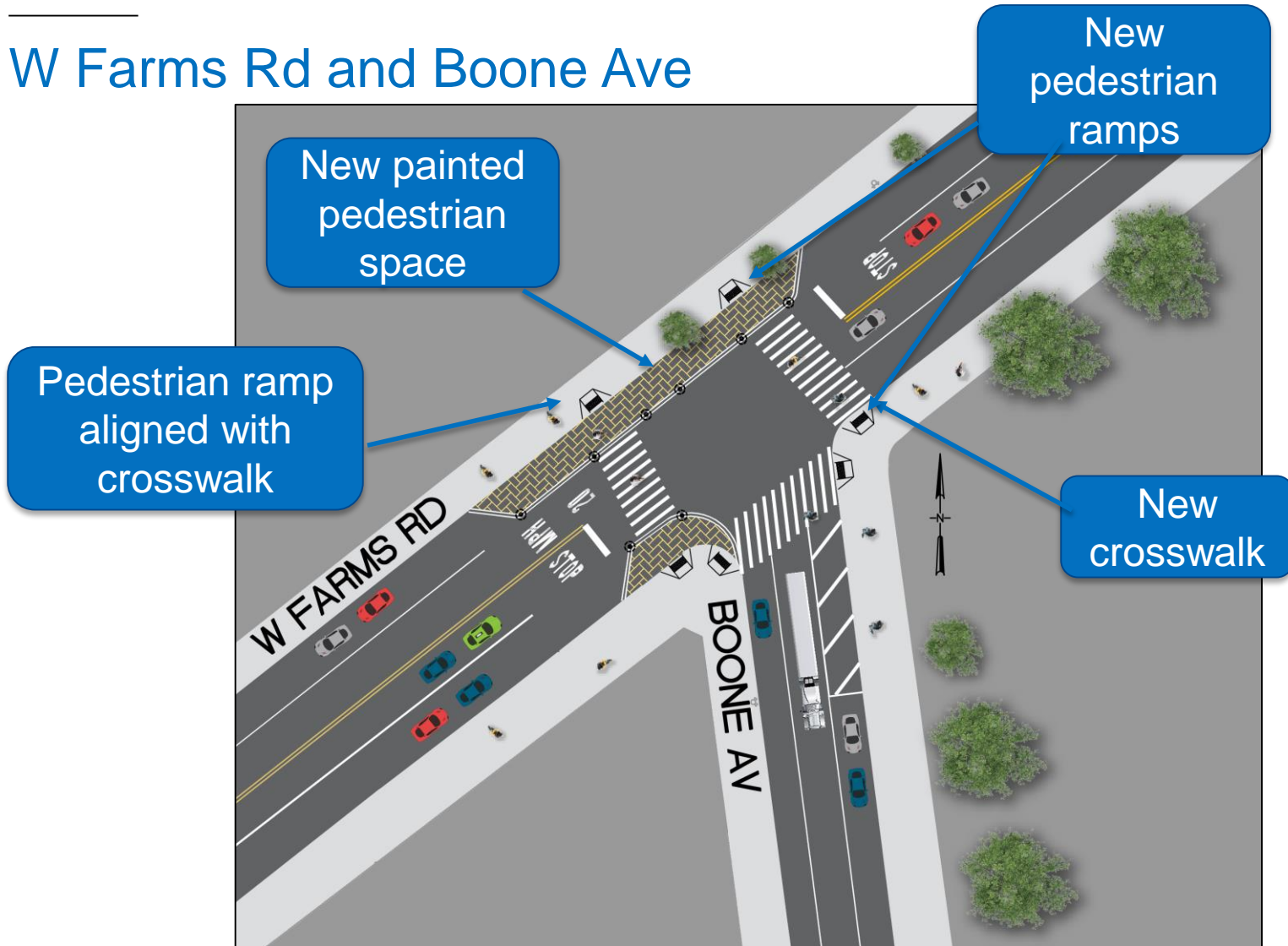
Proposed Intersection Improvements

Freeman St/Whitlock Ave/Boone Ave



Proposed Intersection Improvements

W Farms Rd and Boone Ave



Project Benefits

- Improves predictability of movement for cars merging onto Whitlock Ave from Freeman St and Boone Ave
- Shortens crossing distances for pedestrians
- Improves visibility for pedestrians and vehicles
- Slows turns from W Farms Rd onto Boone Ave



Example: Bronx River Ave and Colgate Ave

Thank You!

Questions?



NYCDOT



nyc_dot



nyc_dot



NYCDOT