



BEACH 108TH ST CAPITAL RECONSTRUCTION

Presentation to Rockaway Park Community

February 28, 2018

AGENDA

1. Project Background
2. Reconstruction Goals
3. Project Concepts
4. Open Q & A Session

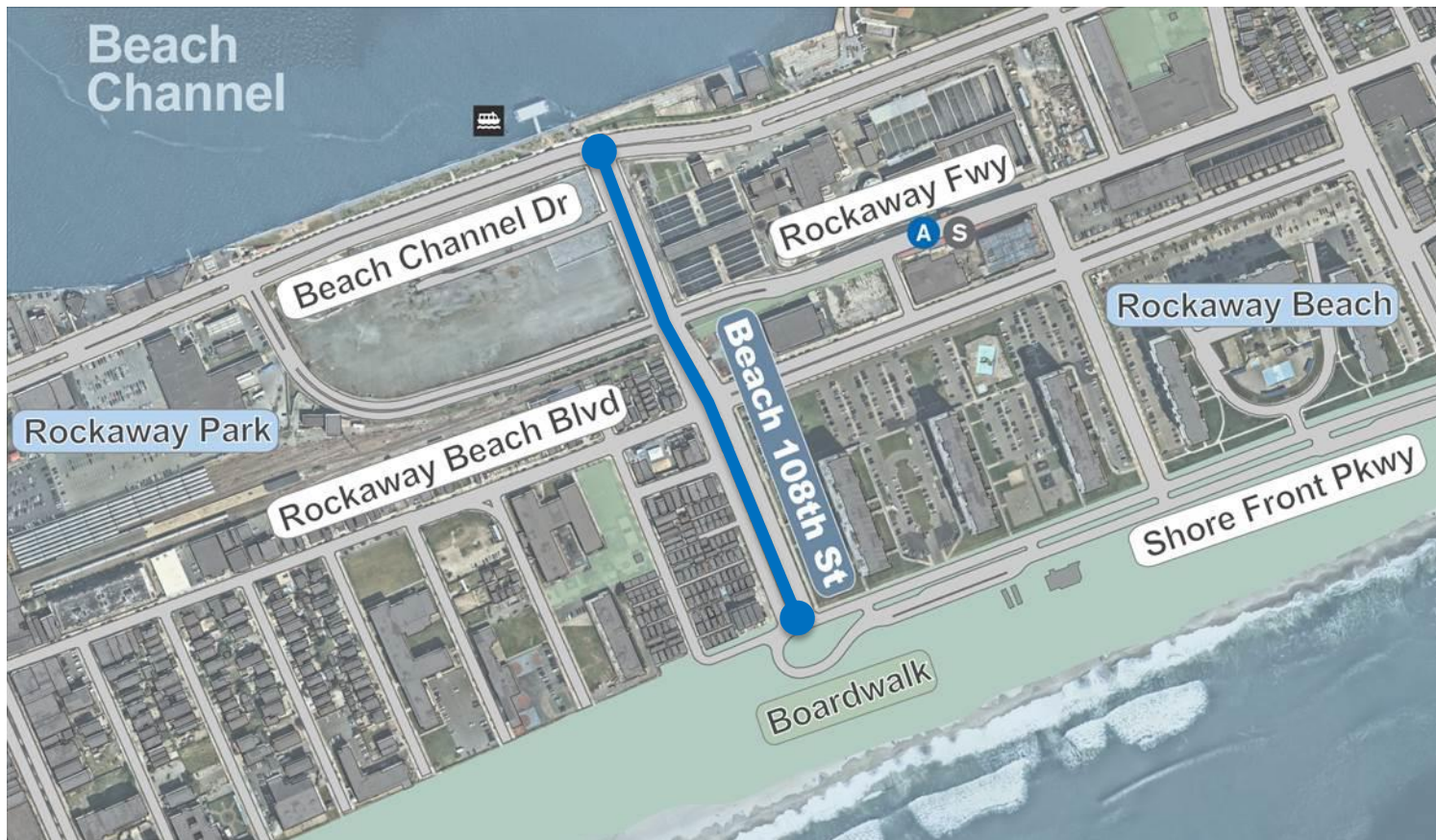


Project Background

1

PROJECT AREA AND ORIGIN

Rockaway West NY Rising report identified Beach 108th St as a key economic development and infrastructure project. DOT/DDC will be reconstructing Beach 108th St between Beach Channel Drive and Shore Front Parkway.



PROJECT FUNDING

\$16.9 million project

\$3.8 million in city funds

\$13.1 million in federal HUD funding



BACKGROUND

- Requests from community for left turn bays and phases at Rockaway Beach Blvd and Beach 108th St
- Requests from community for reconstructed sidewalks to ferry
- Area-wide requests for angled parking
- Ferry launched in May 2017
- 2 Motorist KSI's (killed or severely injured) occurred at Rockaway Freeway

Beach 108th St (Beach Ch. Dr. to Shore Front Pkwy), QN

Injury Summary, 2012-2016 (5 years)

	Total Injuries	Severe Injuries	Fatalities	KSI
Pedestrian	3	0	0	0
Bicyclists	2	0	0	0
Motor Vehicle Occupant	21	2	0	2
Total	26	2	0	2



Beach 108th St at Rockaway Beach Blvd

EXISTING CONDITIONS

- Roadway varies in width and alignment
- Southbound: one consistent thru lane
- Northbound: one thru lane, widening to two past Rockaway Beach Blvd
- NB left turn lane at Rockaway Fwy, left turn bays at Rockaway Beach Blvd
- Buffered bike lanes connecting to Rockaway Beach Blvd lanes and Shore Front Pkwy path
- Parking on majority of medians with excess channelization



Project Goals

2

PEDESTRIANS

Goal: Improve Pedestrian Accessibility and Safety to Ferry and Boardwalk

- Sidewalks in poor condition
- High pedestrian volumes on west side of street with narrow sidewalks



Sidewalk in poor condition north of Rockaway Fwy



Long crosswalks at Rockaway Beach Blvd

VEHICLES

Goal: Improve roadway alignment and vehicular operations

- Street profile narrows north of Rockaway Beach Blvd
- Offset alignment and skewed intersection with no left turn phases at Rockaway Beach Blvd creates conflicts between turning vehicles

Goal: Maintain or add parking along project corridor

- High parking demand area



Alignment shifts north of Rockaway Beach Blvd



Heavy left turns at Rockaway Beach Blvd

BICYCLES

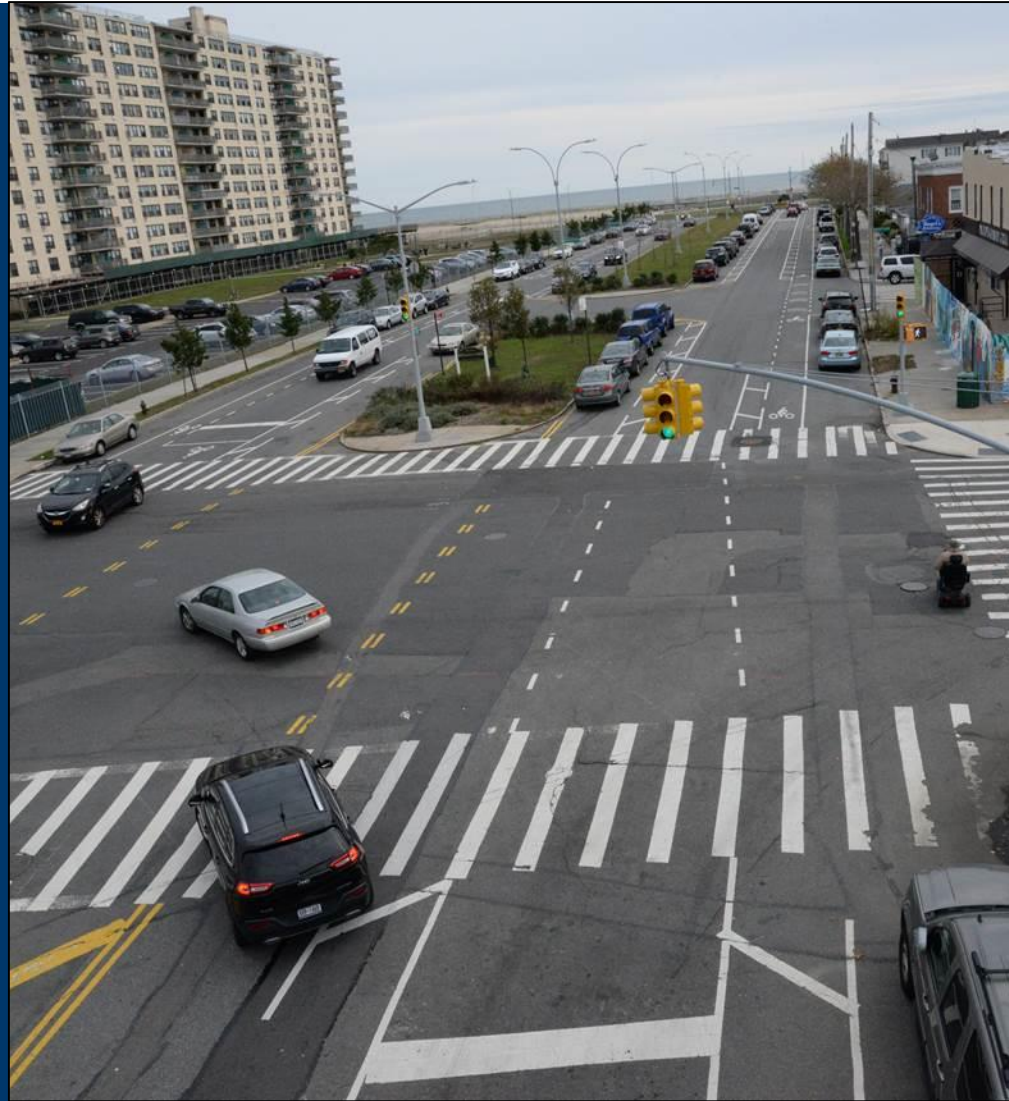
Goal: Improve bicycle access to ferry and boardwalk

- Existing bike lane on one block of Beach 108th St does not connect to ferry
- Current buffered lanes have frequent double parking



GOALS SUMMARY

- 1.Improve pedestrian access
- 2.Improve roadway alignment
- 3.Improve vehicular operations
- 4.Maintain or add parking
- 5.Improve bicycle access
- 6.Maintain Landscaping



Project Concepts

3

IMPROVE PEDESTRIAN ACCESS

- Reconstruct and widen sidewalks to improve ADA access to Ferry and Boardwalk
- Add street trees on sidewalk where feasible

Beach
Channel Dr

Rockaway
Freeway

Rockaway
Beach Blvd

Shore Front
Pkwy



RECONSTRUCT MEDIANS

- Reconstruct and shift medians to the west
- Extend median tips into crosswalks to increase safety
- Add/maintain greenery on northern and southern medians
- Close median at Rockaway Beach Dr and create continuous treatment

Beach
Channel Dr

Rockaway
Freeway

Rockaway
Beach Blvd

Shore Front
Pkwy



IMPROVE ROADWAY ALIGNMENT

- Shifting medians allows for improved alignment for northbound vehicles
- Shortens crosswalks at Rockaway Beach Blvd
- Improve WB Rockaway Beach Blvd alignment to reduce vehicles continuing thru from left turn lane

Beach
Channel Dr

Rockaway
Freeway

Rockaway
Beach Blvd

Shore Front
Pkwy



ADD PROTECTED LEFT TURN PHASES

- Improving alignment allows for protected left turn phases at Rockaway Beach Blvd, Rockaway Freeway and Beach Channel Drive
- Reduces conflicts between drivers, cyclists and pedestrians

Beach
Channel Dr

Rockaway
Freeway

Rockaway
Beach Blvd

Shore Front
Pkwy



MAINTAIN OR ADD PARKING

- Shifted medians allow for back-in angled parking on east side between Rockaway Beach Blvd and Shore Front Pkwy
- Add parking on Rockaway Fwy and restore parking on Shore Front Pkwy
- Current conceptual plan adds approximately 10 spaces
- Expanded north median could be landscaped or allow parking

Beach
Channel Dr

Rockaway
Freeway

Rockaway
Beach Blvd

Shore Front
Pkwy



IMPROVE BICYCLE ACCESS

- Reconstructed medians and protected left turn phases allow for two-way bike path on the median
- Removes bikes from roadway reducing conflicts with turning vehicles, parking maneuvers, and double parking
- Connect bicyclists to boardwalk and ferry

Beach
Channel Dr

Rockaway
Freeway

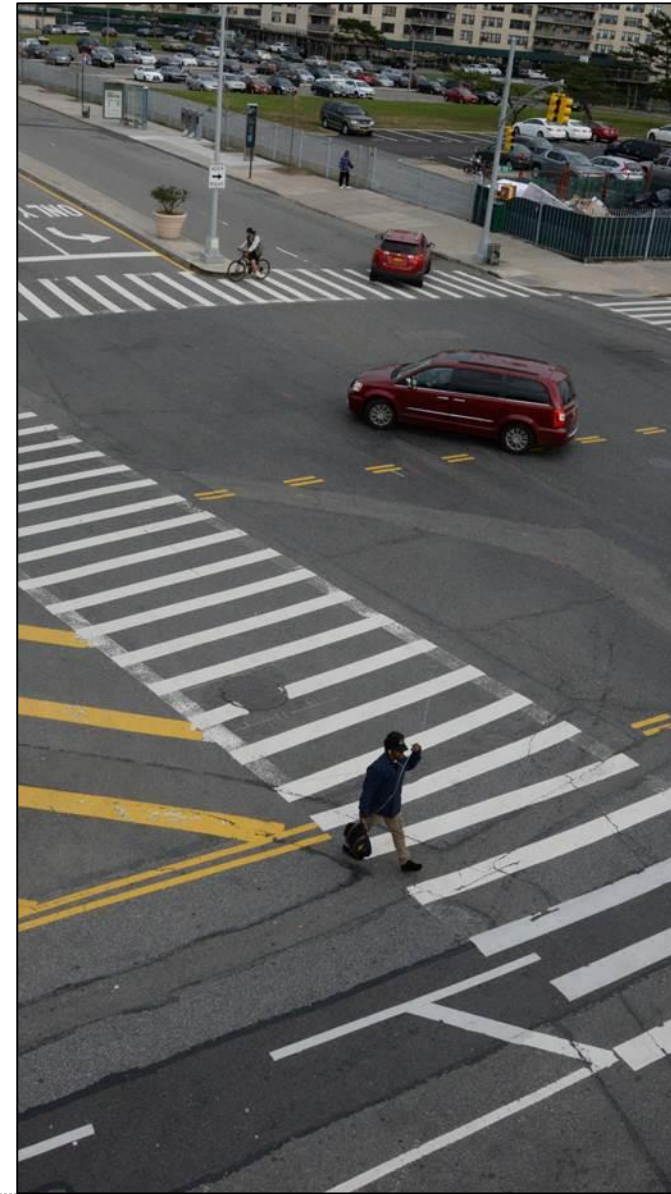
Rockaway
Beach Blvd

Shore Front
Pkwy



CONCEPTUAL SUMMARY

- Reconstruct and widen sidewalks
- Reconstruct and shift medians, adding greenery where possible
- Improve alignment for northbound vehicles
- Add protected left turn phases at Rockaway Beach Blvd, Rockaway Freeway and Beach Channel Drive
- Add approximately 10 parking spaces
- Improve alignment for Rockaway Beach Blvd at 108th St
- Add two-way bike path to median

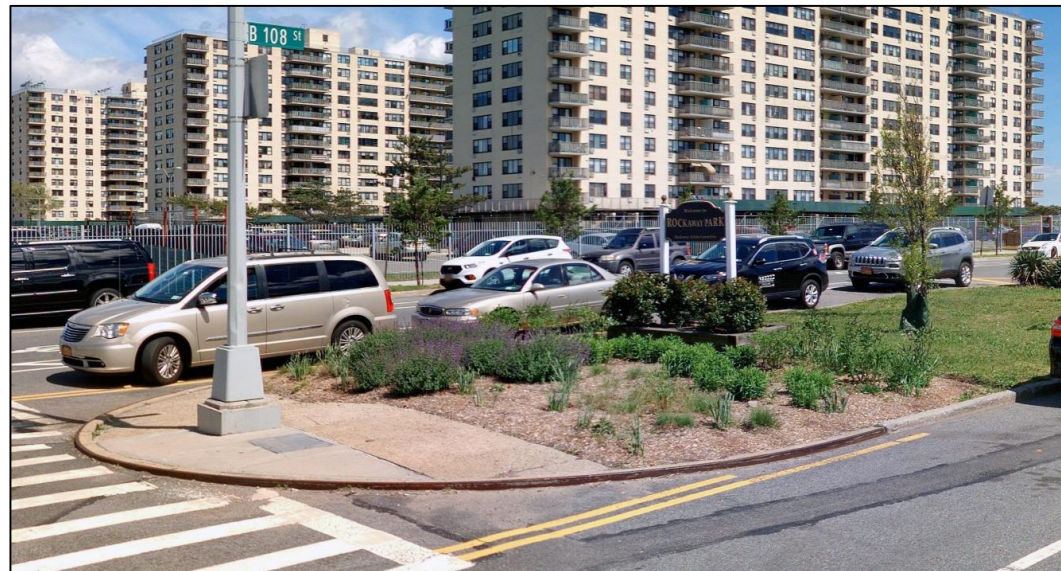


Open Q & A

4

CURRENT LANDSCAPING

- Median grass and trees managed by DPR
- Median tip and circle plantings (flowers and low shrubs) maintained by DPR with assistance from civics
- DPR, DEP, and DOT have no maintenance capacity for additional plantings other than trees and grass



THANK YOU!

Questions?



NYC DOT



NYC DOT



nyc_dot



NYC DOT