



BAY RIDGE AND DYKER HEIGHTS

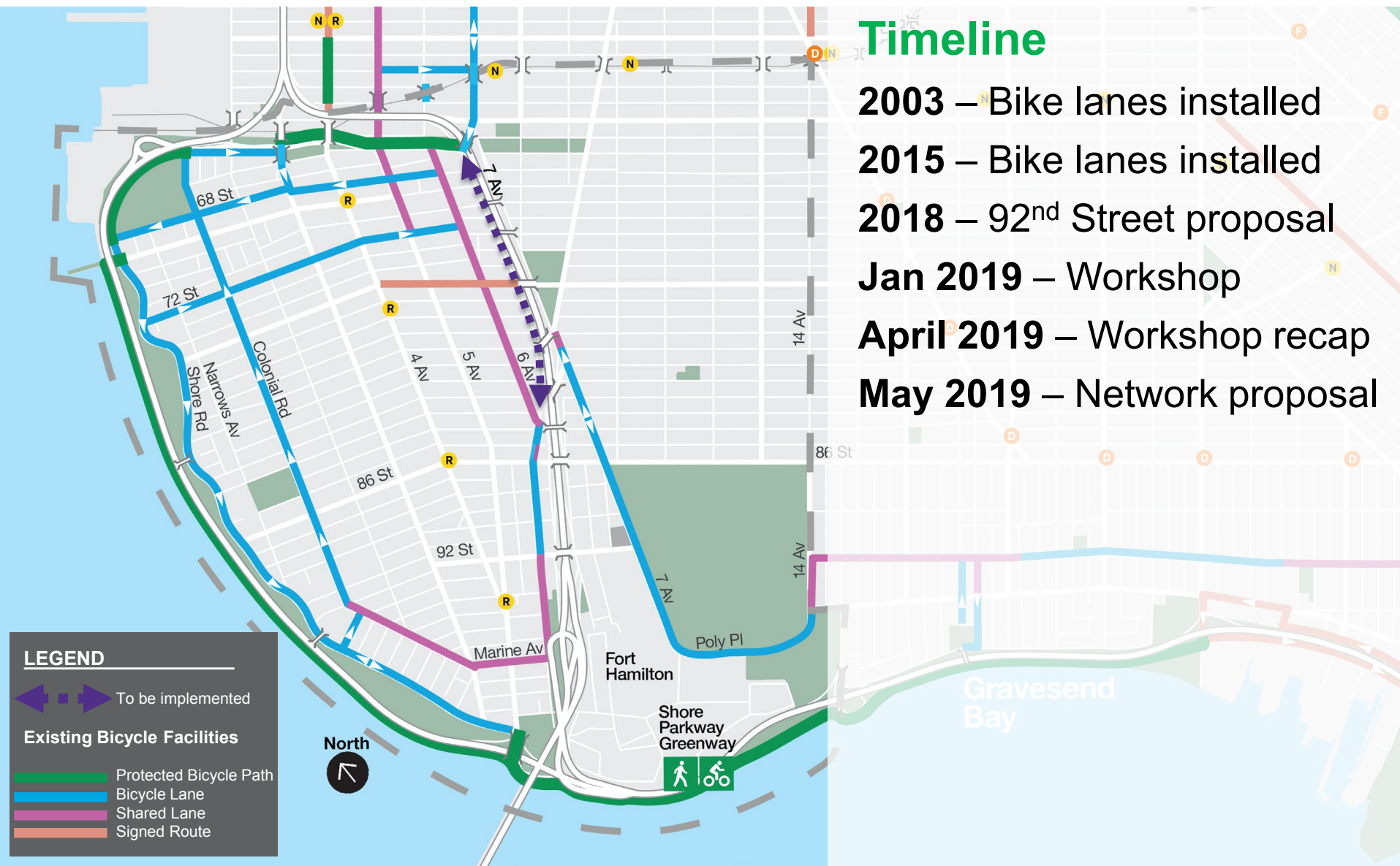
Bike Network Expansion

May 9, 2019

Workshop Recap

1

Existing Bike Network



Overview

Wednesday, January 16, 2019
Shore Hill Community Room, 9000 Shore Rd

Over 70 people in attendance

Attendees included people who walk, people who bike, people who drive

DOT [website](#) opened for additional community feedback



Where People are Going

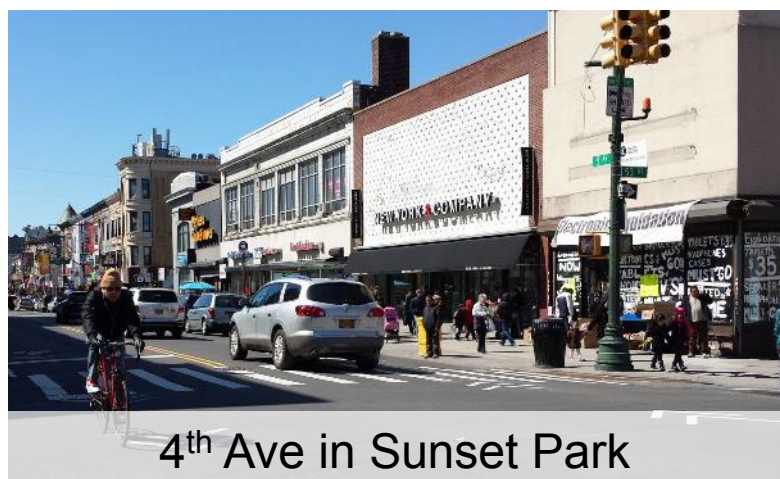
- Ferry
- Owl's Head Park
- McKinley Park
- Schools
- 3rd, 4th and 5th Avenue
- Commercial Destinations
- 86th Street
- Destinations
- Greenway
- Industry City
- Downstate Medical Center
- Sunset Park
- Park Slope
- Bensonhurst
- Manhattan
- Staten Island
- Coney Island



Greenway and Ferry



Bensonhurst



4th Ave in Sunset Park



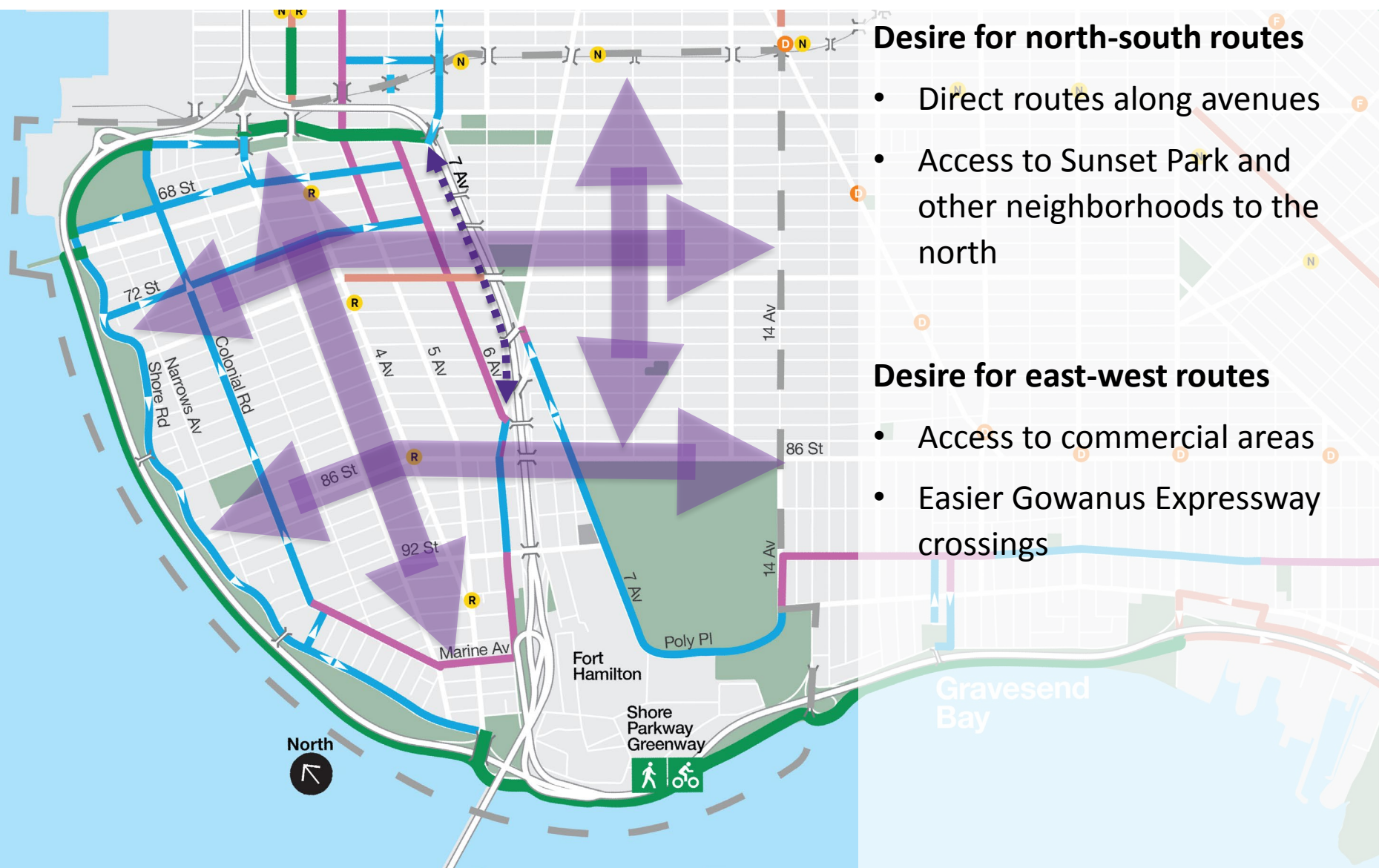
3rd Ave in Bay Ridge

Community Concerns

- Double parking
- Truck loading
- Congestion on main thoroughfares
- Bus and Bike conflicts
- Enforcement of traffic law
- Traffic education



Routes Mentioned in the Workshop



Desire for north-south routes

- Direct routes along avenues
- Access to Sunset Park and other neighborhoods to the north

Desire for east-west routes

- Access to commercial areas
- Easier Gowanus Expressway crossings

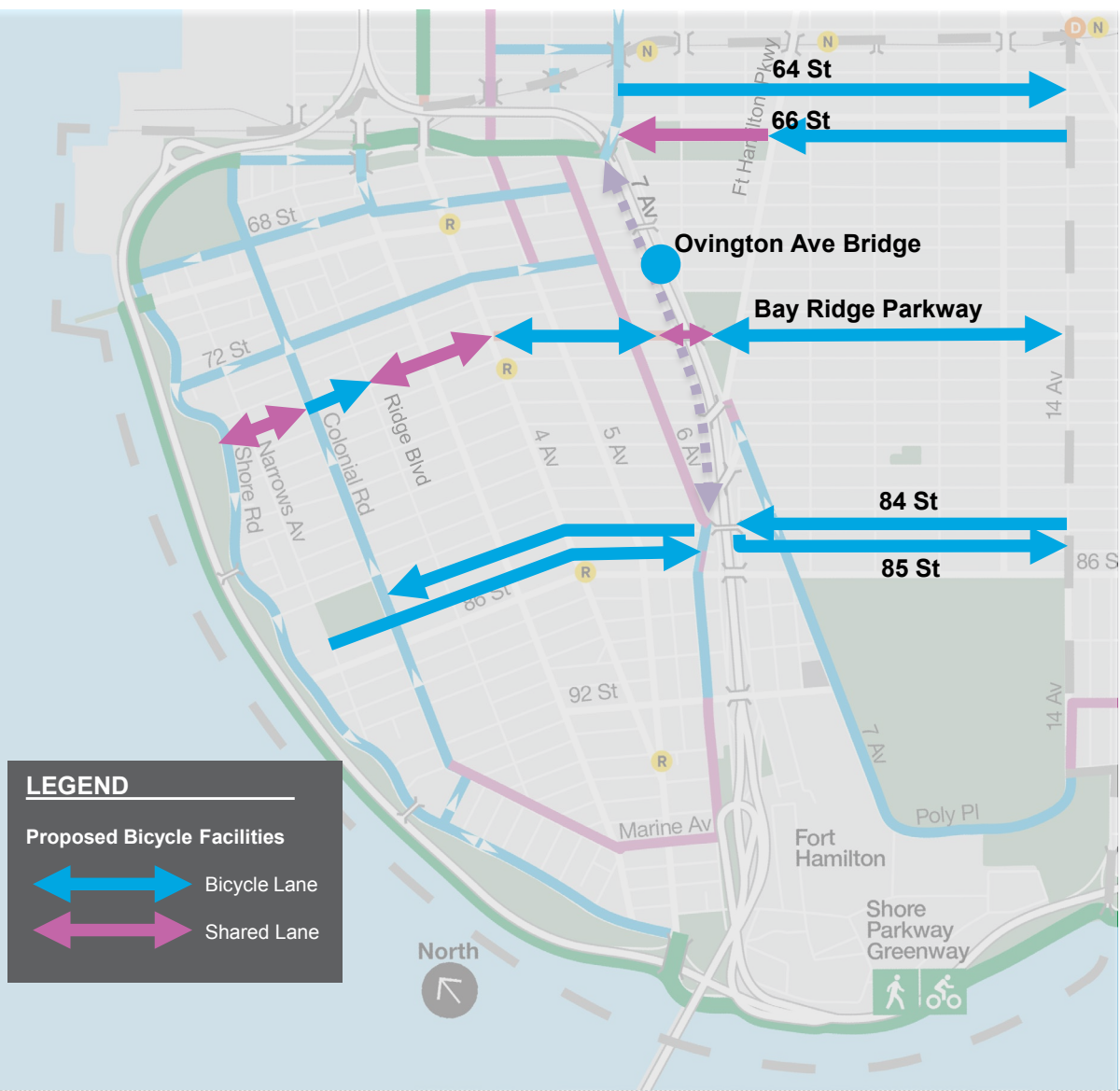
Requests for improved neighborhood access



Proposal

2

East-West Bicycle Routes



- Five new east-west bike routes
- Ovington Ave Bridge curbside lanes
- No parking changes
- No travel lane loss



Bay Ridge Pkwy

30 Foot-wide Streets: 64 St, 66 St, 84 St, 85 St

Existing



85 St

Proposed



Classon Ave, Brooklyn



Install bike lanes

- Provides dedicated space for cyclists

Bay Ridge Parkway



Install bike lanes

- Provides dedicated space for cyclists

Maintain all existing turn lanes

Ovington Ave Bridge



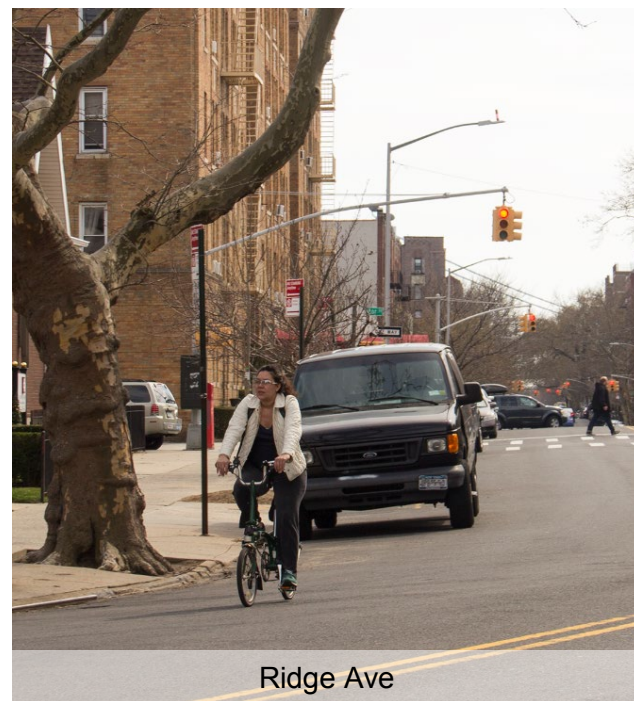
Install curbside bike lane

- Provides dedicated space for cyclists
- Organizes wide roadway
- Connects to 7 Ave project

North-South Bicycle Routes



- Four new north-south bike routes
- No parking changes
- No travel lane loss



3 Av, 79 St to Shore Rd

Existing



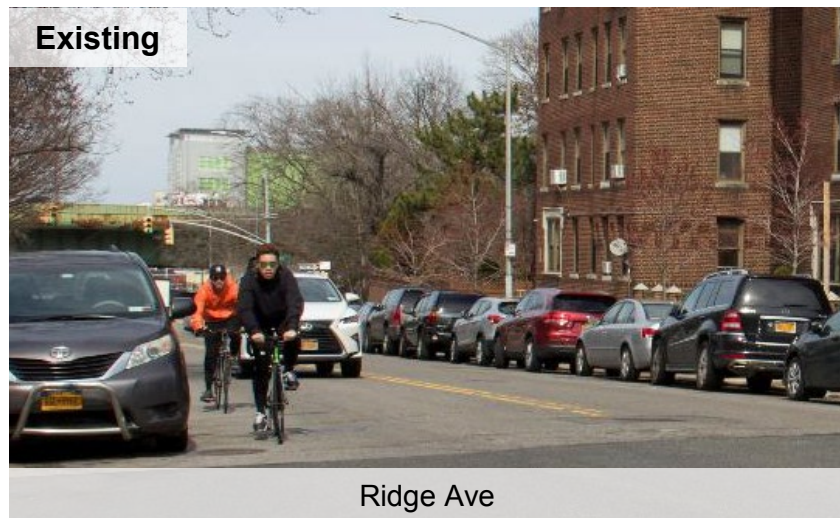
Proposed



Install bike lanes

- Provides dedicated space for cyclists

Ridge Blvd, 3 Ave (79 St to 68 St), 10 Ave, 11 Ave



Install one-way bike lanes

- Provides dedicated space for cyclists
- 10 and 11 Ave were concerns during the traffic safety town hall.

Leif Erikson Park path crossings

DOT will investigate potential improvements to Leif Erikson path crossings and work with the Parks Department to improve conditions.



Crossing at 3 Ave



Crossing at 4 Ave

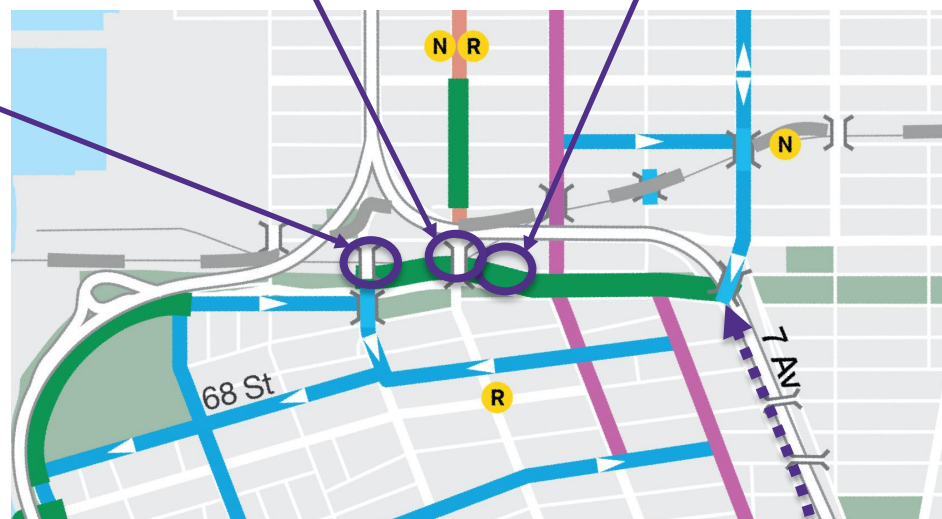


Crossing between 4 Ave and 5 Ave



Potential improvements

Flatbush Ave, Brooklyn



Network Proposal



Previously

- 7 Ave project

Bike Network Proposal:

- 5 new east-west bike routes
- 4 new north-south bike routes
- Ovington Ave bridge bike lanes
- No parking changes
- Maintain all travel lanes and turn lanes

Potential future projects that require further analysis:

- Improvements to Leif Ericson park crossings
- Protected lanes connecting to greenways and adjacent neighborhoods

Next Steps

Community board feedback

Proposed implementation - summer 2019

Additional summer outreach



THANK YOU!
Questions?



NYCDOT



nyc_dot



nyc_dot



NYCDOT