



Amsterdam Avenue Pedestrian & Bicycle Improvements, 135th to 139th Street

Community Board 9 Transportation Committee
June 4, 2026



Agenda

- Proposal Overview
- Background and Outreach
- Bicycle Infrastructure
- Street Seat Program
- Site Context and Proposal
- Operations and Maintenance
- Next Steps

Proposal Overview



Offset Bike Lane Crossings:
135th St

Bike Corrals and Curb Extensions:
136th St, 138th St,
139th St

Street Seat:
139th St

Background and Outreach

- Project initiated through conversations between City College and NYC DOT
- NYC DOT and City College to conduct pre-implementation outreach to businesses and other stakeholders this summer



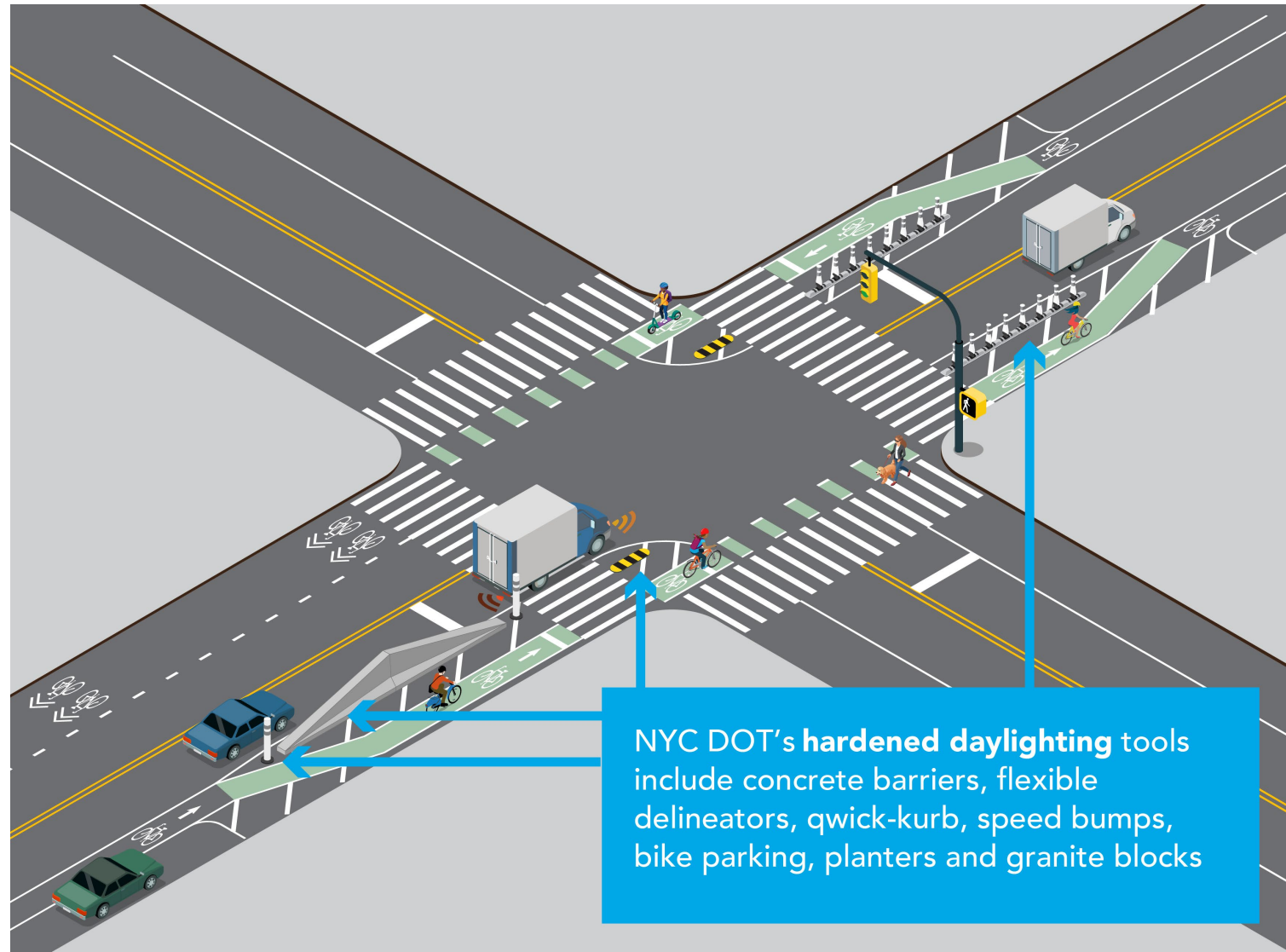
Bicycle Infrastructure Improvements



© NYC DOT

Offset Bike Lane Crossings

- Improve safety for cyclists and drivers at busy intersections
- Increase space and add hardened elements between bikes and vehicles
- Optimize visibility for drivers and cyclists
- Daylighting at corners



Bike Corrals

- Free, short term bike parking installed in the roadway
- Optimize pedestrian and cyclist safety
- Daylighting and shortened pedestrian crossings at corners



Street Seat Program



How It Works

- Request driven
- Community Board notification
- Typically installed along the curb, in the parking lane
- Varying design types
- Pedestrian space is permanent once markings are installed on asphalt (double white lines)



Benefits

- Expanded public space
- Transformation of parking spaces for people
- Optimize visibility for cars, bikes, and pedestrians
- Traffic calming
- Daylighting at corners



Standard Street Seat Design

- Use of epoxy gravel & other standard DOT elements
- Visually permeable edges
- Some vertical elements
- Moveable furniture



Red Hook Initiative Street Seat, Brooklyn 2024

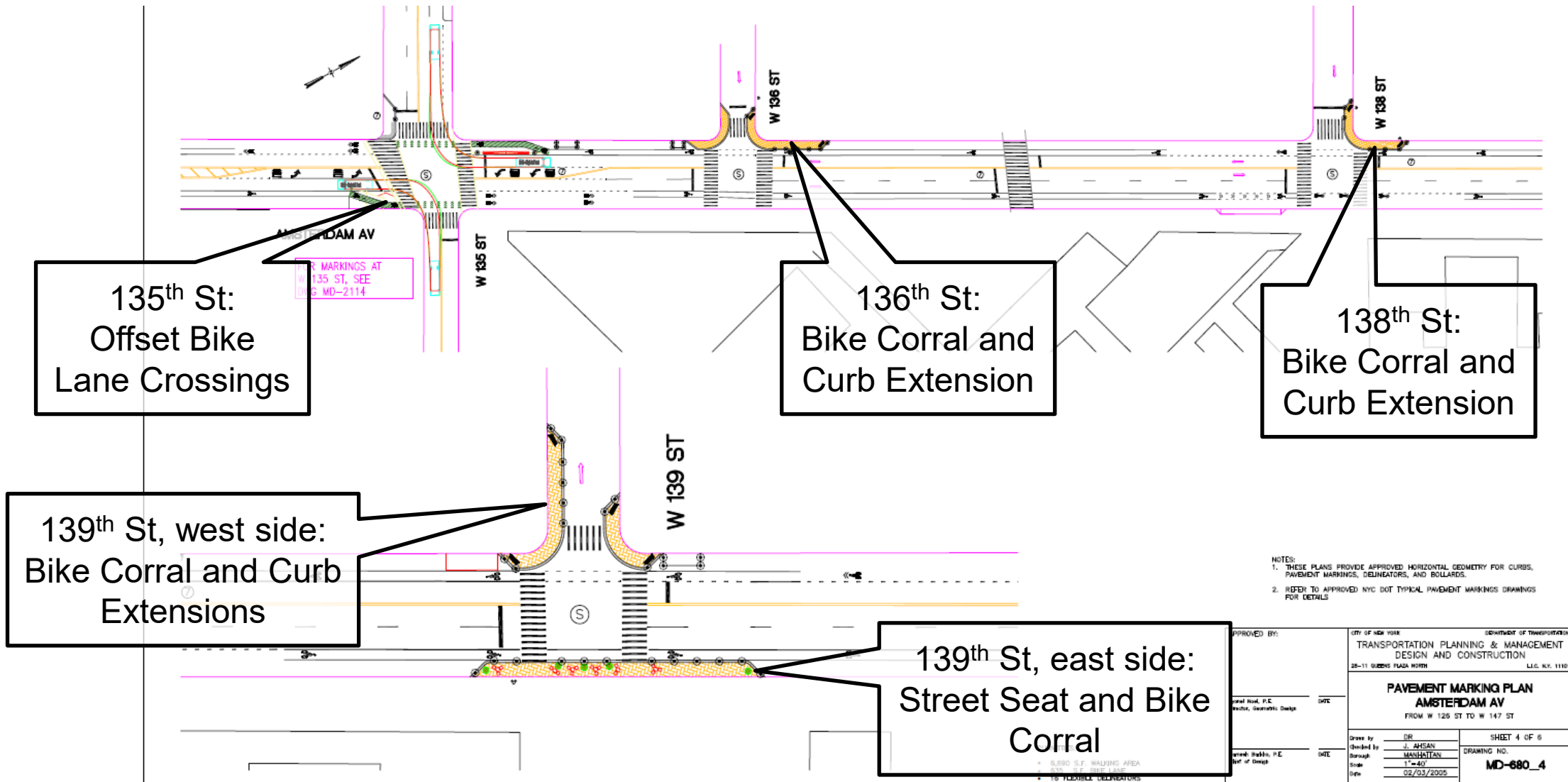
Design Elements





Site Context and Proposal

Project Proposal Overview



Existing Conditions - 135th St



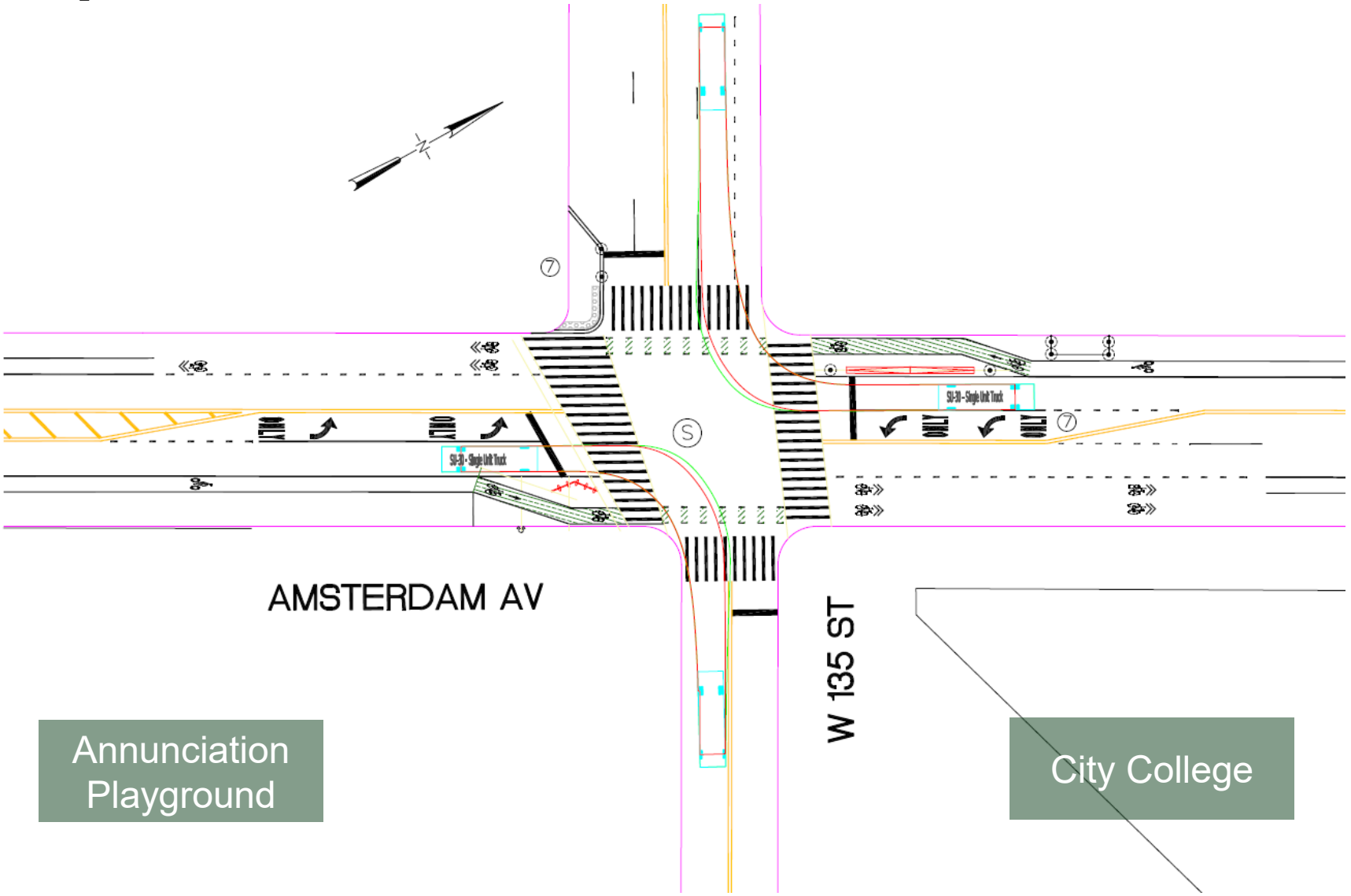
View looking north along Amsterdam Ave at 135th St

Existing Conditions - 135th St

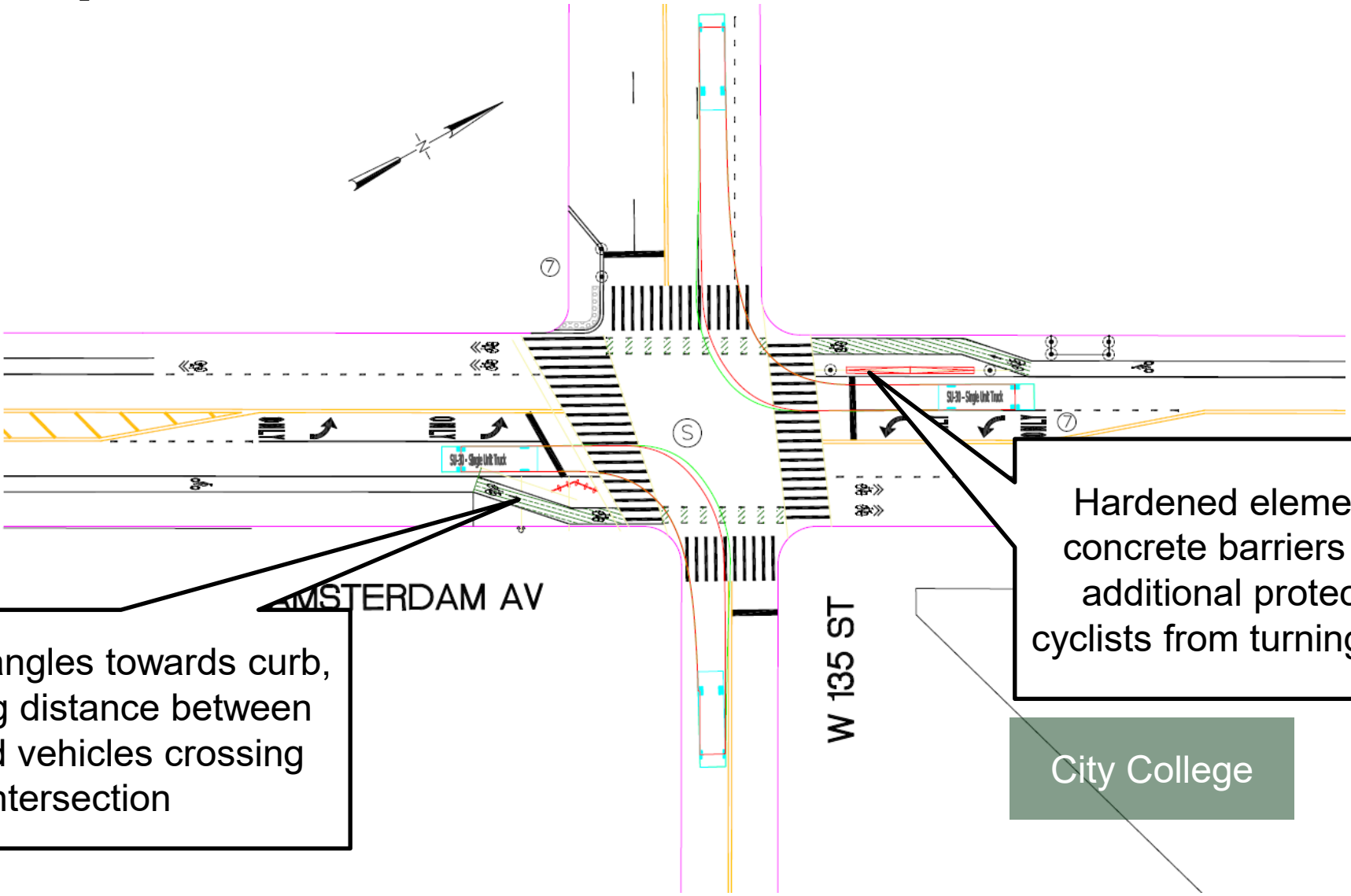


View looking south along Amsterdam Ave at 135th St

Project Proposal - 135th St



Project Proposal - 135th St



Bike lane angles towards curb, increasing distance between bikes and vehicles crossing intersection

Hardened elements like concrete barriers provide additional protection to cyclists from turning vehicles

City College

Existing Conditions - 136th to 138th St



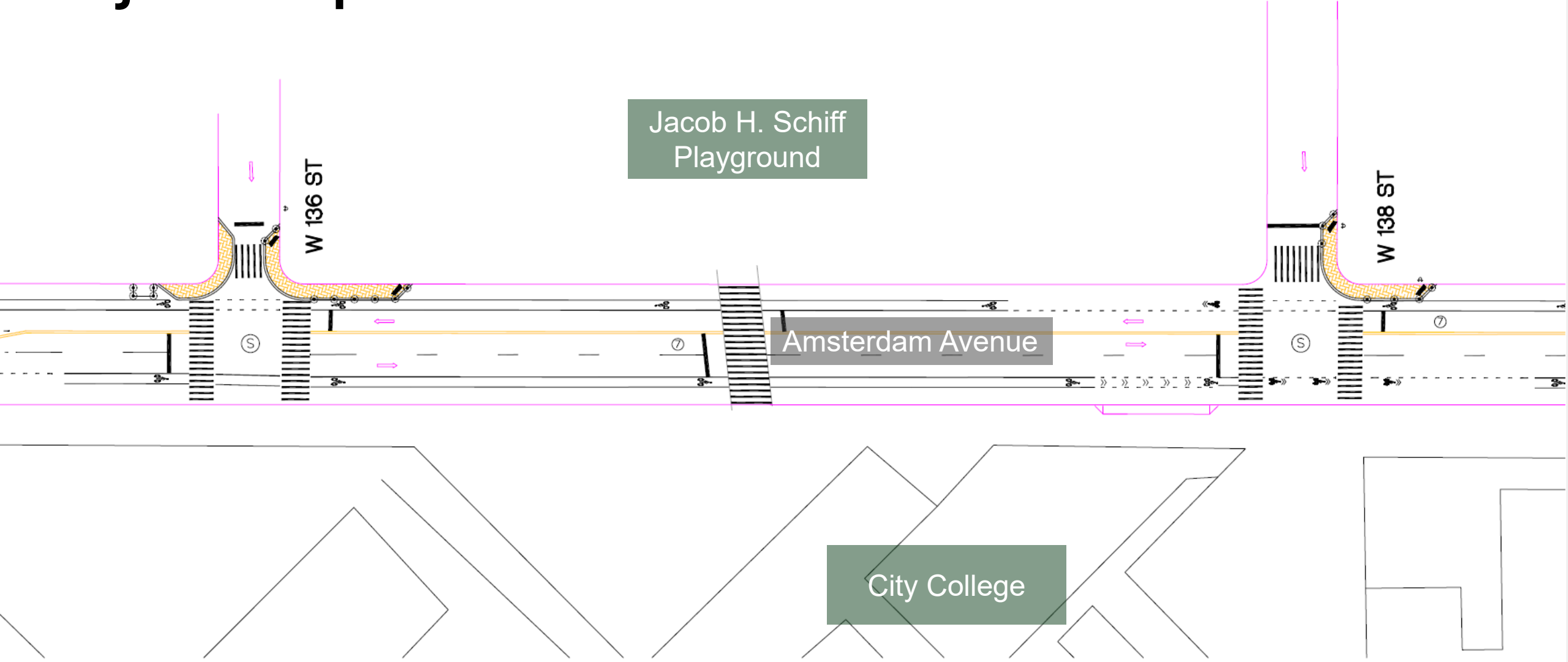
View looking northwest along Amsterdam Ave at 136th St

Existing Conditions - 136th to 138th St

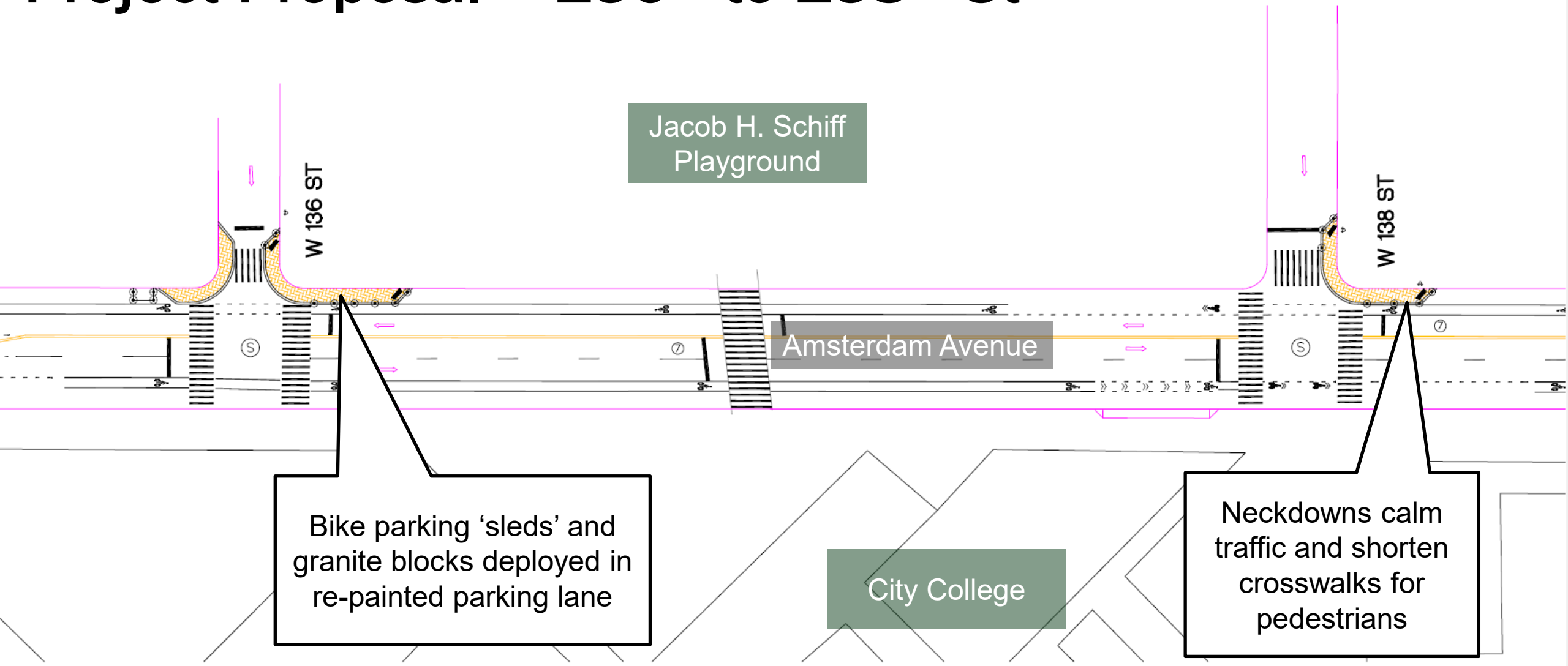


View looking northwest along Amsterdam Ave at 138th St

Project Proposal - 136th to 138th St



Project Proposal - 136th to 138th St



Jacob H. Schiff
Playground

Amsterdam Avenue

Bike parking 'sleds' and
granite blocks deployed in
re-painted parking lane

City College

Neckdowns calm
traffic and shorten
crosswalks for
pedestrians

Existing Conditions – 139th St



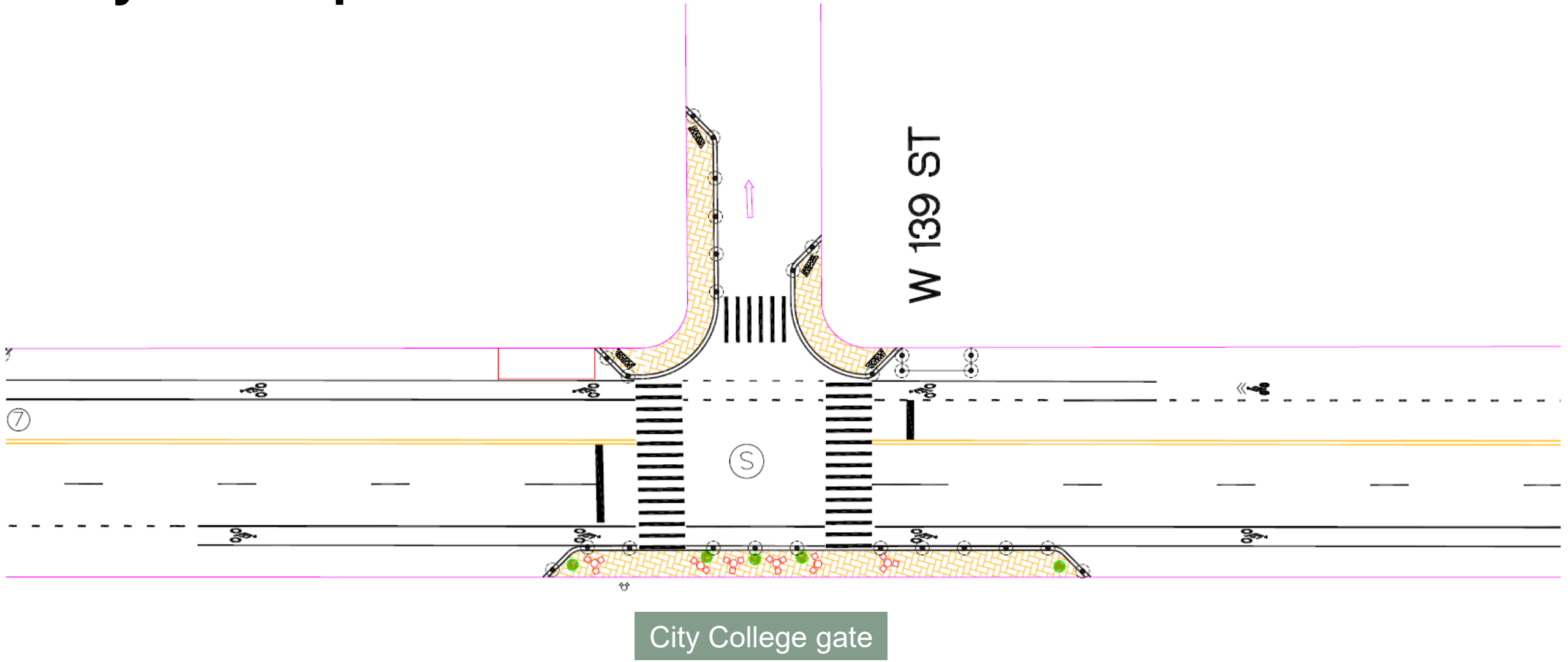
View looking northeast on
Amsterdam Ave at 139th St

Existing Conditions – 139th St



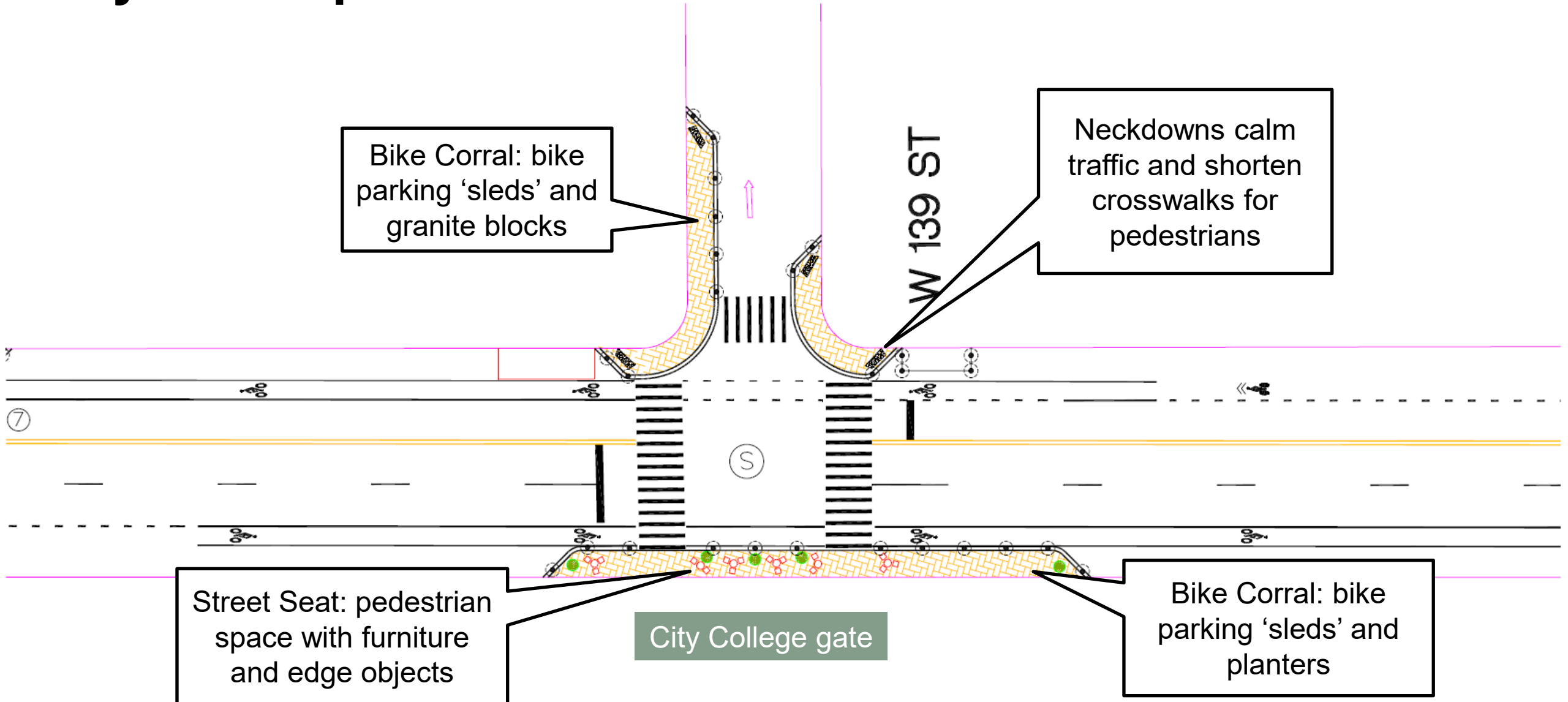
View looking west down 139th St
at Amsterdam Ave

Project Proposal - 139th St



City College gate

Project Proposal - 139th St



Bike Corral: bike parking 'sleds' and granite blocks

Neckdowns calm traffic and shorten crosswalks for pedestrians

Street Seat: pedestrian space with furniture and edge objects

City College gate

Bike Corral: bike parking 'sleds' and planters

Operations and Maintenance



Street Seat Operations

- All seating open to public
- No alcohol or smoking allowed
- No commercial activity
- Moveable furniture deployed/secured by partner
- Partner responsible for maintenance via an agreement with NYC DOT



Streetscape Maintenance Partner

- City College will sign a maintenance agreement and be the point of contact with NYC DOT.
- City College will perform daily maintenance including sweeping, litter picking, and furniture operations, as well as maintaining planters and other tasks as needed.



The City College
of New York

Next Steps & Project Schedule

2025

Summer/Fall	City College and NYC DOT coordination begins
-------------	--

2026

Winter	NYC DOT project development
--------	-----------------------------

June 4	CB 9 Transportation Committee presentation
--------	--

Summer	NYC DOT and City College conduct pre-implementation outreach
--------	--

Fall	Proposed implementation and operations begin
------	--

Thank You Questions?



© NYC DOT