

Safe Streets for Seniors

Lower East Side

Proposed Improvements



New York City
Department of Transportation
Janette Sadik-Khan, Commissioner

September 10, 2008

Focus Area & Crash History



Early Action Improvements

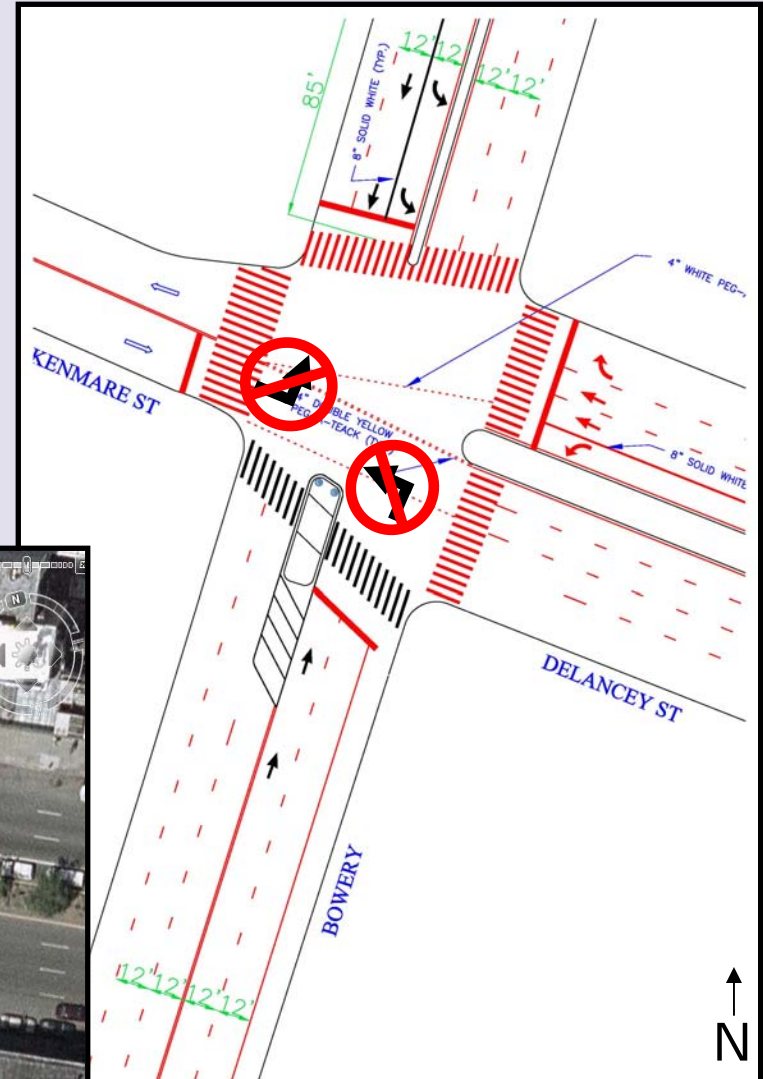
Implemented July 2008

- All signalized intersections (43) timed for seniors at 3 ft/sec walking speed
- Seniors given more time to cross the major street at 26 of the 43 intersections
- LPI approved for Delancey Street & Essex Street (pending)



Bowery and Delancey Street

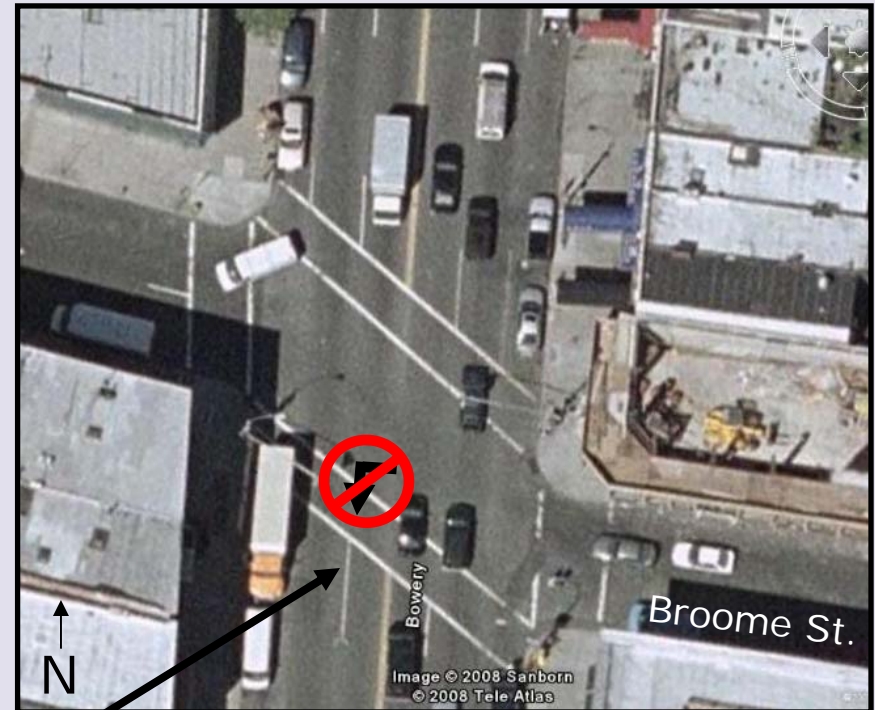
- Install pedestrian refuge island in south crosswalk
 - Shortens pedestrian crossings
- Ban NB left turn from Bowery to Kenmare Street
 - Reduces pedestrian/vehicular conflict
 - 14 vph during weekend peak
 - 1 truck during AM peak
- Ban EB left turn from Kenmare Street onto NB Bowery
 - 11 vph in AM peak and 5 vph in PM peak
- Add left turn phase for WB Delancey
- Long term- construct neckdown on SE corner



Existing
Conditions

Bowery and Broome Street

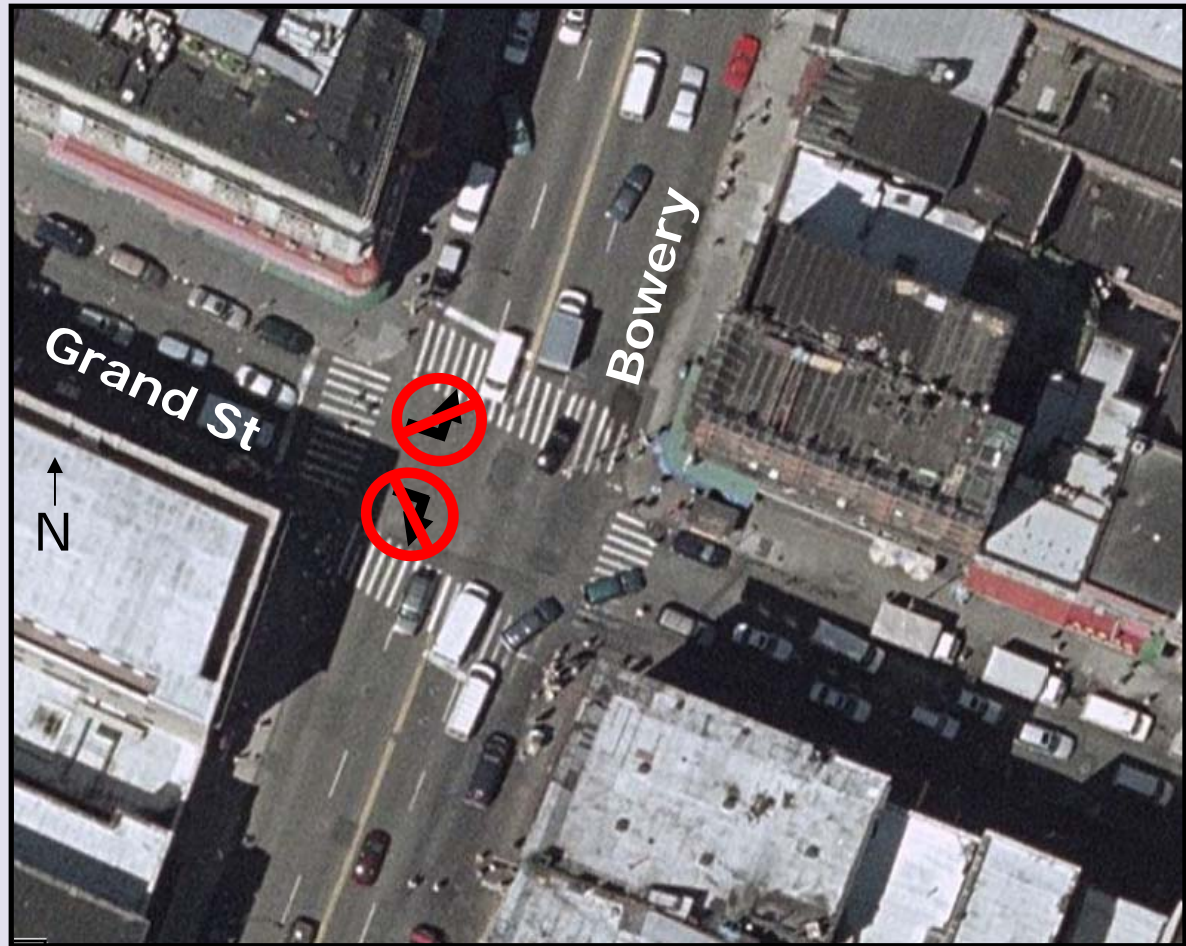
- Ban left turns from Broome St. onto SB Bowery
 - Eliminates dangerous turns into skewed crosswalk (83 vph)
 - Helps to process heavy WB traffic on Broome



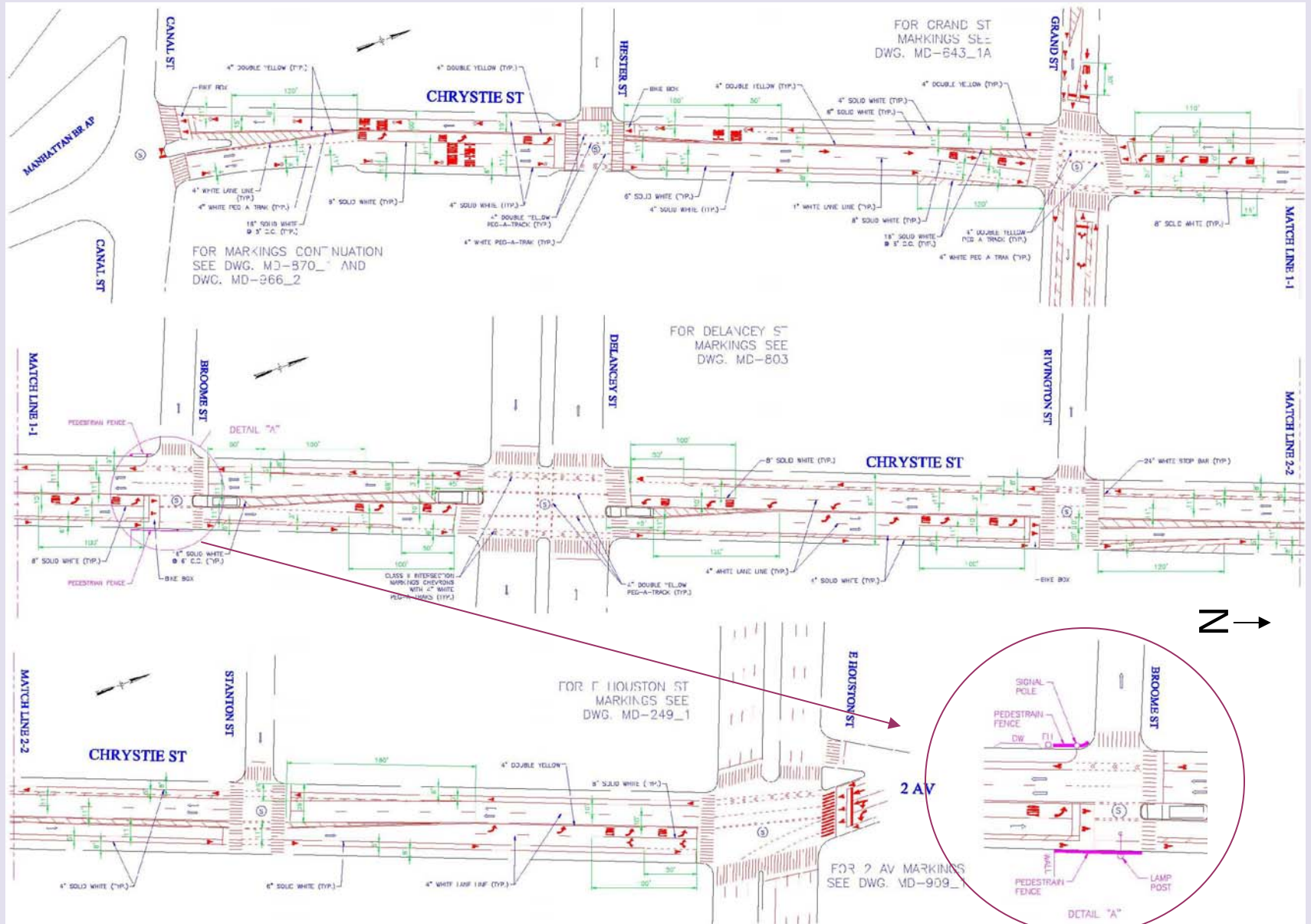
Senior fatality occurred when WB vehicle made a left turn onto SB Bowery and struck pedestrian in crosswalk who was crossing with the signal

Bowery and Grand Street

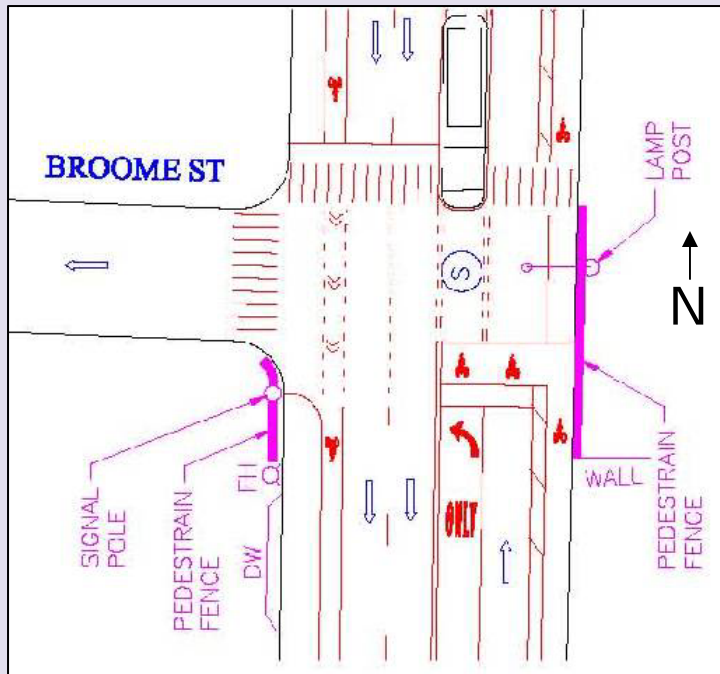
- Ban left and right turns from EB Grand Street onto Bowery
- Heavy pedestrian volumes limit ability of vehicles to turn, creating congestion and conflicts



Chrystie Street Complete Street



Chrystie Street at Broome Street



- Changes to Intersection
 - Remove South crosswalk
 - Install pedestrian fencing on SW corner and East curb
 - Provide left turn bay with turn signal
 - Install pedestrian refuge island in North crosswalk



south crosswalk facing east

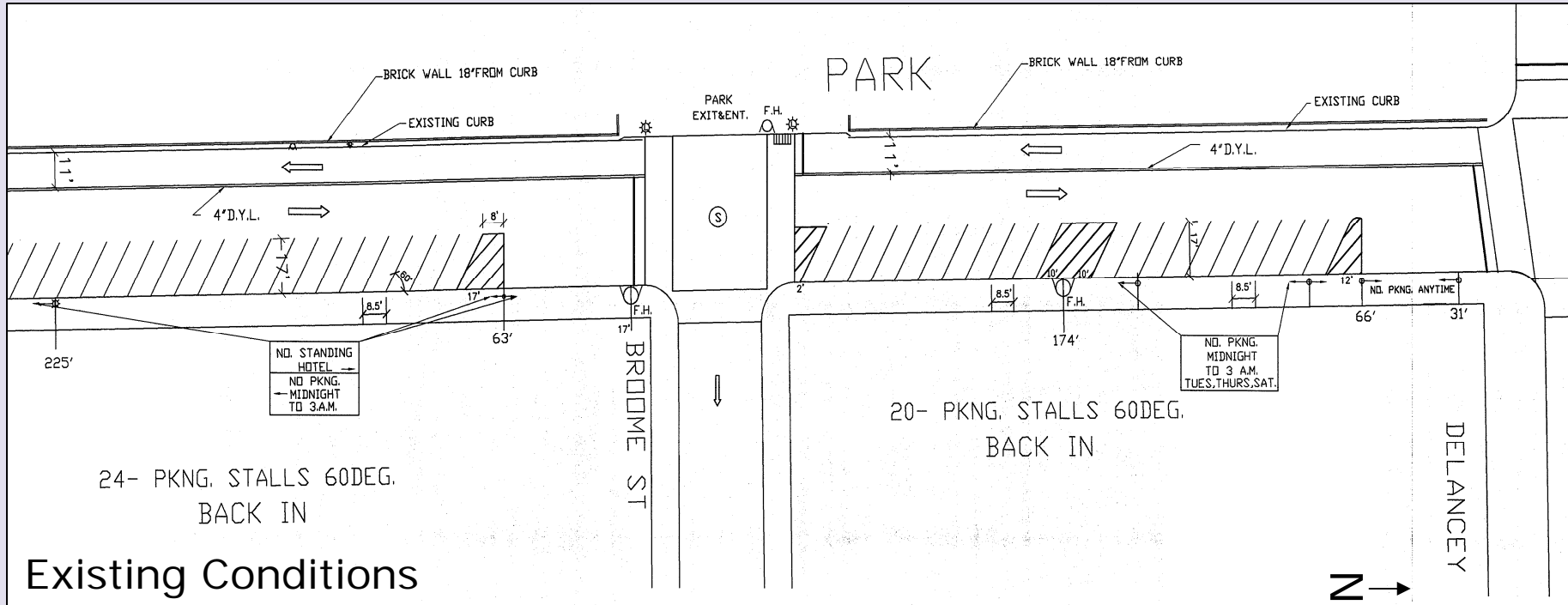
Fatality occurred in existing south crosswalk as NB left turning vehicle struck pedestrian



Facing west

Forsyth Street

Between Grand and Delancey Streets



Existing Conditions

- Existing - Two-way with 1 moving lane in each direction and angle parking on east curb
- Currently one-way NB north of Delancey St. and one-way SB south of Grand St

Forsyth Street Between Grand and Delancey Streets



Pedestrians walking on west curb with no sidewalk

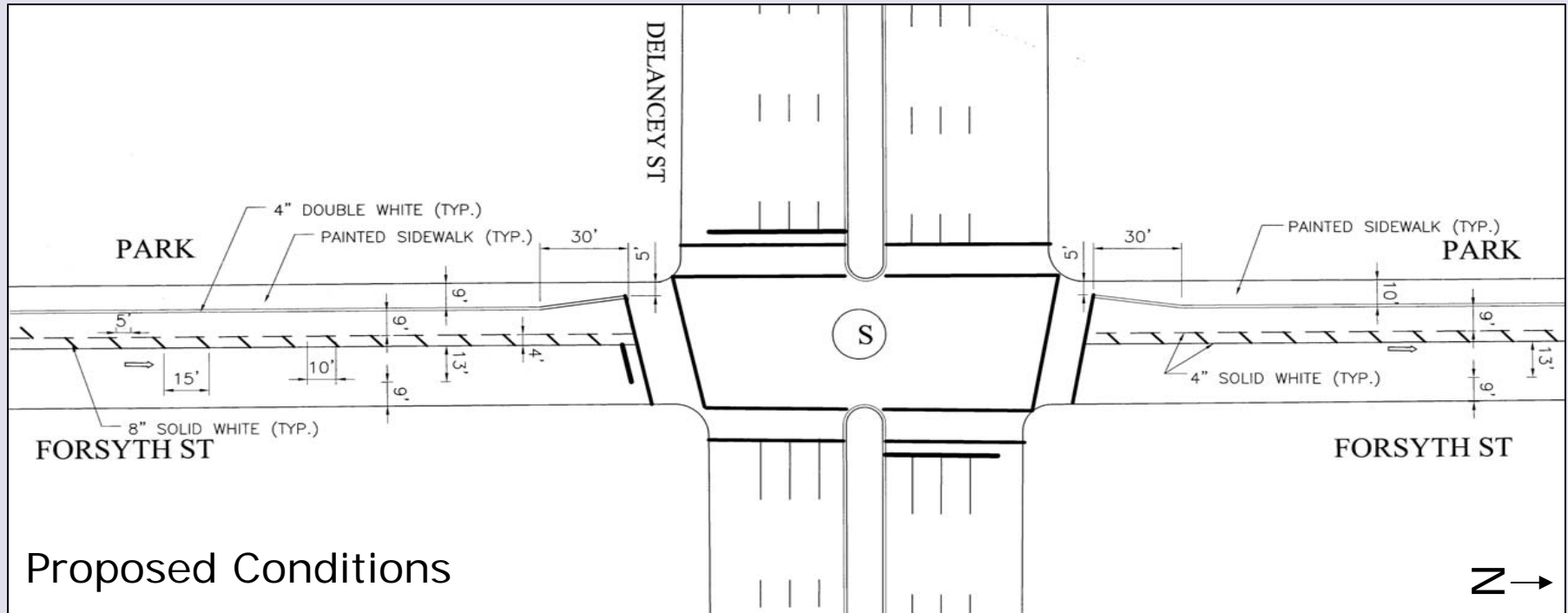


Double parking



Forsyth Street

Between Grand and Delancey Streets



Proposed Conditions

- Request for one-way made by CB 3 in January 2004
- Proposed – Parallel parking lane on east curb, one NB 13' moving lane, 4' channelized buffer, 9' floating parking lane and 10' painted pedestrian space along west curb
- Consistent design from Houston Street to Hester Street

Rutgers Street

Between Cherry & Madison Streets

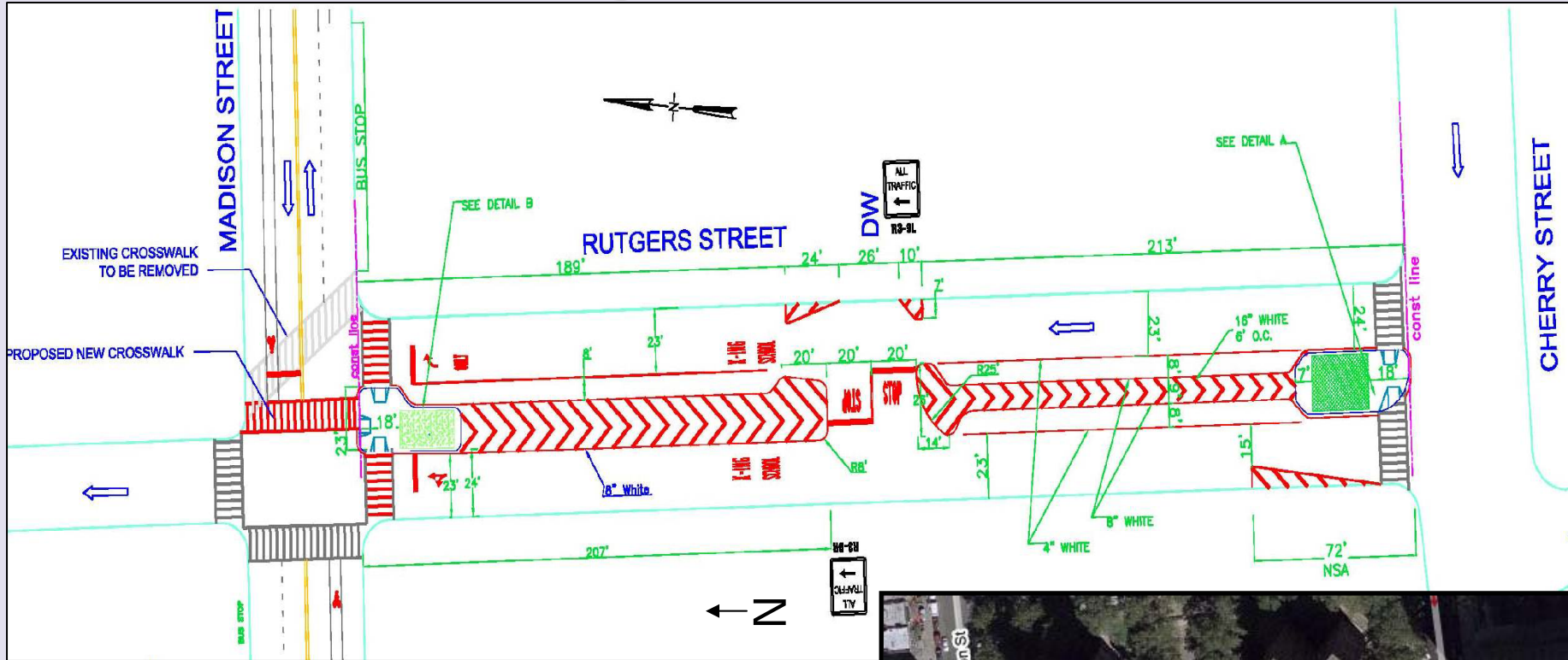
■ General Concepts and Improvements

- Calm traffic
- Provide pedestrian refuge space
- Align through movement on Rutgers Street
- Shorten crossing distance for pedestrians

■ Physical Changes to Roadway

- Painted median with slip ramp
- Parallel parking along median for additional parking spaces
- Green refuge islands

Rutgers Street



Division/Canal/Ludlow Streets

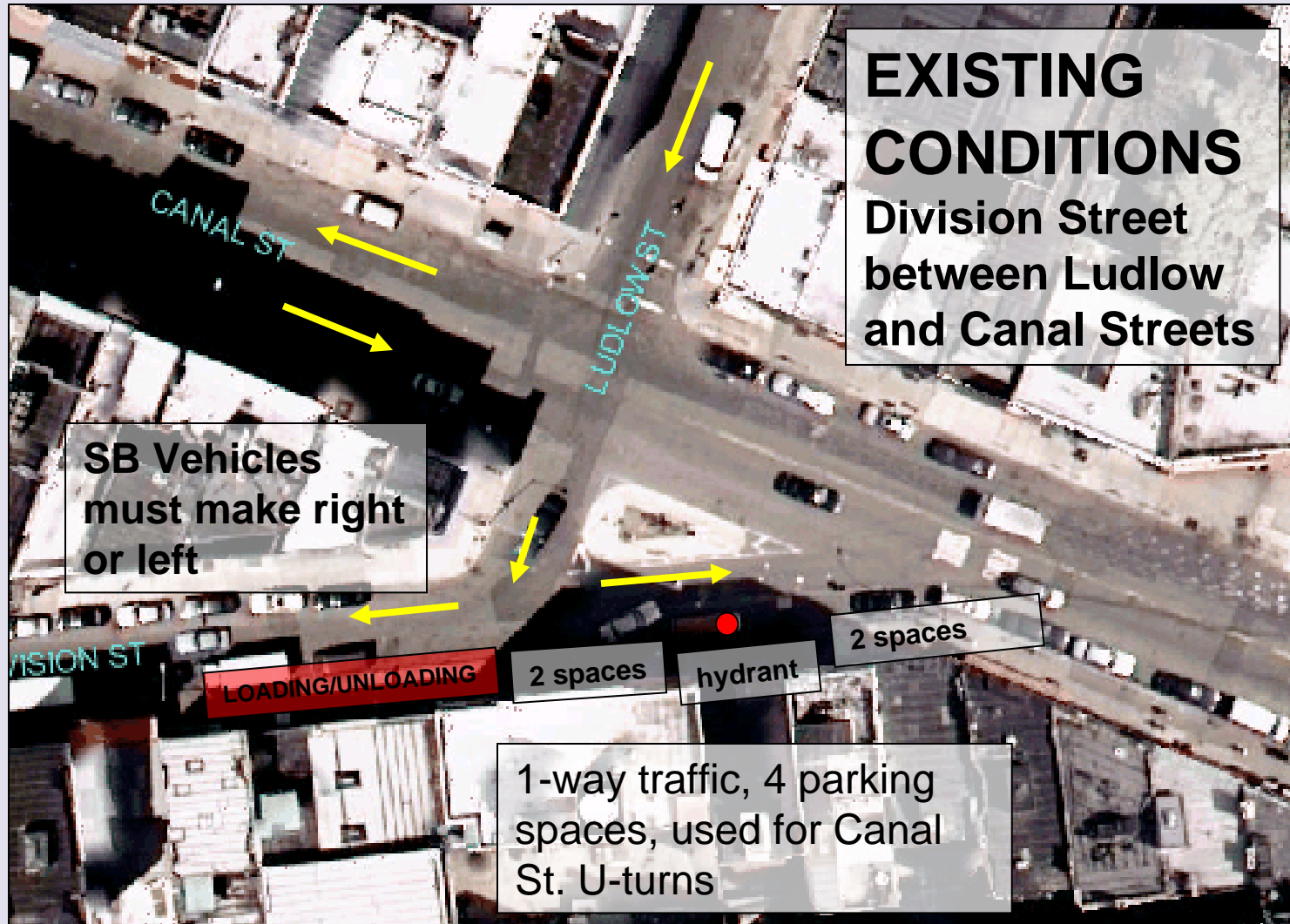
■ General Concepts and Improvements

- Close EB Division Street between Ludlow and Canal Streets
- Restrict unnecessary one way access
- Add pedestrian space
- Possible Green Street

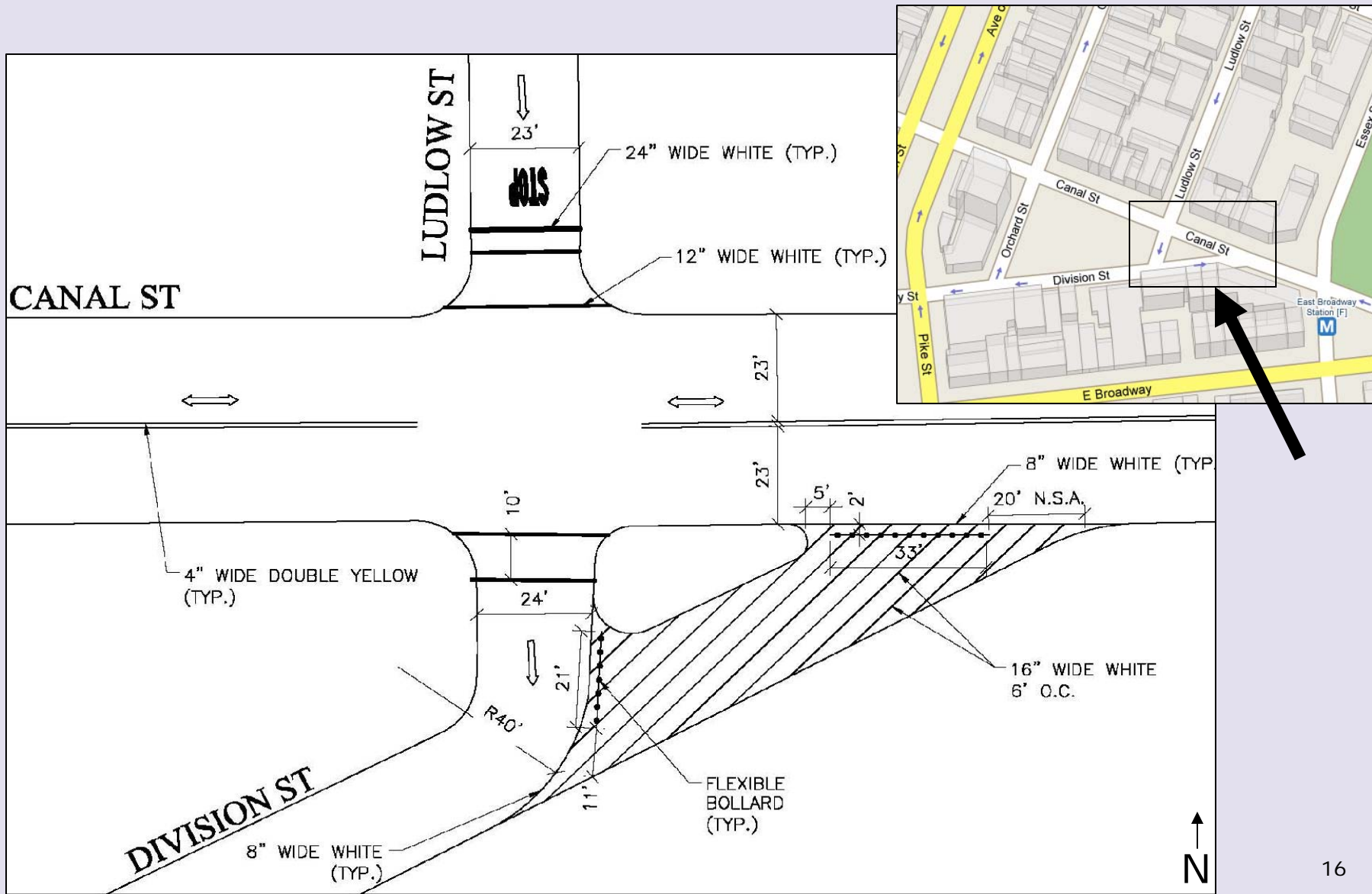
■ Physical Changes to Roadway

- Install flexible bollards to delineate pedestrian space
- Install crosswalk across Division Street

Division/Canal/Ludlow Streets



Ludlow, Canal and Division Streets



Timeline

Lower East Side Senior Area Timeline								
Tasks	2008						FUTURE	
	JULY	AUG	SEPT	OCT	NOV	DEC	2009	2010
Early Action Items								
Signal Timing for Seniors 3ft/Sec								
Chrystie Street Bike Lanes								
Chrystie Street Markings								
Chrystie Street Signage								
Chrystie Street Pedestrian Refuge Islands								
Short Term Improvements								
Ban Left turns at Broome and Bowery								
Ban turns at Grand and Bowery								
Signals - LPI at Delancey and Essex								
Forsyth - One way Conversion								
Forsyth - Markings: Hester to Houston								
Forsyth - Complete Street south of Canal								
Division/Ludlow/Canal pedestrian space								
Construction								
Rutgers Street islands								
Island at Delancey & Bowery								
Long Term Improvements								
Construct Forsyth Street sidewalk								
Neckdown at Bowery and Delancey								
Build out Rutgers Street pedestrian space								