



8th Avenue – 38th St to 51st St

Presentation to Community Board 4

July 20th, 2022



Project Background



Project Area and Background

8th Avenue – 38th St to 51st St

- Key corridor connecting pedestrians to Penn Station and PABT
- Commercial, office and entertainment land uses near major subway stops


Project Background:

- Phase I expanded the sidewalk from 38th St to 43rd St
- Phase II expanded the sidewalk from 31st St to 38th St
- Pedestrian crowding still exists north of 43rd St



 Phase III – 43rd to 51st St

 Phase II – 31st St to 38th St

 One Block – 42nd to 43rd (2017)
Phase I – 38th to 42nd St (2019)

8th Avenue Safety Data

Vision Zero Priority Corridor

- Pedestrian severe injuries at 43rd, 44th, 47th, 49th, and 50th Streets
- Cyclist fatality at 45th Street and severe injury at 50th Street

8th Avenue –43rd St to 51st St

Injury Summary, 2016-2020 (5 years)

	Total Injuries	Severe Injuries	Fatalities	KSI
Pedestrian	69	13	0	13
Bicyclists	22	1	1	2
Motor Vehicle Occupant	53	2	0	2
Total	144	16	1	17

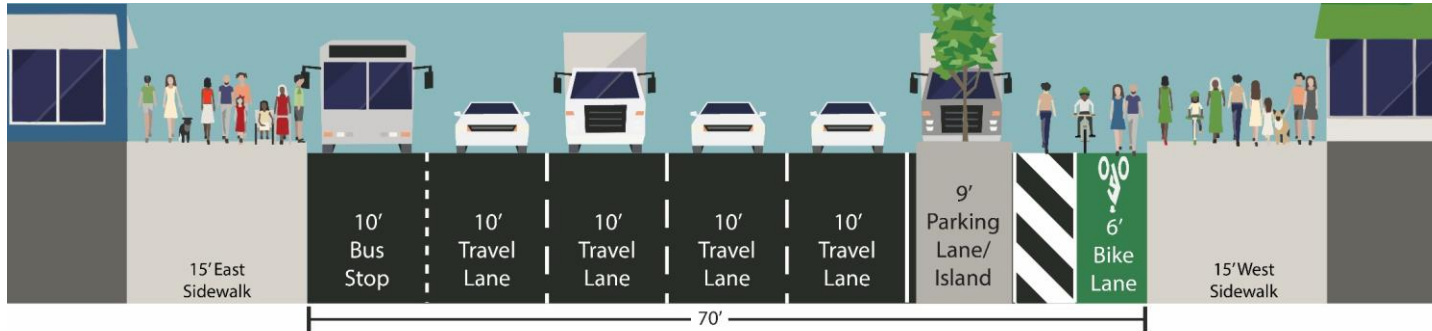
Fatalities – 2016 to 2020 : 1

Existing Conditions

2

Existing Block Configuration

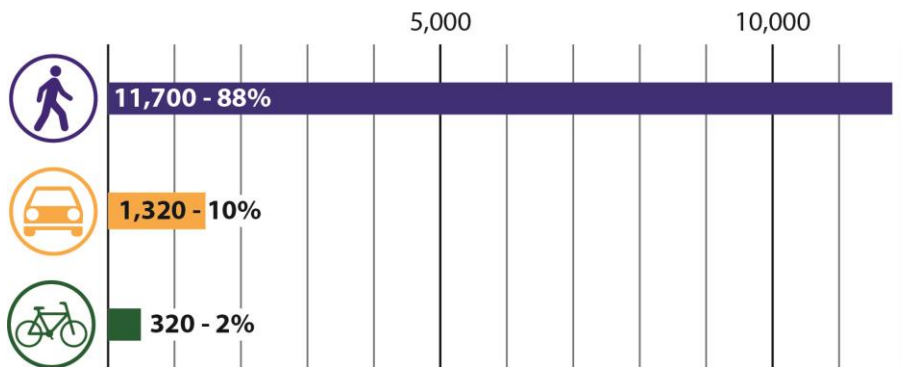
- 15' sidewalks
- 4 general travel lanes
- Parking-protected bike lane
- Two parking/loading lanes - mix of bus stops, hotel loading zones, and 3 hour metered commercial loading/parking



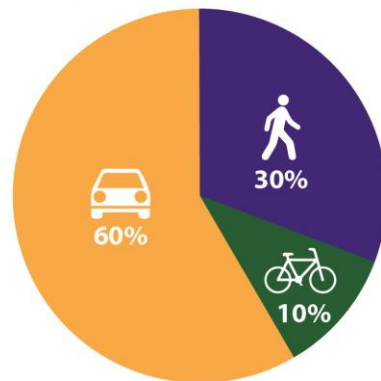
Volume and Space Comparison

- Pedestrians account for **88%** of roadway users (pre-pandemic)
- June 2022 pedestrian volume was 7,360 or **82%** of users
- High pedestrian volumes and small amount of road share results in people walking in curbside lanes

8th Avenue Modeshare (PM Peak Hour)



Existing 8th Avenue Roadshare

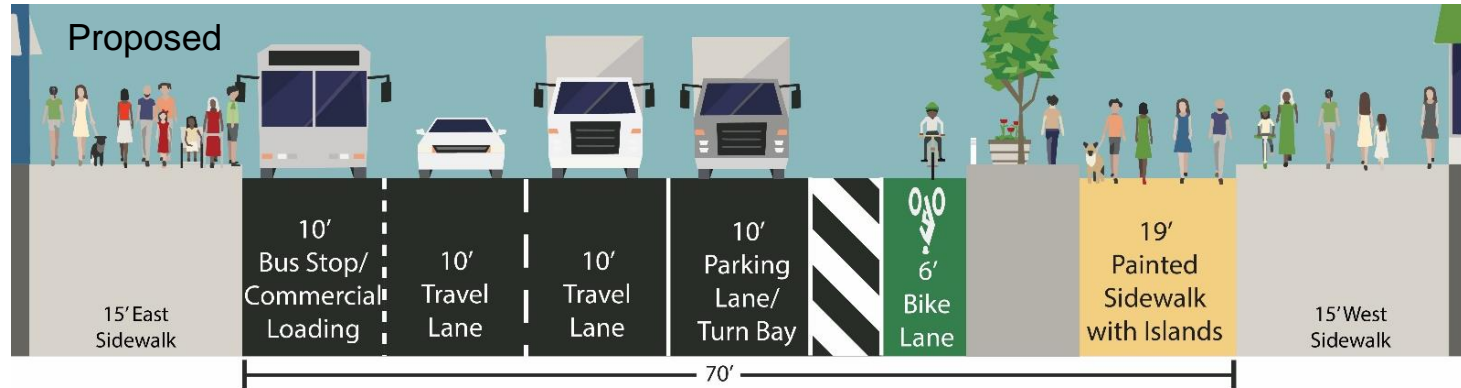
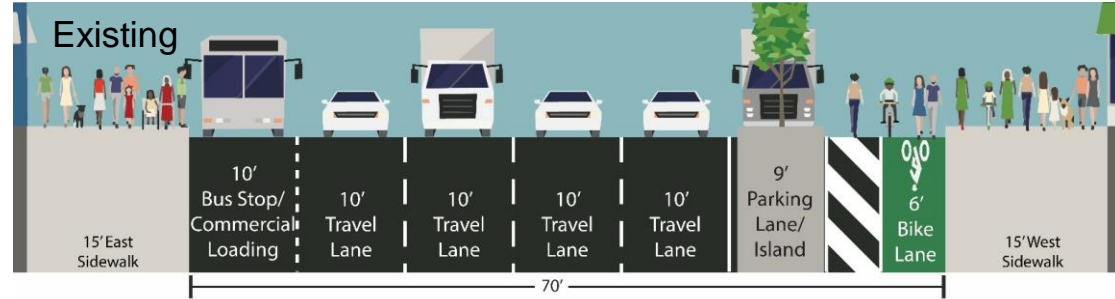


Project Proposal

3

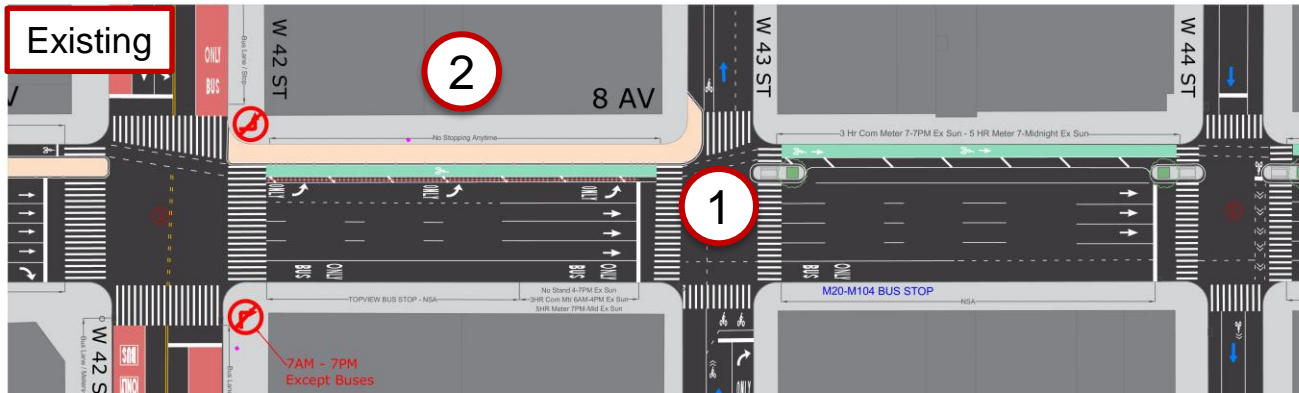
Typical Proposed Block Configuration

- 19' painted sidewalk extension on west curb
- Parking and/or lane divider protected bike lane
- Two general travel lanes
- Left turn lanes as needed
- Extend meter regulation to midnight to match late night land use

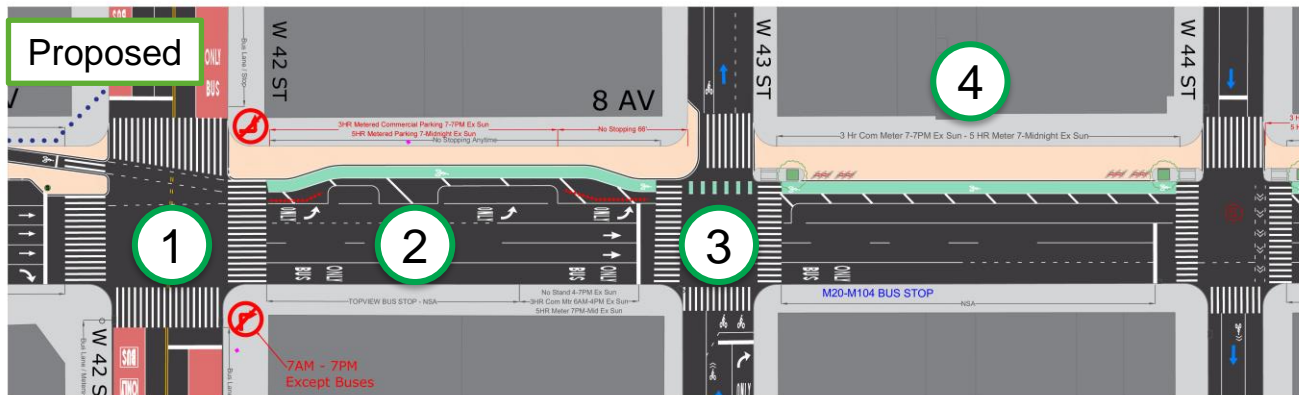


8th Ave - 42nd St to 44th St

- 1 Existing Split Phase Left turn
- 2 Existing Painted Sidewalk



- 1 Additional pedestrian space on NW corner, adjusted taxi boarding island
- 2 Proposed commercial loading
- 3 Bike lane transition
- 4 Proposed sidewalk expansion

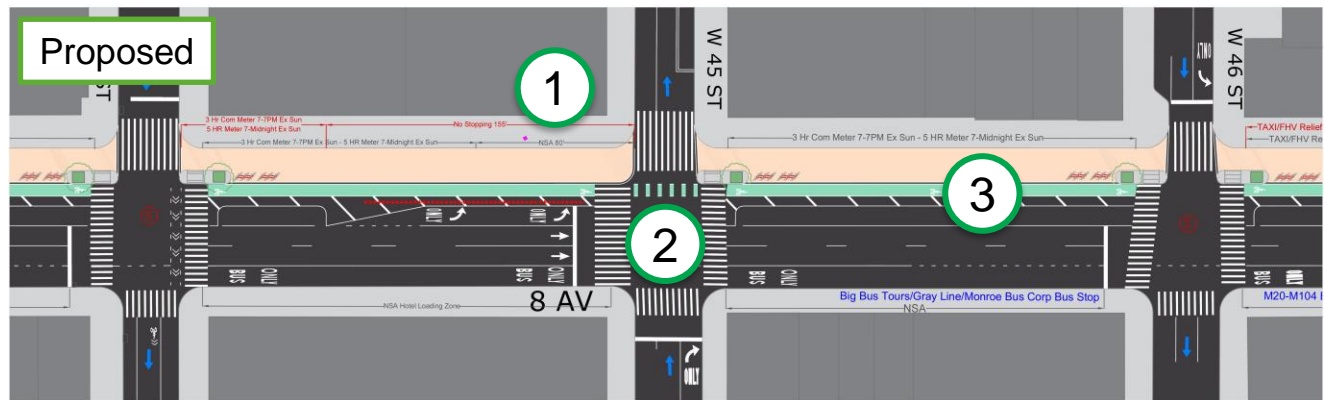


8th Ave - 44th St to 46th St

- 1 Existing Offset Crossing

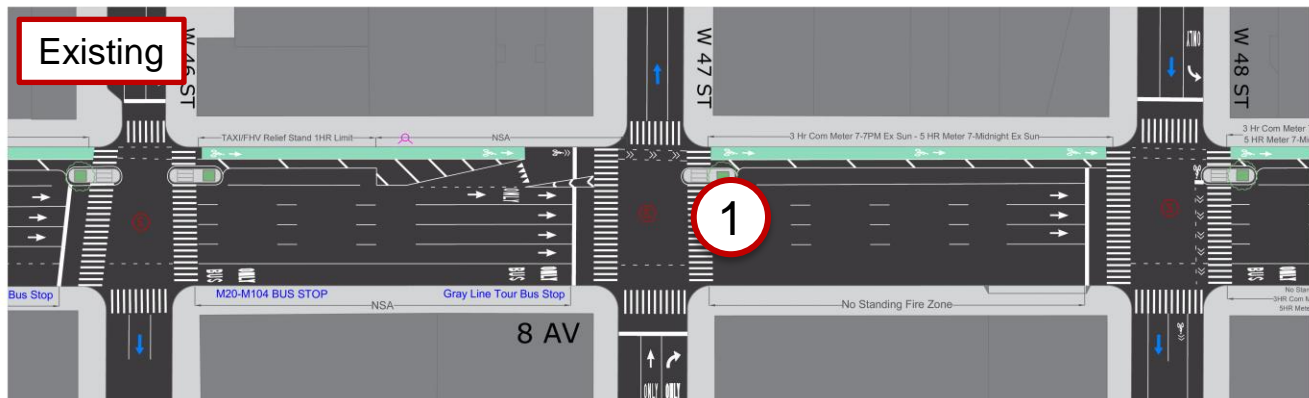


- 1 Proposed sidewalk expansion
- 2 Proposed split phase left turn
- 3 Maintained floating parking/loading lane

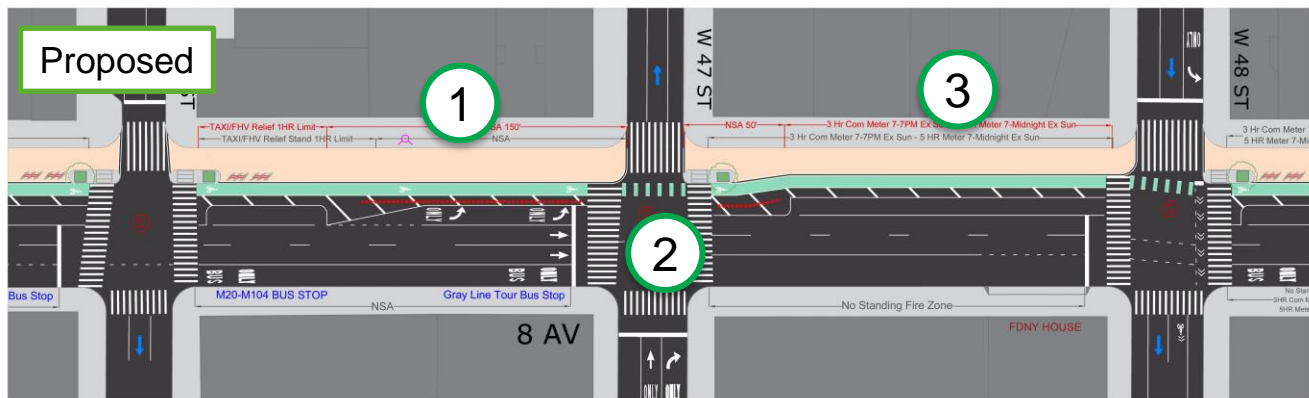


8th Ave – 46th St to 48th St

1 Existing Mixing Zone



- 1 Proposed sidewalk expansion
- 2 Proposed split phase left turn
- 3 Maintained floating parking/loading lane



8th Ave –48th St to 50th St

1 Existing Mixing Zone

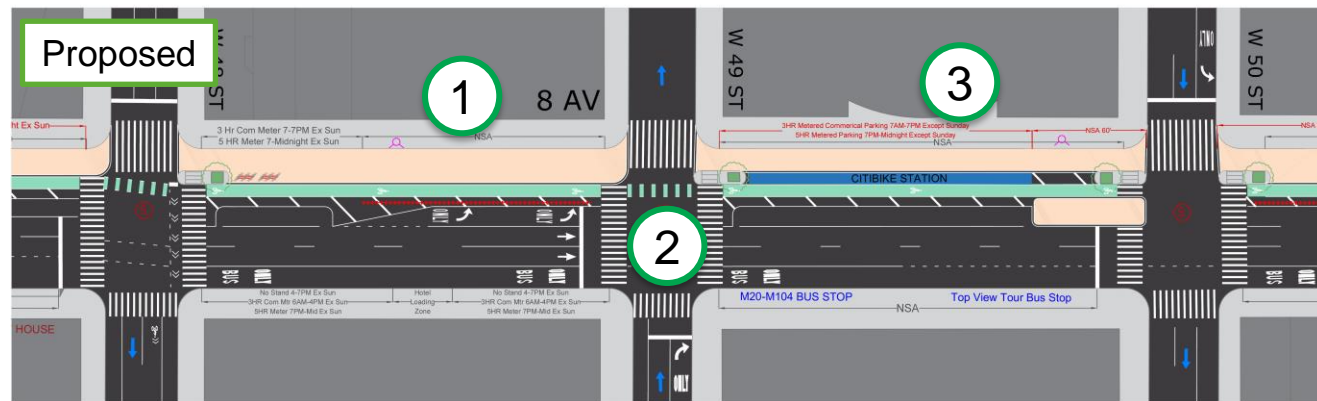
2 Existing Citibike Station



1 Proposed sidewalk expansion

2 Proposed split phase left turn

3 Install floating commercial loading lane, maintain Citibike station

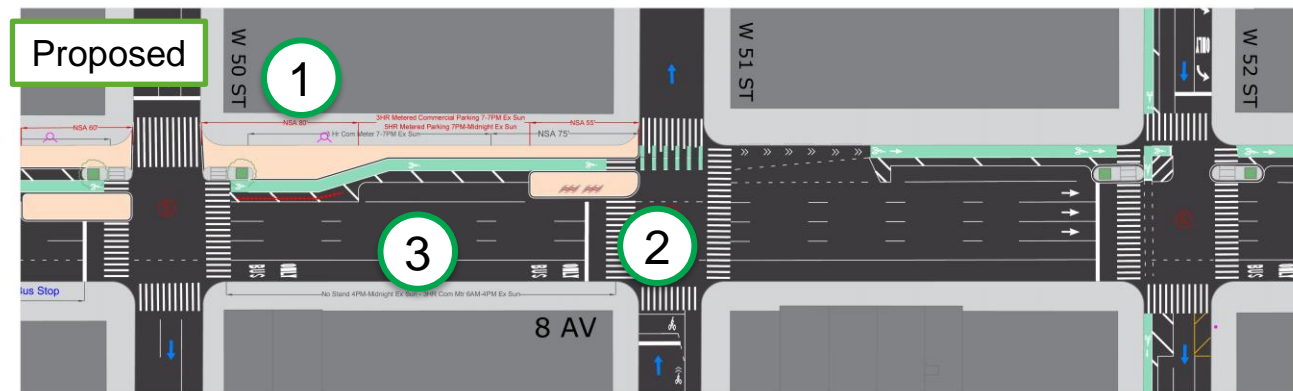


8th Ave – 50th St to 52nd St

- 1 Existing Mixing Zone



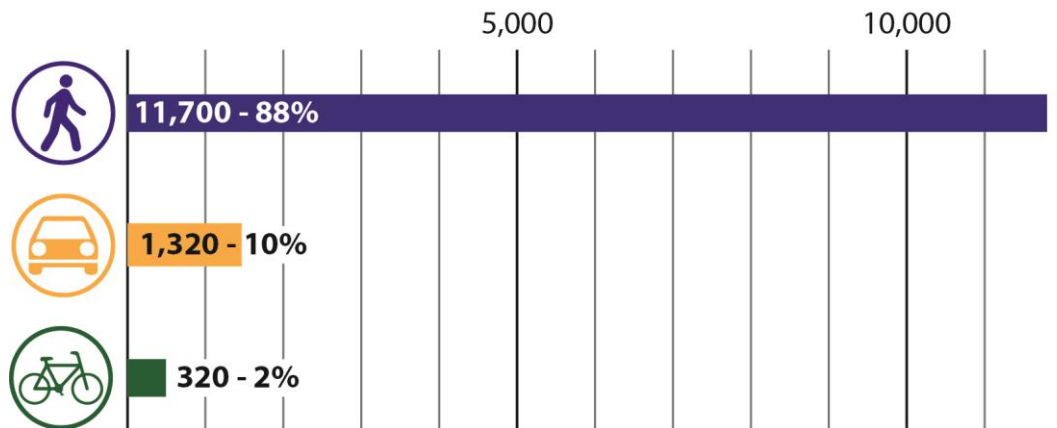
- 1 Proposed partial sidewalk expansion
- 2 Proposed offset crossing
- 3 Maintain floating commercial loading lane



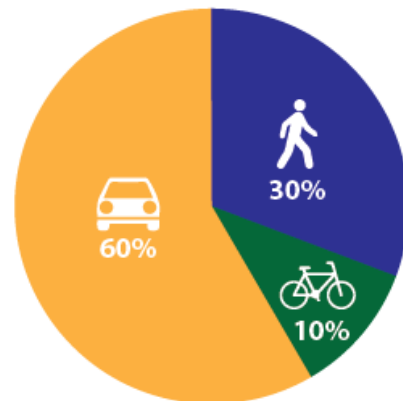
Proposed Space Comparison

- Increased sidewalk space (20%)
- Clear bike lane

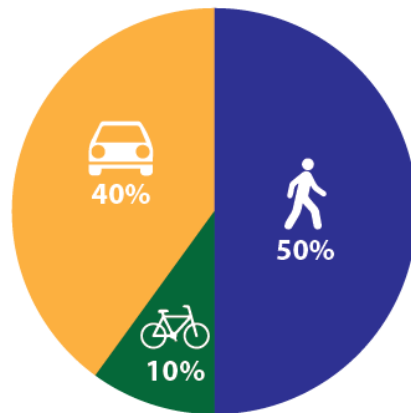
8th Avenue Modeshare (PM Peak Hour)



Existing 8th Avenue Roadshare



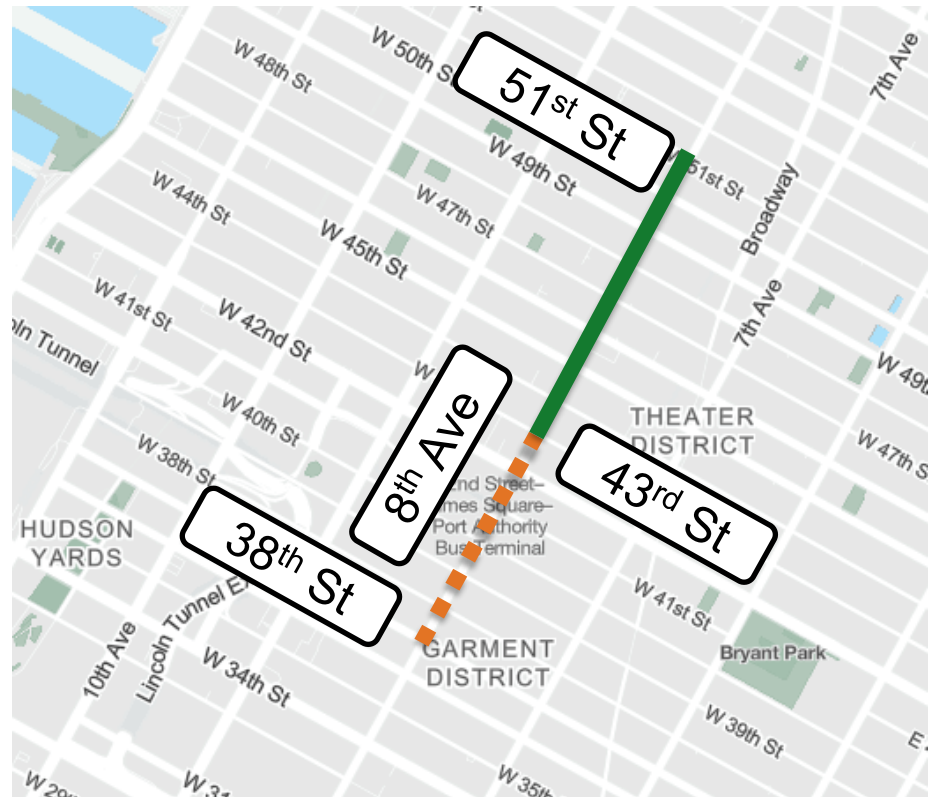
Proposed 8th Avenue Roadshare



Project Timeline

8th Avenue – 38th St to 51st St

- 43rd St – 51st St currently milled, to be repaved by end of July
- Updated markings to be installed in August-September
- Minor updates to Phase I design planned in coordination with repaving 8th Ave 38th St to 43rd St (tentative 2023)

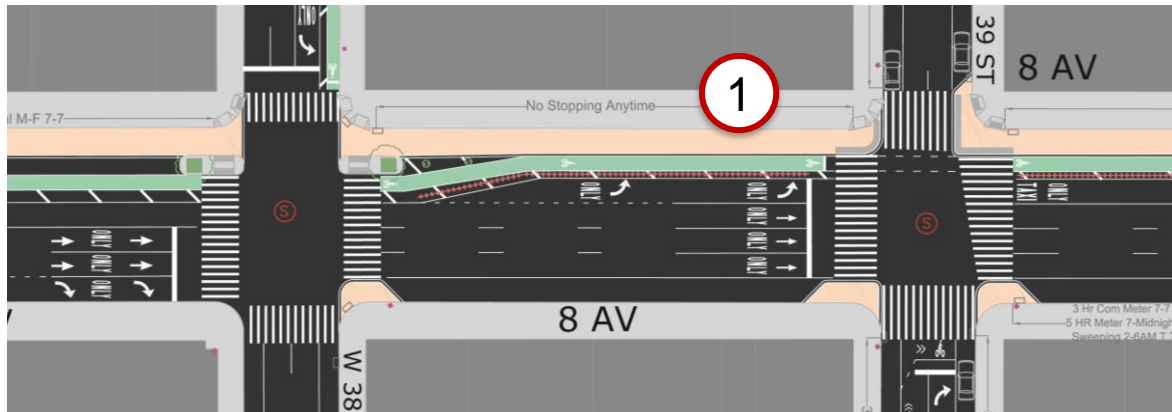


 Phase III – 43rd to 51st St

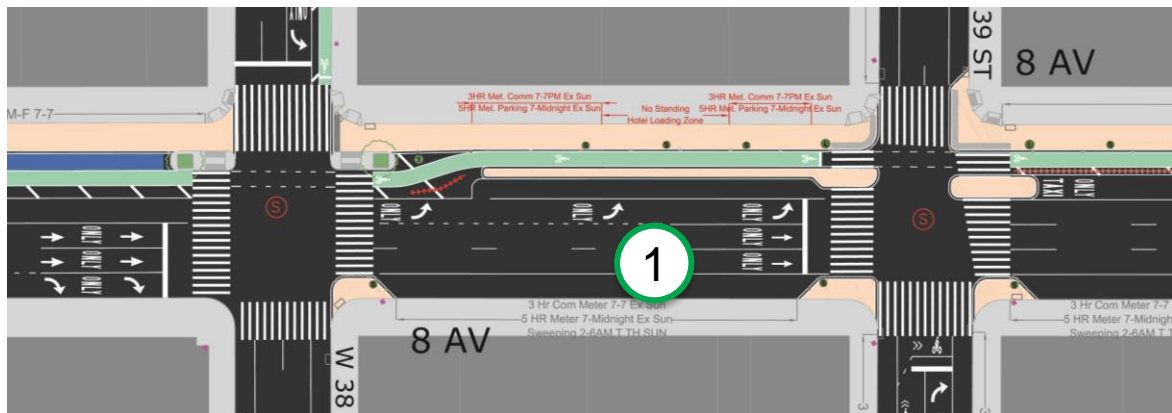
 Phase I – 38th to 39th St (Repaved 2023)

8th Ave – 38th St to 39th St

1 No loading access



1 Remove one travel lane to add commercial and hotel loading and improve alignment from moving lanes to the south



Project Summary

8th Avenue –38th St to 51st St

- Add painted sidewalk extension (10'-20') on the west side between 43rd St and 51st St
- Add split phase left turns at 45th, 47th, 49th Streets
- Install offset crossing at 51st St
- Add or maintain commercial loading spaces
- Add bike corrals throughout project limits



Before 2019 Project (8th Ave north of 38th St)



After 2019 Project (8th Ave north of 38th St)

Thank You!

Questions?



NYCDOT



nyc_dot



nyc_dot



NYCDOT