

7th Ave S at Bleecker Street

Pedestrian Safety Improvement Project

Fall
2012



Commissioner Janette Sadik-Khan, New York City Department of Transportation
Presented by the Pedestrian Projects Group, June 12, 2012 to Manhattan Community Board 2

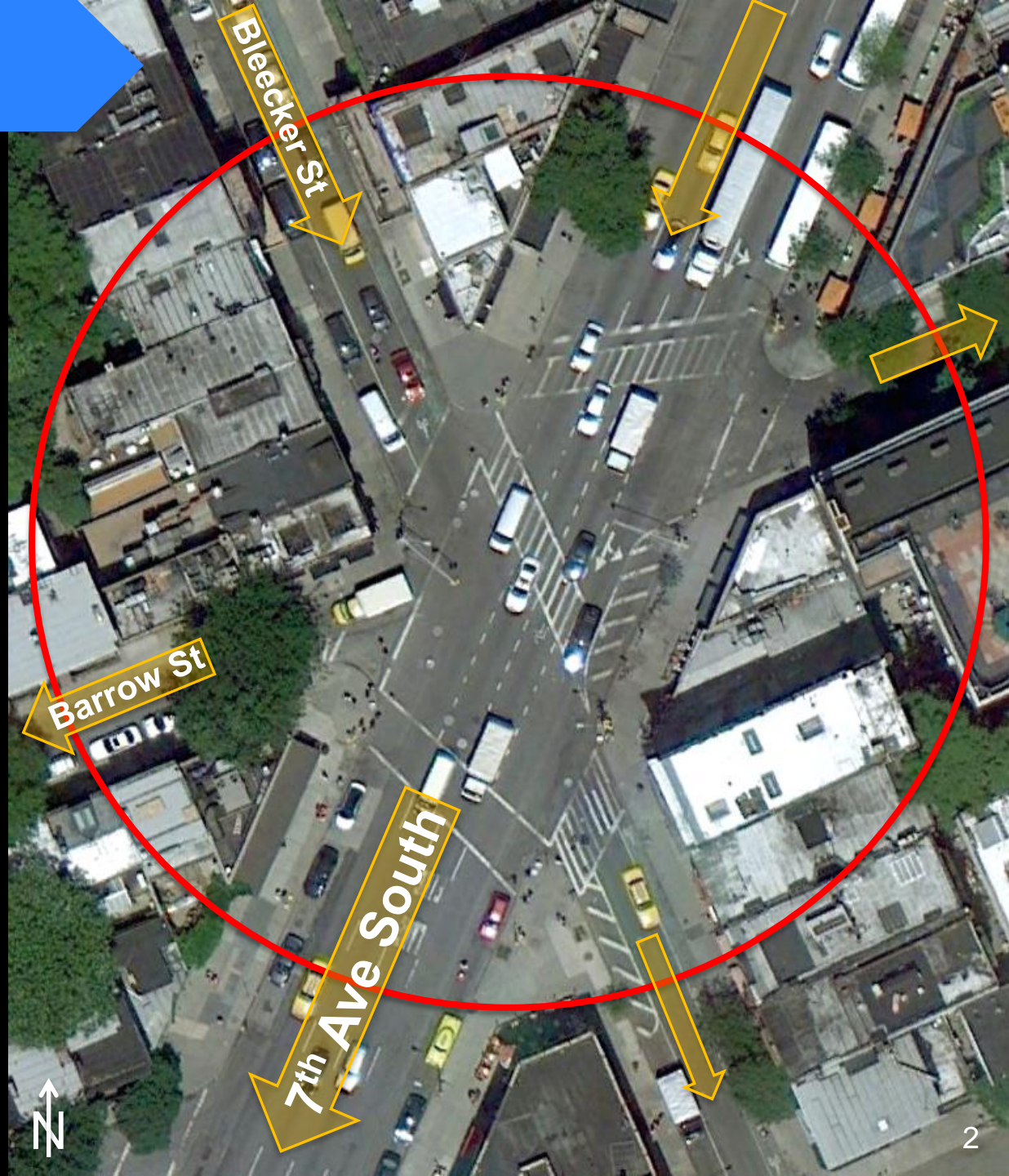


Project Area

Intersection:

7th Ave South

at Blecker St and Barrow St



Pedestrian Generators

Nearby subways and M20 bus route



Retail and restaurant corridor with sidewalk seating

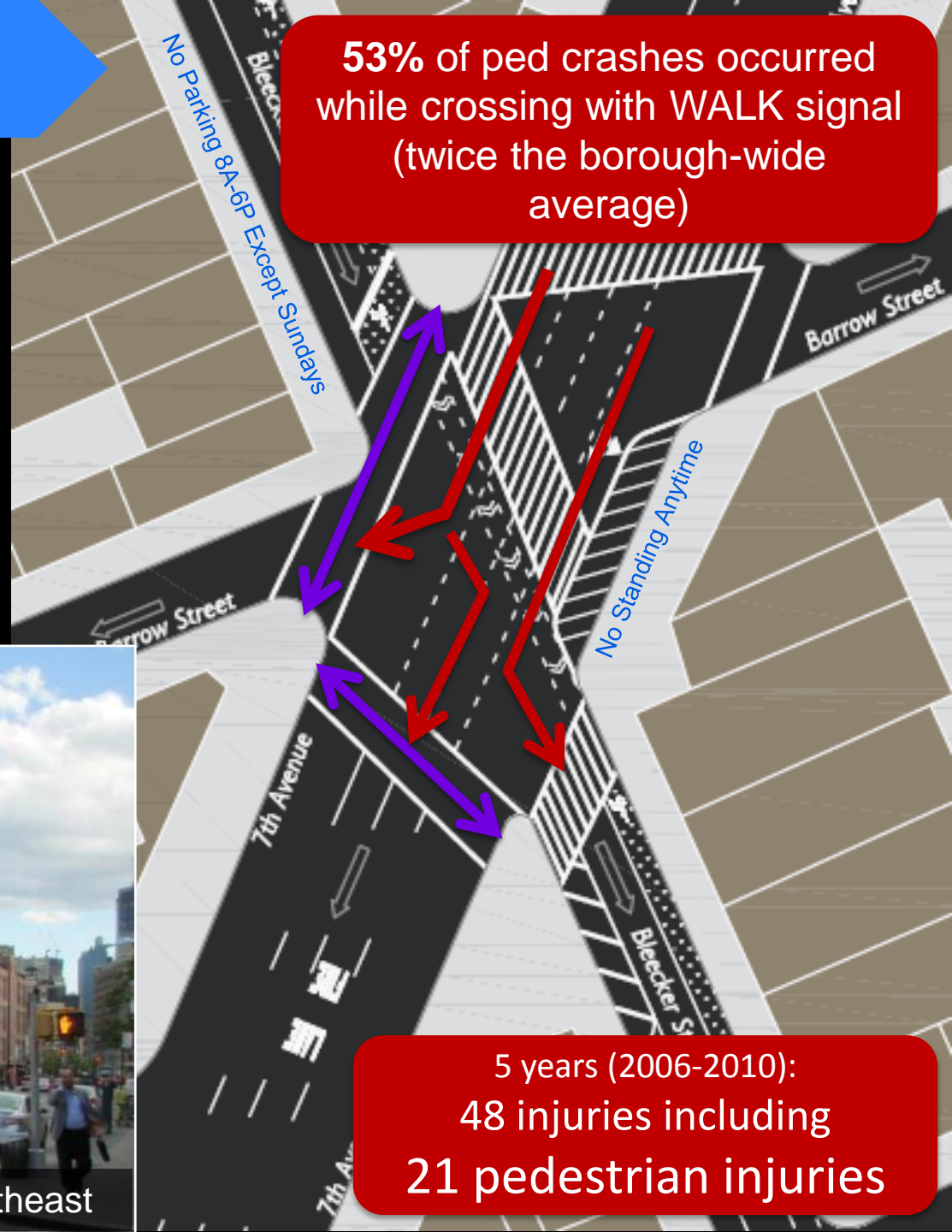
Tourist destination with heavy pedestrian traffic

Existing Conditions

Long crosswalks with turning conflicts

Soft-angle-turns when pedestrians have right-of-way with WALK signal

53% of ped crashes occurred while crossing with WALK signal (twice the borough-wide average)



View southeast

5 years (2006-2010):
48 injuries including
21 pedestrian injuries

Existing Conditions

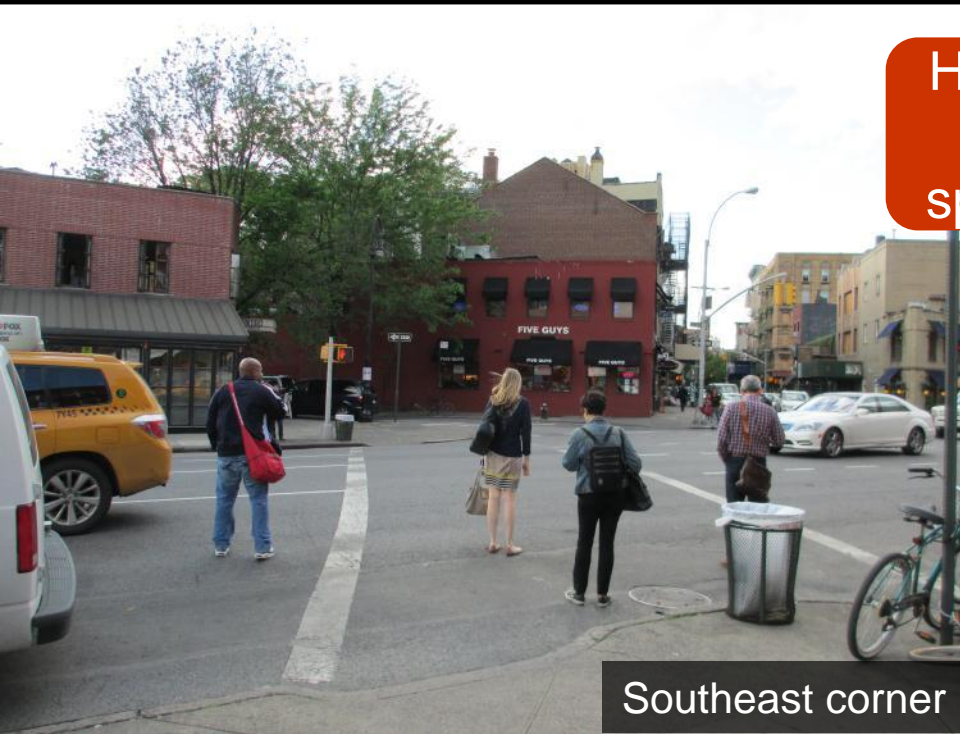
Left lane on 7th Ave S currently acts as defacto turn-only lane

Illegal double-turns cause congestion and crashes



Existing Conditions

Heavy left-turns onto Bleecker leaves underutilized road space that pedestrians occupy



Southeast corner

Heavy vehicle volume late-night Friday + Saturday



Rapid Response Toolkit

- Pavement markings
- Concrete safety islands
- New signage
- Painted and/or textured surfaces
- Flexible delineators



Rapid Response Toolkit



Sidewalk extensions
with and without
maintenance
partners



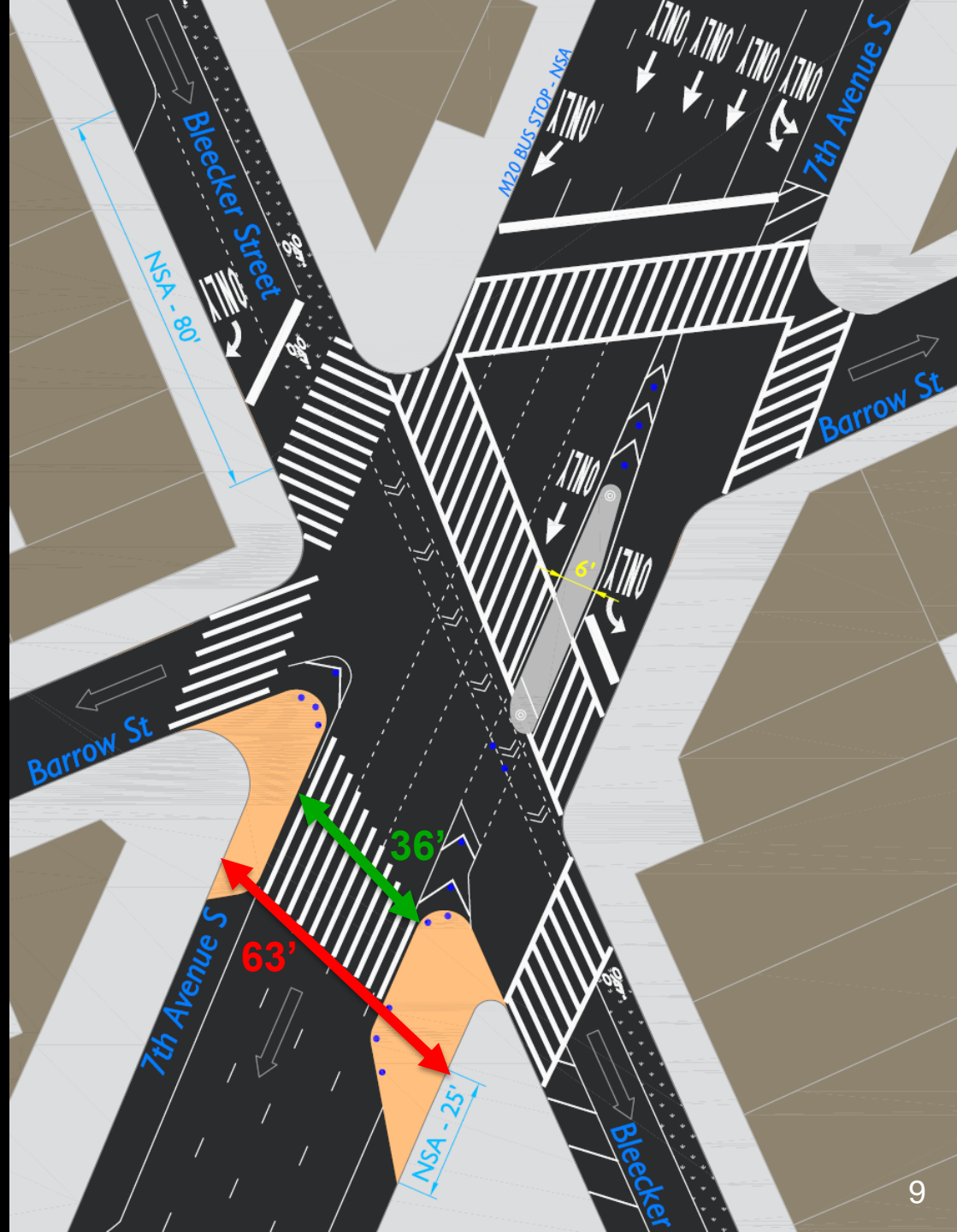
Proposal

Shortens crosswalks 27'

Adds turn-only lanes from 7th Ave S and Blecker St

Markings and flexible delineators limit double turns and reduce turning speeds

Increases and improves pedestrian space



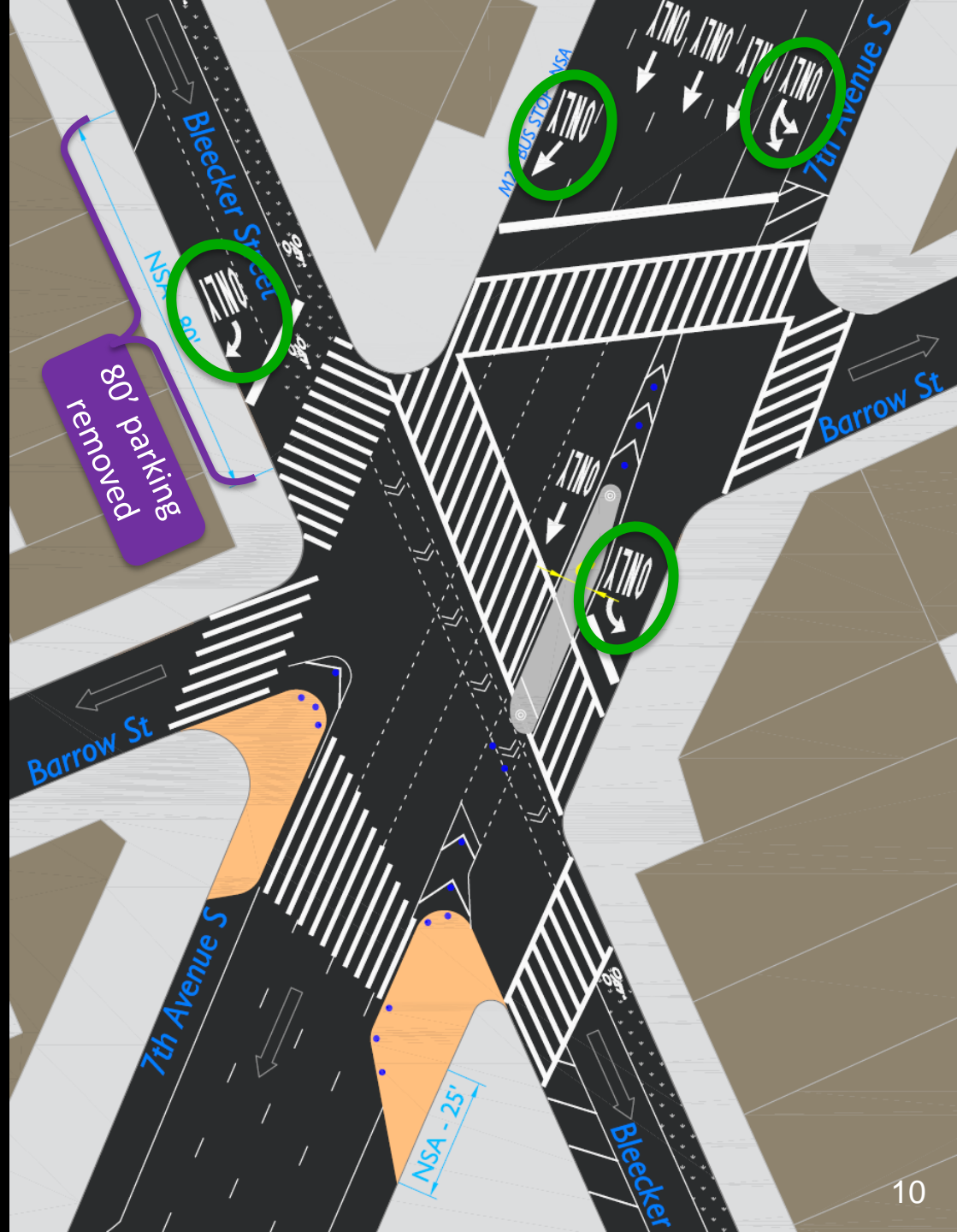
Proposal

Shortens crosswalks 27'

Adds turn-only lanes from 7th Ave S and Bleecker St

Markings and flexible delineators limit double turns and reduce turning speeds

Increases and improves pedestrian space



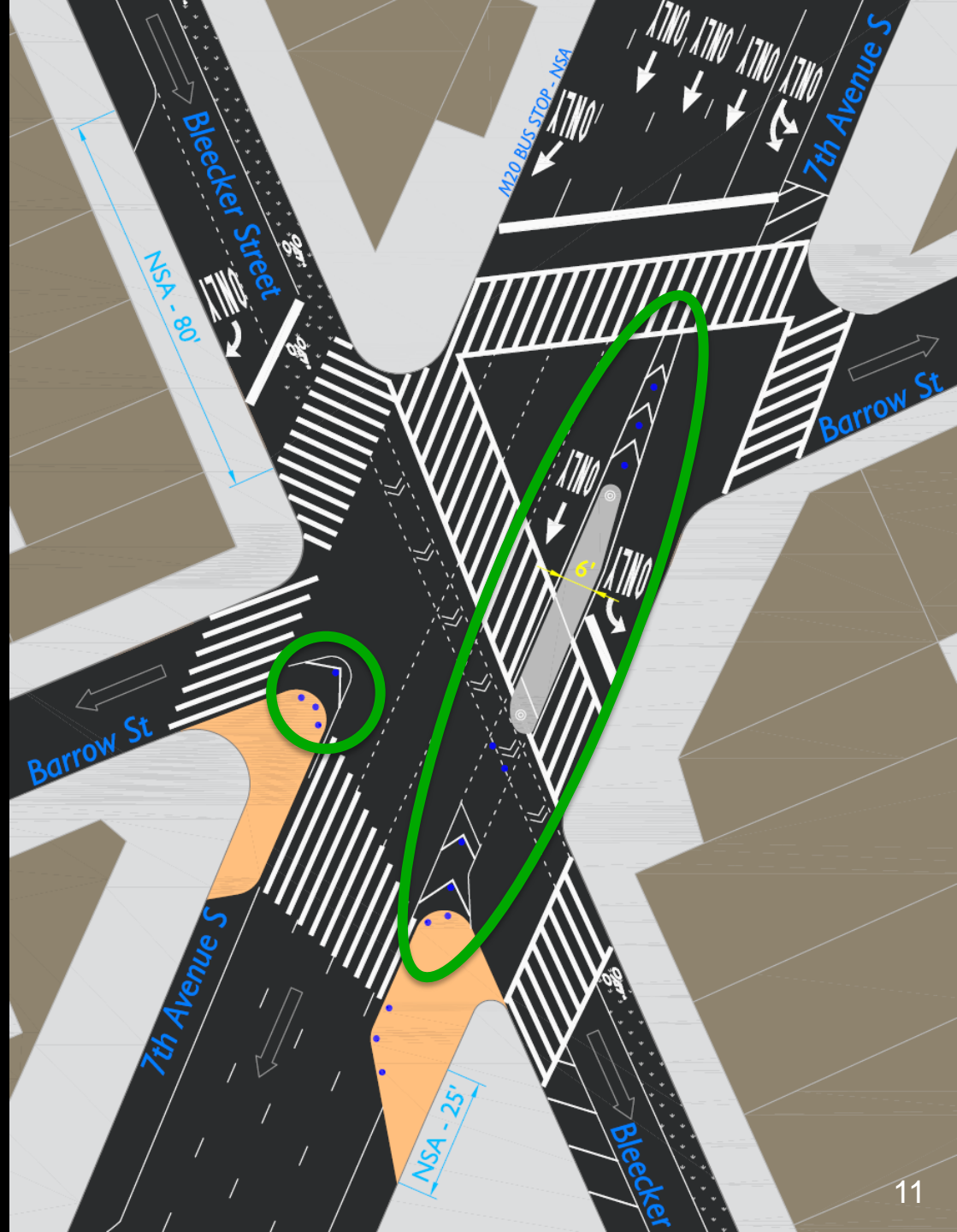
Proposal

Shortens crosswalks 27'

Adds turn-only lanes from 7th Ave S and Blecker St

Markings and flexible delineators limit double turns and reduce turning speeds

Increases and improves pedestrian space



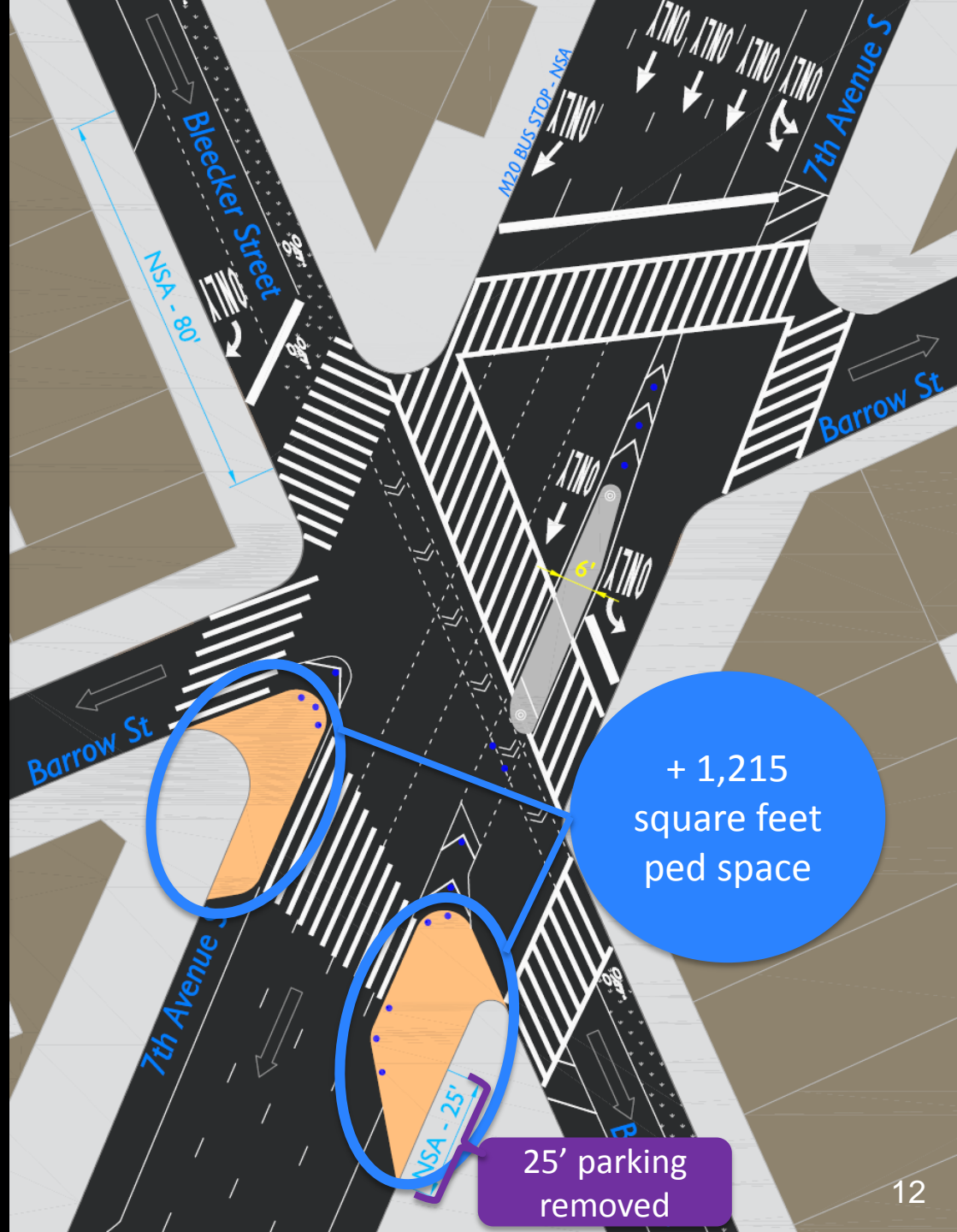
Proposal

Shortens crosswalks 27'

Adds turn-only lanes from 7th Ave S and Bleecker St

Markings and flexible delineators limit double turns and reduce turning speeds

Increases and improves pedestrian space



Proposal



Looking Southeast

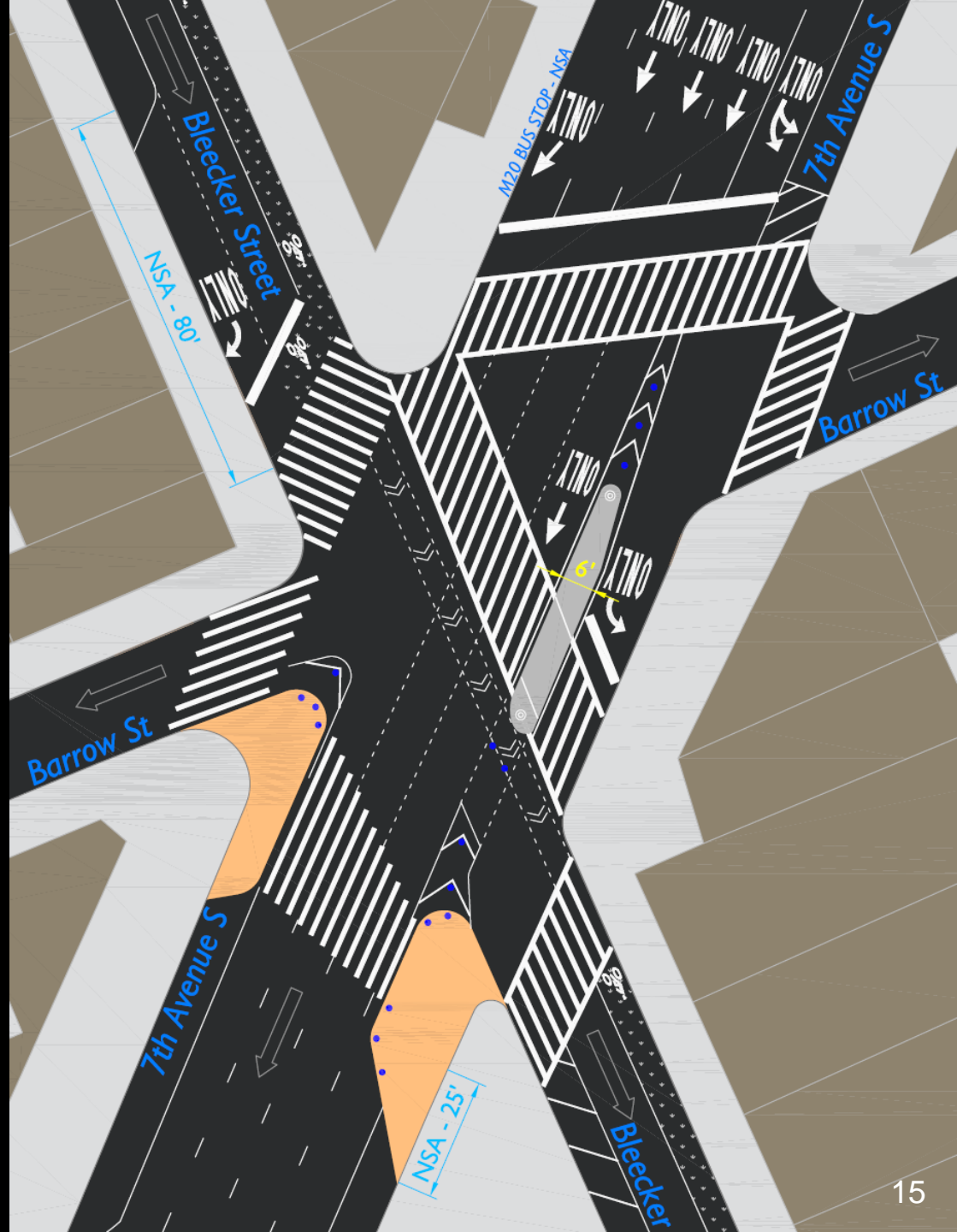
Proposal



Looking Northwest

Summary

1. Install “painted” neckdowns and high-visibility crosswalks to decrease crossing distances and reduce pedestrian exposure
2. Separate vehicles to prevent double-turns onto Bleecker and Barrow Sts
3. Add new right-turn only lane on Bleecker St and 7th Ave S in bus stop
4. New sidewalk space in road bed with flexible delineators



nyc.gov/dot

**Thank
You**