



# 7<sup>th</sup> Avenue, 86<sup>th</sup> Street to Poly Place

## School Safety Improvements

Presentation for CB 10 Transportation Committee | May 9, 2024



---

# Background

# 1

# 7<sup>th</sup> Ave, 86<sup>th</sup> St to Poly PI

## Project Area

- I.S. 322 opening Fall 2024 at 7<sup>th</sup> Ave and 86<sup>th</sup> St with ~600 students
- Safety concerns from community and elected officials
- Bus Routes:
  - B8 and B70 on 7th Ave
  - B1, X28, X38 on 86th St
- Local Truck Routes:
  - 7th Ave north of 92nd St
  - 86<sup>th</sup> St



# 7<sup>th</sup> Ave, 86<sup>th</sup> St to Poly PI

## Safety Data (2019-2023)

- 110 total injuries
- 2 severe injuries
- 1 fatality
- 15% of injuries were pedestrians
- 59% of pedestrians injured were crossing with a signal

**Injury Summary, 2019-2023 (5 Years)**

Type	Total Injuries	Severe Injuries	Fatalities	KSI
Pedestrian	17	0	0	0
Bicyclist	8	1	0	1
Motor Vehicle	81	1	1	1
Other Motorized	4	0	0	0
<b>Total</b>	<b>110</b>	<b>2</b>	<b>1</b>	<b>2</b>

Source: Fatalities: NYCDOT, Injuries: NYPD Forms database. KSI: Persons Killed or Severely Injured

Note: Map may not include total or severe injuries that occurred at midblock locations. Data is based off of NYSDOT/NYS DMV/NYPD crash and injury data available as of May 2024.



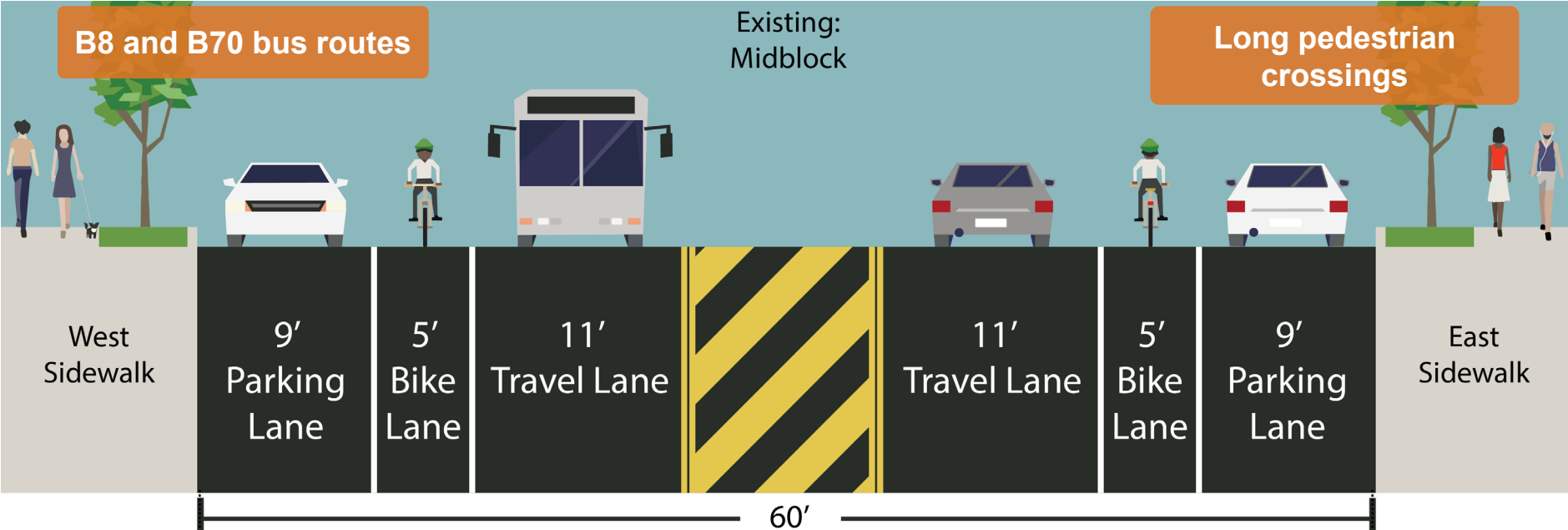
---

## Existing Conditions

# 2

# 7<sup>th</sup> Ave, 86<sup>th</sup> St to Poly PI

## Existing Conditions



# 7<sup>th</sup> Ave, 86<sup>th</sup> St to Poly PI

## Existing Conditions

Long pedestrian crossings



# 7<sup>th</sup> Ave and 88<sup>th</sup> St, Parrot PI

## Existing Conditions: Slip Lane

Slip Lane allows fast turns and creates additional conflict points

Pedestrians forced to walk out of their way

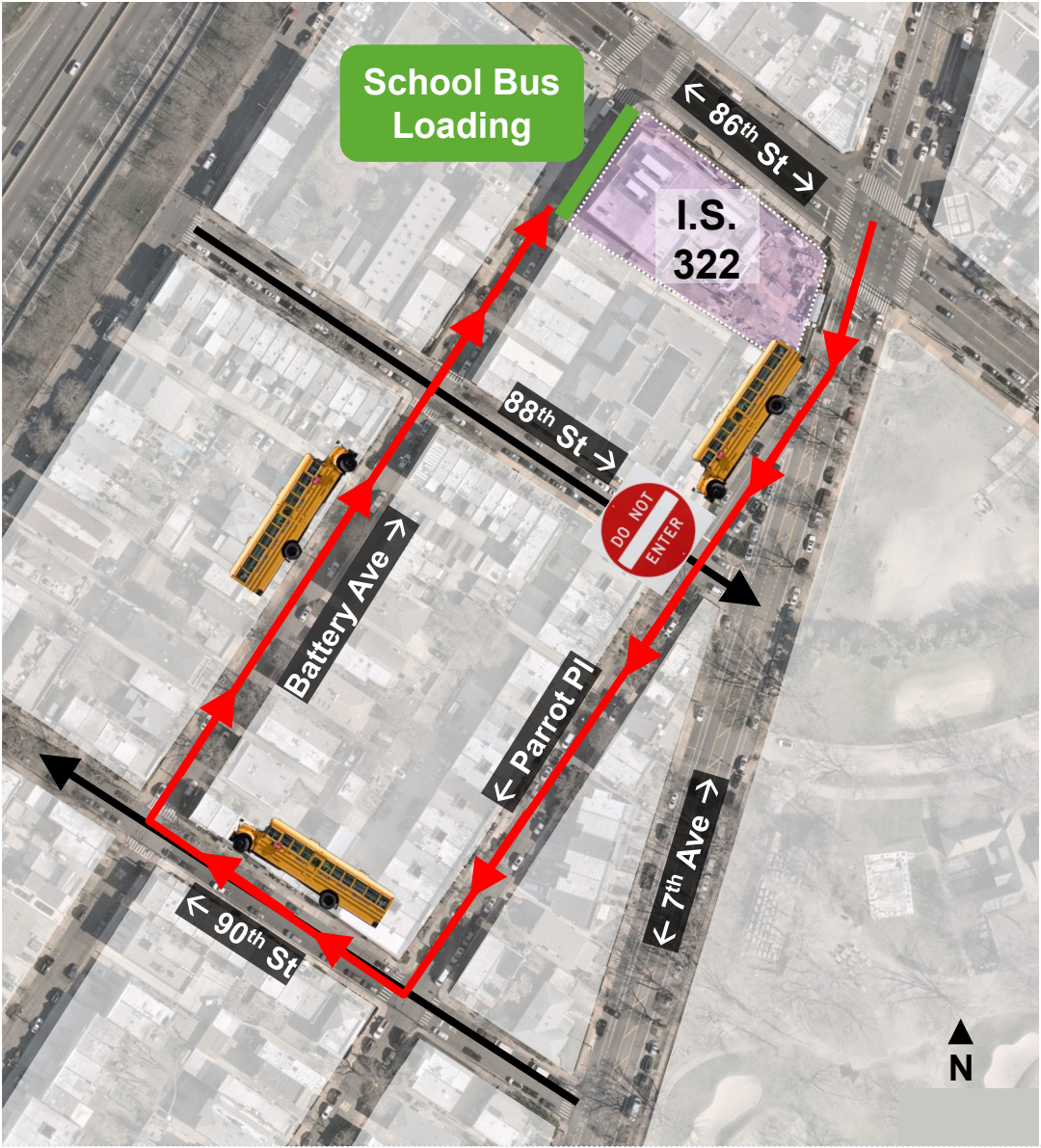




# 7<sup>th</sup> Ave, 86<sup>th</sup> St to Poly PI

## School Bus Route

Current one-way configuration of 88th St makes school buses go out of the way to get to loading area of new school



# 7<sup>th</sup> Ave, 86<sup>th</sup> St to Poly PI

## Existing Conditions

Concerns about reckless driving



Evidence of donuts

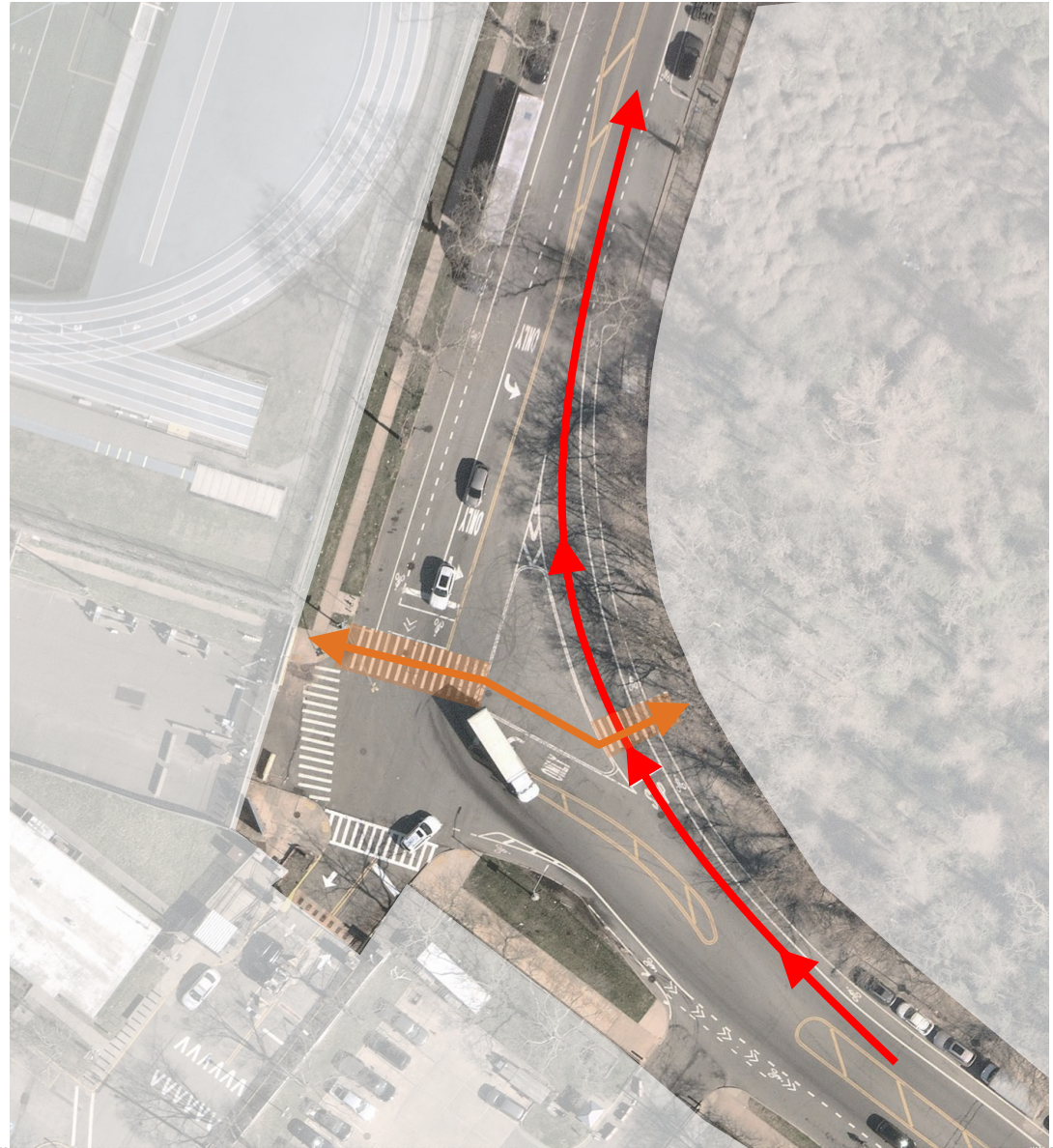
# 7<sup>th</sup> Ave and Poly PI

## Existing Conditions

Slip lane allows for fast right turns through crosswalk

Long unprotected pedestrian crossing distances

Painted island is susceptible to illegal parking



# 86<sup>th</sup> St

## Existing Conditions

High volumes coming from Gowanus Expwy

Bus Routes:  
(B1, X28, X38)

Local Truck Route

Long pedestrian crossings



## 7<sup>th</sup> Ave, 86<sup>th</sup> St to Poly PI

### Existing Conditions: Bus Stops

Bus Stop landing area  
inaccessible for people  
using wheelchairs,  
susceptible to mud



# 7<sup>th</sup> Ave, 86<sup>th</sup> St to Poly Pl

## Existing Conditions: Narrow Sidewalk

Sidewalk along the park is only 5' wide, causing many joggers to use the street



# 7<sup>th</sup> Ave, 86<sup>th</sup> St to Poly PI

## Existing Conditions: Speeding

**100%**  
of vehicles speeding

**Average speed is  
43mph**

**85th percentile speed is  
50mph**



Source: Recent speed study conducted North of 92<sup>nd</sup> St:

# 7<sup>th</sup> Ave, 86<sup>th</sup> St to Poly PI

## Existing Conditions: Truck Parking

Long-standing  
community complaints

Large trucks illegally  
parked for extended  
periods





---

Proposal

3

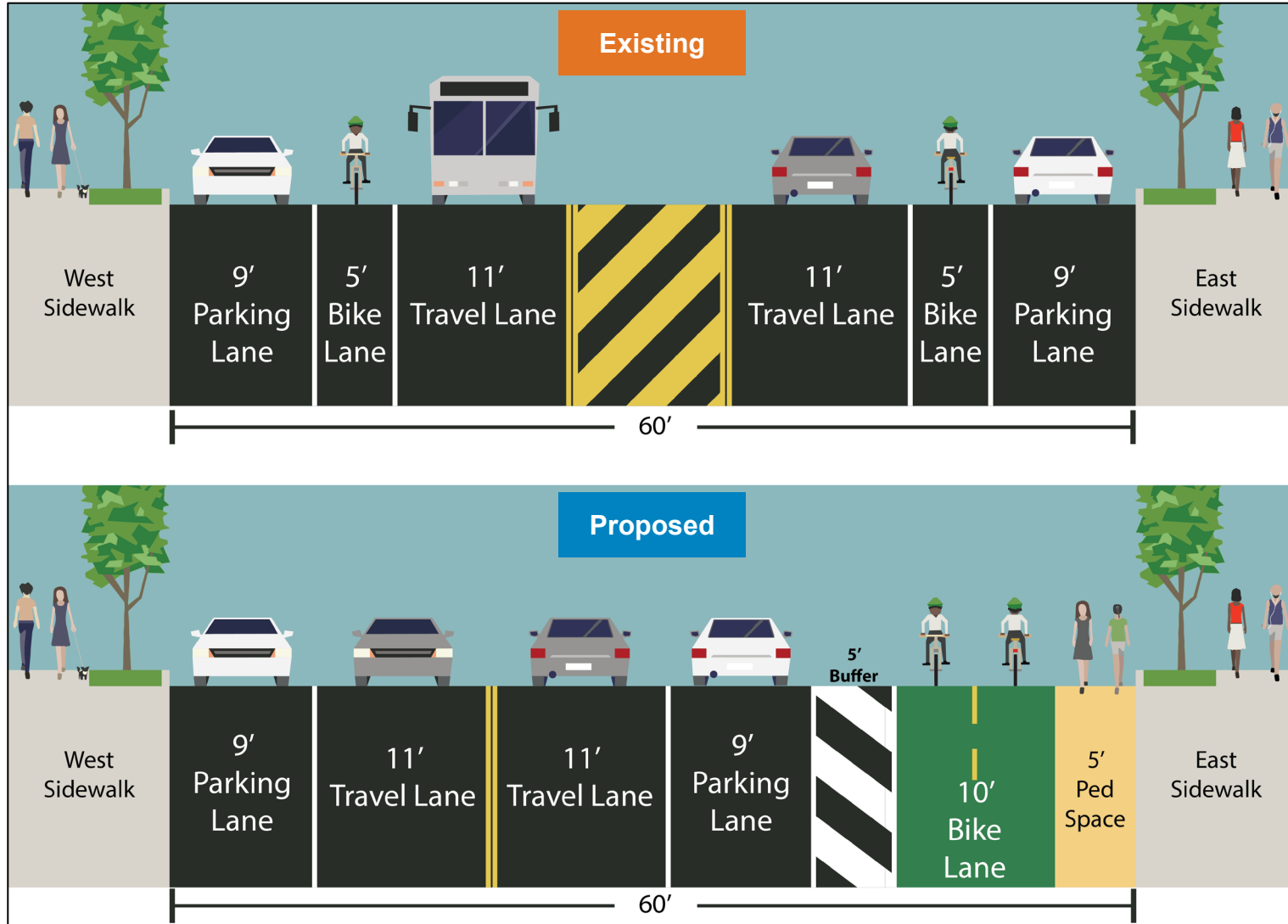
# 7<sup>th</sup> Ave, 86<sup>th</sup> St to Poly PI

## Proposal Detail: Midblock

Removal of painted median reduces likelihood of speeding

Painted sidewalk extension provides additional space for walking and jogging along the park

Protected bike lane provides dedicated space for cyclists and reduces conflicts



# 7<sup>th</sup> Ave, 86<sup>th</sup> St to Poly PI

## Proposal: Parking-Protected Bike Lane



Upgrade existing standard bike lanes to two-way parking-protected

Traffic calming and speed reduction

Shorter pedestrian crossings next to schools and bus stops



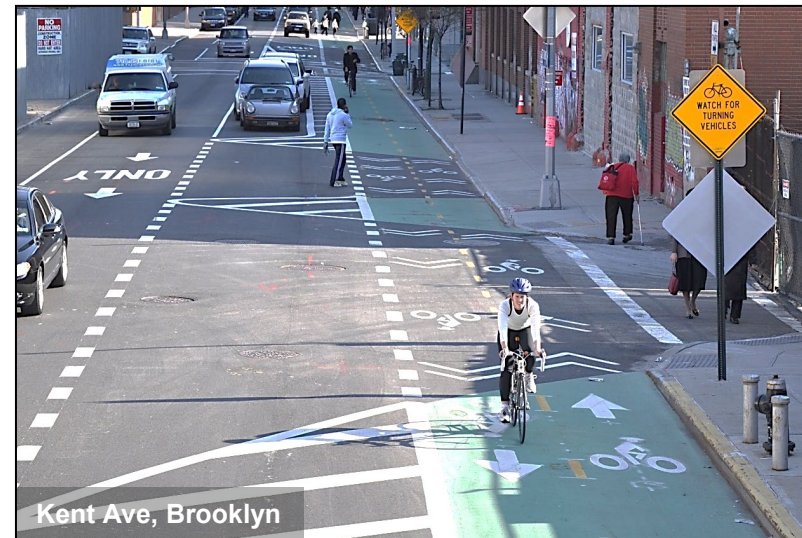
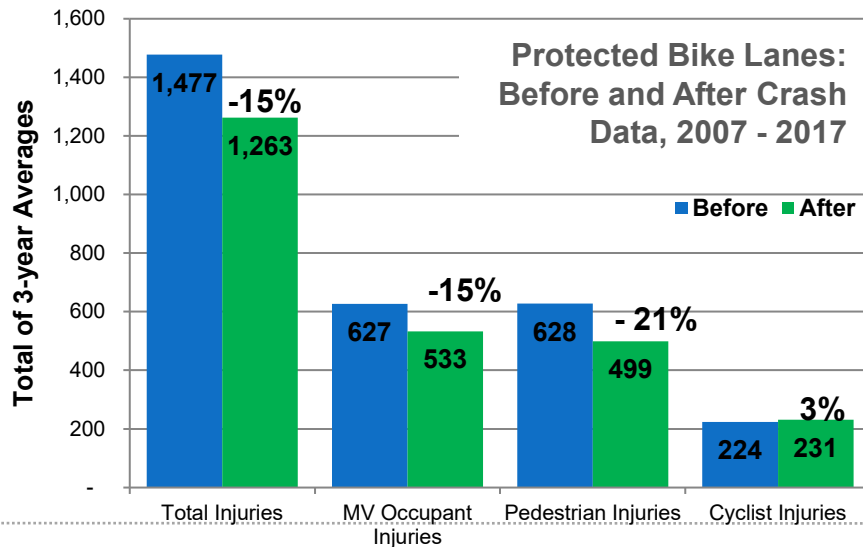
# 7<sup>th</sup> Ave, 86<sup>th</sup> St to Poly PI

## Protected Bike Lanes: Safety Data

On NYC streets where protected bike lanes were installed in 2007 – 2017:

- **15%** drop in all crashes with injuries
- **21%** drop in pedestrian injuries

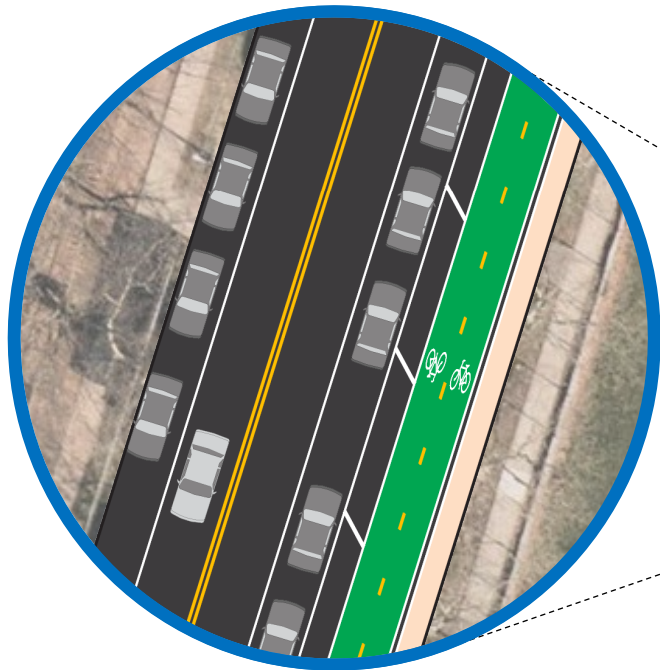
Street designs that include protected bike lanes increase safety for all users



Data from 25 separate protected bicycle lane projects installed from 2007-2014 with 3 years of after data. Includes portions of 1 Ave, 2 Ave, 8 Ave, 9 Ave, Broadway, Columbus Ave, Hudson St, Lafayette St / 4 Ave, Sands St, Allen/Pike St, Kent Ave, Prospect Park West, Flushing Ave, Bruckner Blvd & Longfellow Ave, Imlay St / Conover St, Paerdegat Ave. Only sections of projects that included protected bike lanes were analyzed.  
Source: NYPD AIS/TAMS Crash Database

# 7<sup>th</sup> Ave, 86<sup>th</sup> St to Poly PI

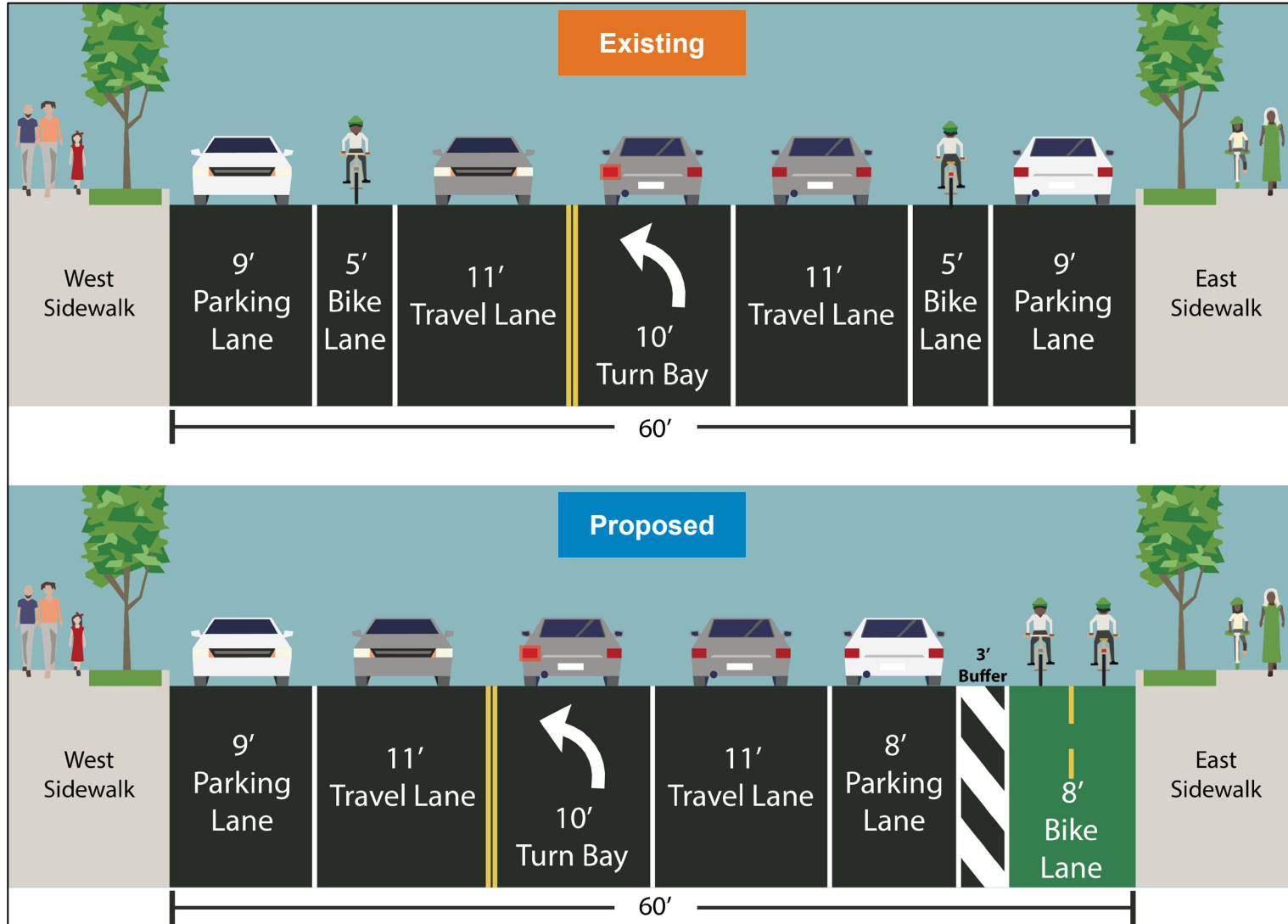
## Proposal Detail: Midblock



# 7<sup>th</sup> Ave, 86<sup>th</sup> St to Poly PI

## Proposal Detail: Turn Bays

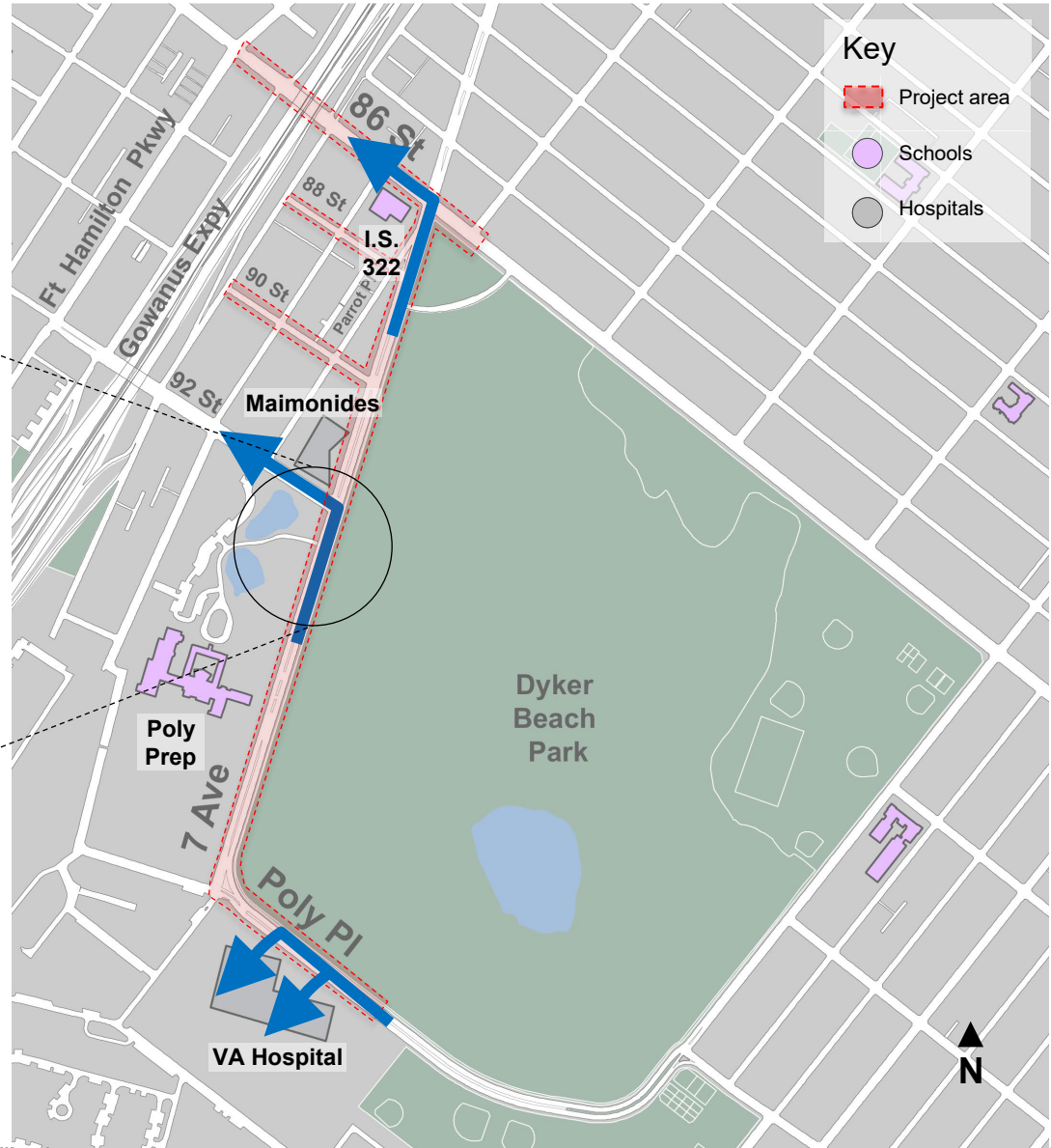
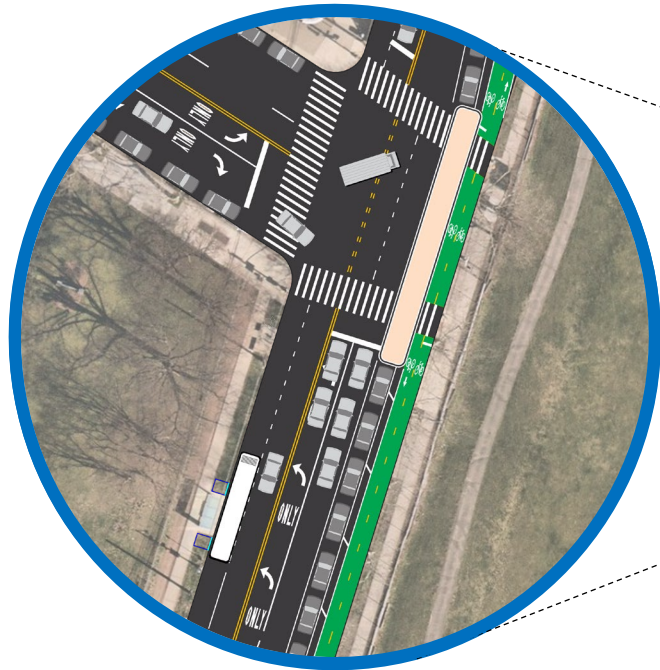
Left Turn Bays maintained where needed to reduce backups and clarify traffic movements



Protected bike lane provides dedicated space for cyclists and reduces conflicts

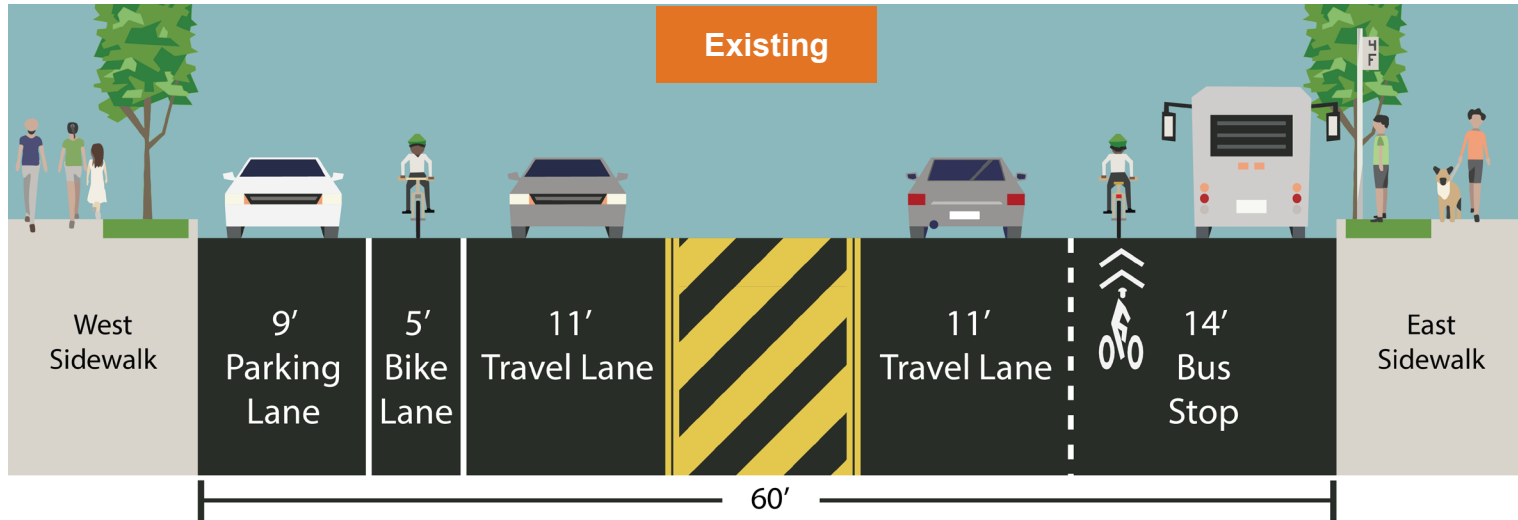
# 7<sup>th</sup> Ave, 86<sup>th</sup> St to Poly PI

## Proposal Detail: Turn Bays

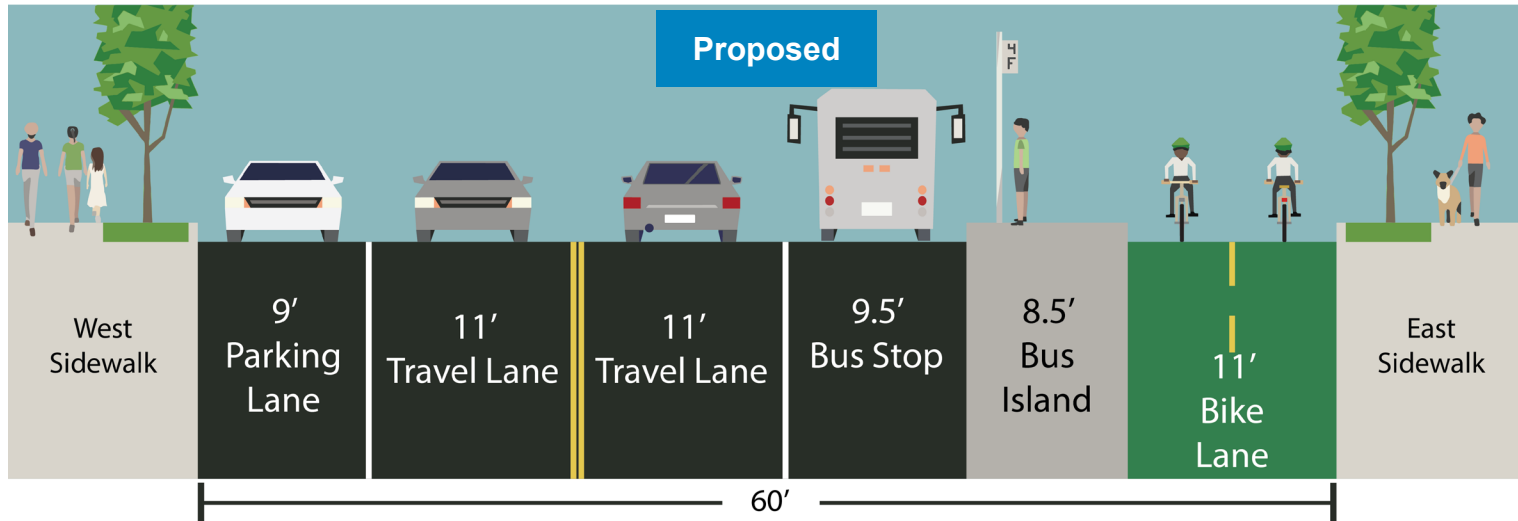


# 7<sup>th</sup> Ave, 86<sup>th</sup> St to Poly PI

## Proposal Detail: Bus Stops



Bus Boarding Island provides accessible space for bus loading and removes conflicts between bikes and buses

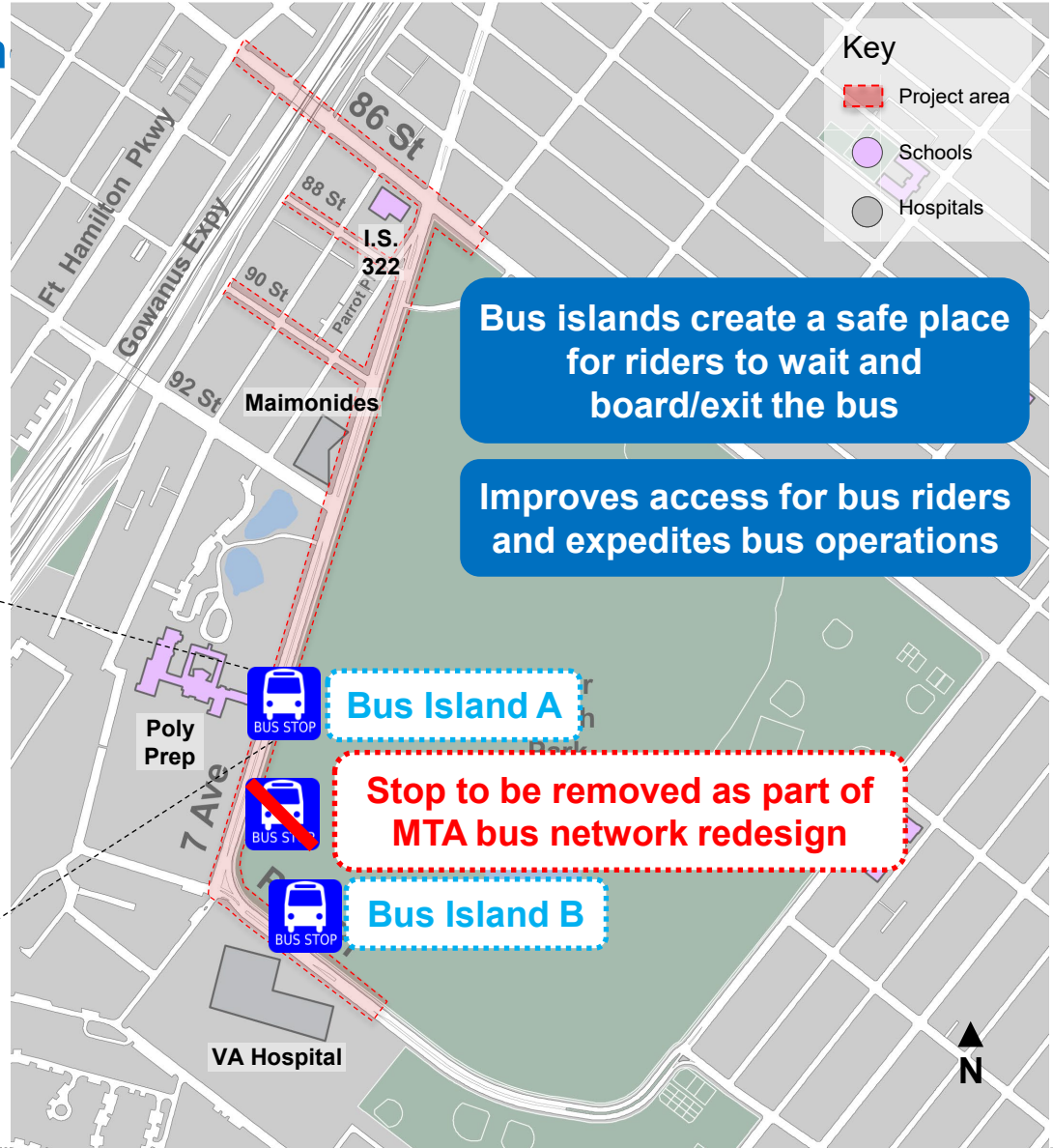


Protected bike lane provides dedicated space for cyclists and reduces conflicts



# 7<sup>th</sup> Ave, 86<sup>th</sup> St to Poly PI

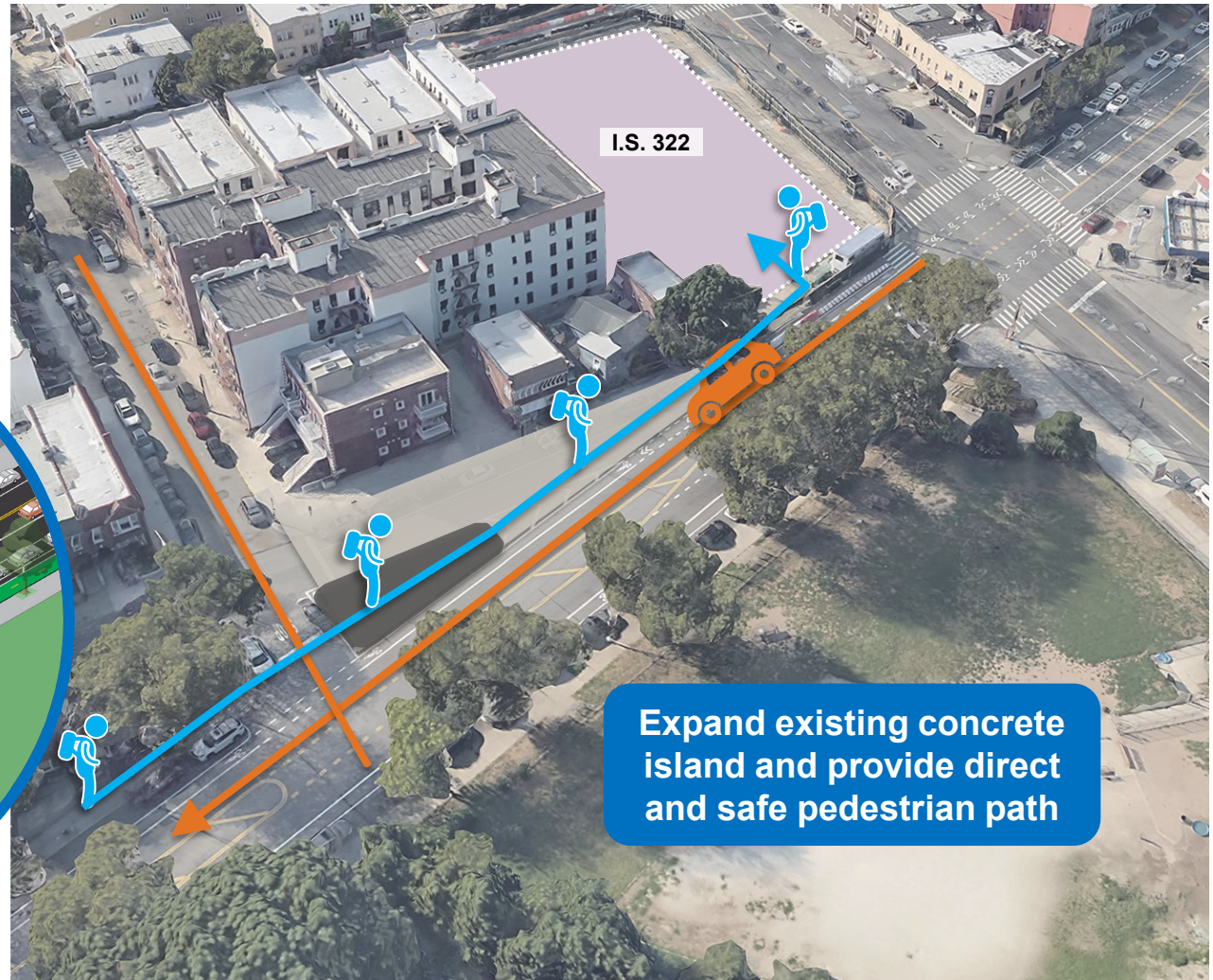
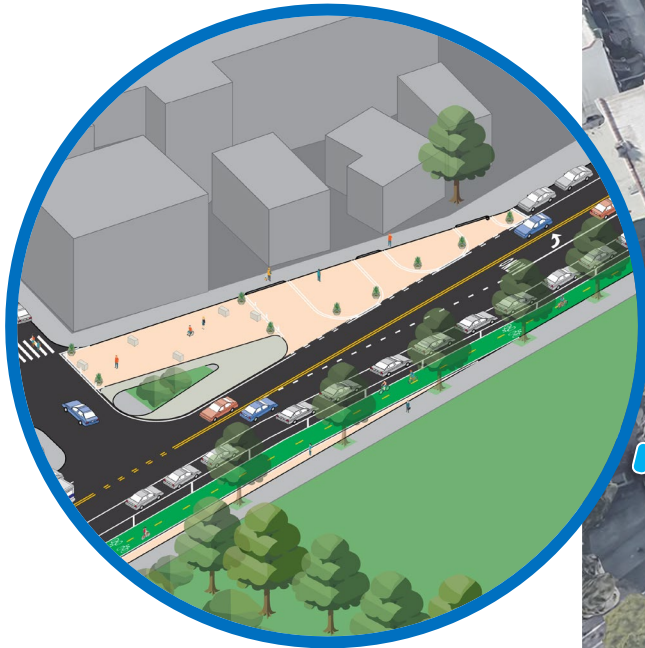
## Proposal Detail: Bus Boarding



# 7<sup>th</sup> Ave, 86<sup>th</sup> St to Poly PI

## Proposal: Slip Lane Closure

Close Parrot PI slip lane  
between 7<sup>th</sup> Ave and 88<sup>th</sup> St  
with driveway access  
maintained



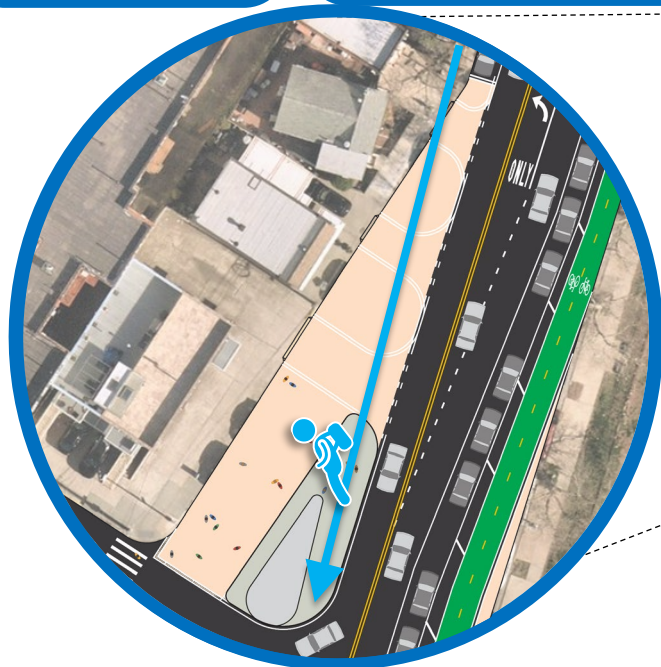
Expand existing concrete  
island and provide direct  
and safe pedestrian path

# 7<sup>th</sup> Ave, 86<sup>th</sup> St to Poly PI

## Proposal: Direction Changes and Slip Lane Closure

Convert 88<sup>th</sup> St to Westbound and 90<sup>th</sup> St to Eastbound

Close Parrot PI slip lane between 7<sup>th</sup> Ave and 88<sup>th</sup> St with driveway access maintained



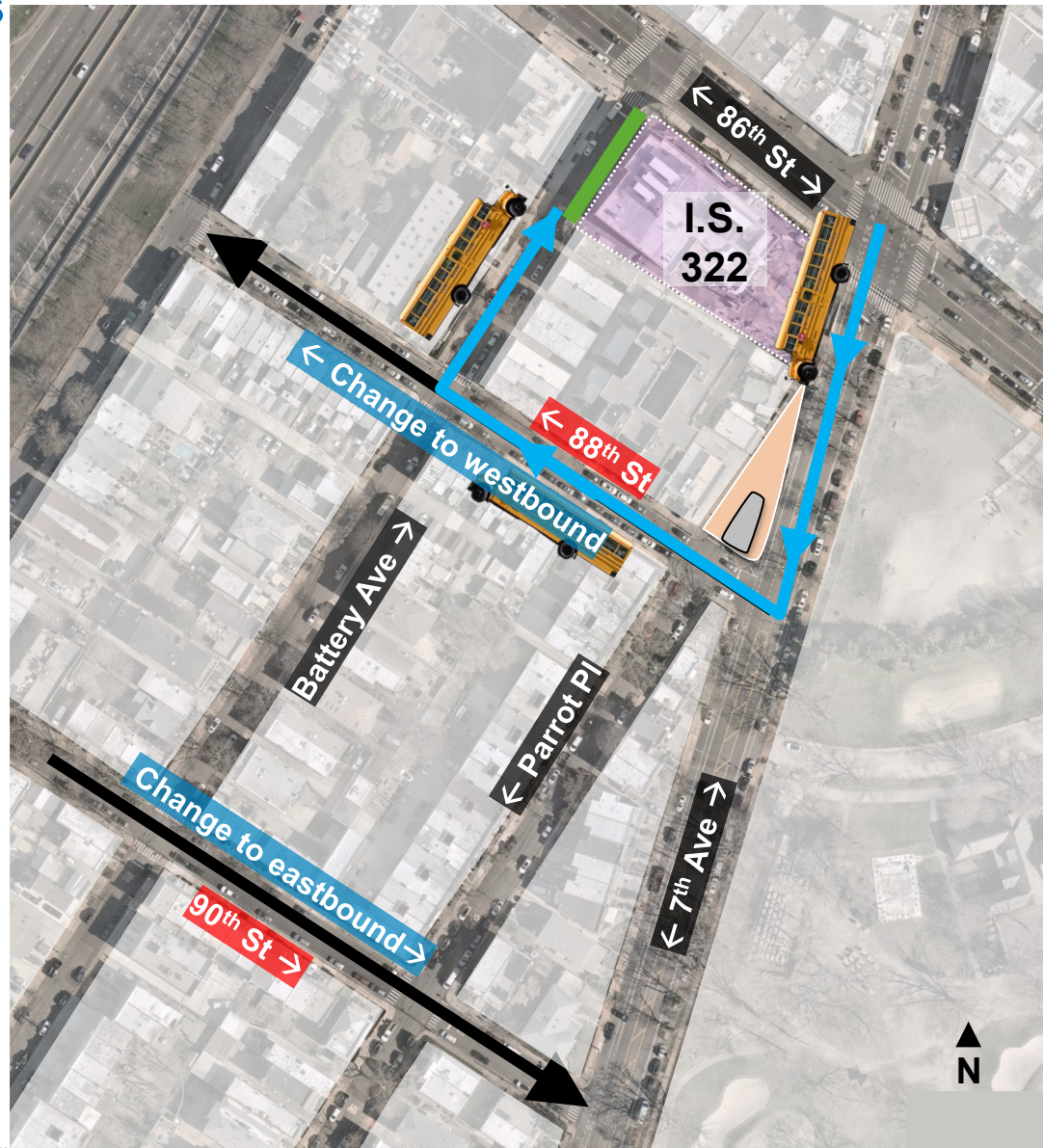
Expand existing concrete island and provide direct and safe pedestrian path



# 7<sup>th</sup> Ave, 86<sup>th</sup> St to Poly PI

## Proposal: Direction Changes and Slip Lane Closure

88<sup>th</sup> St conversion will give school buses shorter route to loading zone at IS 322



# 7<sup>th</sup> Ave, 86<sup>th</sup> St to Poly PI

## Proposal Detail: Slip Lane Closure



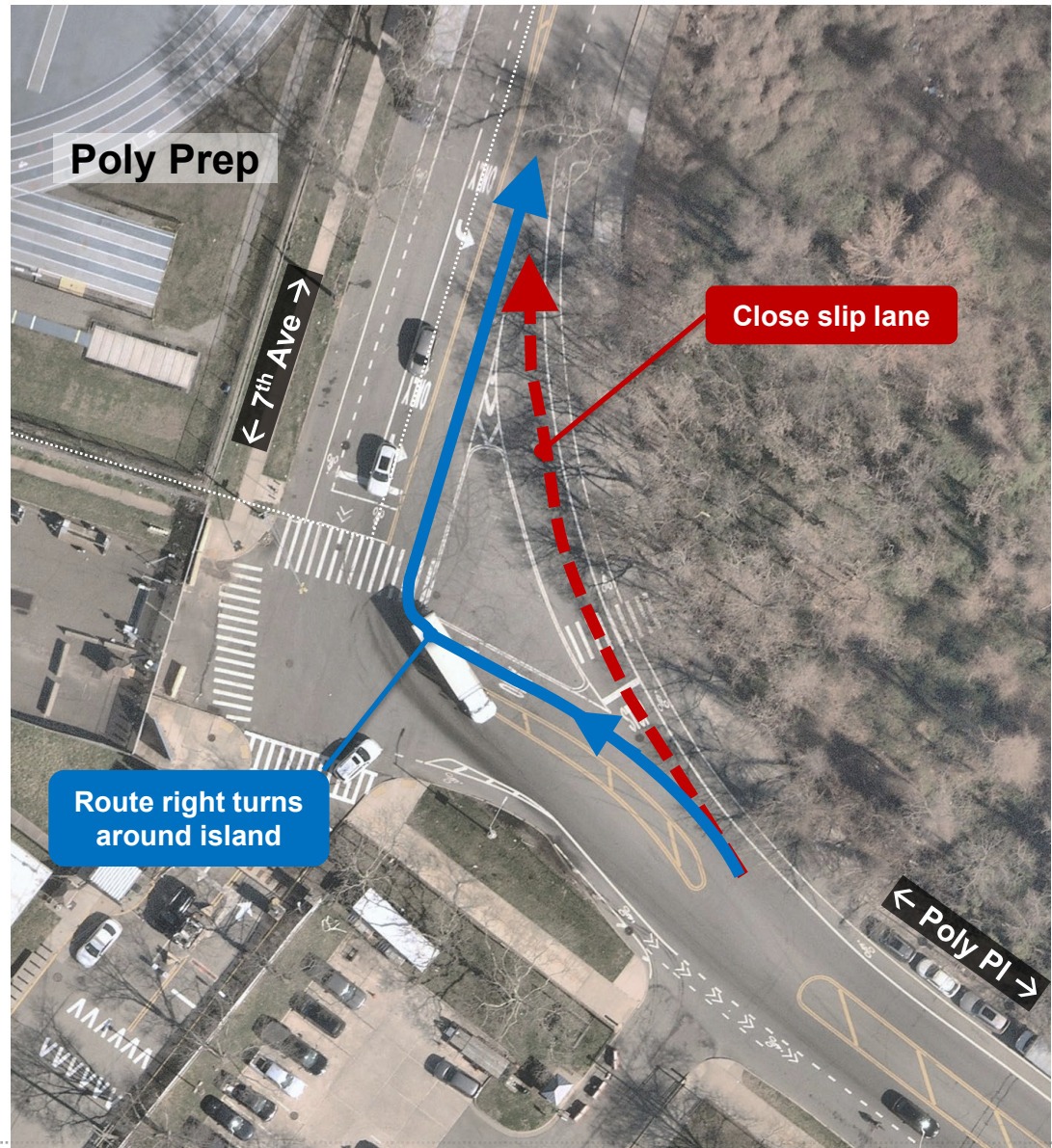
Driveway access maintained through closed slip lane



Banker's Anchor Plaza, N 15<sup>th</sup> St, BK

# 7<sup>th</sup> Ave and Poly PI

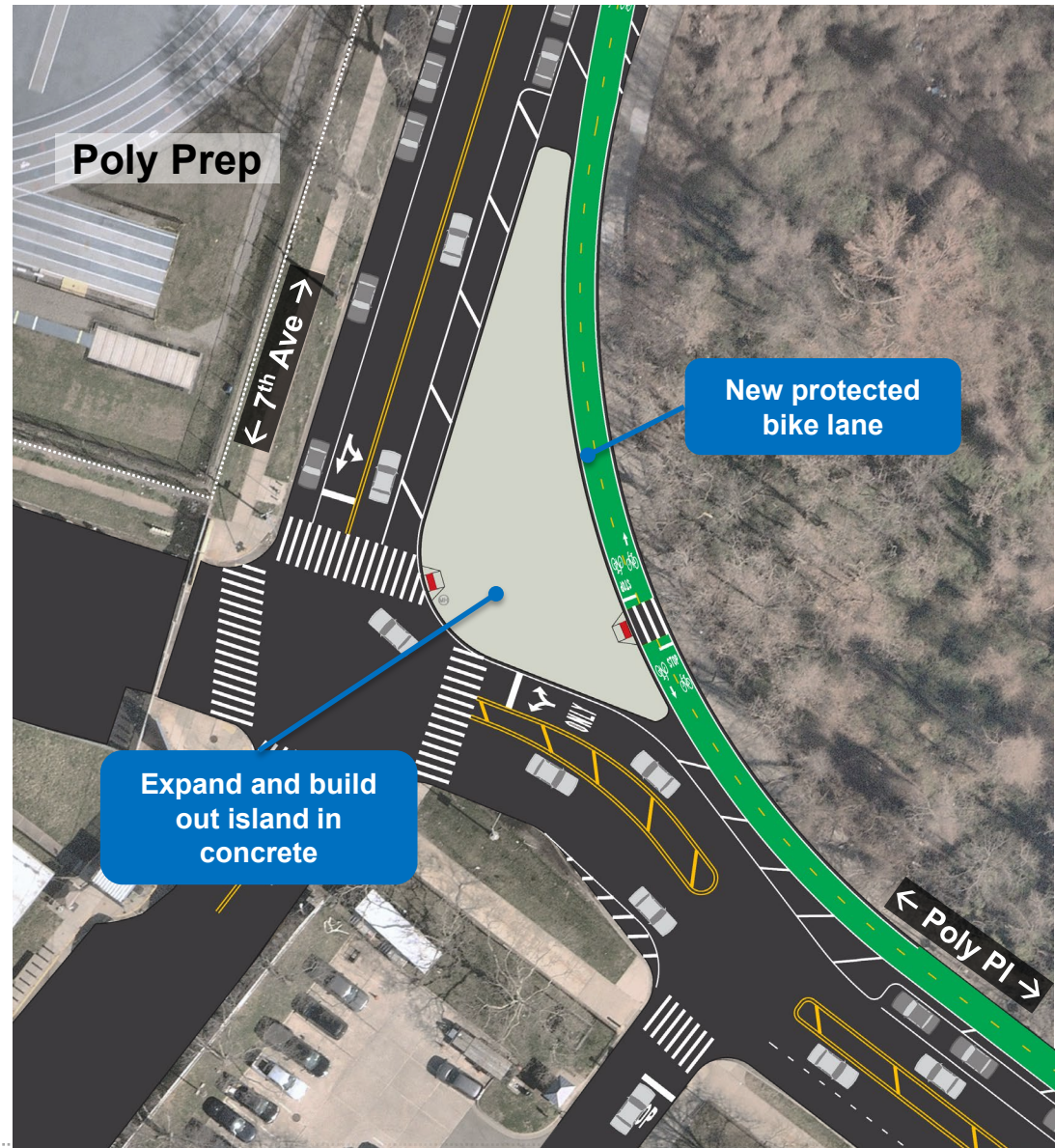
## Proposal Details: Slip Lane Closure



# 7<sup>th</sup> Ave and Poly PI

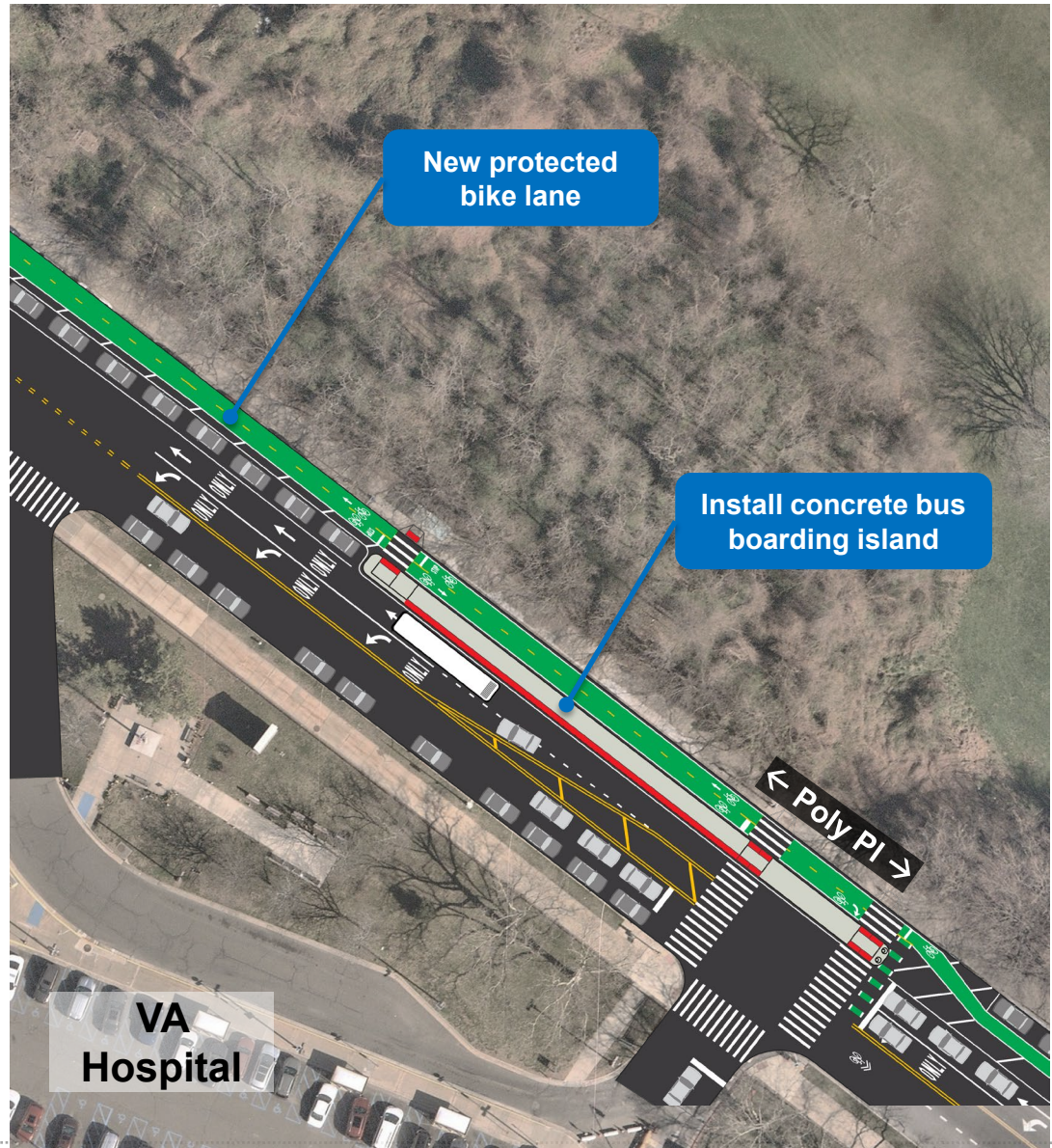
## Proposal Details: Slip Lane Closure

Potential to add street furniture, granite blocks to discourage sidewalk parking on expanded island



# 7<sup>th</sup> Ave and Poly PI

## Proposal Details: Bus Boarding Island



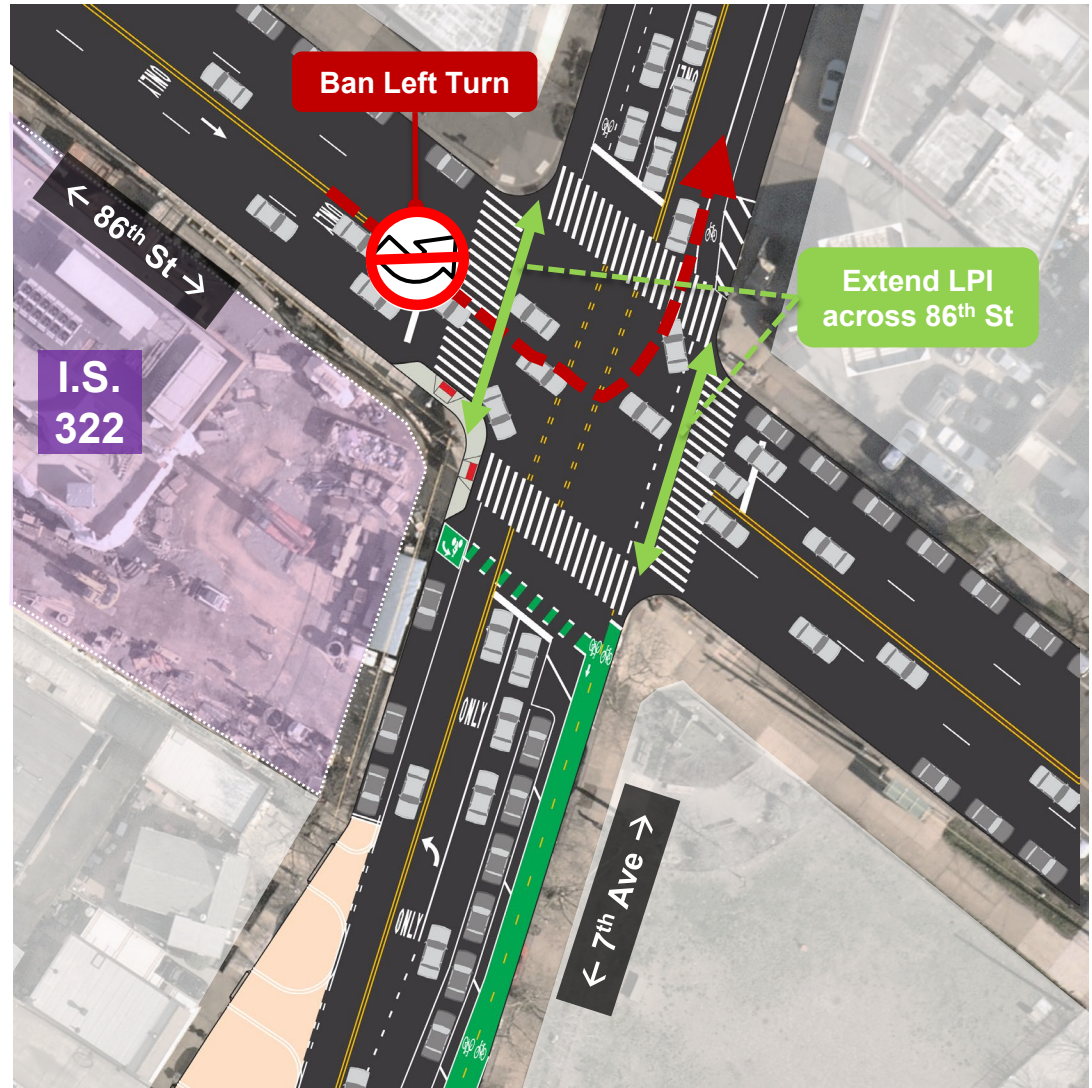


# 7<sup>th</sup> Ave and 86<sup>th</sup> St

## Proposal Details: 86<sup>th</sup> St. & 7<sup>th</sup> Ave.

Left turn ban reduces vehicle conflicts and allows for signal timing changes

Extended LPI across 86<sup>th</sup> St gives pedestrians more of a head start



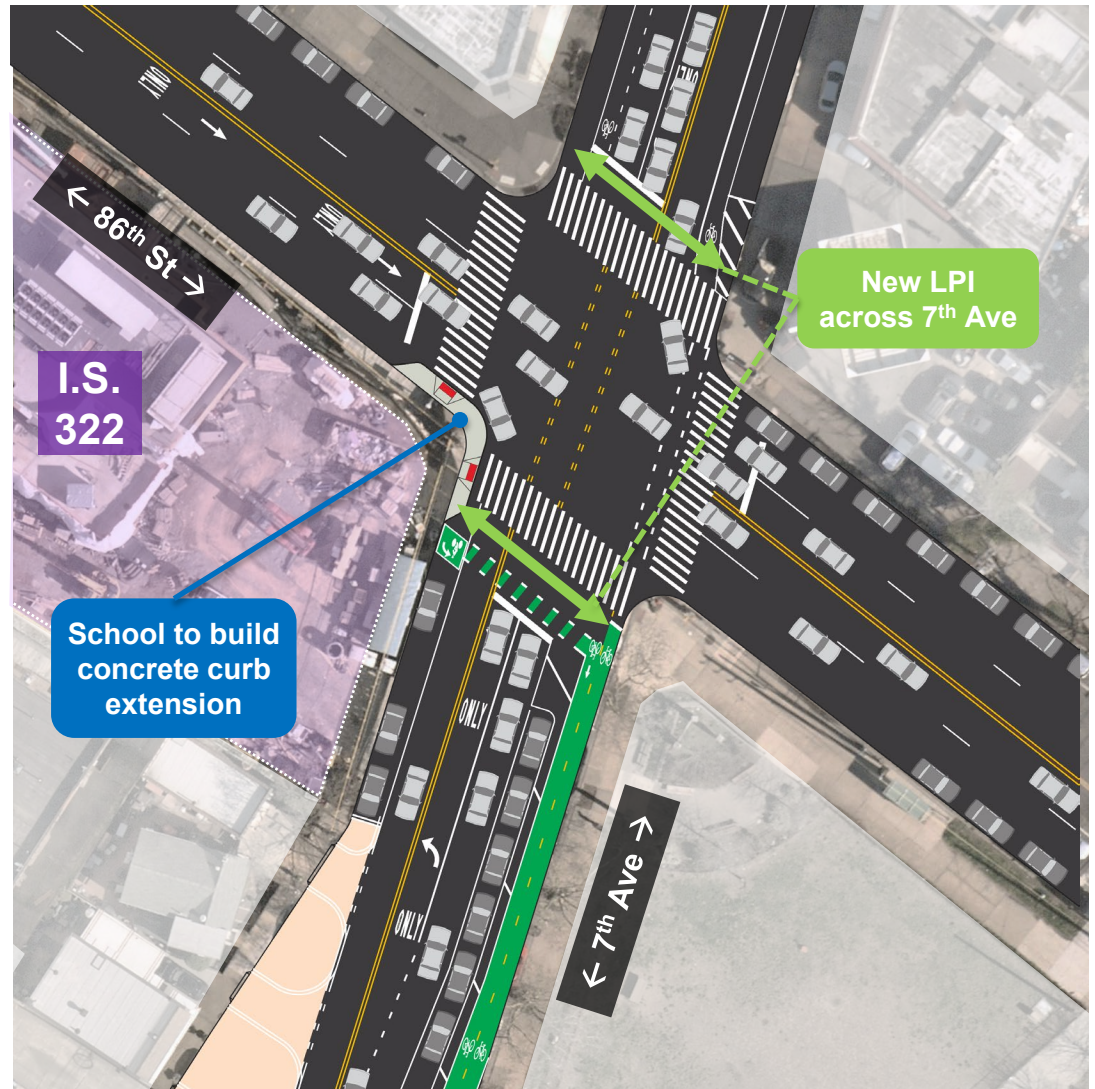
# 7<sup>th</sup> Ave and 86<sup>th</sup> St

## Proposal Details: 86<sup>th</sup> St. & 7<sup>th</sup> Ave.

New LPI across 7<sup>th</sup> Ave gives pedestrians a head start

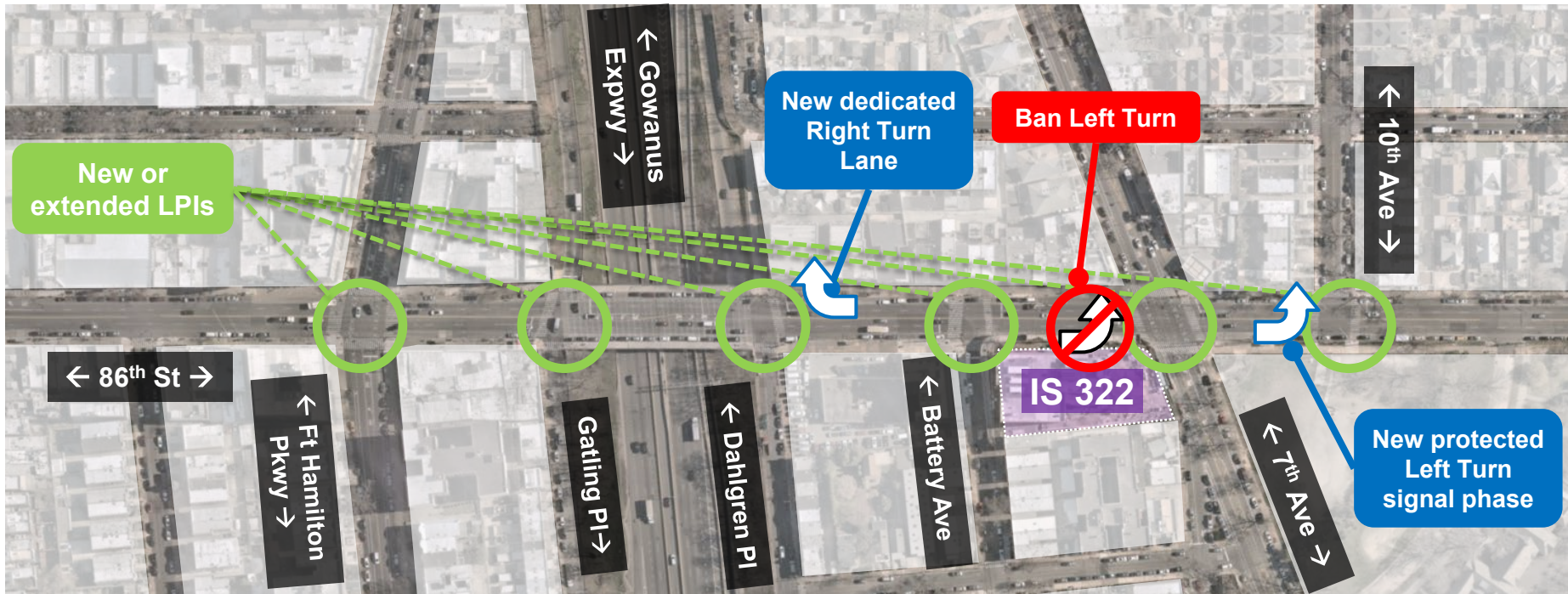
Bike Box provides safe space for cyclists to cross over 7<sup>th</sup> Ave

Concrete curb extension slows turns and reduces crossing distance



# 86<sup>th</sup> St, Ft Hamilton Pkwy to 10<sup>th</sup> Ave

## Proposal: Signal Timing Adjustments



# 7<sup>th</sup> Ave, 86<sup>th</sup> St to Poly PI

## Parking Impacts

**Total Impact:  
-28 spots**



# 7<sup>th</sup> Ave, 86<sup>th</sup> St to Poly PI

## Proposal Summary

Narrow roadway to reduce speeding and reckless driving

Upgrade standard bike lanes to parking-protected to improve safety for cyclists and other road users

Change street directions to improve traffic flow near new school and accommodate safety improvements

Close slip lanes to add pedestrian space and reduce crossing distances

Install bus boarding islands to improve bus loading

Improve signal timing along 86th St and add or extend LPs



# 7<sup>th</sup> Ave, 86<sup>th</sup> St to Poly PI

## Truck Parking

Streets with upgraded infrastructure tend to be less desirable for long-term truck parking

DOT will ask 68th Pct for additional enforcement

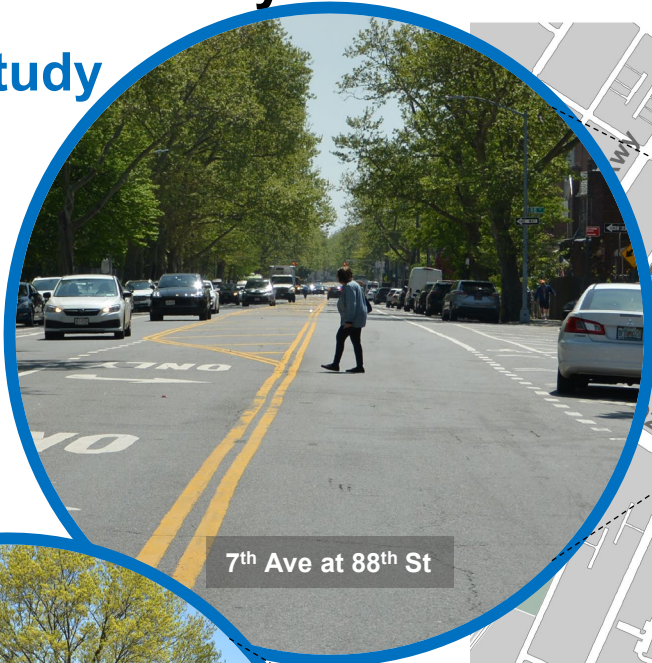
Alternatively, full removal of parking lane on east side would prevent truck parking and allow for barrier-protection of bike lane



# 7<sup>th</sup> Ave, 86<sup>th</sup> St to Poly PI

Traffic Control Studies pending to add new traffic controls

## Pending Study



7<sup>th</sup> Ave at 88<sup>th</sup> St

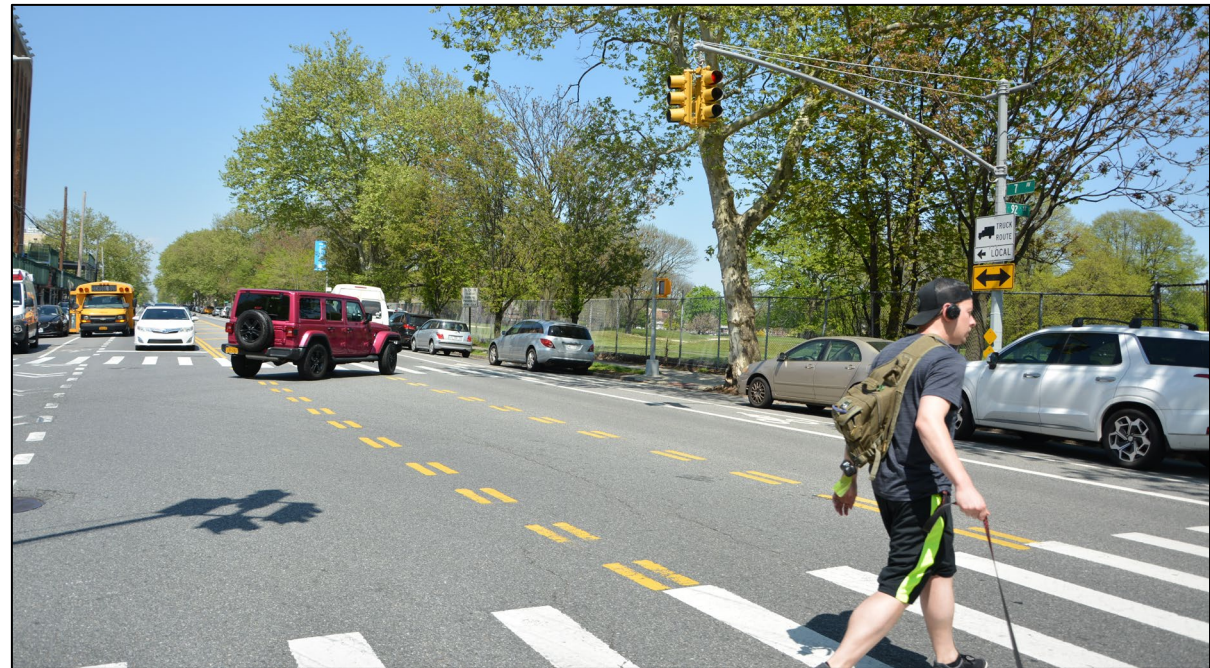


Poly PI at park entrance



# Thank You!

Questions?



Contact: NYCDOT BK Borough Commissioner's Office – (646) 892-1350



NYCDOT



nyc\_dot



nyc\_dot



NYCDOT