

# 7<sup>th</sup> Avenue, Bay Ridge Traffic Calming Project



Presentation for Community Board 10  
Commissioner Janette Sadik-Khan  
Office of Research, Implementation, and Safety

# Why are we here?

---

- High Incidence of Speeding
- Excess Roadway Capacity
- Opportunity to redesign the roadway to accommodate all users



# Project Intentions

---

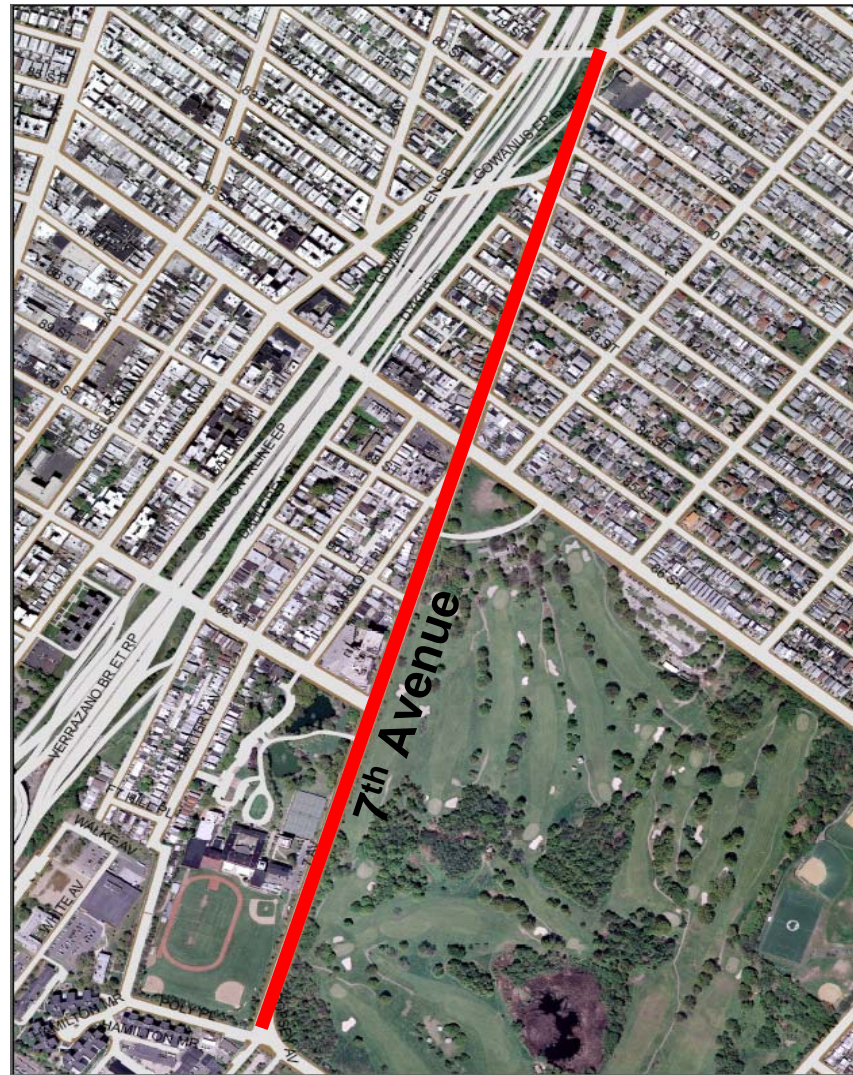
1. Redesign the roadway to accommodate all users
2. Reduce speeds by reducing number of moving lanes
3. Improve bicycle access by connecting to existing bike routes



Grand Street, Manhattan: 2-way street with Bicycle Lane, a Moving Lane, Turning Lanes and Center Painted Median

# Project Scope

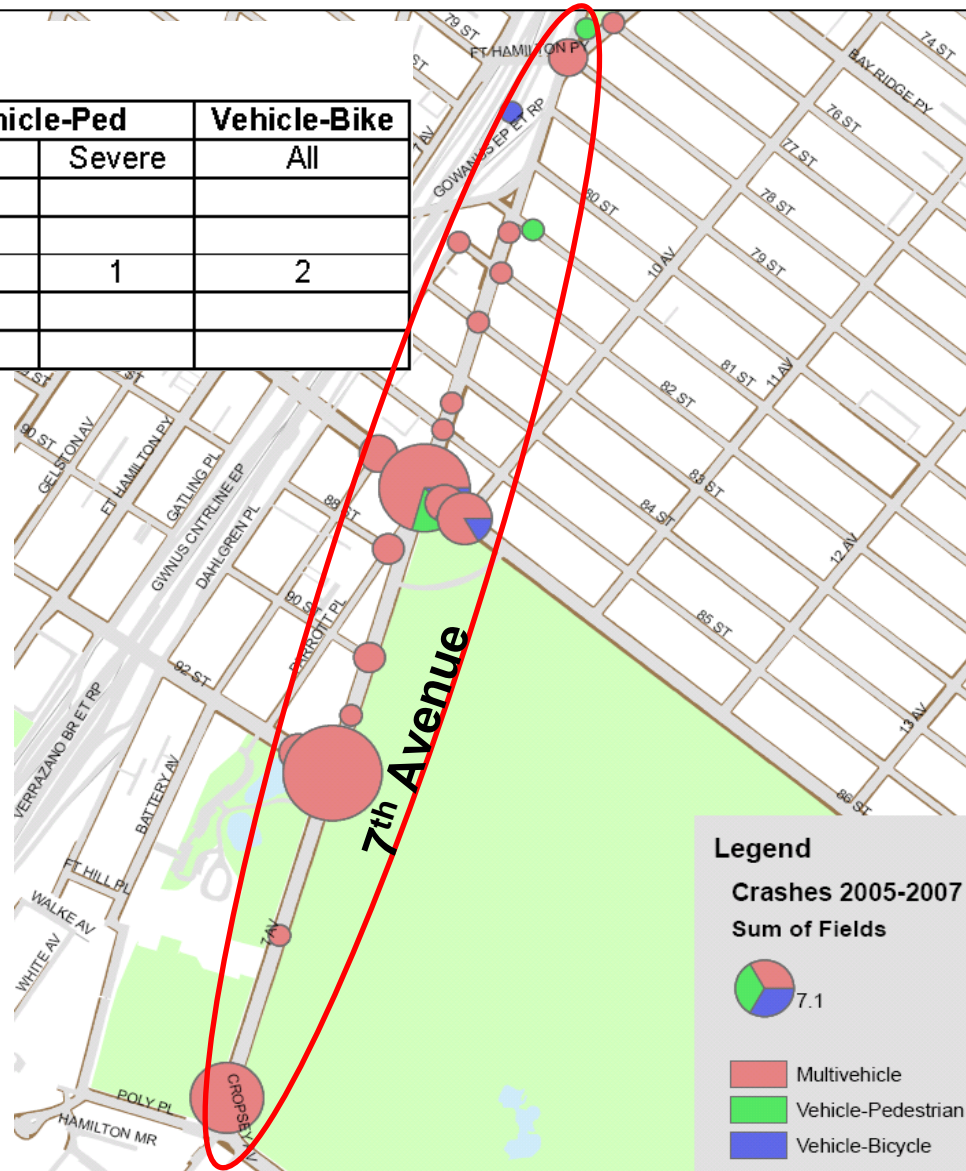
- 78<sup>th</sup> St to Poly Place
- Residential corridor in Dyker Heights and Bay Ridge
- Major intersections at Fort Hamilton Parkway, 86<sup>th</sup> St, 92<sup>nd</sup> St, and Poly Place



# Safety Concerns: Collisions

7th Avenue Collisions 2005-2007

	Total	Multivehicle	Vehicle-Ped		Vehicle-Bike
		All	All	Severe	All
Fort Hamilton/78th St	4	3	1		
82nd St	2	1	1		
86th St	18	12	3	1	2
92nd St	20	20			
Poly Place	11	11			



# Safety Concerns: Speeding

---

- When a pedestrian is struck
  - At 20 mph = 5% chance of dying
  - At 30 mph = 45% chance of dying
  - At 40 mph = 85% chance of dying

	Northbound		Southbound	
	85th Percentile Speed (mph)	% speeding	85th Percentile Speed (mph)	% speeding
81st to 86th St	38	64	36	53
86th to 92nd St	40	38	40	40
92nd St to Poly PI	38	54	38.2	48

NYC 30mph speed limit

# What's the Plan?

---

- Remove one moving lane in each direction

Narrower Streets = Slower Speeds

## 1. Create median buffer with left turn bays

- Provide traffic calming
- Northbound protected left turn at 92 St

## 2. Install 5' bike lanes

- Further restrict roadway
- Add underserved area to bike network

## 3. Calm intersection with Gowanus off ramp at 78 St

- Reduce rightward weave near PS127

Grand Street, Manhattan

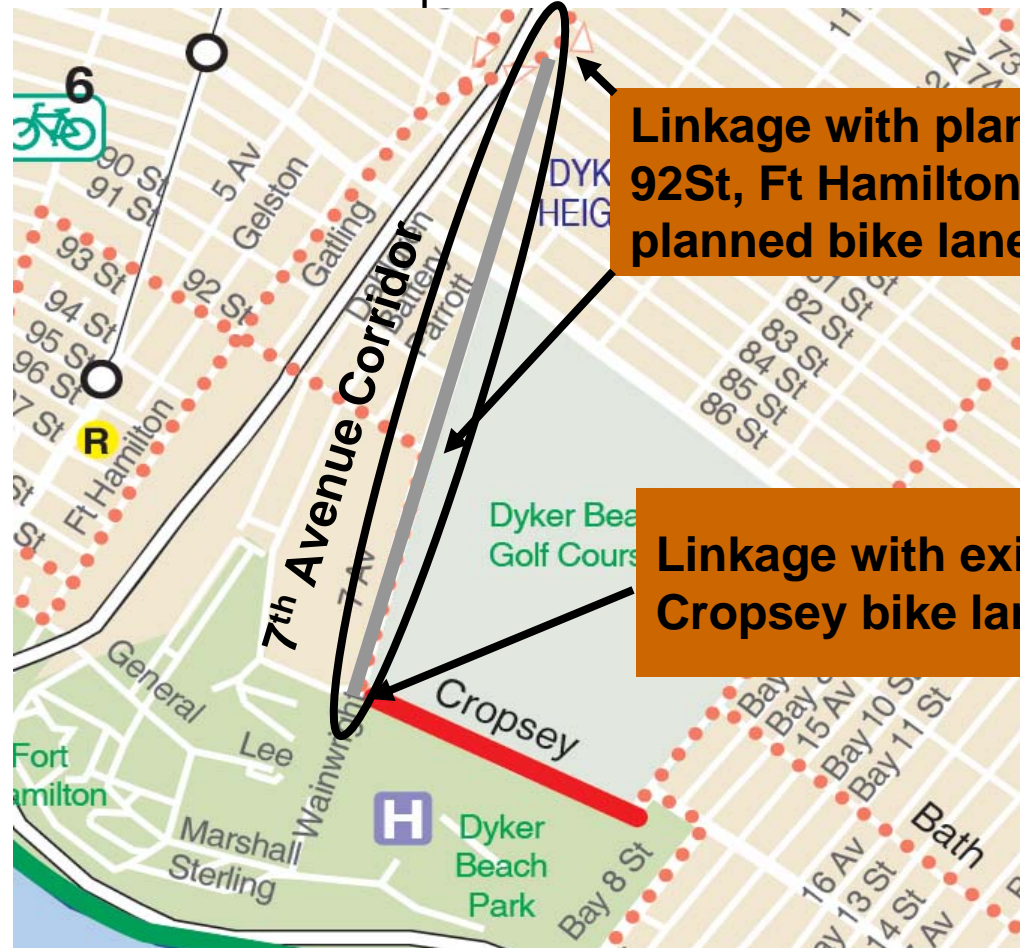


Planned Design: Widened median with Class 2 Bike Lane 7

# Why Bike Lanes?

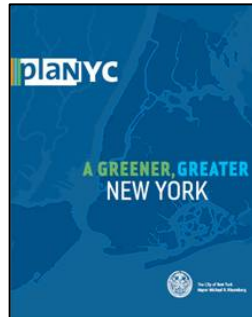
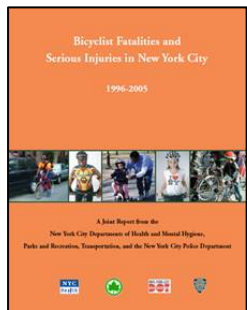
- Enhance Speed Reduction Goals
- Connect Bay Ridge and Dyker Heights to Bike Network
- Achieve Mayor's Sustainability Goals

NYC bike route map



Linkage with planned 92St, Ft Hamilton Pkwy planned bike lanes

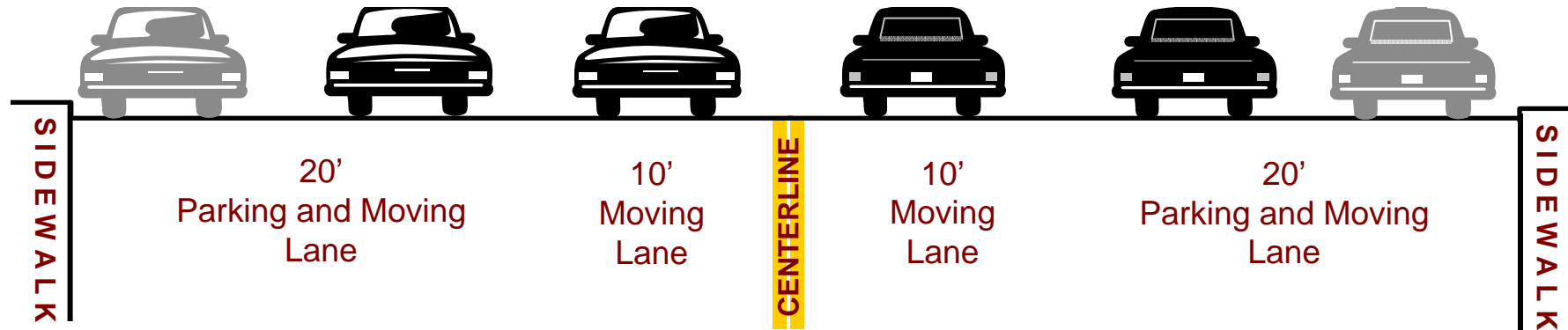
Linkage with existing Cropsey bike lane





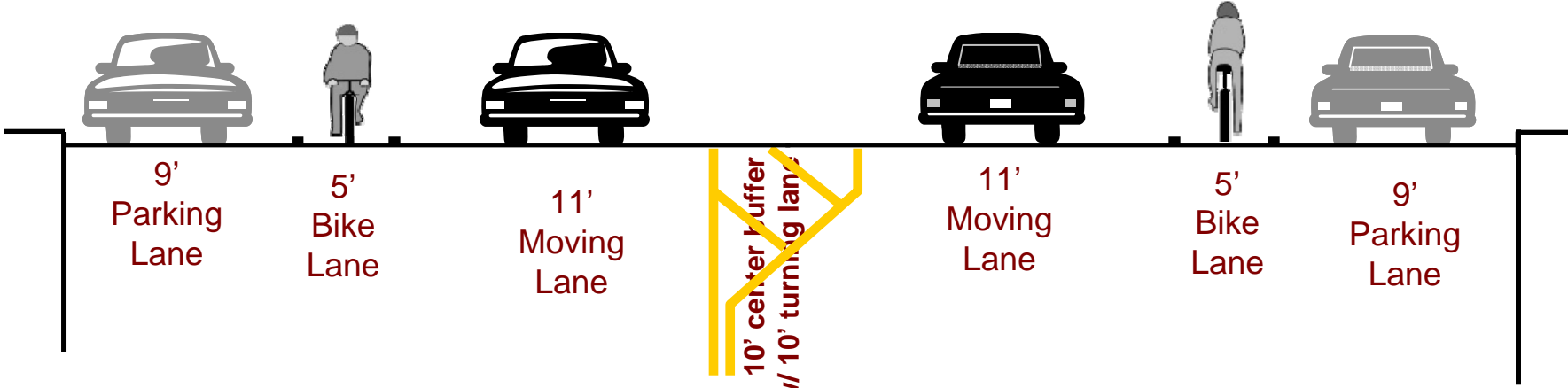
# Existing Conditions

81st St to Poly Place (9 blocks, 0.9 mi) – Excessively Wide (60')

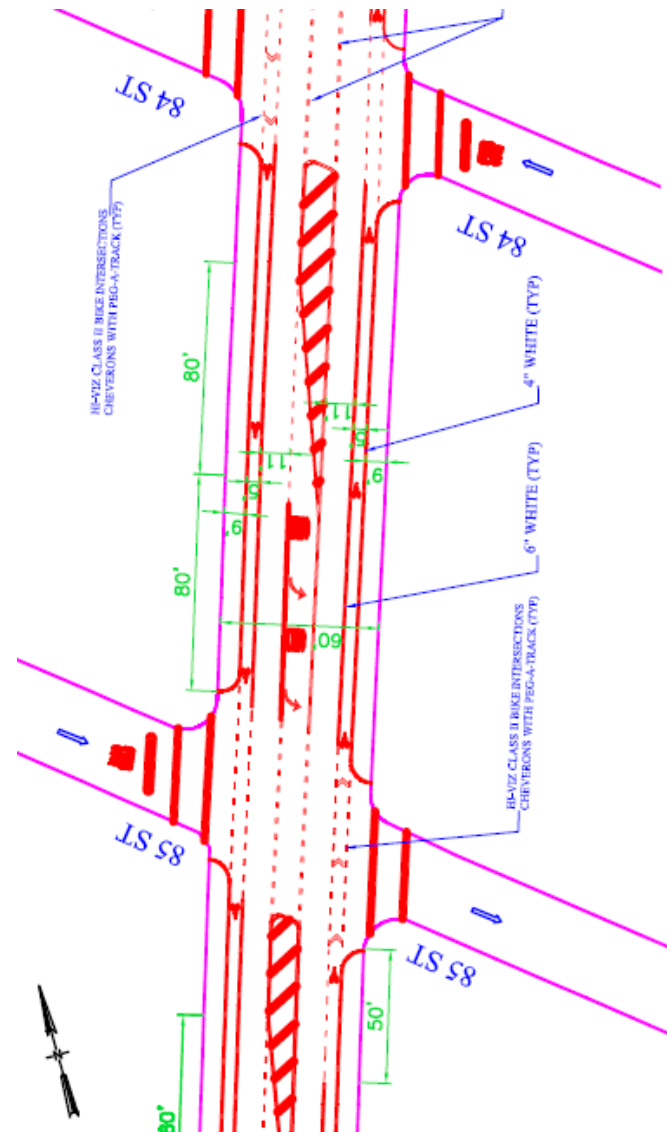


# Proposed Conditions: 81 St to Poly PI

## Road Diet with Bike Lane

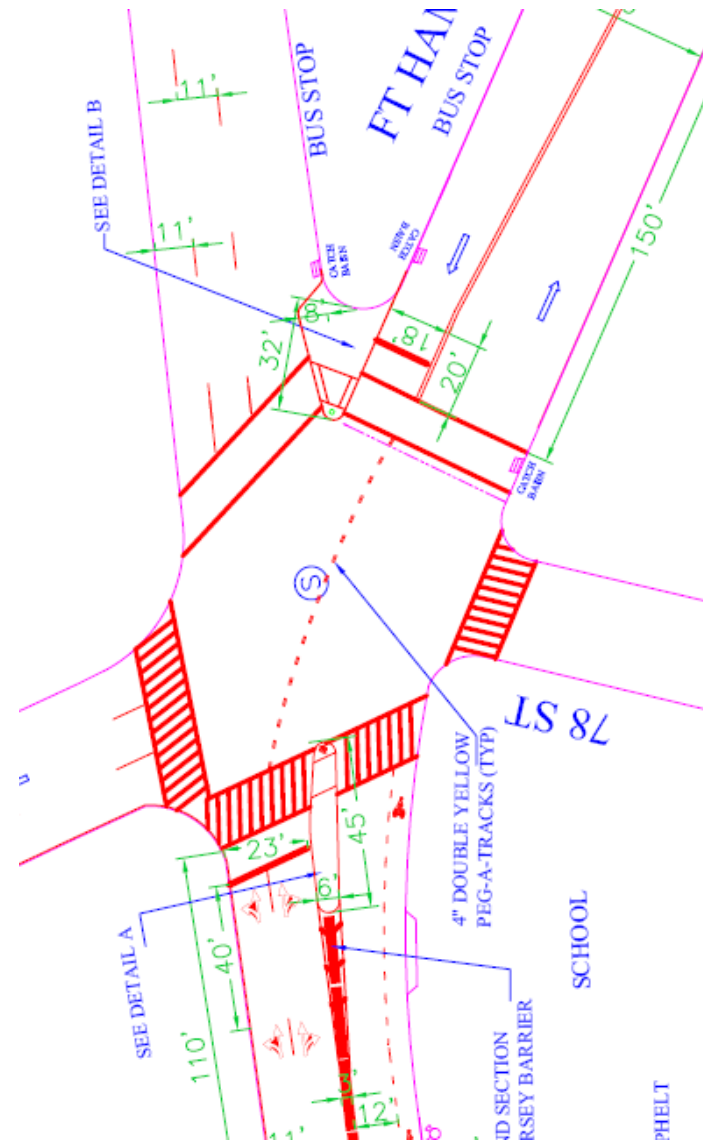
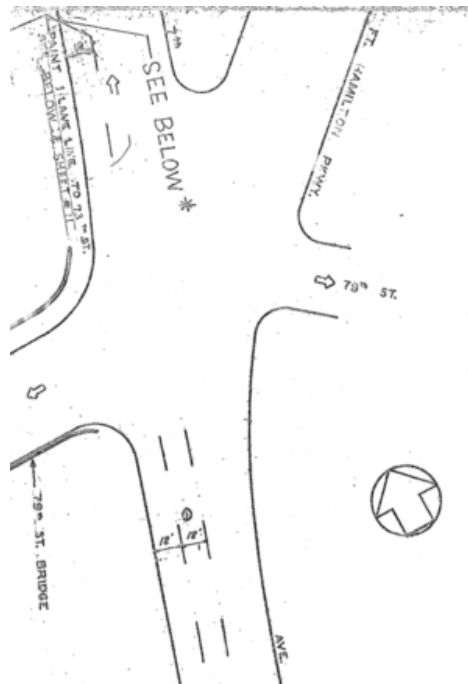


# Road Diet: 81 St to Poly PI



# Separate phases at Fort Hamilton Pkwy

- Northbound traffic from the Gowanus Expressway and 7<sup>th</sup> Ave will have their own roadways and phases.
- 2 new pedestrian refuges



# Questions?

---

## Proposed Condition – 7<sup>th</sup> Ave: 81<sup>st</sup> St to Poly Pl

