



7th Avenue, 86th Street to Poly Place

School Safety Improvements

Presentation for CB 10 | June 12, 2024

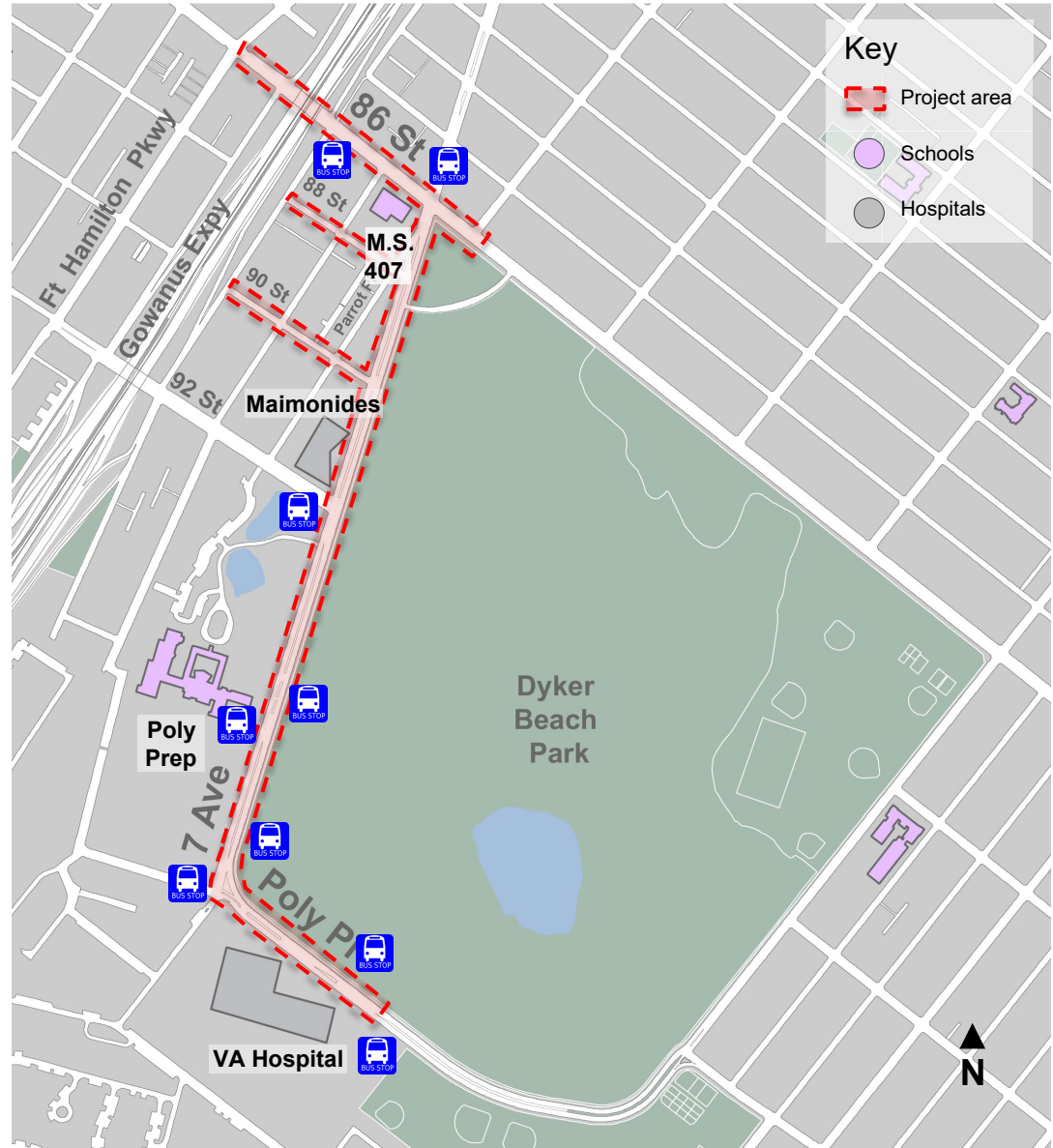
Background

1

7th Ave, 86th St to Poly PI

Project Area

- M.S. 407 opening Fall 2024 at 7th Ave and 86th St with ~600 students
- Safety concerns from community and elected officials
- Bus Routes:
 - B8 and B70 on 7th Ave
 - B1, X28, X38 on 86th St
- Local Truck Routes:
 - 7th Ave north of 92nd St
 - 86th St



7th Ave, 86th St to Poly PI

Safety Data (2019-2023)

- 110 total injuries
- 2 severe injuries
- 1 fatality
- 15% of injuries were pedestrians
- 59% of pedestrians injured were crossing with a signal

Injury Summary, 2019-2023 (5 Years)

Type	Total Injuries	Severe Injuries	Fatalities	KSI
Pedestrian	17	0	0	0
Bicyclist	8	1	0	1
Motor Vehicle	81	1	1	1
Other Motorized	4	0	0	0
Total	110	2	1	2

Source: Fatalities: NYCDOT, Injuries: NYPD Forms database. KSI: Persons Killed or Severely Injured

Note: Map may not include total or severe injuries that occurred at midblock locations. Data is based off of NYSDOT/NYS DMV/NYPD crash and injury data available as of May 2024.

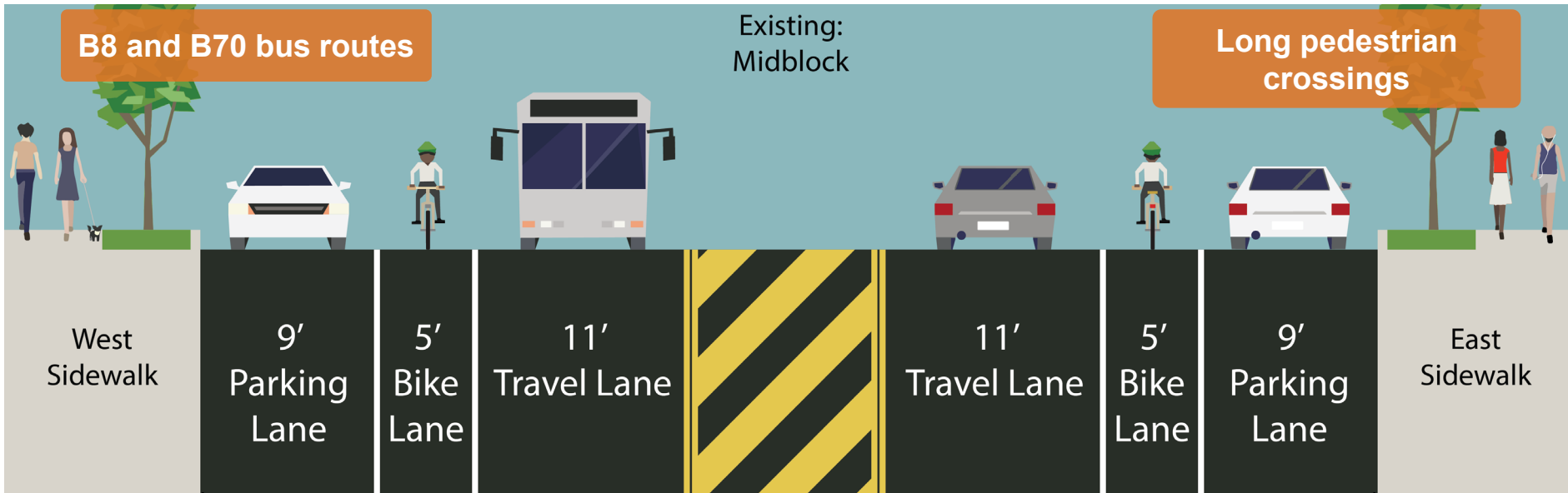


Existing Conditions

2

7th Ave, 86th St to Poly PI

Existing Conditions



7th Ave, 86th St to Poly Pl

Existing Conditions

Long pedestrian crossings



7th Ave and 88th St, Parrot PI

Existing Conditions: Slip Lane

Slip Lane allows fast turns and creates additional conflict points

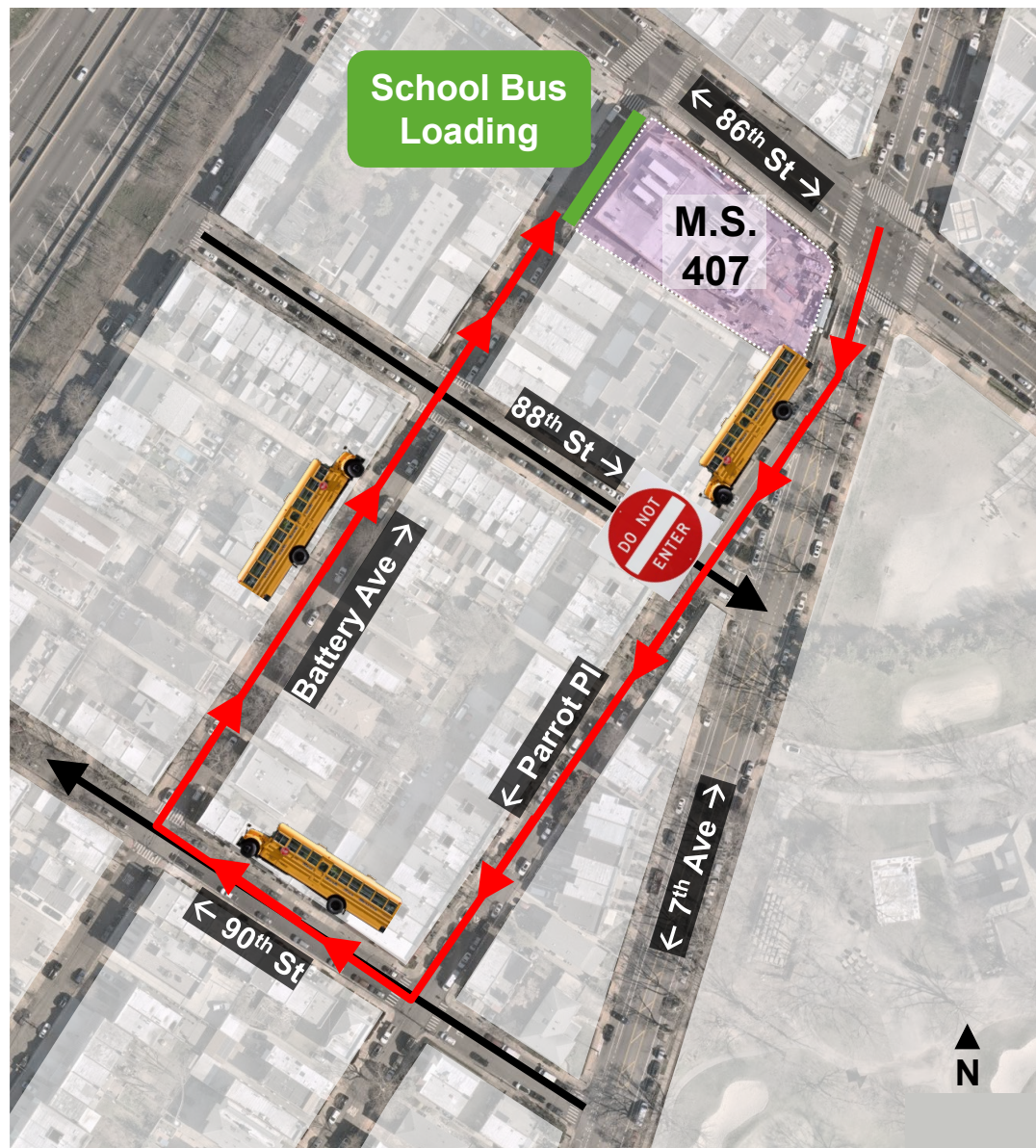
Pedestrians forced to walk out of their way



7th Ave, 86th St to Poly PI

School Bus Route

Current one-way configuration of 88th St makes school buses go out of the way to get to loading area of new school



7th Ave, 86th St to Poly PI

Existing Conditions

Concerns about
reckless driving



Evidence of
donuts

7th Ave and Poly PI

Existing Conditions

Slip lane allows for fast right turns through crosswalk

Long unprotected pedestrian crossing distances

Painted island is susceptible to illegal parking



86th St

Existing Conditions

High volumes coming
from Gowanus Expwy

Bus Routes:
(B1, X28, X38)

Local Truck Route

Long pedestrian
crossings



7th Ave, 86th St to Poly PI

Existing Conditions: Bus Stops

Bus Stop landing area
inaccessible for people
using wheelchairs,
susceptible to mud



7th Ave, 86th St to Poly Pl

Existing Conditions: Narrow Sidewalk

Sidewalk along the park is only 5' wide, causing many joggers to use the street



7th Ave, 86th St to Poly PI

Existing Conditions: Speeding

100%
of vehicles speeding

**Average speed is
43mph**

**85th percentile speed is
50mph**



Source: Recent speed study conducted North of 92nd St:

7th Ave, 86th St to Poly PI

Existing Conditions: Truck Parking

Long-standing
community complaints

Large trucks illegally
parked for extended
periods



Proposal

3

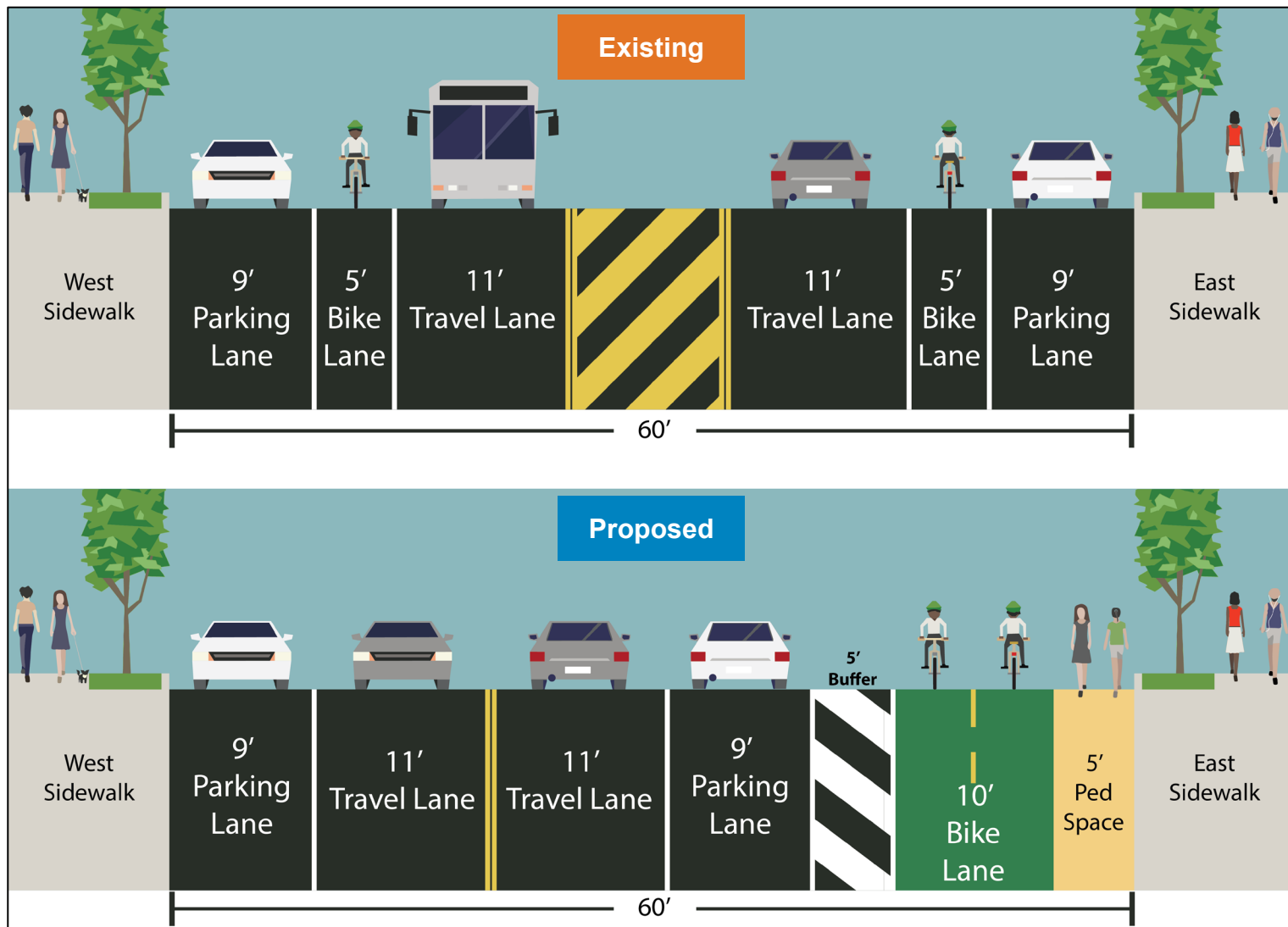
7th Ave, 86th St to Poly PI

Proposal Detail: Midblock

Removal of painted median reduces likelihood of speeding

Painted sidewalk extension provides additional space for walking and jogging along the park

Protected bike lane provides dedicated space for cyclists and reduces conflicts



7th Ave, 86th St to Poly PI

Proposal: Parking- Protected Bike Lane



Upgrade existing standard bike lanes to two-way parking-protected

Traffic calming and speed reduction

Shorter pedestrian crossings next to schools and bus stops



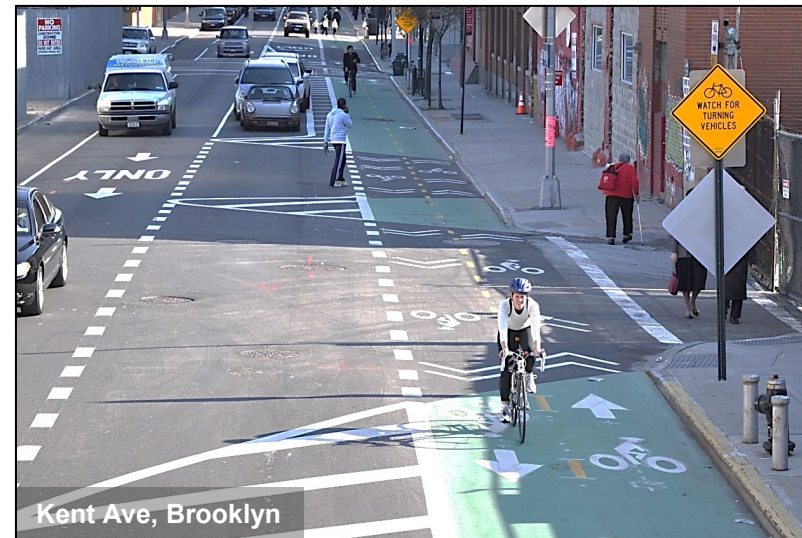
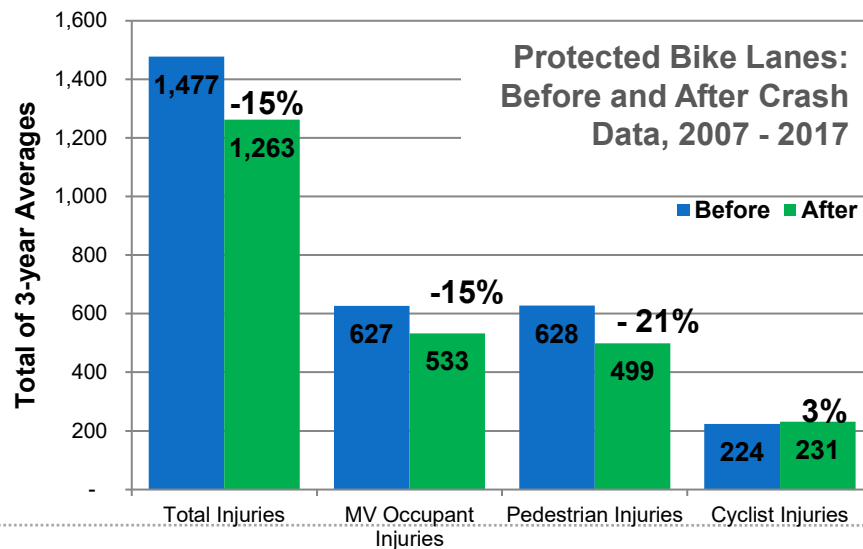
7th Ave, 86th St to Poly PI

Protected Bike Lanes: Safety Data

On NYC streets where protected bike lanes were installed in 2007 – 2017:

- **15% drop** in all crashes with injuries
- **21% drop** in pedestrian injuries

Street designs that include protected bike lanes increase safety for all users

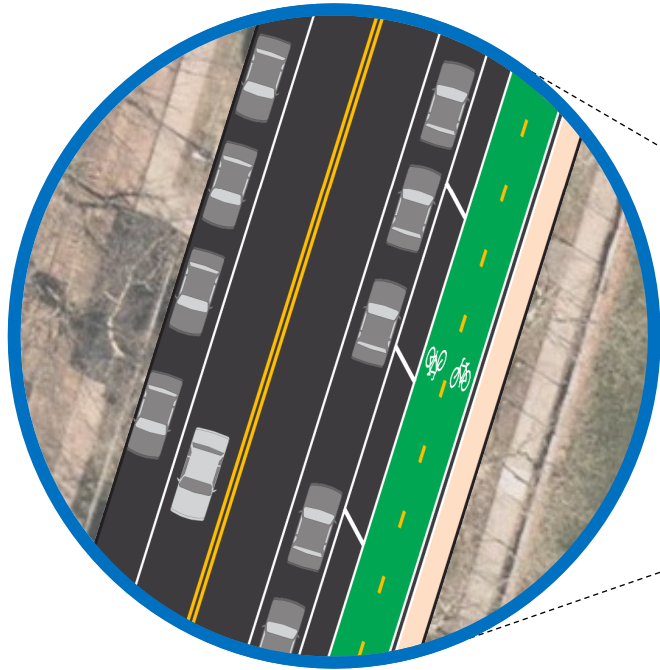


Data from 25 separate protected bicycle lane projects installed from 2007-2014 with 3 years of after data. Includes portions of 1 Ave, 2 Ave, 8 Ave, 9 Ave, Broadway, Columbus Ave, Hudson St, Lafayette St / 4 Ave, Sands St, Allen/Pike St, Kent Ave, Prospect Park West, Flushing Ave, Bruckner Blvd & Longfellow Ave, Imlay St / Conover St, Paerdegat Ave. Only sections of projects that included protected bike lanes were analyzed.

Source: NYPD AIS/TAMS Crash Database

7th Ave, 86th St to Poly PI

Proposal Detail: Midblock

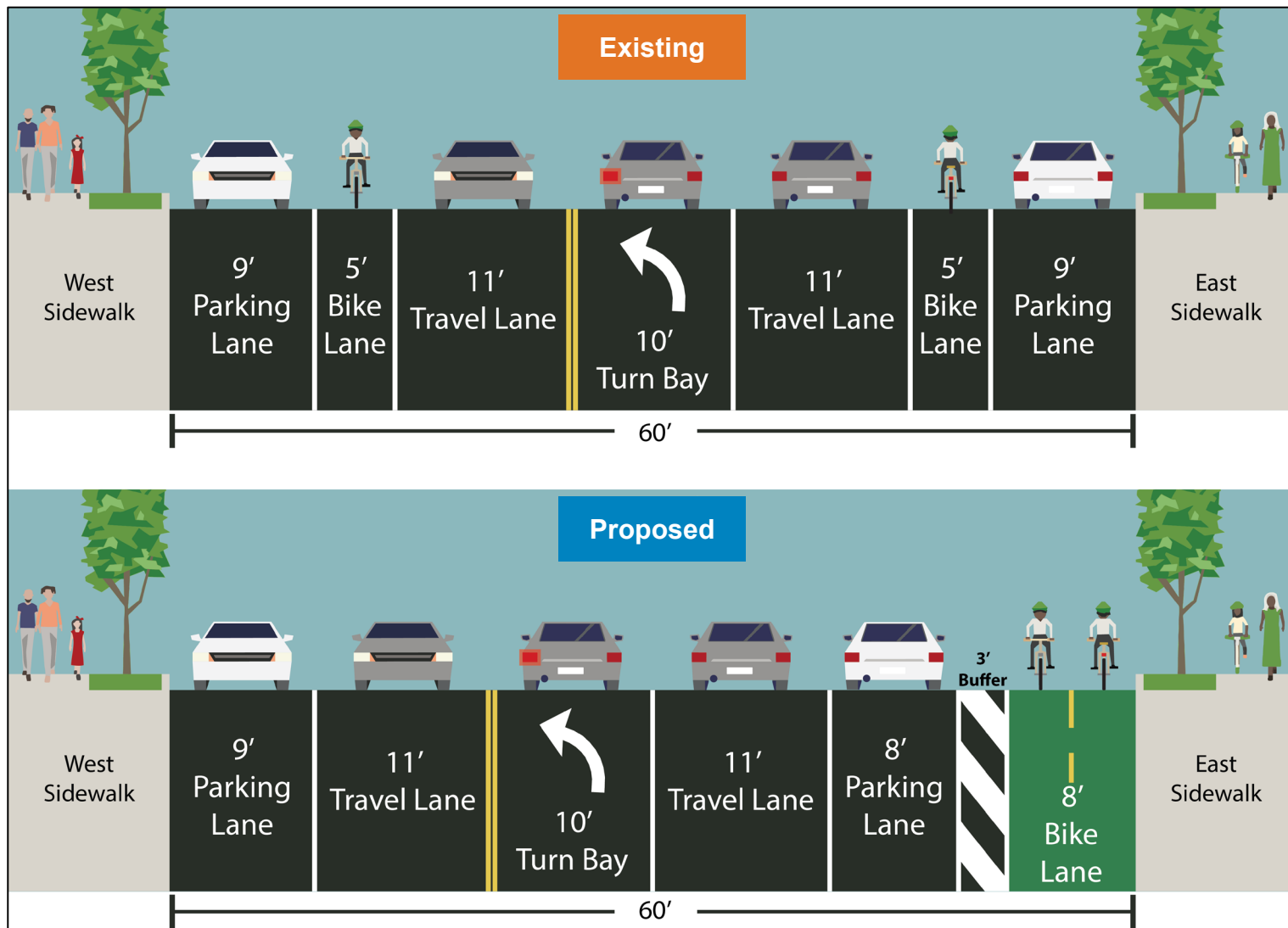


- Key
- Project area
 - Schools
 - Hospitals

7th Ave, 86th St to Poly PI

Proposal Detail: Turn Bays

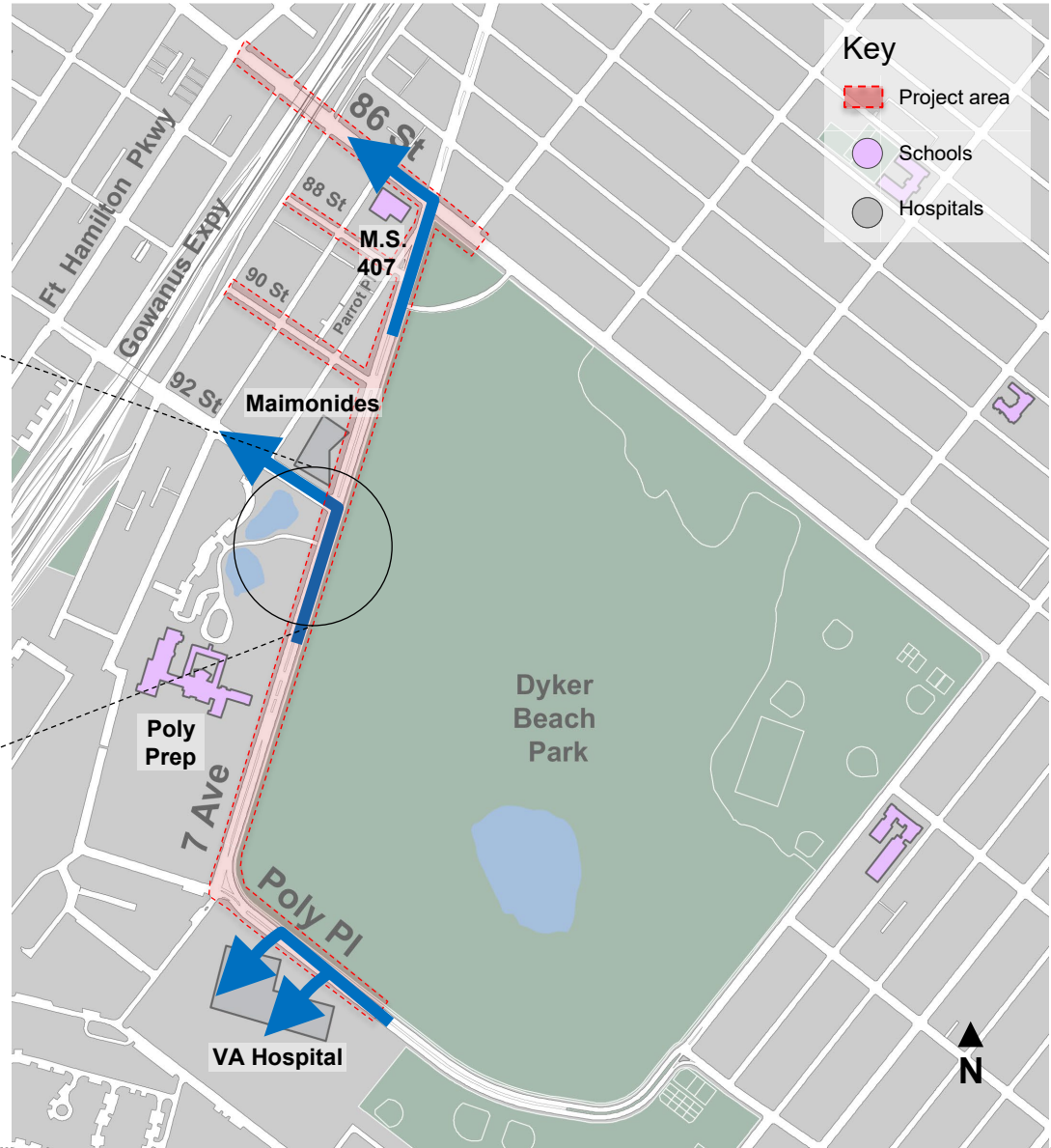
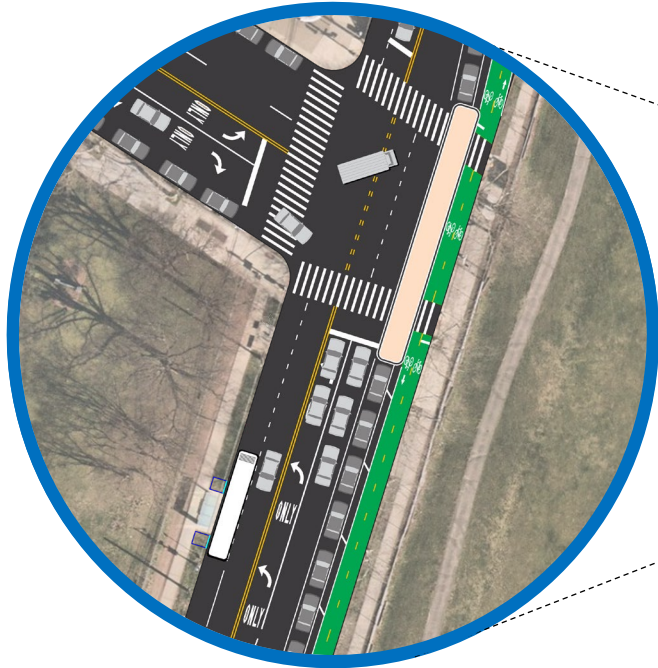
Left Turn Bays maintained where needed to reduce backups and clarify traffic movements



Protected bike lane provides dedicated space for cyclists and reduces conflicts

7th Ave, 86th St to Poly PI

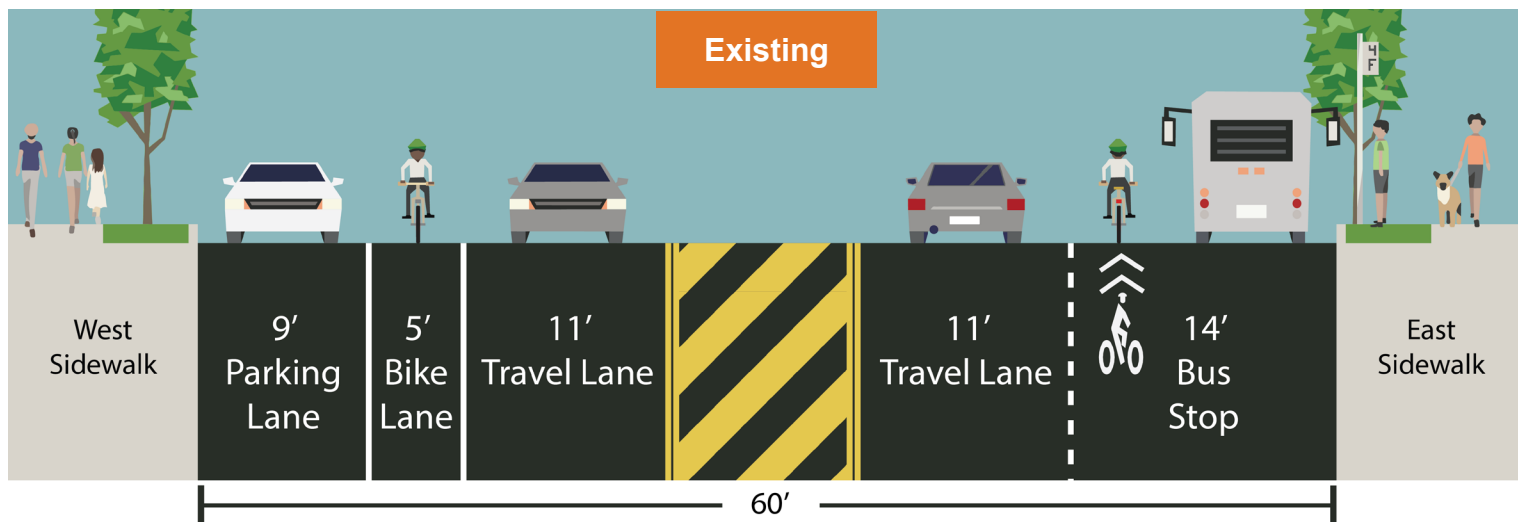
Proposal Detail: Turn Bays



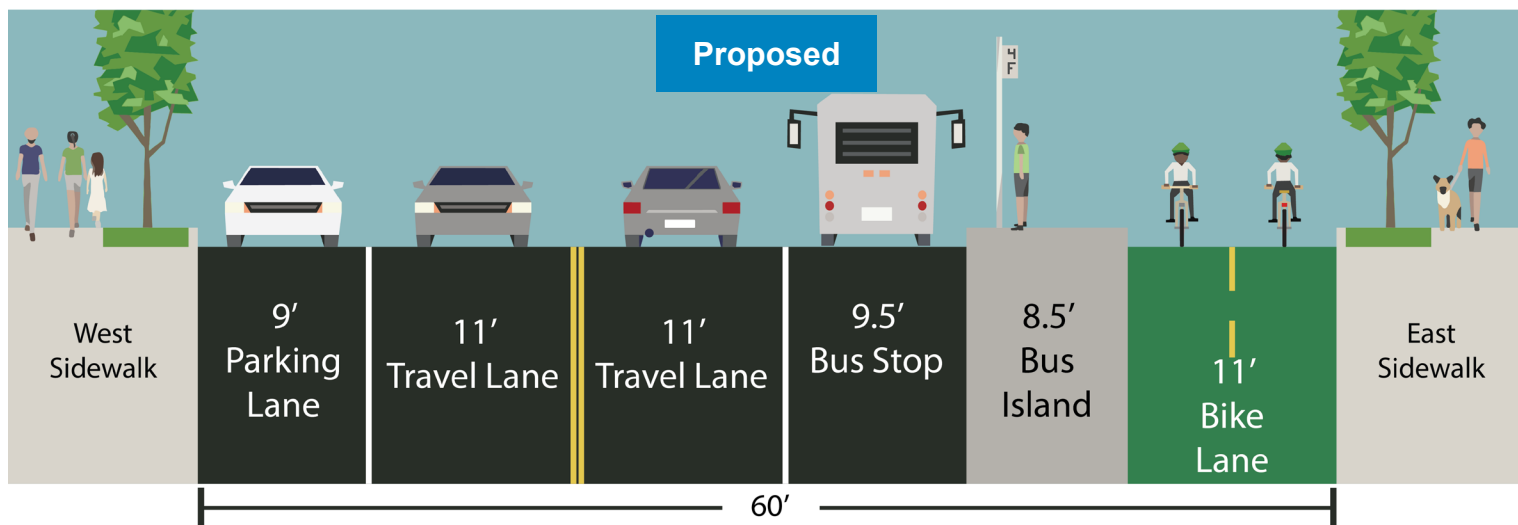
7th Ave, 86th St to Poly PI

Proposal Detail: Bus Stops

Bus Boarding Island provides accessible space for bus loading and removes conflicts between bikes and buses

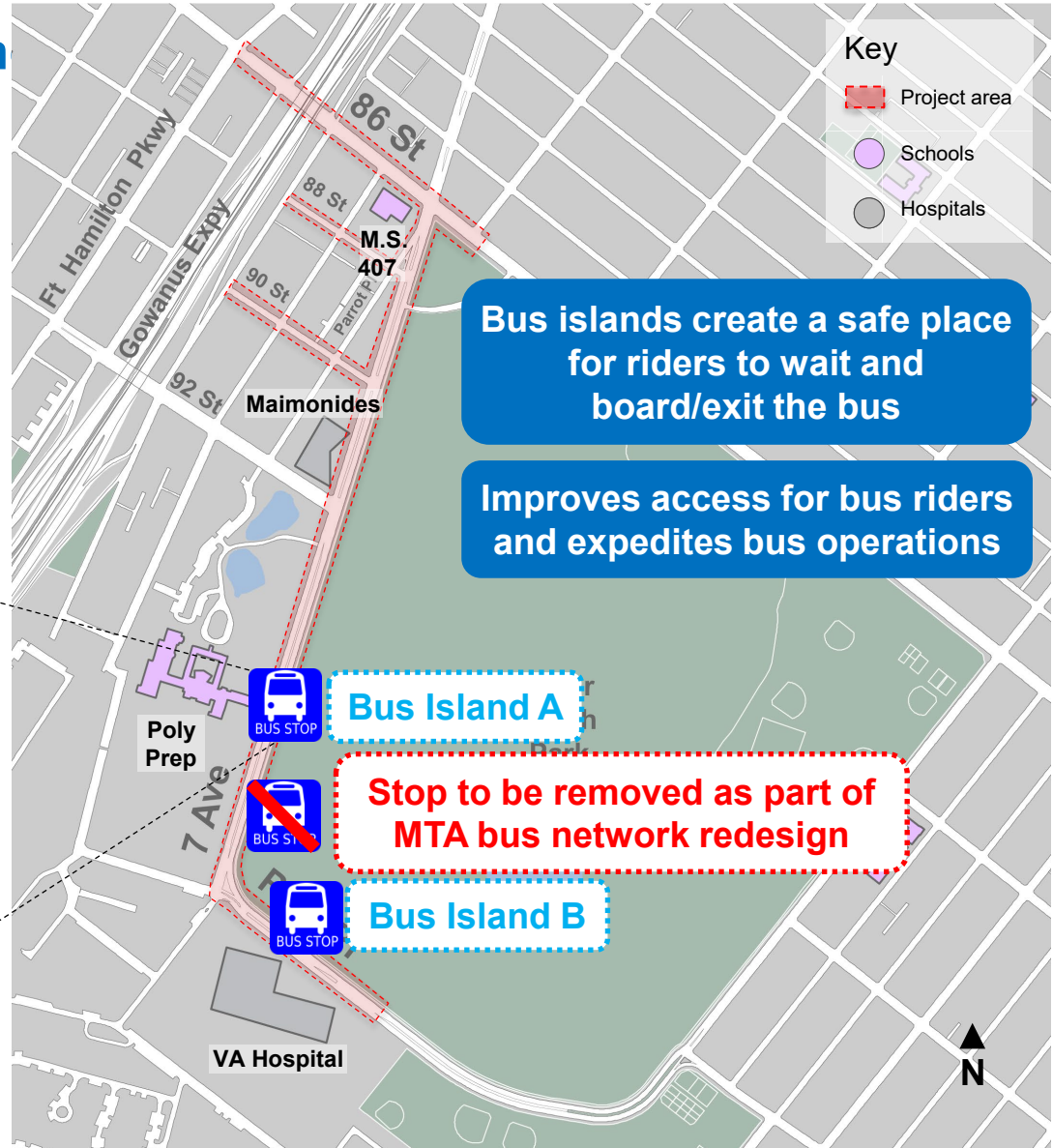


Protected bike lane provides dedicated space for cyclists and reduces conflicts



7th Ave, 86th St to Poly PI

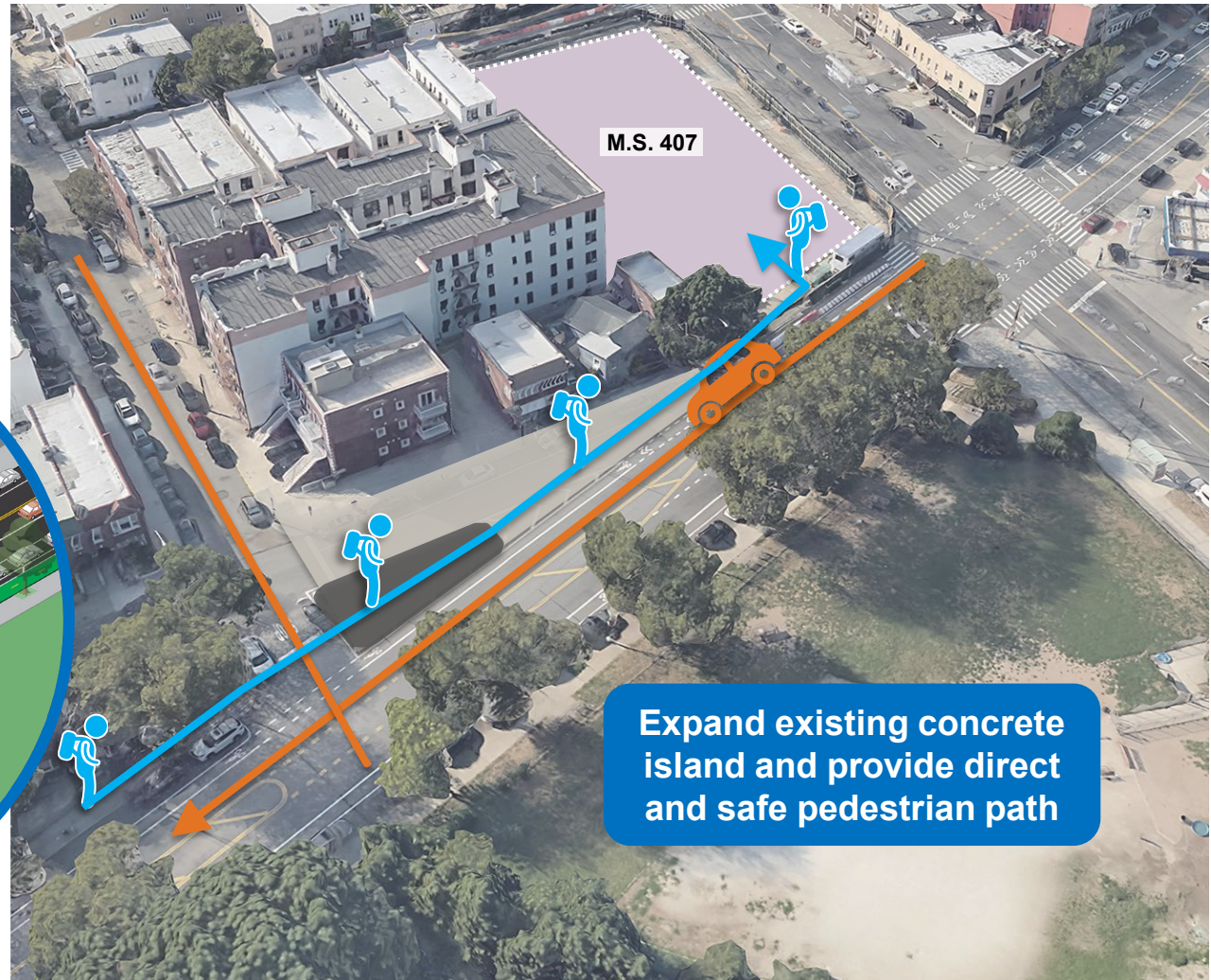
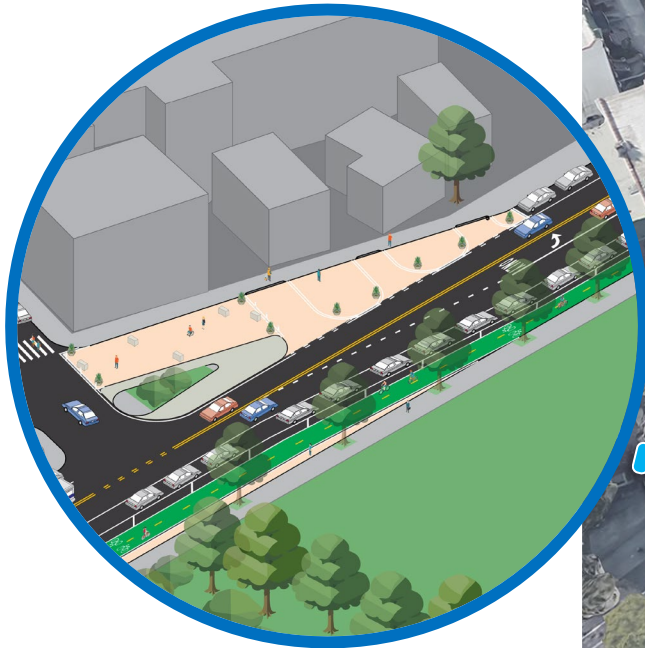
Proposal Detail: Bus Boarding



7th Ave, 86th St to Poly PI

Proposal: Slip Lane Closure

Close Parrot PI slip lane
between 7th Ave and 88th St
with driveway access
maintained



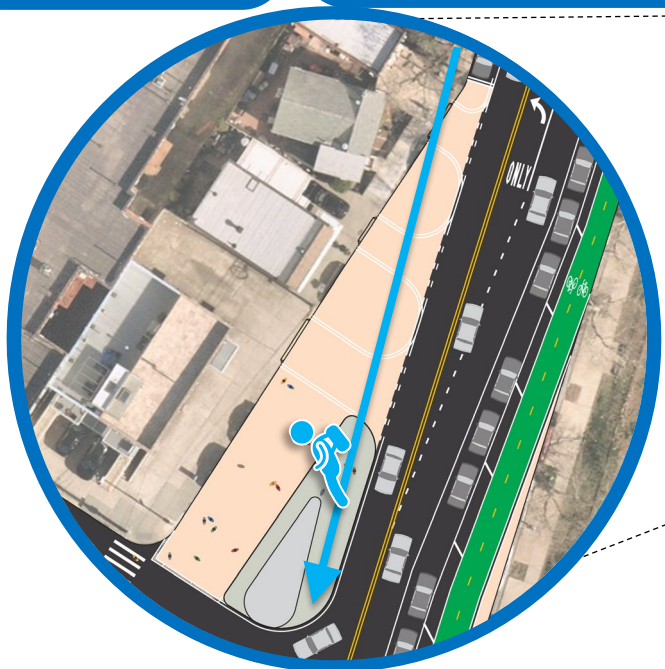
Expand existing concrete
island and provide direct
and safe pedestrian path

7th Ave, 86th St to Poly PI

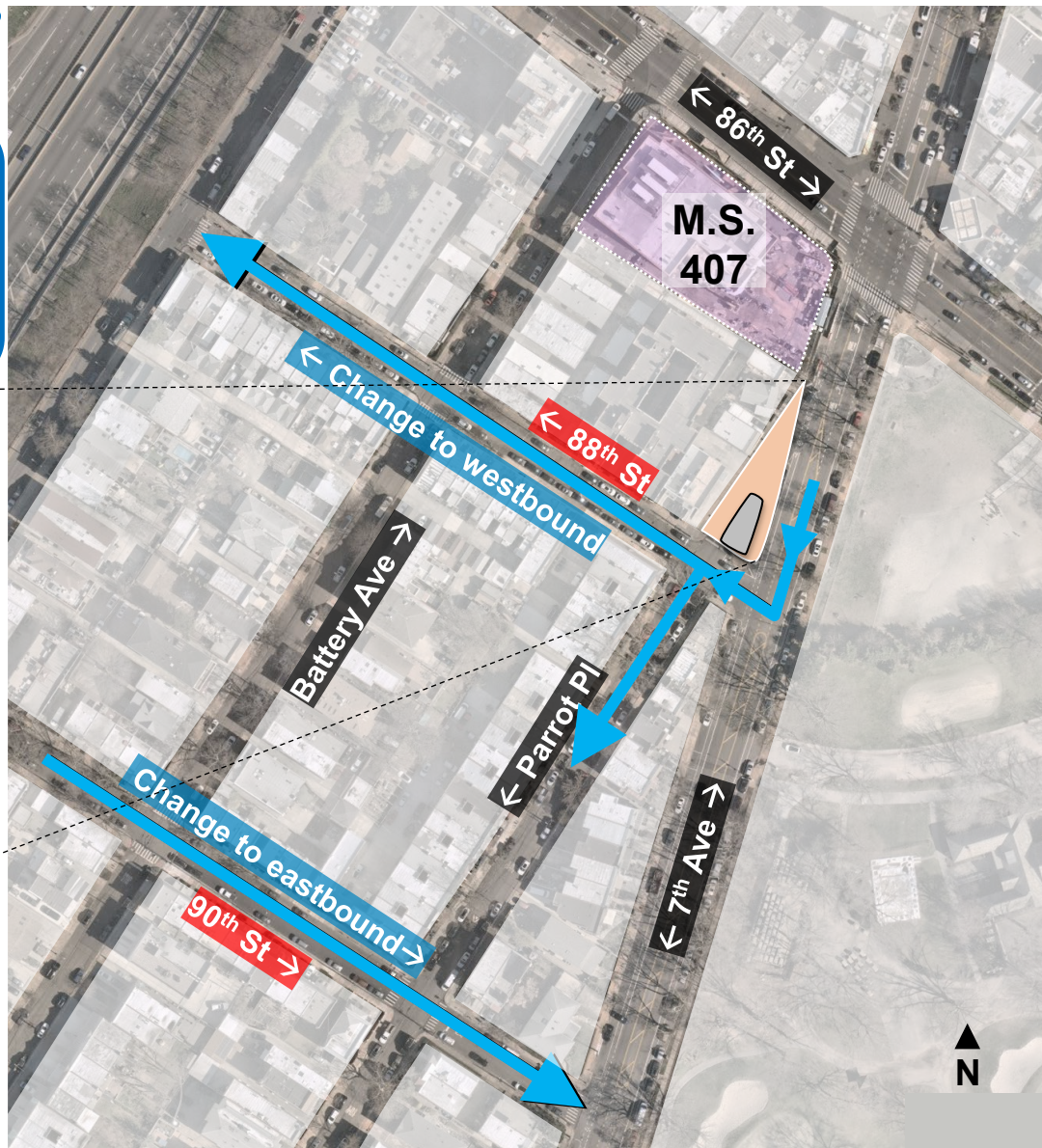
Proposal: Direction Changes and Slip Lane Closure

Convert 88th St to Westbound and 90th St to Eastbound

Close Parrot PI slip lane between 7th Ave and 88th St with driveway access maintained



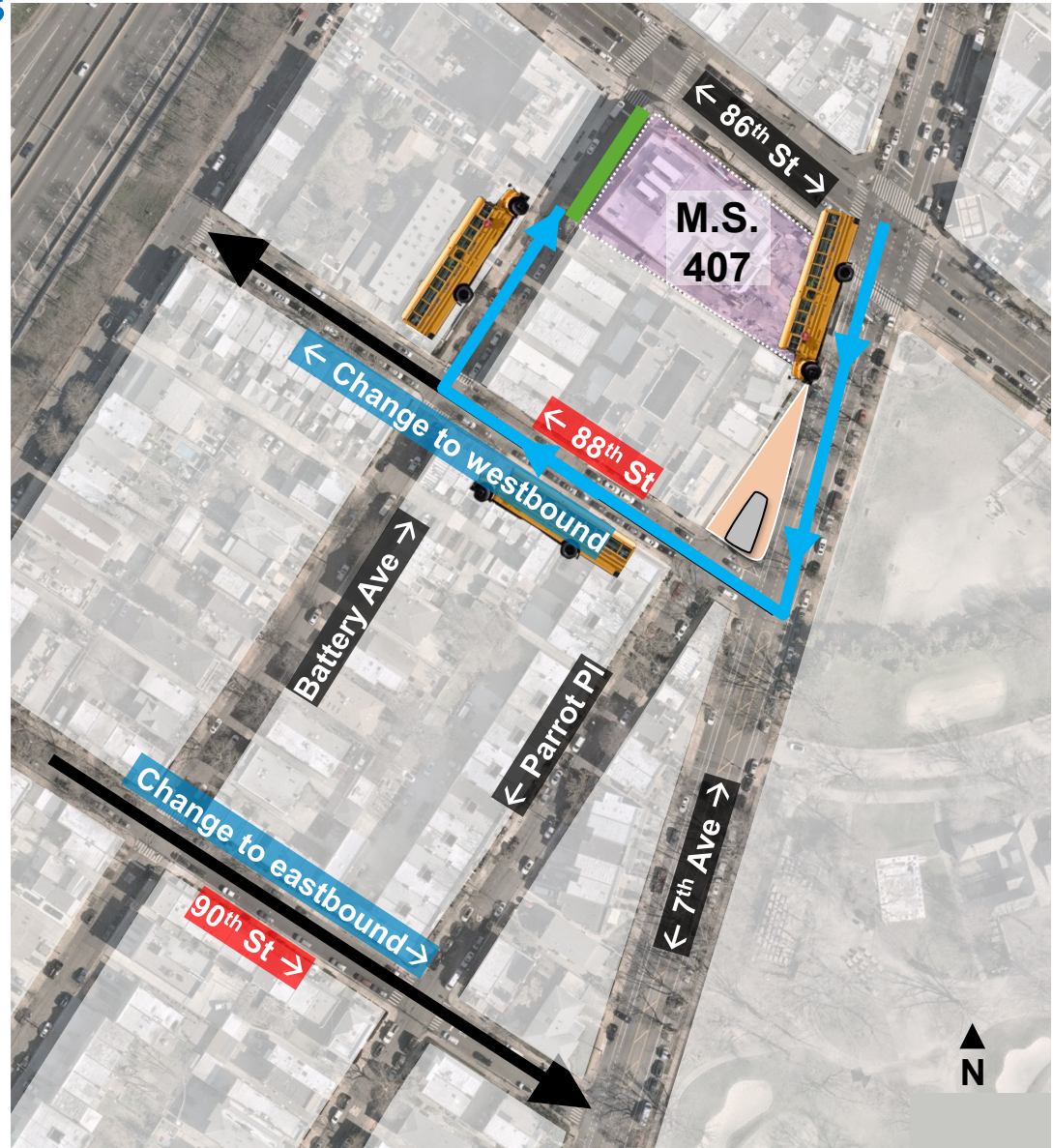
Expand existing concrete island and provide direct and safe pedestrian path



7th Ave, 86th St to Poly PI

Proposal: Direction Changes and Slip Lane Closure

88th St conversion will give school buses shorter route to loading zone at MS 407



7th Ave, 86th St to Poly PI

Proposal Detail: Slip Lane Closure



Driveway access
maintained through
closed slip lane

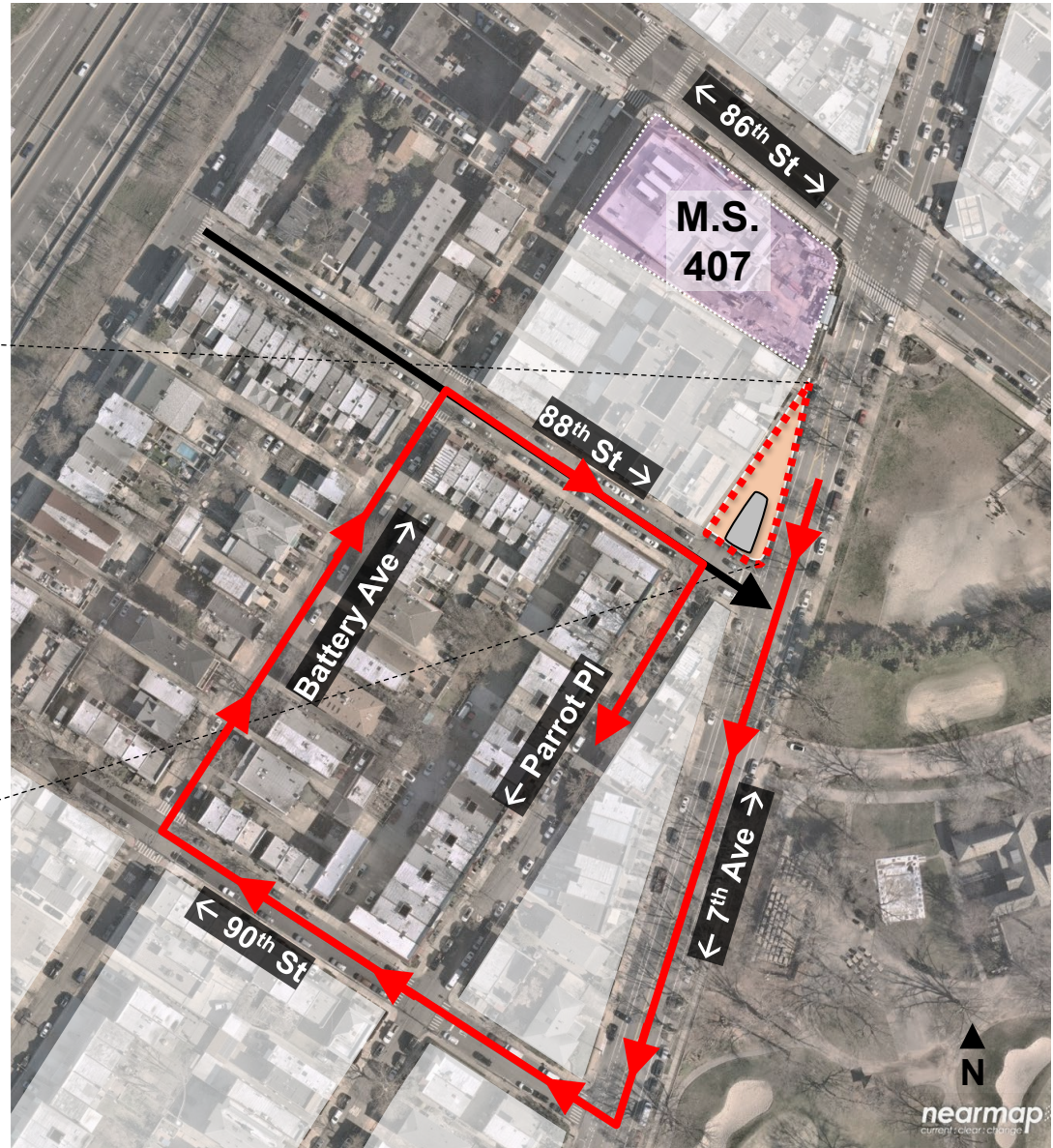


Banker's Anchor Plaza, N 15th St, BK

7th Ave, 86th St to Poly PI

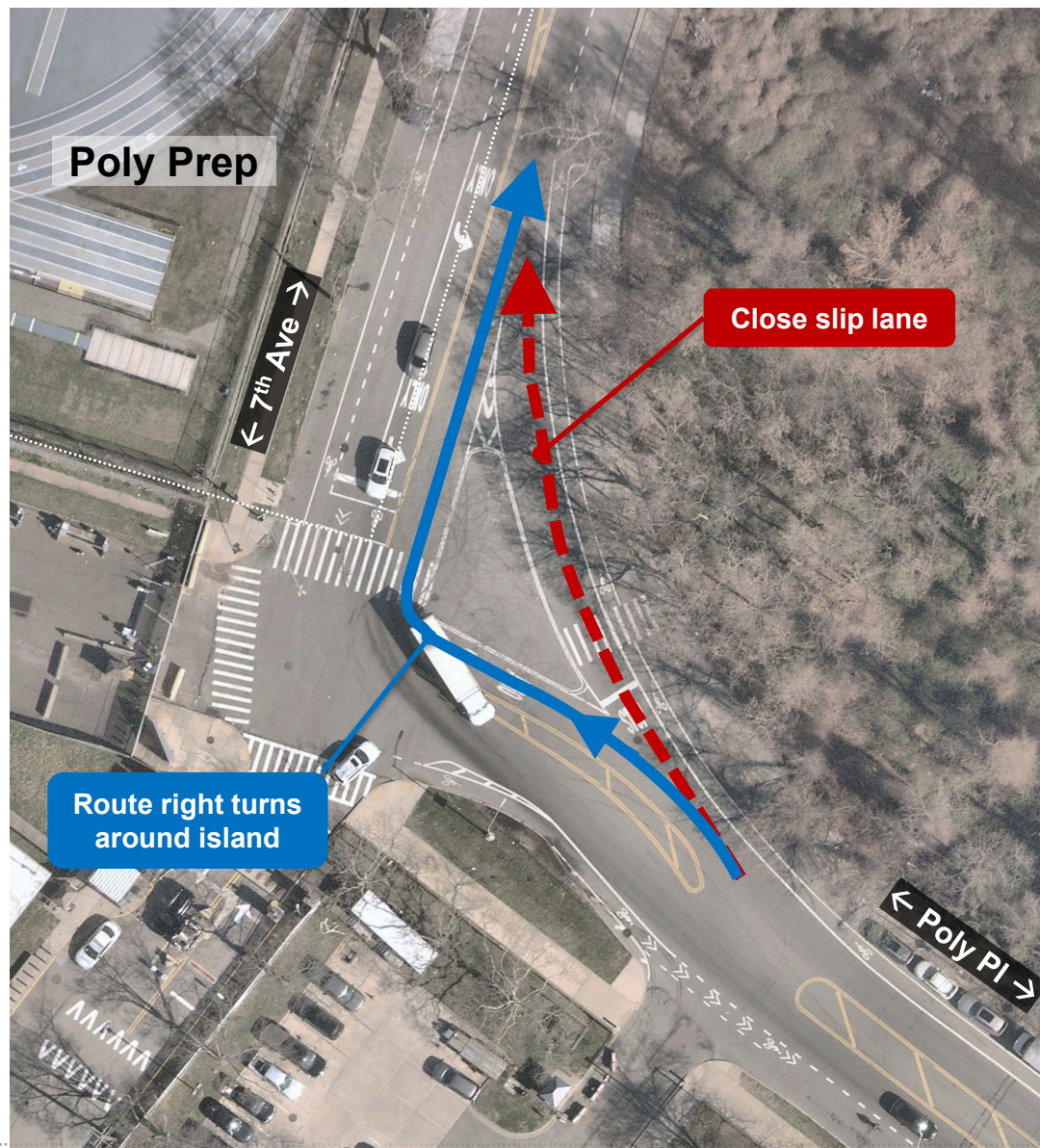
Slip Lane Closure

Closing the slip lane is
infeasible with current
street configuration



7th Ave and Poly PI

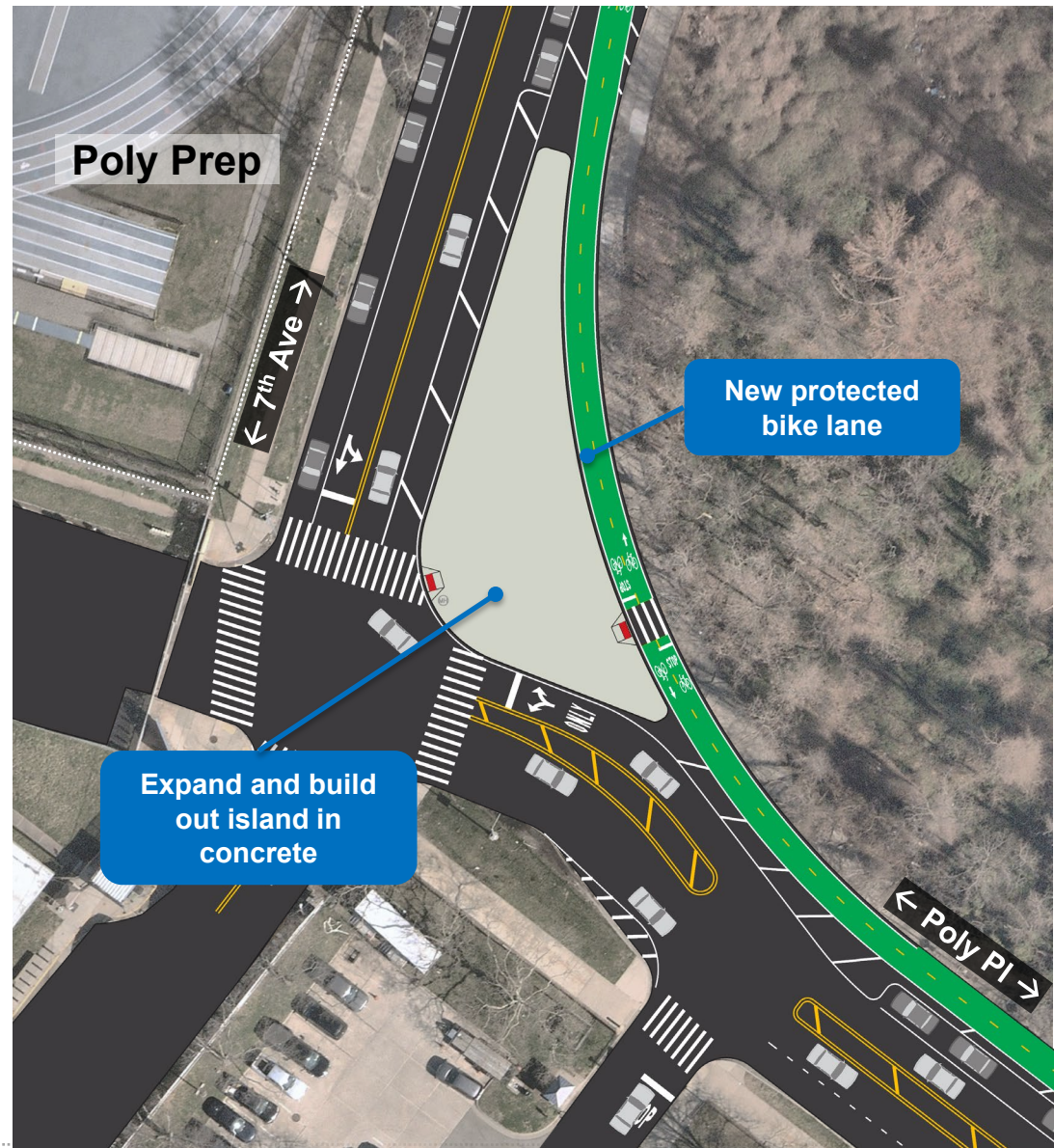
Proposal Details: Slip Lane Closure



7th Ave and Poly PI

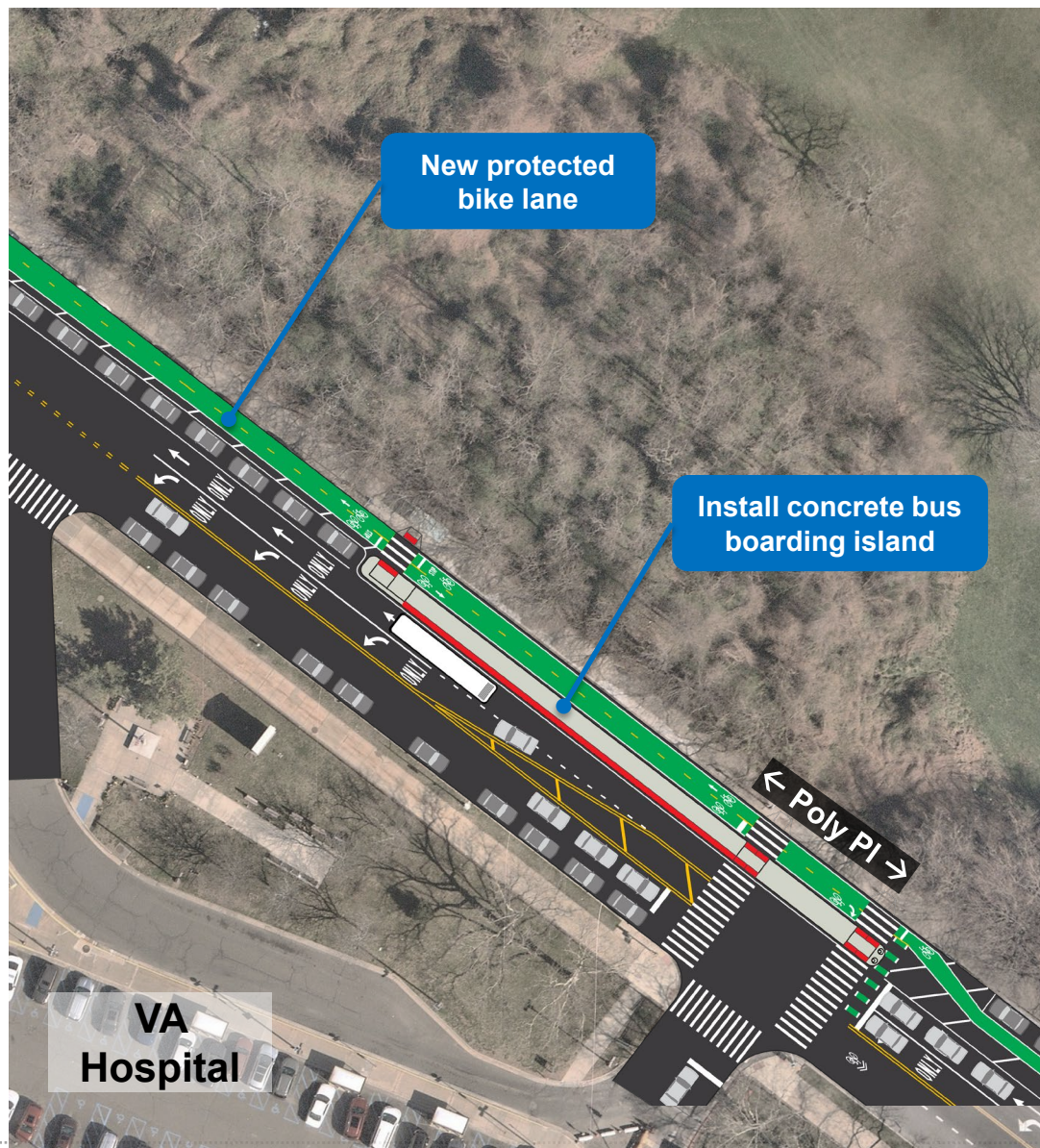
Proposal Details: Slip Lane Closure

Potential to add street furniture, granite blocks to discourage sidewalk parking on expanded island



7th Ave and Poly Pl

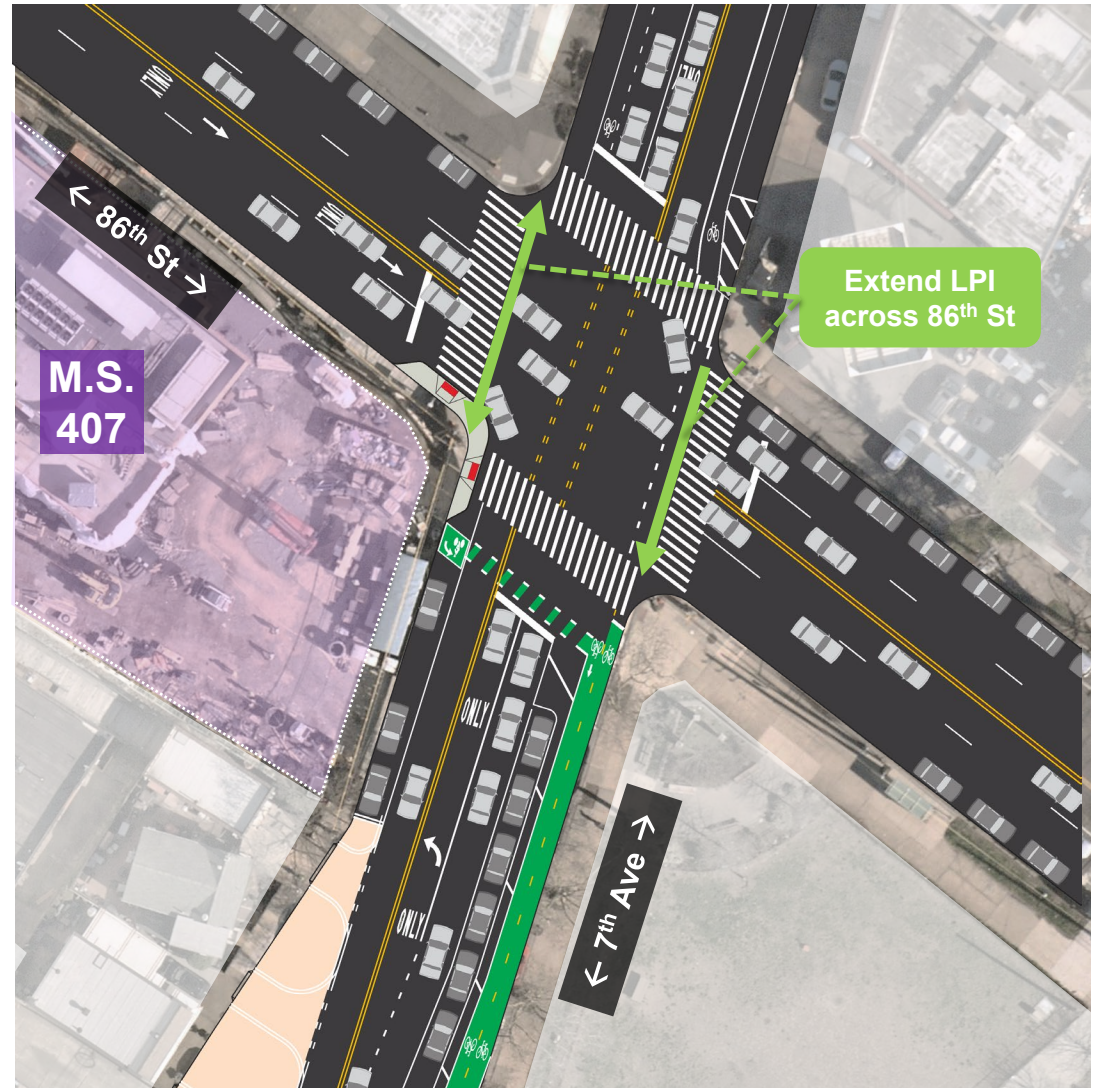
Proposal Details: Bus Boarding Island



7th Ave and 86th St

Proposal Details: 86th St. & 7th Ave.

Extended LPI across
86th St gives
pedestrians more of a
head start



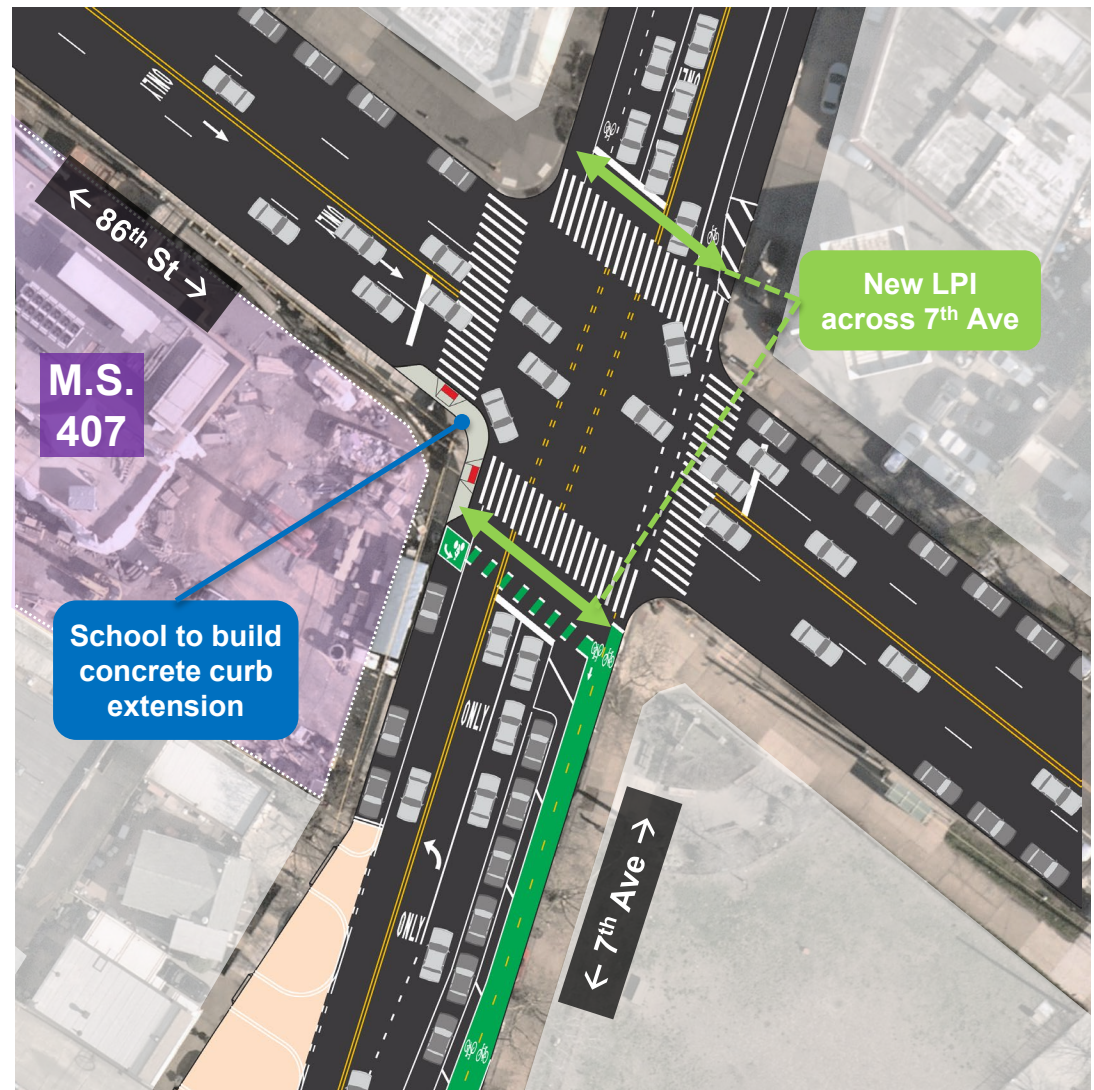
7th Ave and 86th St

Proposal Details: 86th St. & 7th Ave.

New LPI across 7th Ave gives pedestrians a head start

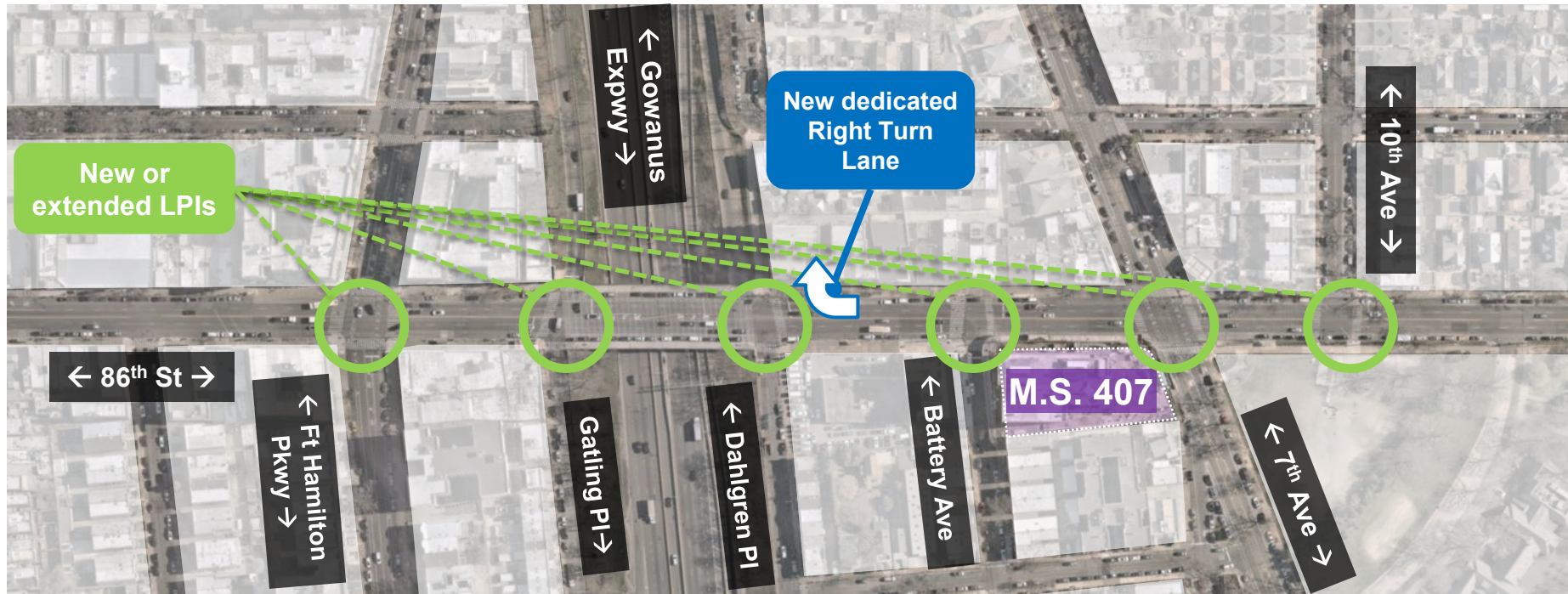
Bike Box provides safe space for cyclists to cross over 7th Ave

Concrete curb extension slows turns and reduces crossing distance



86th St, Ft Hamilton Pkwy to 10th Ave

Proposal: Signal Timing Adjustments



7th Ave, 86th St to Poly PI

Parking Impacts

**Total
Impact:
-28 spots**



7th Ave, 86th St to Poly PI

Proposal Summary

Narrow roadway to reduce speeding and reckless driving

Upgrade standard bike lanes to parking-protected to improve safety for cyclists and other road users

Change street directions to improve traffic flow near new school and accommodate safety improvements

Close slip lanes to add pedestrian space and reduce crossing distances

Install bus boarding islands to improve bus loading

Improve signal timing along 86th St and add or extend LPIs



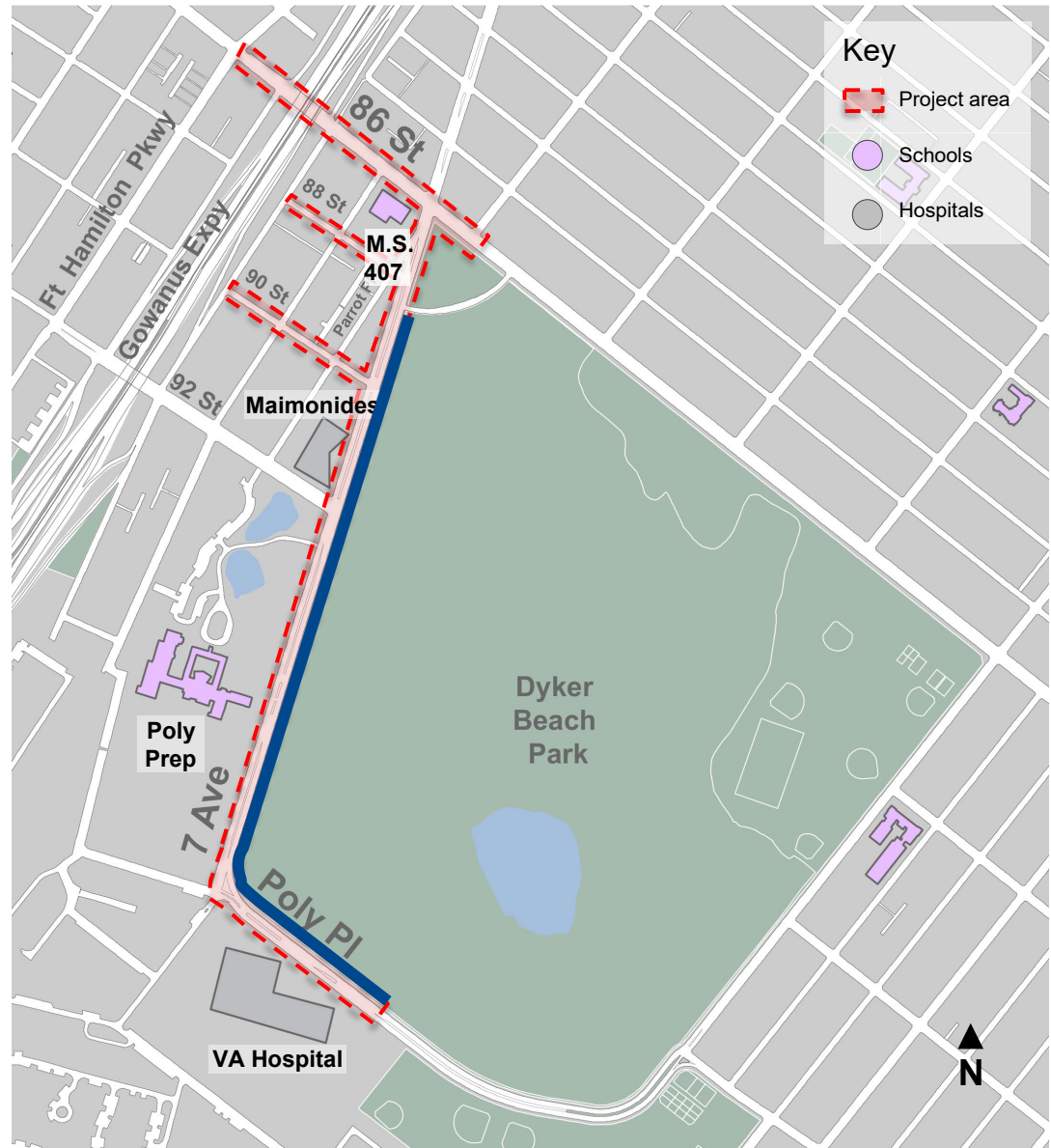
7th Ave, 86th St to Poly PI

Truck Parking

Streets with upgraded infrastructure tend to be less desirable for long-term truck parking

DOT will ask 68th Pct for additional enforcement

Alternatively, full removal of parking lane on east side would prevent truck parking and allow for barrier-protection of bike lane



Pending Study

7th Ave at 88th St

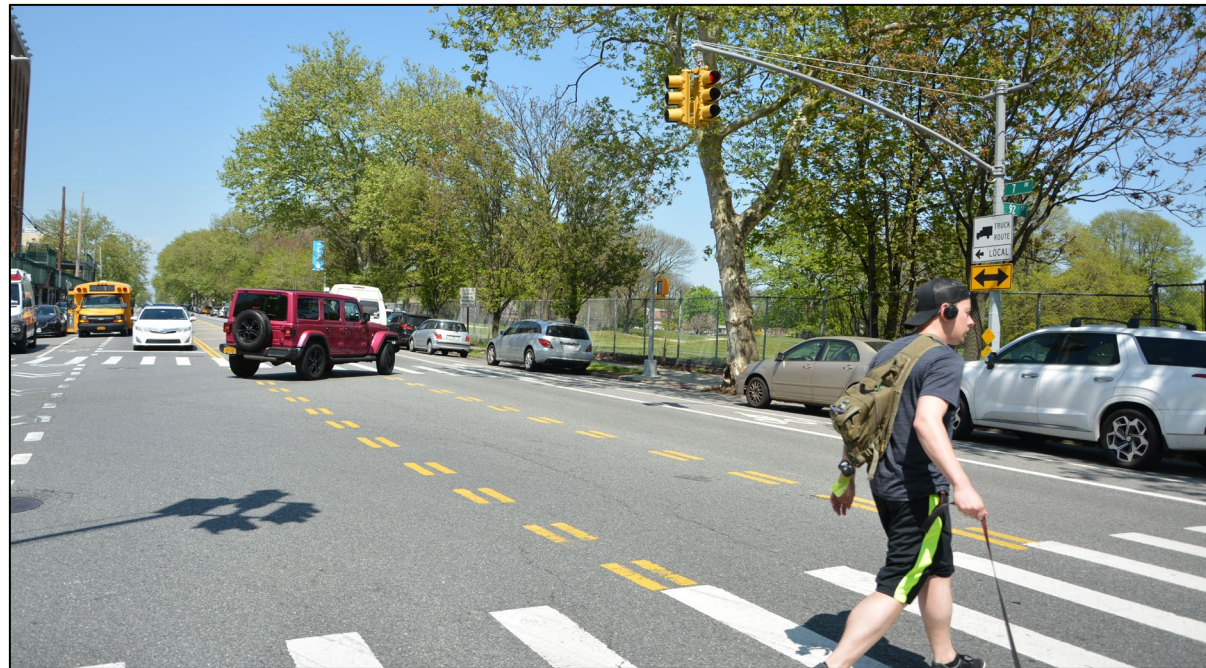
Poly PI at park entrance



New Mid-Block Crossing will give pedestrians and cyclists better access to park and ballfields, connection to Shore Pkwy Greenway, and allow extension of protected bike lanes

Thank You!

Questions?



Contact: NYCDOT BK Borough Commissioner's Office – (646) 892-1350



NYCDOT



nyc_dot



nyc_dot



NYCDOT