



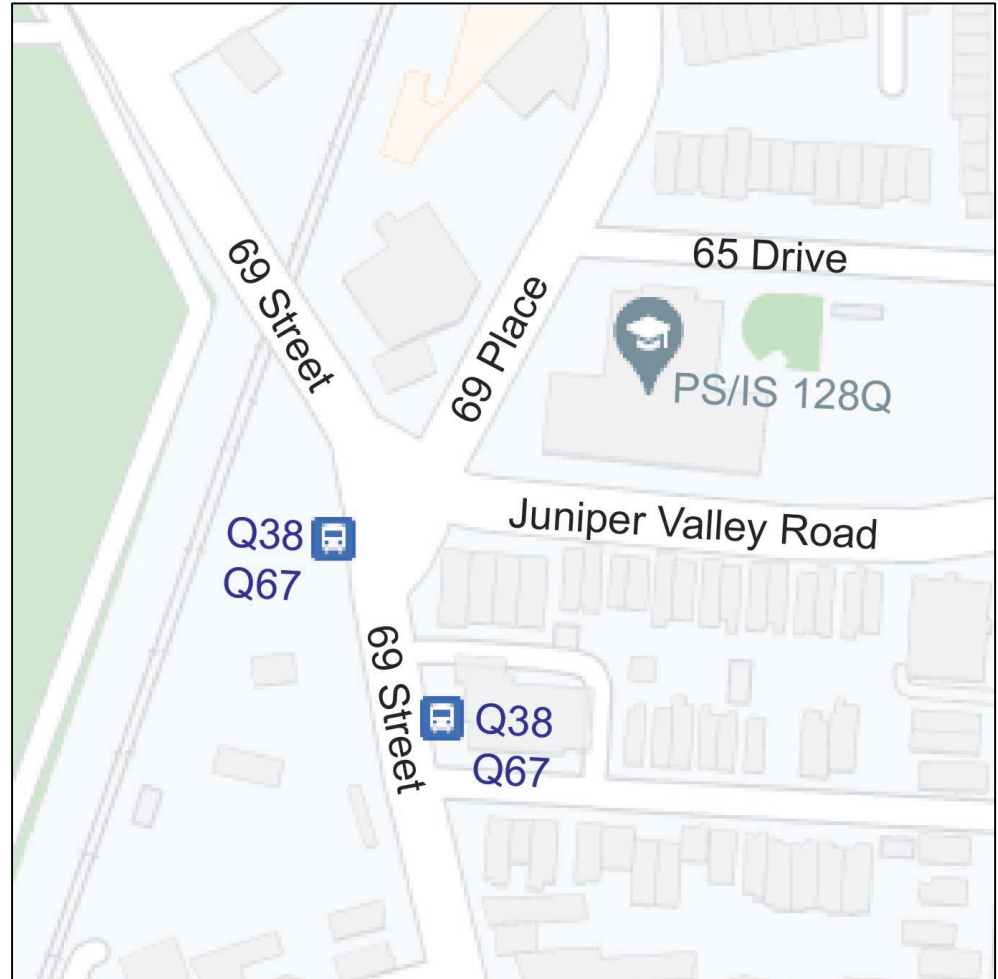
69 PLACE, 69 STREET TO 65 DRIVE

Street Improvement Project

October 2021

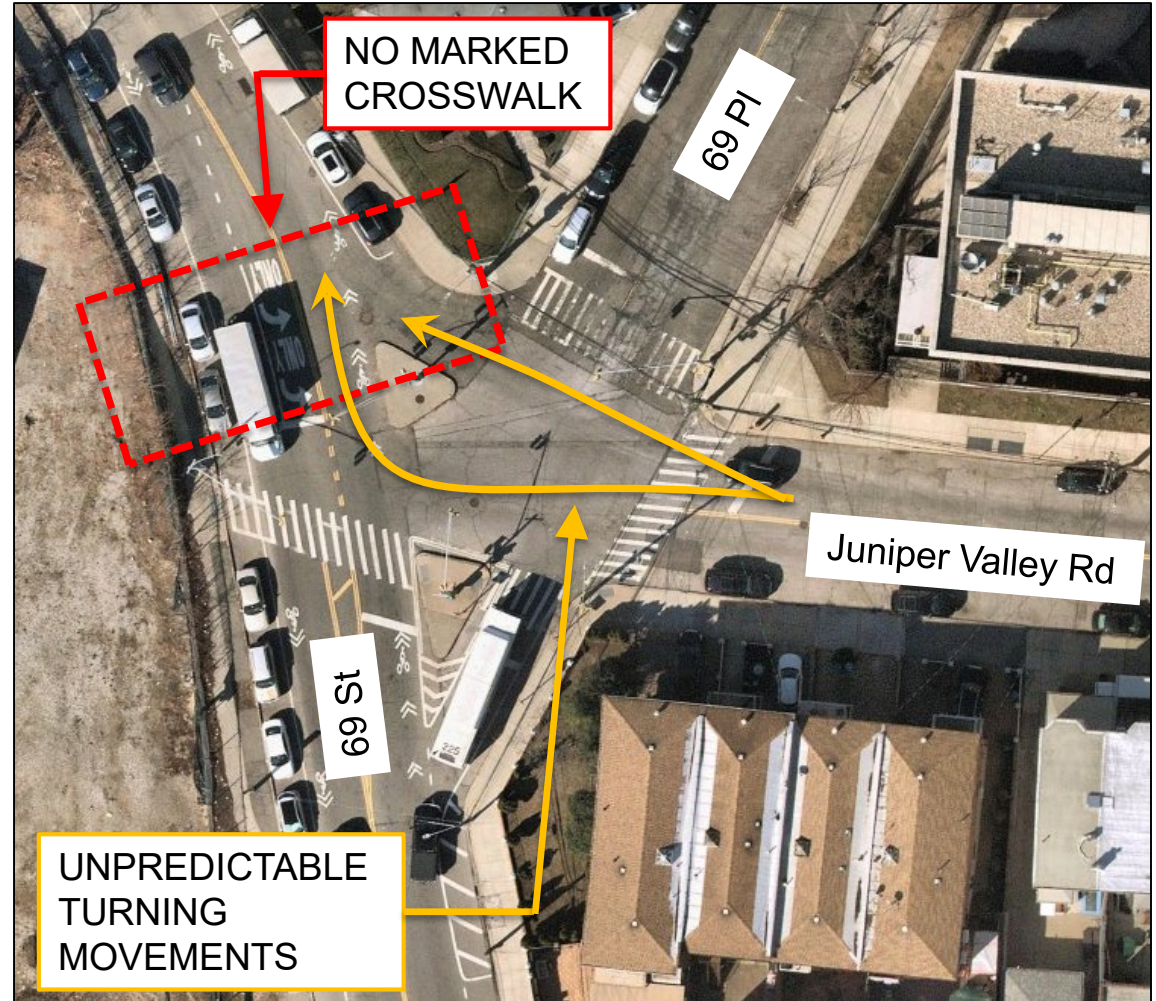
Project Background

- Request from Assembly Member Barnwell to provide safety improvements at Juniper Valley Road at 69 Place
- Request from Council Member Holden to provide safety improvements at 69 Place and 65 Drive
- Community Board 5 request for safety improvements near PS 128
- DOT met with Principal of PS 128 to discuss safety concerns
- 69 Street is a local truck route
- Q38 and Q67 bus routes run along 69 Street and Juniper Valley Road



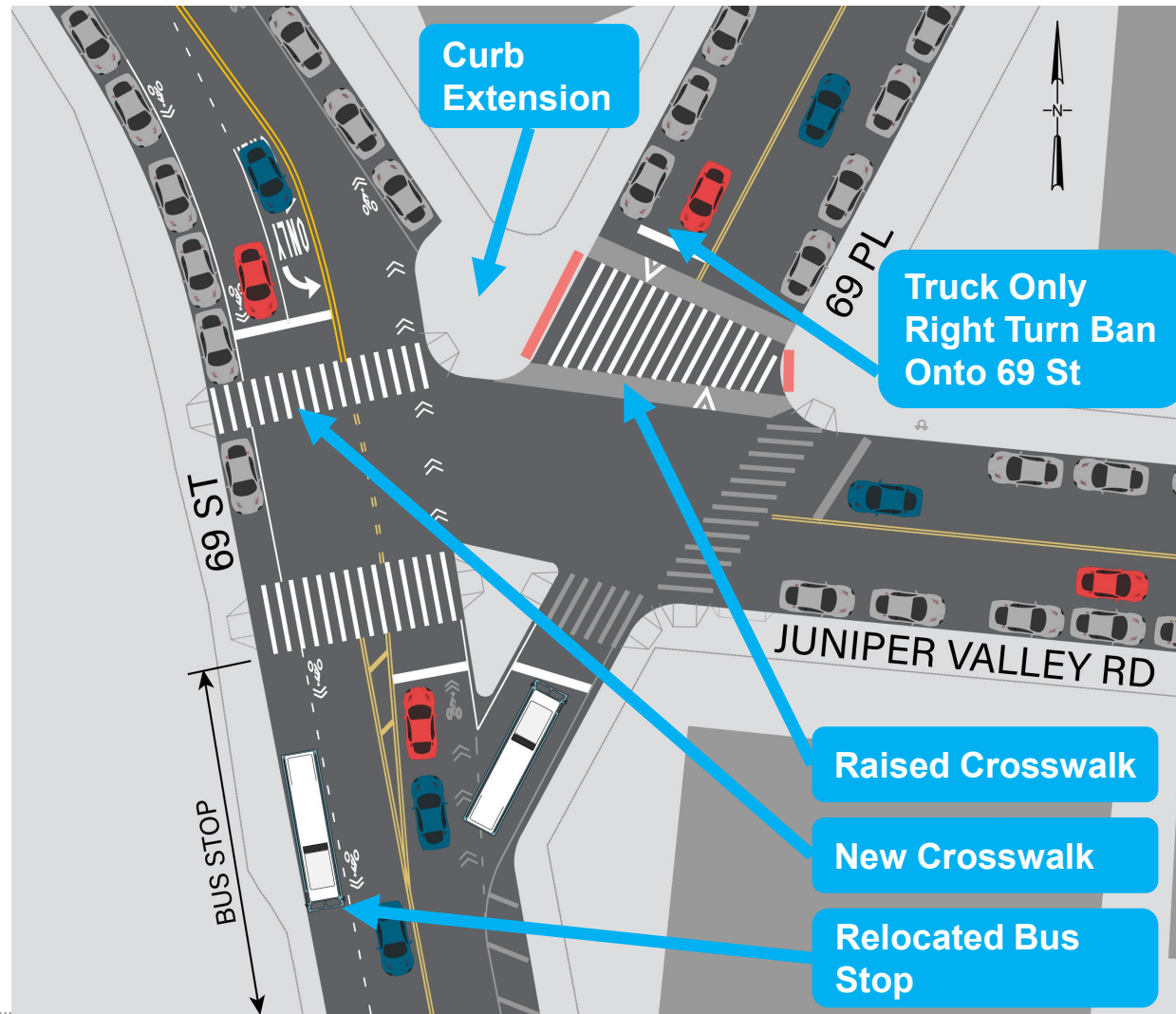
Existing Conditions – 69 St, 69 Pl & Juniper Valley Rd

- Long crossing distances and no marked crosswalk on northwest corner of the intersection
- Multi-leg intersection creates unpredictable turning movements
- Poor visibility for southbound drivers turning left onto 69 Pl from 69 St



Proposal Details – 69 St, 69 Pl & Juniper Valley Rd

- Add a Raised Crosswalk across 69 Pl at Juniper Valley Rd
- Add one new crosswalk to provide a marked crossing for pedestrians on the northwest corner of the intersection
- Build out a concrete curb extension to:
 - Normalize the intersection
 - Shorten crossing distances
- Right turn ban for trucks only onto 69 St from 69 Pl
- Enlarge the existing concrete pedestrian island on the south side of the intersection to add ADA accessible pedestrian ramps
- Relocate the existing Q38/Q67 southbound bus stop closer to the intersection



Raised Crosswalks

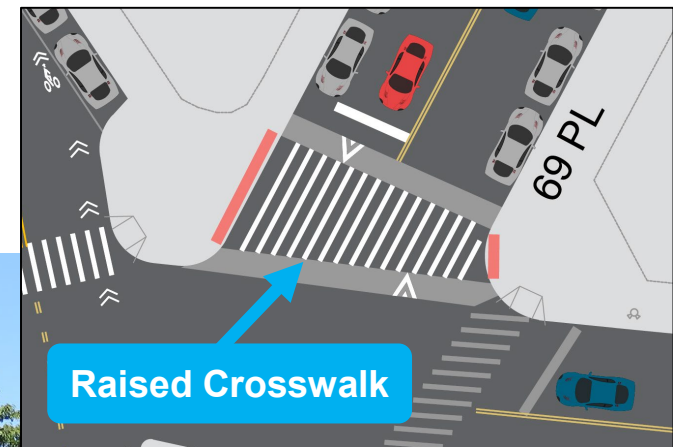
- Similar to a speed hump, but with a flat top for the pedestrian crossing

Safety Benefits

- Reduce speeds – self enforcing speed control, like speed humps
- Improve pedestrian visibility, particularly children pedestrians, by elevating the pedestrian to the height of the curb
- Encourage motorist to yield to pedestrians
- Increase accessibility – provide a level crossing for those with ambulatory disabilities and seniors

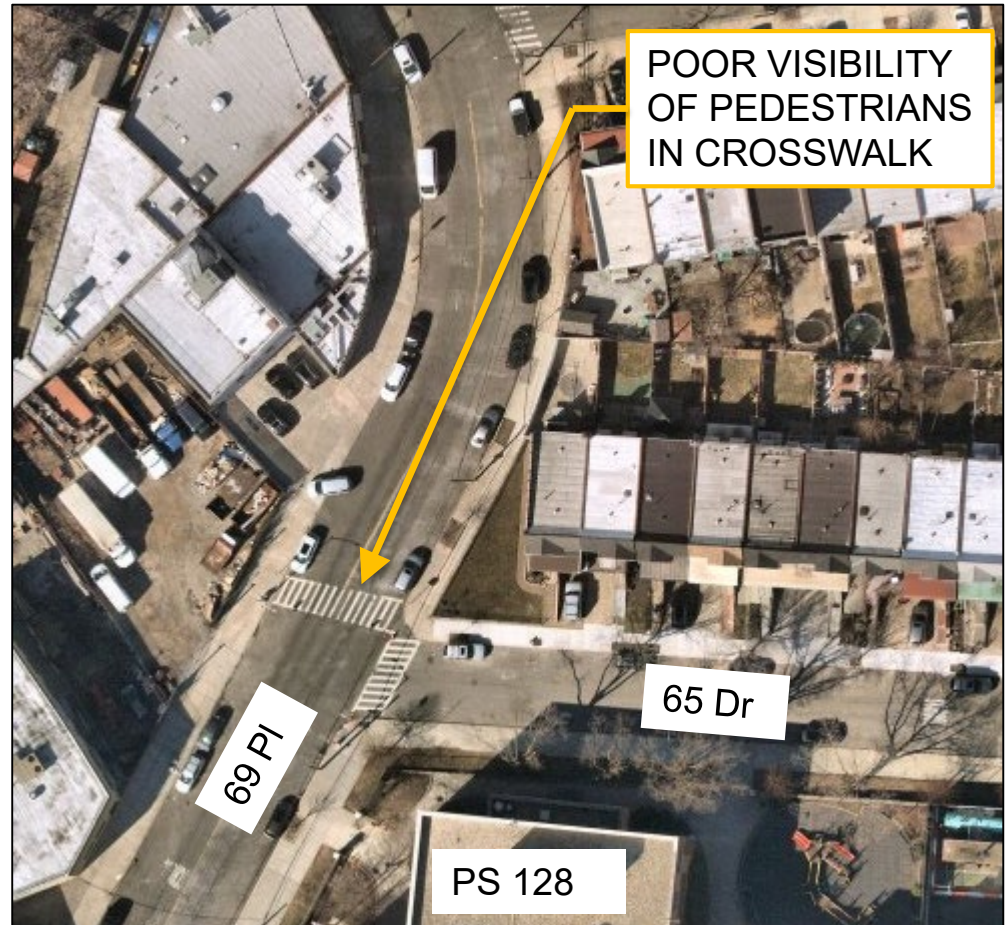
Location Selection

- Prioritize locations adjacent to child pedestrian generators (schools, parks, playgrounds) near transit, and where speeding is occurring



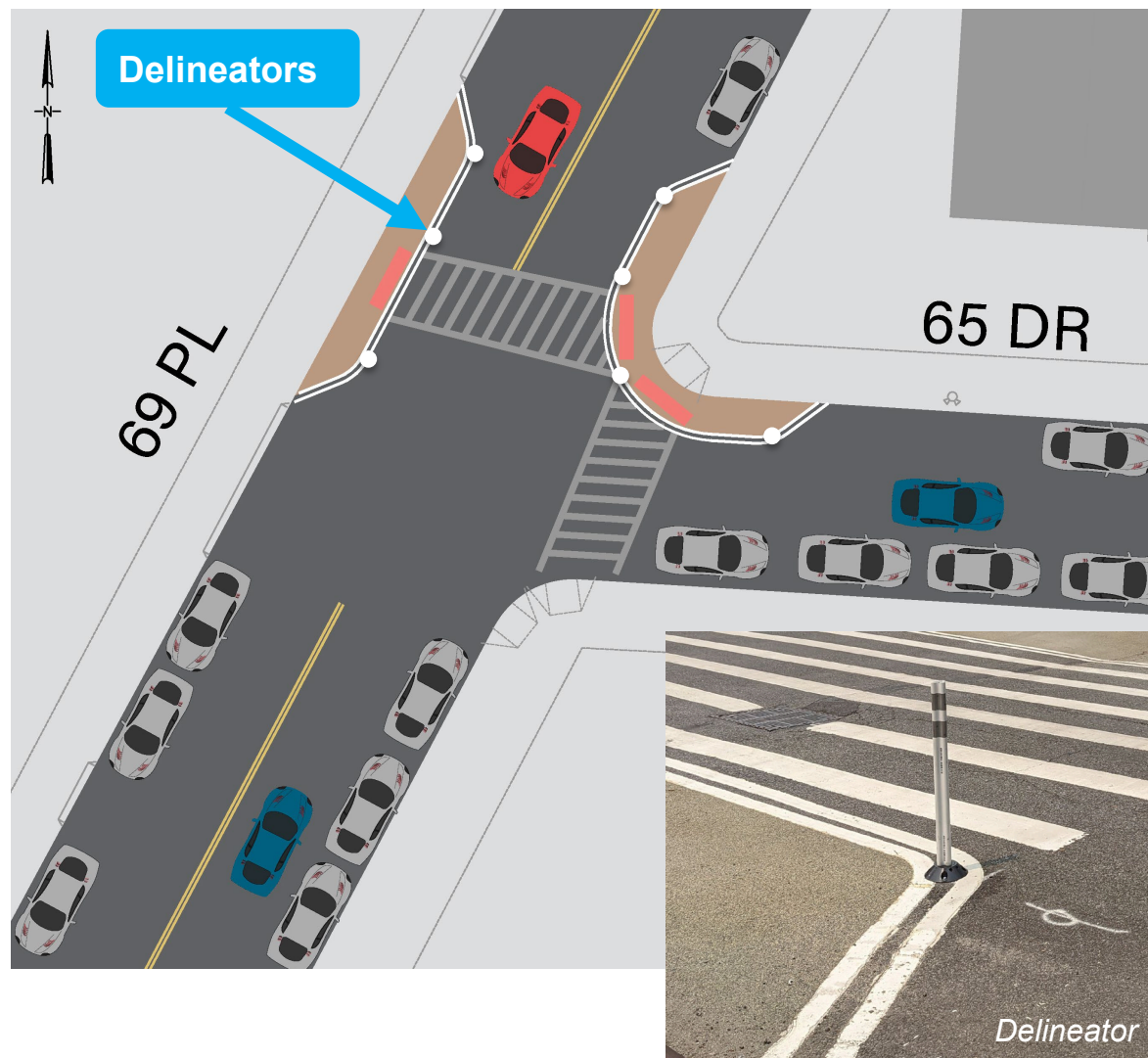
Existing Conditions – 69 Pl & 65 Dr

- Request from Council Member Holden and PS 128 to provide safety improvements at existing crosswalk across 69 Place at 65 Drive
- Poor visibility of pedestrians in crosswalk for southbound drivers coming around curve of 69 Pl



Proposal Details – 69 PL & 65 Dr

- Add two painted curb extensions to:
 - Shorten crossing distances
 - Improve pedestrian visibility
 - Slow turning vehicles
- Provide a vertical element to delineate the space for pedestrians with delineators



Project Benefits

69 St, 69 Pl & Juniper Valley Rd

- New crosswalk provides pedestrian access on the northwest corner of the intersection
- Concrete curb extension at north corner normalizes the intersection, creating safer, shorter crossings and slow turns for vehicles
- Raised Crosswalk across 69 Pl improves pedestrian visibility in the crosswalk and slows vehicle turns
- Simplifies intersection for all users and creates more predictable turning movements

69 Pl & 65 Dr

- Painted curb extensions improve pedestrian visibility and creates shorter, safer crossings



Example of Expanded Pedestrian Space and New Crosswalk at Yellowstone Blvd and Austin St, Queens

Thank You!



NYCDOT



nyc_dot



nyc_dot



NYCDOT