



# 5<sup>TH</sup> ST, 46<sup>TH</sup> AVE TO BORDEN AVE

Presentation to CB2

October 2, 2017



---

# Background

# 1

# BACKGROUND

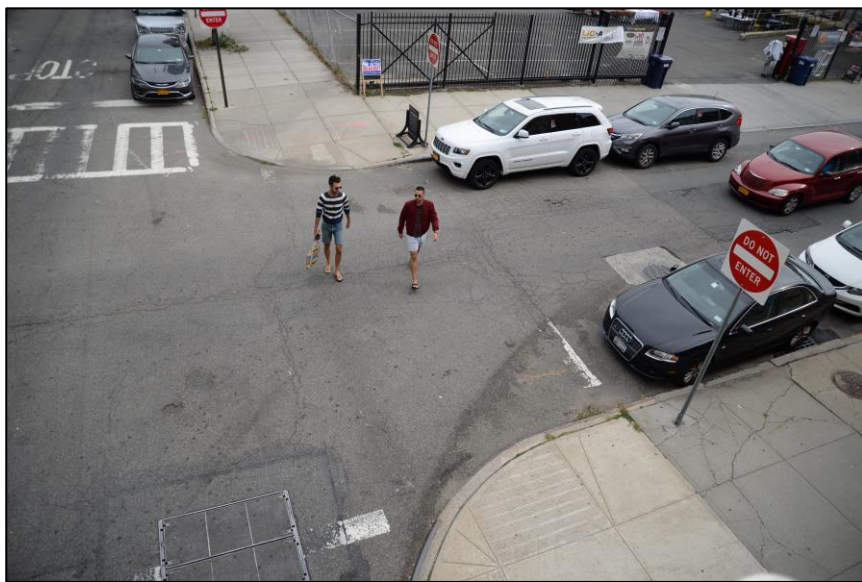
- Residential development, waterfront parks, and East River Ferry have increased the numbers of pedestrians in the area
- 5<sup>th</sup> St north of 50<sup>th</sup> Ave was converted one-way southbound with speed humps in 2014
- Councilmember Van Bramer requested crosswalks on 5<sup>th</sup> St at 50<sup>th</sup> Ave, 51<sup>st</sup> Ave, and 46<sup>th</sup> Ave
- All-way stop and crosswalks were installed at 51<sup>st</sup> Ave and 5<sup>th</sup> St in Spring 2017



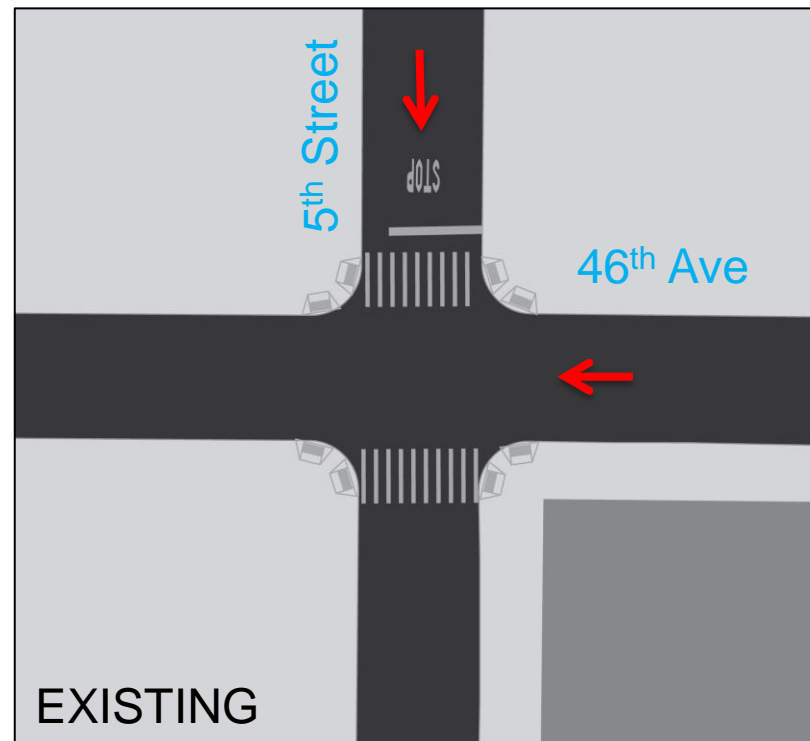
# EXISTING CONDITIONS

## 5<sup>th</sup> St and 46<sup>th</sup> Ave

- No marked crosswalks across 46<sup>th</sup> Ave at 5<sup>th</sup> Ave
- Adjacent to LIC flea market which is a large pedestrian generator



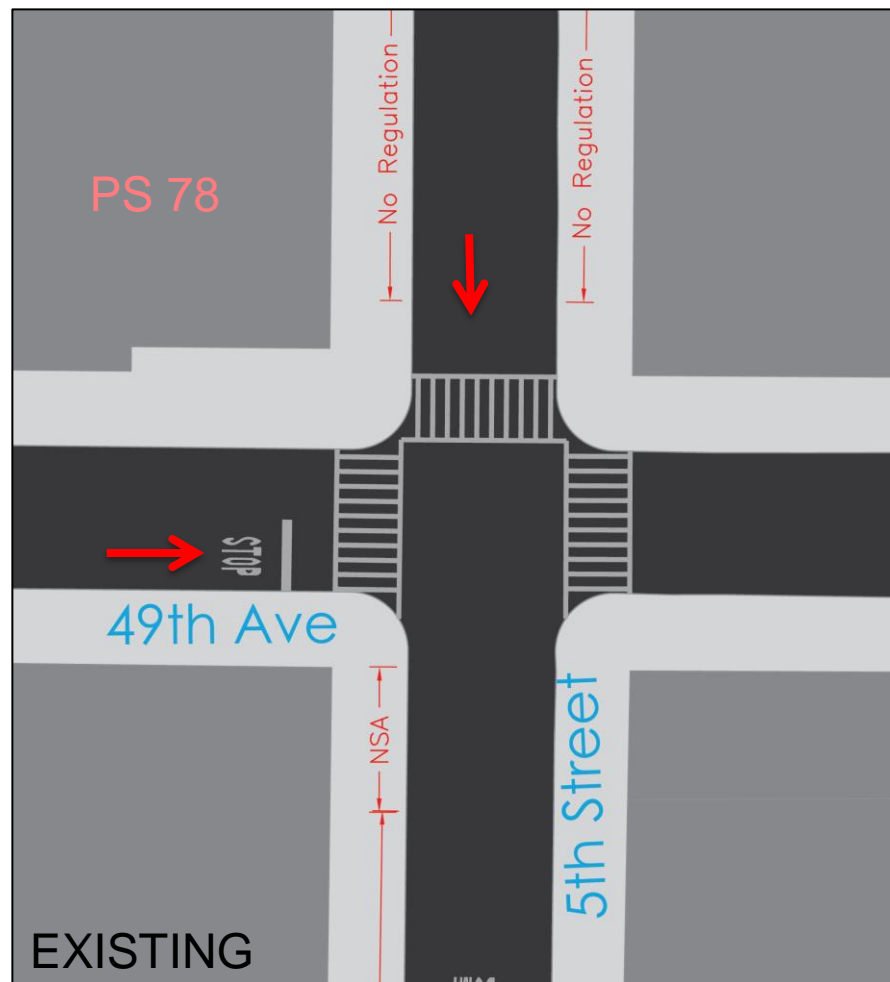
Existing: 5th St at 46th Ave



# EXISTING CONDITIONS

## 5<sup>th</sup> St and 49<sup>th</sup> Ave

- Existing uncontrolled school crosswalk on north, east, and west sides of the intersection
- Adjacent to PS 78



# EXISTING CONDITIONS

## 5<sup>th</sup> St, 50<sup>th</sup> Ave to Borden Ave

- Southbound conversion of 5<sup>th</sup> St ends at 50<sup>th</sup> Ave and the two-way section south is very narrow with parking on both sides



Existing: 5<sup>th</sup> St facing north to 51 St



Existing: 5<sup>th</sup> St facing north to 51 St



# EXISTING CONDITIONS

## 5<sup>th</sup> St, 51<sup>st</sup> Ave to Borden Ave

### 5<sup>th</sup> St and 50<sup>th</sup> Ave

- Pedestrian volumes crossing 5<sup>th</sup> St at 50<sup>th</sup> Ave are high with no marked crosswalk



### 5<sup>th</sup> St and Borden Ave

- Large channelized area at 5<sup>th</sup> St and Borden Ave with no marked crosswalk at existing stop control



---

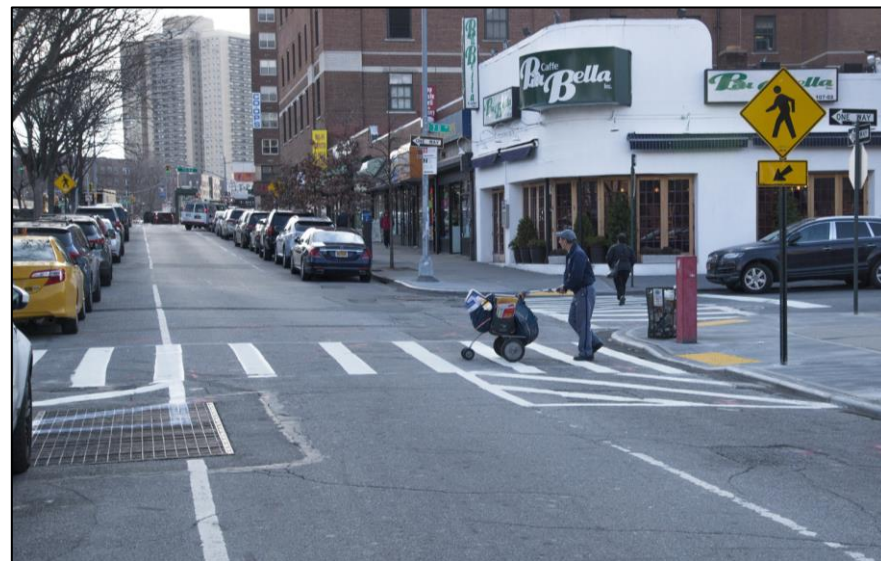
Proposal

2



# ENHANCED CROSSINGS

- At locations that do not meet federal criteria for traffic controls
- Calm streets with long distances between marked crossings
- Improve accessibility by marking the preferred pedestrian path
- Delineates pedestrian paths and increases visibility of crossing pedestrians to approaching vehicles
- Treatment includes 15' of daylighting, ADA compliant pedestrian ramps, pedestrian warning signs, and high-visibility crosswalks



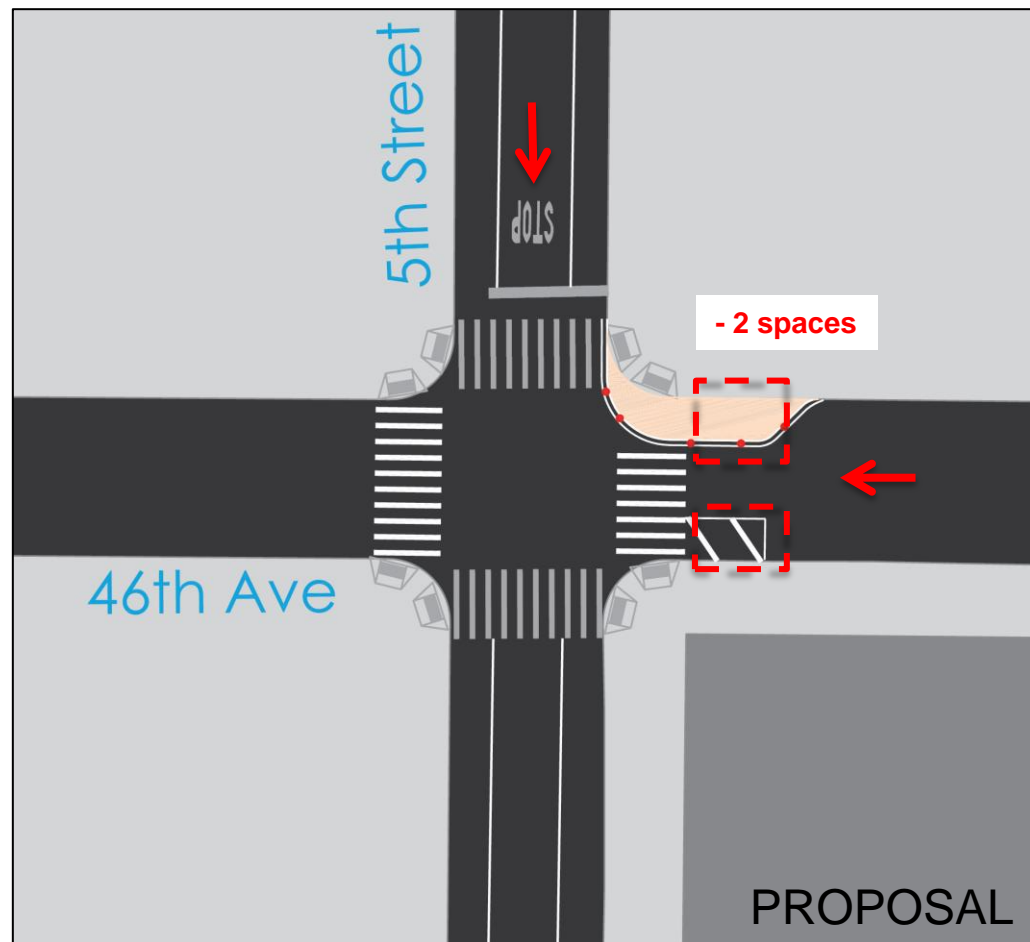
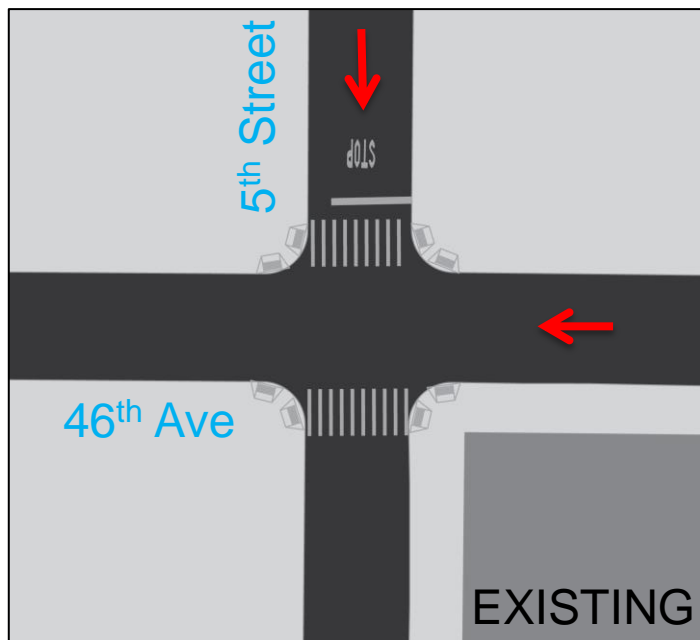
*Enhanced Crossing,  
Queens Blvd Service Rd, McDonald Park*



# PROPOSAL

## 5<sup>th</sup> St at 46<sup>th</sup> Ave

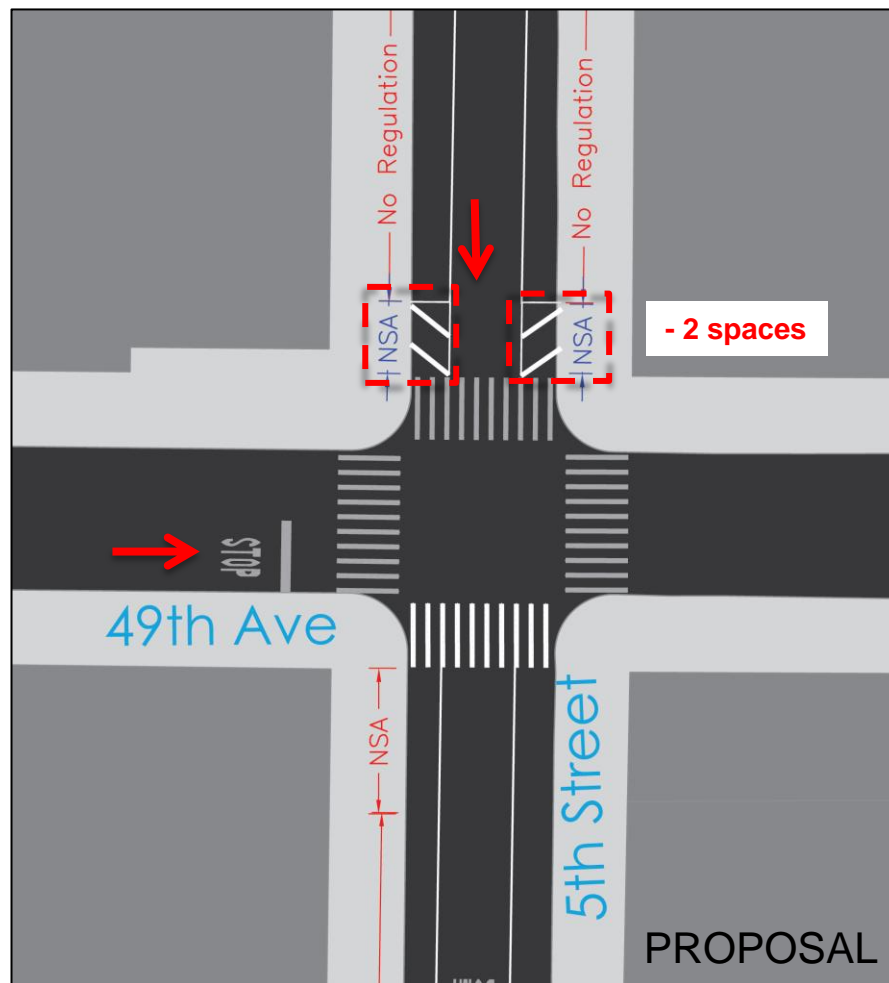
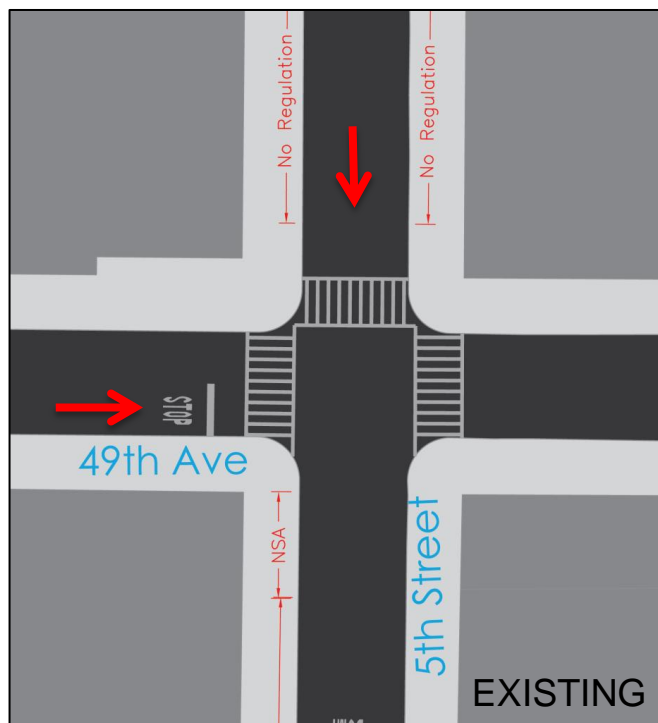
- Install Enhanced Crossing and neckdown



# PROPOSAL

## 5<sup>th</sup> St at 49<sup>th</sup> Ave

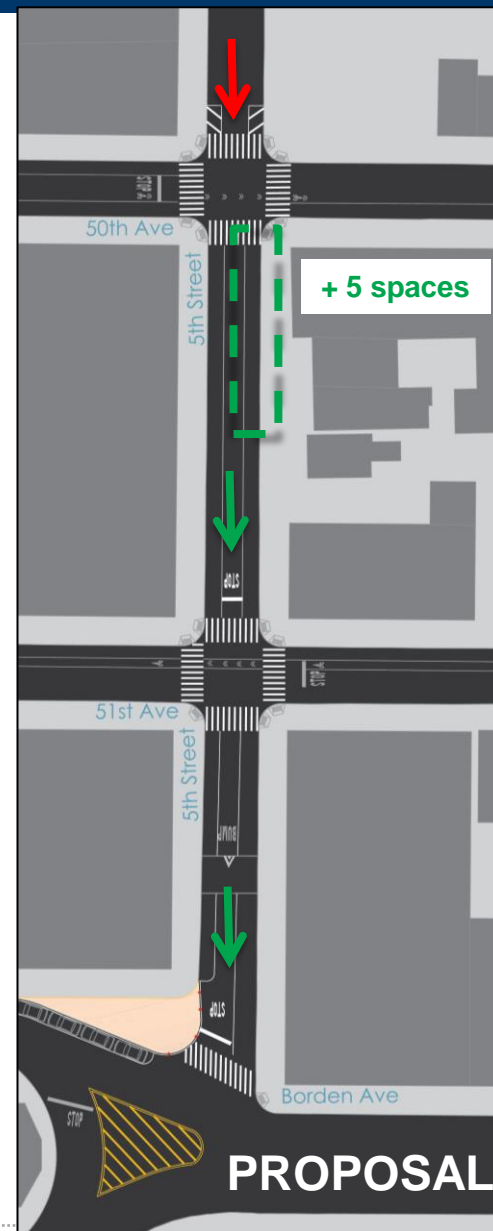
- Convert school crosswalk to Enhanced Crossing and mark south crosswalk



# PROPOSAL

## 5<sup>th</sup> St Borden Ave to 50<sup>th</sup> Ave

- Convert 5<sup>th</sup> St from 50<sup>th</sup> Ave to Borden Ave to One-way southbound
- Add 5 parking spaces on the NE curb of 5<sup>th</sup> between 50<sup>th</sup> Ave and 51<sup>st</sup> Ave where the turn only lane is currently
- Install Enhanced Crossing at 50<sup>th</sup> Ave and 5<sup>th</sup> St
- Install painted curb extension on Borden Ave at 5<sup>th</sup> St and mark the crosswalk
- Mark wide parking lane stripes



# BENEFITS

- New safer and shorter pedestrian crossings
- Add 1 parking space
- Increased pedestrian space
- Remove vehicular head-on condition at 5<sup>th</sup> St and 50<sup>th</sup> Ave



**Existing Conditions: 5<sup>th</sup> St and 50<sup>th</sup> Ave**

# THANK YOU!

## Questions?



NYC DOT



NYC DOT

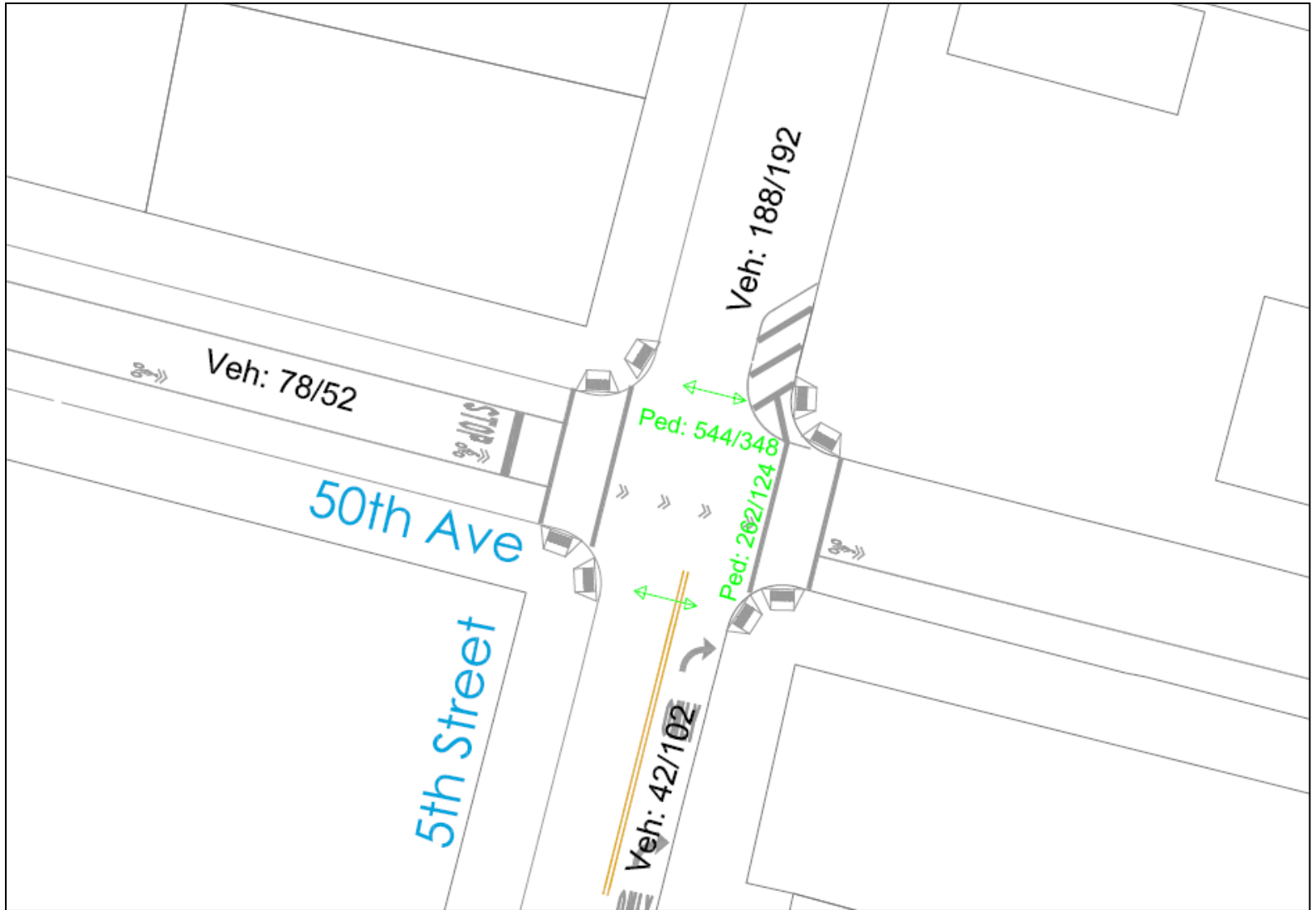


nyc\_dot



NYC DOT

# VOLUMES



Data collected: December 8<sup>th</sup>, 2015 8-8:30am & 4:30-5pm