



# 43<sup>RD</sup> STREET SHARED STREET

Community Board 6

May 7<sup>th</sup>, 2018



---

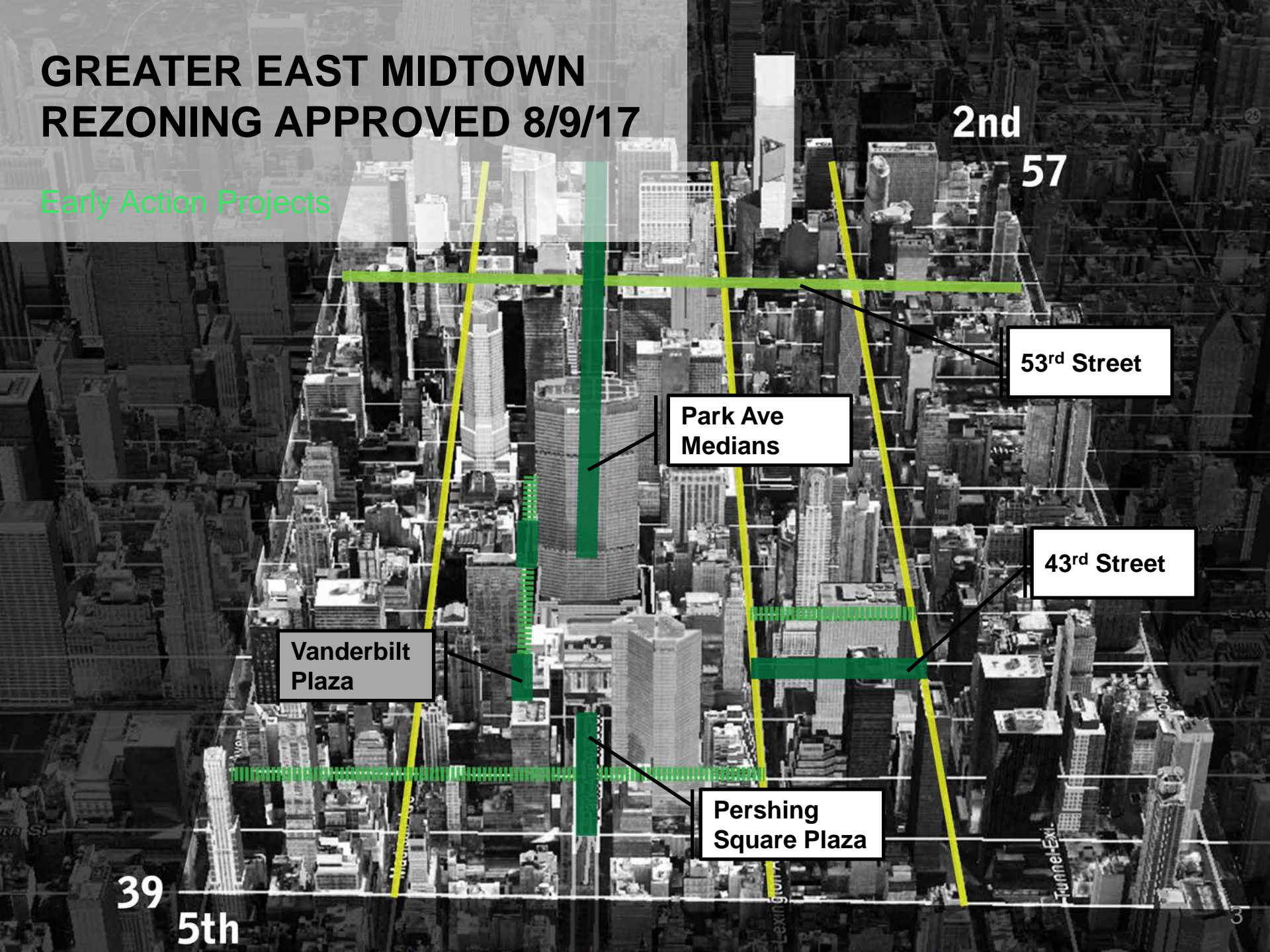
# Background: Greater East Midtown Rezoning





# GREATER EAST MIDTOWN REZONING APPROVED 8/9/17

Early Action Projects



2nd  
57

53<sup>rd</sup> Street

Park Ave  
Medians

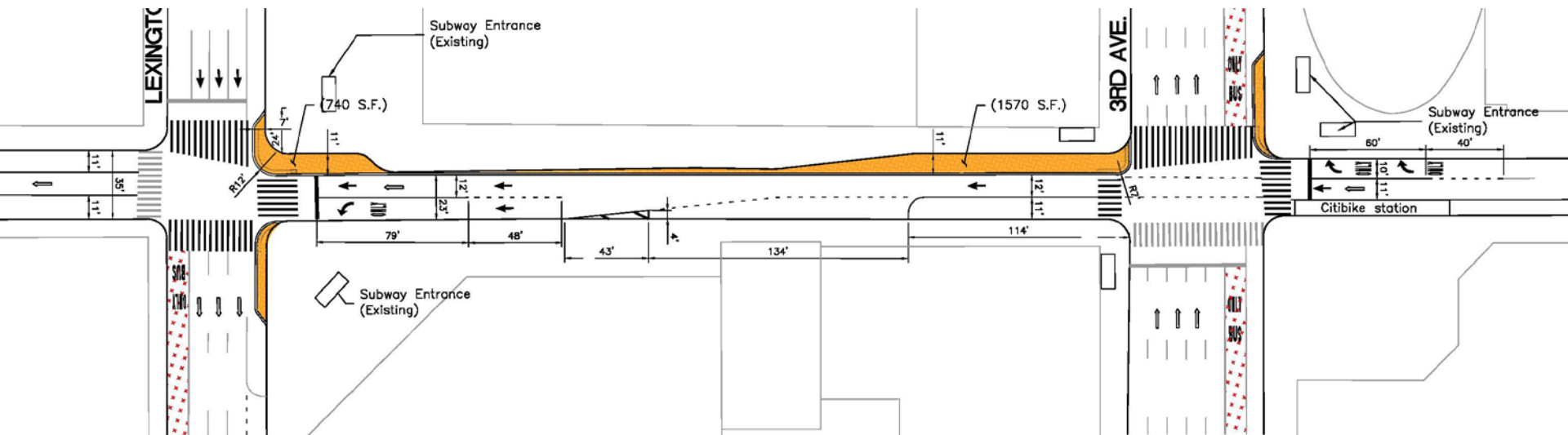
43<sup>rd</sup> Street

Vanderbilt  
Plaza

Pershing  
Square Plaza

39  
5th

# 53<sup>rd</sup> Street



**53<sup>rd</sup> Street Thoroughfare Improvements, Third Ave to 7<sup>th</sup> Ave  
Potential Implementation – Summer 2018**

# 43<sup>rd</sup> Street Event



September 29, 2017

---

What is a Shared Street?

2



# Shared Street

A “**Shared Street**” is a roadway designed for slow travel speeds where pedestrians, cyclists, and motorists all share the right of way.

Vehicles are advised to drive 5MPH and the roadway is flush from building line to building line without the typical curb line grade separation.

Shared streets can be designed and managed in a variety of different ways to balance the needs of all users while enhancing the safety, aesthetics, and overall experience of the street.



Buenos Aires, Argentina

# 43<sup>rd</sup> Street Design Considerations

## Shared Street design considerations include:

- Overall circulation
- Transit connections
- Building and loading dock access
- Pick-up and drop-offs
- Parking
- Sanitation
- Deliveries
- ADA accessibility
- Emergency access





# Interim Materials



Broadway between 24<sup>th</sup> & 25<sup>th</sup> Street





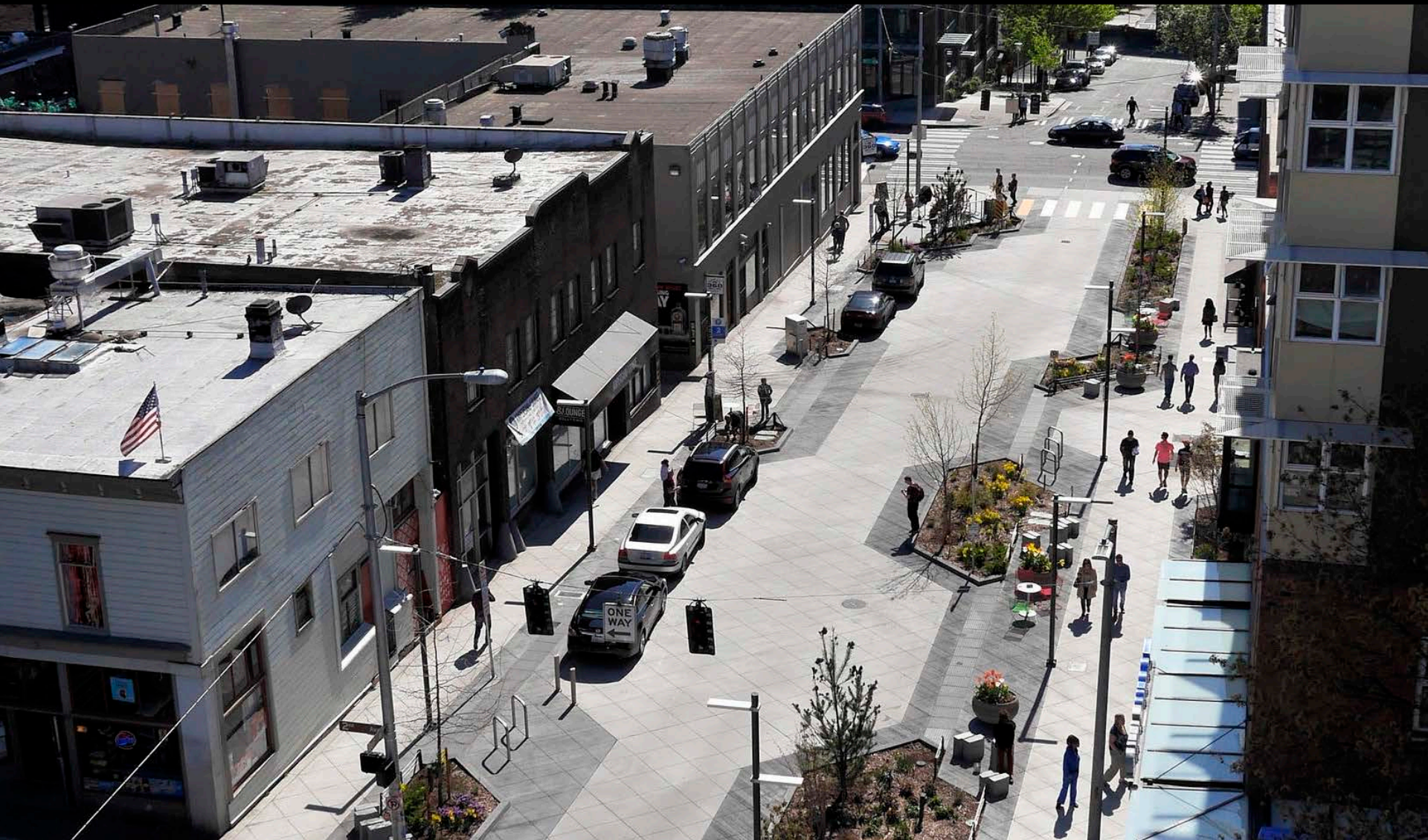
# Interim Materials



Broadway between 24<sup>th</sup> & 25<sup>th</sup> Street



# Permanent Materials



**Bell St. Seattle**



# Accessible Shared Streets

## 8.3 Shared Zone

» Designate a shared zone where users can expect to encounter each other, using treatments that communicate pedestrian priority.

- 1 Signs indicating pedestrian priority
- 2 Speed management measures (raised crossing)



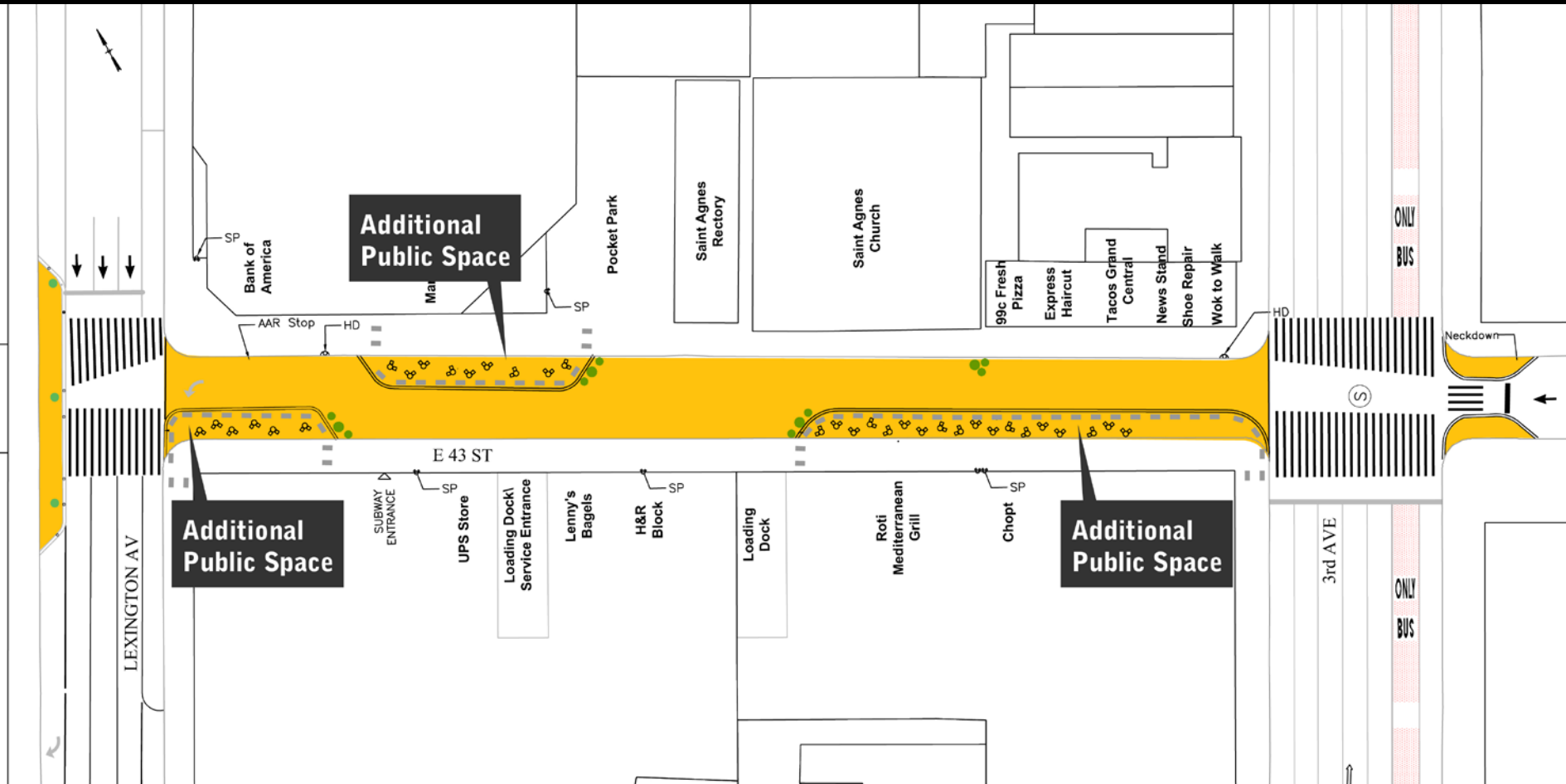
Figure 25

---

## Design Proposal

# 3

# 43<sup>rd</sup> Street – Proposed Design





# 43<sup>rd</sup> Street Outreach

## Stakeholders

- Grand Central Partnership
- Property Owners
- Merchants
- Public

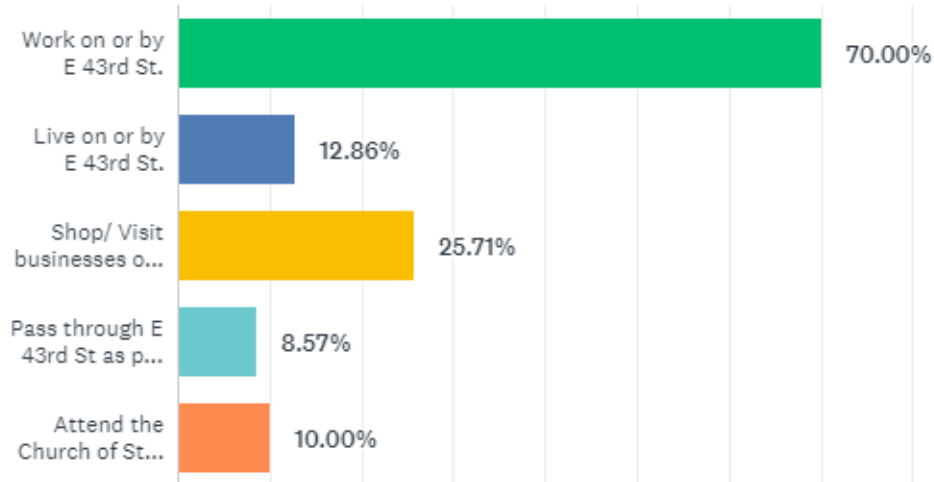
## Information Collected

- Construction Plans
- Loading/Delivery Access
- Garbage Collection
- Feedback Portal
- User Surveys

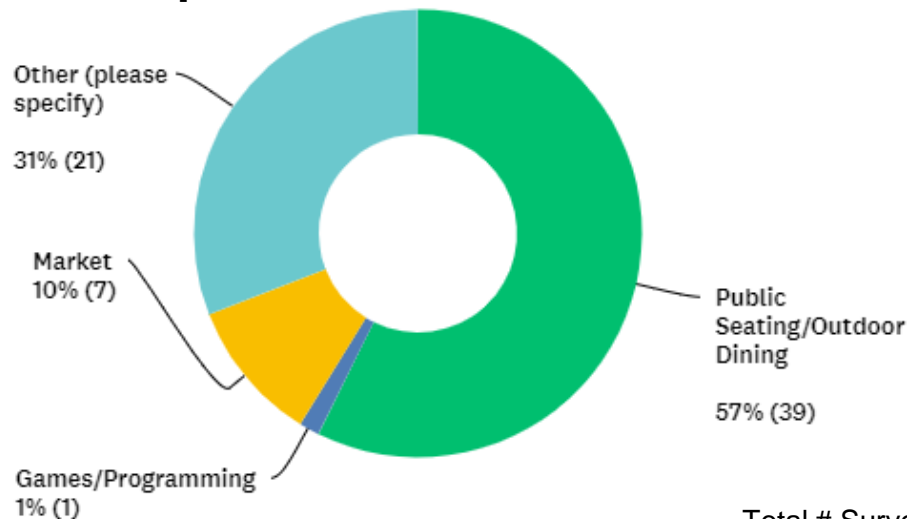


# 43<sup>rd</sup> Street User Surveys

## What is your relationship to E 43rd St?



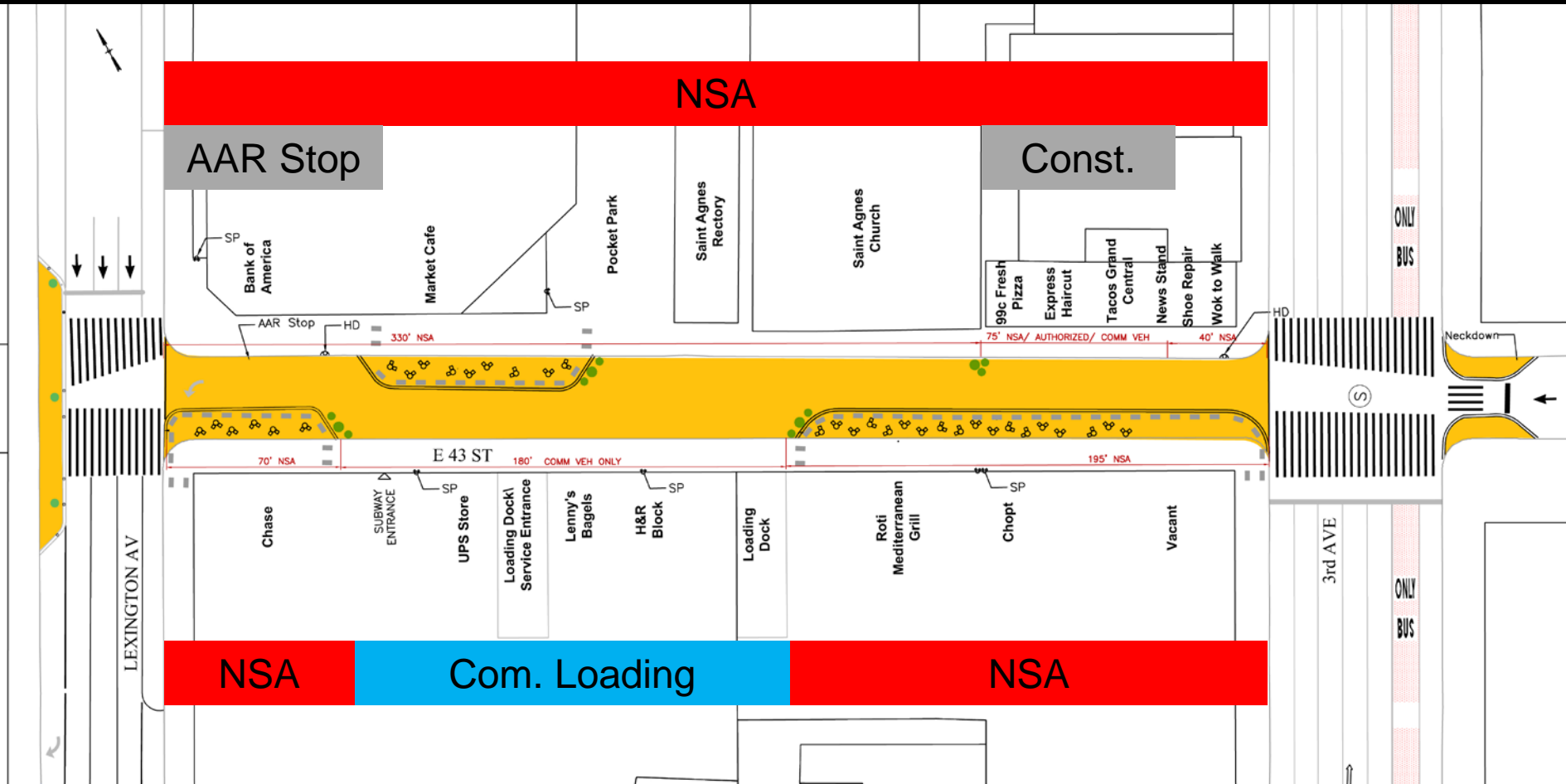
## How would you like to see Additional Public Space used?



Total # Surveys- 70

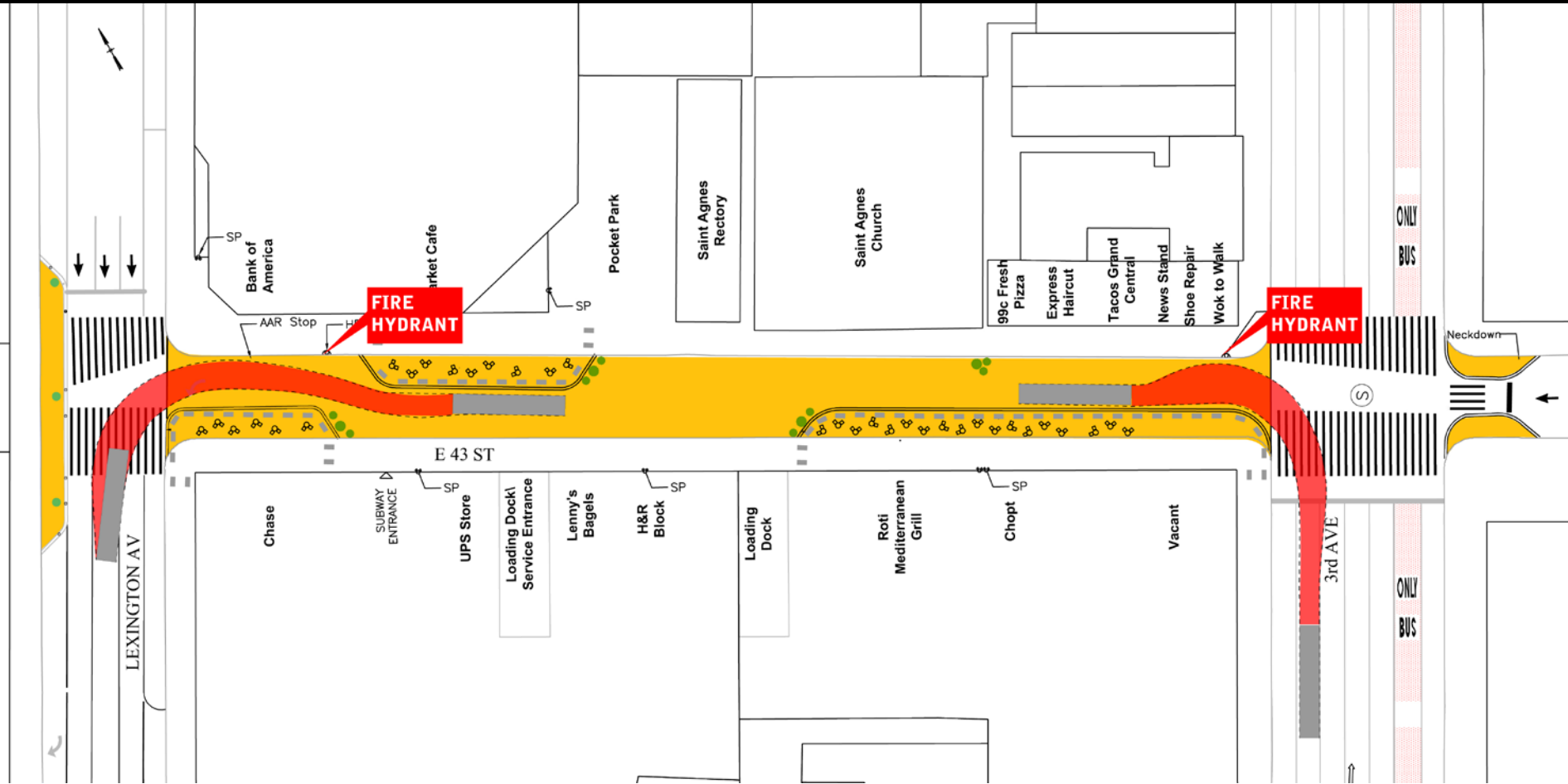


# 43<sup>rd</sup> Street Curb Management





# 43<sup>rd</sup> Street Access



---

## Timeline & Next Steps

# 4



# 43<sup>rd</sup> Street Timeline

- 
- **Sep. 8<sup>th</sup> 2017** Greater East Midtown Rezoning Approved
  - **Nov. 6<sup>th</sup> 2017** CB6 Transportation Committee Presentation
  - **2017 / 2018** Ongoing Stakeholder Outreach
  - **Feb. 15<sup>th</sup> 2018** Governing Group Vote on Funding Projects
  - **May 7<sup>th</sup> 2018** CB6 Transportation Committee Presentation
  - **Spring 2018** CB6 Full Board
  - **Summer 2018** DOT installs Shared Street in interim material (Pending CB6 vote)
  - **2018 / 2019** DOT monitors the Shared Street, gathers feedback, and begins permanent design process

# THANK YOU!

---

## Questions?



NYC DOT



NYC DOT



nyc\_dot



NYC DOT