



COMMUNITY BOARD #6

**43RD STREET SHARED STREET
FROM LEXINGTON AVENUE TO 3RD AVENUE AND
LEXINGTON AVENUE FROM 43RD STREET TO 44TH STREET**

**PROJECT ID: HWMME43ST
BOROUGH OF MANHATTAN**

CONTENTS

PROJECT LOCATION

PROJECT FUNDING

PROJECT BACKGROUND

PROJECT ACTIVITY TO DATE

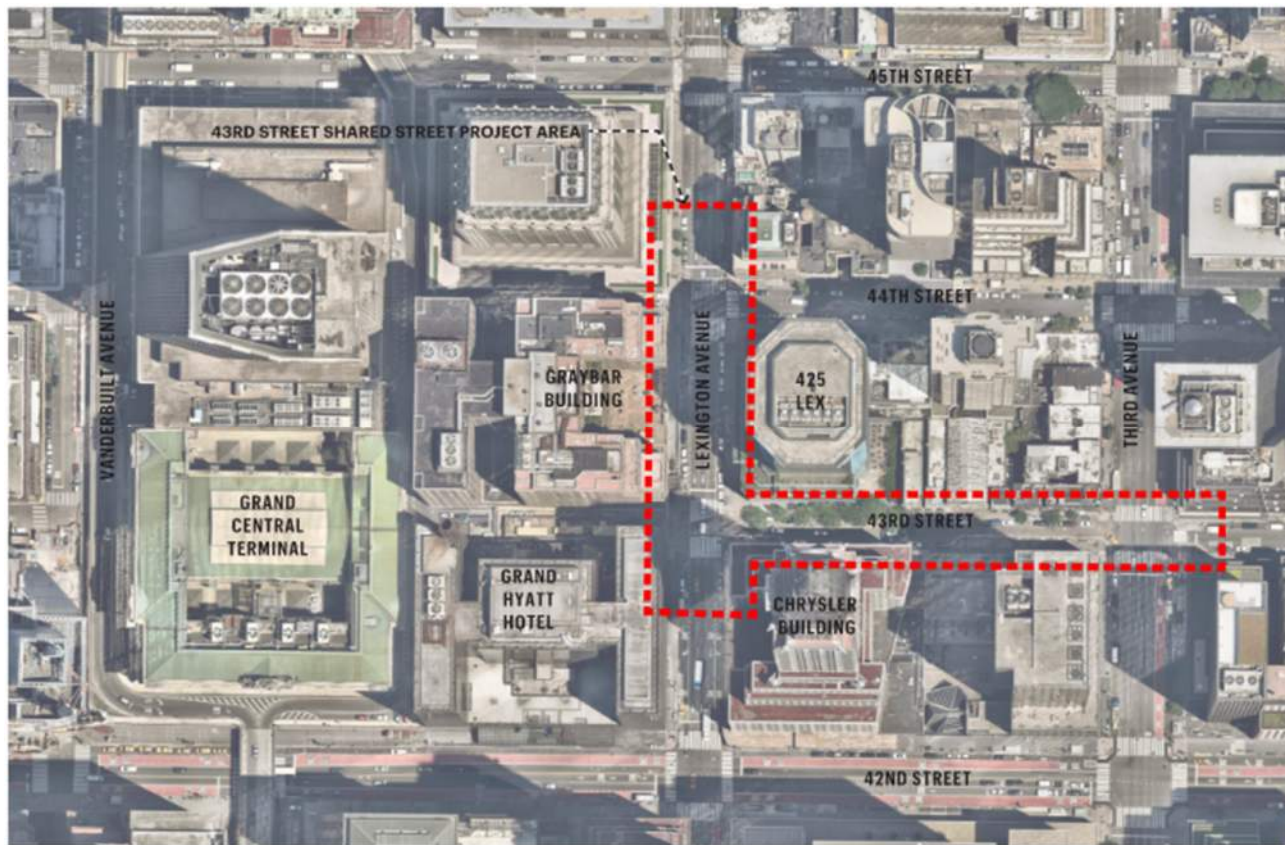
PROJECT SCHEDULE

EXISTING CONDITIONS

PROPOSED IMPROVEMENTS

COMMUNITY IMPACTS DURING CONSTRUCTION

PROJECT LOCATION



Project Limits:

Lexington Ave between East 43rd St and East 44th St

East 43rd Street between Lexington Ave and 3rd Ave

Intersection of East 43rd Street and 3rd Ave

Intersection of East 44th Street and Lexington Ave

PROJECT FUNDING

HWMME43ST is a City funded Design-Bid-Build project
including NYCDEP EP-7 utility work funding



MNLA

Thornton Tomasetti

PROJECT BACKGROUND



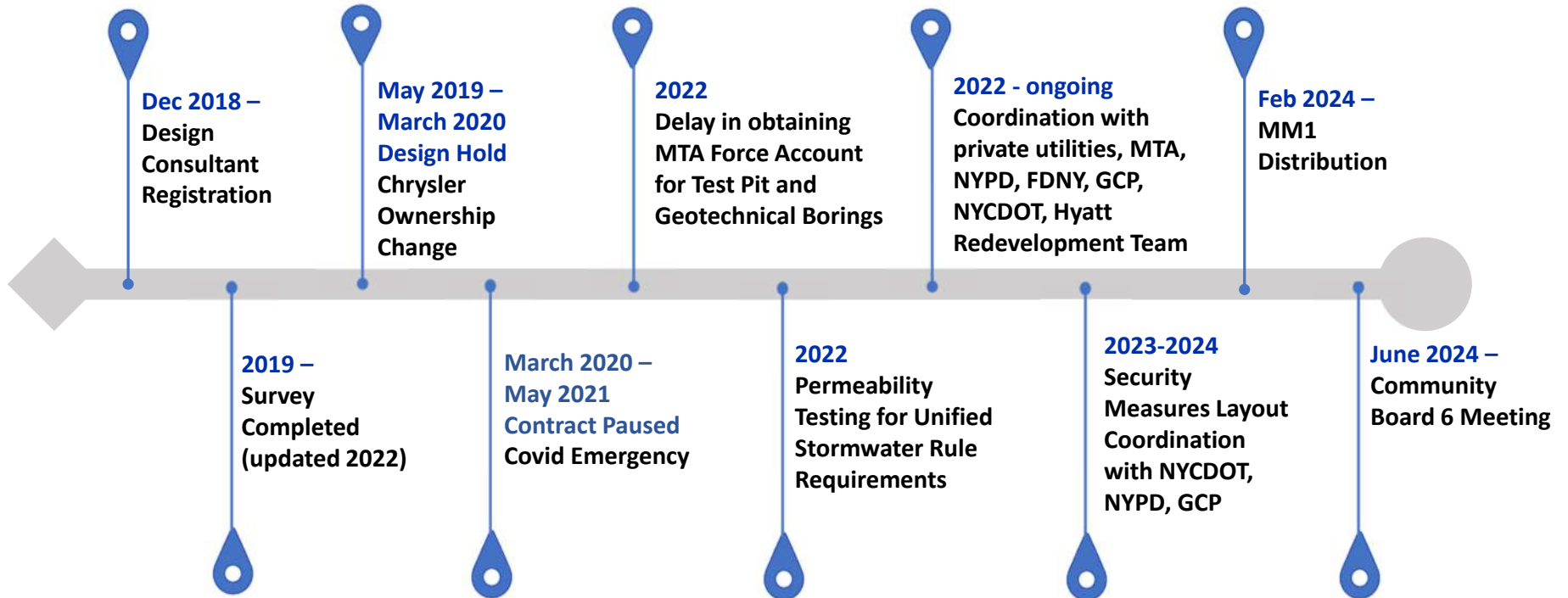
Project Background

- Project originated and was funded as part of Greater East Midtown Rezoning Agreement
- Project partner is Grand Central Partnership
- Interim condition was installed as part of a 2018 DOT in-house project

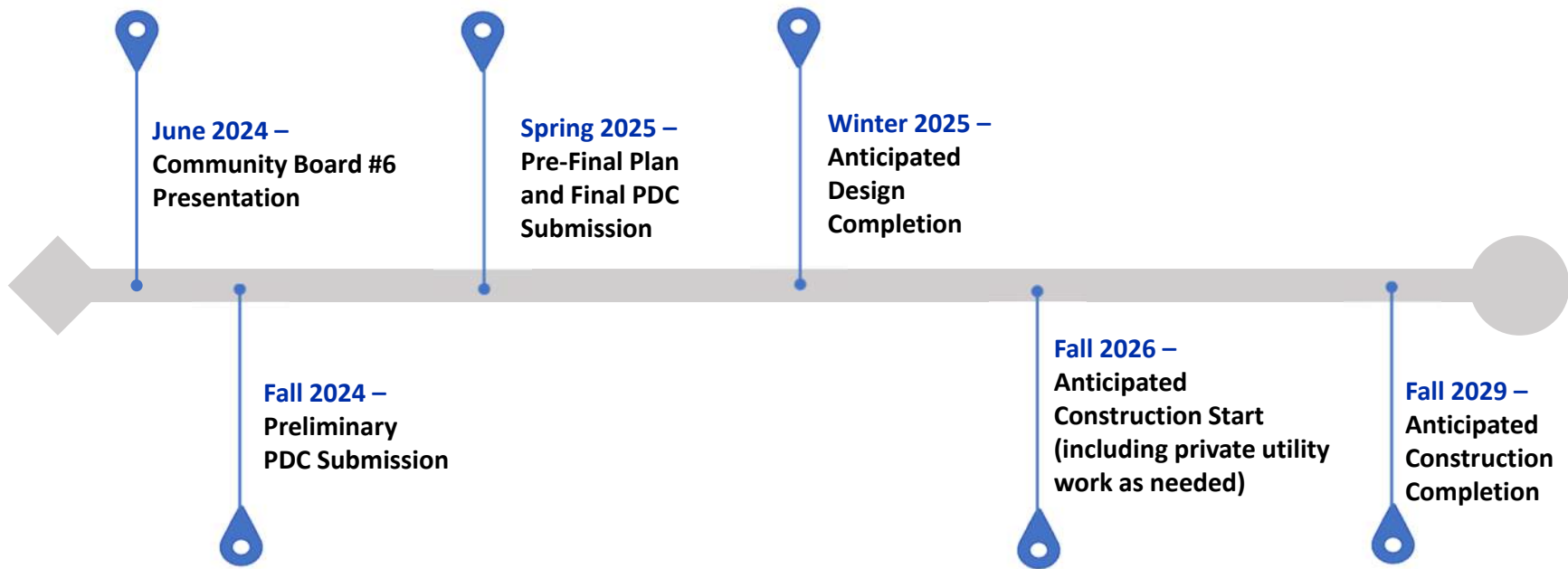
Project Goals:

- Enhance public spaces in permanent materials
- Improve pedestrian safety at Lexington Ave and Grand Central Terminal
- Facilitate property access and loading needs
- Add furnishings and plantings to enliven the corridor

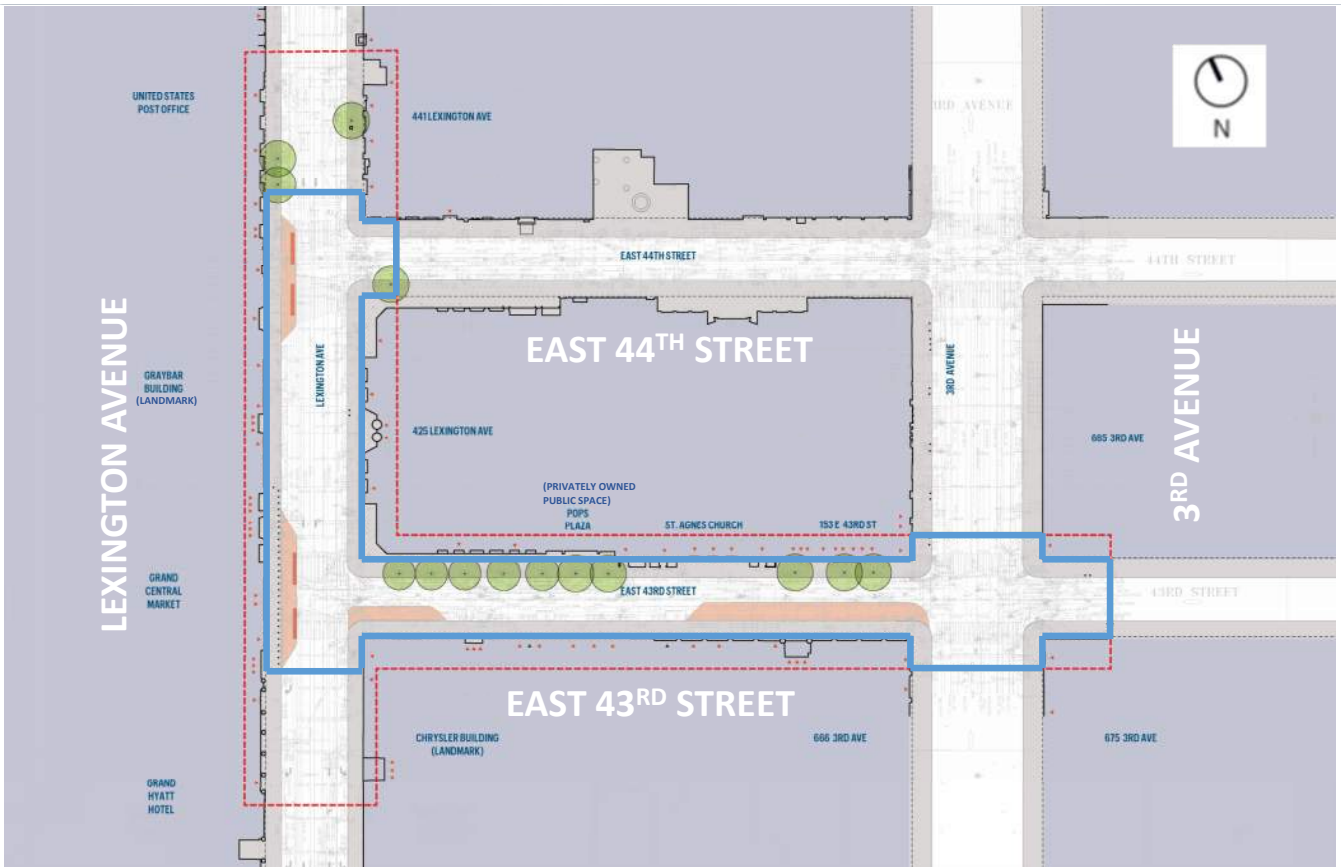
PROJECT ACTIVITY TO DATE



PROJECT SCHEDULE



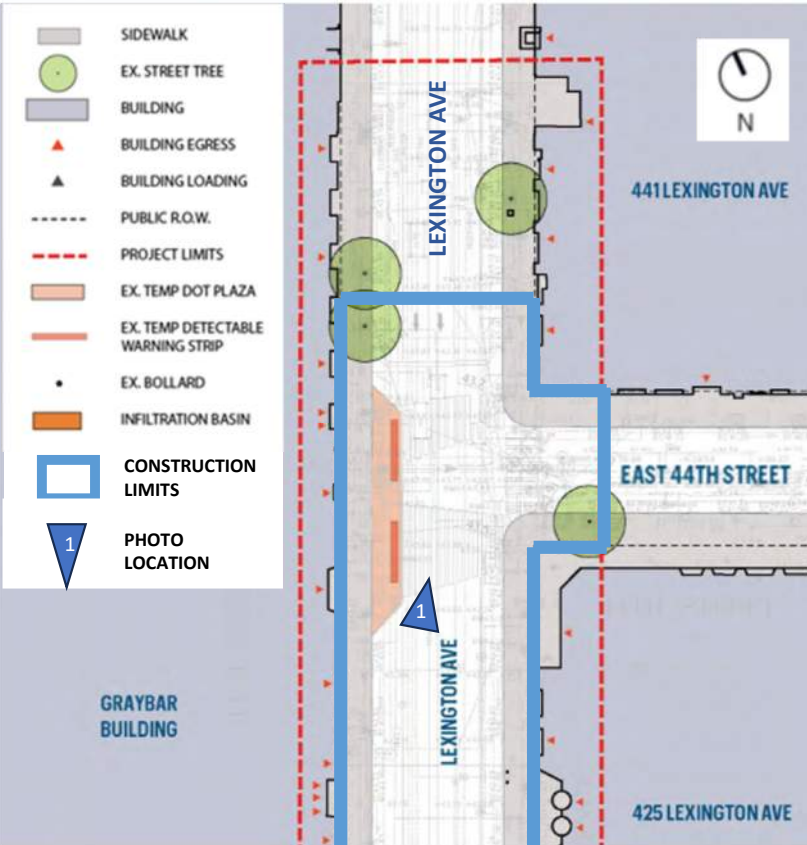
EXISTING CONDITIONS – PROJECT LIMITS



-  SIDEWALK
-  EX. STREET TREE
-  BUILDING
-  BUILDING EGRESS
-  BUILDING LOADING
-  PUBLIC R.O.W.
-  PROJECT LIMITS
-  EX. TEMP DOT PLAZA
-  EX. TEMP DETECTABLE WARNING STRIP
-  EX. BOLLARD
-  CONSTRUCTION LIMITS

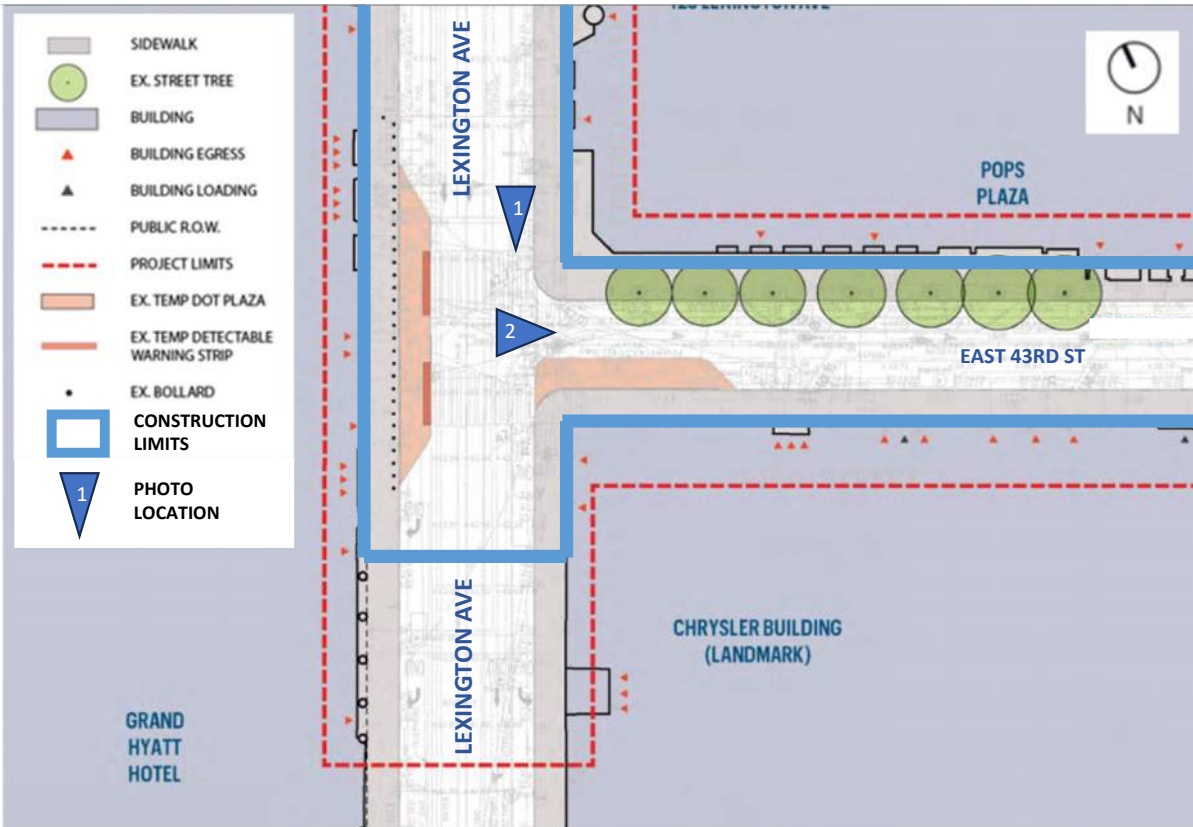


EXISTING CONDITIONS – LEXINGTON AVE AND E 44TH ST



EAST 44TH STREET AND LEXINGTON AVENUE LOOKING NORTH

EXISTING CONDITIONS – LEXINGTON AVE AND E 43RD ST

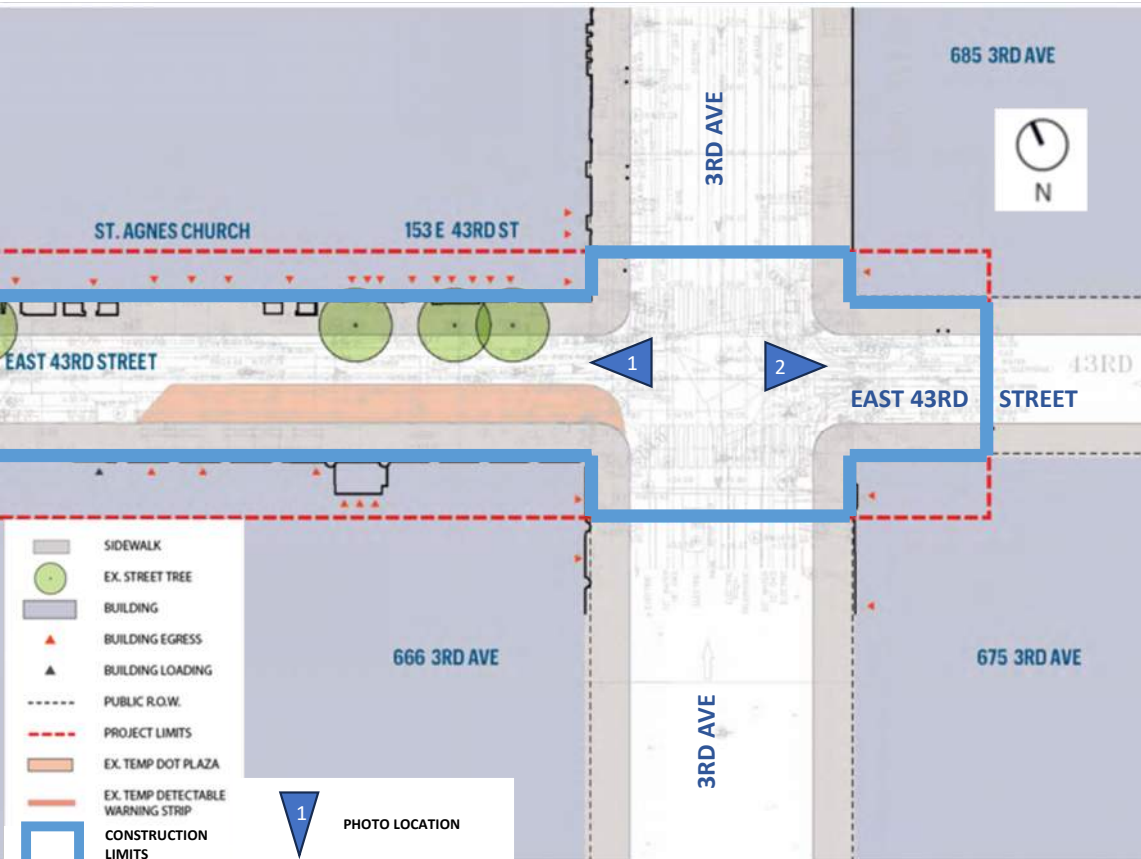


GRAND CENTRAL TERMINAL, LEXINGTON AVENUE AND EAST 43RD ST



LEXINGTON AVENUE AND EAST 43RD ST LOOKING EAST

EXISTING CONDITIONS – E 43RD ST AND 3RD AVE

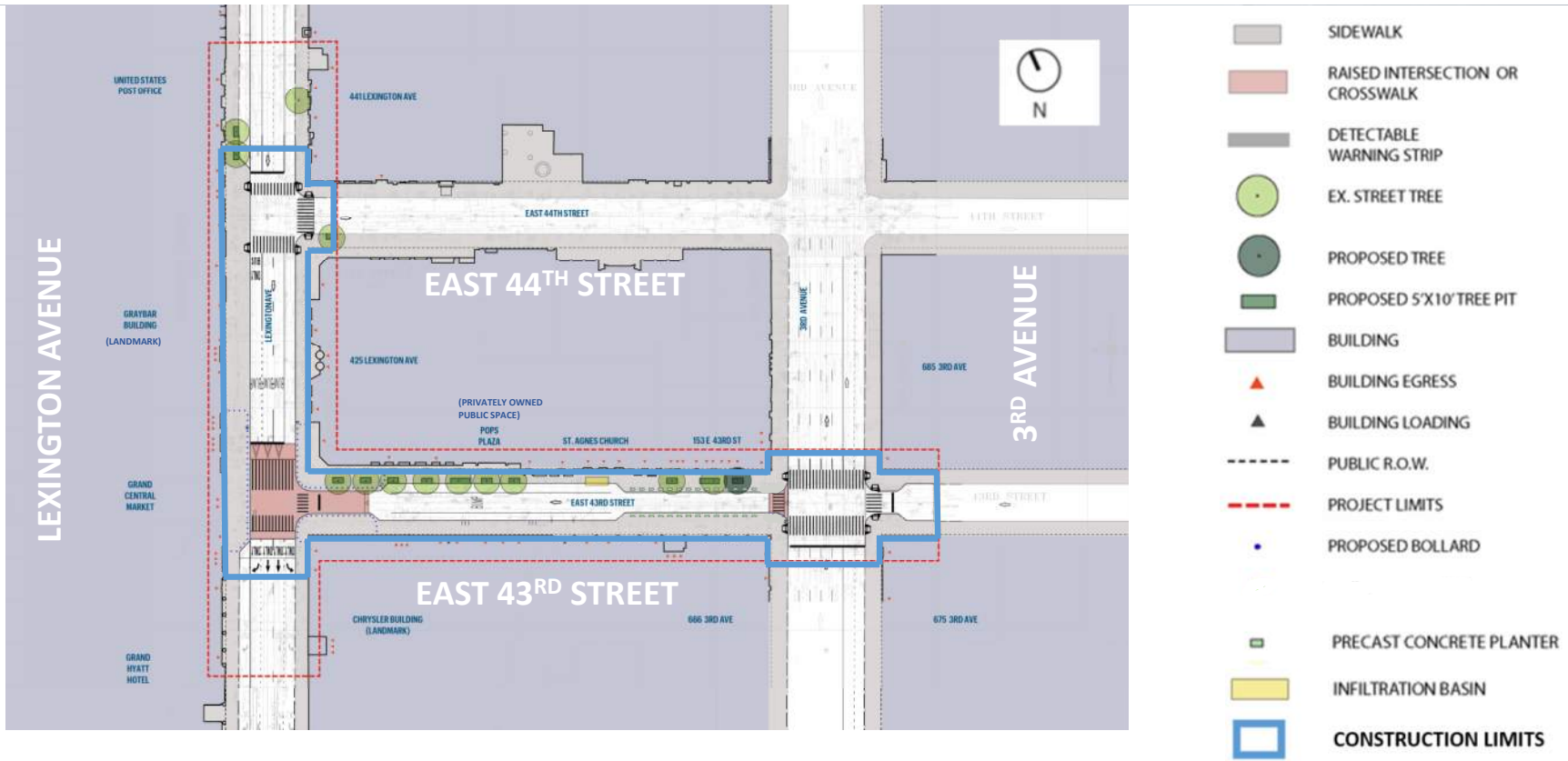


EAST 43RD STREET AND 3RD AVENUE LOOKING WEST

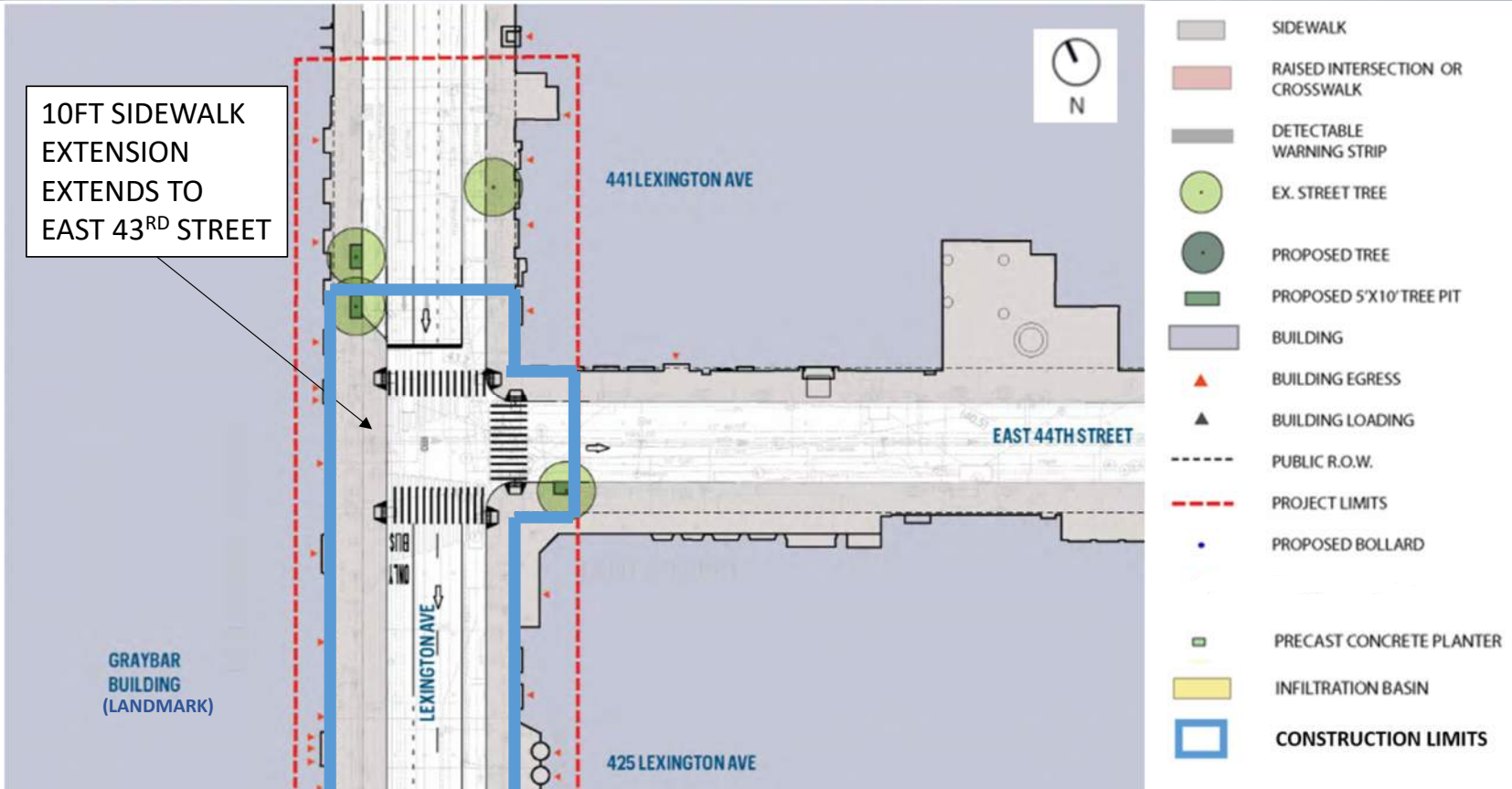


3RD AVENUE AT EAST 43RD STREET LOOKING EAST

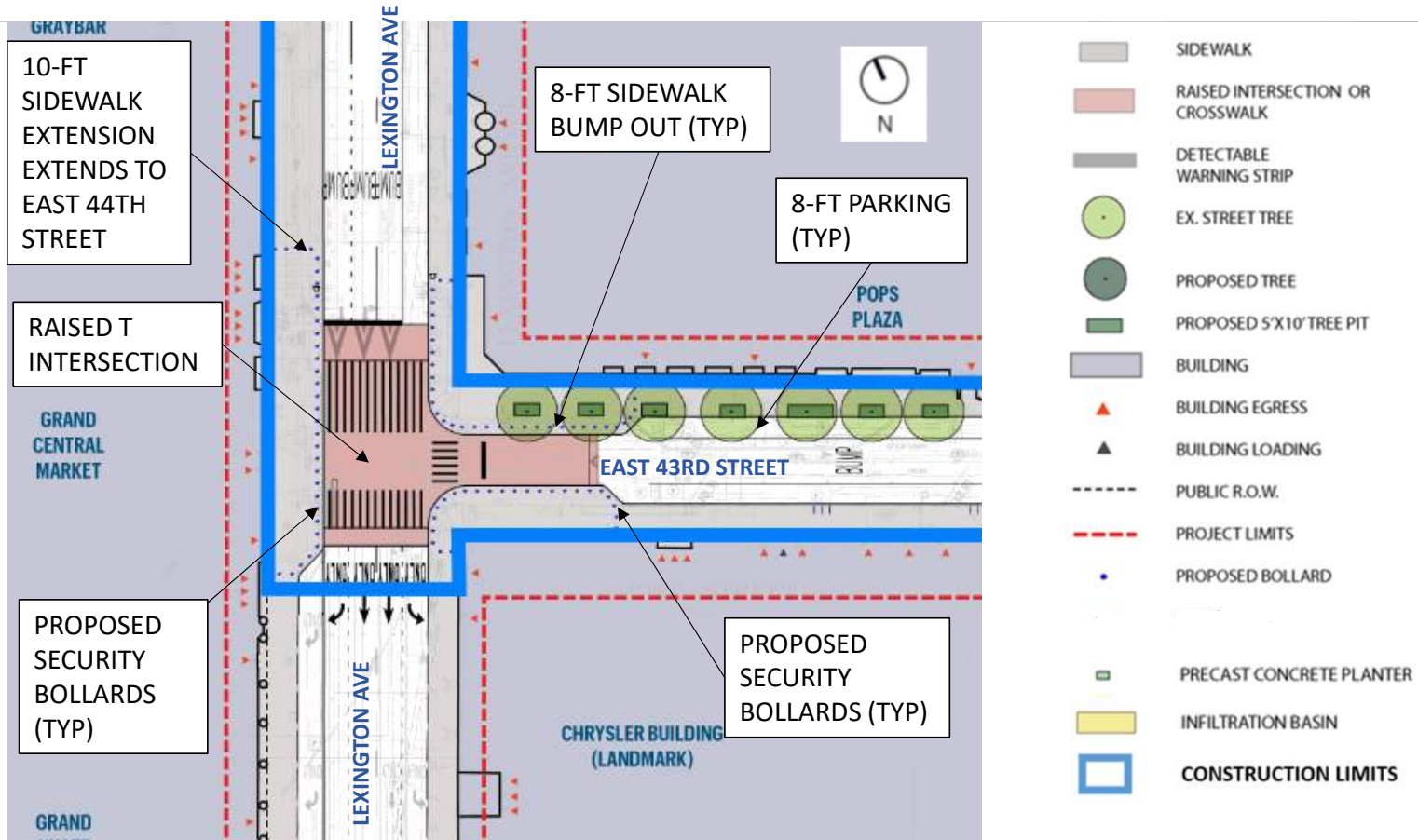
PROPOSED IMPROVEMENTS – PROJECT LIMITS



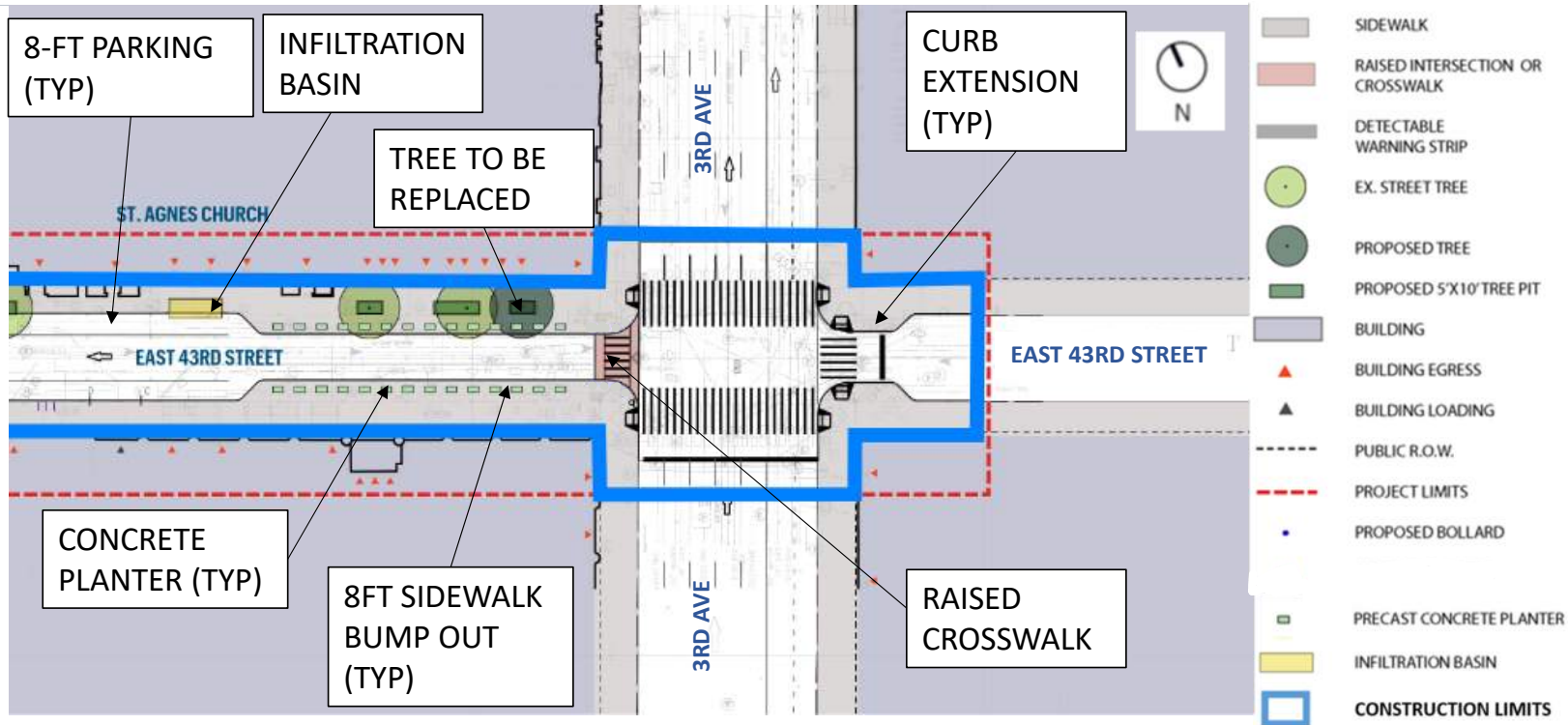
PROPOSED IMPROVEMENTS – LEXINGTON AVE AND E 44TH ST



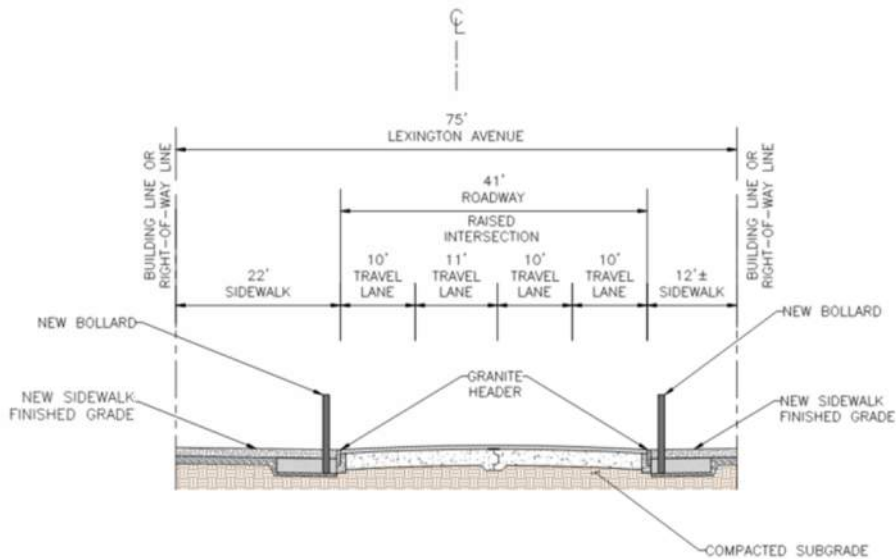
PROPOSED IMPROVEMENTS – LEXINGTON AVE AND E 43RD ST



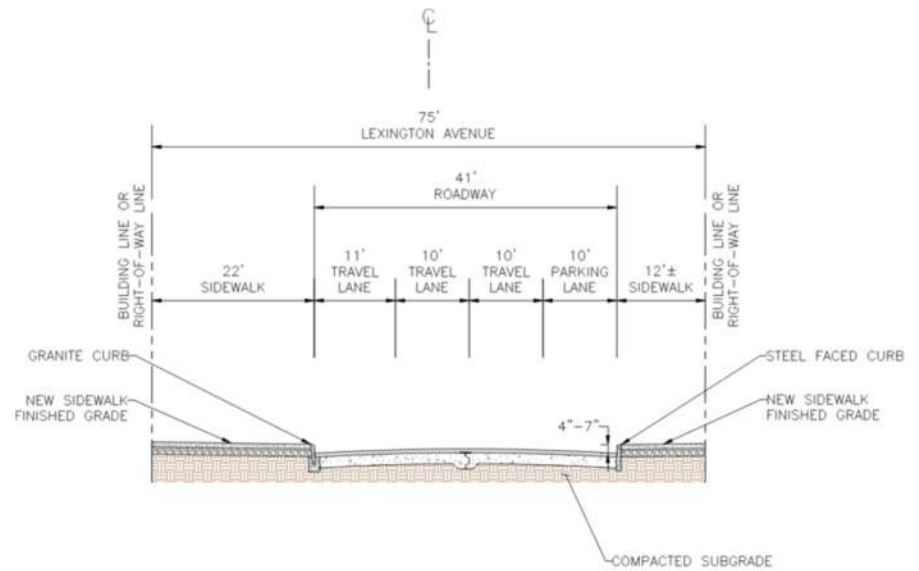
PROPOSED IMPROVEMENTS – E 43RD ST AND 3RD AVE



PROPOSED TYPICAL SECTIONS – LEXINGTON AVE

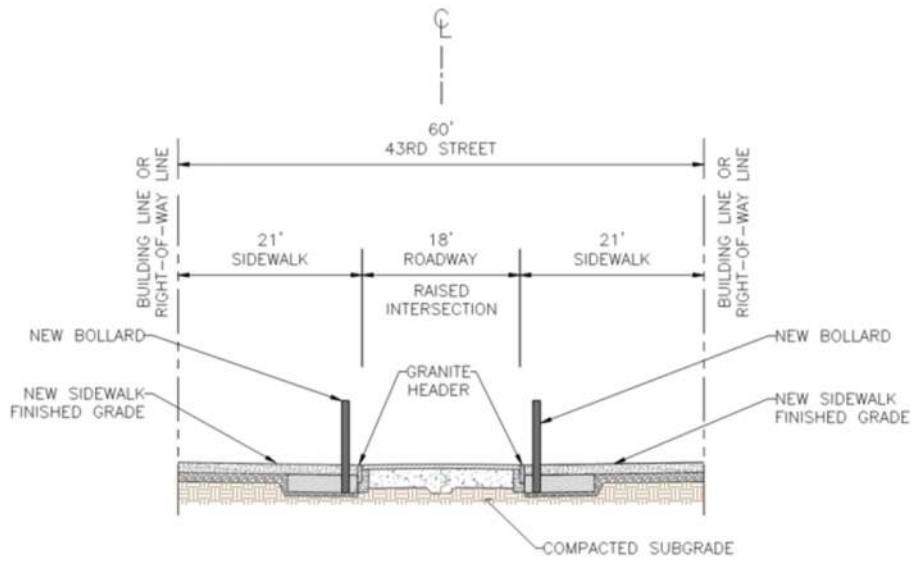


LEXINGTON AVENUE TYPICAL SECTION
WITH RAISED INTERSECTION
N.T.S.

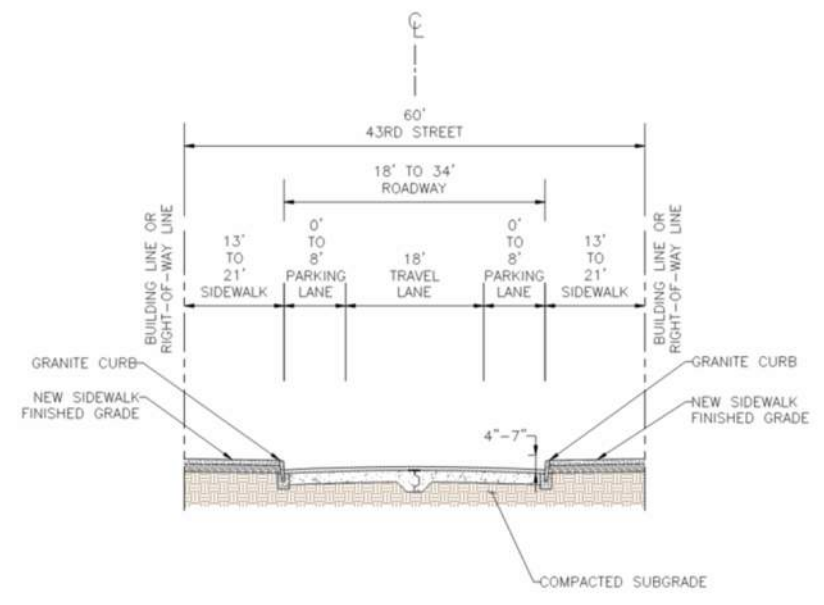


LEXINGTON AVENUE TYPICAL SECTION
N.T.S.

PROPOSED TYPICAL SECTIONS – EAST 43RD STREET



43RD STREET TYPICAL SECTION WITH RAISED INTERSECTION
N.T.S.



43RD STREET TYPICAL SECTION
N.T.S.

PROPOSED IMPROVEMENTS – ADDITIONAL SCOPE

- 12-inch Water Main Replacement
 - East 43rd Street between Lexington Avenue and 3rd Avenue
 - Intersection of East 43rd Street and 3rd Avenue
 - East 44th Street between Lexington Avenue to first hydrant
- 20-inch Water Main Replacement
 - Lexington Avenue between East 43rd Street and East 44th Street
- Repair existing sewers Interior Lining at Lexington Ave and East 43rd Street, as required
- Catch Basin Replacement with new connections to existing sewer manholes
- Electrical, Gas Main, Telecommunications Utility Work as required

COMMUNITY IMPACTS DURING CONSTRUCTION

- Roadway and sidewalk closures for construction
 - Work hours and work limits to be determined by NYC DOT OCMC stipulations.
 - Minimum 5-foot width for sidewalk travel for pedestrians at all times
 - Building access for tenants to be maintained during construction
- Temporary relocation of Access-A-Ride Bus Stop on 43rd Street near Lexington Avenue
- Parking Restrictions
- DEP Noise Code Regulations
- Tree pruning and removal and replacement of dead and diseased trees as necessary
- Rodent Control measures
- HWMMLEXAV - Lexington Avenue Pedestrian Safety Improvements on-going coordination
 - A NYC DDC Design-Build project
 - Water main replacement work may start in 2024



THANK YOU

Eric Adams
Mayor