



3rd Ave and 65th St

School Safety Improvements

Presentation for Community Board 7 | June 25, 2025



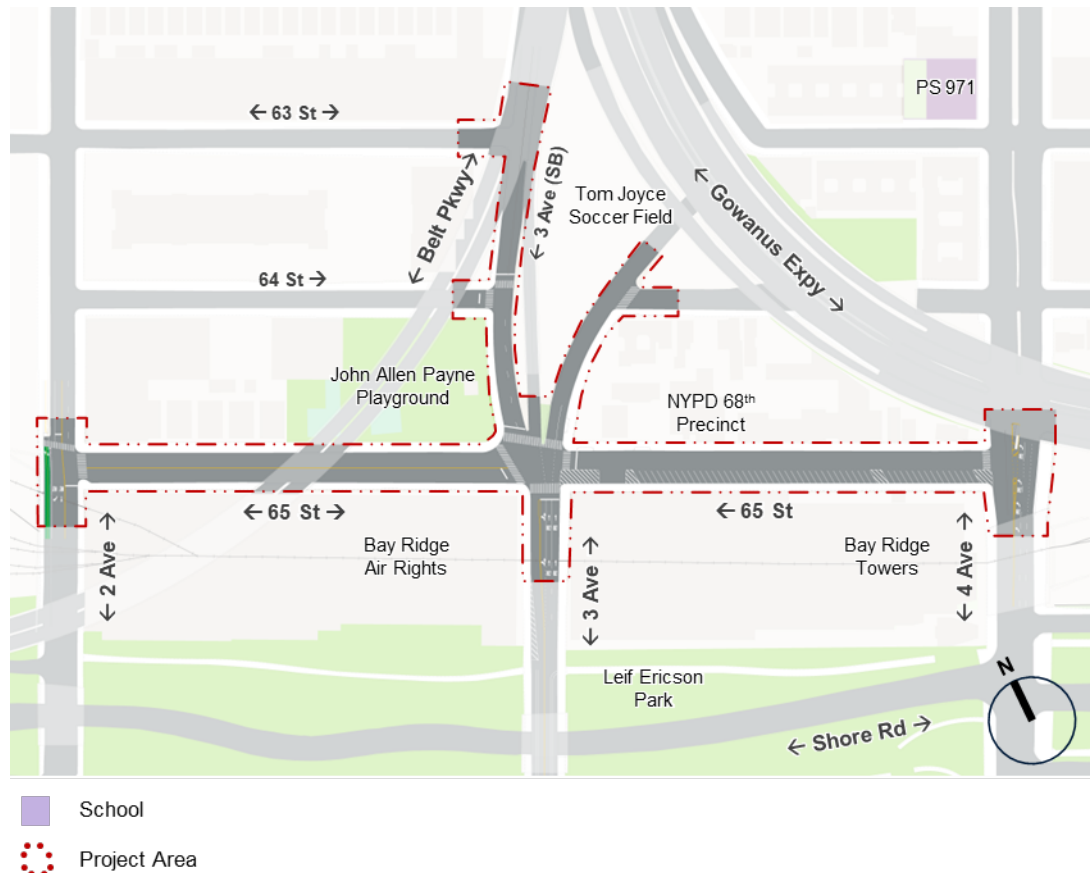
Background

1

Background

Project Area

- 4 nearby schools
 - MS 936
 - PS 503 and PS 506
 - PS 971
- Truck through routes
 - 3 Ave north of 65 St
 - 65 Street, between 3 Ave and 4 Ave
- Community raised pedestrian safety and connectivity concerns here during the BQE planning process
- NYPD and auto-oriented businesses along 65 St, between 3 Ave and 4 Ave



Background

Collision and Injury Data

- **56** total reported injuries
- **1** pedestrian fatality
- **20%** of injuries involve pedestrians and bicyclists

Injury Summary — 2019-2023 (5 Years)

Mode	Total Injuries	Severe Injuries	Fatalities	KSI
Pedestrian	2	0	1	1
Bicyclist	9	0	0	0
MVO	45	0	0	0
Other Motorized	0	0	0	0
Total	56	0	1	1





Existing Conditions

2

3 Ave and 65 St

Existing Conditions

- Wide and fast turns
- Long crossing distance exposes pedestrians to turning conflicts



3 Ave and 65 St northwest corner facing south

3 Ave and 65 St

Existing Conditions

- Long crossings increase pedestrian exposure
- Drivers speed toward the on-ramp through the crosswalk
- Pedestrians stranded at narrow median



3 Ave and 65 St

Existing Conditions

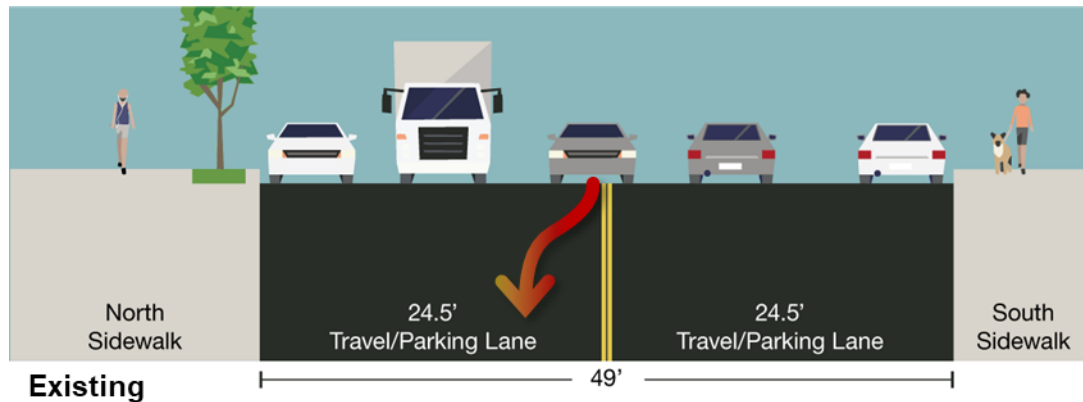
- Illegal parking blocks pedestrian visibility
- Pedestrians must step into traffic to be seen
- Double parking disrupts turning and through traffic



65 St, between 2 Ave and 3 Ave

Existing Conditions

- Wide lanes encourage illegal passing
- Double parking pushes vehicles into opposing traffic



3 Ave, between 63 and 64 Sts

Existing Conditions

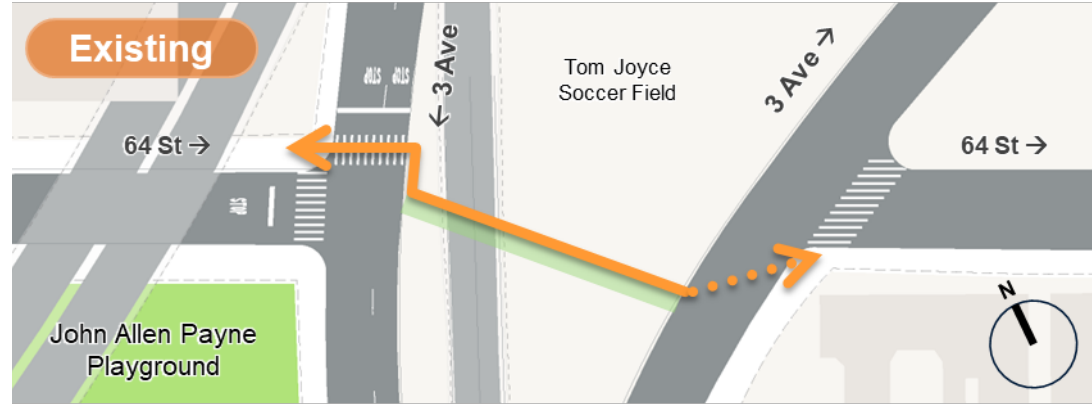
- Disorganized traffic flow
- Wide turns and lack of pedestrian visibility



3 Ave and 64 St

Existing Conditions

- Missing pedestrian connection to Tom Joyce Soccer Field
- Pedestrian visibility issues



3 Ave and 65 St

Existing Conditions

- Sidewalk parking blocks pedestrian visibility
- Gas station access leads to vehicles crossing the sidewalk, creating near-hit situations with pedestrians



3 Ave and 65 St facing southeast



3 Ave and 65 St facing northeast



Proposed Improvements

3

3 Ave and 65 St

Proposed Improvements

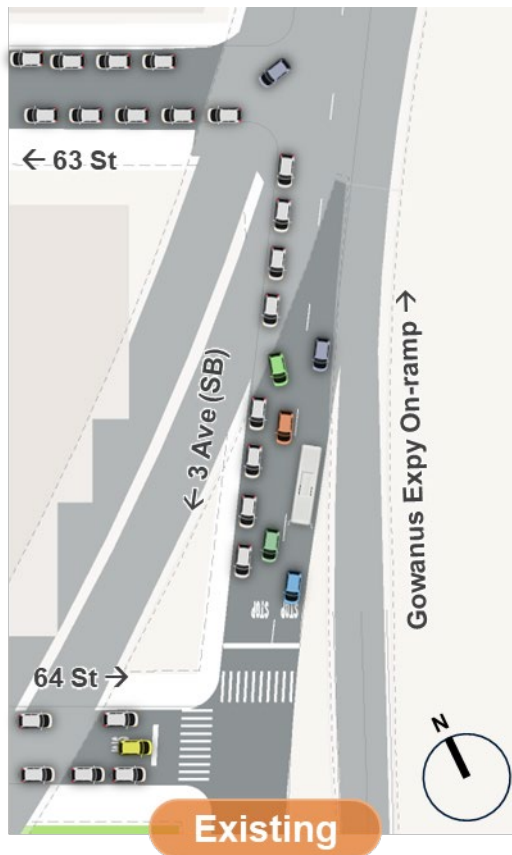
- Add painted curb extensions on all corners
- Mark one southbound lane on 3 Ave (64 St to 65 St)
- Install wide parking lanes (65 St, 2 Ave to 3 Ave)
- Move southbound bus stop 100' north



3 Ave, between 63 and 64 Sts

Proposed Improvements

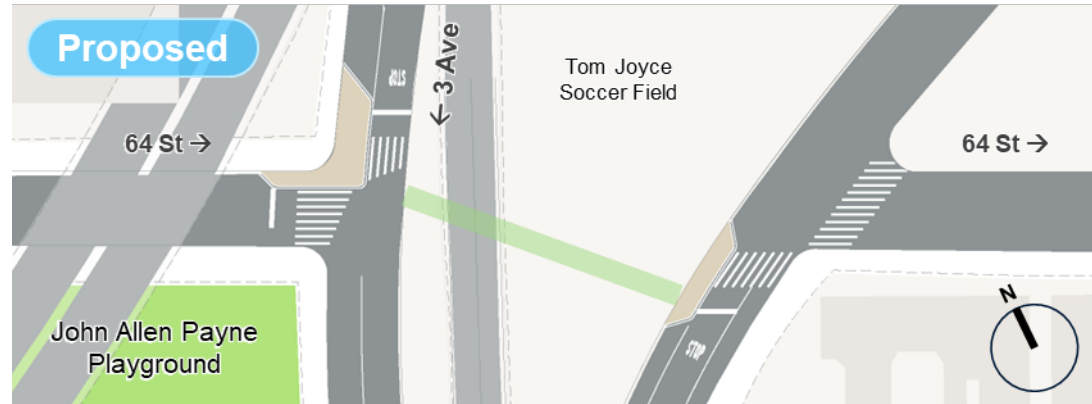
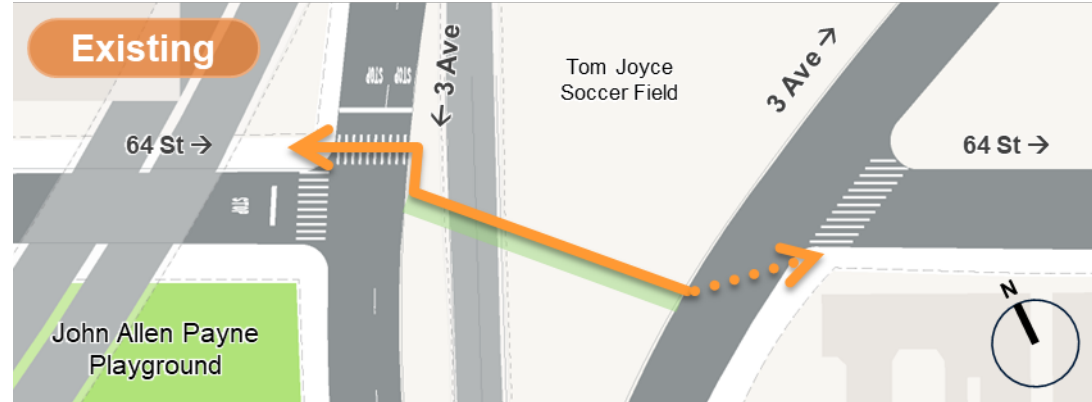
- Mark one southbound lane to reduce speeding and organize traffic
- Add painted curb extensions at 63 and 64 Sts to shorten crossings
- Calm turns and improve visibility for pedestrians



3 Ave and 64 St

Proposed Improvements

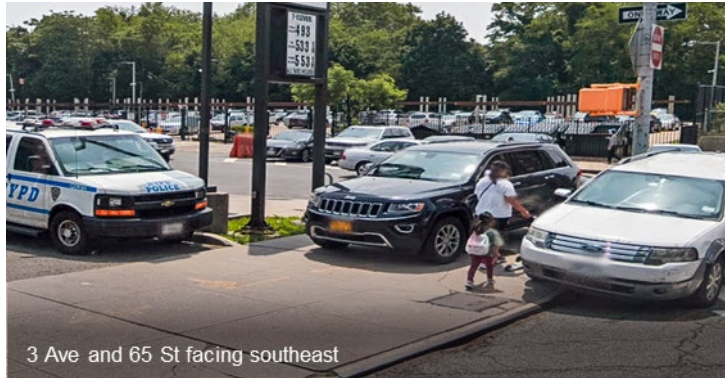
- Install stop-control and pedestrian crossing
- Add painted curb extension to improve pedestrian visibility



3 Ave and 65 St

Potential Improvements

- Pedestrian safety improvements through curb cut adjustments/closures
- Potential installation of back-of-sidewalk treatments to prevent illegal parking to improve pedestrian visibility



Summary

Proposed Improvements

Improves pedestrian safety

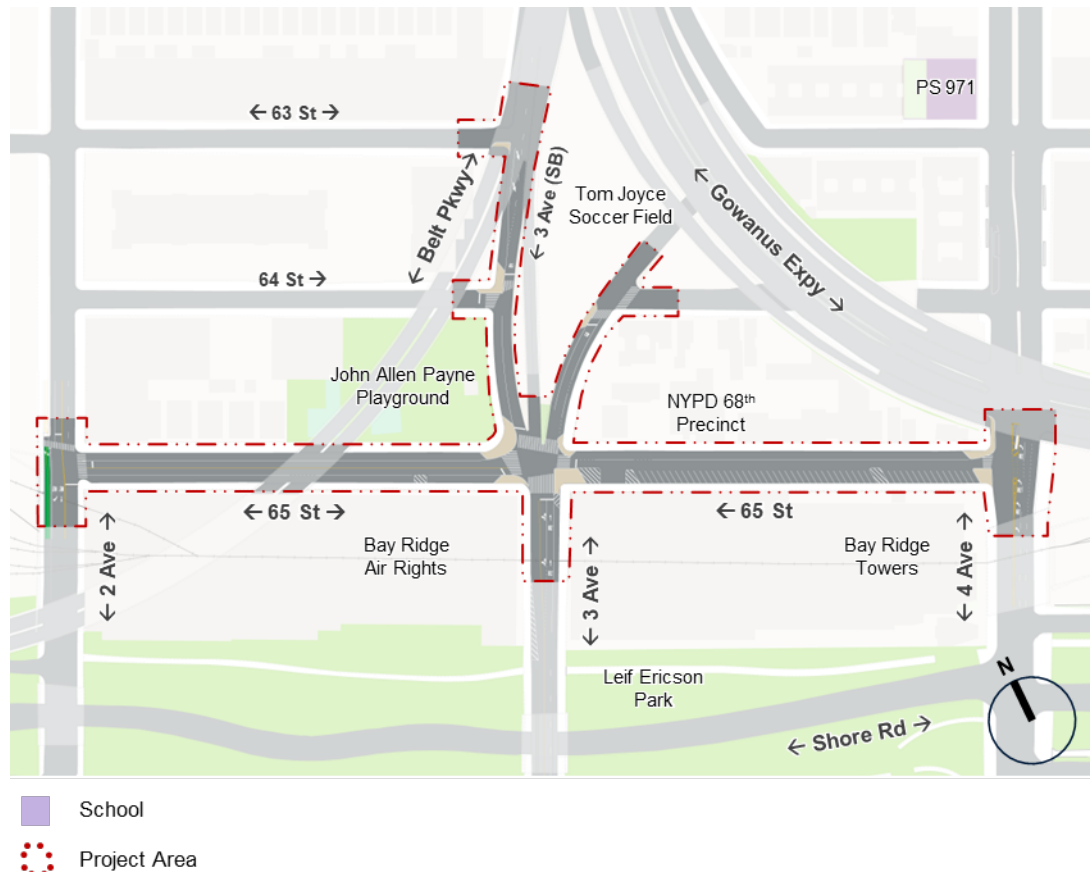
- **Shortens crossing distances** and increases pedestrian storage
- **Enhances visibility** by clearing corners and reducing parking conflicts

Calms vehicle movements

- Narrows overly wide lanes to **reduce speeding** and aggressive passing
- Introduces **tighter turn geometry** to discourage fast turning

Organizes the street

- Provides **dedicated space** for parking, travel, and curbside uses
- **Reduces double parking** and midblock friction



Thank You!

Questions?

NYC DOT Brooklyn
Borough Commissioner's Office
212.839.2510



NYCDOT



nyc_dot



nyc_dot



NYCDOT