

# Roosevelt Avenue Plaza







New York City Plaza Program  
Department of Transportation

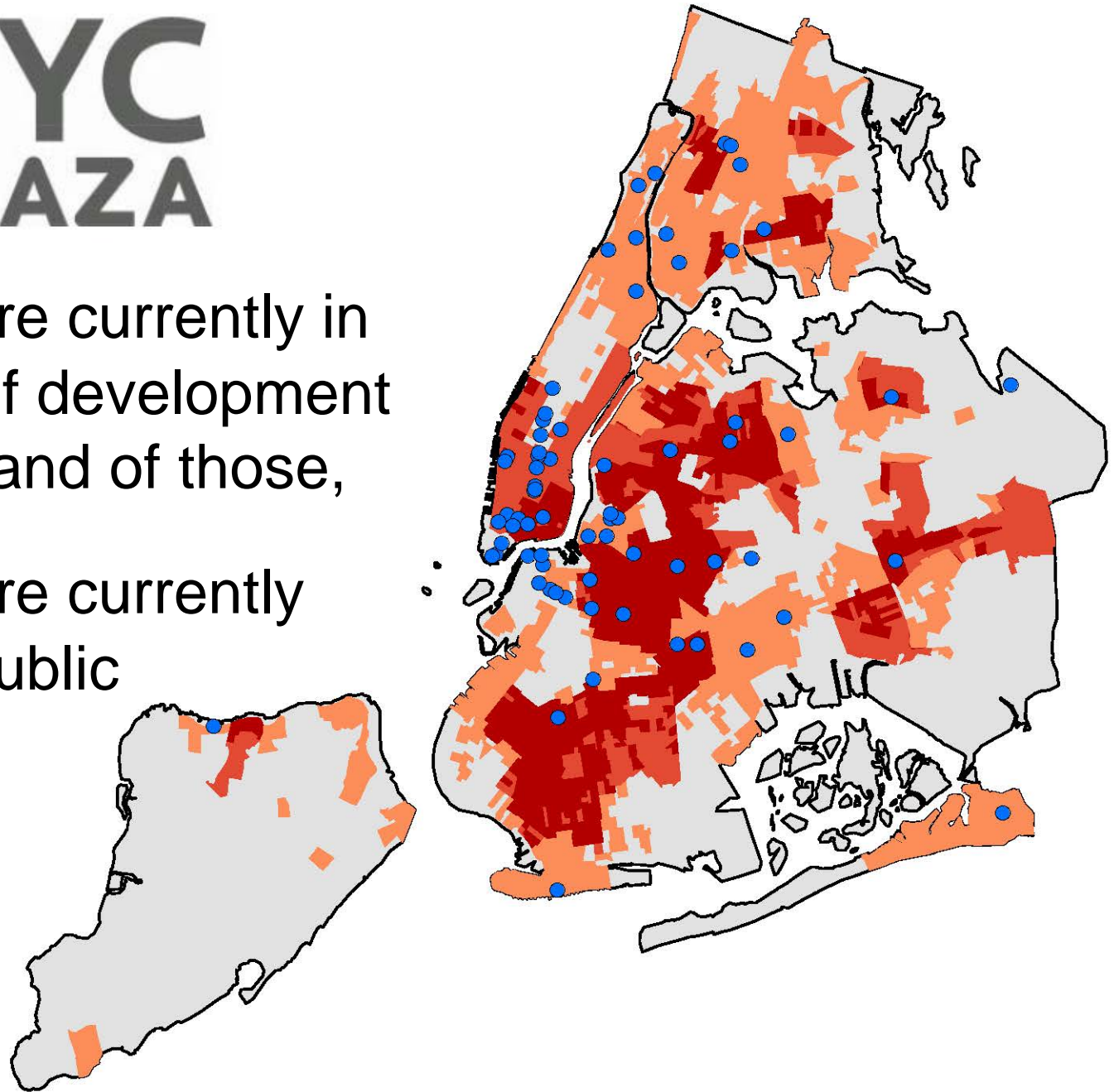






71 Plazas are currently in some stage of development or complete, and of those,

49 Plazas are currently open to the public








KAAQ  
Community stewardship









**NEW YORK STATE ASSEMBLY**

DISTRICT OFFICE:  
139-20 38th Avenue, Suite 10A, Flushing, New York 11354  
(718) 636-6262 • FAX: (718) 636-1268

ALBANY OFFICE:  
Room 420, Legislative Office Building, Albany New York 12248

COMMITTEES

Education

Housing

Public Services

Corporations, Authorities and Commissions

Governmental Operations

Children and Families

October 29, 2014

Emily Weidenhof  
Department of Transportation  
55 Water Street  
New York, NY 10041

Re: NYC Plaza


Dear Ms. Weidenhof:

I am writing to you to create a pedestrian plaza at the 55 Water Street Station. Through its dedication to the community and its efforts to promote and small business, it has launched the Midtown East New Year's Eve event to be a tourist and local attraction.


Given its dedication to support their NY neighborhood in our local economy, I am confident that the Korean American Association of Queens will successfully maintain and utilize their proposed plaza to the community's greater use.

Thank you in advance for your assistance to contact me.

Sincerely,



Ron Kim  
Member of Assembly  
District 40, Queens



**THE COUNCIL OF THE CITY OF NEW YORK**

**PETER KOO**

DISTRICT OFFICE:  
130-27 86th Avenue, Suite 300  
Jamaica, NY 11435  
(718) 636-6262 • FAX: (718) 636-1268

CITY HALL OFFICE:  
200 Broadway, Room 1417  
New York, NY 10007  
(212) 486-7250

CHAIRPERSON  
LABOR/INDUSTRY

COMMITTEES

CONTRACTS

CULTURAL AFFAIRS

HEALTH

IMMIGRATION

JUVENILE JUSTICE

CHAIR

SEN. CHARLES E. SCHWAB, CO-CHAIR

COMMITTEES

AGRICULTURE

FINANCE AND COMMUNITY DEVELOPMENT

HEALTH

IMMIGRATION

JUVENILE JUSTICE

October 9th, 2014

Emily Weidenhof  
Department of Transportation  
55 Water Street  
New York, NY 10041


Dear Ms. Weidenhof:

I am writing to you to create a pedestrian plaza at the 55 Water Street Station. Through its dedication to the community and its efforts to promote and small business, it has launched the Midtown East New Year's Eve event to be a tourist and local attraction.

Given its dedication to support their NY neighborhood in our local economy, I am confident that the Korean American Association of Queens will successfully maintain and utilize their proposed plaza to the community's greater use.

Thank you in advance for your assistance to contact me.

Sincerely,



Peter Koo  
Councilman  
District 20

October 3, 2014

Emily Weidenhof  
Department of Transportation  
55 Water Street 9th Floor  
New York, NY 10041

Dear Ms. Weidenhof:


I am writing in support of the Korean American Association of Queens (KAAQ) for NYC Plaza Program in reference to their midday plaza application, ED# 454685421. The role of KAAQ has been critical in serving Asian American community throughout Queens.

For almost 30 years, the Korean American Association of Queens has been an important presence in the Queens Asian American community. Their quick and well-managed responses to local business concerns helped create the formation of the "Murray Hill Merchant Association" which brought a voice to those business owners.

Given its dedication to the community and its expertise in communicating and engaging the community, I am confident that the Korean American Association of Queens will successfully maintain and utilize their proposed plaza to the community's greater use.

My office looks forward to continued partnership with the Korean American Association of Queens in their efforts to engage, empower, and serve the community.

Sincerely,



HON. PAUL A. VALLONE

Letters of Support  
KAAQ Applied to Round 7 in 2014





5 MIN WALK

Q13 Q28 QM3

Q15 Q15A

LIRR

Q12 N20 N21

NORTHERN BLVD

35th Ave

5th Ave

ROOSEVELT AVE

155th STREET

41st Ave

Barclay Ave

Depot Rd

Station Rd

Station Rd

Kang Ho Dong Baekjeong

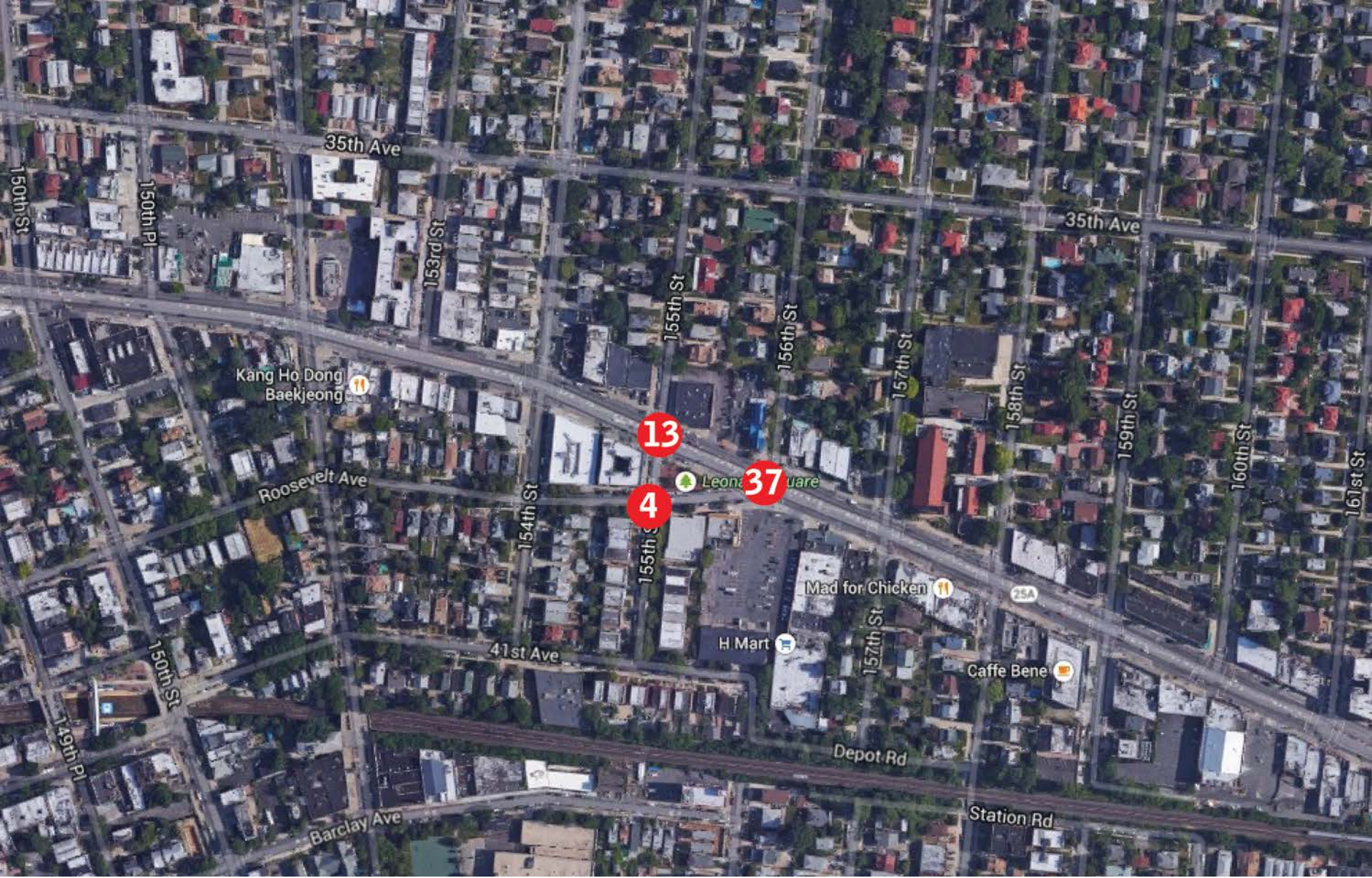
Leonardo's Store

Mad for Chicken

H Mart

Caffè Bene





Crash History  
2009-2013, 54 crashes





Existing Conditions  
155<sup>th</sup> Street looking south





Existing Conditions  
155<sup>th</sup> Street looking west





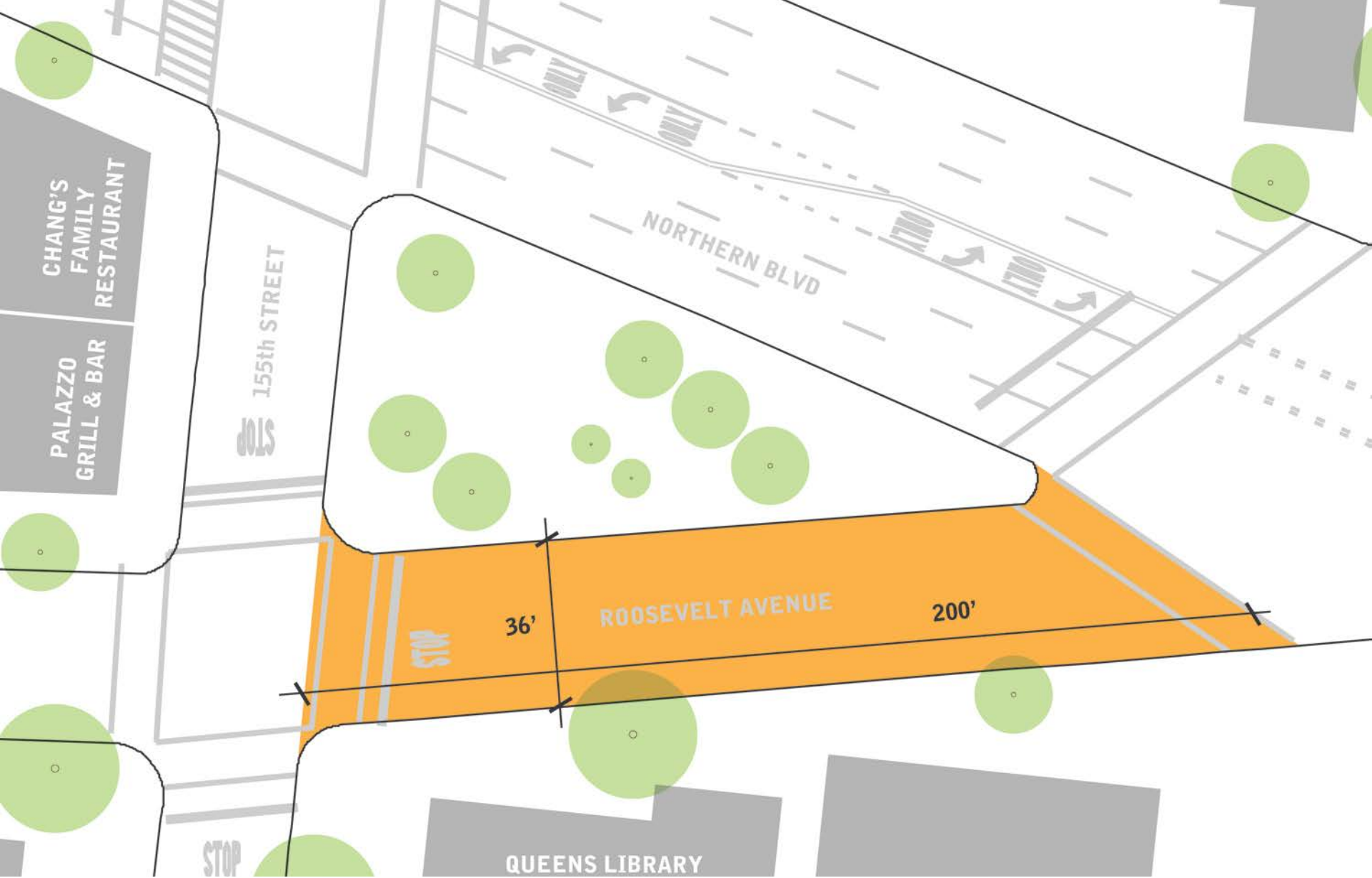
Existing Conditions  
Roosevelt Avenue looking west





Existing Conditions  
Base map

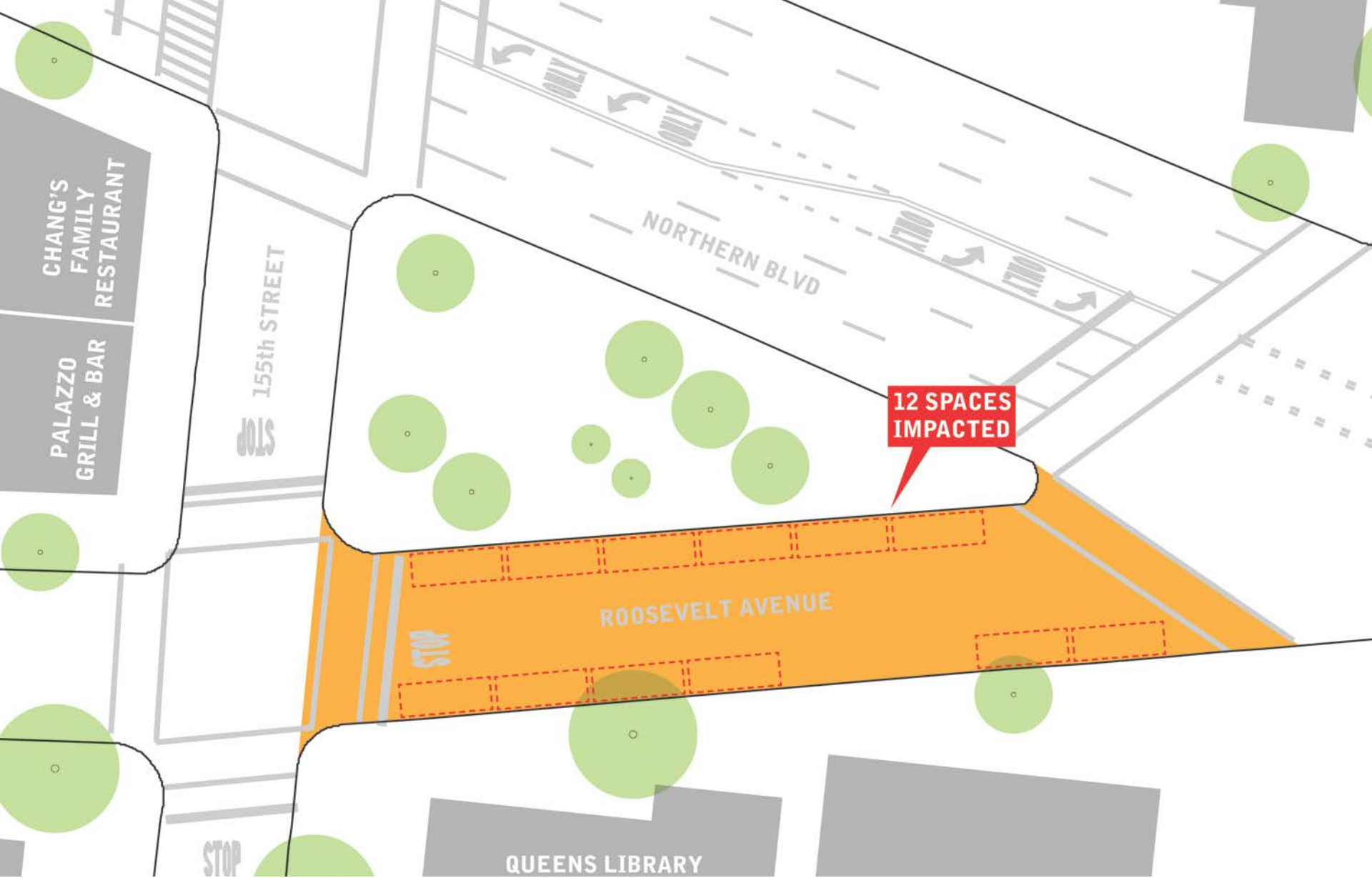




## Existing Conditions

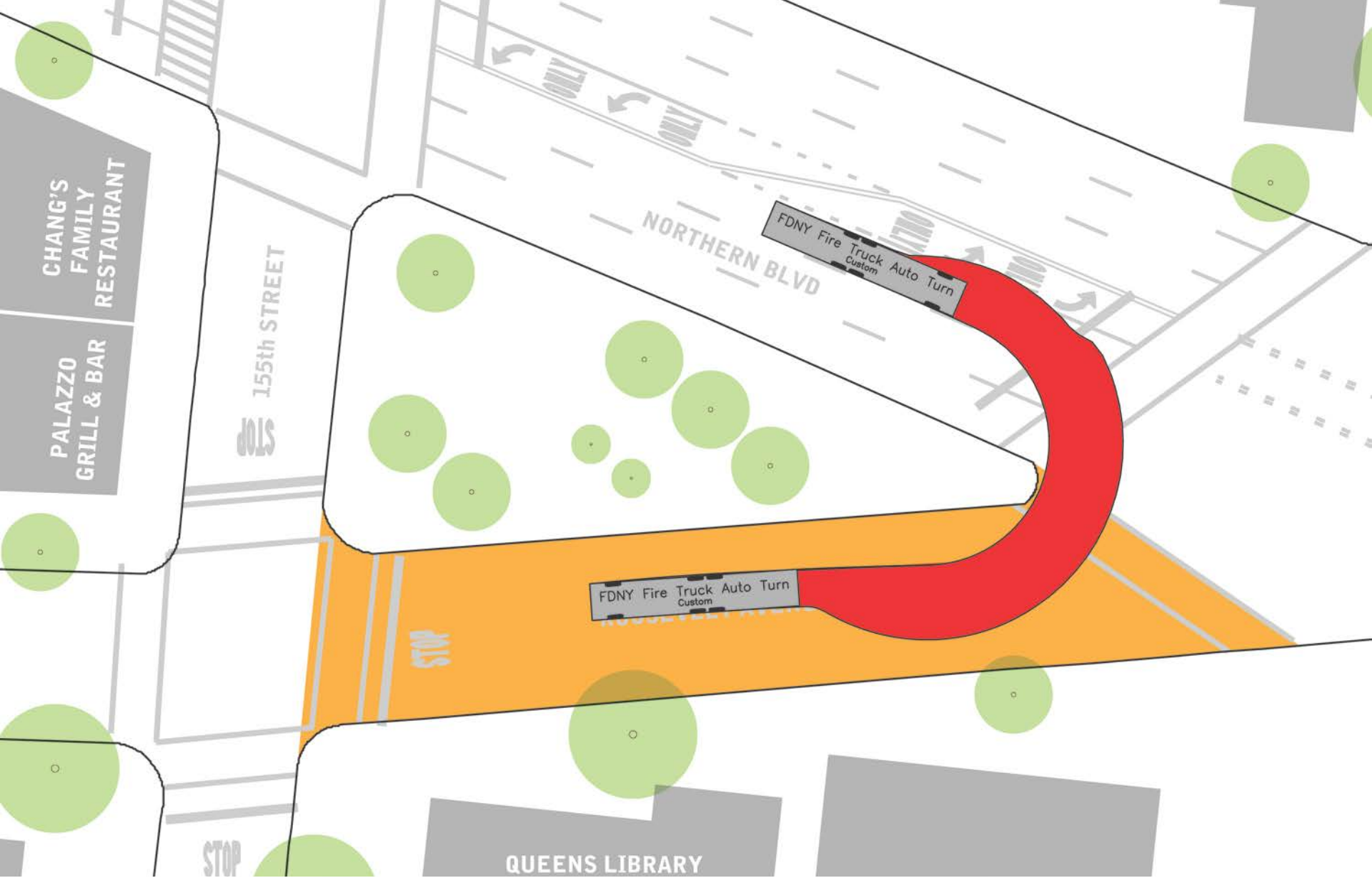
Potential Plaza Configuration: 7,000 SF





Existing Conditions  
Parking Impact



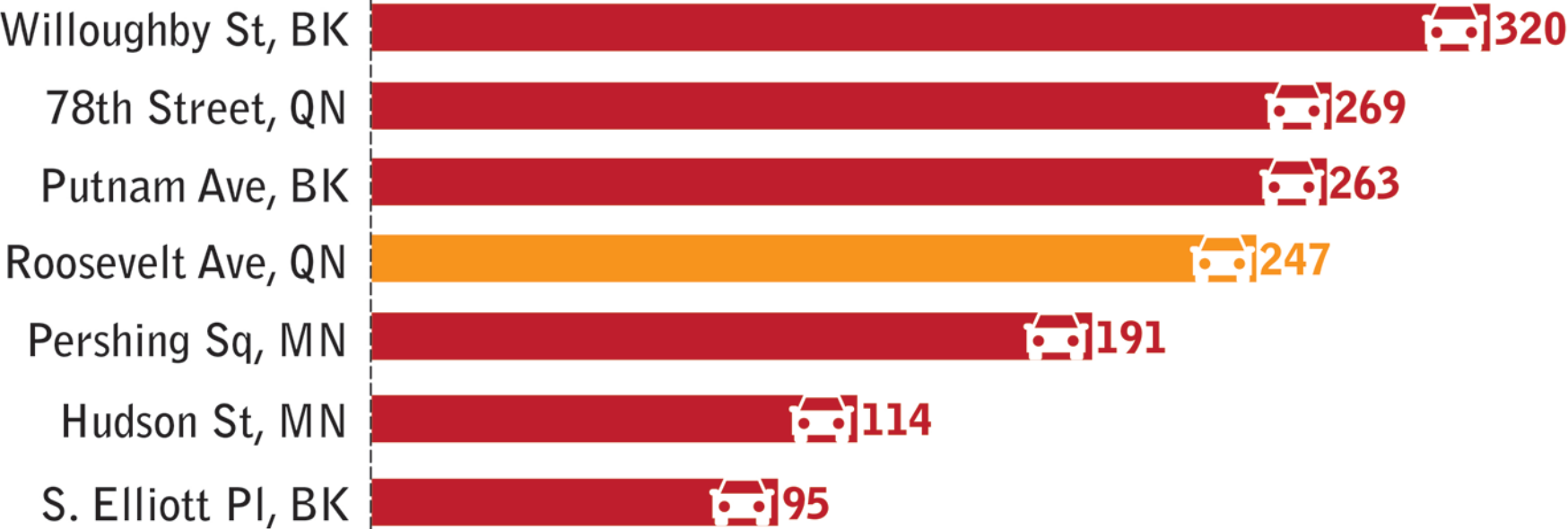


Existing Conditions  
FDNY Access



STREET CLOSURE

PEAK # OF VEHICLES / HOUR







2012, Corona Plaza  
Corona, Queens





2012, Fowler Square  
Fort Greene, Brooklyn





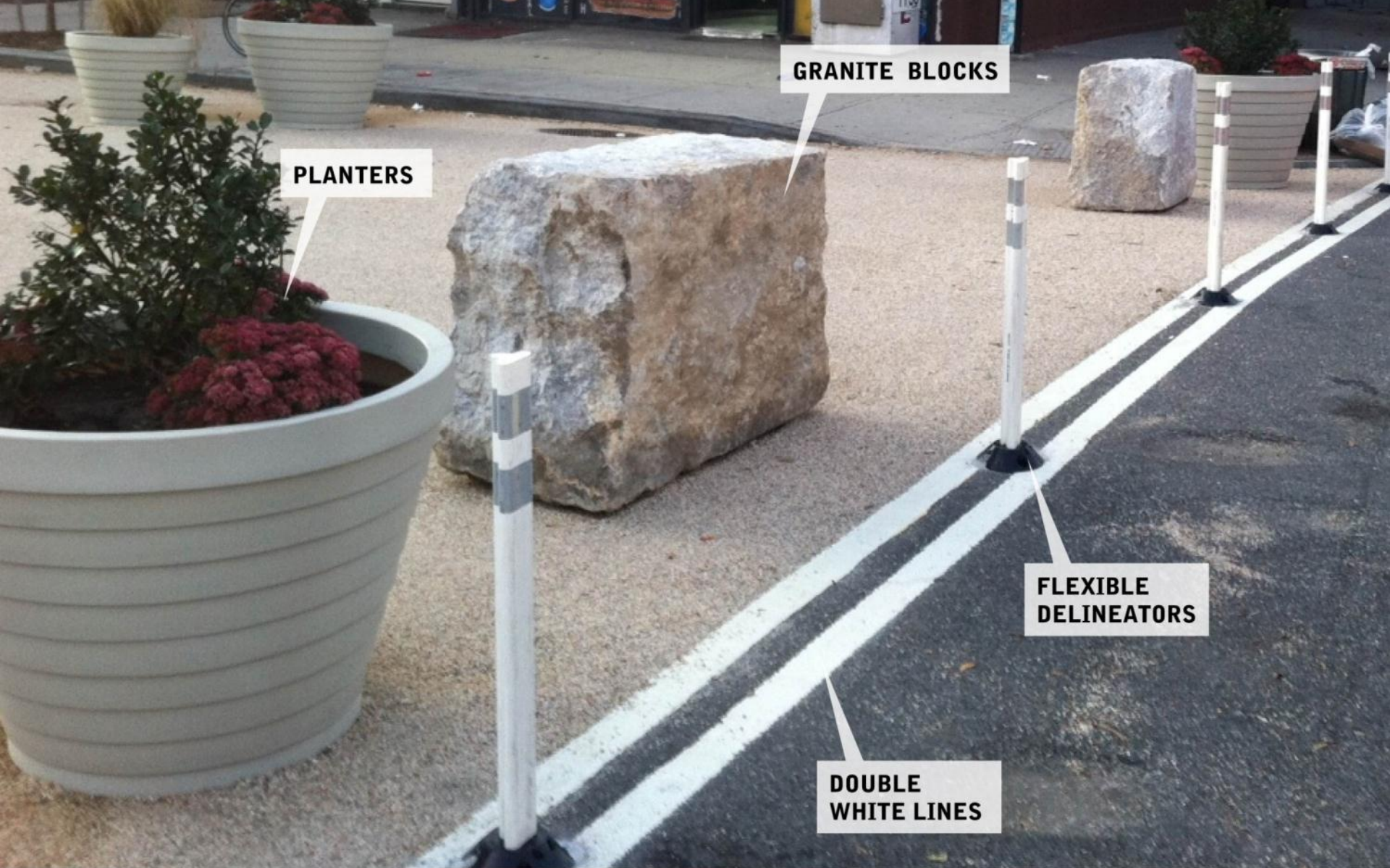
2011, Putnam Plaza  
Clinton Hill, Brooklyn





**Tool Kit**  
Fowler Square in Fort Greene, Brooklyn





## Tool Kit

Putnam Plaza in Clinton Hill, Brooklyn





Permanent seating:  
NYC DOT CityBench





Bike parking:  
NYC Bike Rack







Tool Kit  
Umbrellas at Chelsea & Flatiron Plazas





## Plaza Maintenance

KAAQ would be responsible for plaza maintenance.





Full access to the public

Plaza is public, DOT property & amenities are non-exclusive. Anyone can apply to hold an event in a plaza, [www.nyc.gov/sapo](http://www.nyc.gov/sapo)



# Programming

Ribbon Cutting Event

Recurring Small-Scale Events

Annual Events

Markets





# Community Workshop #1

Thursday, April 16, 6pm – 8pm

Korean Community Services

35-56 159<sup>th</sup> St., Flushing



**Sponsors:** Presented by the NYC DOT and KAAQ

**Subject:** We want your input on a new pedestrian public space proposal.

**Date:** Thursday, April 16, 2015

**Time:** 6:00 - 7:30 p.m.

**Location:** 35-56 159 Street Flushing, NY 11358

**Contact:** Emily Weidenhof at NYC DOT, 212-839-4325 or eweidenhof@dot.nyc.gov, for all questions, including accessibility accommodations. Please provide as much advance notice as possible to allow us to provide optimal access.

## Workshop Goals:

Discuss ways to enhance public space

Brainstorm ways to create safer streets

Gather design input

Discuss traffic



ROOSEVELT AVENUE PLAZA PUBLIC WORKSHOP // APRIL 16TH, 2015





Roosevelt Ave. between 155<sup>th</sup> St. & Northern Blvd.

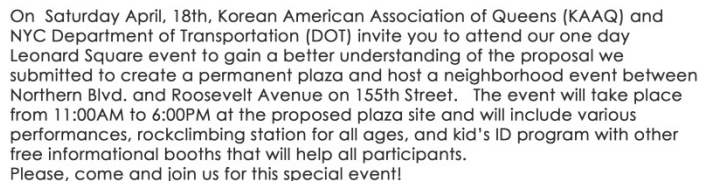
- ## "ONE DAY PLAZA"

**11AM to 6 PM**

**with activities for friends,families,  
and neighbors of all ages from all different  
ethnicity and communities in Queens**

- Balloon and Gift giveaway

## ONE DAY PLAZA LOCATION





# One-Day Plaza #2

Friday, August 7<sup>th</sup> 11am – 6pm

Roosevelt Ave. between 155<sup>th</sup> St. & Northern Blvd.

- Approximately 115 surveys collected
- Results currently being tabulated

## "ONE DAY PLAZA"

Friday, August 7, 2015

11AM to 6 PM

A one day plaza

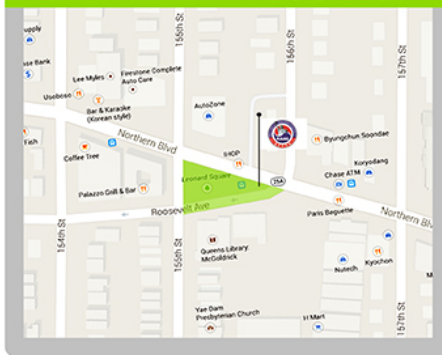
with activities for friends, families,  
and neighbors of all ages from all different  
ethnicities and communities

- Curly The Clown & Friends Performances
- Korean & Other Performances
- Free Balloons and Gifts
- NYPD Kid's ID Program
- Different Info Booths

**We have limited booth spaces, so please act fast to reserve a spot.**

**718-359-2514**  
**info@kaaq.org**

### ONE DAY PLAZA LOCATION



On Friday August 7th, Korean American Association of Queens (KAAQ) and NYC Department of Transportation (DOT) want to invite you and your family to attend our second One Day Plaza event to promote a better understanding of the proposed plan to create a permanent plaza that is a safe and clean community space for our diverse community. The proposed location is in between Northern Blvd. and 155th Street on Roosevelt Avenue. The event will take place from 11AM to 6PM at the proposed plaza site and will include various performances and activities for all ages including free informational booths that will help all participants. Please, come and join us on this extremely important community event!

