

# Atlantic Avenue Capital Project Vision Zero Great Streets

Corridor Safety Improvements: Georgia Ave to Conduit Blvd

2015



**VISION  
ZERO**

NEW YORK CITY



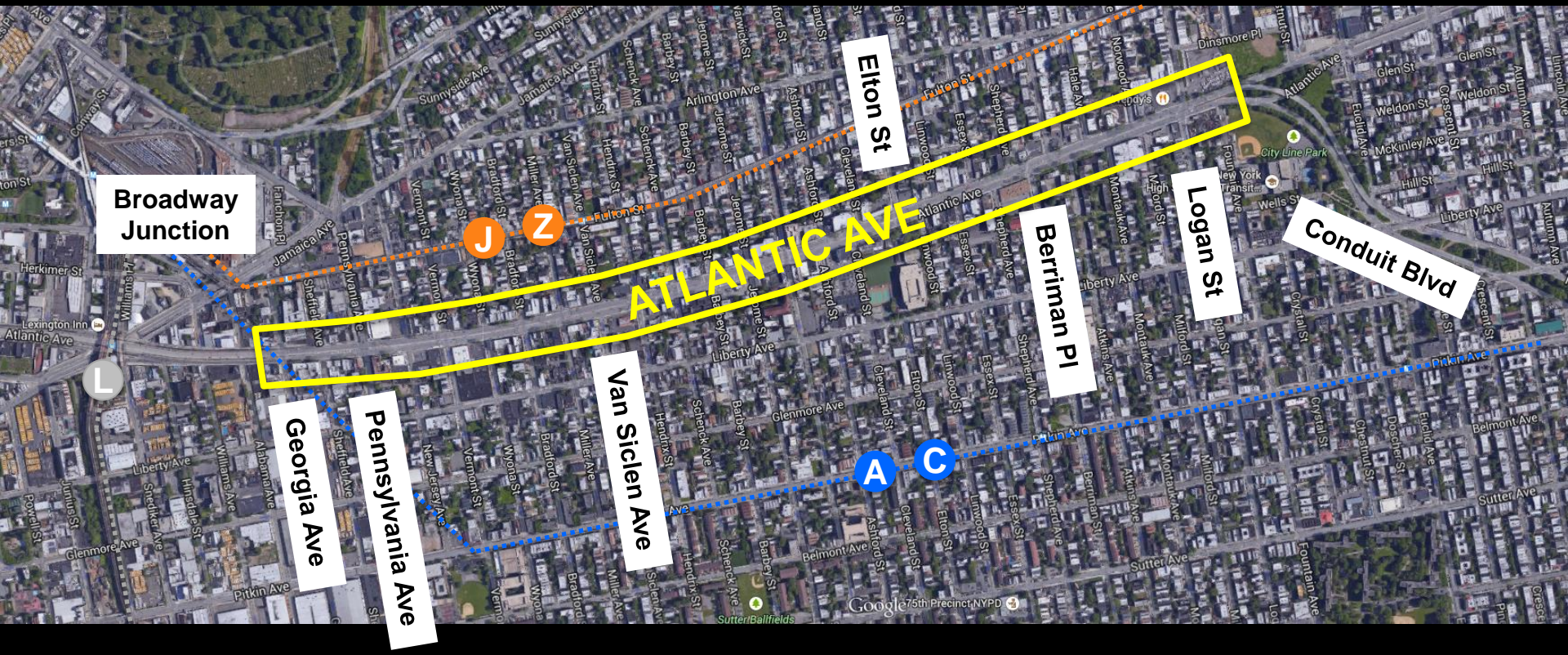
**NYC  
DDC**

Department of  
Design and  
Construction

New York City Department of Transportation  
Presented to Community Board 5 on June 24, 2015

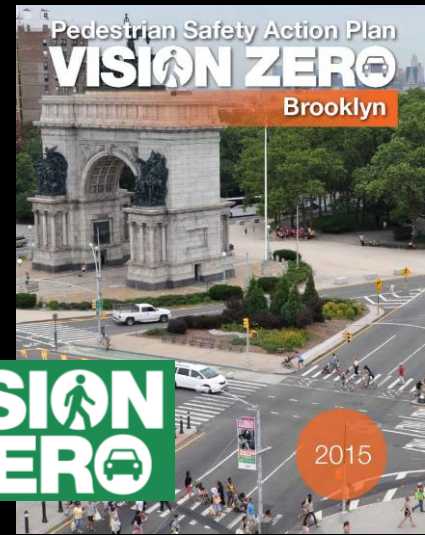
# Project Background

- Part of Mayor de Blasio's Great Streets initiative
- Vision Zero Priority Corridor
- DOT has received many community requests for safety improvements
- Major east-west arterial, located between Broadway Junction (A, C, J, Z, L) and J, Z subway line along Fulton St and C subway line along Pitkin Ave



# Project Need: Safety Data

- Atlantic Ave is a Vision Zero Priority Corridor
  - As identified in Brooklyn Pedestrian Safety Action Plan
- Top 10% of Brooklyn corridors for total crashes
- Highest concentration of crashes along project corridor at Pennsylvania Ave and Logan St



## Atlantic Ave - Georgia Ave to N Conduit Ave, BK Injury Summary, 2009-2013 (5 Years)

	Total Injuries	Severe Injuries	Fatalities	KSI
Pedestrian	82	10	1	11
Bicyclist	20	2	0	2
Motor Vehicle Occupant	891	25	1	26
Total	993	37	2	39

Fatalities, 01/01/2009-3/2/2015 : 3

Source: Fatalities: NYCDOT  
Injuries: NYS DOT  
KSI: Persons Killed or Severely Injured

Pedestrian:	2
Bicyclist:	0
Motor Vehicle Occupant:	1

Almost 1,000 injuries along the corridor from 2009-2013

11 pedestrian KSI (persons killed or severely injured)

39 total KSI along the corridor, including 3 fatalities

# Existing Conditions

- 90 foot wide roadway
- Long crossing distances for pedestrians
- Existing median is in poor condition
- High incidence of speeding
- Left turning vehicles block through traffic
- Long Island Railroad runs underneath corridor



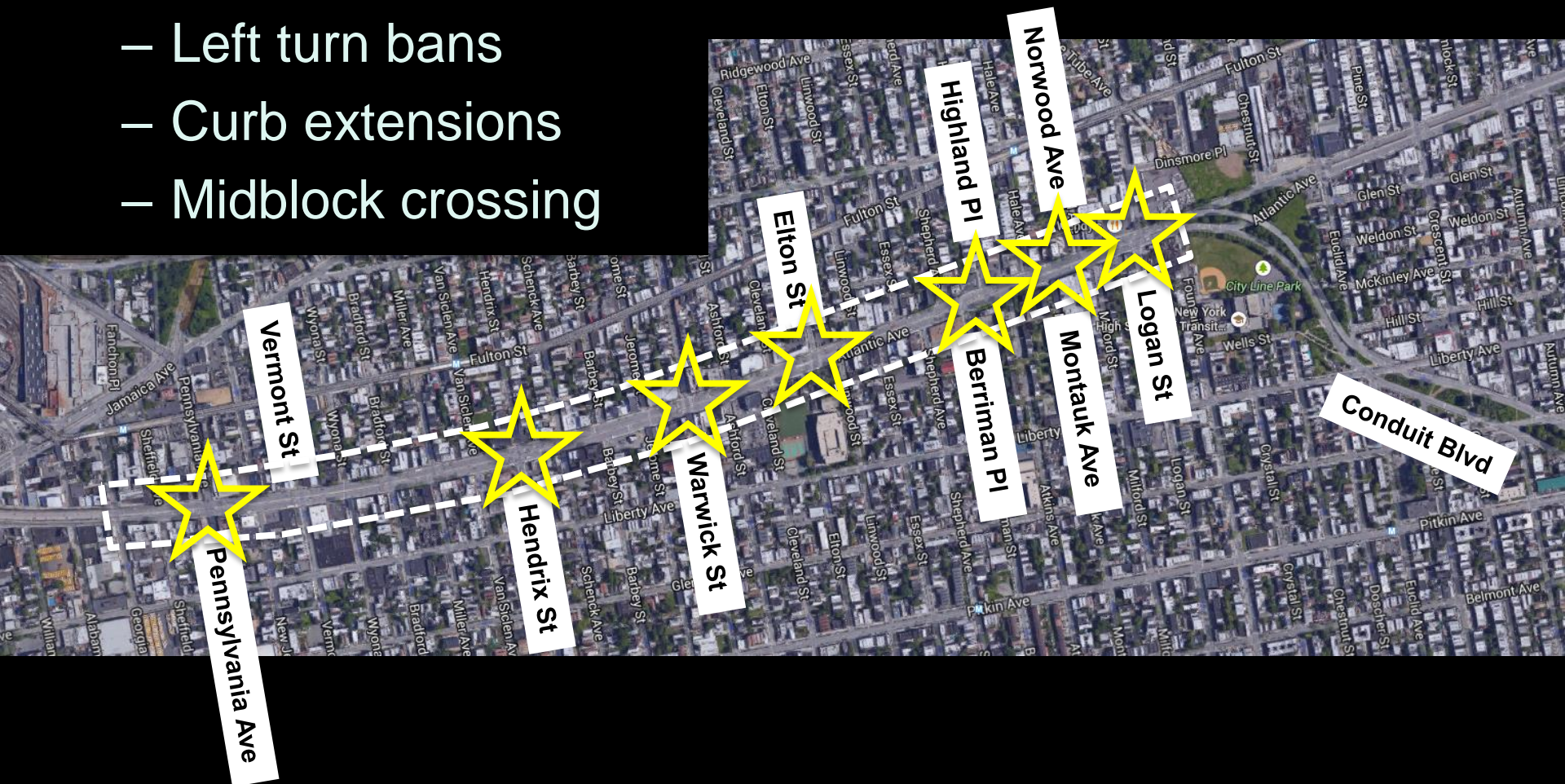
# Corridor-wide Design Elements

- Install raised, planted center median
- Create safe, accessible pedestrian refuge
- Plant street trees and additional plantings along median
- Work with LIRR to raise vents
- Install upgraded markings

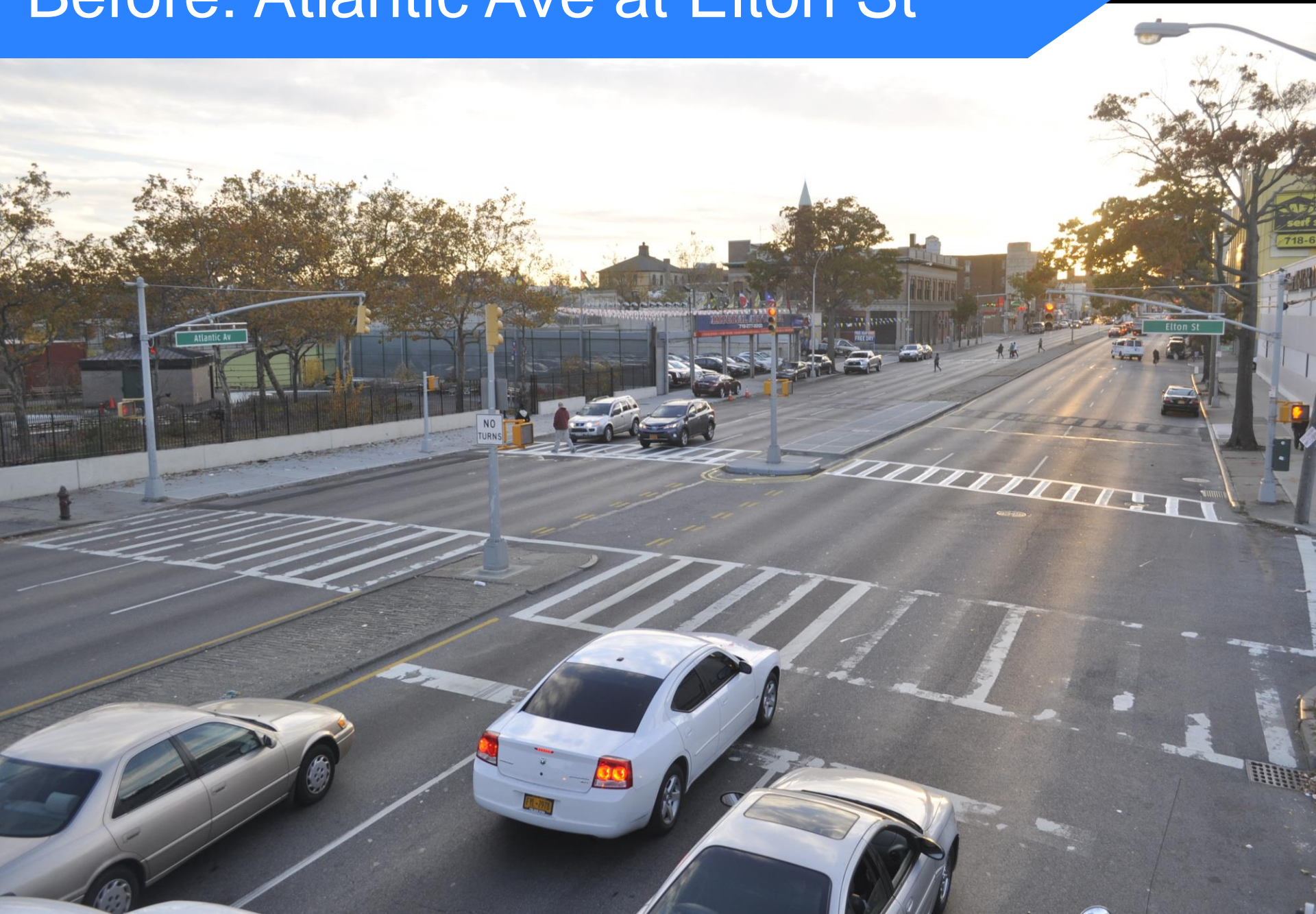


# Corridor Crash Hot Spots

- Additional safety improvements at hot spot locations, including:
  - Left turn bays
  - Left turn bans
  - Curb extensions
  - Midblock crossing



# Before: Atlantic Ave at Elton St



# Rendering: Atlantic Ave at Elton St

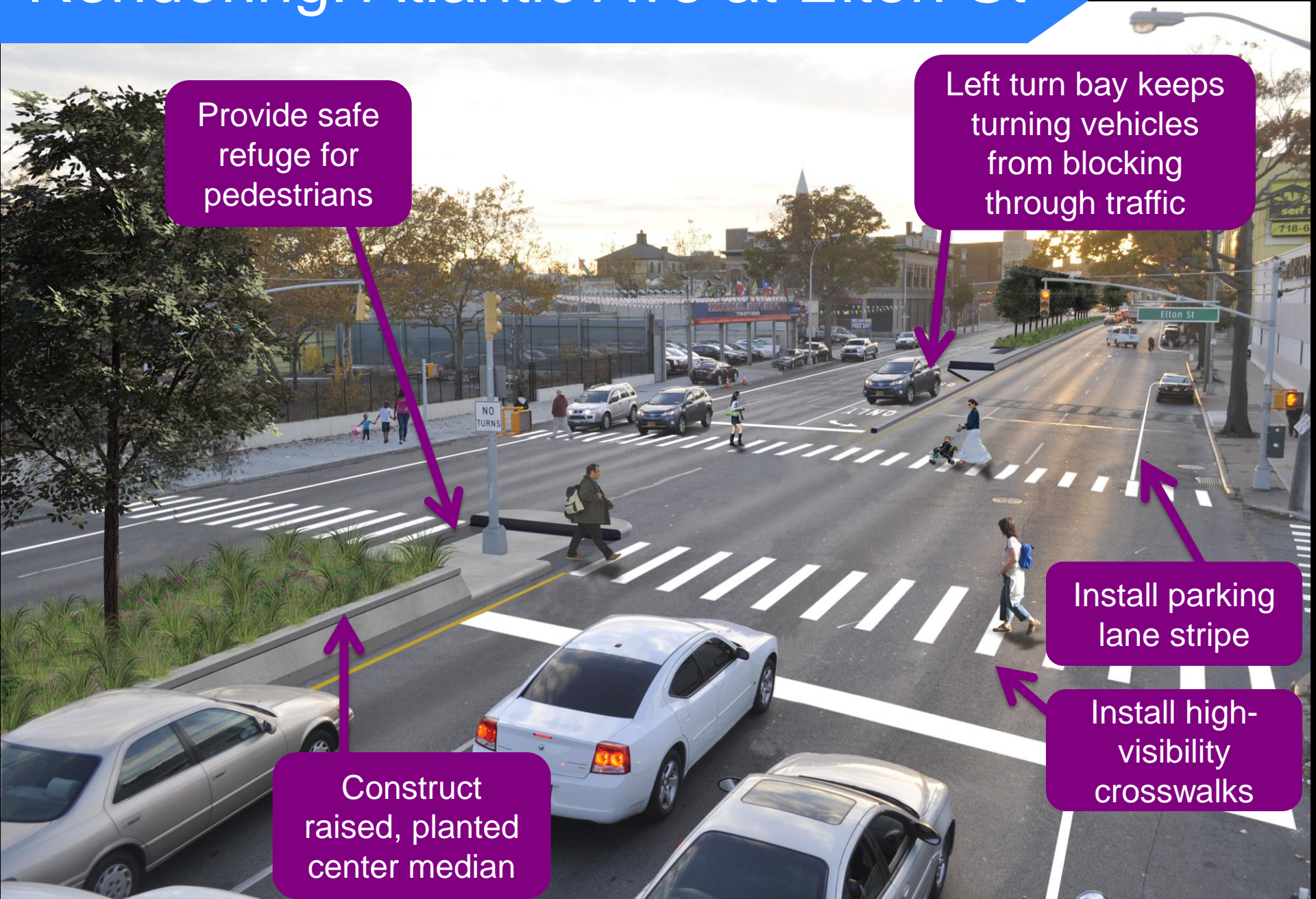
Provide safe refuge for pedestrians

Left turn bay keeps turning vehicles from blocking through traffic

Install parking lane stripe

Install high-visibility crosswalks

Construct raised, planted center median





# Benefits of Proposal

- Raised, planted center median
  - Provides safer and accessible pedestrian refuge
  - Calms traffic / reduces speeding
  - Discourages dangerous midblock crossings
- Left turn bays
  - Organize traffic and minimize vehicle weaving and back pressure
  - Keep through traffic moving
- Left turn bans
  - Streamline intersection operations
  - Reduce pedestrian-vehicle conflicts
- Midblock crossing
  - Accommodates pedestrian desire line where there is a long distance between crossings
- Curb extensions
  - Shorten crossing distances and slow turning vehicles
- Markings Upgrades
  - Parking lane stripe calms traffic
  - High visibility crosswalks magnify pedestrians

# DDC HWK-10105 Capital Timeline

## Limits:

- Atlantic Ave: Georgia Ave to Conduit Blvd

## Current Status:

- DDC working on design with DOT

## Design Phase Goals:

- August 2016: Complete design
- Spring 2017: Construction scheduled to begin

## Next Phase:

- Phase II: Conduit Blvd to Rockaway Blvd



Questions?

Thank  
You