

# Linden Blvd: Kings Hwy to Ave D

## Corridor Safety Project

2015



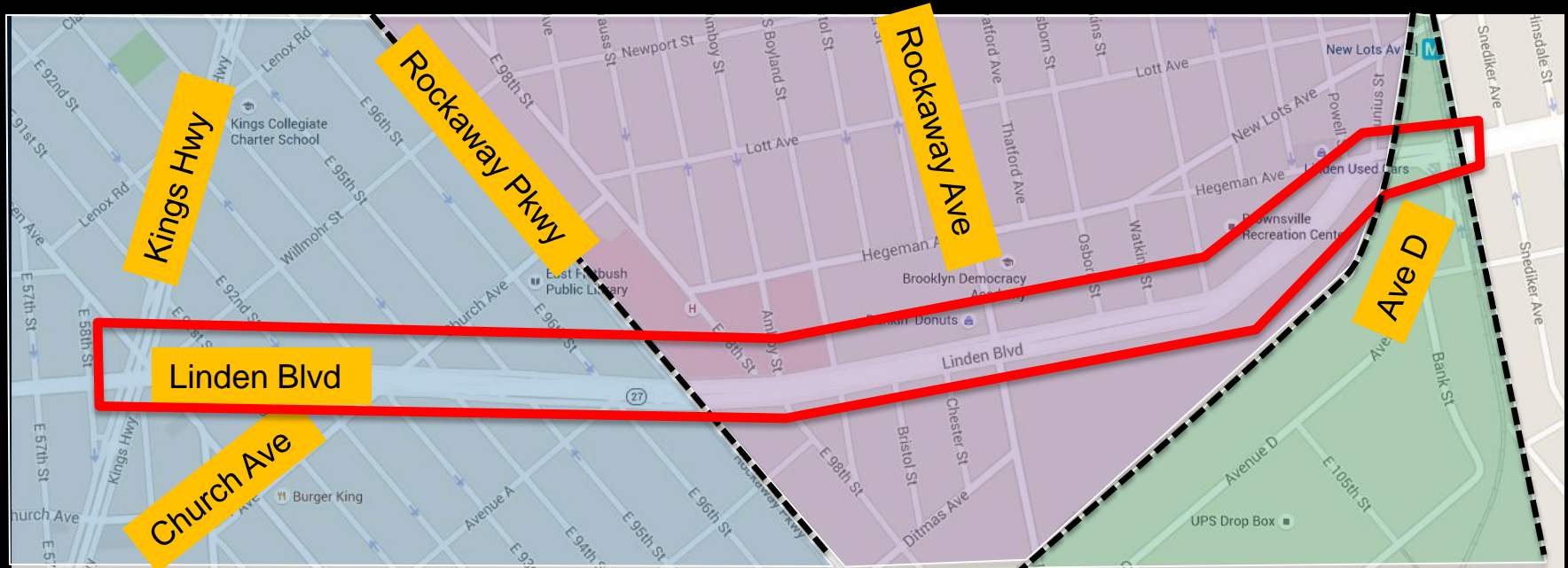
# Project Location

- Phase I of Linden Blvd (Kings Hwy to 78 St)
- Major east/west corridor in Eastern Brooklyn
- Residential, light industrial land use
- Heavy vehicle volumes at rush hours
- B8 Bus, Local truck route

CB 17

CB 16

CB 18

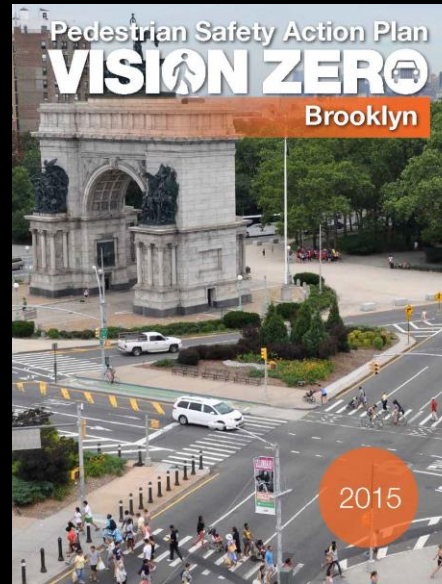




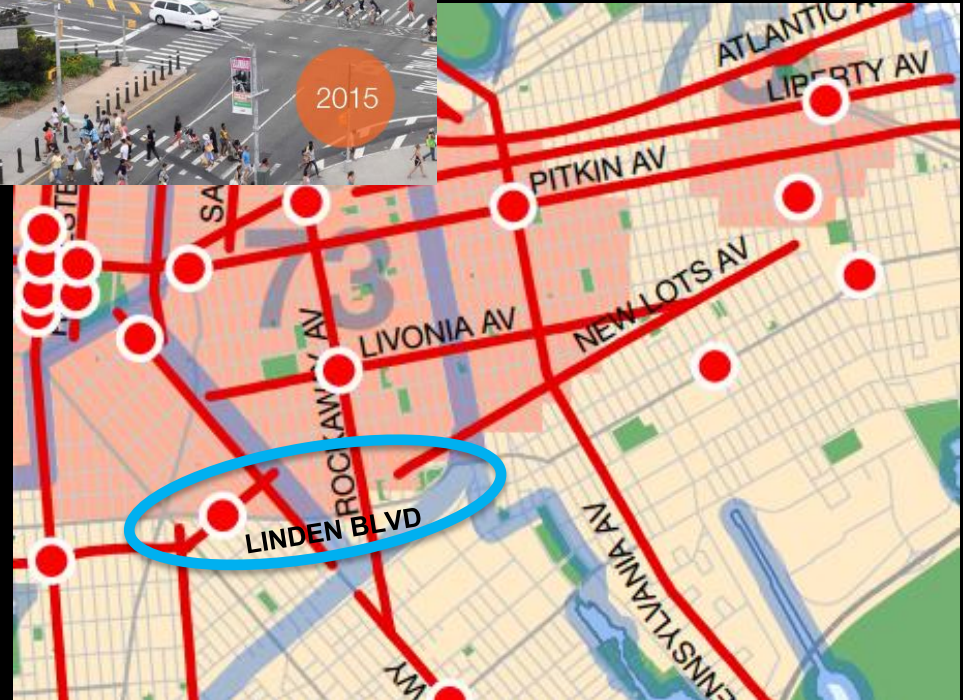
# Vision Zero Priority Corridors

## Vision Zero

- Multi-agency effort to reduce traffic fatalities in NYC
- Borough Action Plans released in 2015
- Priority Intersections, Corridors, and Areas identified for each borough
  - **Church Ave & Linden Blvd** identified as a Priority Intersection for Brooklyn



Brooklyn Priority Map



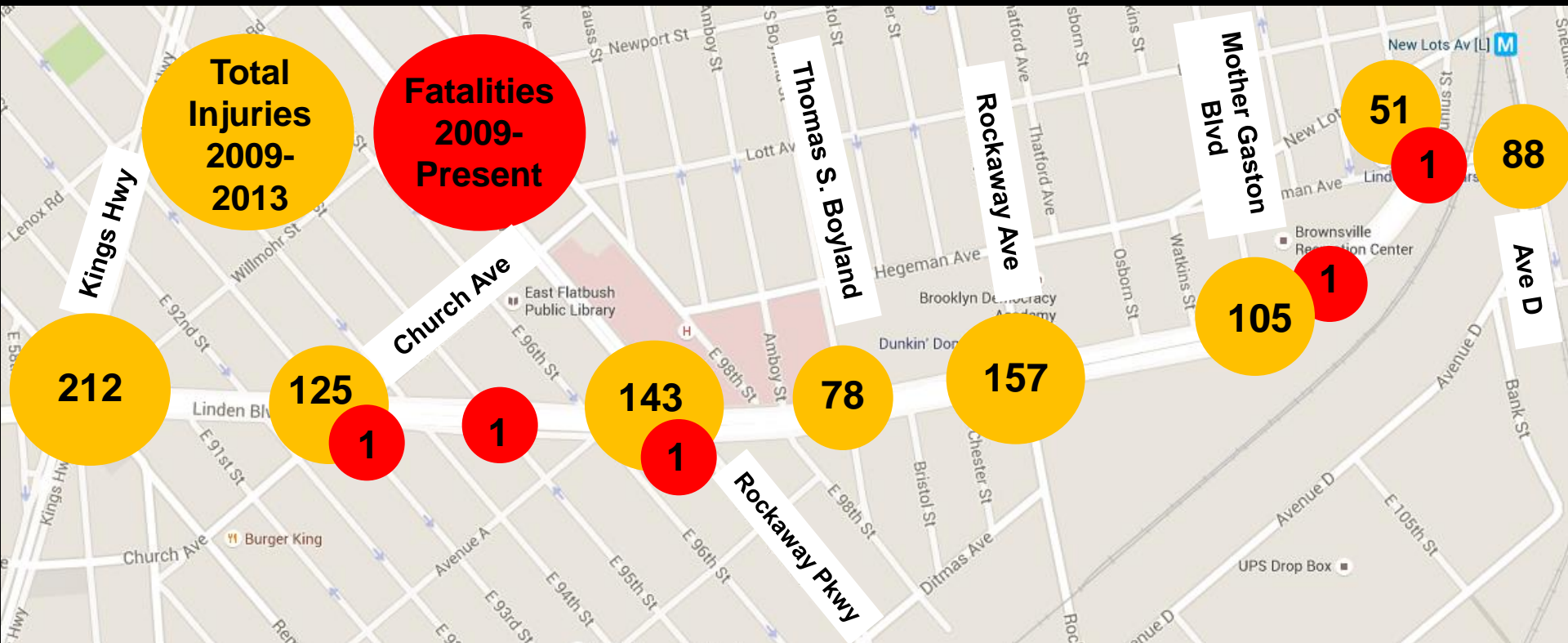
# Safety Data: Project Need

- 58 KSI (persons killed or severely injured)
- 1178 total injury crashes
- 5 Fatalities since 2009

## Linden Blvd - Kings Hwy to Ave D, BK

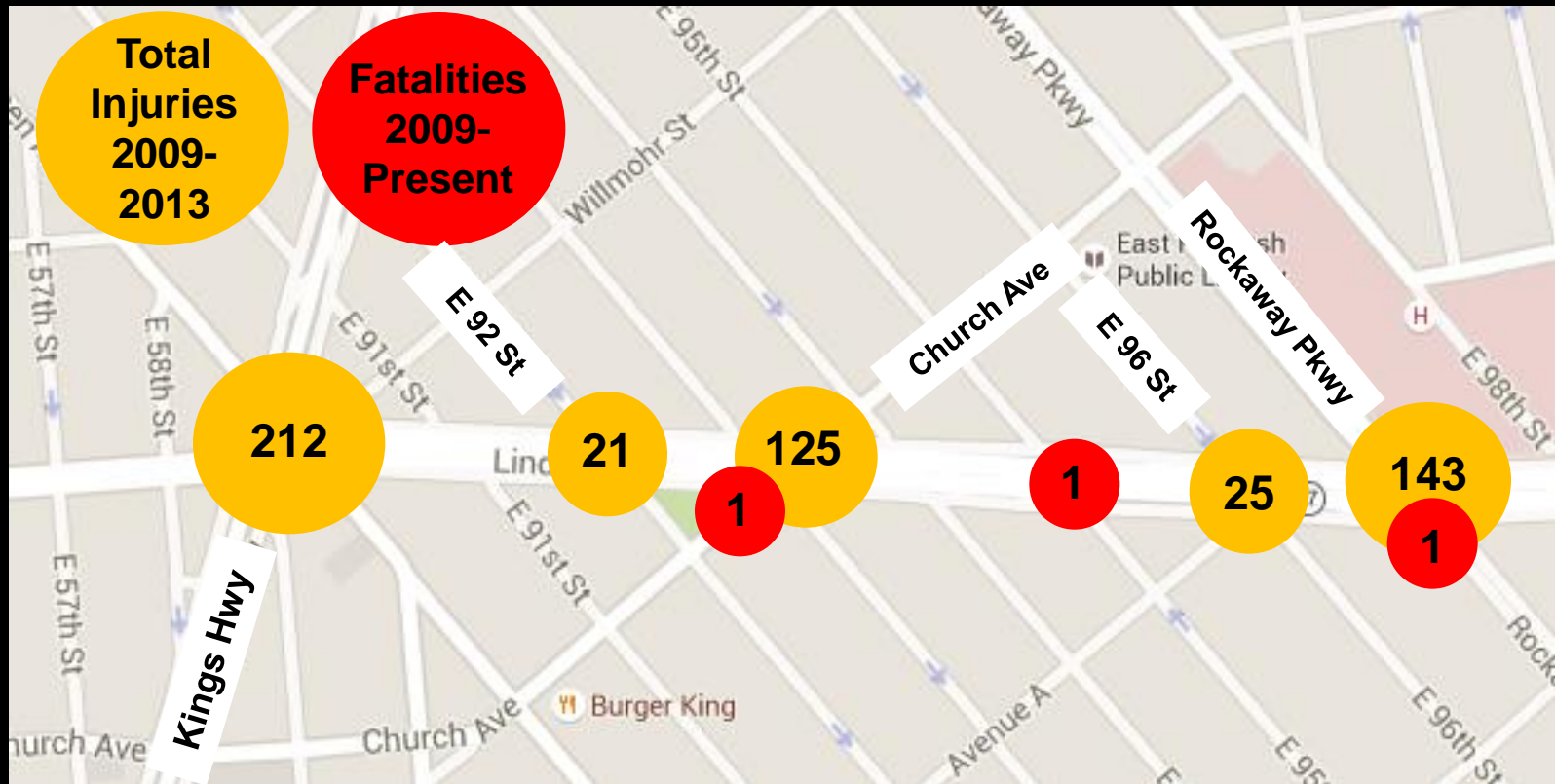
### Injury Summary, 2009-2013 (5 Years)

	Total Injuries	Severe Injuries	Fatalities	KSI
Pedestrian	59	9	3	12
Bicyclist	19	2	0	2
Motor Vehicle Occupant	1100	43	1	44
Total	1178	54	4	58



# Safety Data: Project Need

- In CB 17, Kings Hwy, E. 92 St, Church Ave, E. 96 St, and Rockaway Pkwy have the highest crashes





# Outreach- Community Workshops

- Workshops held in February 2015 to get feedback from community on top issues with Linden Blvd



Linden Blvd Safety Workshop  
February 12<sup>th</sup>, 2015  
Brownsville Recreation Center



**LINDEN BOULEVARD  
(KINGS HIGHWAY TO 78TH STREET)  
SAFETY WORKSHOPS**

**SUBJECT:** Join the New York City Department of Transportation (DOT) to discuss traffic safety on Linden Boulevard between Kings Highway and 78th Street at two public workshops in Brownsville and East New York.  
(Light refreshments available)

DATE:	TIME:	LOCATION:
Thursday, February 5, 2015	6:30 - 8:30 p.m.	United Community Centers 613 New Lots Avenue, Brooklyn, NY 11207
Thursday, February 12, 2015	6:30 - 8:30 p.m.	Brownsville Recreation Center 1555 Linden Boulevard, Brooklyn, NY 11212

**Contact:** DOT Brooklyn Borough Commissioner's Office at (718) 222-7259

**Workshop Goals:**

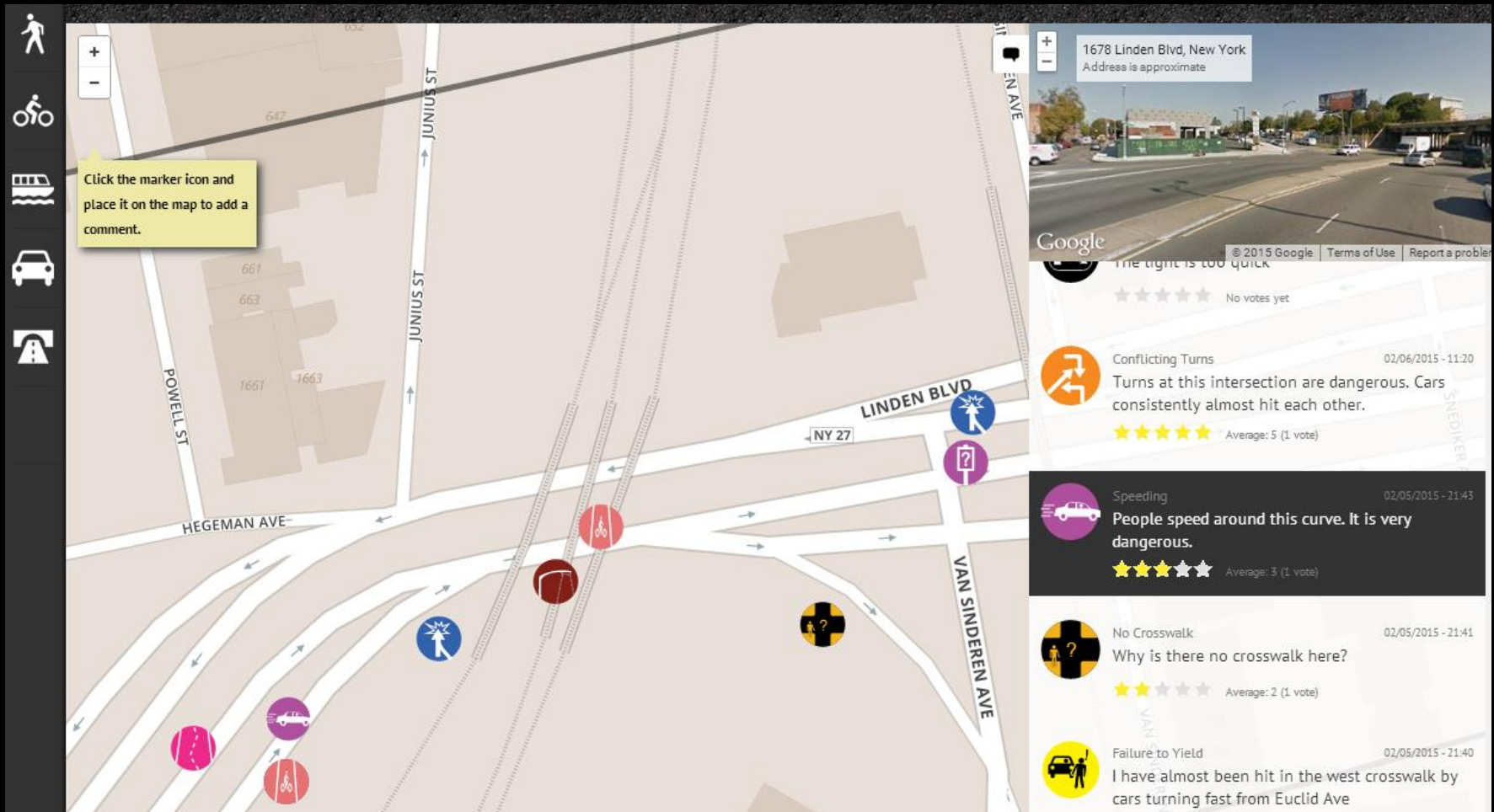
- Identify street safety concerns
- Gather community input
- Discuss street design solutions
- Brainstorm ways to enhance safety on Linden Boulevard

Habrá un intérprete disponible en la reunión.

# Outreach- Interactive Website

- Interactive website allowed community members to submit their top issues to DOT

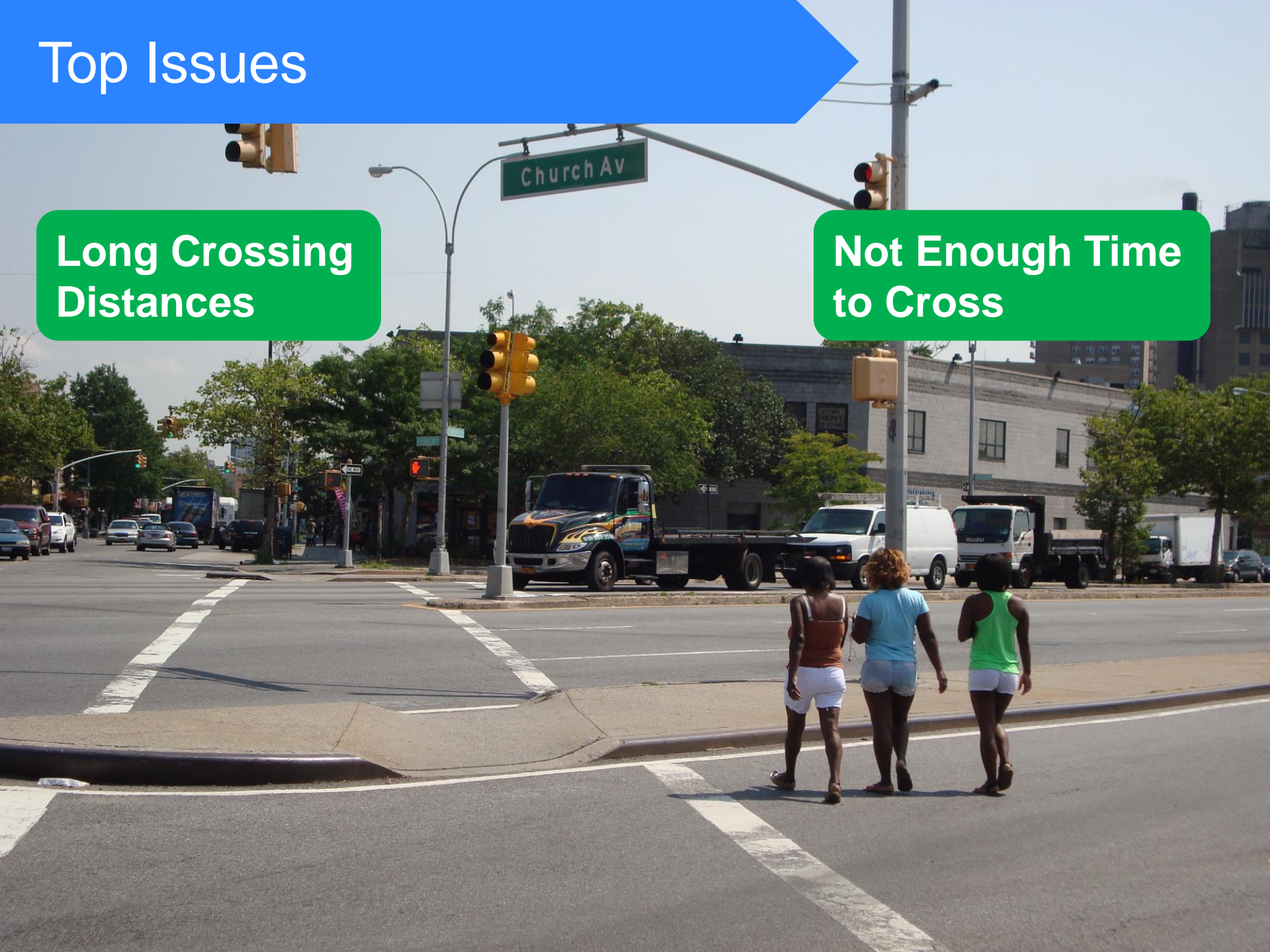




# Top Issues

**Long Crossing  
Distances**

**Not Enough Time  
to Cross**





# Top Issues

## Not Enough Space to Wait





# Top Issues



**Lack of left turn arrows  
at select intersections**



# Top Issues

**Long Distance  
Between Crosswalks**





# Top Issues



**Speeding**

**Failure to Yield**



# Top Issues



**Lack Of Markings on  
Service Roads**

**Lack of Clear  
Markings at Slips**



# Top Issues

## Narrow Median Bus Stops



## Poor Median Condition



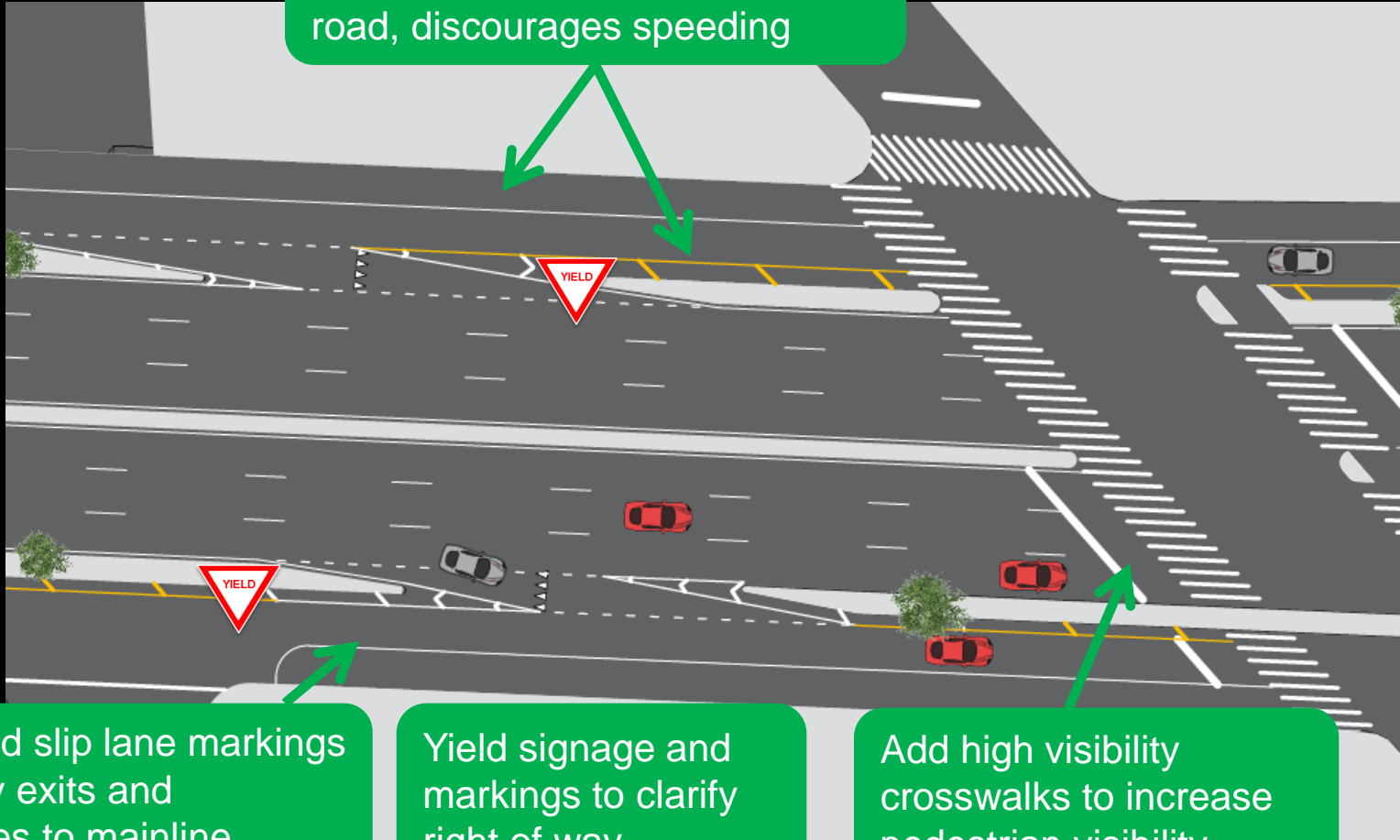
# Proposal Details: Speed Limit and Signal Timing

- Reduce speed limit to 30 MPH
- Add protected left turn phases
  - Amboy / E 98<sup>th</sup> St
  - Thomas Boyland St
  - Ave D / Van Sinderen Ave
- Give pedestrians more time to cross locations where current time is inadequate



# Proposed: Markings & Signage

Parking lane and median channelization narrows service road, discourages speeding



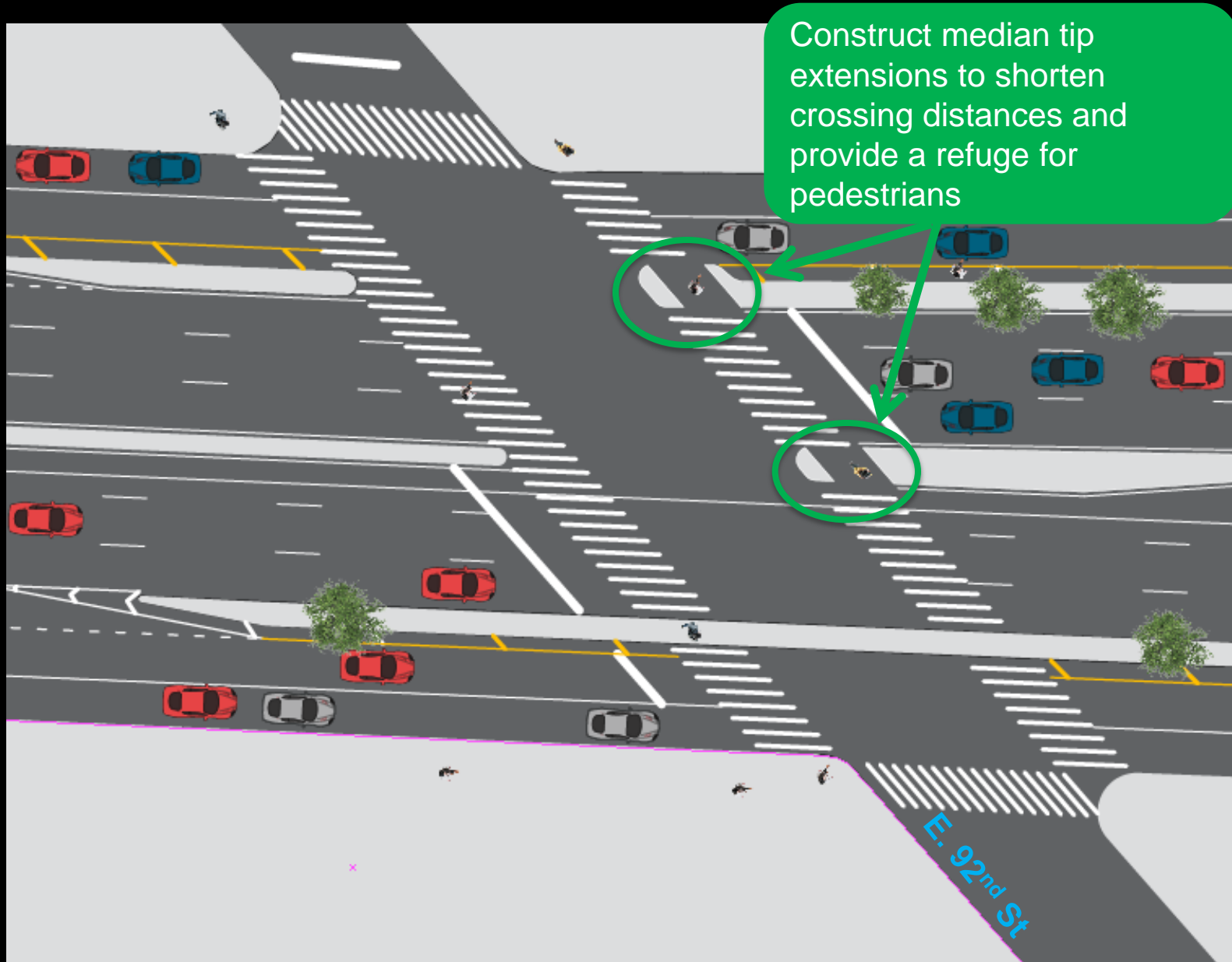
Improved slip lane markings to clarify exits and entrances to mainline

Yield signage and markings to clarify right of way

Add high visibility crosswalks to increase pedestrian visibility



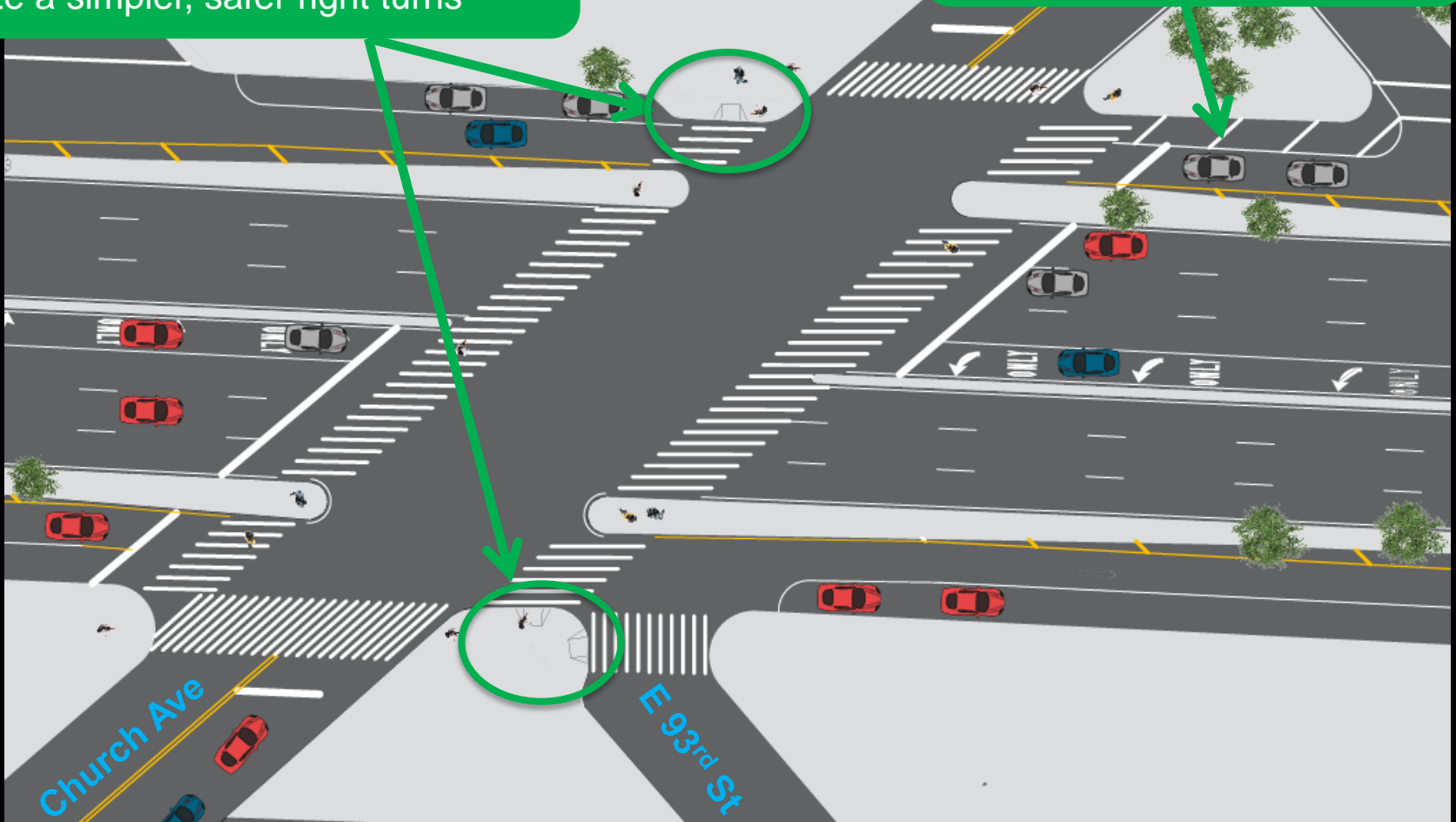
# Proposal Details: E 92<sup>nd</sup> St



# Proposal Details: Church Ave

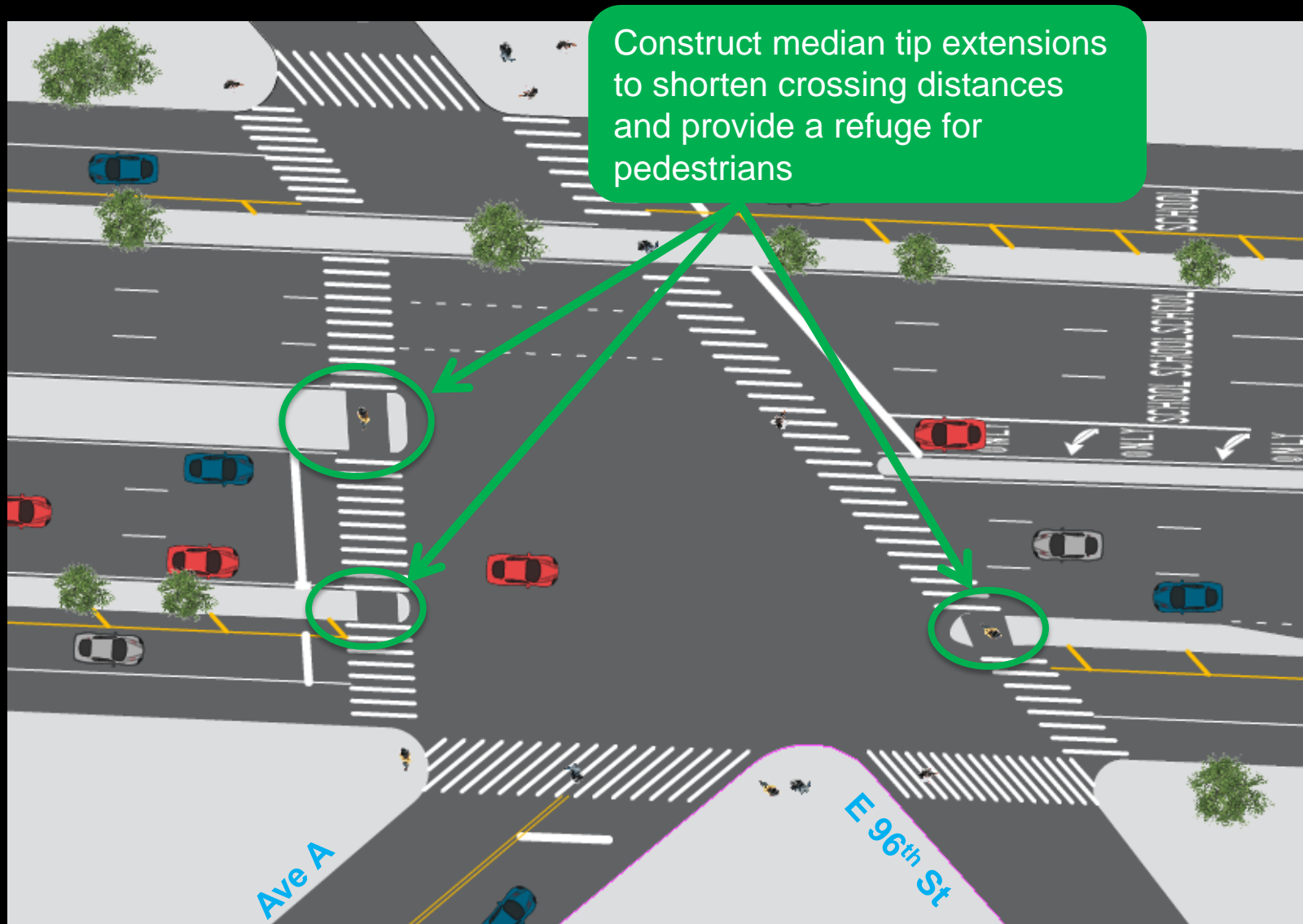
Construct new curb extensions to shorten crossing distances and to create a simpler, safer right turns

Improved markings tighten service road visually and discourage speeding



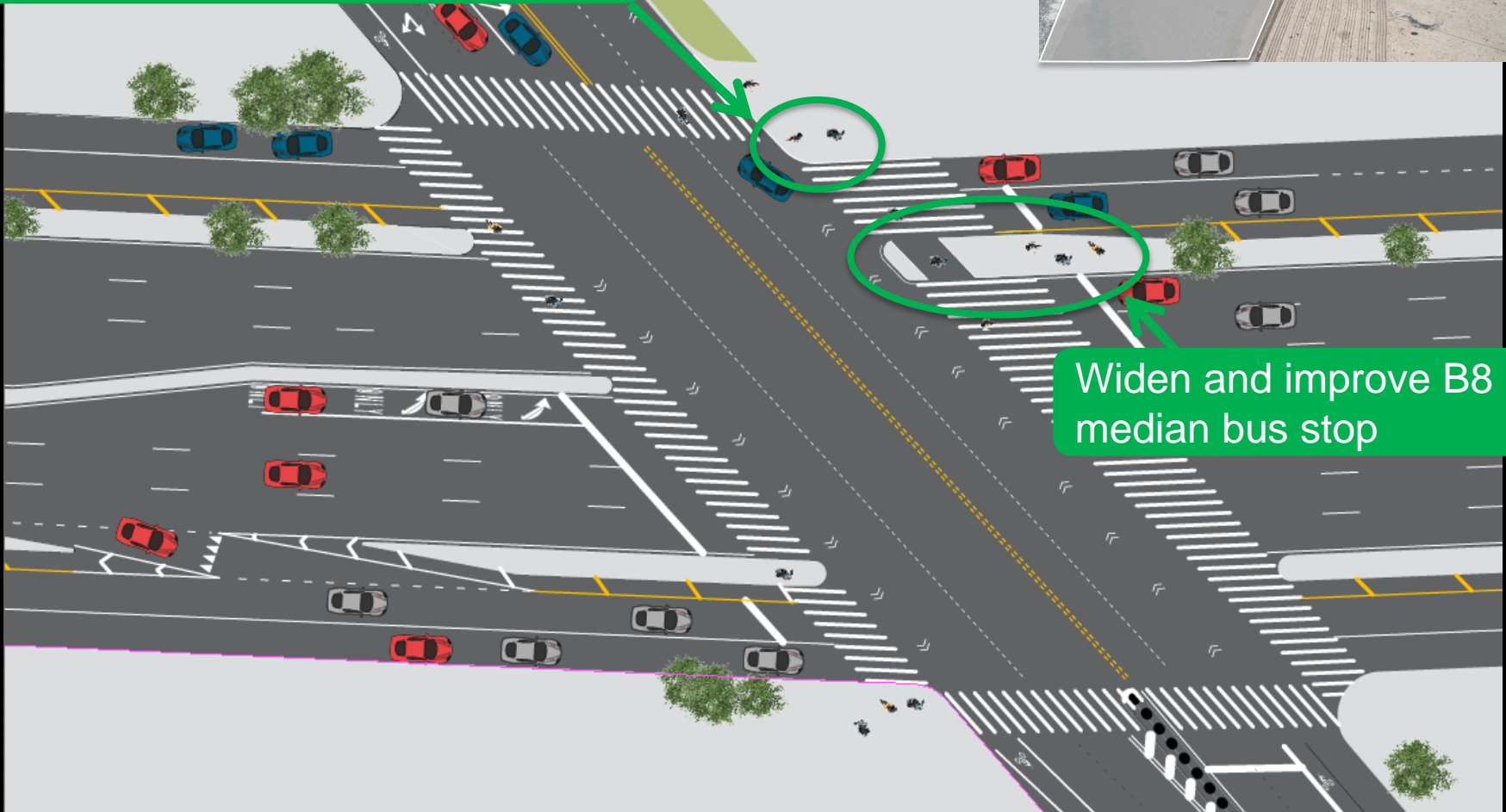


# Proposal Details: E 96<sup>th</sup> St



# Proposal Details: Rockaway Pkwy

Construct new curb extensions to shorten crossing distances and to create a simpler, safer right turns



Widen and improve B8 median bus stop



# Project Benefits

- Median extensions allow for shorter, safer pedestrian crossings
- Curb extensions allow for simpler, safer right turns
- Markings upgrades discourage speeding and better define roadway space
- Improved B8 bus stops provide safe space to wait



Existing: Linden Blvd at Rockaway Pkwy



Proposed: Median Tip Extension at Queens Blvd & 69<sup>th</sup> St



Questions?



Thank  
You

Contact: DOT Brooklyn Borough Office at (646) 892-1350