

Cross Bay Bridge Safety Improvements



Background

**Request for Signal at
Bridge Entrance**

**Jamaica Bay
Greenway Workshops**



Existing Condition: Beach Channel Dr @ Beach 94th St

Cross Bay Bridge Connector Transportation Issues

#1 Missing waterfront crossing/difficult merge

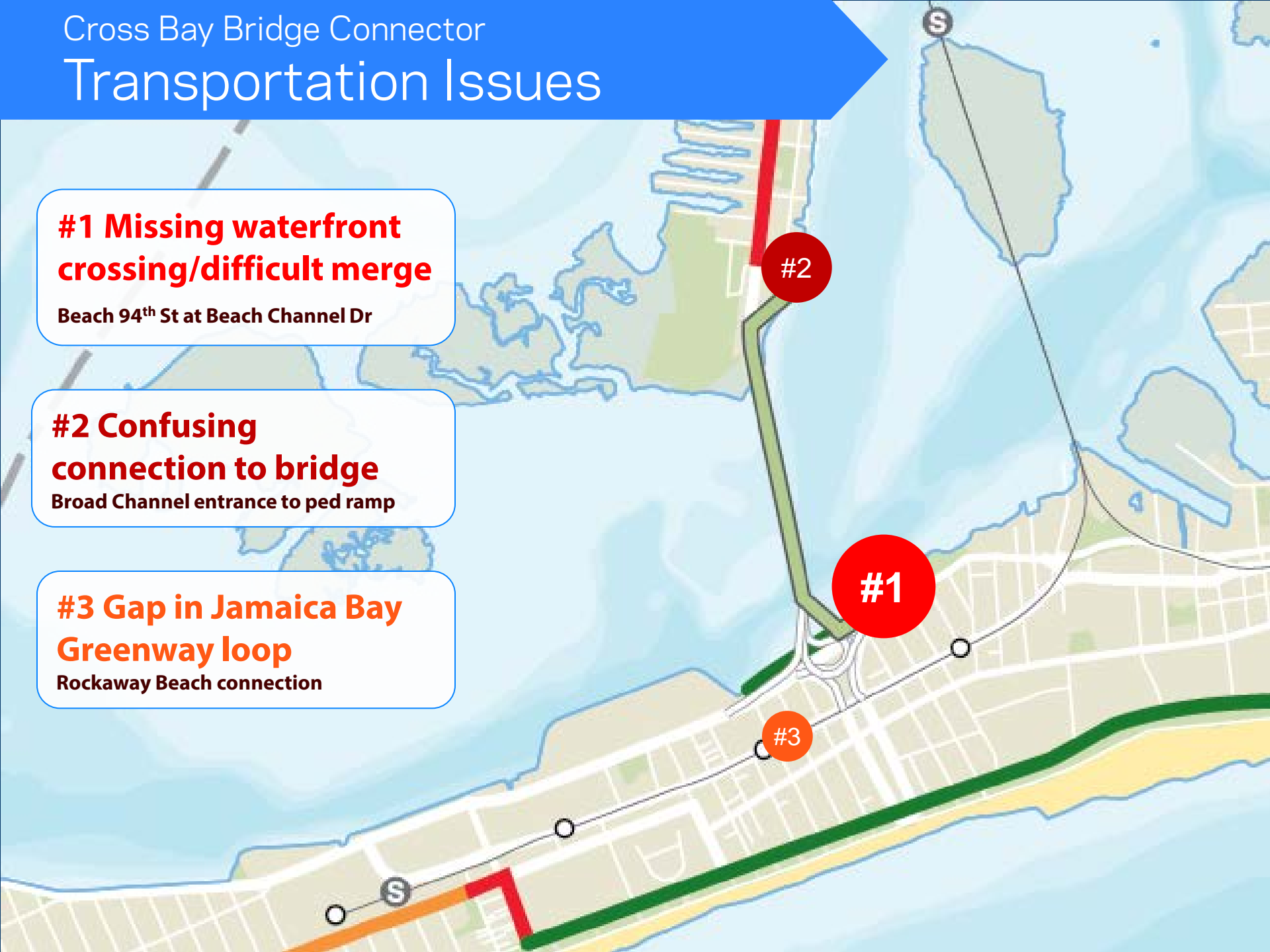
Beach 94th St at Beach Channel Dr

#2 Confusing connection to bridge

Broad Channel entrance to ped ramp

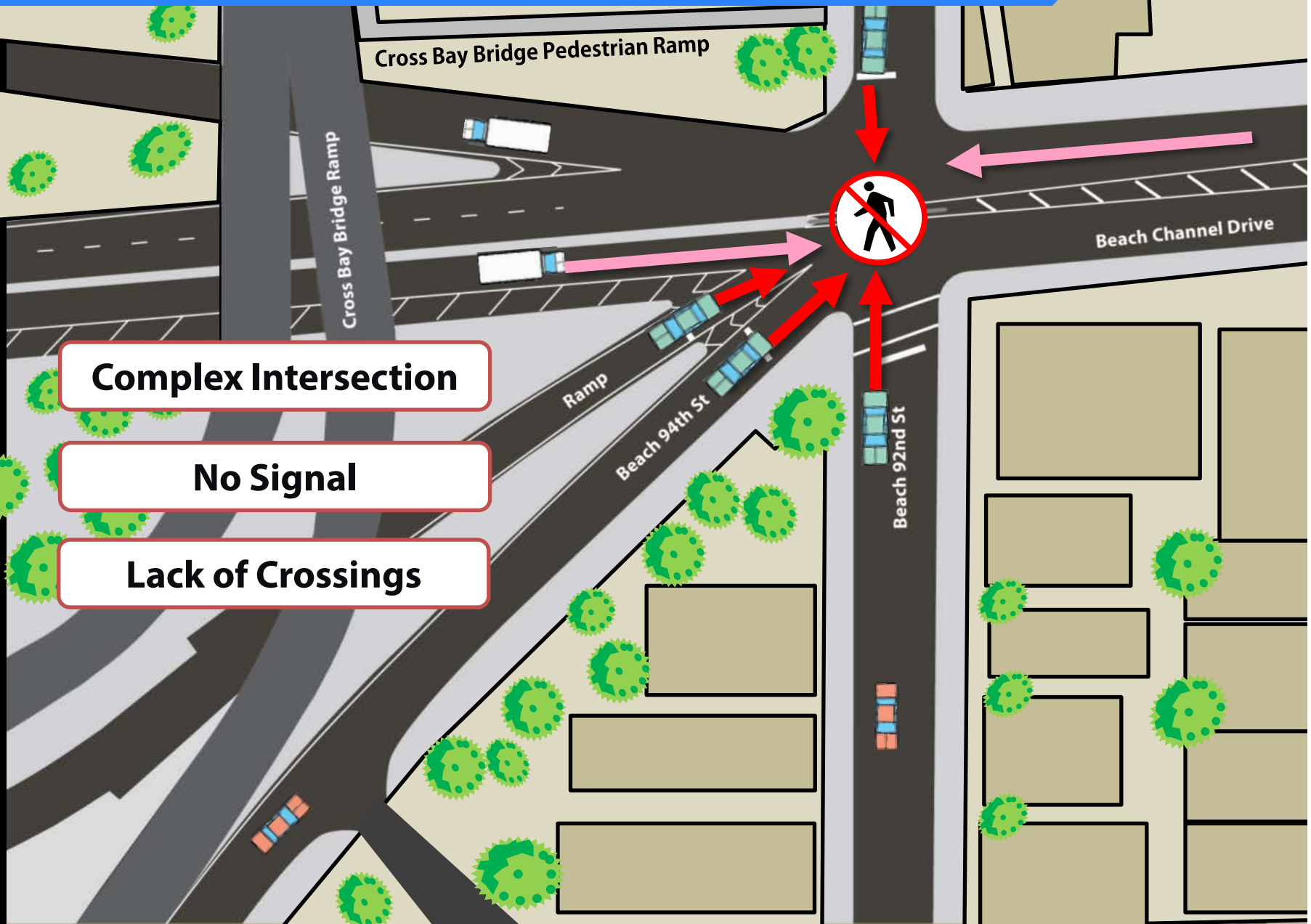
#3 Gap in Jamaica Bay Greenway loop

Rockaway Beach connection



Issue #1

Missing Waterfront Crossing/Difficult Merge



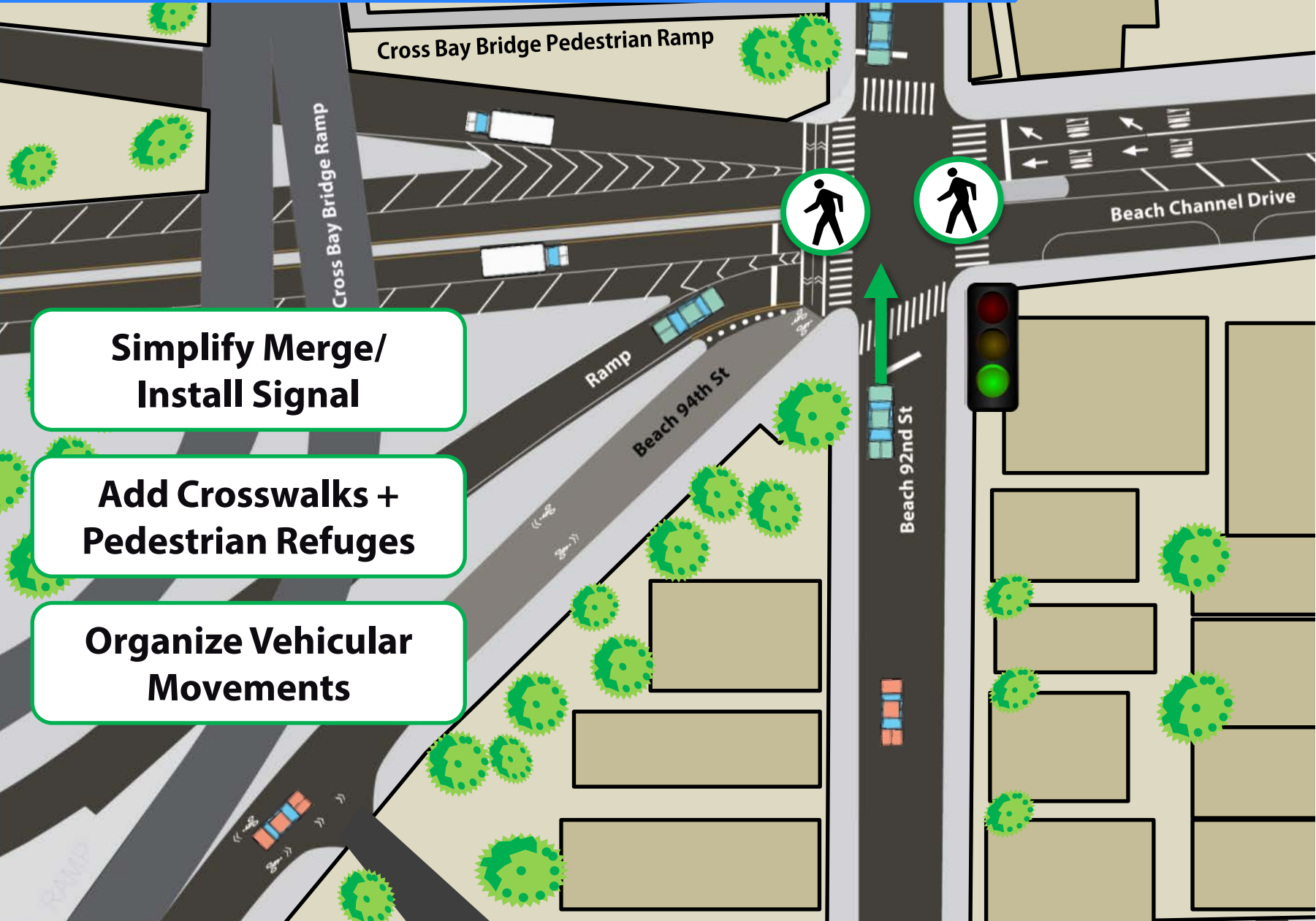
Complex Intersection

No Signal

Lack of Crossings

Solution #1

Reconfigure Traffic to Install Signal



**Simplify Merge/
Install Signal**

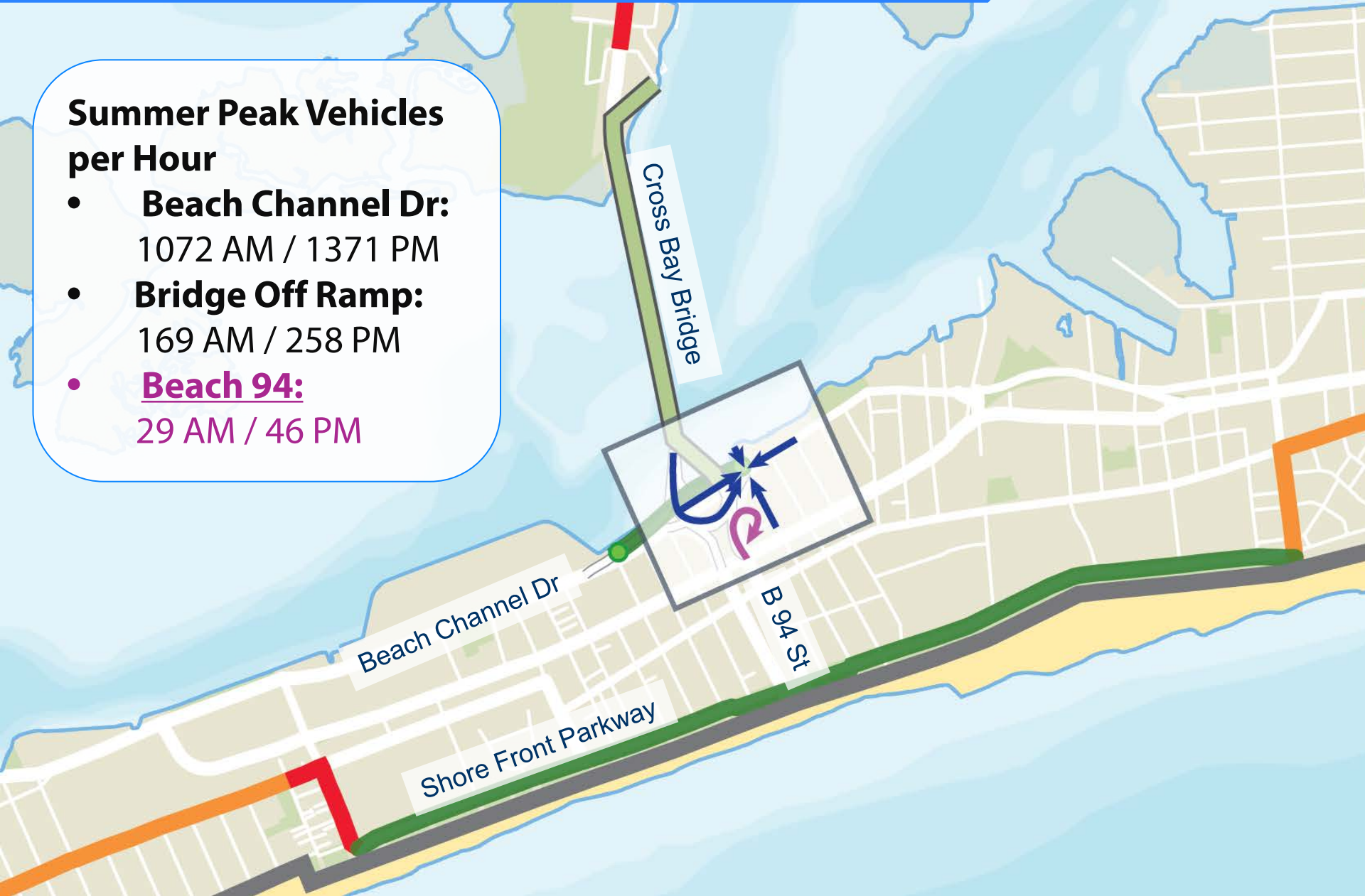
**Add Crosswalks +
Pedestrian Refuges**

**Organize Vehicular
Movements**

Reconfigure Traffic to Install Signal

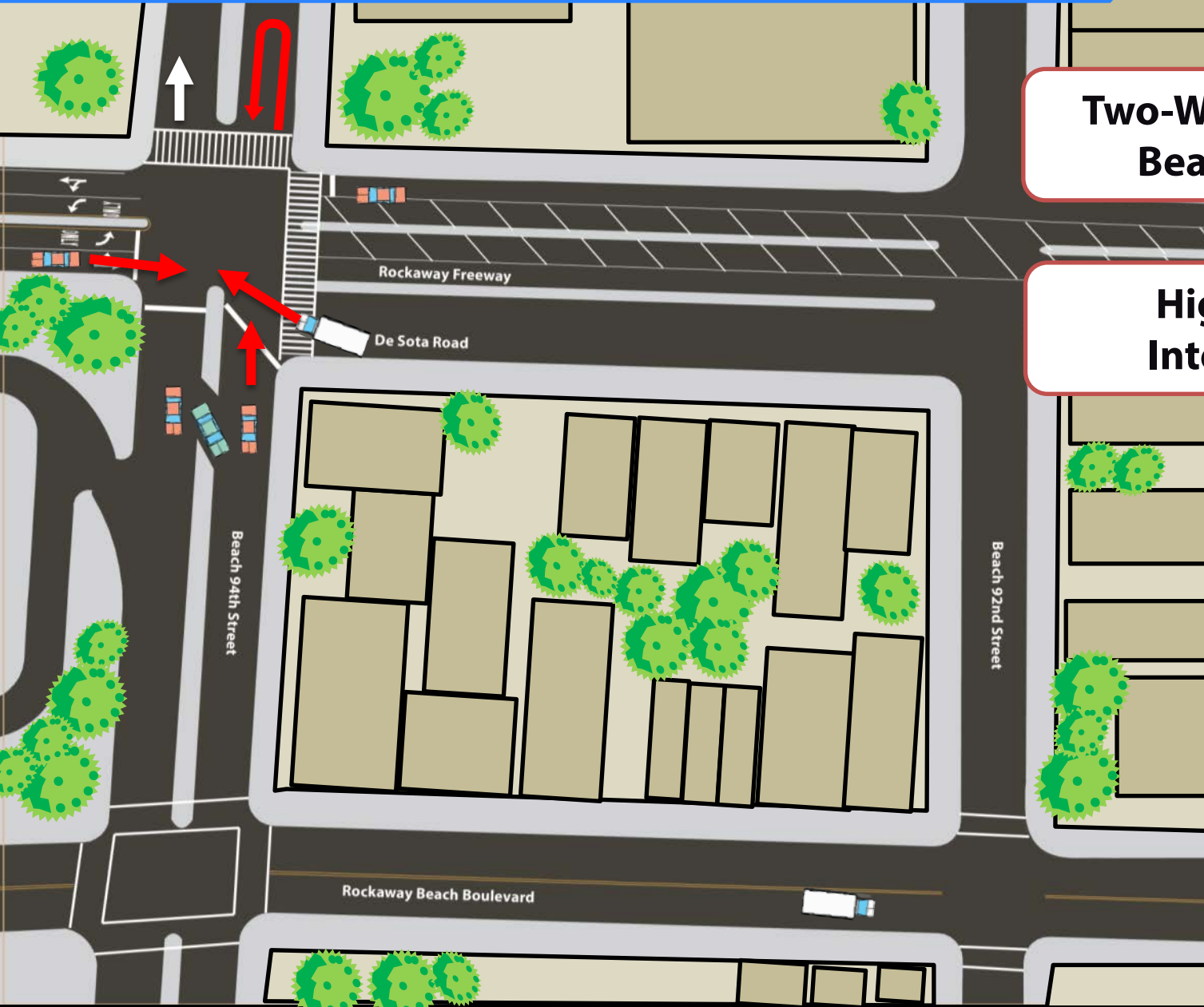
Summer Peak Vehicles per Hour

- **Beach Channel Dr:**
1072 AM / 1371 PM
- **Bridge Off Ramp:**
169 AM / 258 PM
- **Beach 94:**
29 AM / 46 PM



Solution #1

Reconfigure Traffic to Install Signal



**Two-Way Traffic on
Beach 94th St**

**High-Crash
Intersection**

Solution #1

Reconfigure Traffic to Install Signal



**Actuated Signal for SB
Beach 94th St**

**Eliminates Service
Road Turn Conflicts**

Add Crosswalks

Confusing Connection To Bridge



Bike/Ped
Bridge
Path Starts

Bike
Lane
Ends

Existing Condition: Cross Bay Blvd at E 21 Rd

Issue #2

Confusing Connection To Bridge



Solution #2

Create Broad Channel Gateway



Solution #2

Create Broad Channel Gateway



Gap in Jamaica Bay Greenway Loop

**No north-south
bicycle route to
Shore Front Pkwy/
Rockaway Beach**



Existing Condition: Shore Front Pkwy at Beach 94th St, facing west

Gap in Jamaica Bay Greenway Loop

18-Mile Loop

Missing
Connection
(0.3 miles)



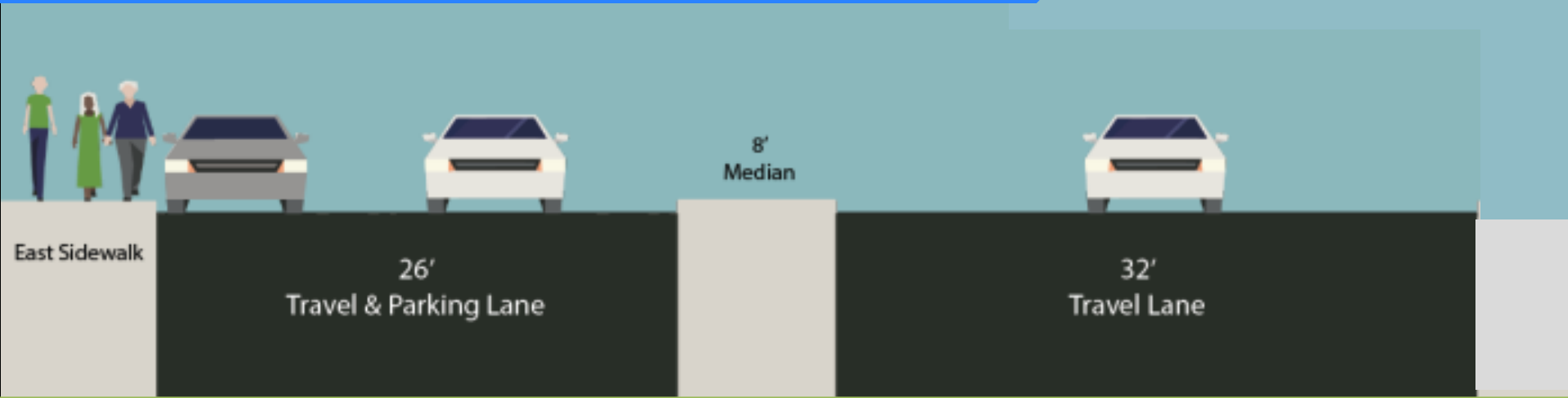
Gap in Jamaica Bay Greenway Loop

Beach 94th St designed as important entrance to Rockaway Beach



Solution #3

Create Bay to Beach Connection



Beach 94th St @ Rockaway Fwy, facing beach



66'

Safe, low-stress path

+/- 50 spaces

Add turn lane

Solution #3

Create Bay to Beach Connection

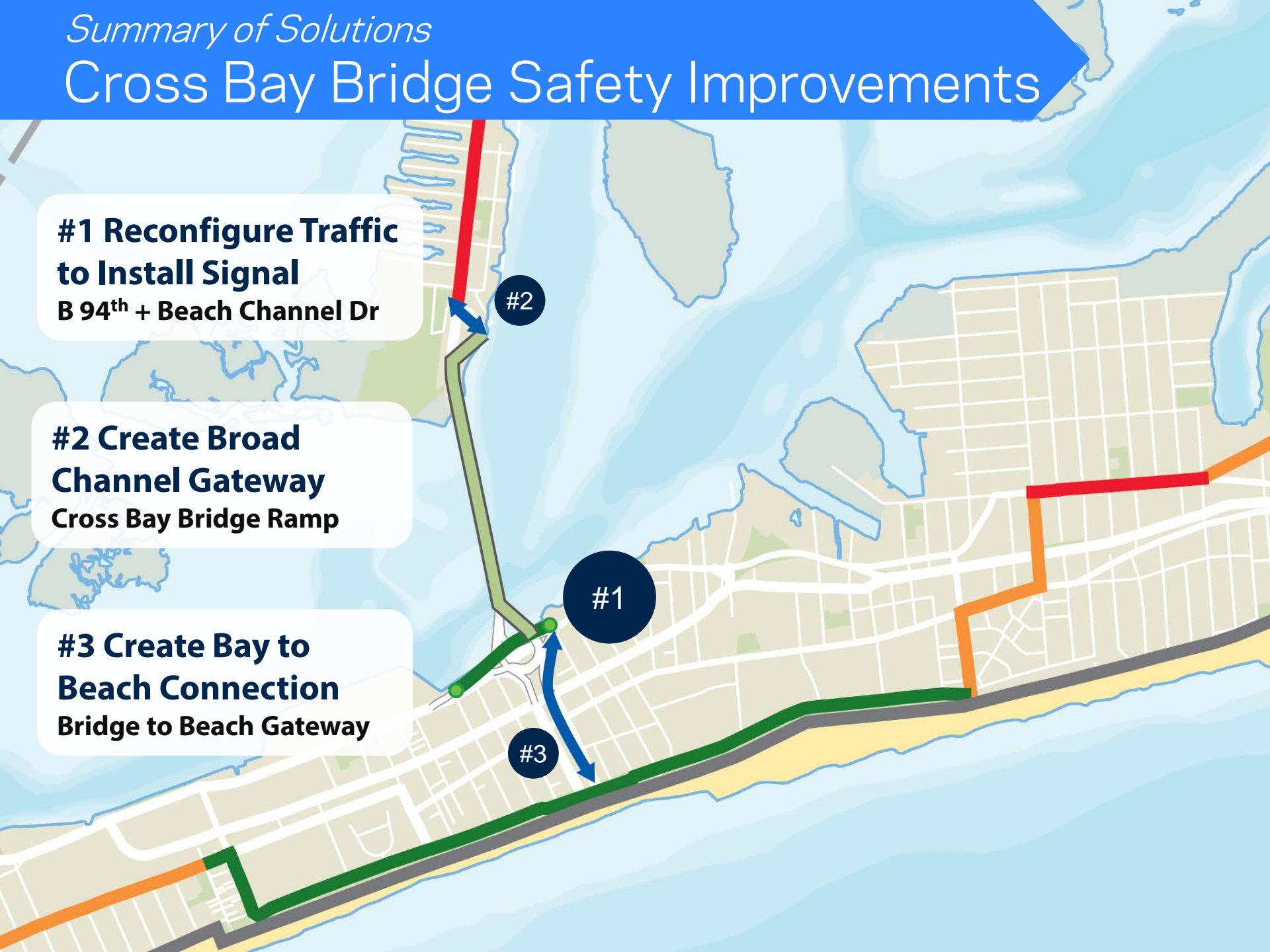


Cross Bay Bridge Safety Improvements

#1 Reconfigure Traffic to Install Signal
B 94th + Beach Channel Dr

#2 Create Broad Channel Gateway
Cross Bay Bridge Ramp

#3 Create Bay to Beach Connection
Bridge to Beach Gateway



Cross Bay Bridge Connector

Thank
You!

*Alice Friedman, Project Manager
DOT—Greenways
jamaicabaygreenway@dot.nyc.gov
(212) 839-7242*