

PUTNAM PLAZA REDESIGN

COMMUNITY MEETING #2
DECEMBER 3, 2014

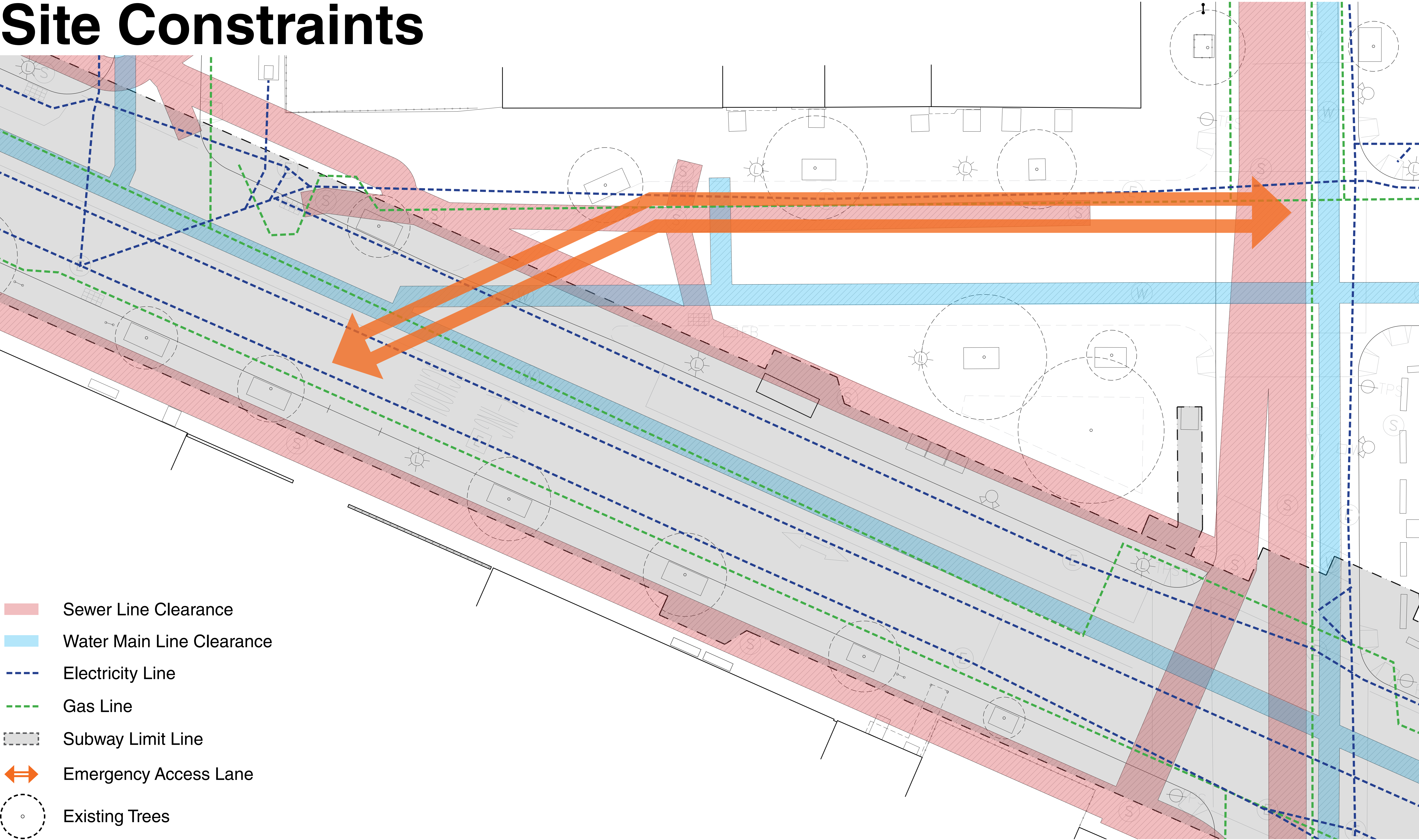


Most Desired Elements

- Well shaded area
- Plantings as buffer from traffic but allow views into plaza
- Smooth and easily walkable paving
- Space for green market
- Future concession kiosk (9'x12')
- Open paved flexible space
- Permanent seating/permanent table
- Movable tables and chairs
- Emergency access to storefronts
- Bike racks
- Drinking fountain
- Trash/recycling bins



Site Constraints



Site Plan - Option 1



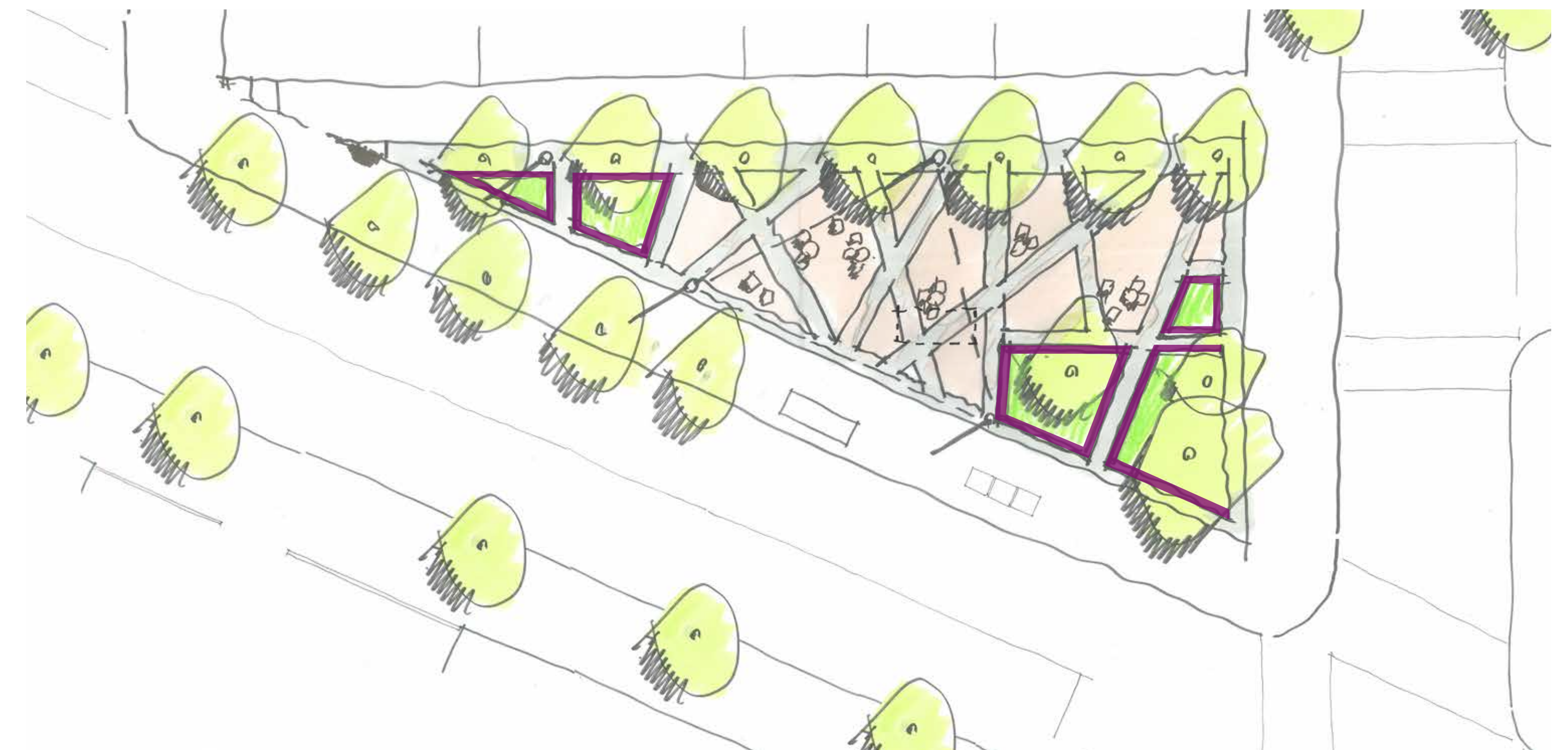
- | | |
|----------------------------|-----------------------------|
| 1 Standard DOT Sidewalk | 6 Colored Concrete |
| 2 Fixed Seating with Backs | 7 Light Poles/Shade Support |
| 3 Planter | 8 Signage |
| 4 Movable Tables & Chairs | 9 Bus Stop |
| 5 Future Kiosk | |

Option 1



VENDOR SPACE
-FARMERS MARKET
-ARTS & CRAFTS
-FLEA MARKETS

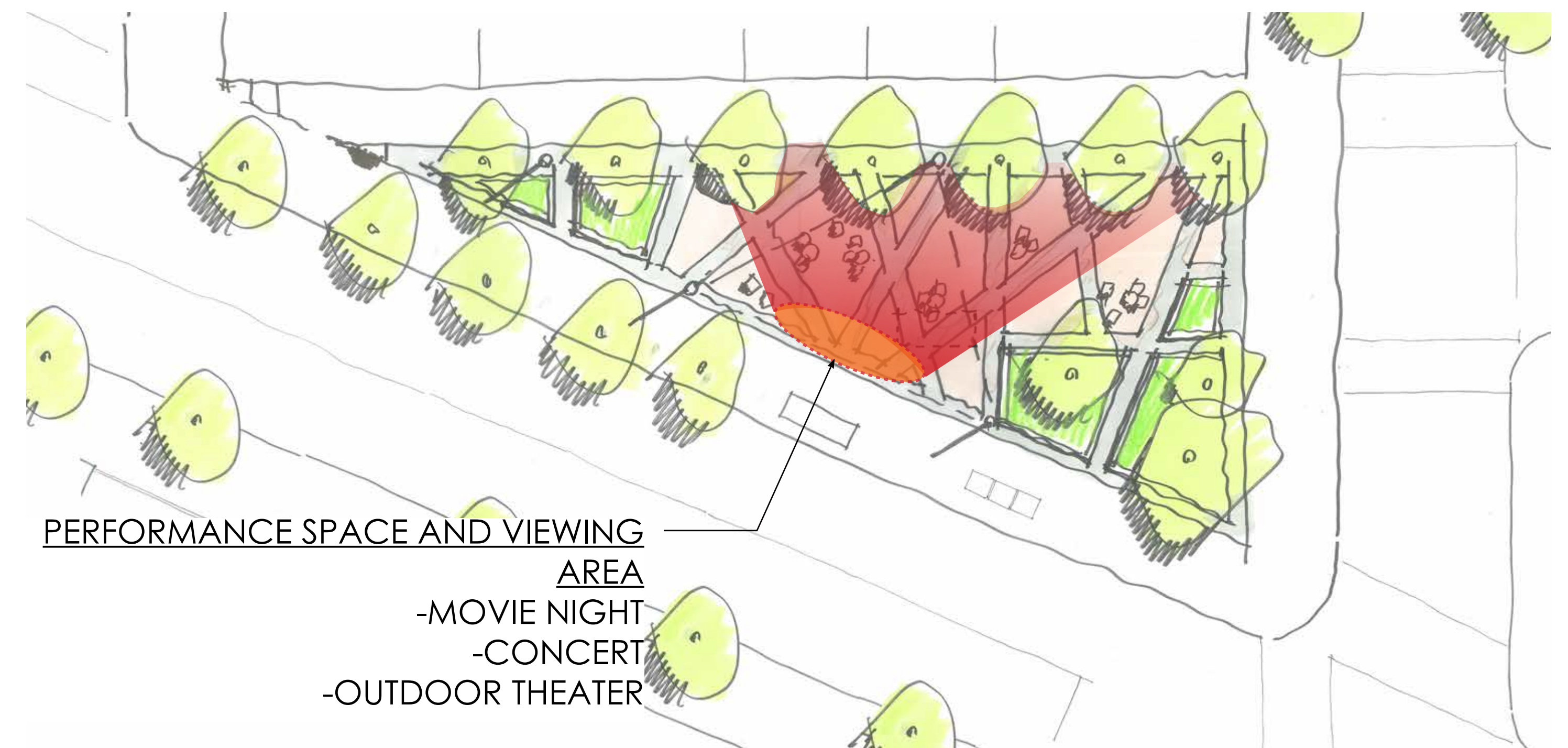
MARKET LAYOUT



FIXED SEATING LAYOUT



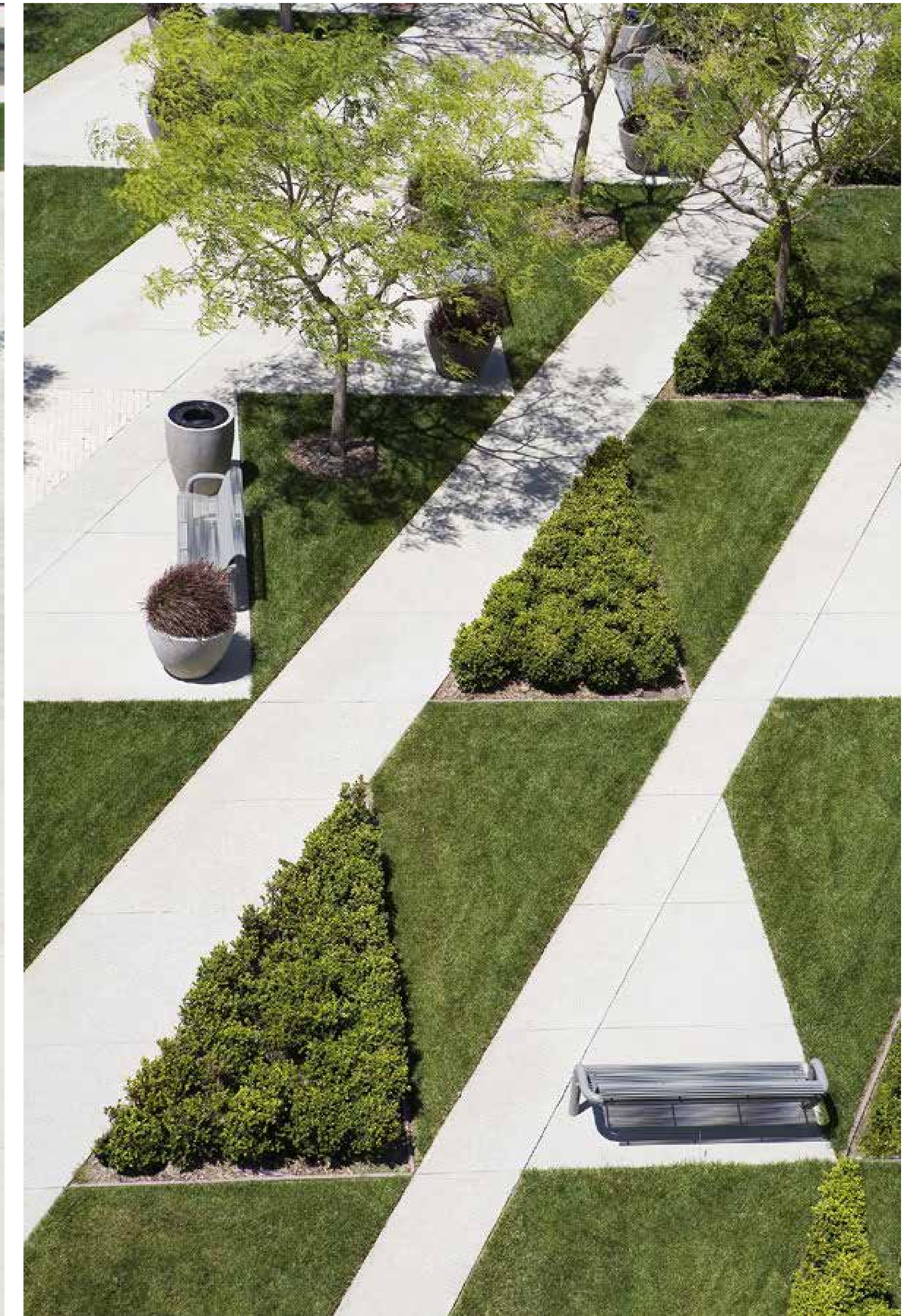
POTENTIAL PUBLIC ART LOCATION



PERFORMANCE SPACE AND VIEWING
AREA
-MOVIE NIGHT
-CONCERT
-OUTDOOR THEATER

EVENT LAYOUT

Option 1

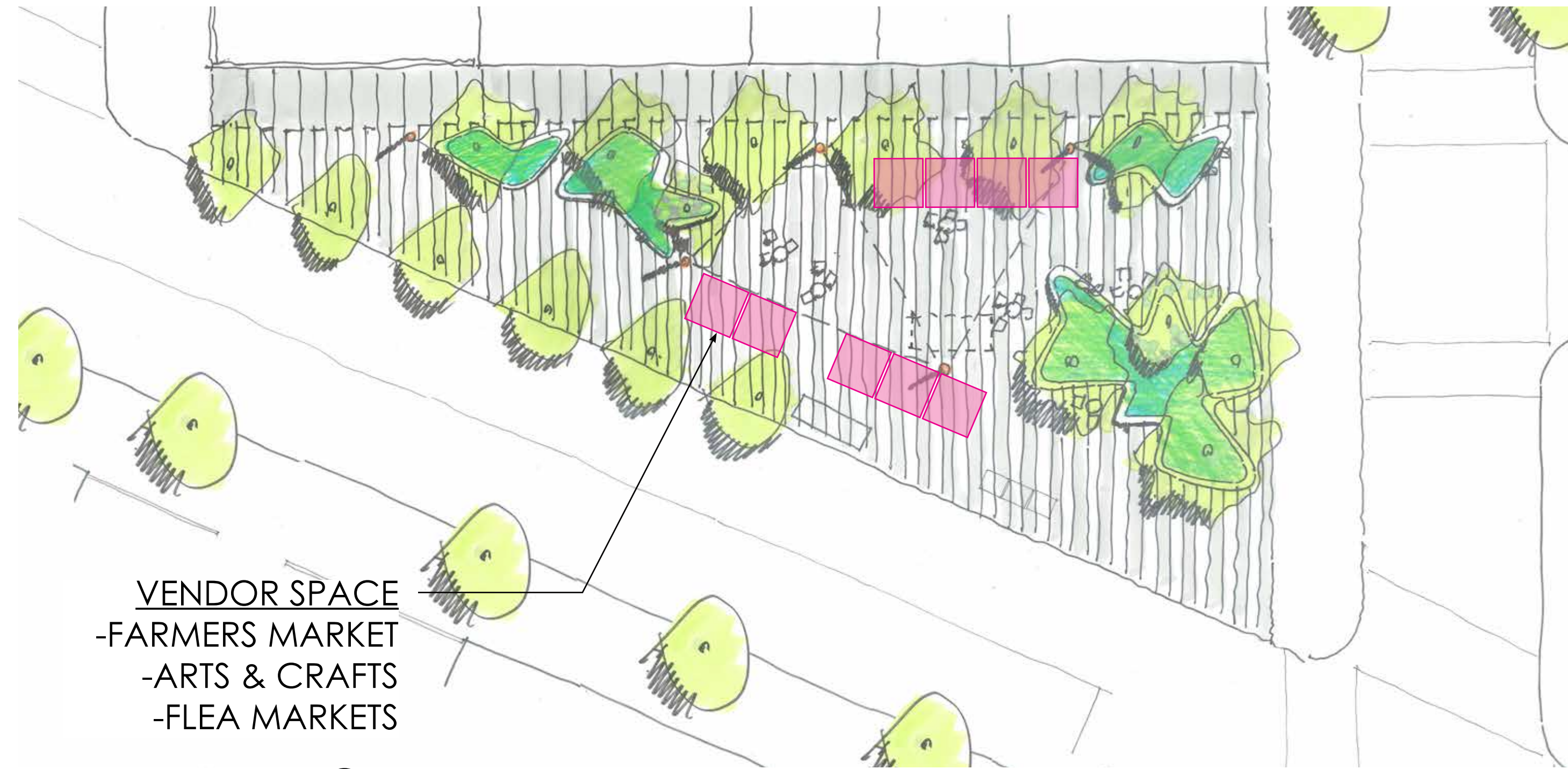


Site Plan - Option 2



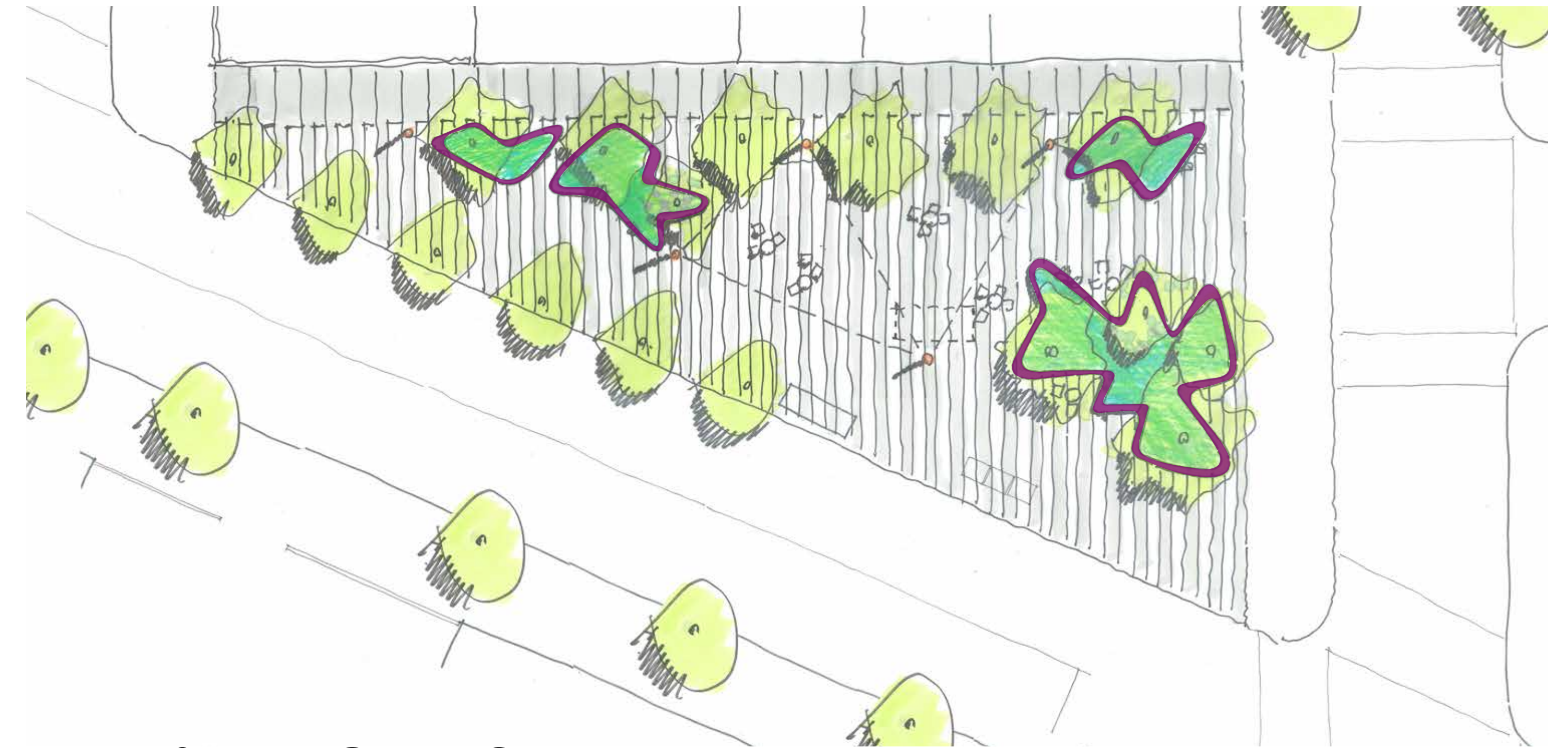
- 1 Standard DOT Sidewalk
- 2 Fixed Planter Seatwall with Backs
- 3 Movable Tables & Chairs
- 4 Future Kiosk
- 5 Colored Concrete
- 6 Light Poles/Shade Support
- 7 Bus Stop

Option 2

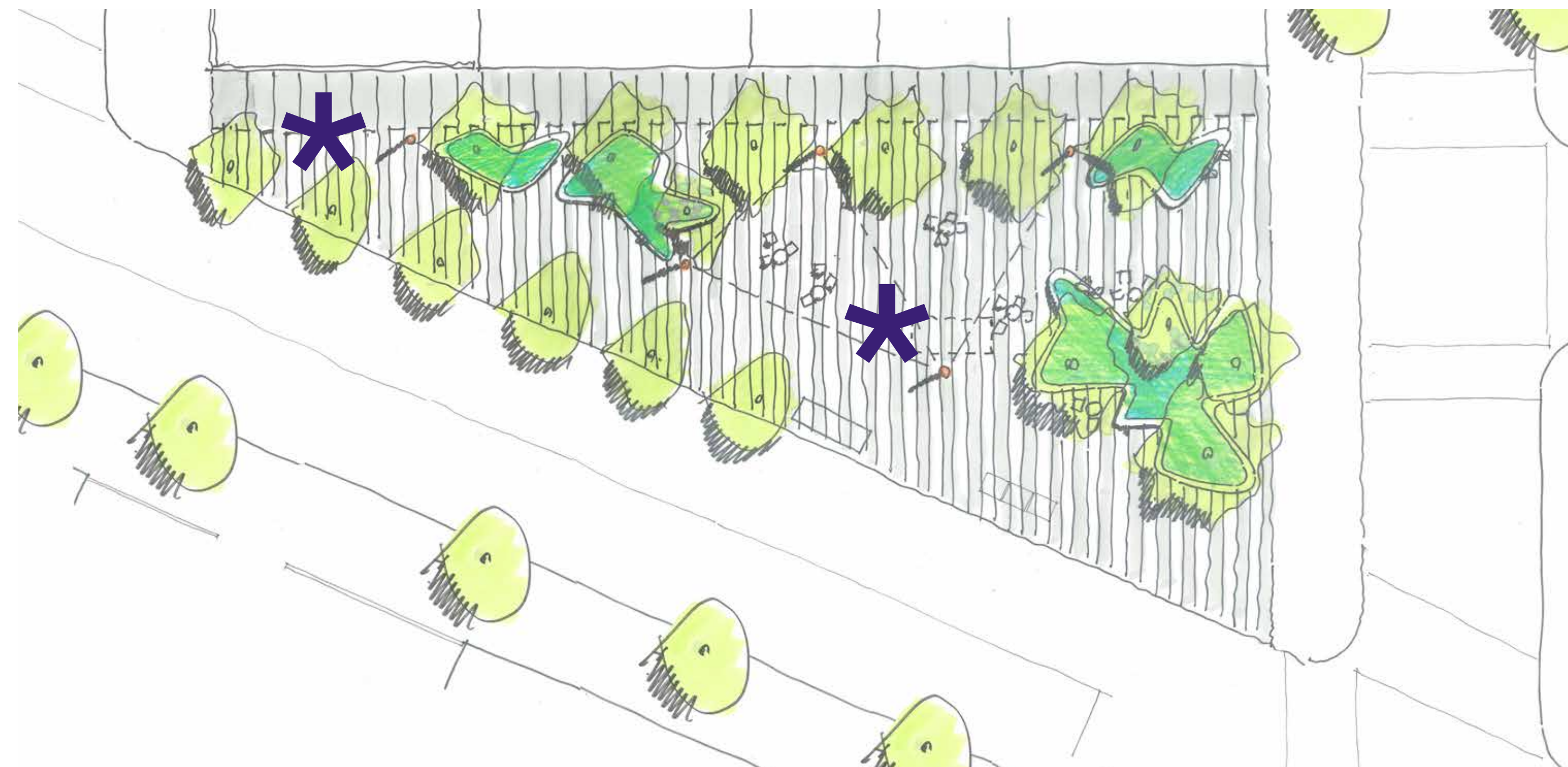


VENDOR SPACE
-FARMERS MARKET
-ARTS & CRAFTS
-FLEA MARKETS

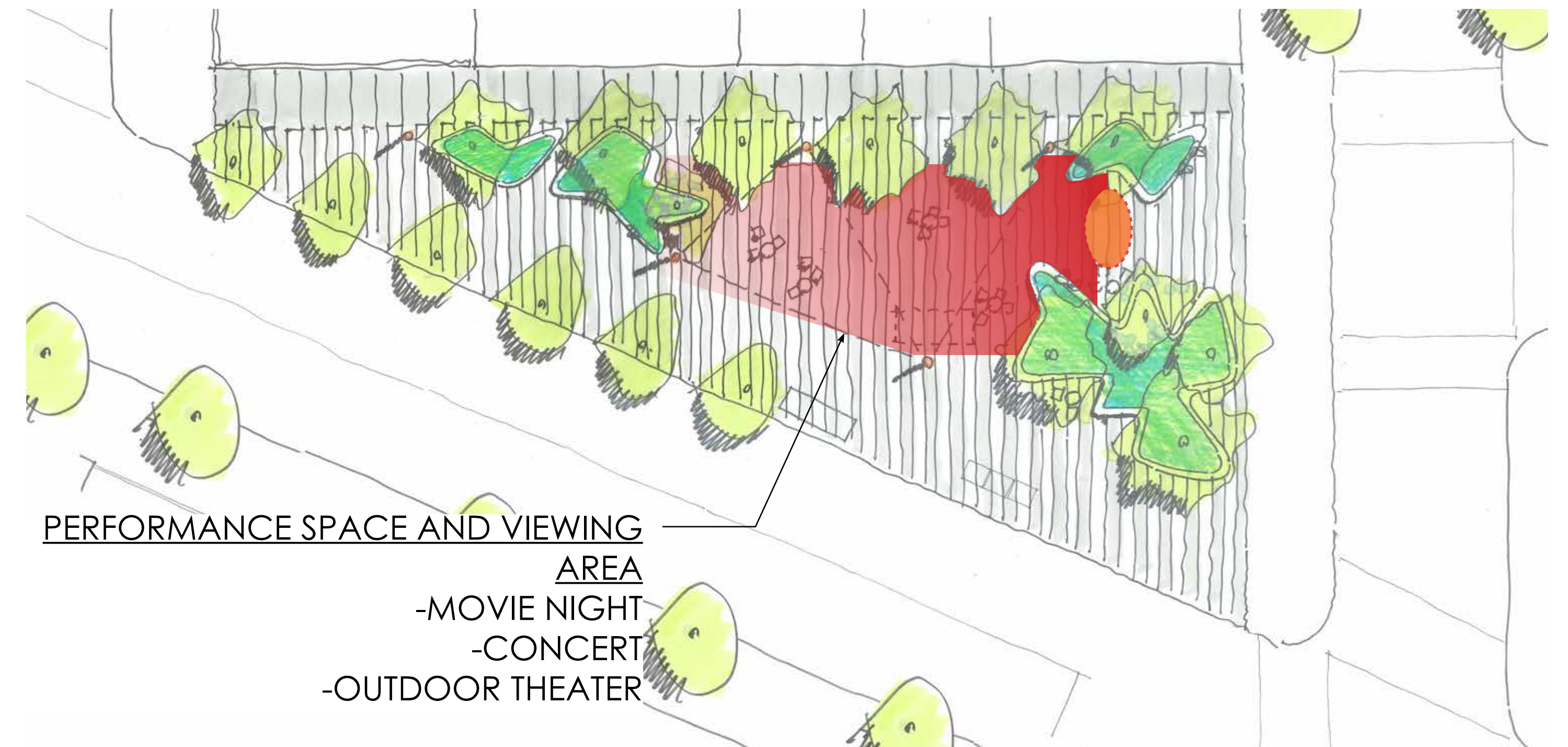
MARKET LAYOUT



FIXED SEATING LAYOUT



POTENTIAL PUBLIC ART LOCATION



PERFORMANCE SPACE AND VIEWING AREA
-MOVIE NIGHT
-CONCERT
-OUTDOOR THEATER

EVENT LAYOUT

Option 2

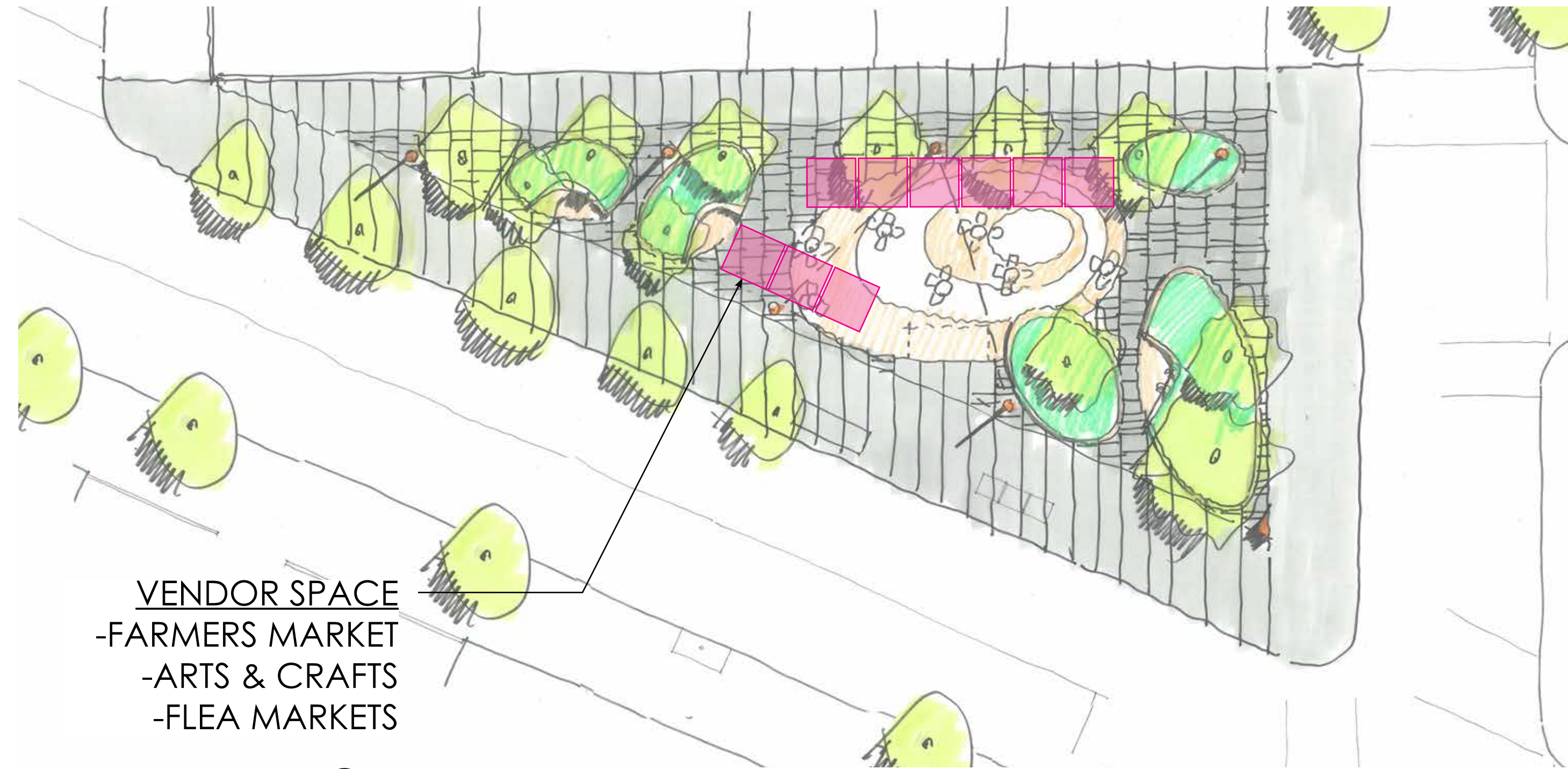


Site Plan - Option 3



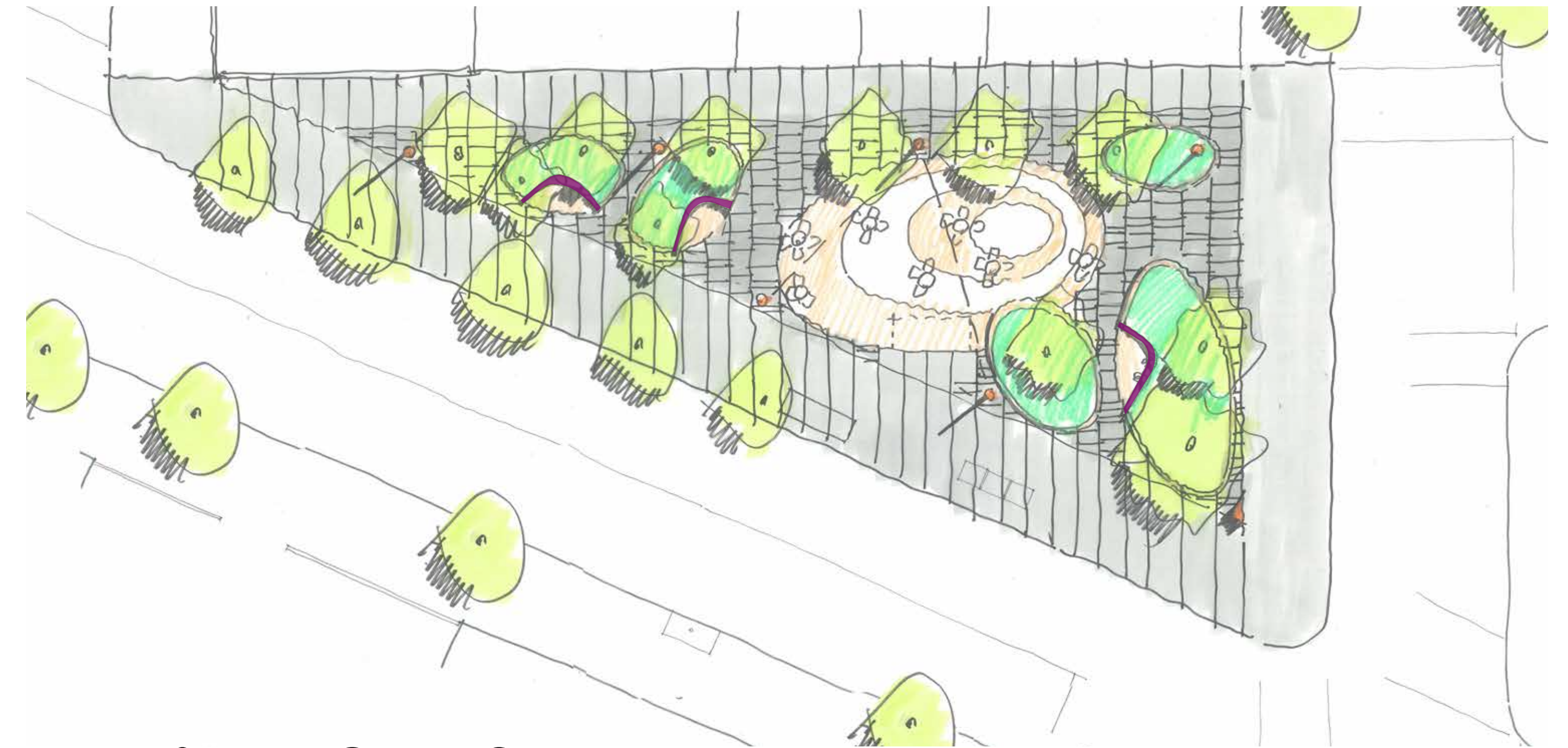
- | | |
|-------------------------------------|-----------------------------|
| 1 Standard DOT Sidewalk | 6 Colored Concrete |
| 2 Fixed Planter Seatwall with Backs | 7 Light Poles/Shade Support |
| 3 Planter with Curb | 8 Signage |
| 4 Movable Tables & Chairs | 9 Bus Stop |
| 5 Future Kiosk | |

Option 3

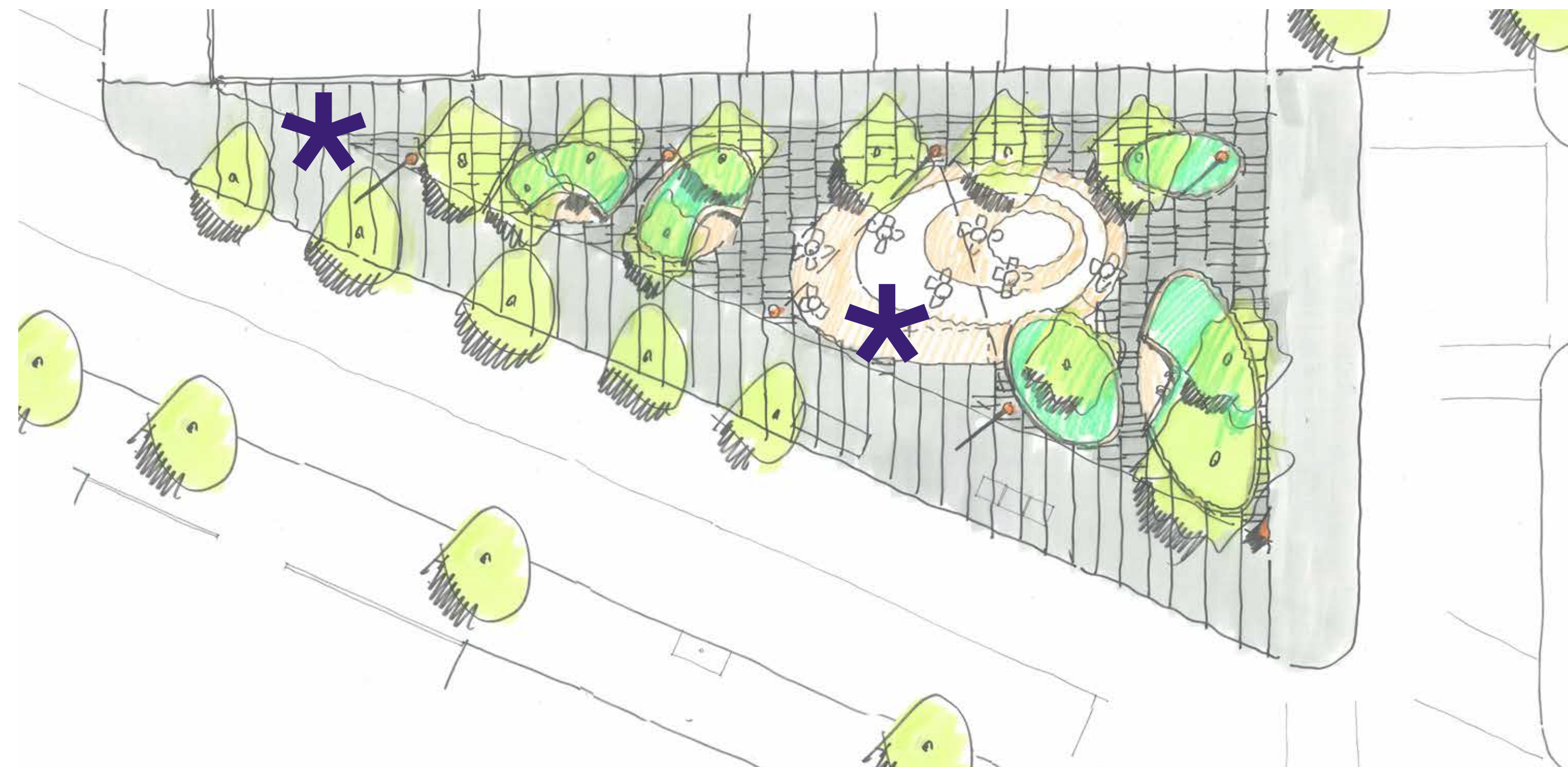


VENDOR SPACE
-FARMERS MARKET
-ARTS & CRAFTS
-FLEA MARKETS

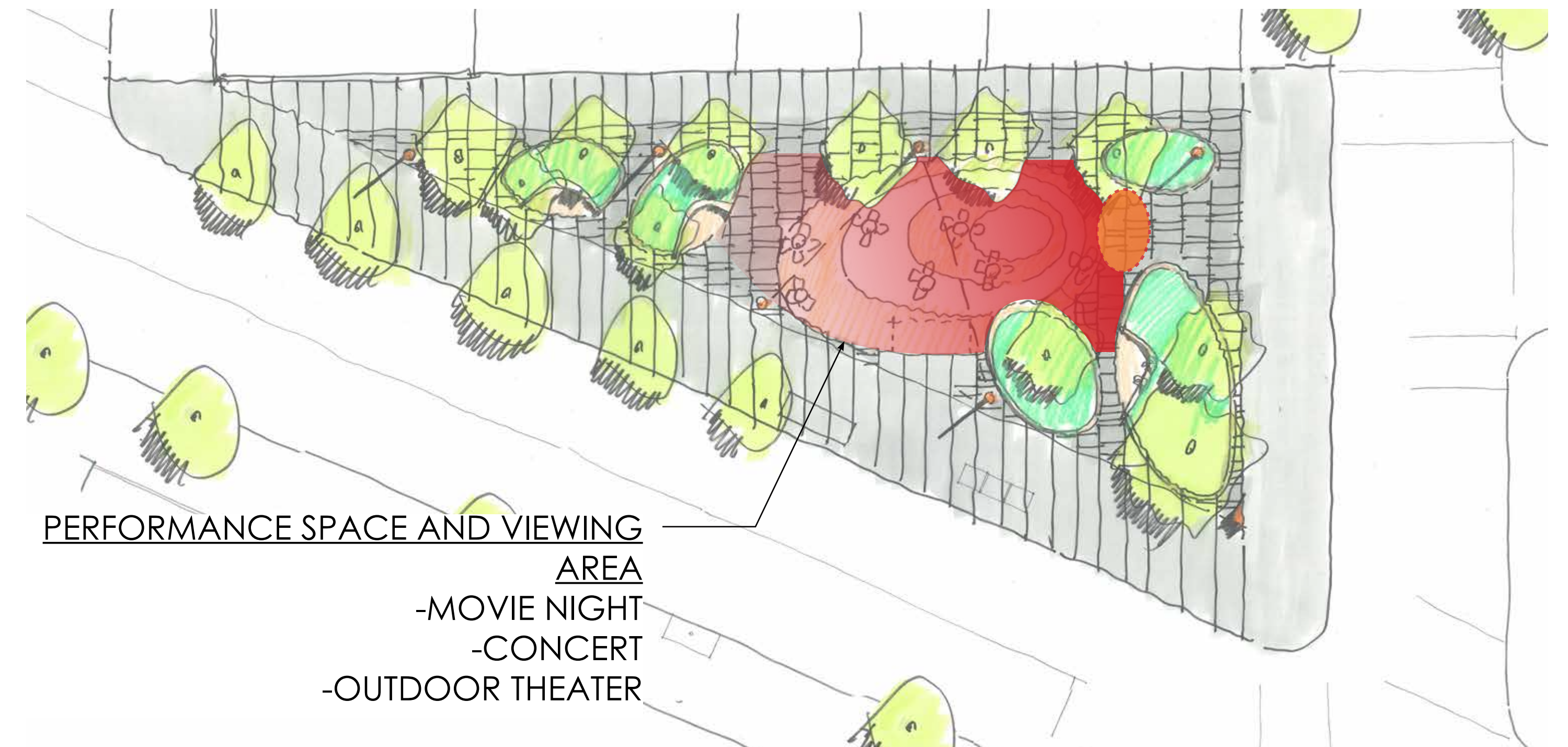
MARKET LAYOUT



FIXED SEATING LAYOUT



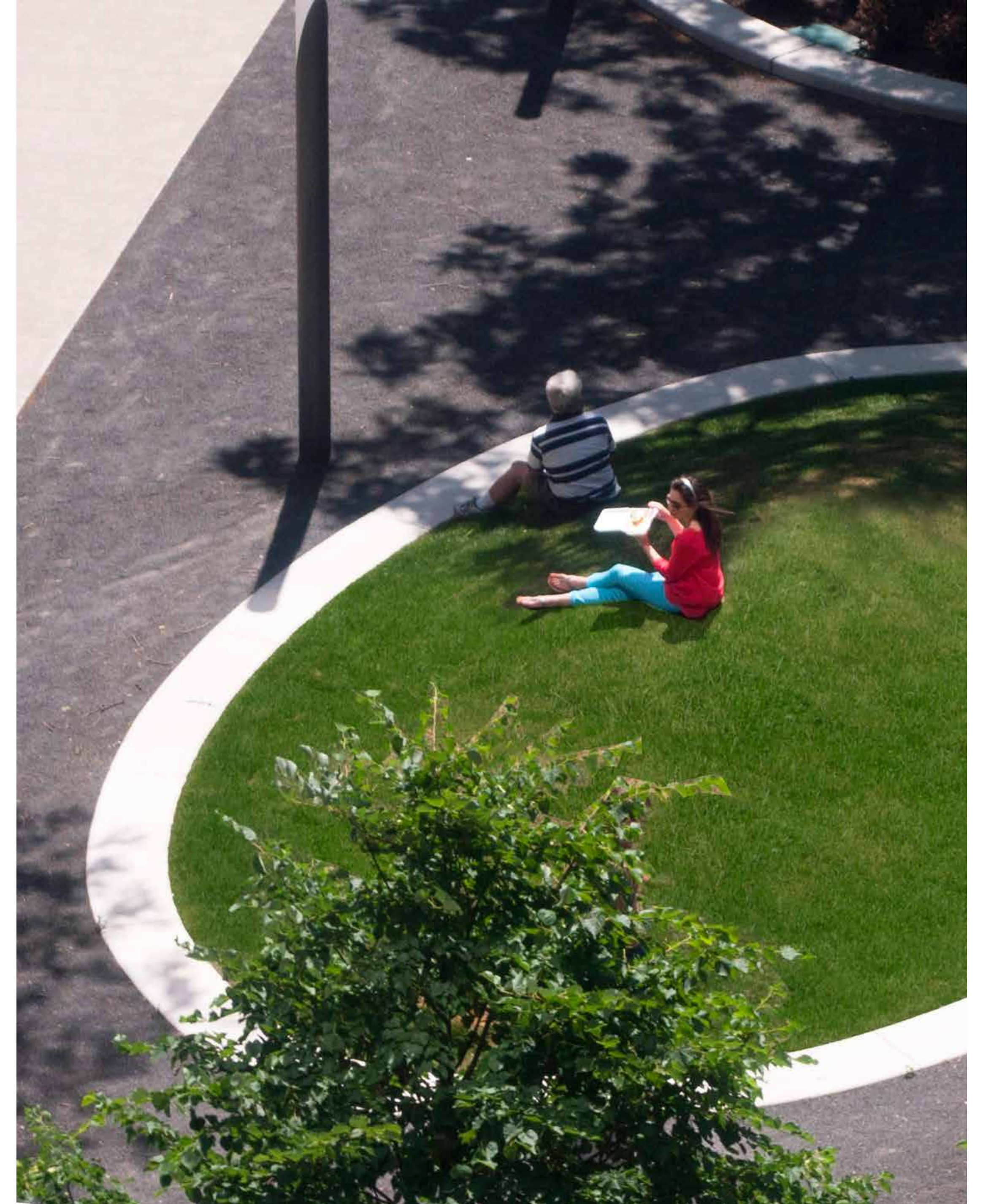
POTENTIAL PUBLIC ART LOCATION



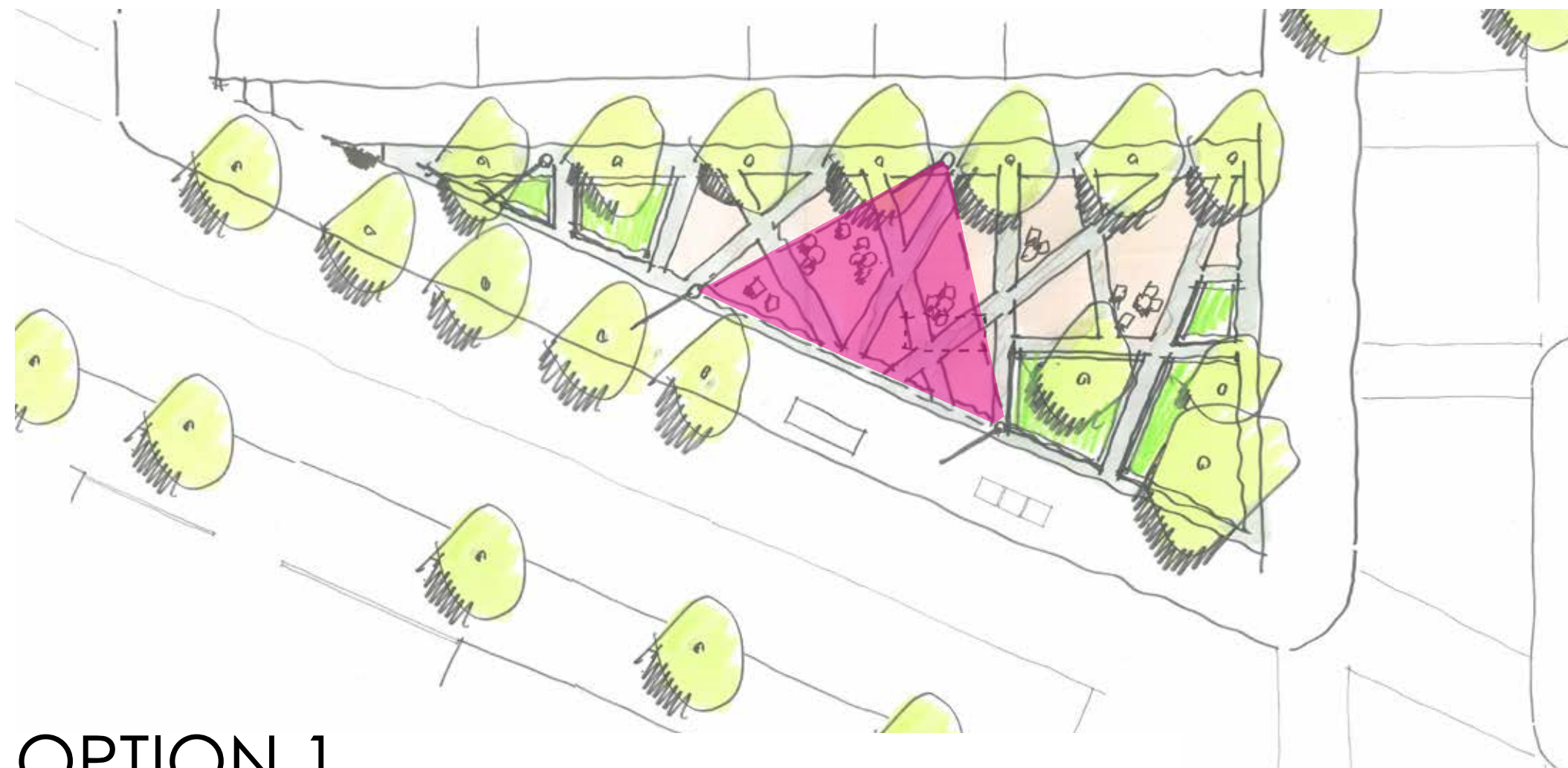
PERFORMANCE SPACE AND VIEWING AREA
-MOVIE NIGHT
-CONCERT
-OUTDOOR THEATER

EVENT LAYOUT

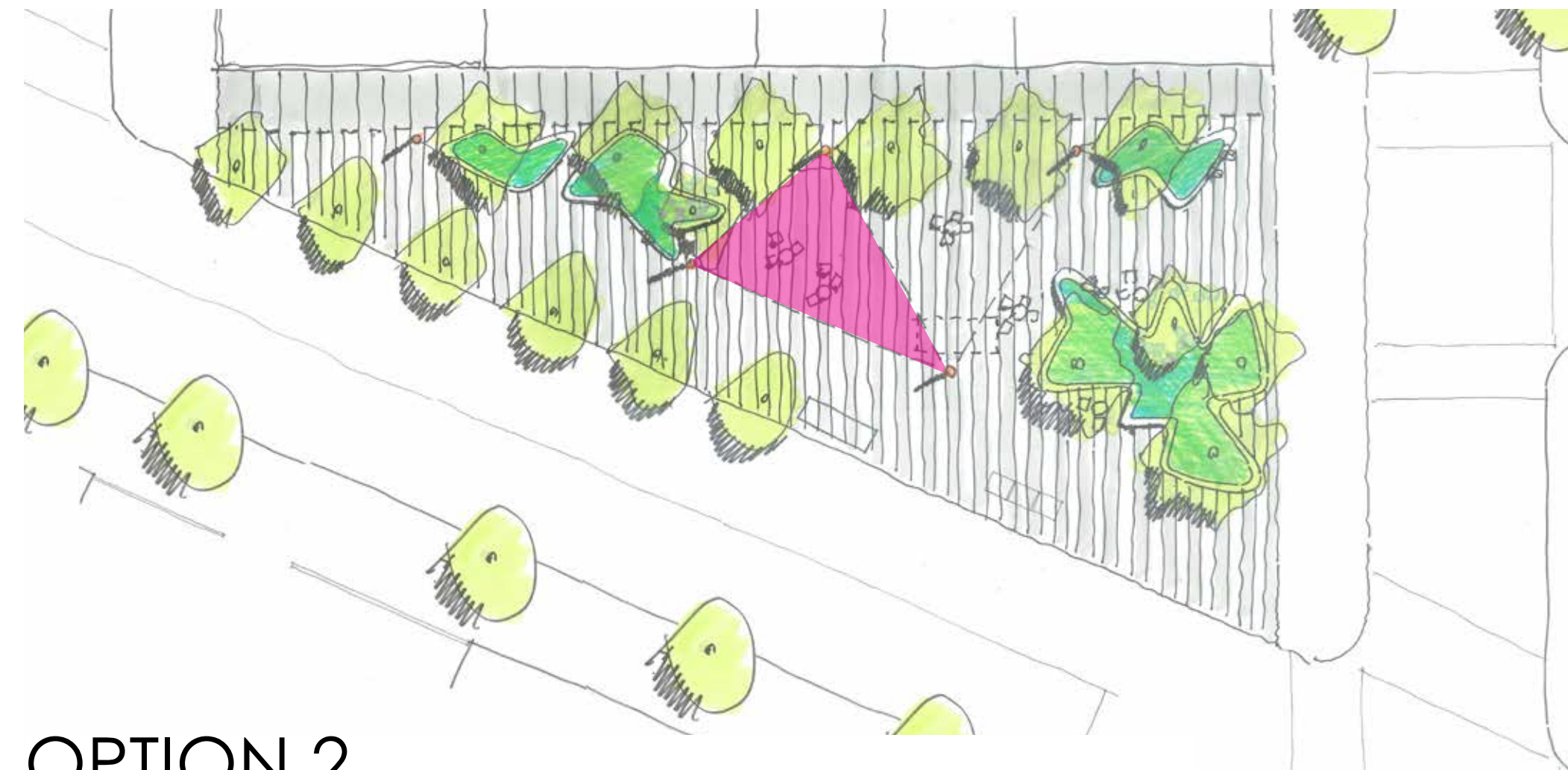
Option 3



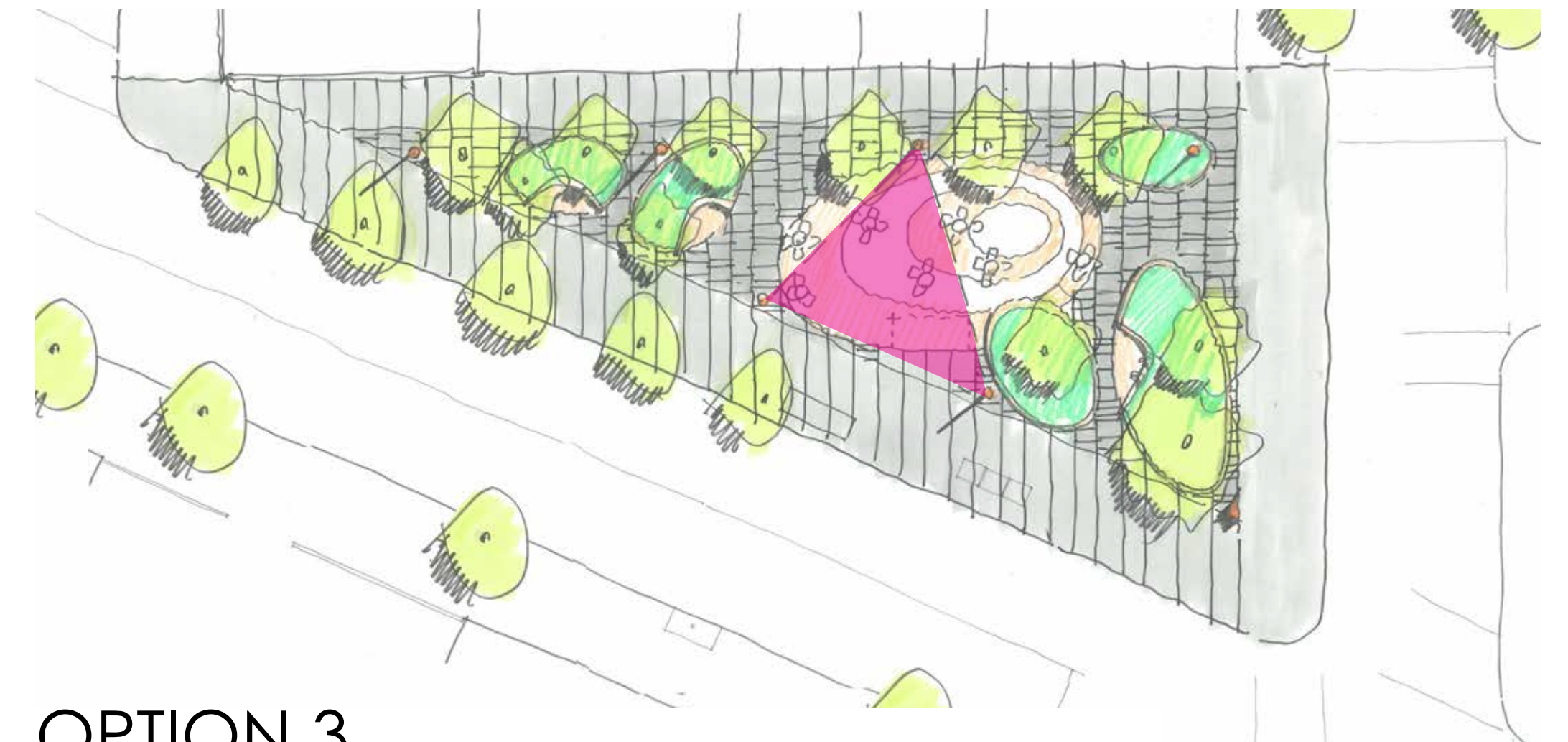
Shade Structure



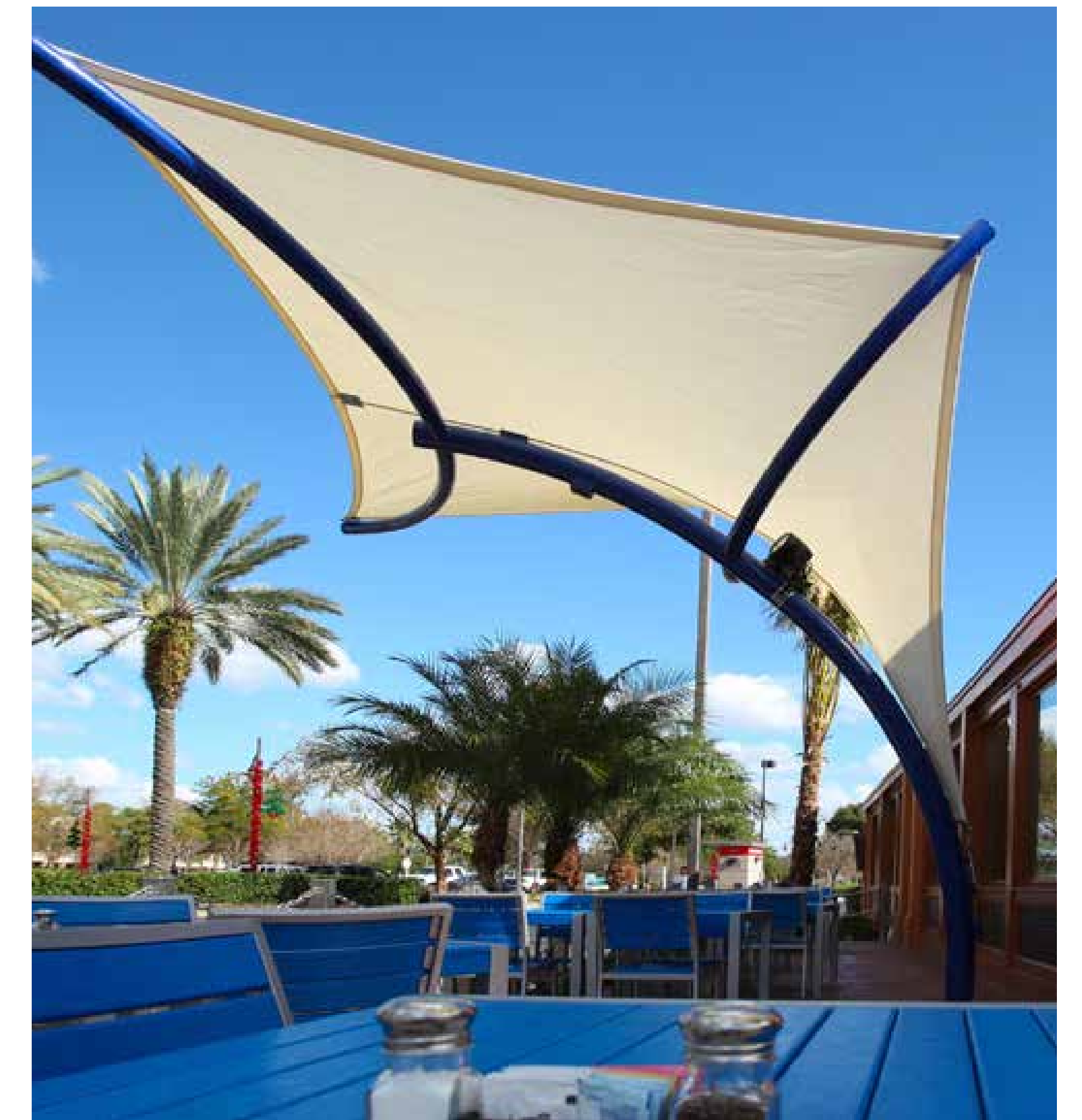
OPTION 1



OPTION 2



OPTION 3



Existing Small Tree and Possible Replacement



EXISTING TREE

Common Name: Eastern Redbud

Botanical Name: *Cercis canadensis*

Attributes:

- Low branched tree limits pedestrian circulation
- Provides limited usable shade
- Blocks sight lines into plaza



PROPOSED TREE - OPTION 1

Common Name: Honey Locust

Botanical Name: *Gleditsia triacanthos* var. *inermis*

Attributes:

- High branches allow pedestrian circulation to flow under the tree
- High branches and wider projected crown will provide more usable shade
- High branches allow sight lines into plaza; enhancing security



PROPOSED TREE - OPTION 2

Common Name: Japanese Zelkova

Botanical Name: *Zelkova serrata*

Attributes:

- High branches allow pedestrian circulation to flow under the tree
- High branches and wider projected crown will provide more usable shade
- High branches allow sight lines into plaza; enhancing security

Public Arts



Corona Plaza, Queens

Performance in collaboration with the Queens Museum of Art



Hunts Point Avenue

Ruby Walks, Sharon De La Cruz



Archer Avenue

Humps and Bumps, Bro Lab



Willoughby Plaza, Brooklyn

Veteran's Artwork Exhibit on DOT's Temporary Art Display Cases

PROJECT TIMELINE / NEXT STEPS

June 2010	FAB started preliminary conversations with community stakeholders
Fall 2010	FAB approached DOT about project
January 2011	DOT agreed to investigate implementation of a plaza with interim materials
Winter/Spring 2011	Further community outreach by FAB
May 2011	Community Workshop for interim materials plaza
June 2011	CB2 endorsed proposed interim materials plaza design
Summer 2011	Plaza with interim materials installed
Spring 2012	FAB's application for a capital construction plaza accepted by NYCDOT
September 2014	Community Workshop #1
December 2014	Community Workshop #2
December 2015	Design completion (projected)
Summer 2016	Construction start (projected)
2017	Construction completion (projected)