

115 Avenue

Springfield Blvd to Cross Island Parkway Service Road
Corridor Safety Improvements

2014



Need: Why 115 Ave?

- **High Crash Corridor**

- 8.3 Killed or Severely Injured (KSI) crashes per mile ranking in top third of corridors in Queens
- 2012 motor vehicle fatality at 227 St

- History of Community Requests for traffic calming

- **Nov-Dec 2012**—Numerous community requests after fatality at 227 St and 115 Ave
 - Speeding, passing, and swerving vehicles cited
 - **Jan 2013**—Speed hump request denied
 - Driveways, utilities, and proximity to signals cited
 - **March/April 2013**—227 St signal installed
- **July 2013**—EQUAL and Community Board request other traffic calming measures in addition to signal at 227 St
- **December 2014**—NYC DOT presents new traffic calming proposal



Corridor Traffic Safety Report

115 Ave - Springfield Blvd to Cross Island Pkwy SR, QN

Injury Summary, 2008-2012 (5 Years)

	Total Injuries	Severe Injuries	Fatalities	KSI
Pedestrian	7	0	0	0
Bicyclist	1	0	0	0
Motor Vehicle Occupant	124	6	1	7
Total	132	6	1	7

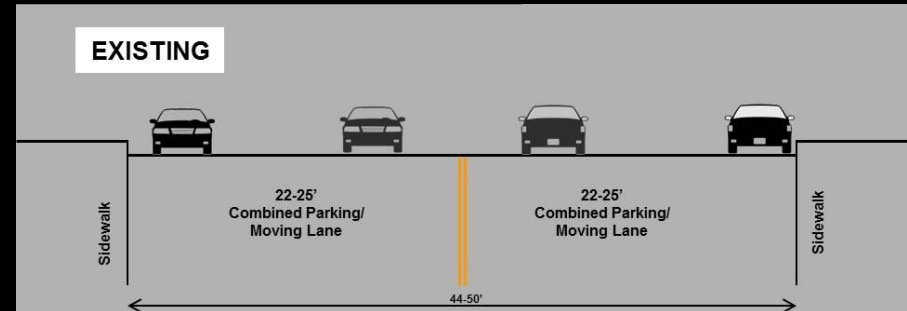
Fatalities, 01/01/2008-10/13/2014 :	1
-------------------------------------	---

Source: Fatalities: NYCDOT
Injuries: NYSDOT
KSI: Persons Killed or
Severely Injured

Pedestrian:	0
Bicyclist:	0
Motor Vehicle Occupant:	1

Need: Why 115 Ave?

- **No lane designation markings**
 - 44-50ft total width with no clear lane designation
 - Encourages speeding, illegal passing, and swerving
- **Speeding vehicles**
 - Speeding was the cause of 2012 fatality
 - Speed Study—2014
 - Speeds as high as 50 MPH recorded
 - Eastbound
 - 55.5% of vehicles speeding
 - Westbound
 - 55% of vehicles speeding



Odds of Pedestrian Death*

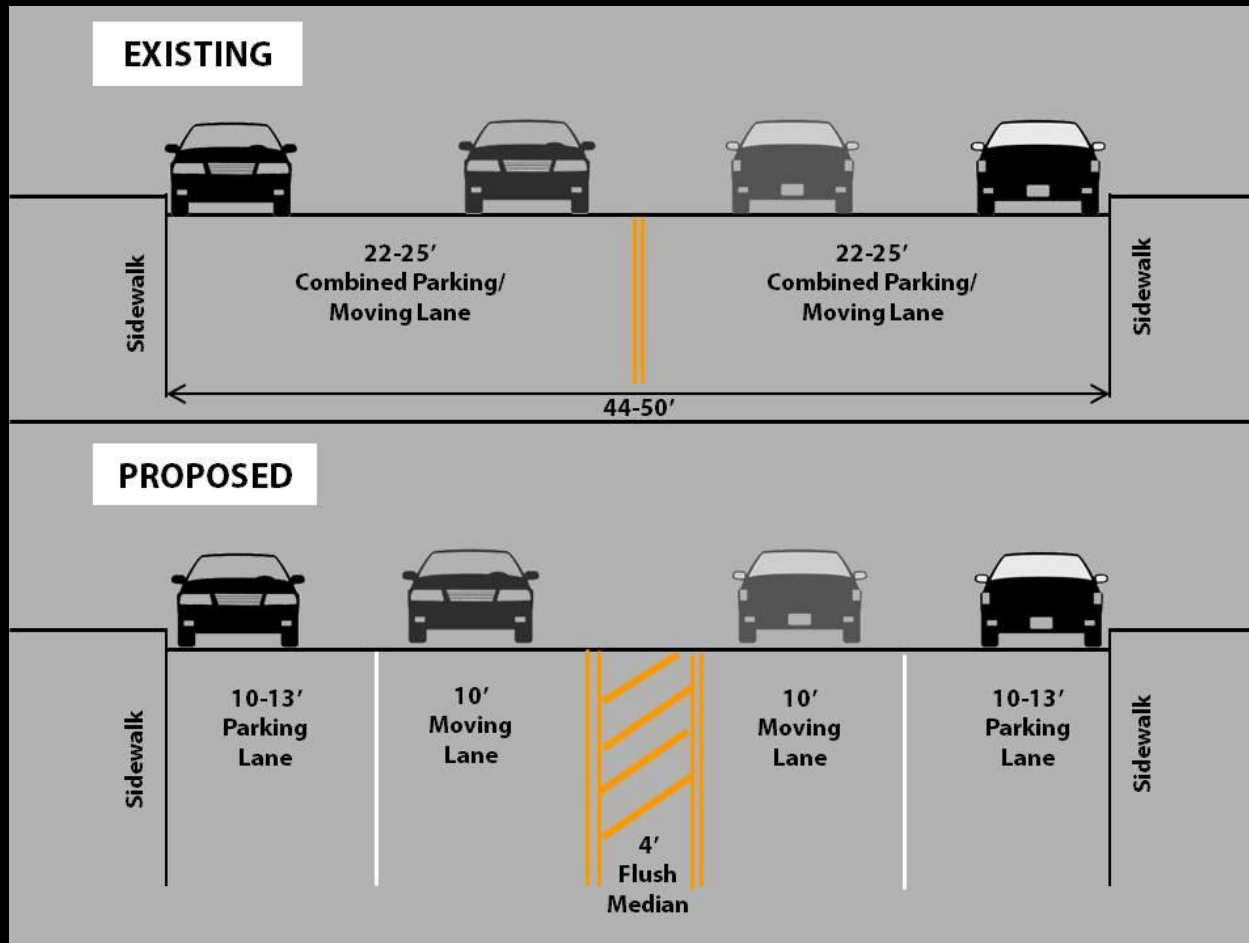


70% → 20% → 10%



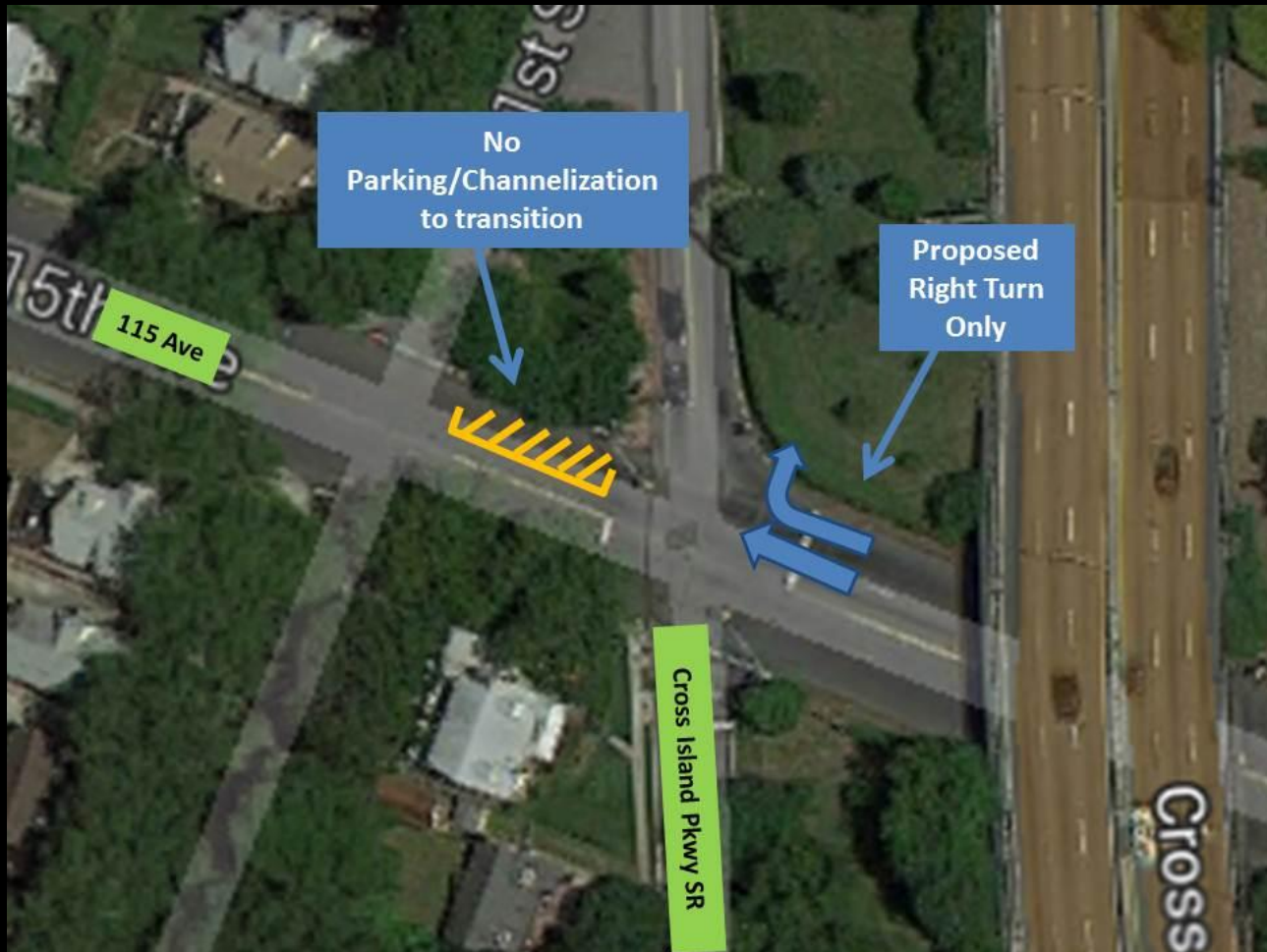
Proposal

- Install a flush median, parking lane stripe from Springfield Blvd to Cross Island Parkway Service Road



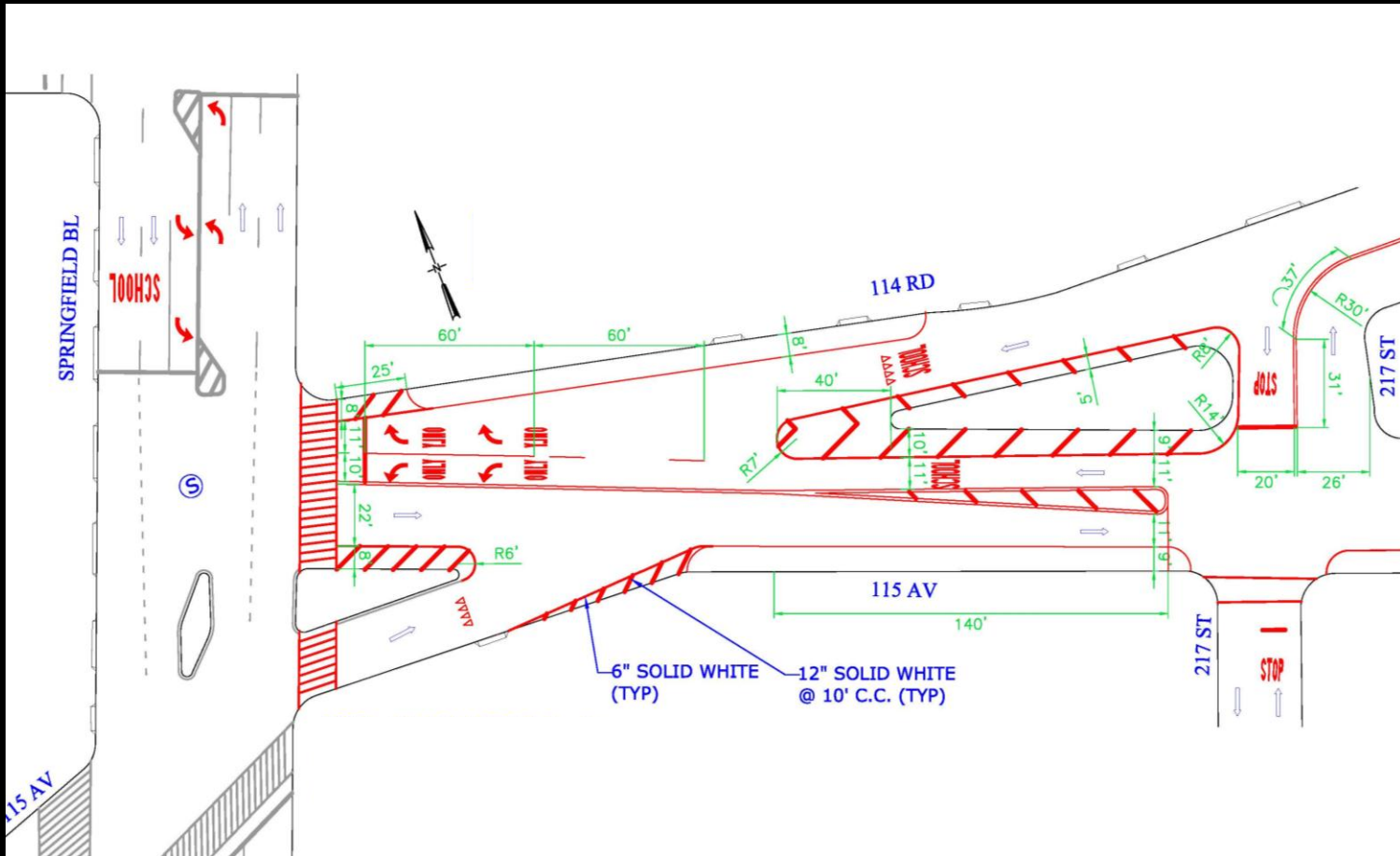
Proposal

- Add a right turn only lane on westbound 115 Ave and Cross Island Parkway Service Road where the street changes from two lanes to one



Proposal

- Add channelization at Springfield Blvd and 115 Ave/114 Rd to better define the lane designations



Proposal

- 115 Ave with a flush median and parking lane stripes



EXISTING

115 Ave at 221 St looking east



PROPOSED

Benefits of Proposal

Benefits

- **Respond to community's request**
 - New design will fulfill the community's desire for traffic calming on 115 Ave
- **Reduce speeds**
 - A flush median and parking lane stripe will tighten lane geometry, constraining lanes visually for drivers, which will help reduce vehicle speeds
- **Reduce Crashes**
 - Lower speeds reduce the likelihood of injury crashes and fatality crashes
 - New markings will reduce the likelihood of illegal overtaking and reckless driving

Questions?

**Thank
You**