

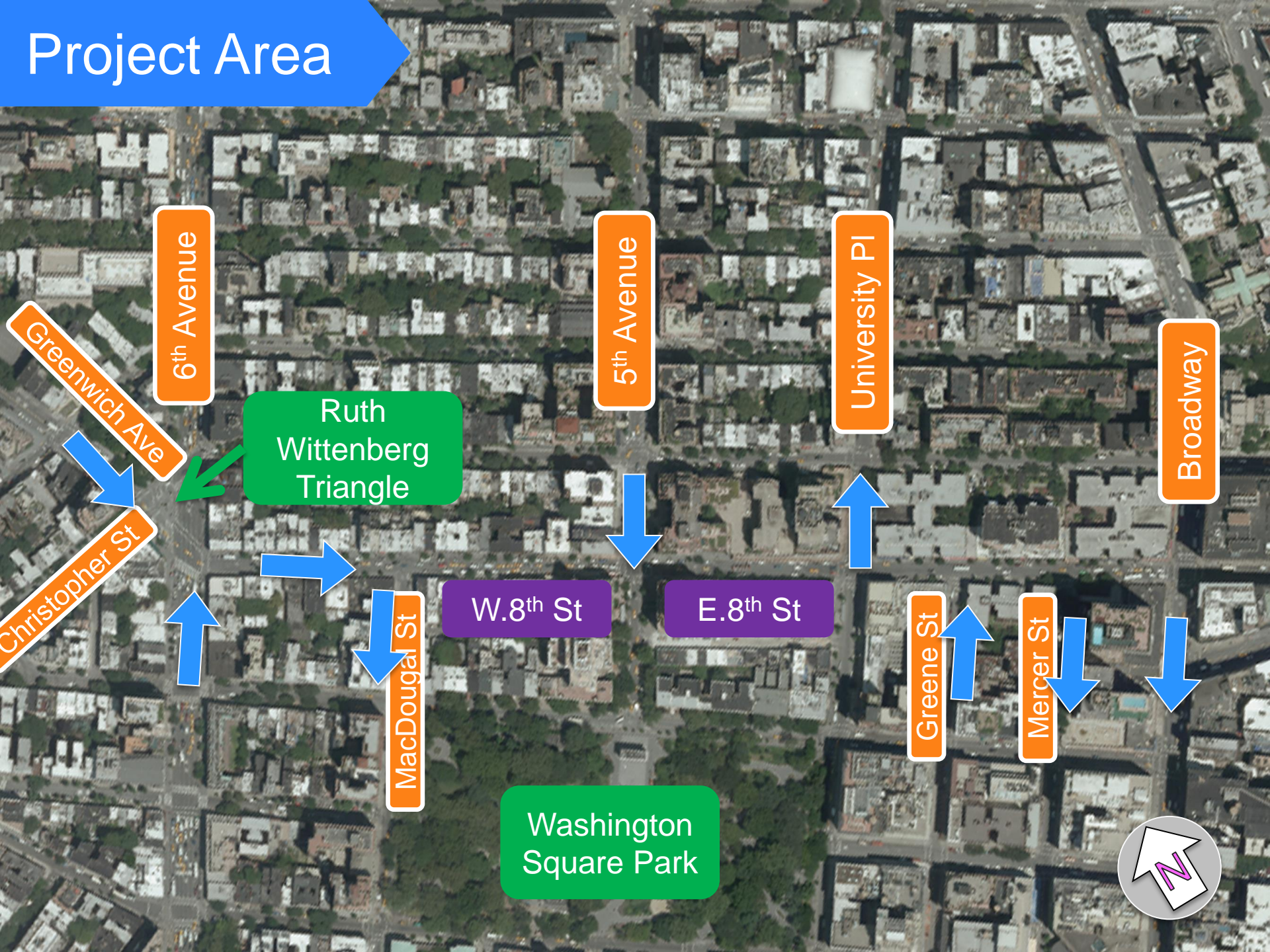
# 8<sup>th</sup> Street:

6<sup>th</sup> Ave to Broadway





# Project Area





# Background

Village Alliance BID requested safety improvements & bicycle corrals along 8<sup>th</sup> St

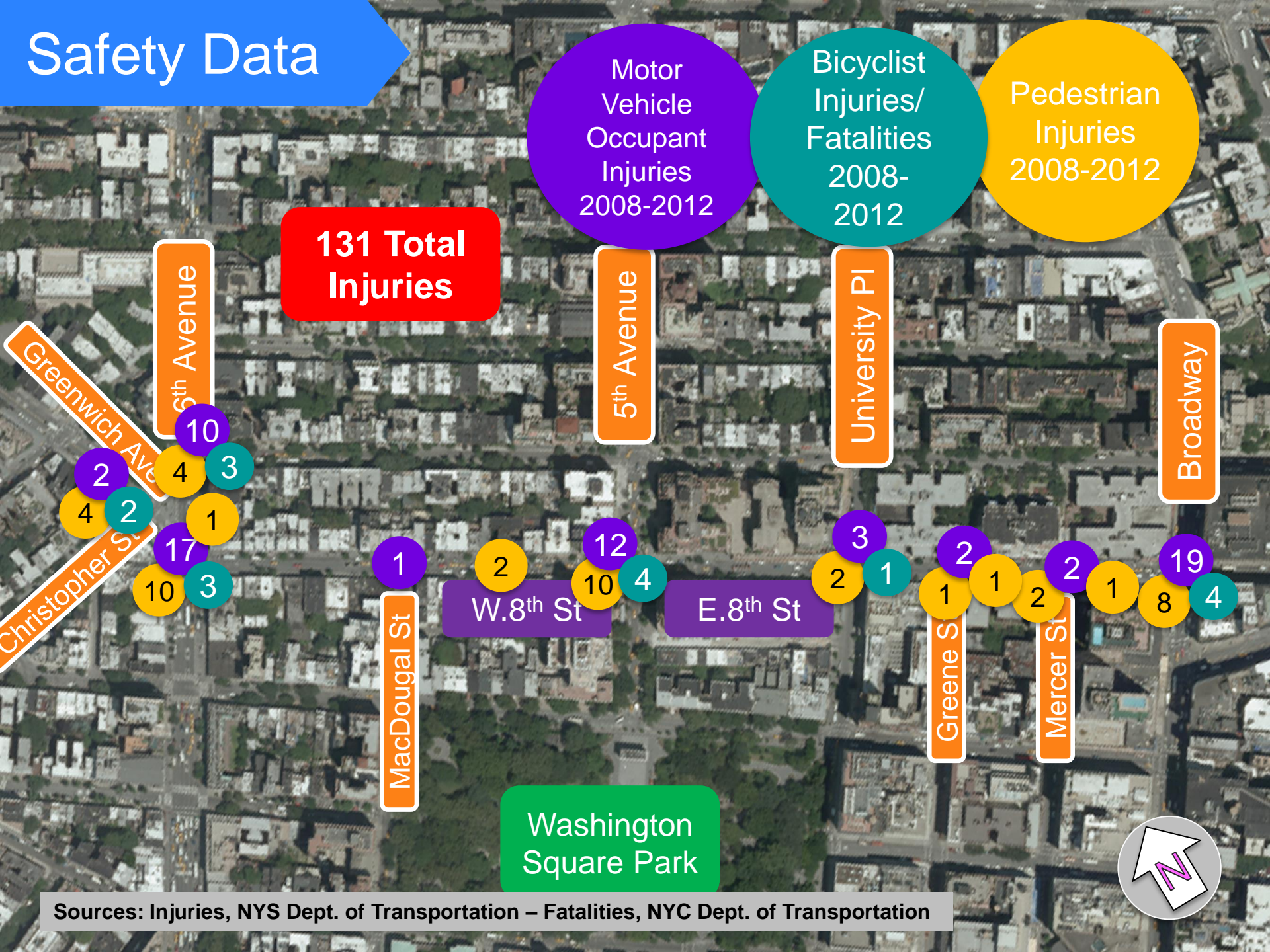
Community Board 2 requested pedestrian safety improvements near Ruth Wittenberg Triangle

High crash corridor

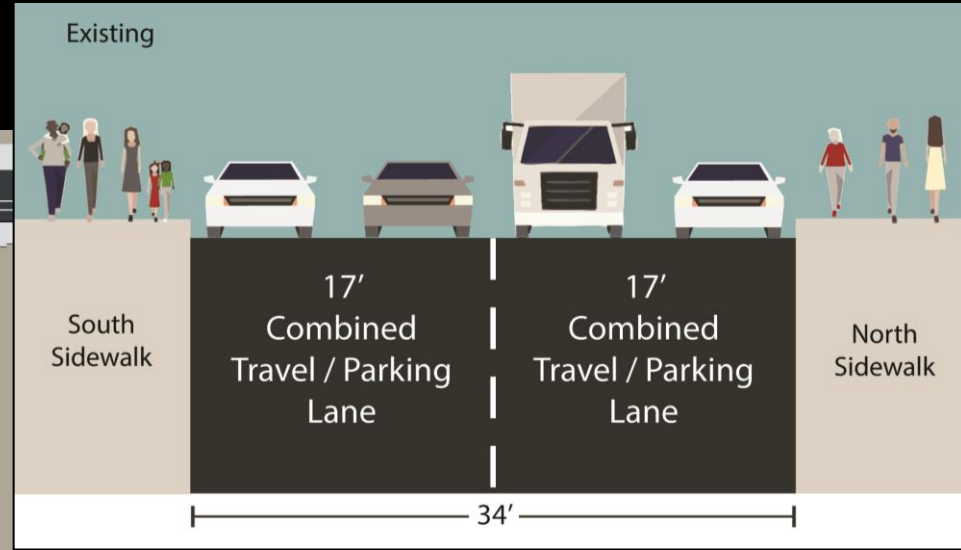




# Safety Data



# Existing Conditions





# Existing Conditions

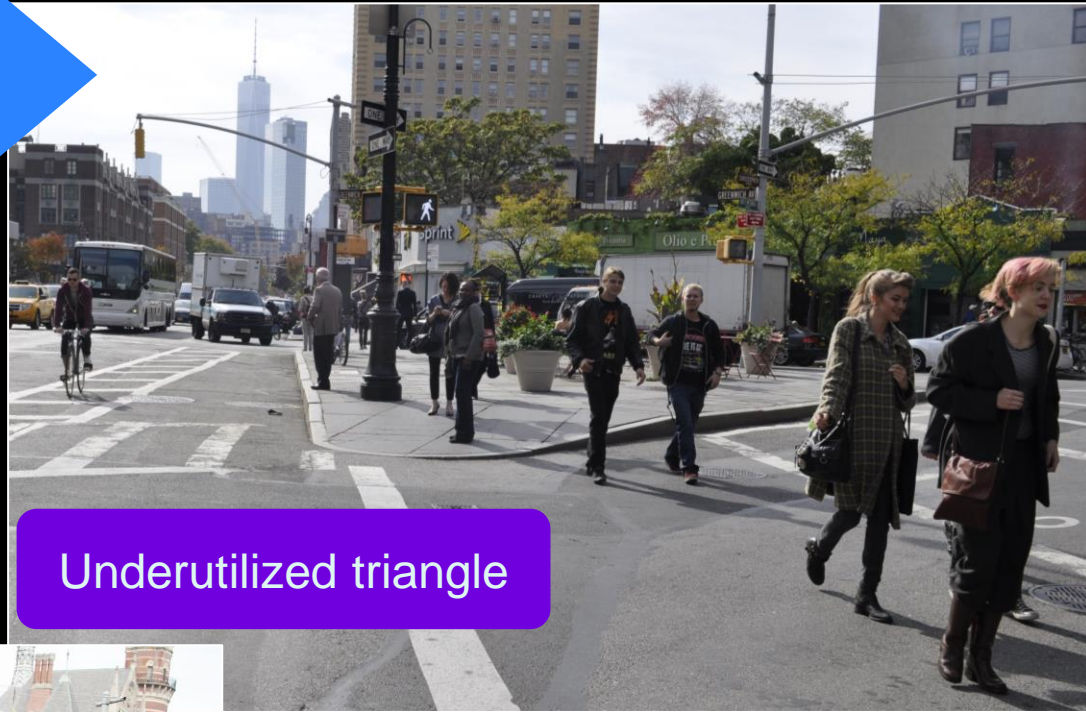
Misaligned curblines

W.8<sup>th</sup> St & 6<sup>th</sup> Avenue

Underutilized triangle

Ruth Wittenberg Triangle  
(6<sup>th</sup> Ave, W.9<sup>th</sup> St, Greenwich Ave)

Long crossing distances at W.8<sup>th</sup> & 6<sup>th</sup> Ave



# Existing Conditions



E.8<sup>th</sup> St at Greene St

High pedestrian crossing volumes at MacDougal, Greene, Mercer and mid-block

W.8<sup>th</sup> St at MacDougal St





# Existing Conditions



E.8<sup>th</sup> St & 5<sup>th</sup> Avenue

Turning conflicts

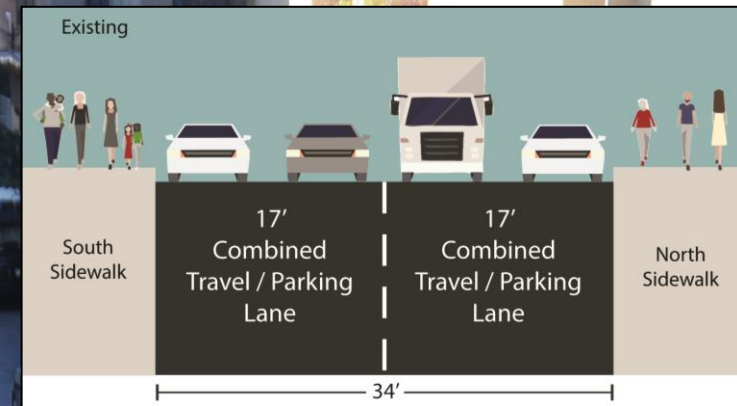


Greenwich Ave & 6<sup>th</sup> Avenue



# Existing Conditions

Corridor too narrow for two proper travel lanes



Often functions with single travel lane

E.8<sup>th</sup> St & University Pl



# Rapid Response Toolkit

- Pavement markings
- Signal modifications
- New signage
- Painted and/or textured surfaces
- Flexible delineators





# Rapid Response Toolkit



Typical bike corral  
with planters



# Rapid Response Toolkit



Tinted concrete simulating  
bluestone pavers

Concrete island  
examples





# Proposed

Ruth Wittenberg Triangle  
6<sup>th</sup> Ave/Greenwich Ave/  
W.8<sup>th</sup>/W.9<sup>th</sup>





# Proposed

Enlarged  
Ruth Wittenberg  
Triangle  
(replacing blue stone  
with concrete)

Ruth Wittenberg Triangle  
6<sup>th</sup> Ave/Greenwich Ave/  
W.8<sup>th</sup>/W.9<sup>th</sup>

Greenwich Ave

W.9<sup>th</sup> Street

6<sup>th</sup> Ave

W.8<sup>th</sup> Street

phar St





# Proposed

6 neckdowns  
(concrete where feasible)

Ruth Wittenberg Triangle  
6<sup>th</sup> Ave/Greenwich Ave/  
W.8<sup>th</sup>/W.9<sup>th</sup>





# Proposed

W.8<sup>th</sup> St  
MacDougal to 5<sup>th</sup> Ave





# Proposed

W.8<sup>th</sup> St  
MacDougal to 5<sup>th</sup> Ave

Painted  
neckdowns

Requested  
bike corral

Left turn  
only lane

5<sup>th</sup> Ave

W.8<sup>th</sup> Street

New  
lane/parking  
markings

Painted  
neckdowns

New  
signal LPI  
(under inv.)

E.8<sup>th</sup> Street

Macdougal St





# Proposed

E.8<sup>th</sup> St  
University Pl to Broadway





# Proposed

E.8<sup>th</sup> St  
University Pl to Broadway

University Pl

Painted  
neckdowns

E.8<sup>th</sup> Street

Broadway

New  
lane/parking  
markings

Requested  
bike corral

Right turn  
only lane

Proposed



South  
Sidewalk

11'  
Parking  
Lane

11'  
Travel Lane

12'  
Parking  
Lane

North  
Sidewalk

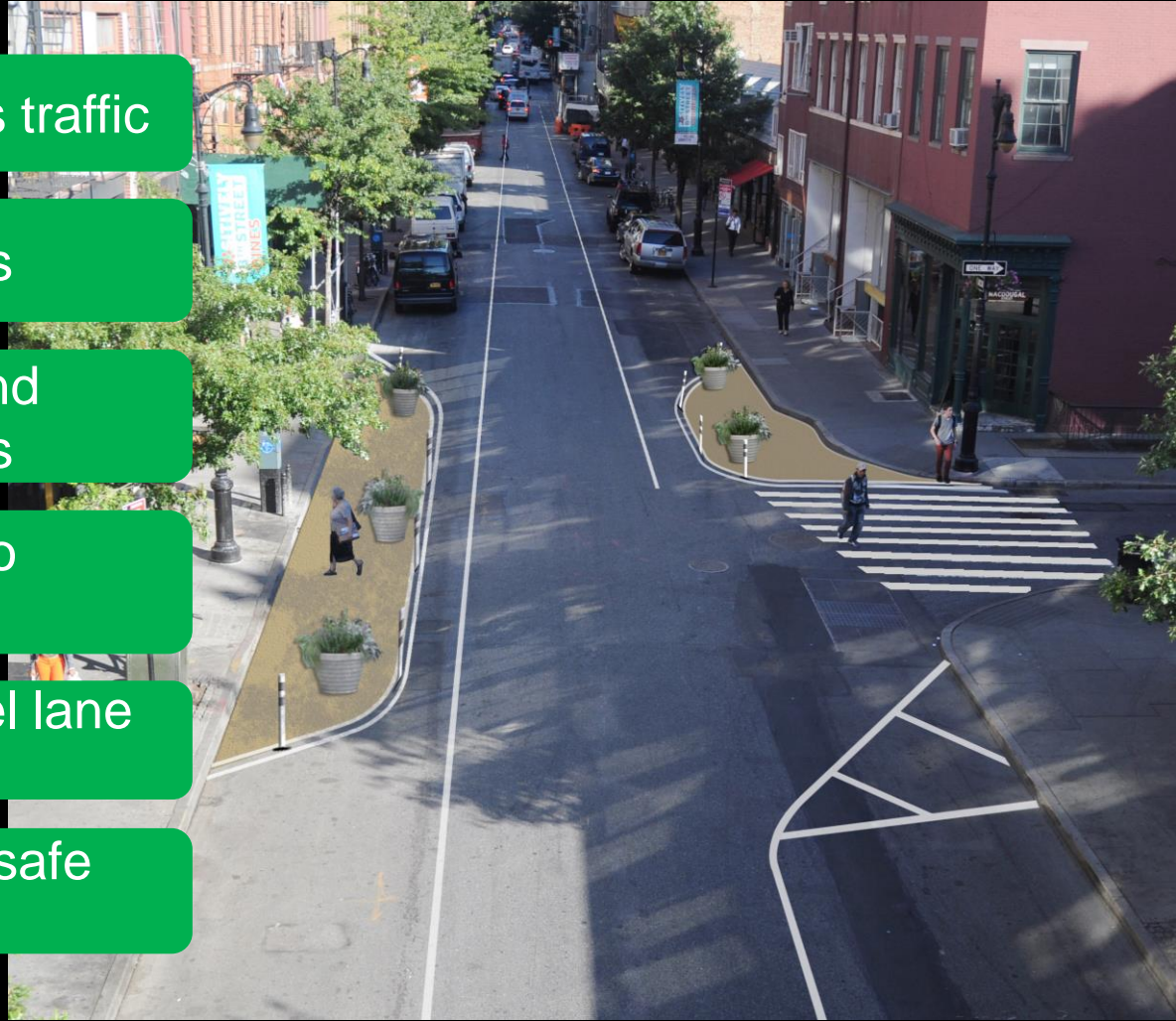
Greenleaf St

Mercer St



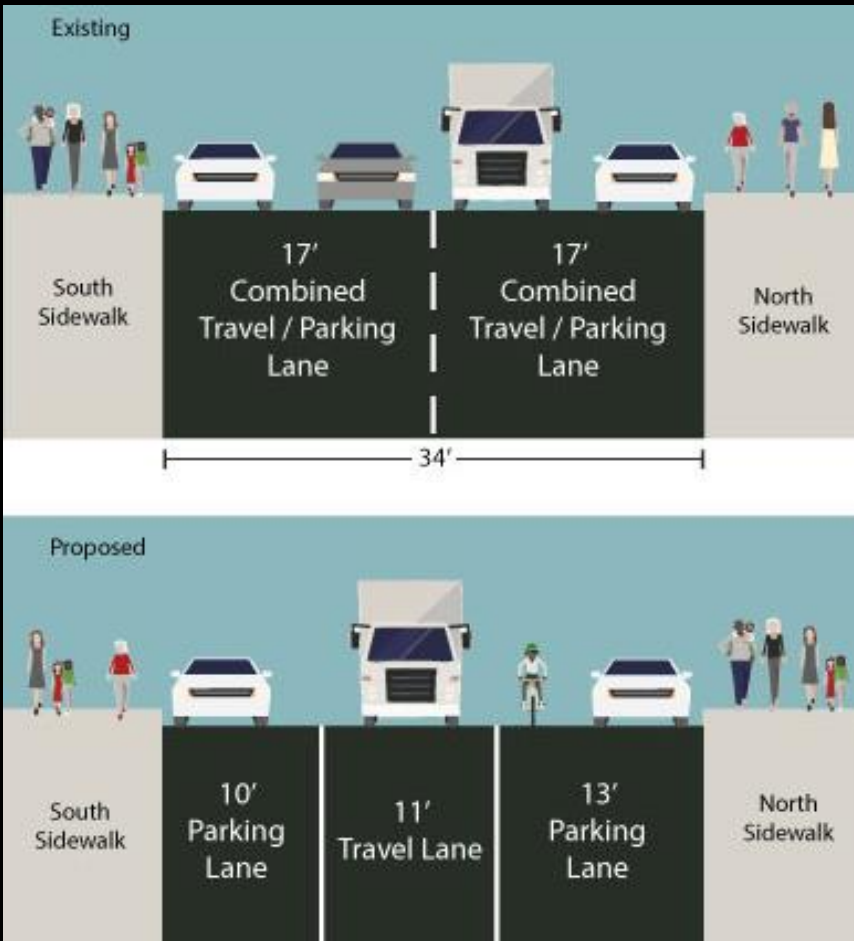
# Benefits

- Reduces speeding / calms traffic
- Safer pedestrian crossings
- Normalize intersections and shorten crossing distances
- Provides bicycle parking to support local businesses
- Provides appropriate travel lane size
- Wide curb lane allows for safe bicycle travel



# Summary

- Install painted neckdowns at MacDougal, Greene and Mercer Streets intersections plus at 6th Ave, University Pl, 5th Ave, and Broadway
- Build concrete neckdowns at 6th Ave at Greenwich Ave, and 6th Ave at W.9th St
- Create one travel lane and two wide parking lanes
- Build out Ruth Wittenberg triangle on Greenwich Ave and 6th Ave in concrete
- Program enlarged space with seating and planters with Village Alliance Partnership
- Install requested bicycle corrals and normalize bike markings on 6th Ave
- LPI's under investigation at 5<sup>th</sup> Ave, 6<sup>th</sup> Ave and Broadway





[www.nyc.gov/dot](http://www.nyc.gov/dot)

Thank  
You

# NYC DOT Bike Corrals





# Program Background

- DOT has installed 24 bike corrals city wide
- A bike corral is a row of bike racks installed in a curbside lane of a street
- Locations are identified based on requests from maintenance partners
- The maintenance partner is required to keep the site clear of debris and snow, maintain plantings, and report abandoned bicycles



Smith St and Sackett St, Brooklyn

Installed: August 2011

Maintained by: Sackett Street Block Association



82<sup>nd</sup> St & Roosevelt Ave, Queens

Installed: April 2013

Maintained by: 82<sup>nd</sup> St Partnership

# Physical Guidelines

- Must be in a curbside lane that is never used as a travel lane
- May not block crosswalks, driveways, bus stops, and utility covers
- Must be a minimum of 15' away from fire hydrants or bus stops



8<sup>th</sup> Ave & W 21<sup>st</sup> St, Manhattan  
Installed: April 2013  
Maintained by: Organic Avenue



N 11 St & Wythe St, Brooklyn  
Installed: September 2012  
Maintained by: Kinfolk Studios



# Example of a Bike Corral



Broadway & W 105<sup>th</sup> St, Manhattan  
Installed: March 2013  
Maintained by: Henry's Restaurant