

St. Nicholas Place & W. 155th St.

Intersection Safety Improvements



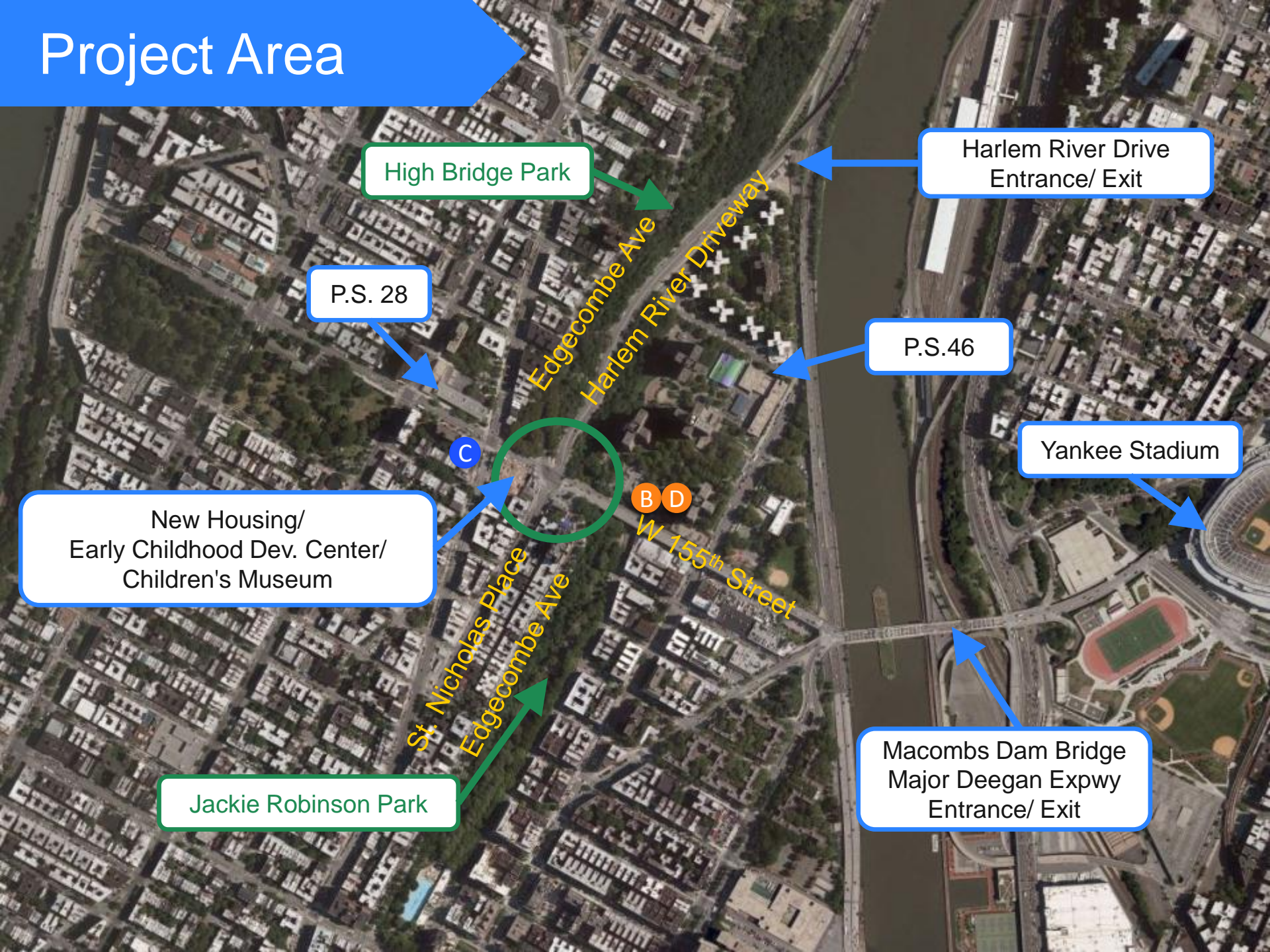
Project Area

Intersection of:
Community Boards
9,10,12

Intersection of:
W 155th Street
St. Nicholas Place
Edgecombe Ave
Harlem River
Driveway Entrance



Project Area



High Bridge Park

P.S. 28

Harlem River Drive
Entrance/ Exit

P.S. 46

Yankee Stadium

New Housing/
Early Childhood Dev. Center/
Children's Museum

C

B D

W 155th Street

Macombs Dam Bridge
Major Deegan Expwy
Entrance/ Exit

Jackie Robinson Park

Background

Community Requests

- Former Council Member Jackson requested pedestrian safety improvements
- NYPD 30th Precinct requested DOT safety investigation
- Support from NYPD 30th and 33rd Precincts for proposed DOT improvements

Safety Issues

- Long crosswalks
- Pedestrian crashes
- Multi-leg intersection with multiple conflicting movements

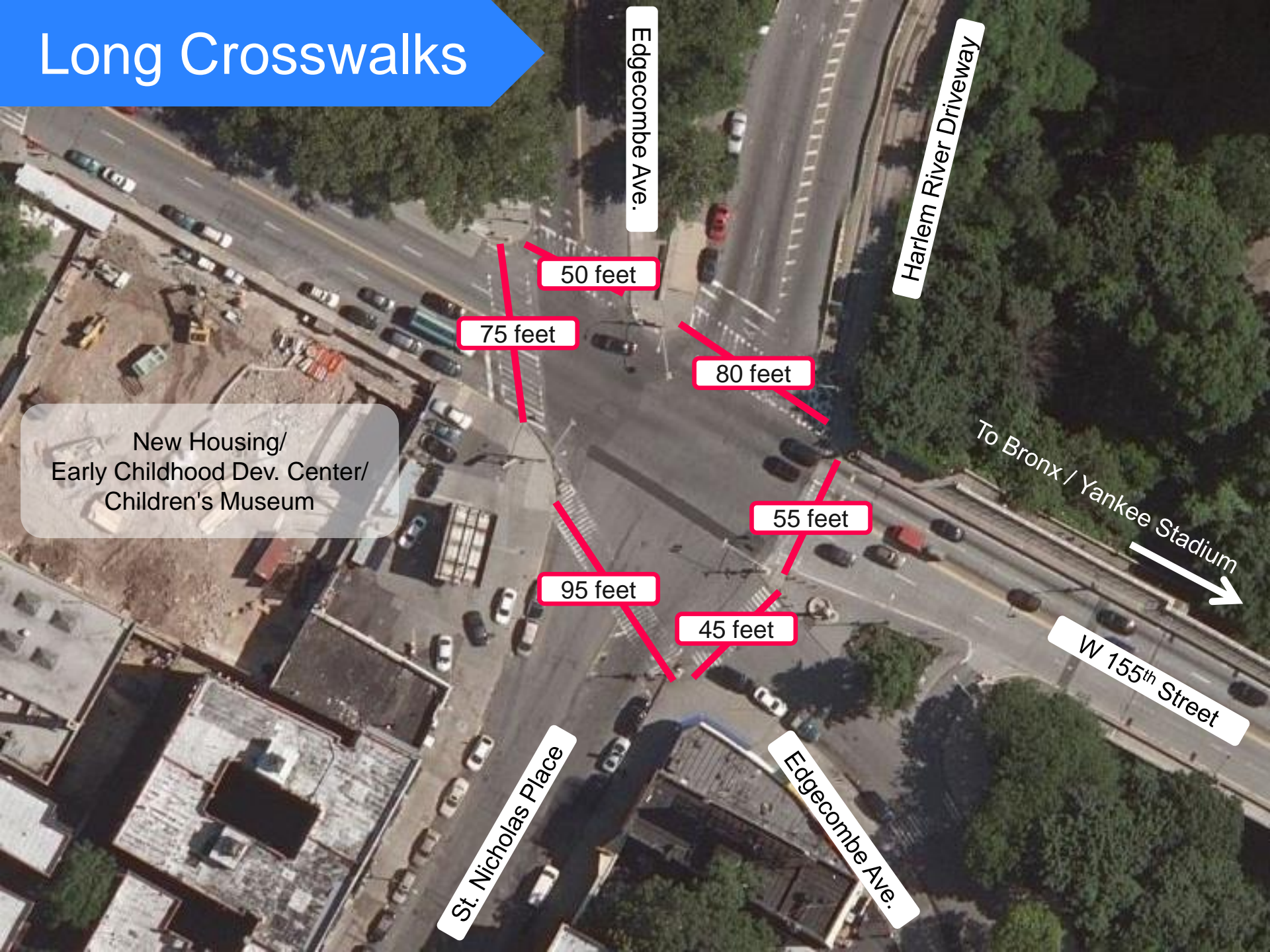


Background

Public Meetings

- 12/06/12 – 1st site walk through and workshop with community members
- 8/13/13 – 2nd site walk through and workshop with community members
- 5/21/14 – Community forum and presentation
- 6/02/14 – Presentation to CB12 committee
- 6/05/14 – Presentation to CB9 committee
- 6/11/14 – Presentation to CB10 committee

Long Crosswalks



Edgecombe Ave.

Harlem River Driveway

50 feet

75 feet

80 feet

New Housing/
Early Childhood Dev. Center/
Children's Museum

To Bronx / Yankee Stadium

55 feet

95 feet

45 feet

W 155th Street

St. Nicholas Place

Edgecombe Ave.

Vehicle Crashes/Injuries

Ranks in top
one percent
of Manhattan
intersections

43 Motor
Vehicle
Crashes
(non ped)

St Nicholas Pl at W 155th St Injury Summary, 2008-2012 (5 years)

	Total Injuries	Severe Injuries
Pedestrian	12	3
Bicyclist	1	0
Motor Vehicle Occupant	59	5
Total	72	8

Edgecombe Ave.

Harlem River Driveway

To Bronx / Yankee Stadium
→

W 155th Street

St. Nicholas Pl

Edgecombe Ave.

9

15

1

8

7

3

Pedestrian Crashes

Ranks in top
one percent
of Manhattan
intersections

38% of pedestrian
crashes involved
pedestrians
crossing with the
signal

St Nicholas Pl at W 155th St Injury Summary, 2008-2012 (5 years)

	Total Injuries	Severe Injuries
Pedestrian	12	3
Bicyclist	1	0
Motor Vehicle Occupant	59	5
Total	72	8

Edgecombe Ave.

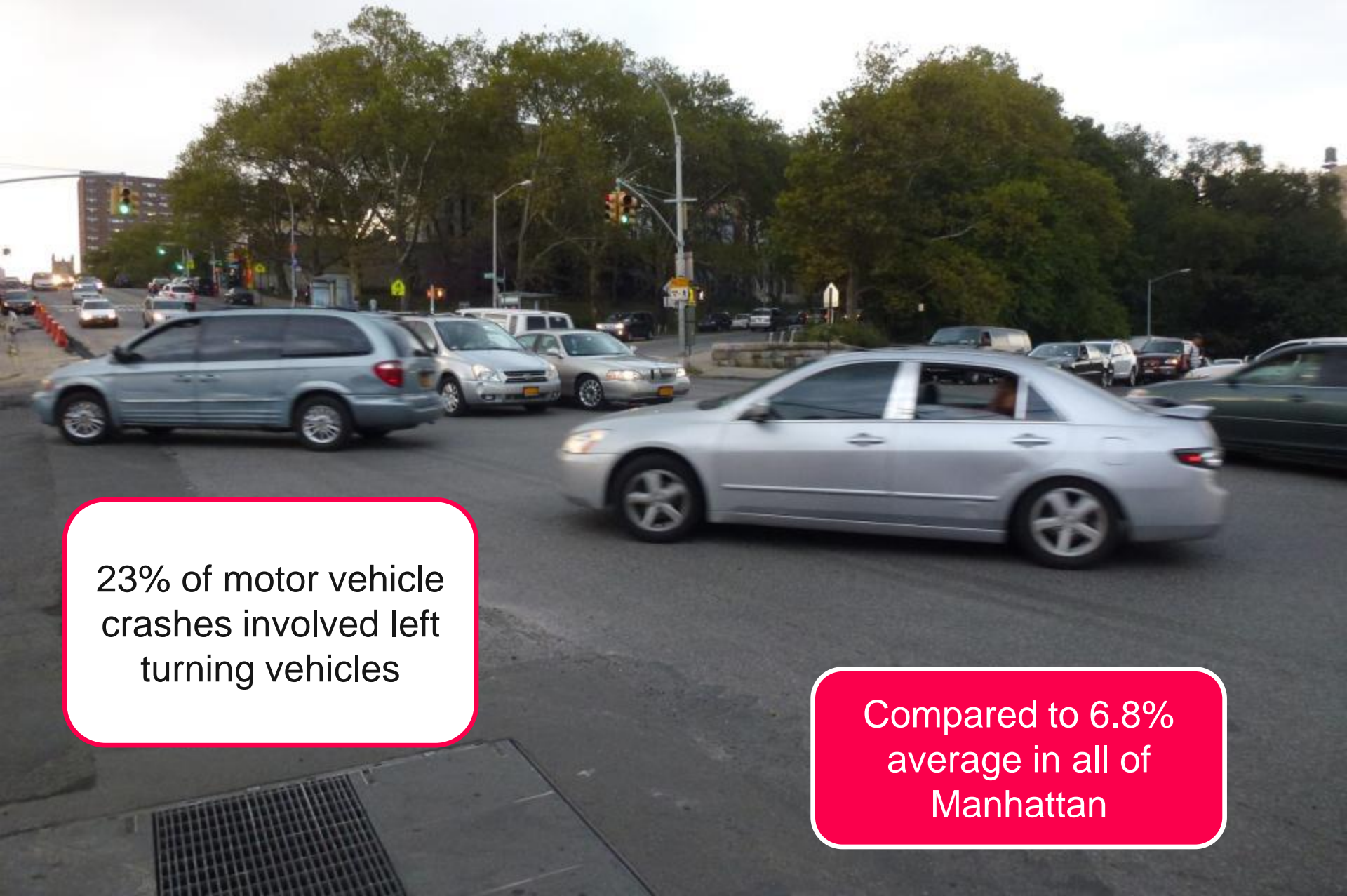
Harlem River Driveway

To Bronx / Yankee Stadium
W 155th Street

St. Nicholas Pl

Edgecombe Ave.

Turning Conflicts



23% of motor vehicle
crashes involved left
turning vehicles

Compared to 6.8%
average in all of
Manhattan

Turning Conflicts

W.155th green phase

41
Seconds

Edgecombe Ave.

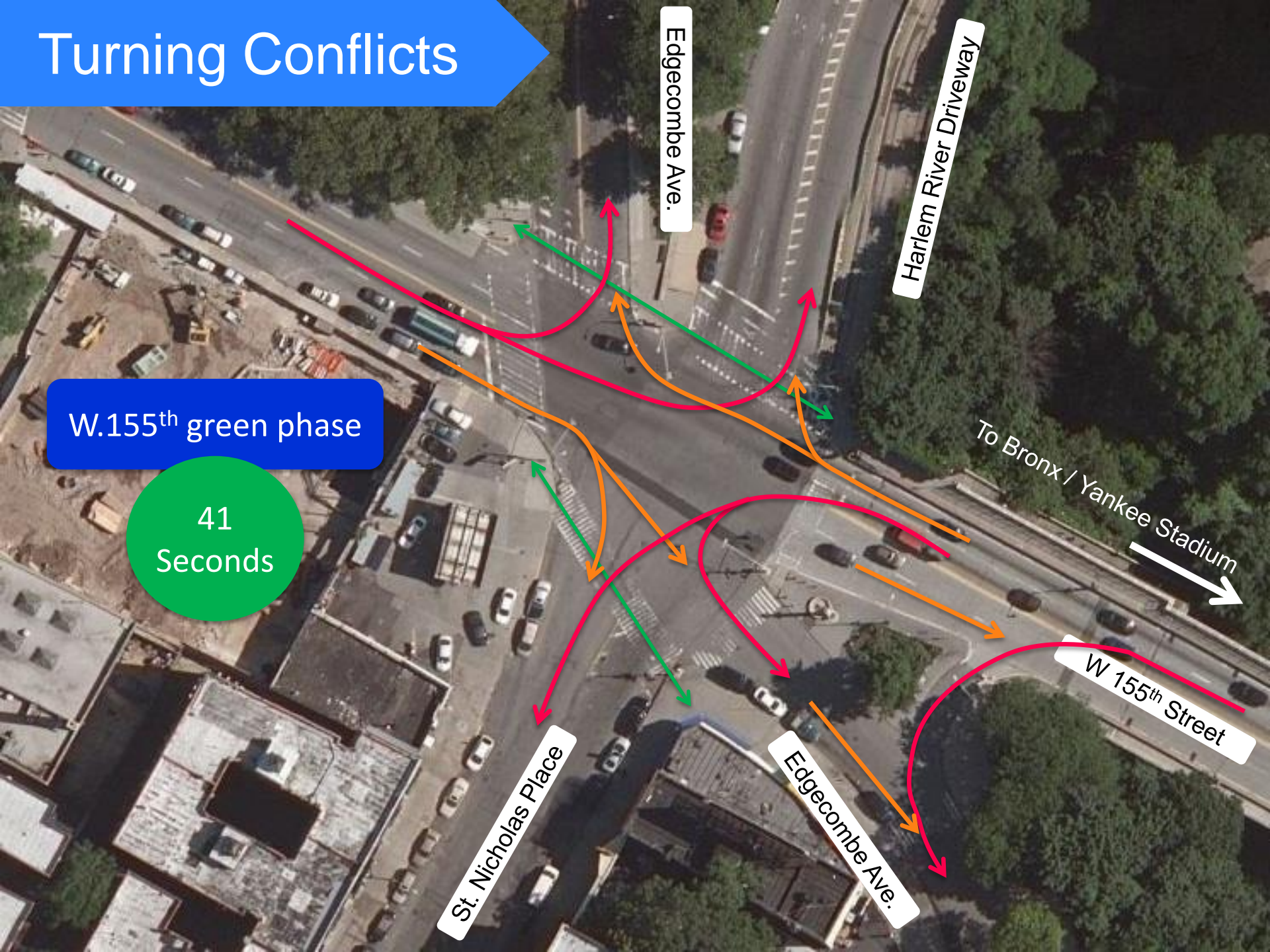
Harlem River Driveway

To Bronx / Yankee Stadium

W 155th Street

Edgecombe Ave.

St. Nicholas Place



Turning Conflicts

St. Nicholas Pl/
Harlem River Driveway
green phase

28
Seconds

Edgecombe Ave.

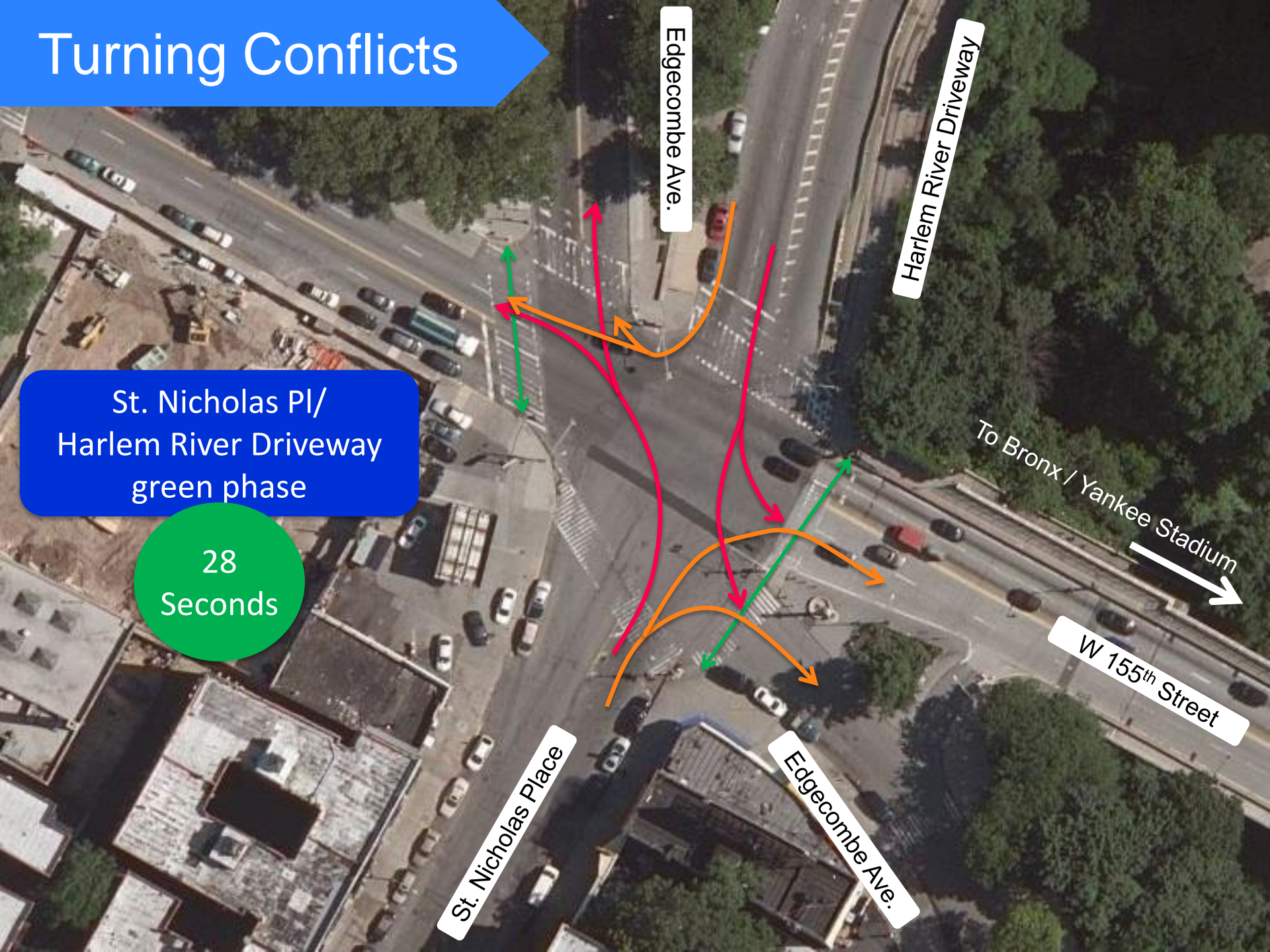
Harlem River Driveway

To Bronx / Yankee Stadium

W 155th Street

St. Nicholas Place

Edgecombe Ave.



Yielding Conflicts



Rapid Response Toolkit

- Pavement markings
- Turn Restrictions
- Painted surfaces
- Concrete Islands & Island Extensions
- Flexible Delineators



Existing Conditions

Edgecombe Ave

W 155th Street

Harlem River Driveway

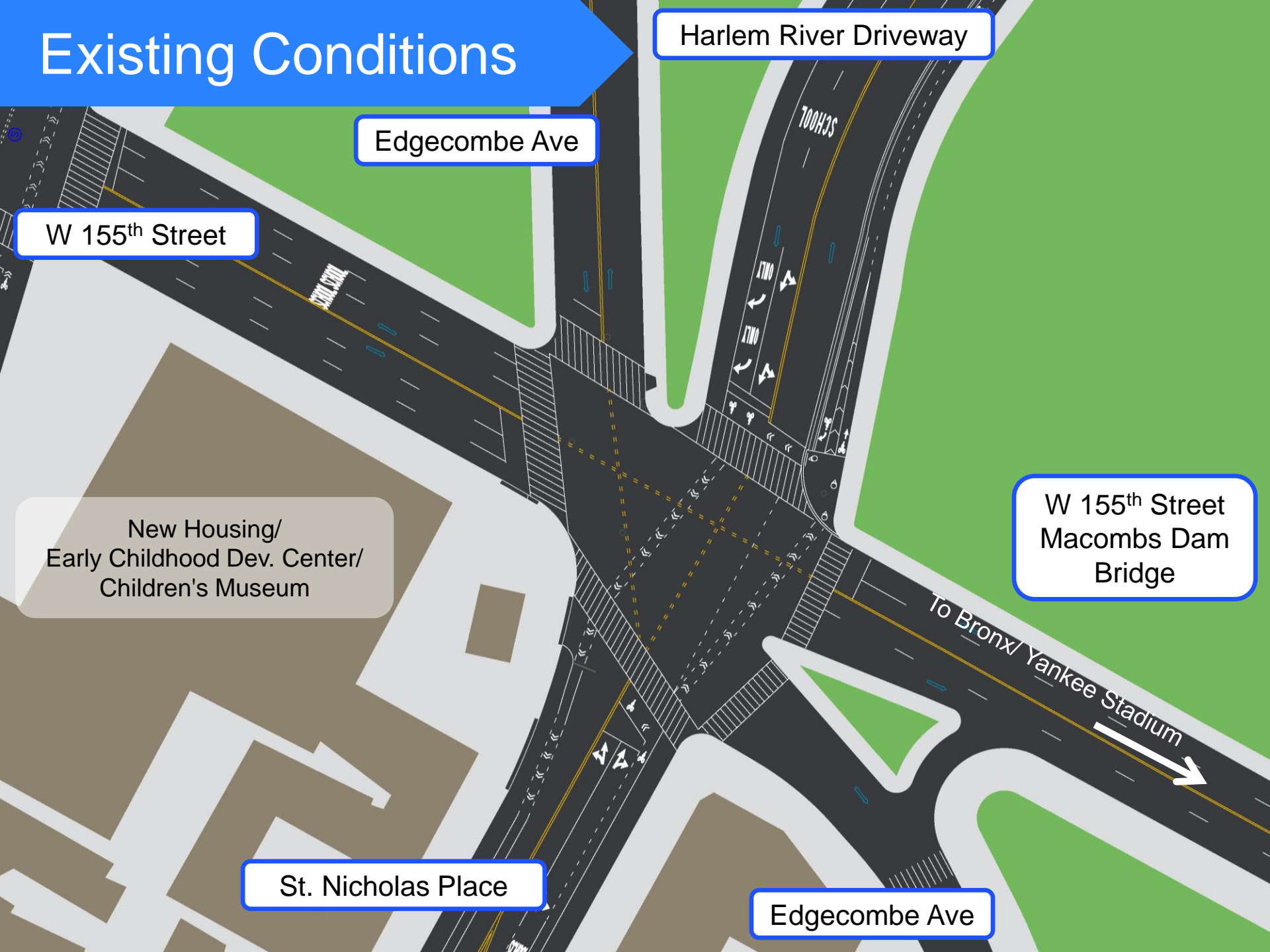
New Housing/
Early Childhood Dev. Center/
Children's Museum

W 155th Street
Macombs Dam
Bridge

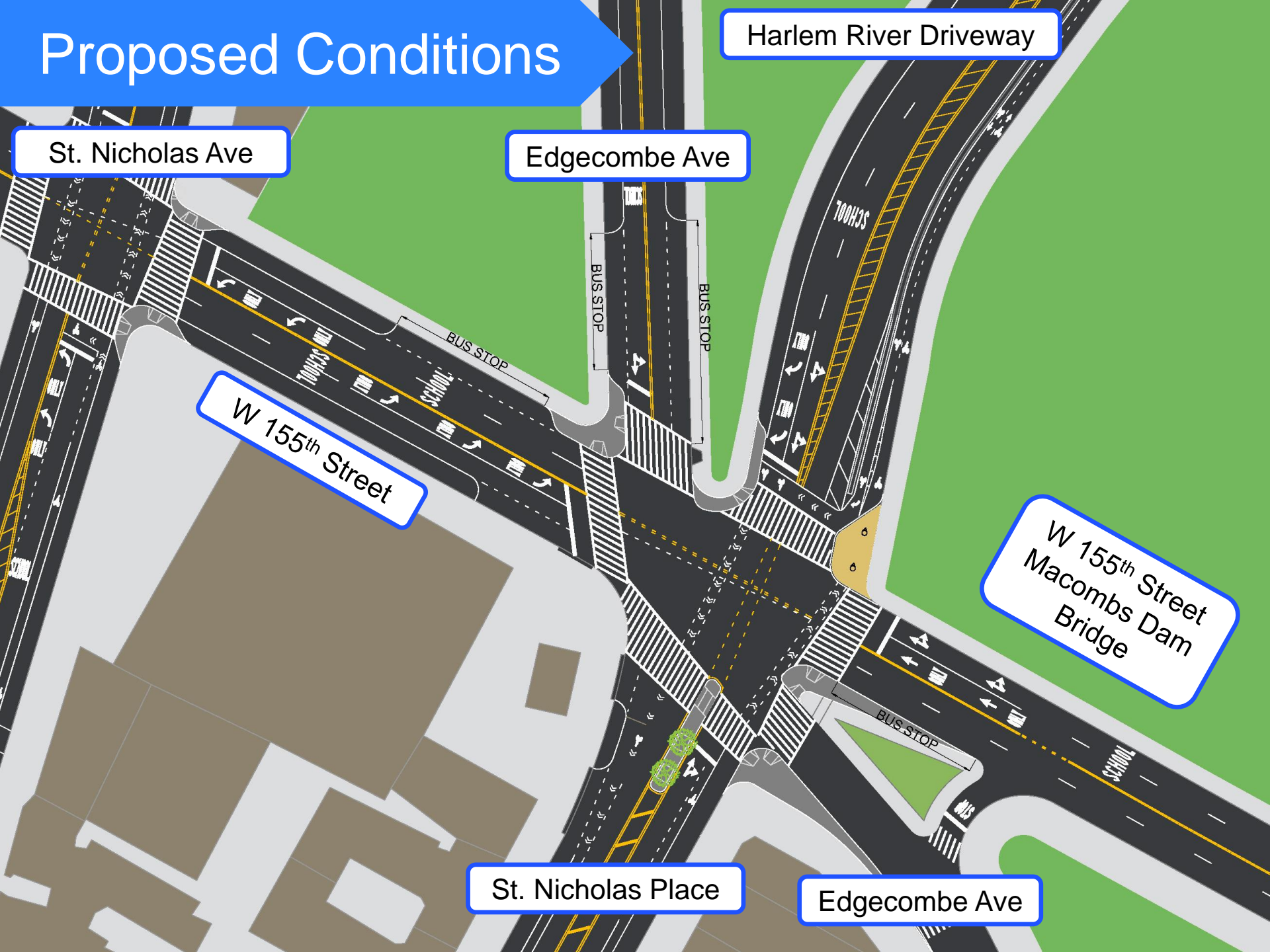
St. Nicholas Place

Edgecombe Ave

To Bronx/ Yankee Stadium



Proposed Conditions



Harlem River Driveway

St. Nicholas Ave

Edgcombe Ave

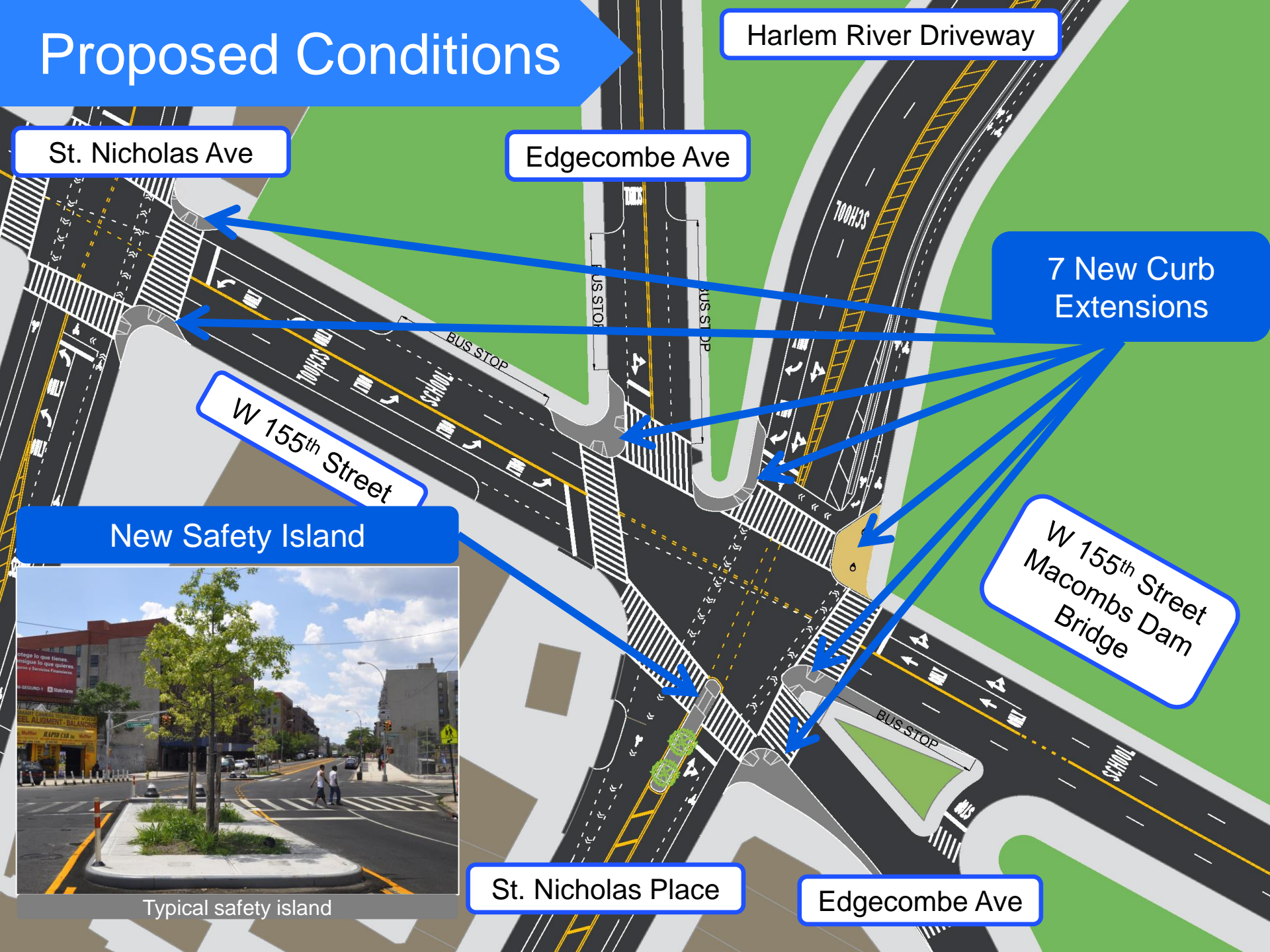
W 155th Street

W 155th Street
Macombs Dam
Bridge

St. Nicholas Place

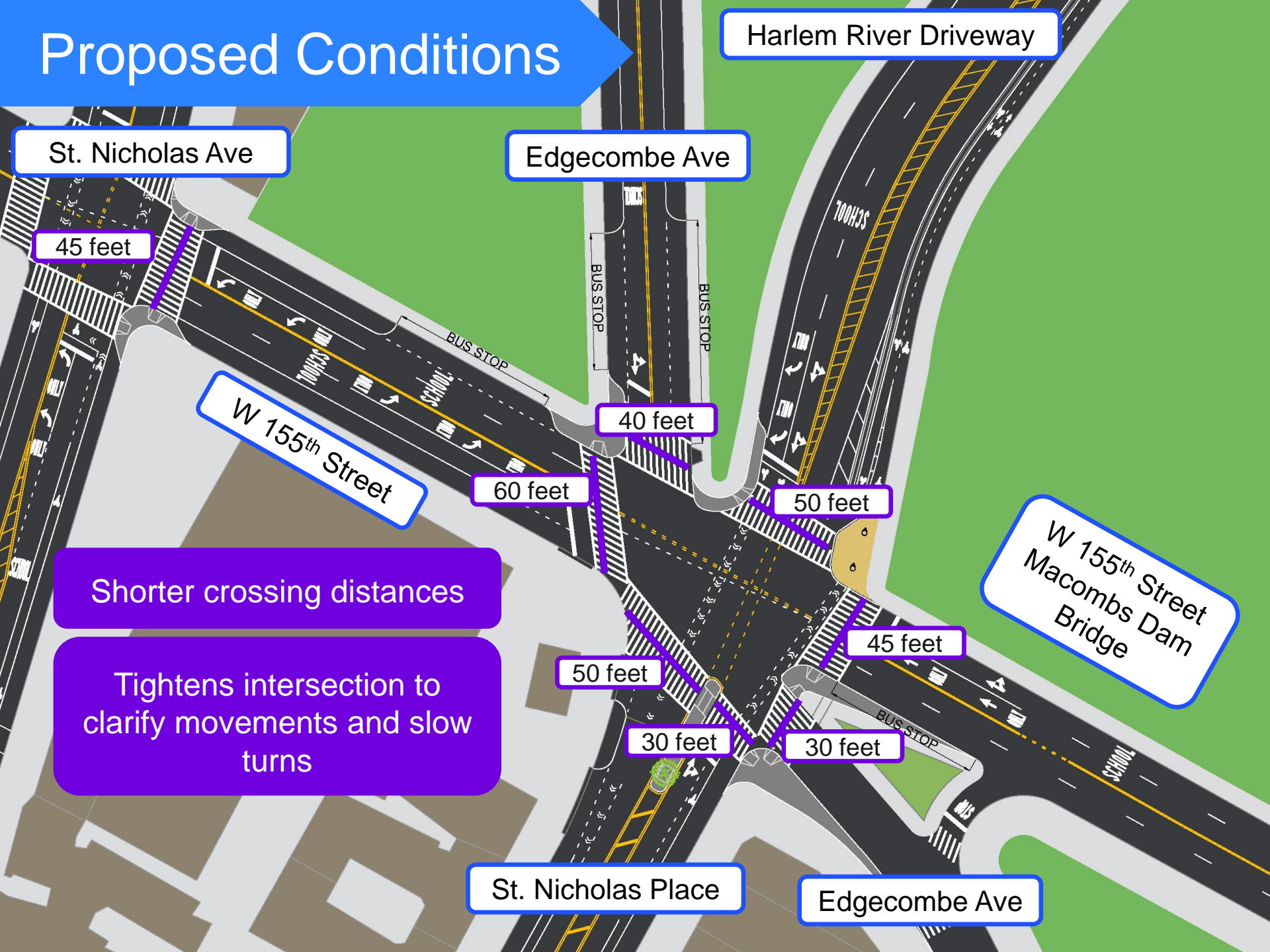
Edgcombe Ave

Proposed Conditions



Typical safety island

Proposed Conditions



Harlem River Driveway

St. Nicholas Ave

Edgcombe Ave

45 feet

W 155th Street

40 feet

60 feet

50 feet

Shorter crossing distances

Tightens intersection to clarify movements and slow turns

W 155th Street
Macombs Dam
Bridge

45 feet

50 feet

30 feet

30 feet

St. Nicholas Place

Edgcombe Ave

Proposed Turn Restrictions

Harlem River Driveway

St. Nicholas Ave

Edgecombe Ave

W 155th Street

W 155th Street
Macombs Dam
Bridge

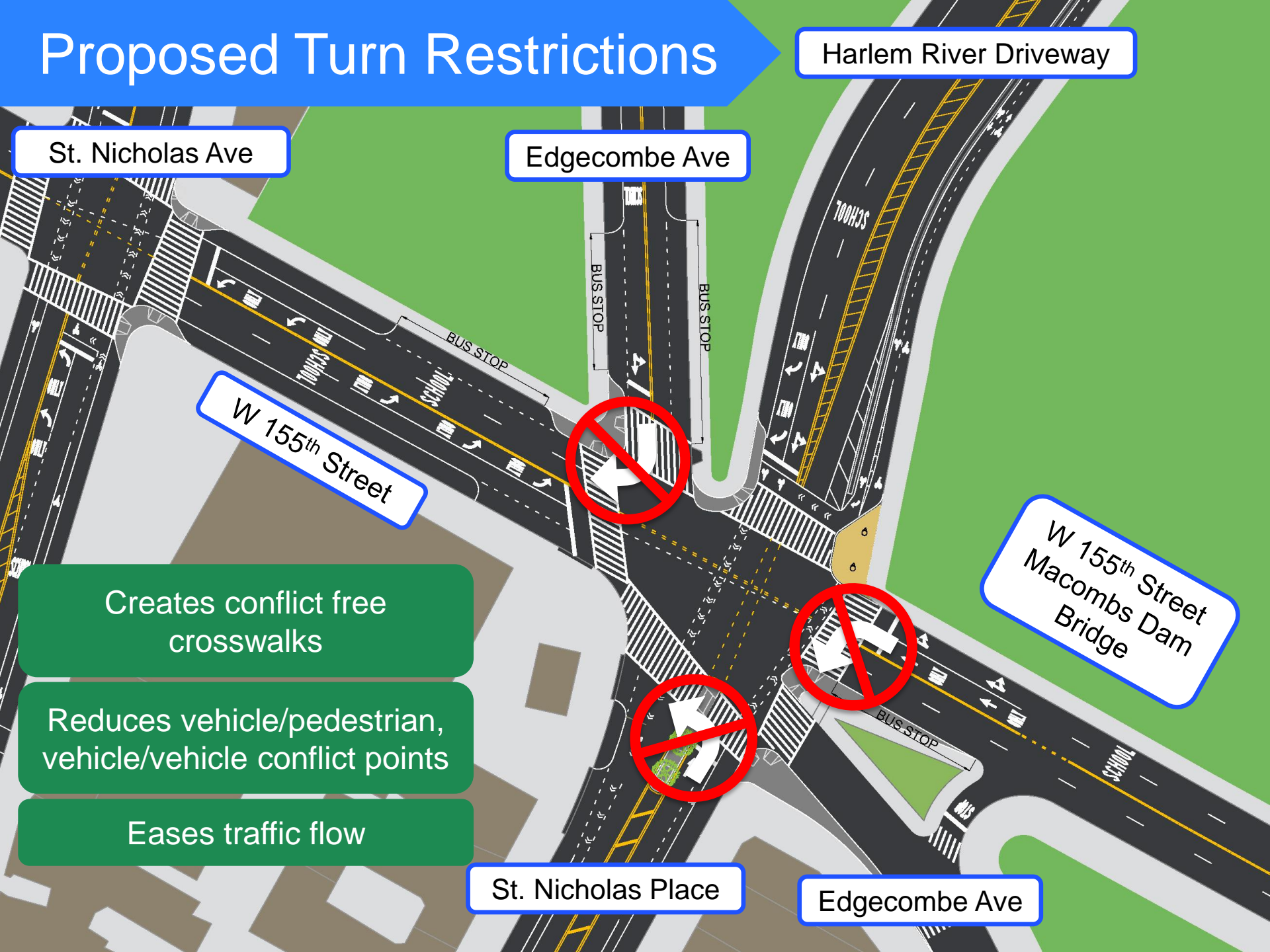
Creates conflict free
crosswalks

Reduces vehicle/pedestrian,
vehicle/vehicle conflict points

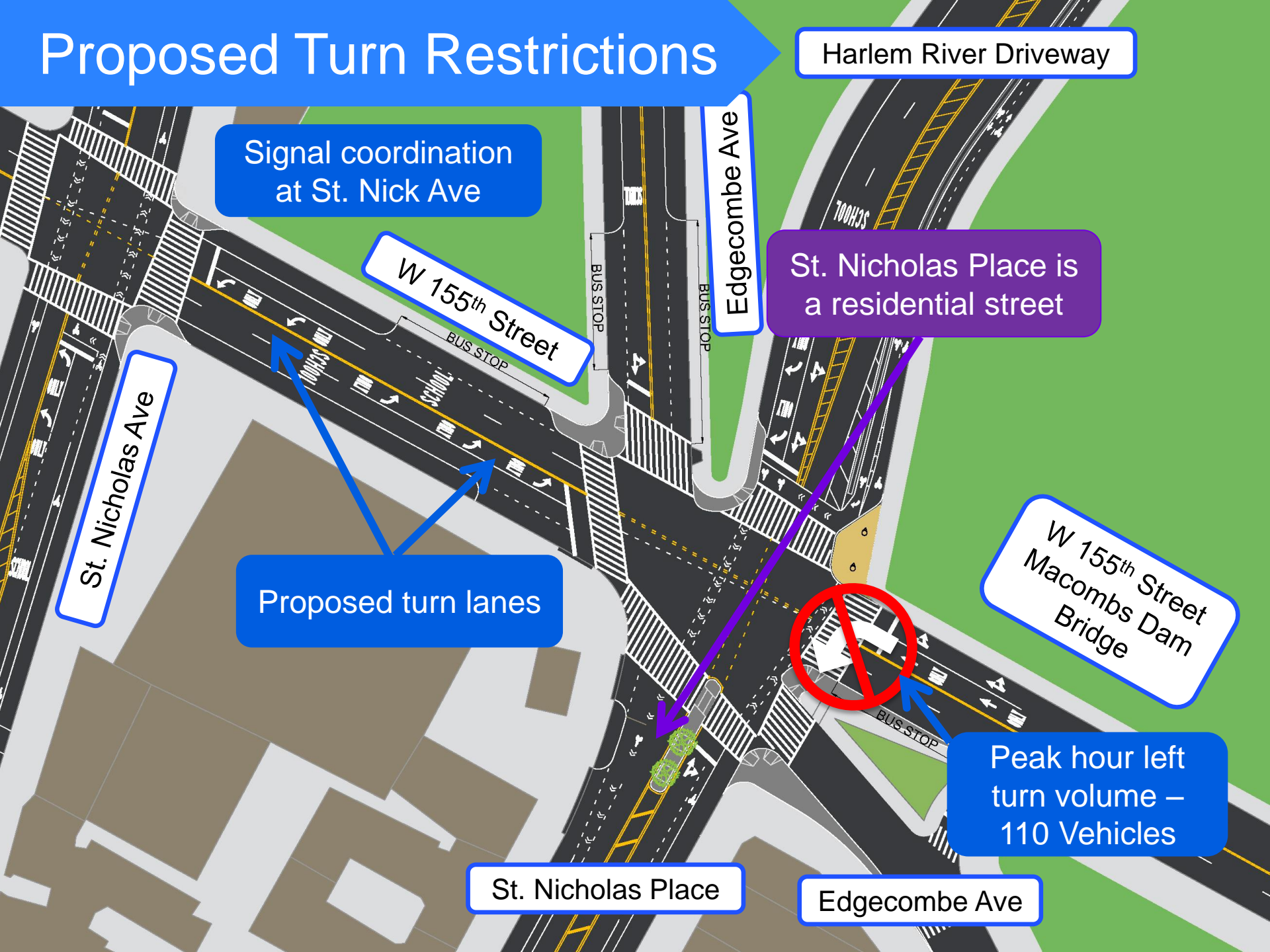
Eases traffic flow

St. Nicholas Place

Edgecombe Ave



Proposed Turn Restrictions



Proposed Turn Restrictions

Harlem River Driveway

St. Nicholas Ave

Edgecombe Ave

W 155th Street

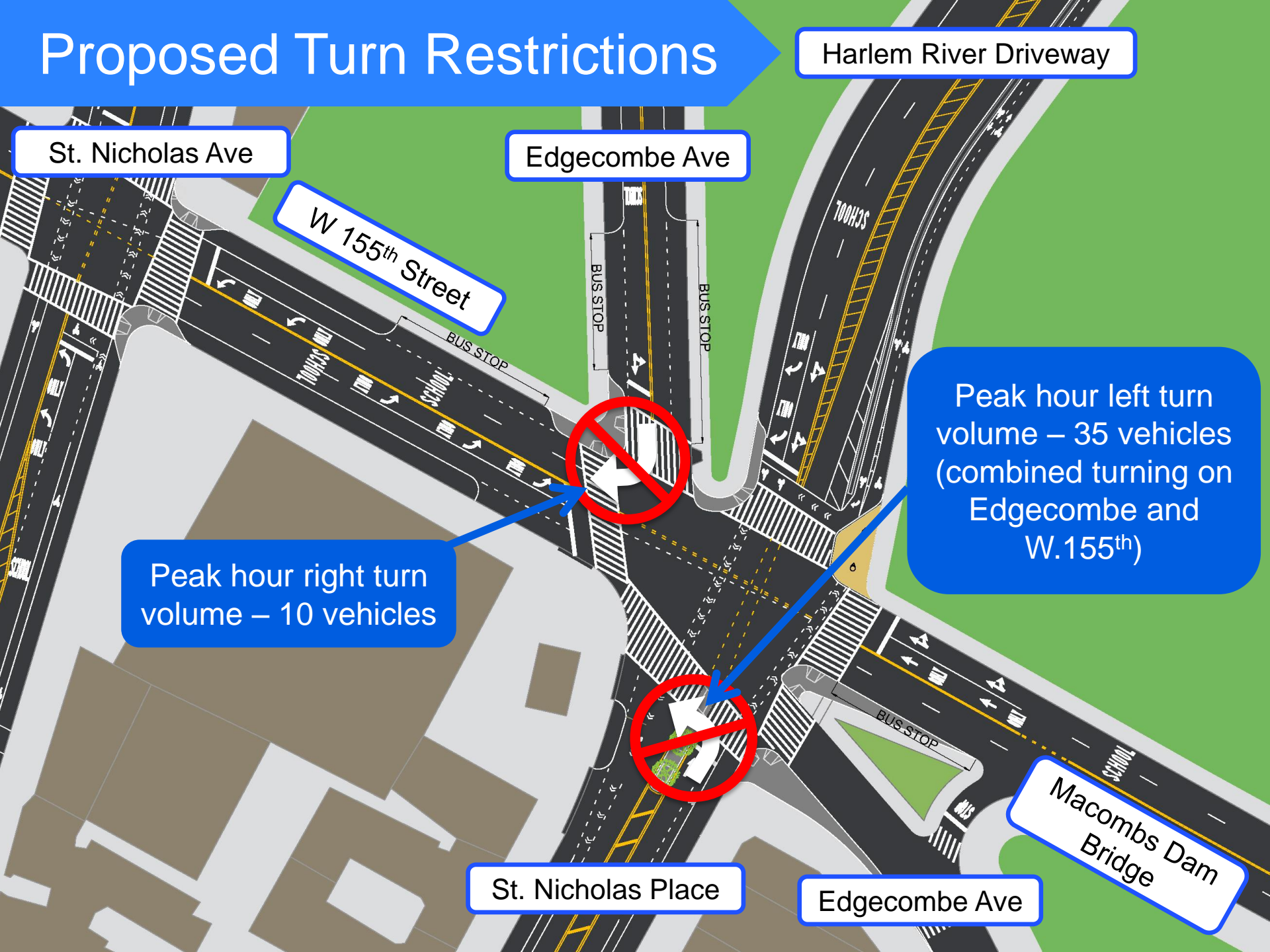
Peak hour right turn
volume – 10 vehicles

Peak hour left turn
volume – 35 vehicles
(combined turning on
Edgecombe and
W.155th)

St. Nicholas Place

Edgecombe Ave

Macombs Dam
Bridge



Proposed Turn Restrictions

Harlem River Driveway

St. Nicholas Ave

Edgecombe Ave

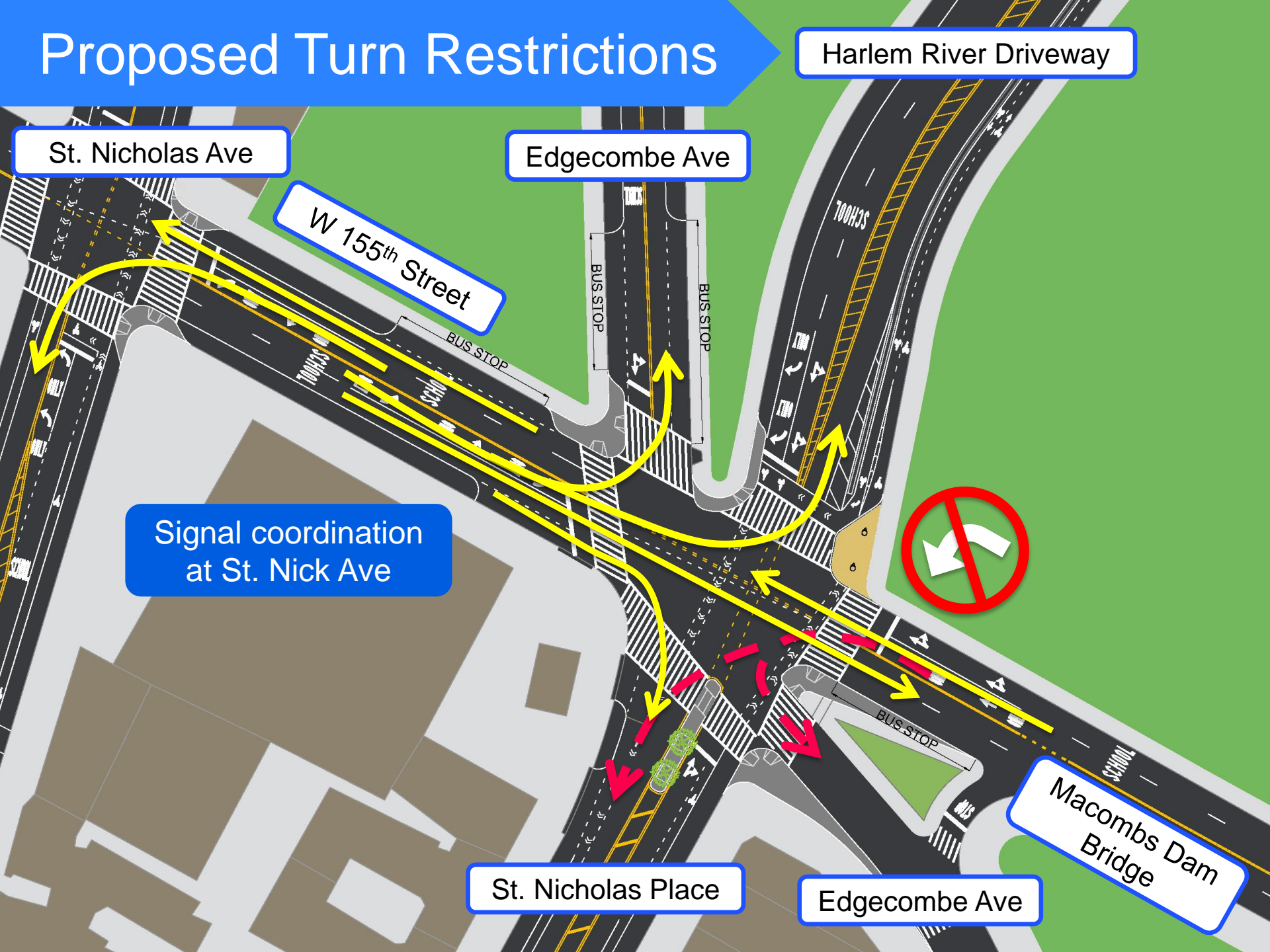
W 155th Street

Signal coordination
at St. Nick Ave

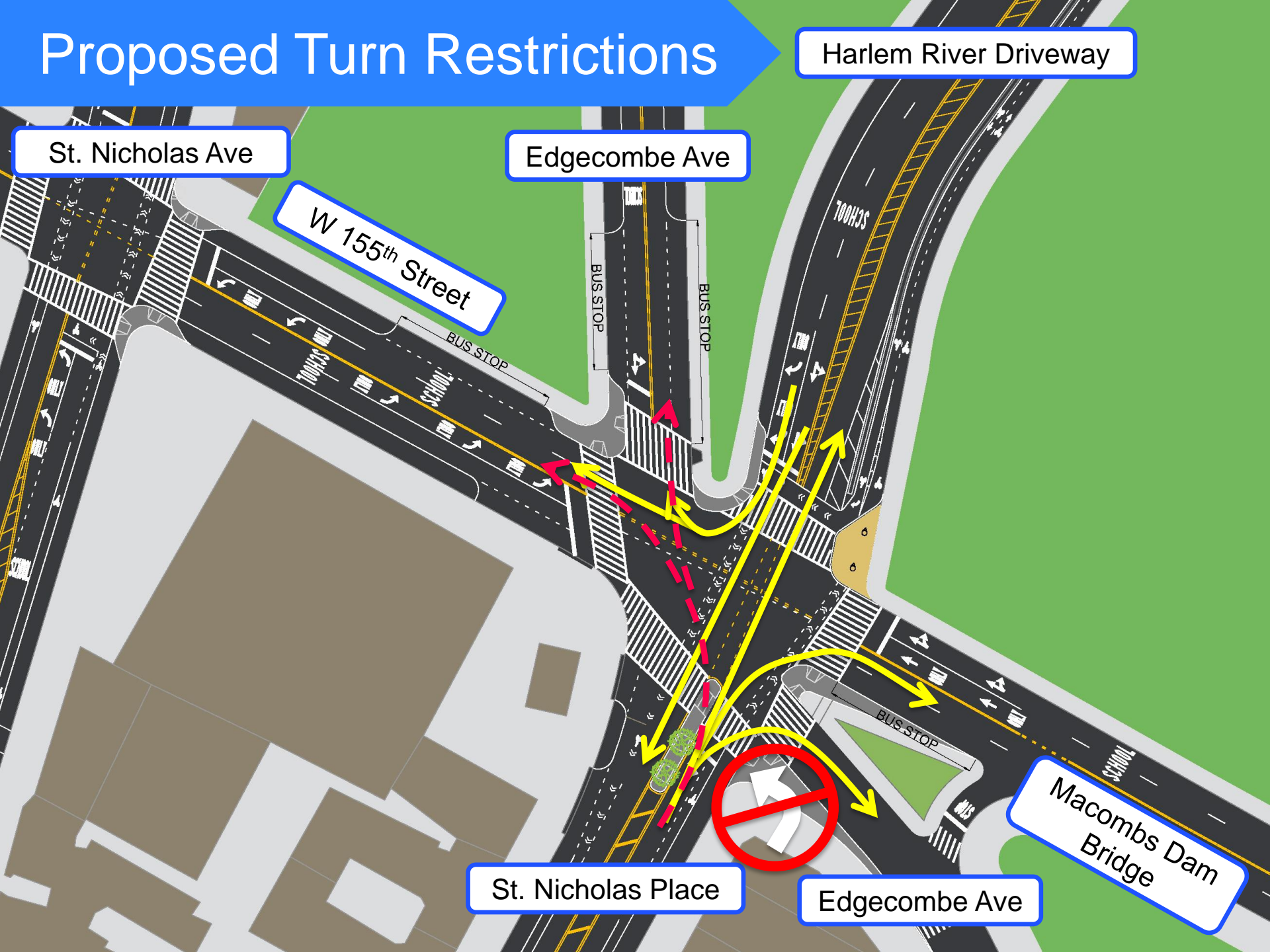
St. Nicholas Place

Edgecombe Ave

Macombs Dam
Bridge



Proposed Turn Restrictions



St. Nicholas Ave

Edgecombe Ave

Harlem River Driveway

W 155th Street

St. Nicholas Place

Edgecombe Ave

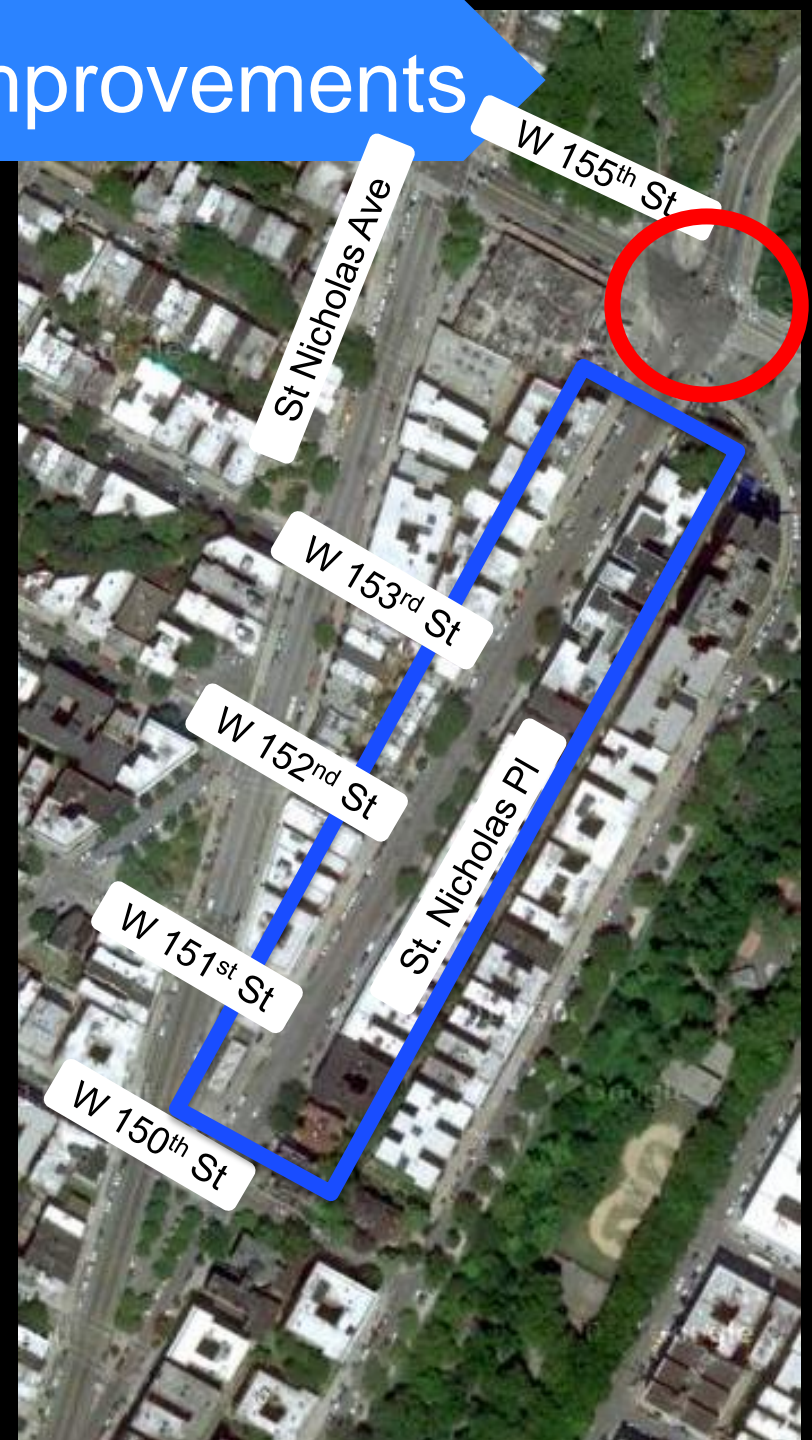
Macombs Dam Bridge

St Nicholas PI Corridor Improvements

75% of pedestrian crashes involved pedestrians crossing at intersections without stop signs or signals

St Nicholas PI: W 150th St to at W 153rd St
Injury Summary, 2008-2012 (5 years)

	Total Injuries	Severe Injuries	Fatalities
Pedestrian	4	0	0
Bicyclist	2	0	0
Motor Vehicle Occupant	29	6	1
Total	35	6	1



Existing Conditions

Lack of pedestrian crossings

Uninterrupted corridor encourages speeding



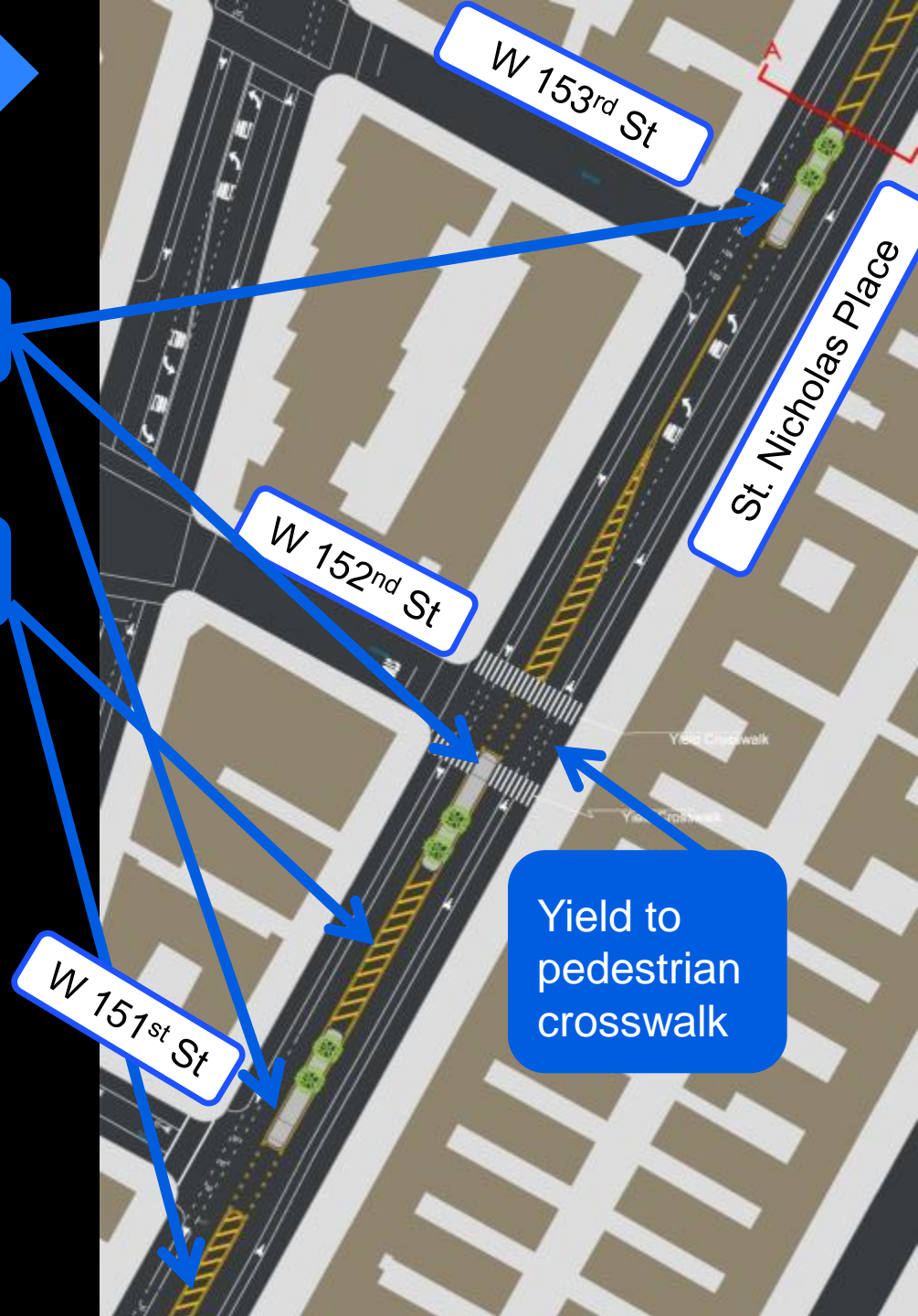
Proposed Conditions

New pedestrian islands

Speed humps installed Summer 2014



Yield to pedestrian crosswalk in the Bronx



Plan Summary

Proposed Changes to the Intersection of St. Nicholas Pl and W 155th St

1. Add new pedestrian safety island on St. Nicholas Pl at W.155th St
2. Install five neckdowns at W.155th & St. Nicholas Pl
3. Install two neckdowns at W.155th & St. Nicholas Ave
4. Add left turn lane on W.155th St (E/B)
5. Modify signal timing to process W.155th vehicles through St. Nicholas Pl and St. Nicholas Ave
6. Ban southbound lefts off of W 155th St
7. Ban southbound right from Edgecombe
8. Ban westbound lefts off of W 155th St

Proposed Changes to St. Nicholas Pl

1. Add pedestrian islands at 151st St, 152nd St and 153rd St
2. Add yield crosswalk on St. Nicholas Pl at W 152nd St

nyc.gov/dot

**Thank
You**