

# Franklin Avenue

## Transportation Improvements

2014





# Background

- 2011 Crow Hill Community Association request for bike lane
- 2013 letter from Assembly Member Walter T. Mosley requesting transportation improvements on Franklin Ave
- April 2014: DOT hosted a joint CB8/CB9 workshop to gather community input and guide solutions
- Project goals: Increase safety, access and connectivity for pedestrians, cyclists, bus riders and motorists



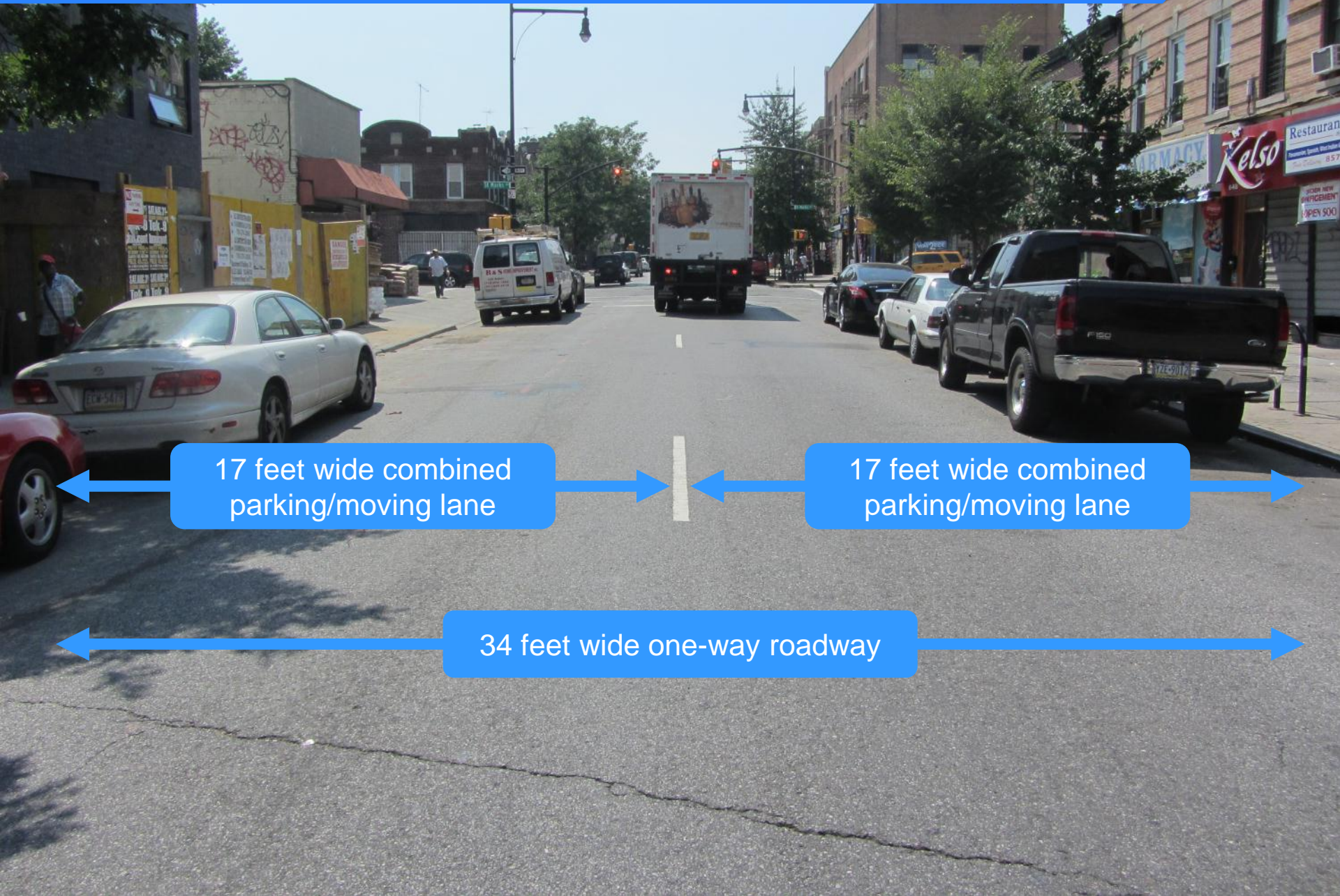
April 2, 2014 community workshop

# Project Map





# Existing Conditions on Franklin Ave



17 feet wide combined  
parking/moving lane

17 feet wide combined  
parking/moving lane

34 feet wide one-way roadway

# April 2014 Community Workshop

- DOT hosted a joint CB8/CB9 workshop to gather community input and guide solutions
- 35 attendees, mix of roadway users
  - Residents and business owners
  - Pedestrians, motorists, bus riders and bicyclists
- Map exercise/discussion
  - Identified transportation issues
  - Identified problem locations



Workshop flyer

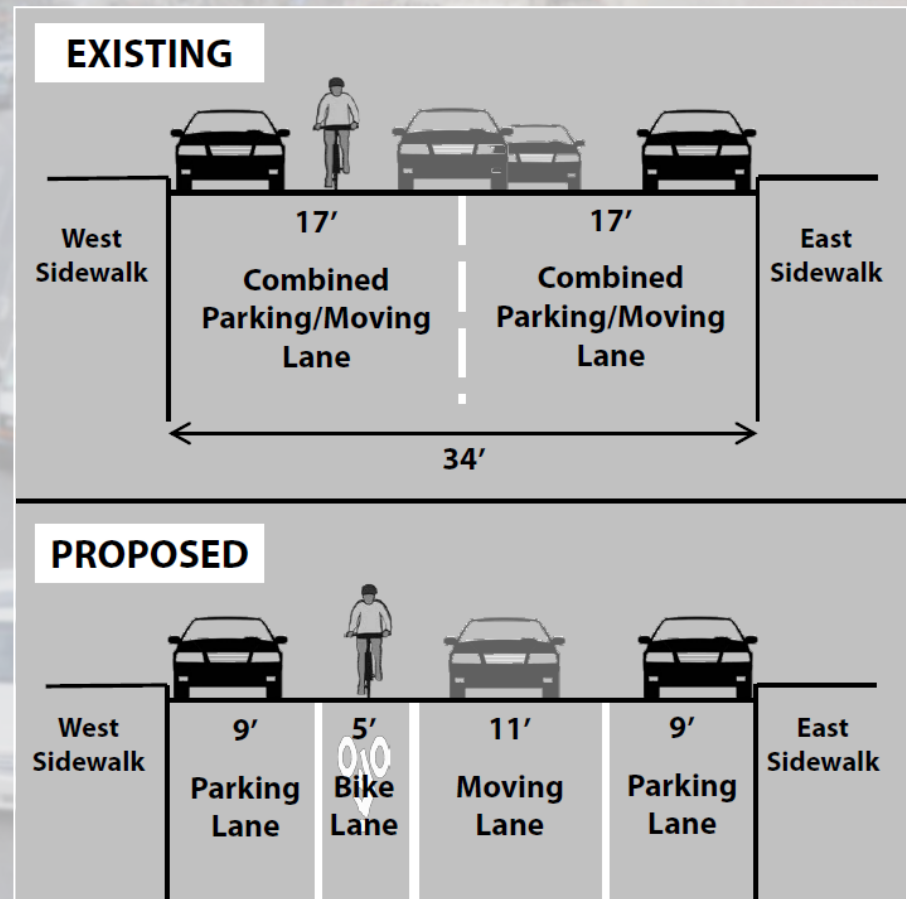


# April 2014 Community Workshop

- 4 groups identified 27 unique issues
- 7 issues were identified by at least 3 of the 4 groups as “main issues”
  - Congestion
  - Jaywalking/long signal cycles
  - Narrow travel lanes
  - Hostile cycling environment
  - Atlantic Ave pedestrian crossing
  - Double parking & loading
  - Speeding

# Summary of Proposal

- Improve signal timing and traffic flow
- Upgrade lane widths
- Install concrete pedestrian islands on Atlantic Avenue
- Parking regulations changes





# Community Issue: Congestion

Franklin Ave approaching Eastern Pkwy

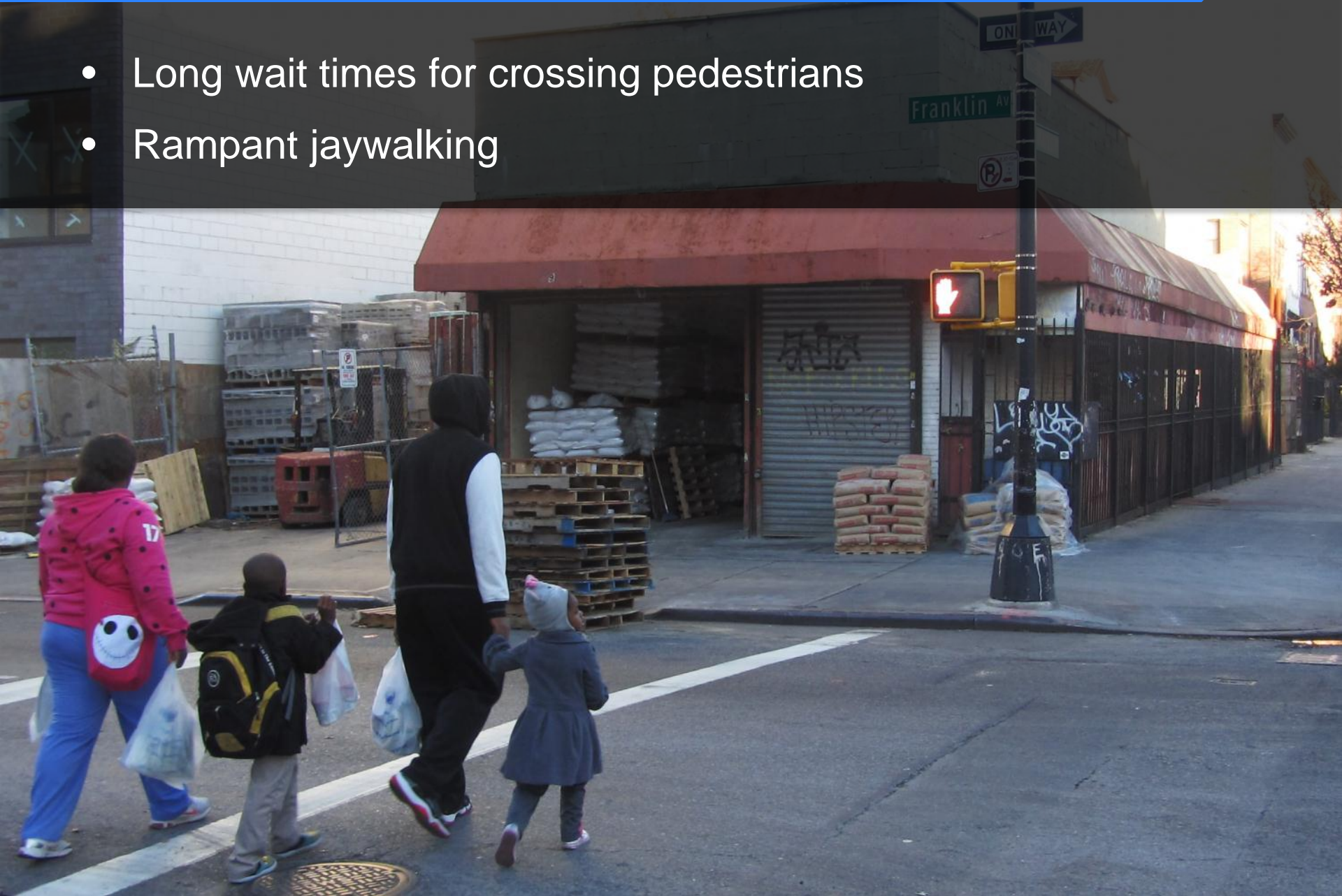


- Poor signal coordination
  - Signal cycles vary
  - Green cycles are not properly synced



# Community Issue: Jaywalking/Long Signal Cycles

- Long wait times for crossing pedestrians
- Rampant jaywalking



# Proposed Enhancement: Signal Timing

- Standardize all signal cycle lengths to 60 seconds, favoring Franklin Ave
- Coordinate green phases along Franklin Ave
- Add 5 seconds of green time to southbound Franklin Ave approaching Atlantic Ave
- Benefits:
  - Reduce congestion/increase vehicular flow
  - Minimize pedestrian wait time



# Community Issue: Narrow Travel Lanes

- Small width of travel lanes makes driving uncomfortable
- Vehicles often drive in the middle of the street straddling both travel lanes
- Motorist behavior is unpredictable





# Related Issue: Narrow Parking Lanes



- Very little space between parked and moving vehicles
- Entering/exiting parked vehicles is uncomfortable and dangerous



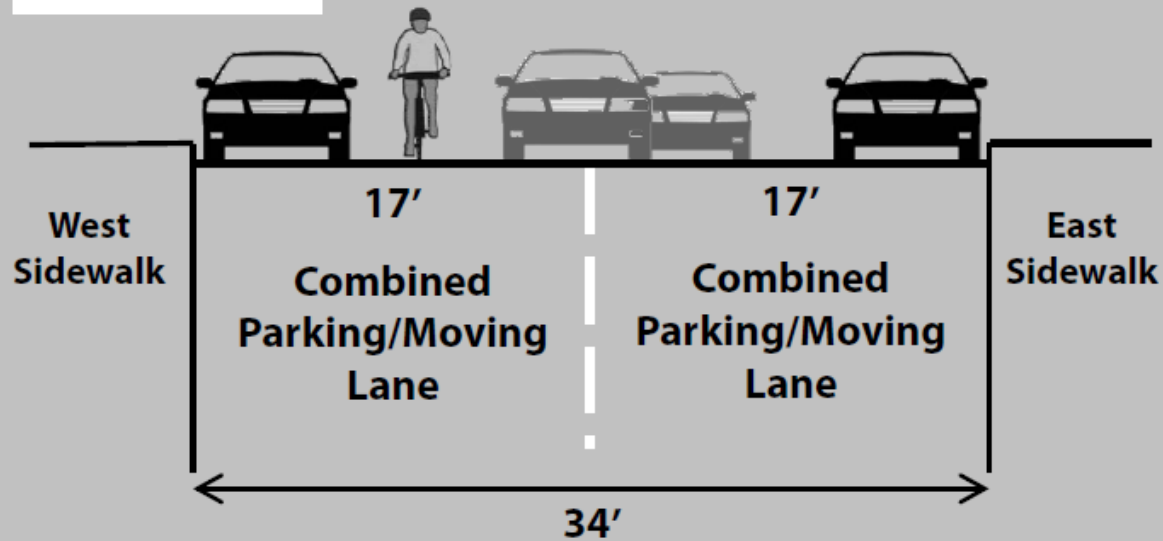
# Community Issue: Hostile Bicycling Environment

- Narrow travel lanes make passing difficult
- Narrow parking lanes make risk of “dooring” great

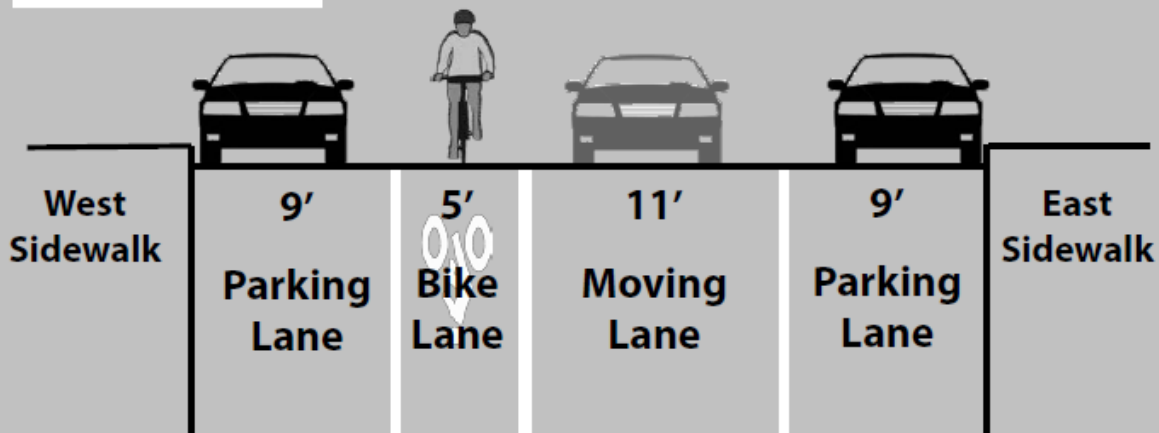


# Proposed Enhancement: Markings

## EXISTING



## PROPOSED





# Proposed Enhancement: Markings

Dean St, Brooklyn



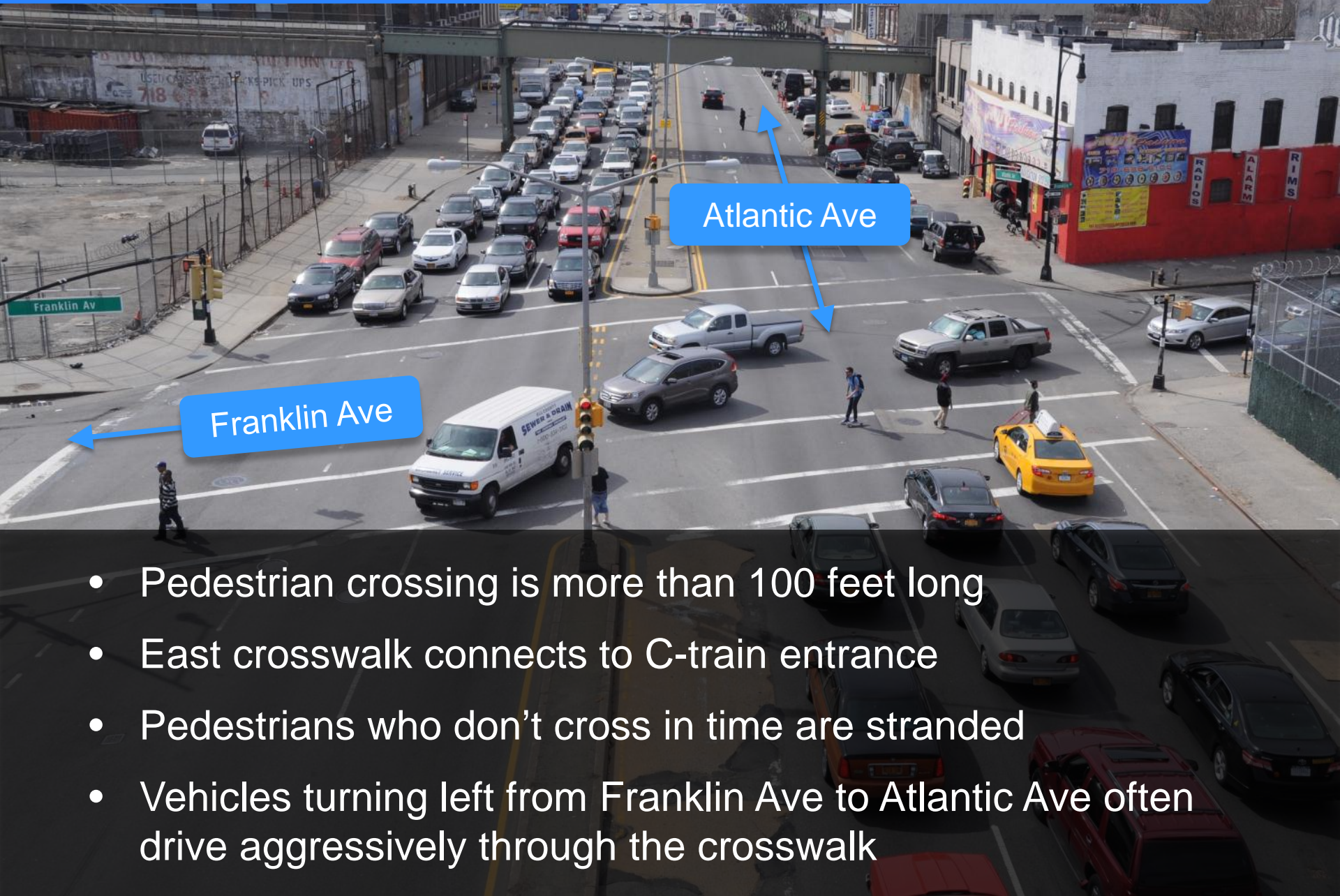
- Benefits:
  - Wider travel lane
  - Wider parking lane
  - Dedicated bicycle lane

# Traffic Analysis

- A traffic model was created to study the effect of removing one southbound lane
- Shorter signal cycle lengths and coordinated green phases were found to increase vehicle flow and decrease travel time despite the reduction in the number of lanes
- Peak hour volume is low enough to fit in one travel lane (775 vehicles, 6pm-7pm)
- The two travel lanes would merge between Atlantic Ave and Pacific St
- It is necessary to maintain two travel lanes between St Johns Pl and Eastern Pkwy for vehicle storage
- This project is expected to significantly relieve congestion on Franklin Ave



# Community Issue: Atlantic Ave Pedestrian Crossing



- Pedestrian crossing is more than 100 feet long
- East crosswalk connects to C-train entrance
- Pedestrians who don't cross in time are stranded
- Vehicles turning left from Franklin Ave to Atlantic Ave often drive aggressively through the crosswalk



# Proposed Enhancement: Concrete Pedestrian Islands

- Install concrete pedestrian islands on Atlantic Avenue
- Benefits:
  - Shorter crossing distance
  - Refuge for pedestrians who can't cross in time
  - Slows turning vehicles





# Proposed Enhancement: Concrete Pedestrian Islands

- Installing the eastern concrete pedestrian island requires banning the westbound left turn from Atlantic Ave to Franklin Ave
- Westbound left turn volumes are very small
- The proposed turn ban would improve traffic flow on both Franklin Ave and Atlantic Ave by redistributing the green time associated with the protected left turn phase



# Proposed Enhancement: Improved Traffic Flow

## Existing PM Signal Phasing



Atlantic Ave phase:  
70 seconds



Westbound protected  
phase: 15 seconds



Franklin Ave phase:  
35 seconds



# Proposed Enhancement: Improved Traffic Flow

## Proposed PM Signal Phasing



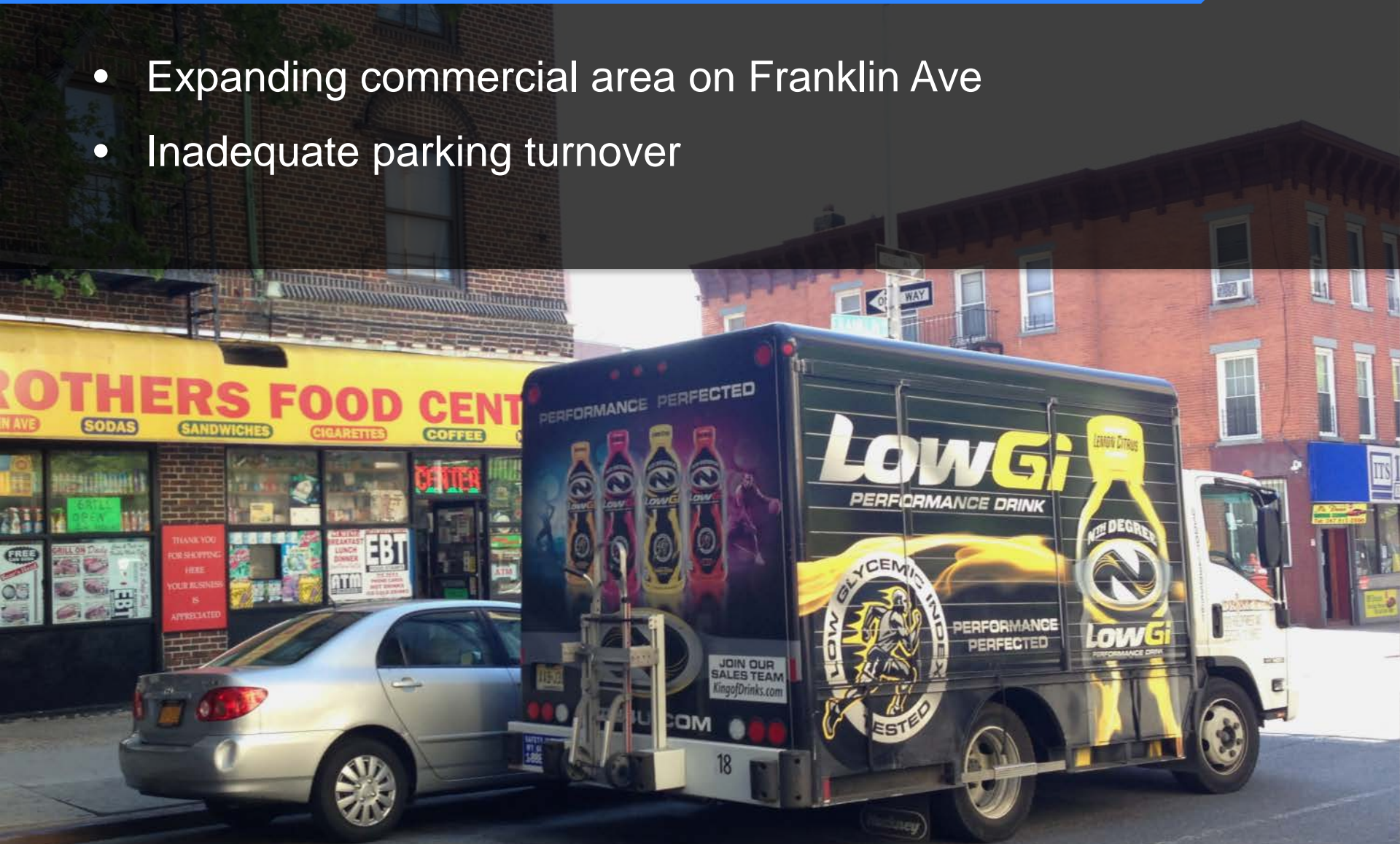
Atlantic Ave phase:  
80 seconds



Franklin Ave phase:  
40 seconds

# Community Issue: Double Parking & Loading

- Expanding commercial area on Franklin Ave
- Inadequate parking turnover





# Proposed Enhancement: 1-Hour Parking Regulation



- Existing parking regulation: Alternate side parking
  - Proposed parking regulation: 1-Hr Parking 8am-7pm Mon-Sat
  - Proposed for commercial areas of Franklin Ave:
    - 110' north of St Marks Av
    - 220' north of Park Pl
    - 200' south of Park Pl
    - 110' south of Sterling Pl
- All on west side of Franklin Ave



# Community Issue: Speeding

- Radar speed gun study on Franklin Ave between Dean St and Bergen St conducted October 2013
- Study revealed that speeding is common
- Majority of motorists are not speeding
- The proposed single travel lane operation will discourage speeding by forcing the few speeding vehicles to follow behind the law abiding majority





# Summary of Proposal

## Geometry

- Create one travel lane by redesigning two narrow travel lanes
  - Maintain two travel lanes between St Johns Pl and Eastern Pkwy
- Maintain and widen all parking lanes
- Install a dedicated bicycle lane
- Build concrete pedestrian islands on Atlantic Avenue

## Signals

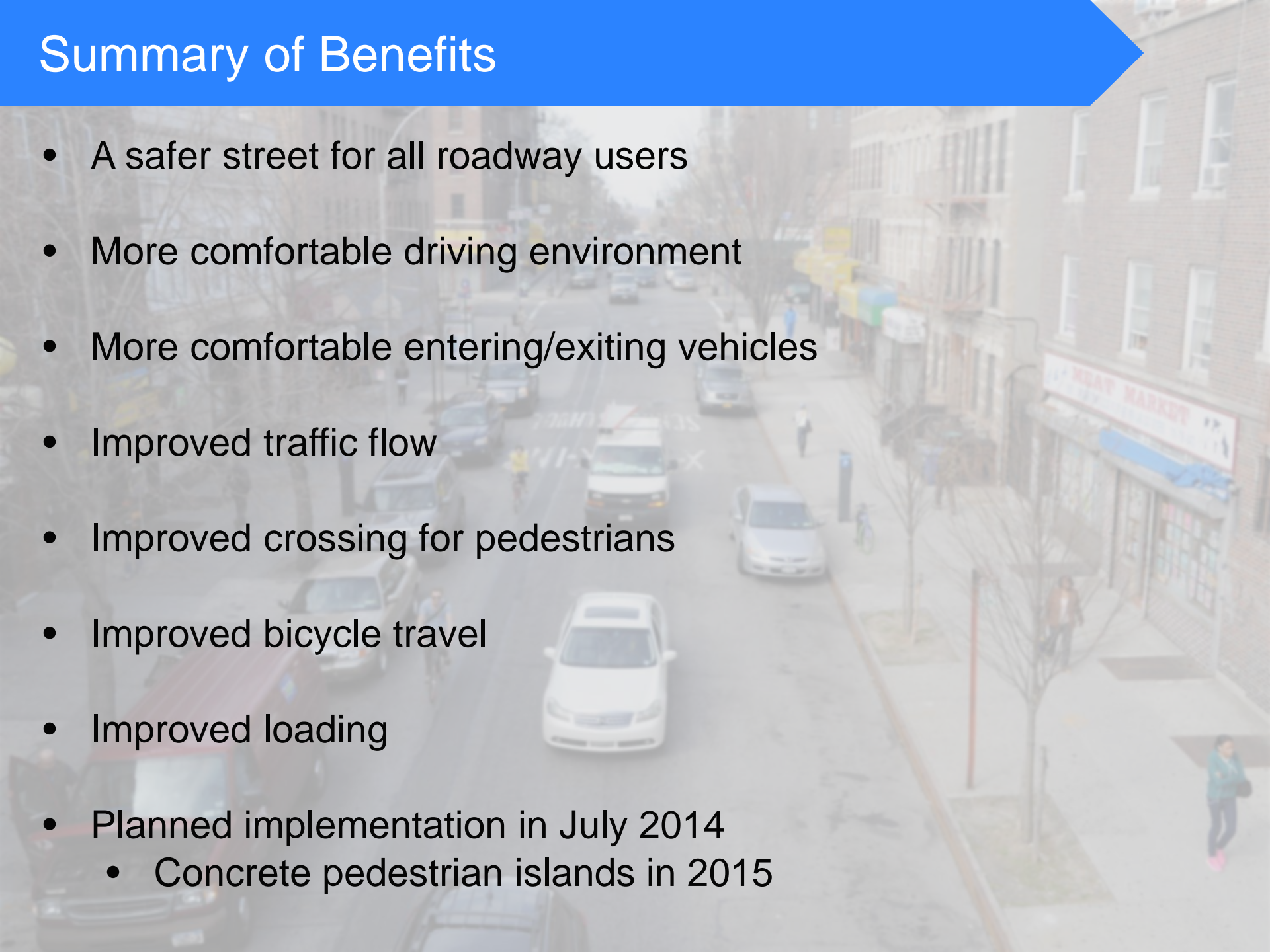
- Standardize all signal cycle lengths to 60 seconds, favoring Franklin Ave
- Sync green lights along Franklin Ave
- Increase green time for Franklin Ave at Atlantic Ave

## Parking Regulations

- 1-Hour Parking 8am-7pm Mon-Sat adjacent to retail activity on Franklin Ave between Bergen St and St Johns St

# Summary of Benefits

- A safer street for all roadway users
- More comfortable driving environment
- More comfortable entering/exiting vehicles
- Improved traffic flow
- Improved crossing for pedestrians
- Improved bicycle travel
- Improved loading
- Planned implementation in July 2014
  - Concrete pedestrian islands in 2015





Questions?

Thank  
You