

St. Nicholas Place & W. 155th St.

Intersection Safety Improvements



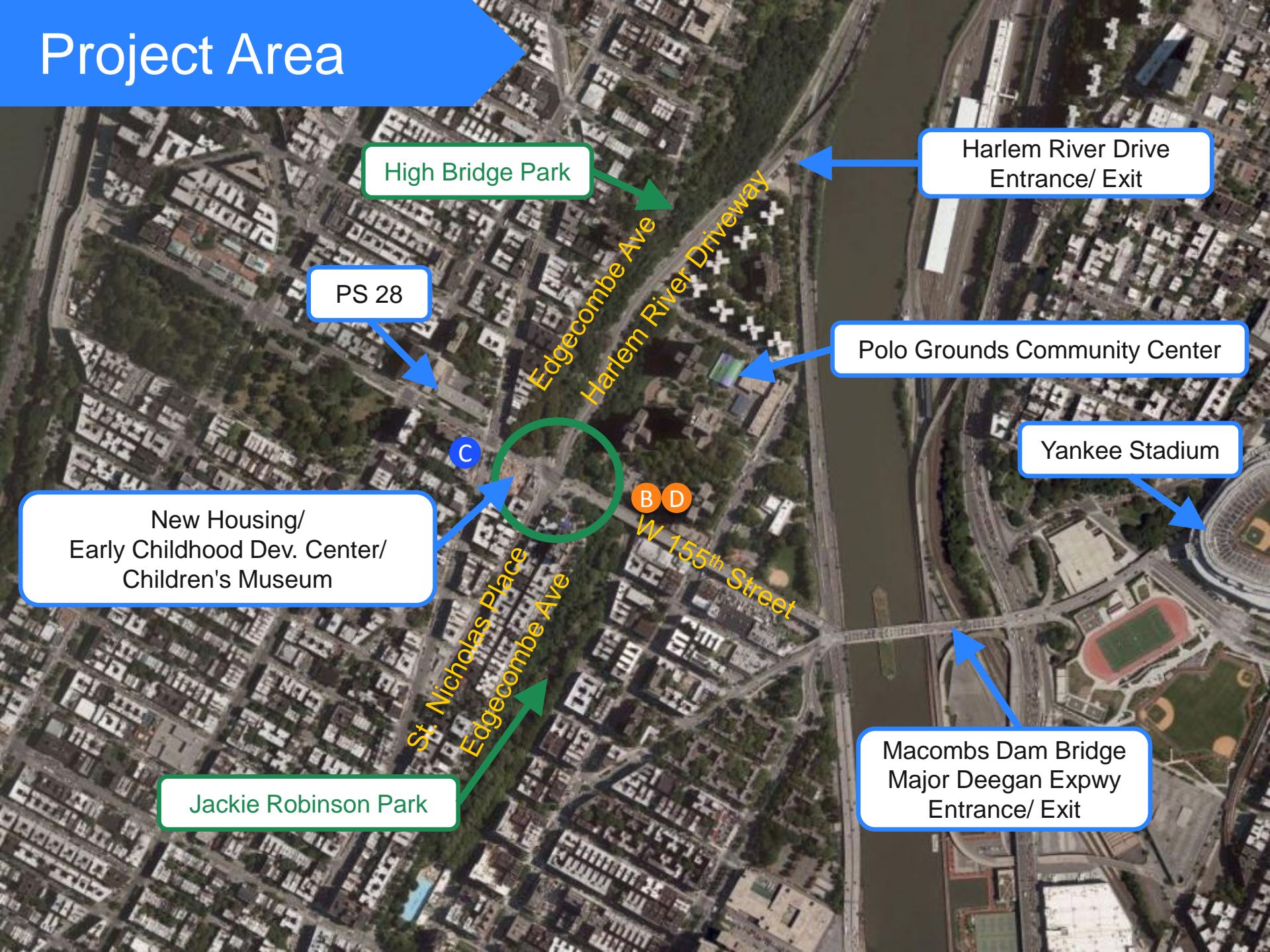
Project Area

Intersection of:
Community Boards
9,10,12

Intersection of:
W 155th Street
St. Nicholas Place
Edgecombe Ave
Harlem River
Driveway Entrance



Project Area



High Bridge Park

PS 28

Harlem River Drive
Entrance/ Exit

Polo Grounds Community Center

Yankee Stadium

New Housing/
Early Childhood Dev. Center/
Children's Museum

Jackie Robinson Park

Macombs Dam Bridge
Major Deegan Expwy
Entrance/ Exit

Background

Community Request

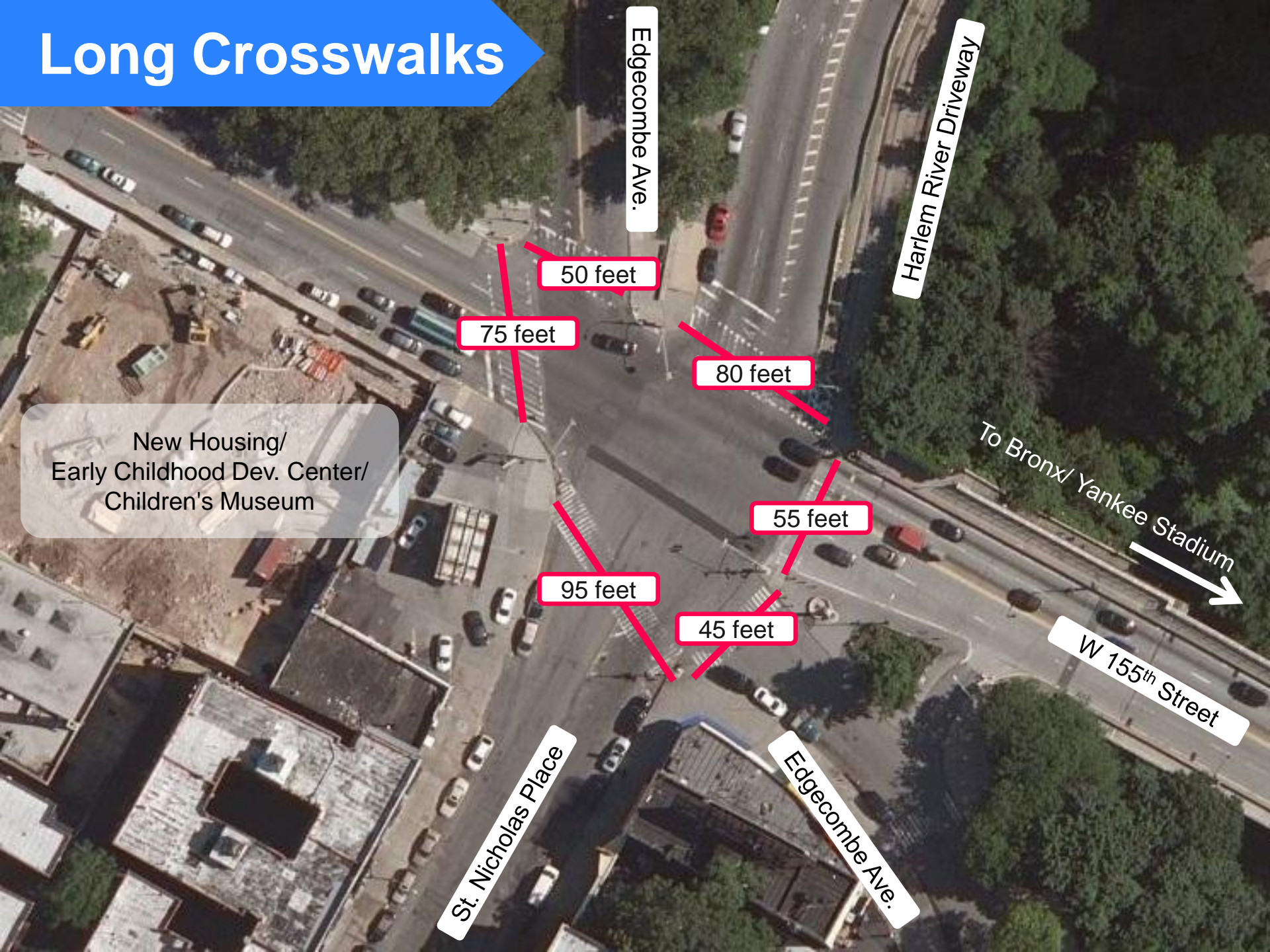
- Council Member Jackson requested pedestrian safety improvements
- Winter 2012 & Summer 2013: Site Walk Through and Workshop with community members to develop a safety improvement plan
- NYPD 30th Precinct requested DOT safety investigation

Safety Issues

- Long crosswalks
- Pedestrian crashes
- Multi-leg intersection with multiple conflicting movements



Long Crosswalks



Edgecombe Ave.

Harlem River Driveway

50 feet

75 feet

80 feet

New Housing/
Early Childhood Dev. Center/
Children's Museum

To Bronx/ Yankee Stadium

55 feet

95 feet

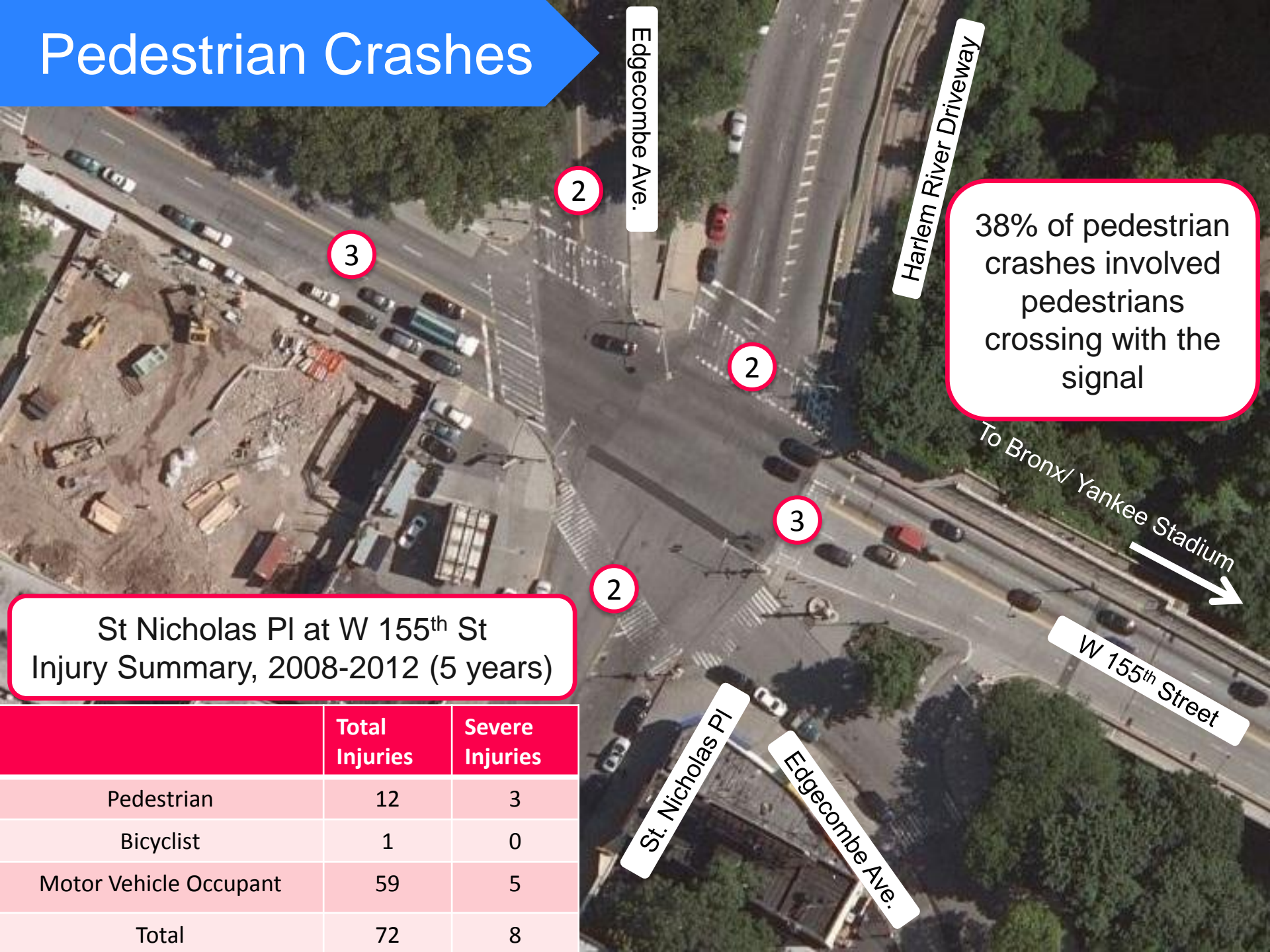
45 feet

W 155th Street

St. Nicholas Place

Edgecombe Ave.

Pedestrian Crashes



38% of pedestrian crashes involved pedestrians crossing with the signal

St Nicholas Pl at W 155th St Injury Summary, 2008-2012 (5 years)

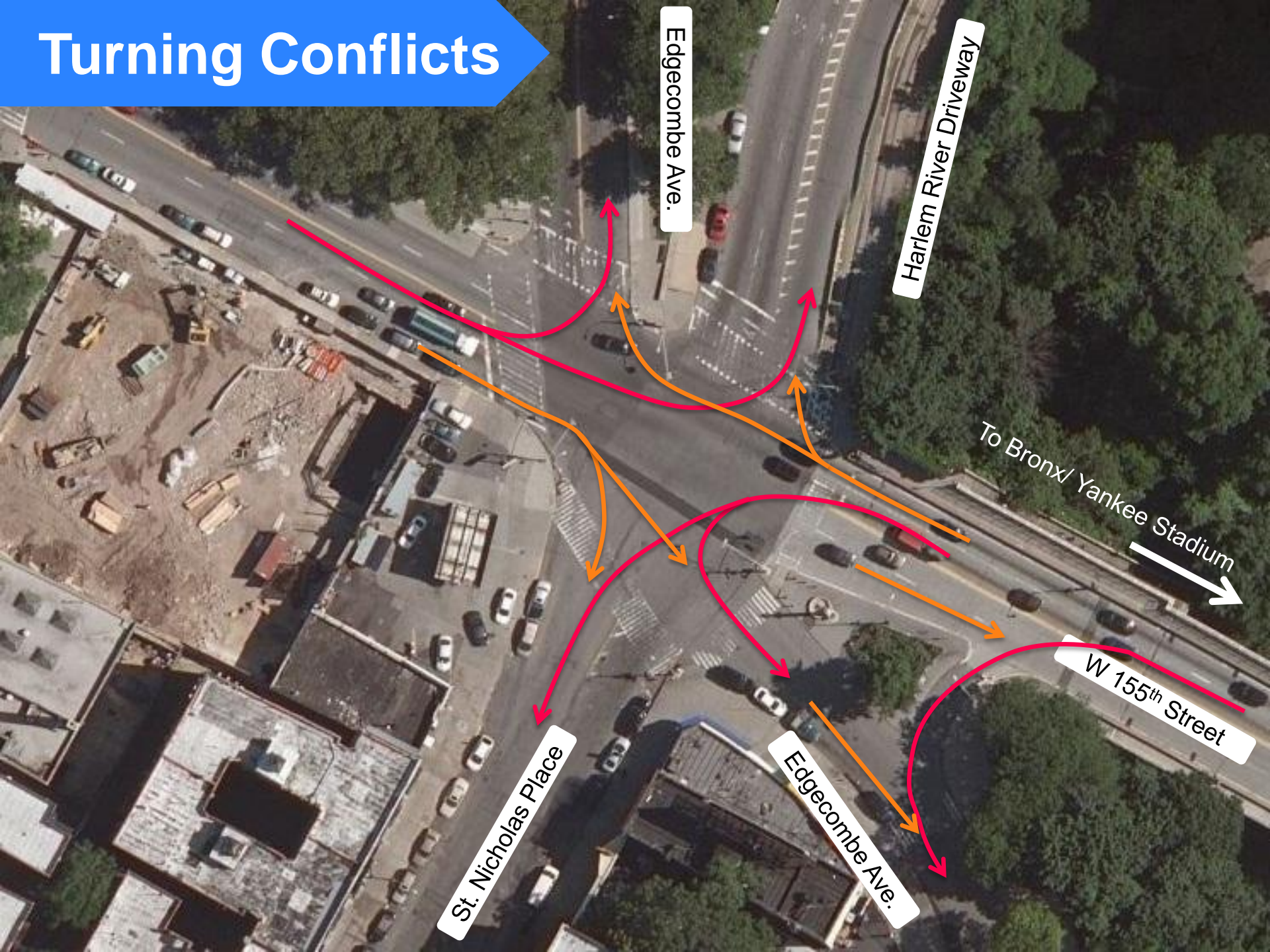
	Total Injuries	Severe Injuries
Pedestrian	12	3
Bicyclist	1	0
Motor Vehicle Occupant	59	5
Total	72	8

Turning Conflicts

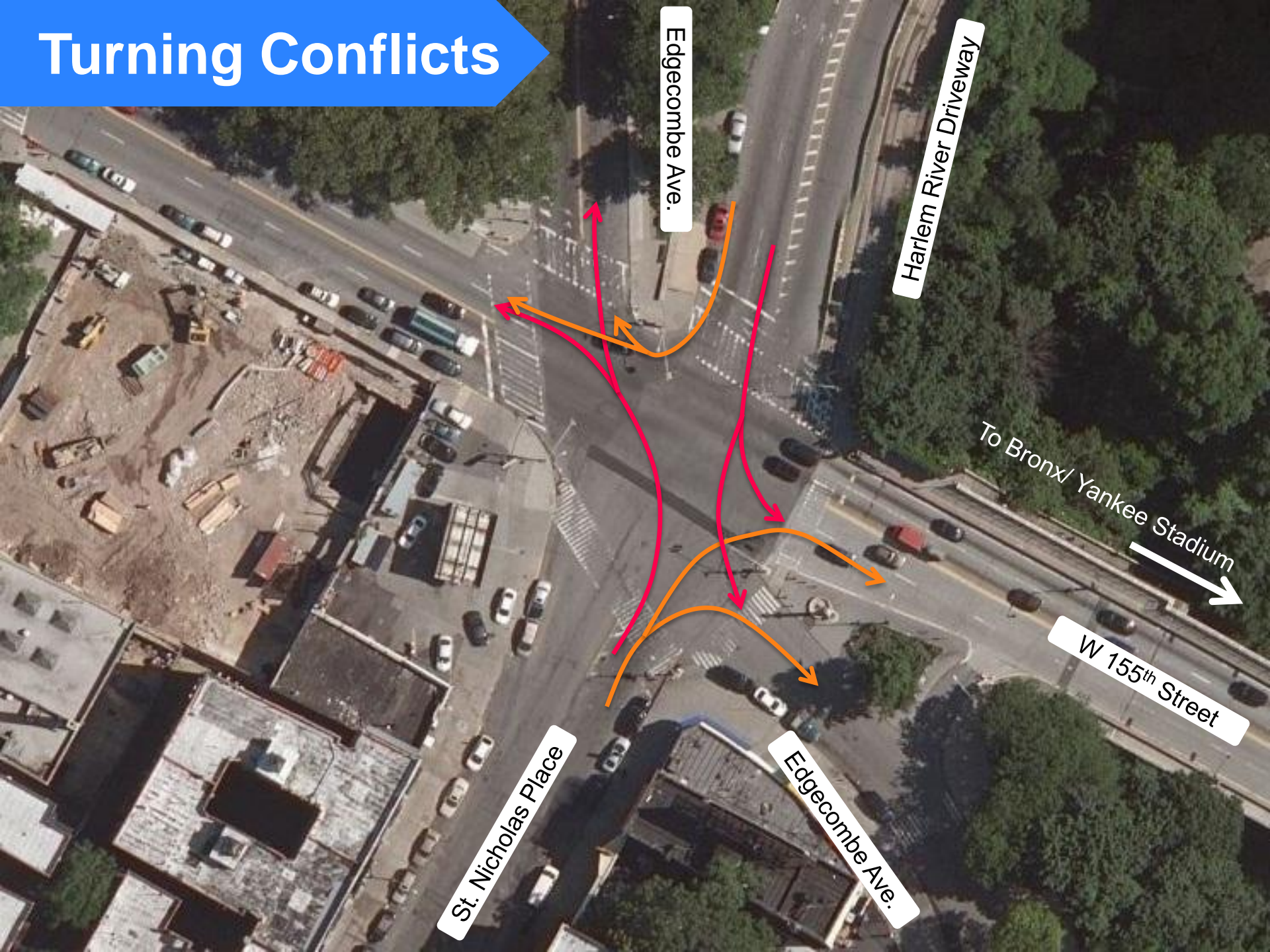


23% of motor vehicle
crashes involved left
turning vehicles

Turning Conflicts



Turning Conflicts



Yielding Conflicts



Rapid Response Toolkit

- Pavement markings
- Turn Restrictions
- Painted surfaces
- Concrete Islands & Island Extensions
- Flexible Delineators



Existing Conditions

Edgecombe Ave

W 155th Street

Harlem River Driveway

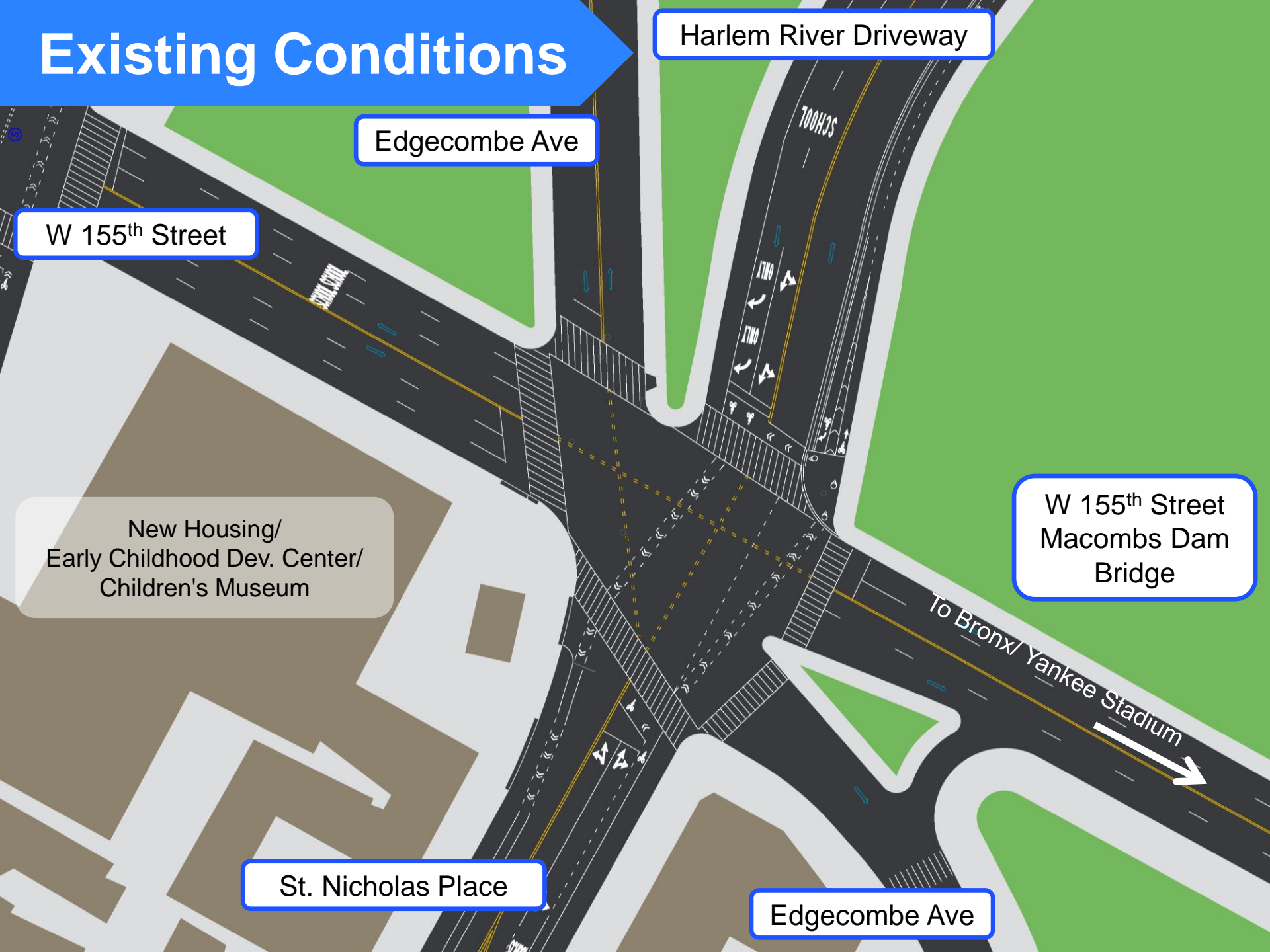
New Housing/
Early Childhood Dev. Center/
Children's Museum

W 155th Street
Macombs Dam
Bridge

St. Nicholas Place

Edgecombe Ave

To Bronx/ Yankee Stadium



Proposed Conditions

Harlem River Driveway

Edgecombe Ave

W 155th Street

6 New Curb Extensions

New Safety Island

W 155th Street
Macombs Dam
Bridge

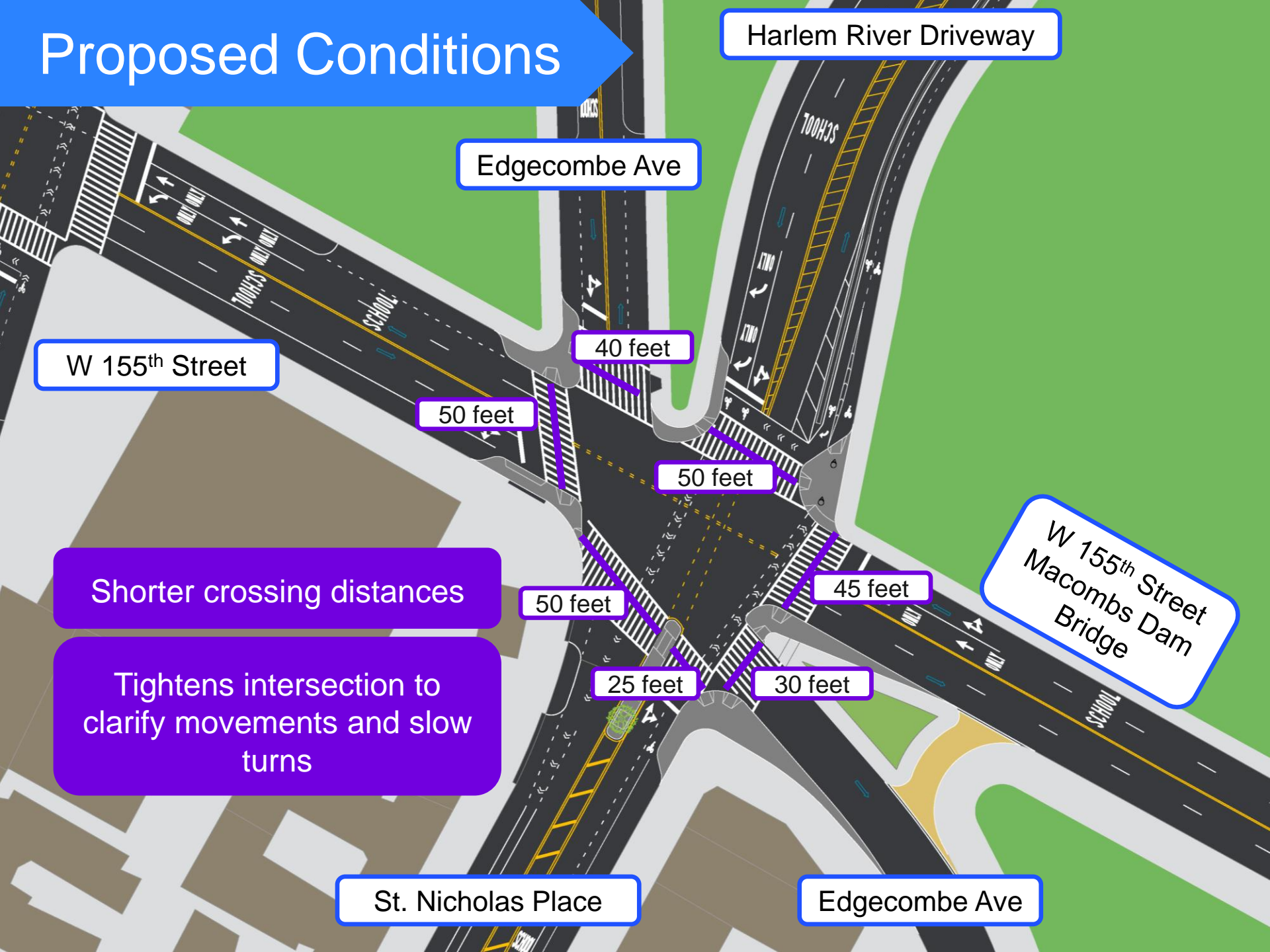
St. Nicholas Place

Edgecombe Ave



Typical safety island

Proposed Conditions



Harlem River Driveway

Edgecombe Ave

W 155th Street

40 feet

50 feet

50 feet

Shorter crossing distances

50 feet

45 feet

W 155th Street
Macombs Dam
Bridge

Tightens intersection to
clarify movements and slow
turns

25 feet

30 feet

St. Nicholas Place

Edgecombe Ave

Proposed Banned Turns

Harlem River Driveway

W 155th Street

Edgecombe Ave

Optimized signal timing to process diverted traffic

Creates conflict free crosswalks

Reduces vehicle/pedestrian, vehicle/vehicle conflict points

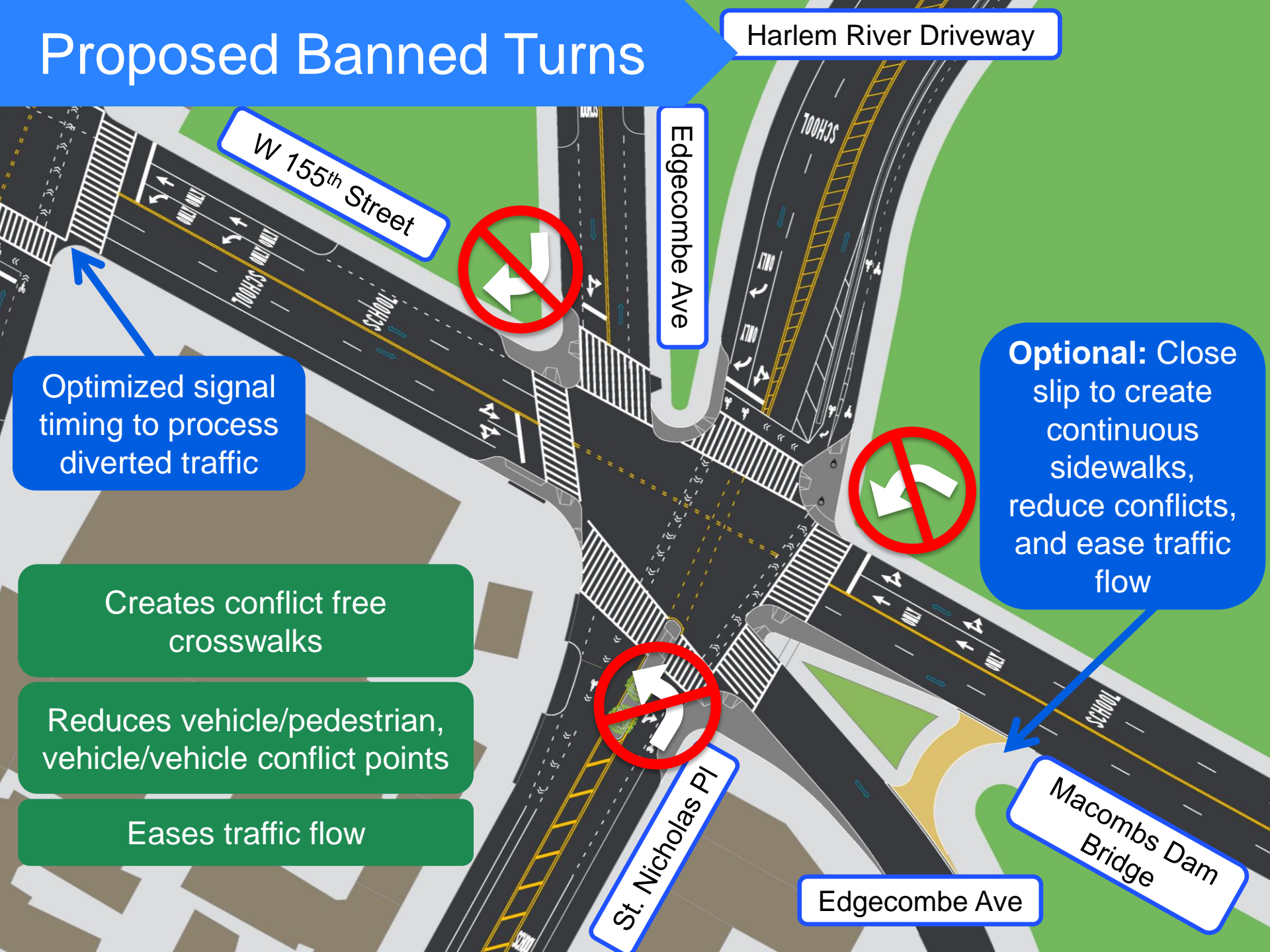
Eases traffic flow

Optional: Close slip to create continuous sidewalks, reduce conflicts, and ease traffic flow

Macombs Dam Bridge

Edgecombe Ave

St. Nicholas Pl



St Nicholas PI

75% of pedestrian
crashes involved
pedestrians
crossing at
intersections
without stop signs
or signals

St Nicholas PI: W 150th St to at W 153rd St
Injury Summary, 2008-2012 (5 years)

	Total Injuries	Severe Injuries	Fatalities
Pedestrian	4	0	0
Bicyclist	2	0	0
Motor Vehicle Occupant	29	6	1
Total	35	6	1



Existing Conditions

Lack of pedestrian crossings

Uninterrupted corridor encourages speeding



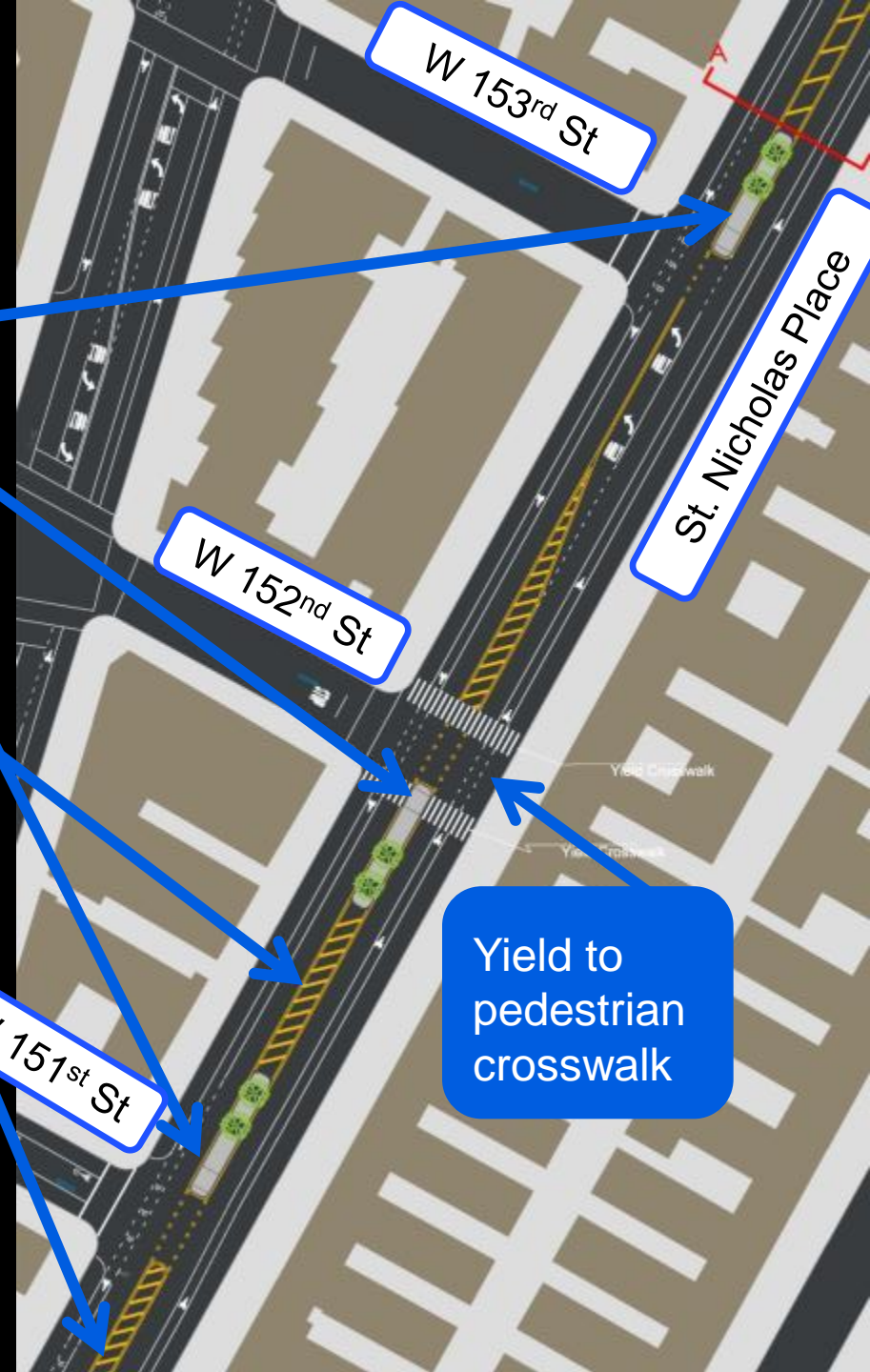
Proposed Conditions

New pedestrian islands

Approved speed hump locations



Yield to pedestrian crosswalk in the Bronx



Proposed 2014 Changes

Harlem River Driveway

Edgecombe Ave

W 155th Street

Ban southbound right
from Edgecombe Ave

Ban northbound left
from St. Nicholas Pl

Alternately changes
can be included with
full project
implementation in 2015

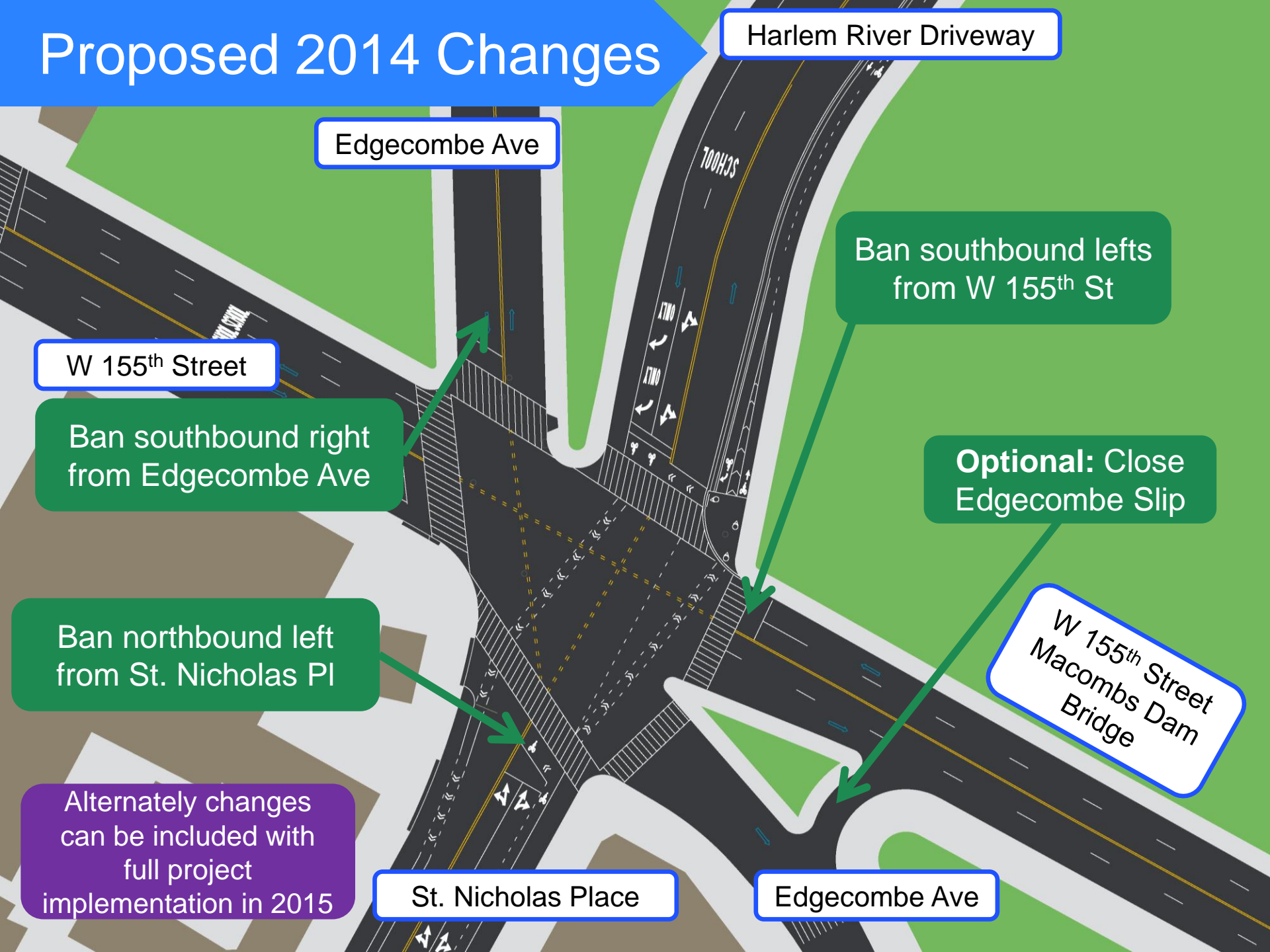
St. Nicholas Place

Ban southbound lefts
from W 155th St

Optional: Close
Edgecombe Slip

W 155th Street
Macombs Dam
Bridge

Edgecombe Ave



Plan Summary

Proposed changes to the intersection of St. Nicholas Pl and W 155th St

1. Expand existing greenstreet island
2. Add new triangle island on St. Nicholas Pl at W 155th St
3. Add new pedestrian island on St. Nicholas Pl
4. Ban southbound lefts off of W 155th St
5. Ban southbound right from Edgecombe
6. Ban westbound lefts off of W 155th St
7. Optional slip ramp closure W.155th St to Edgecombe

Proposed Changes to St. Nicholas Pl

1. Add pedestrian islands at 151st St, 152nd St and 153rd St
2. Add yield crosswalk on St. Nicholas Pl at W 152nd St

nyc.gov/dot

**Thank
You**