

Church Avenue Reconstruction



2014

Commissioner Polly Trottenberg, New York City Department of Transportation
Presented by Division of Traffic & Planning, April 28th, 2014 to Community Board 14



Project Background

Church Avenue BID requested capital improvements



Major commercial corridor in Prospect Park South

Top third of Brooklyn high crash corridors (2008-2012)

Church Ave - Coney Island Ave to Flatbush Ave, BK
Injury Summary, 2008-2012 (5 Years)

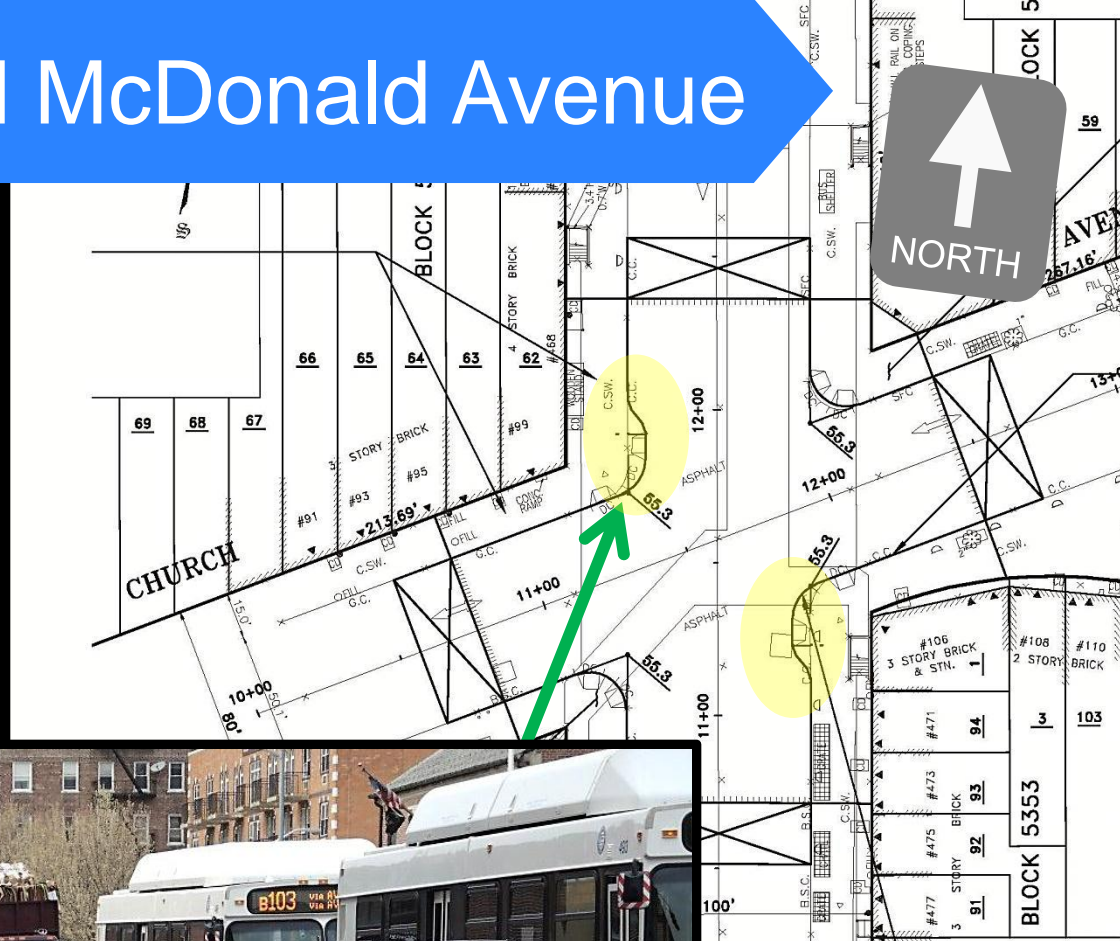
	Total Injuries	Severe Injuries	Fatalities	KSI
Pedestrian	98	4	0	4
Bicyclist	23	2	1	3
Motor Vehicle Occupant	245	5	1	6
Total	366	11	2	13

Fatalities, 01/01/2008-3/3/2014 : 2

Source: Fatalities: NYCDOT
Injuries: NYSDOT
KSI: Persons Killed or Severely Injured

Church Avenue and McDonald Avenue

High pedestrian
volumes/congestion



Extend curb on NW
and SE corners

Church Avenue and E 10th Street

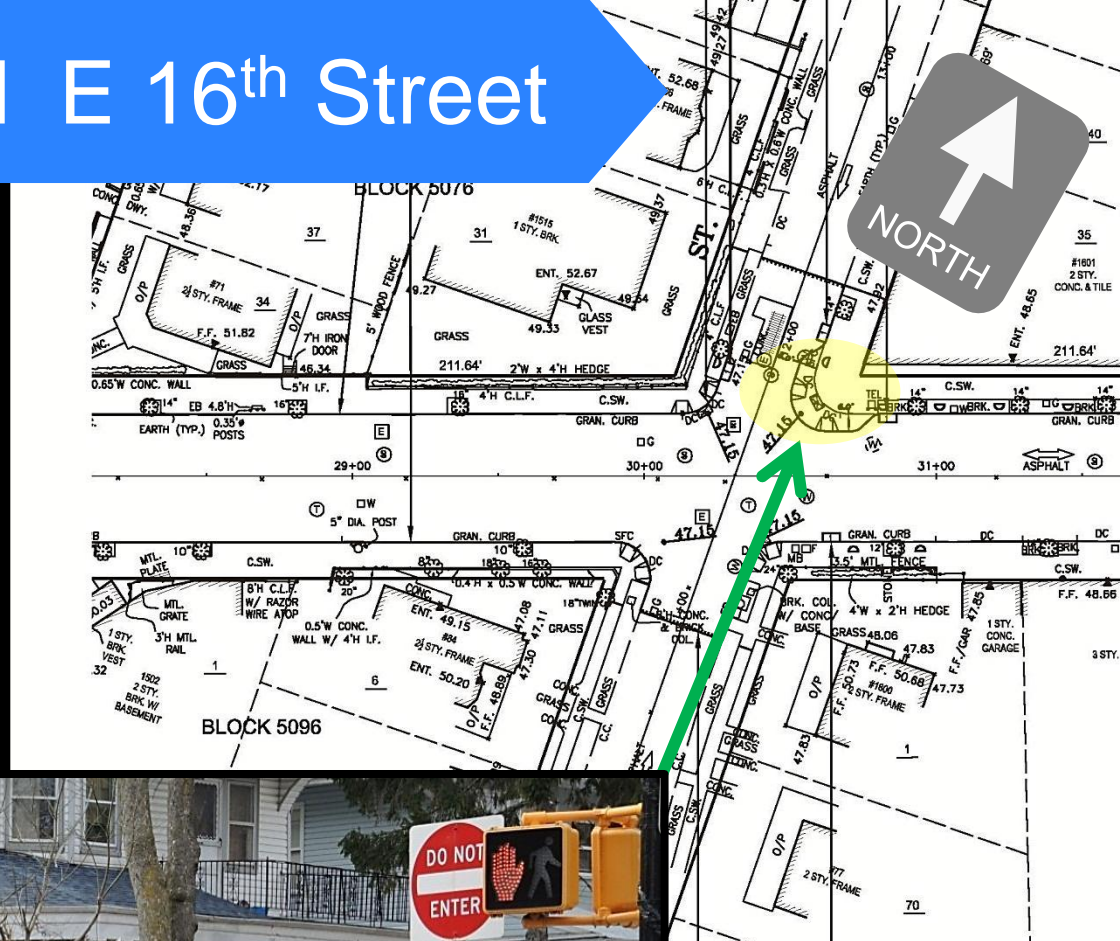
Narrow Sidewalk
at T-Intersection



Extend curb on
NW corner

Church Avenue and E 16th Street

Extend curb on
NE corner

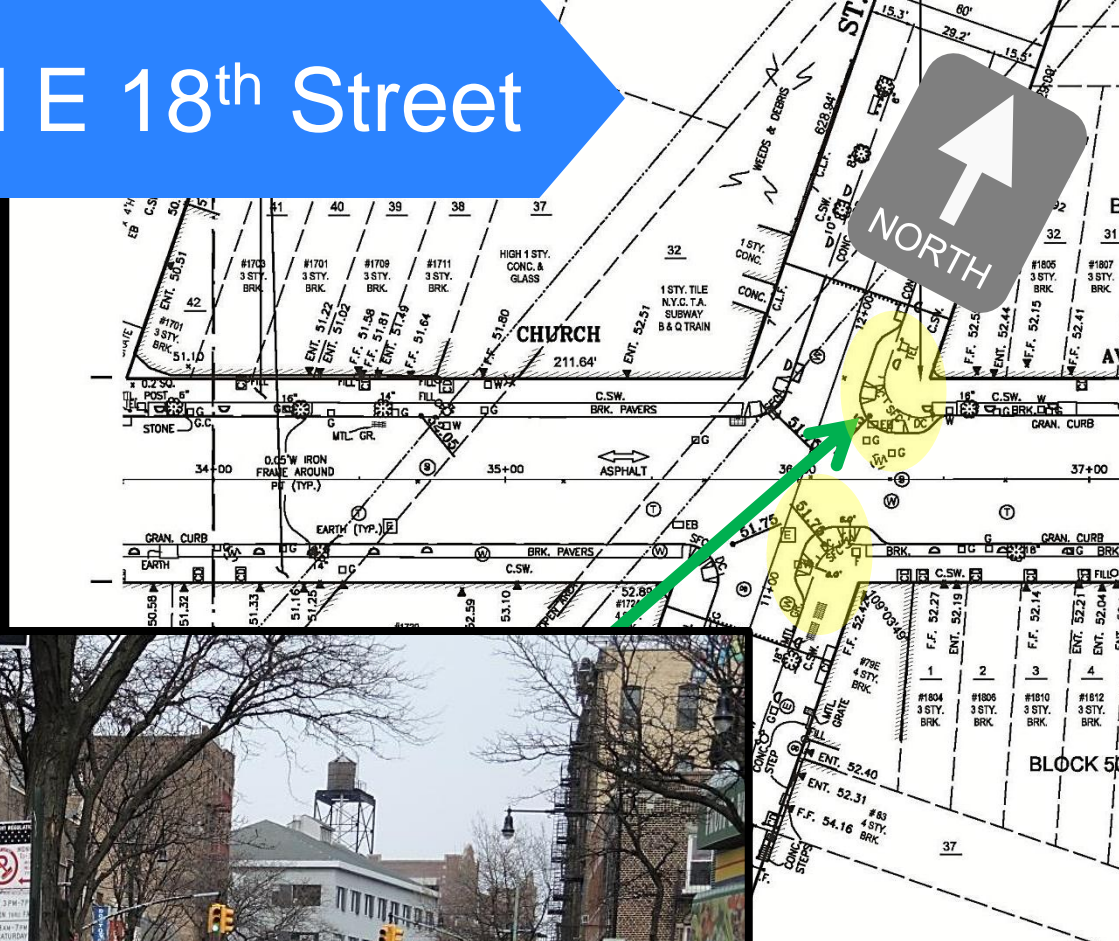


The site plan for Block 5077 shows a proposed 3-story brick building (H1702) highlighted in yellow. The plan includes street names like North Ave. and various engineering notes such as 'CONC. CURB', 'BRK. PAVERS', and 'ENT. 48.65'. A green arrow points from the photograph below to the yellow-highlighted building on the plan.



Church Avenue and E 18th Street

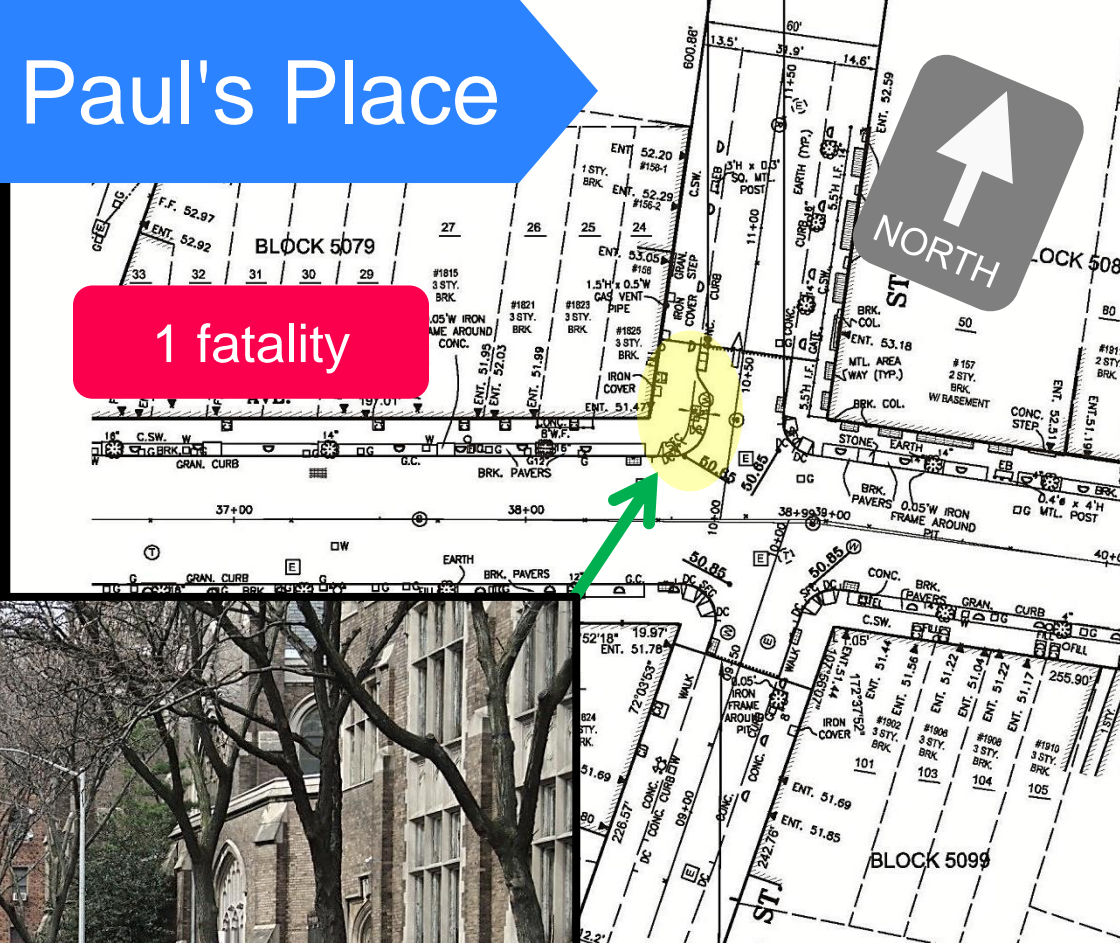
Extend curb on NE
and SE corners



Church Ave and St Paul's Place

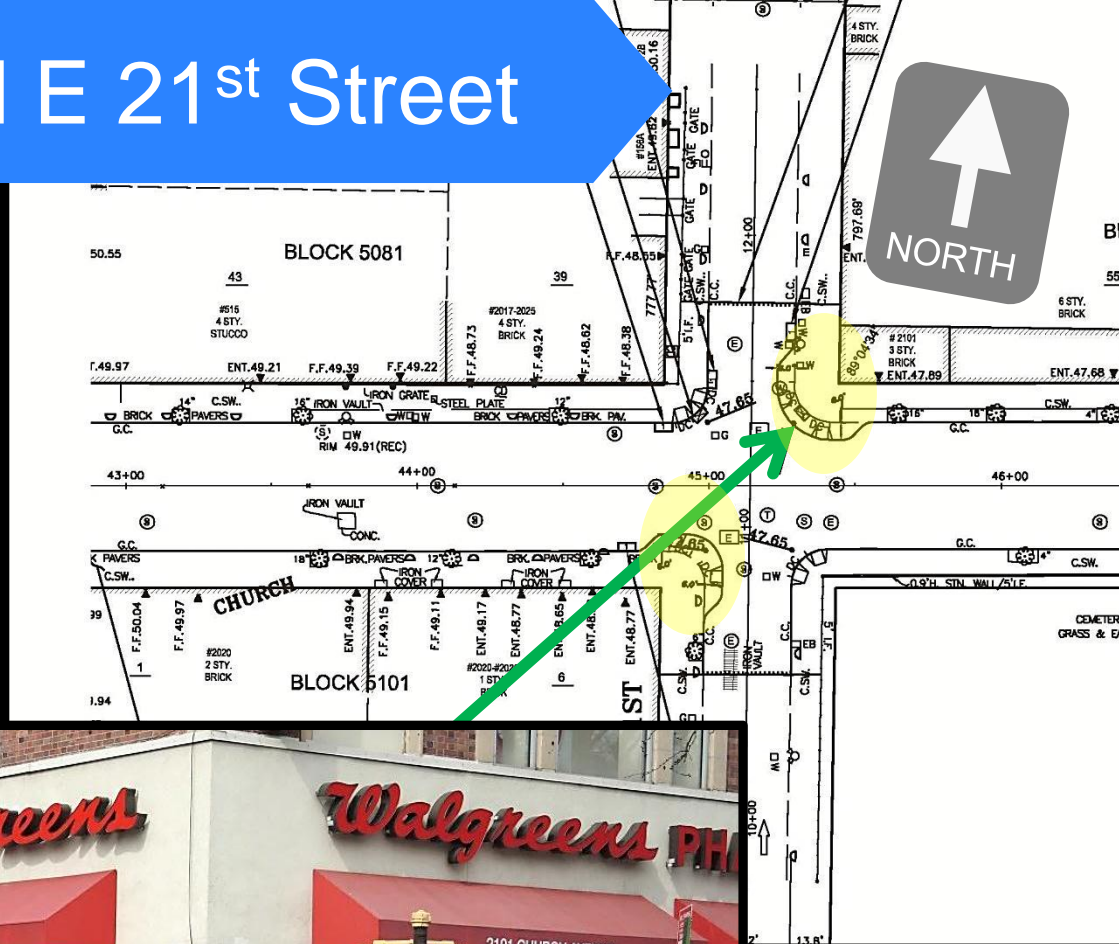
Add curb extension
on NW corner

1 fatality



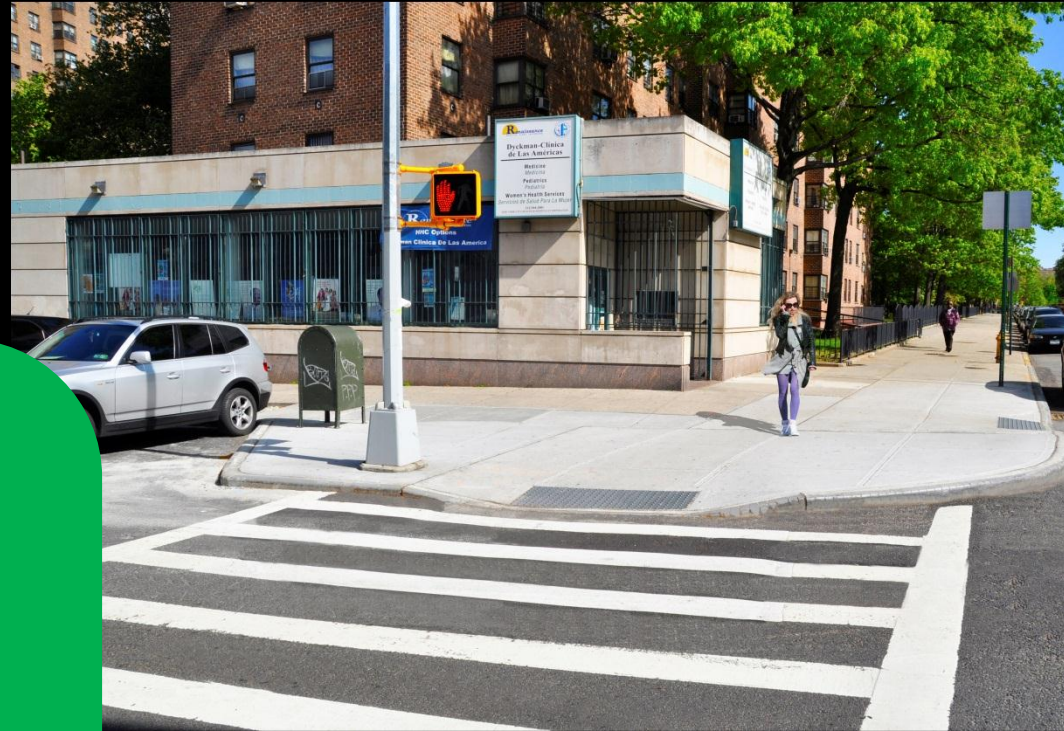
Church Avenue and E 21st Street

Add curb extensions on NE and SW corners

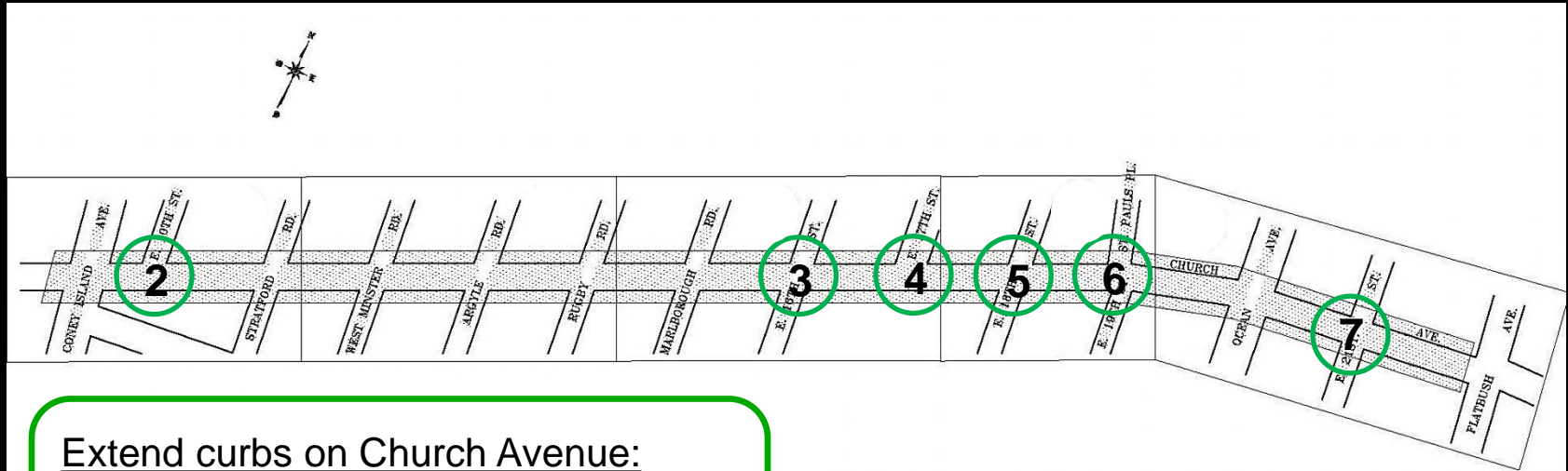


Benefits of Curb Extensions

1. Increased Pedestrian Visibility
2. Increased Pedestrian Waiting Space
3. Additional space for street furnishing, plants and amenities
4. Reduced illegal parking at corners and crosswalks
5. It facilitates the ability to provide two curb ramps per corner

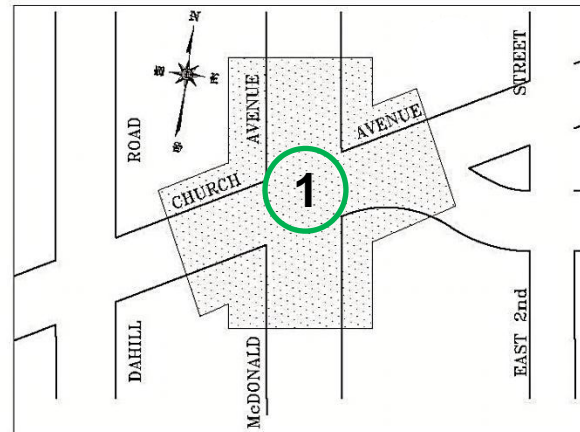


Plan Summary



Extend curbs on Church Avenue:

1. McDonald Avenue: NW and SE corners
2. E 10th Street: NW corner
3. E 16th Street: NE corner
4. E 17th Street: NW corner
5. E 18th Street: NE and SE corners
6. St Pauls Place: NW corner
7. E 21st Street: NE and SW corners





www.nyc.gov/dot

Thank
You