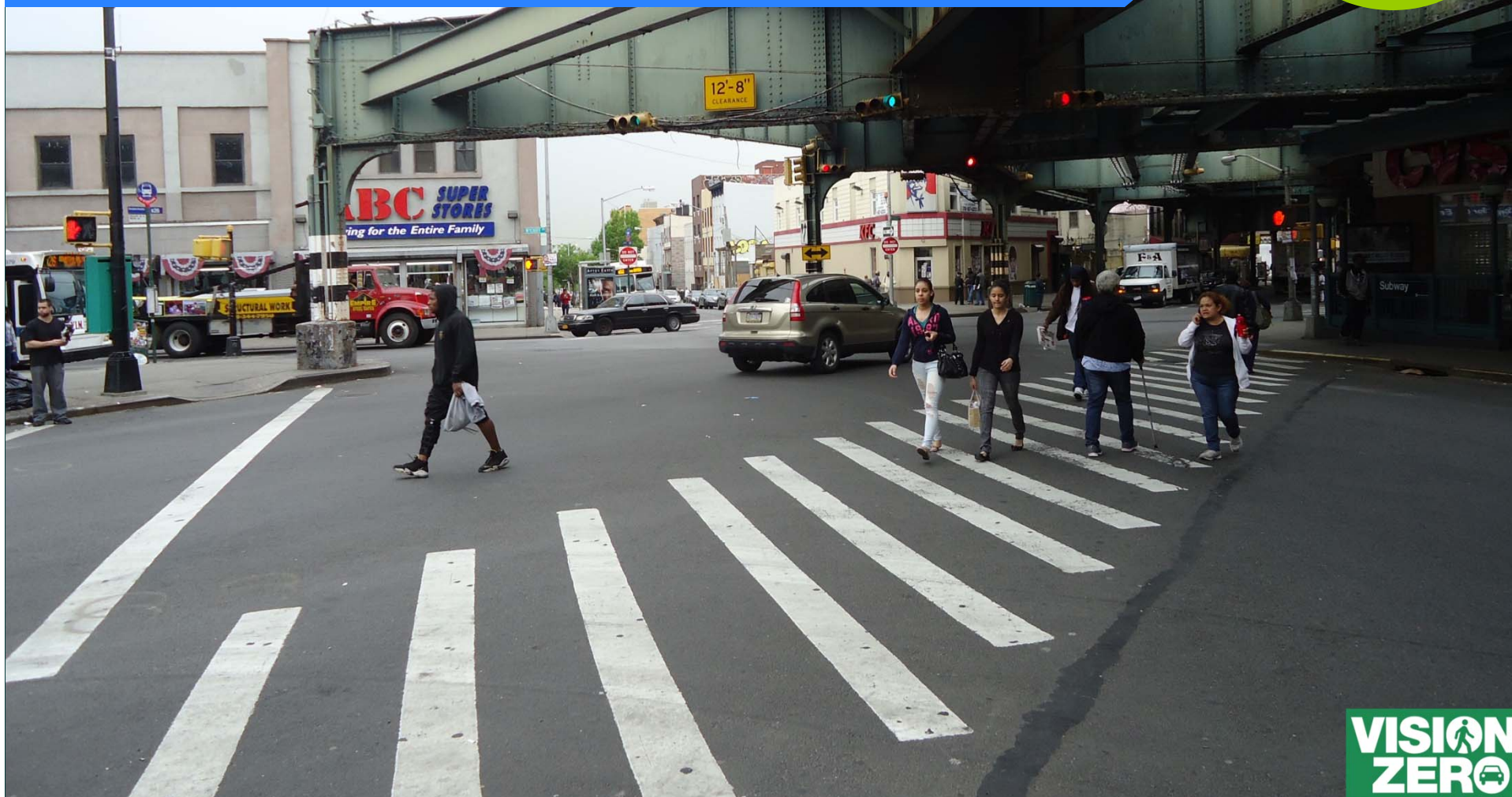


Myrtle Ave/Wyckoff Ave/Palmetto St

High Pedestrian Crash Location

Community Boards 4 (BK) and 5 (QN) – April 21, 2014

2014

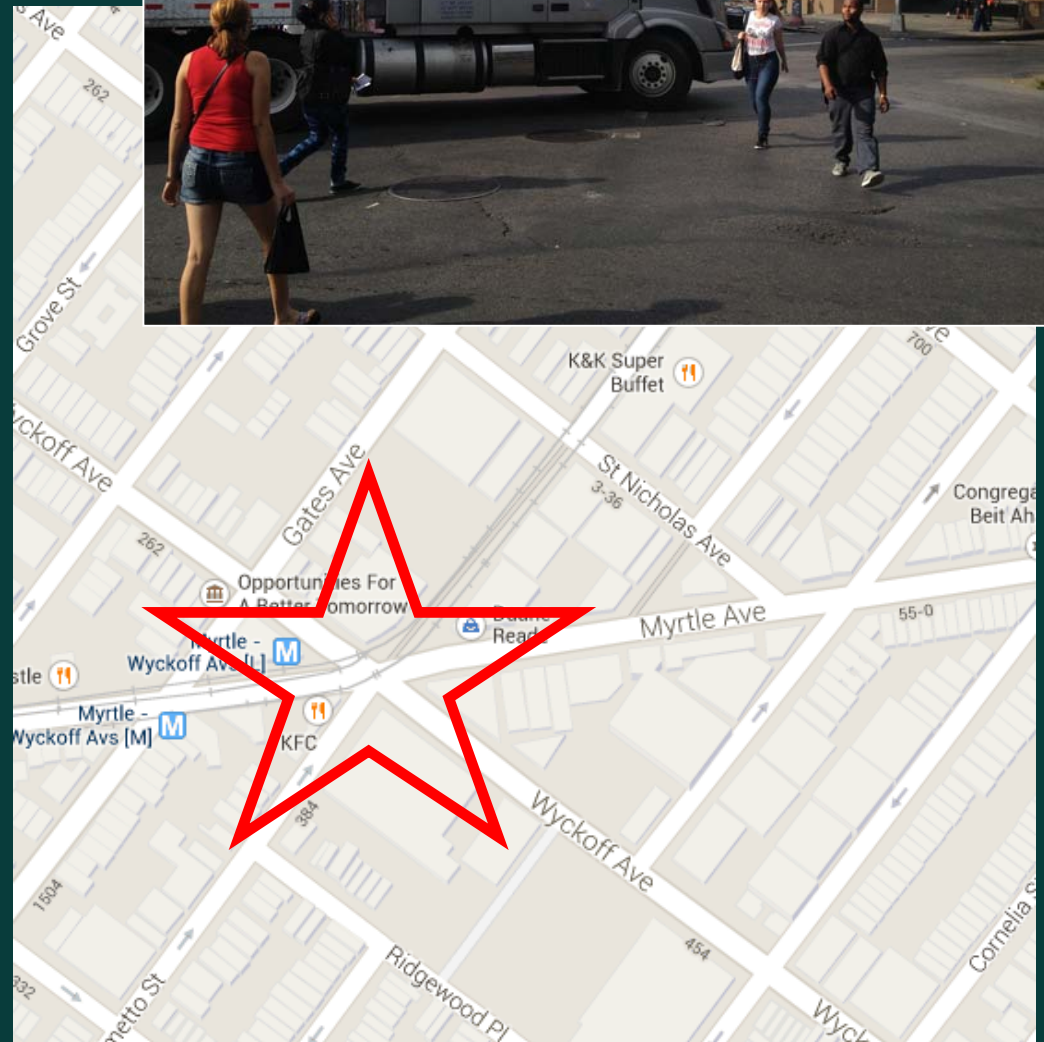


Commissioner Polly Trottenberg
New York City Department of Transportation
Office of Research, Implementation and Safety



Project Location

- Transit hub with access to M and L subways and B13, B26, B52, B54, Q55, and Q58 buses
- Palmetto St north of intersection is bus only, bus layover on Wyckoff
- Local (BK) and through (QN) truck route on Myrtle Ave with large and heavy truck traffic using the intersection
- Heavy pedestrian volumes



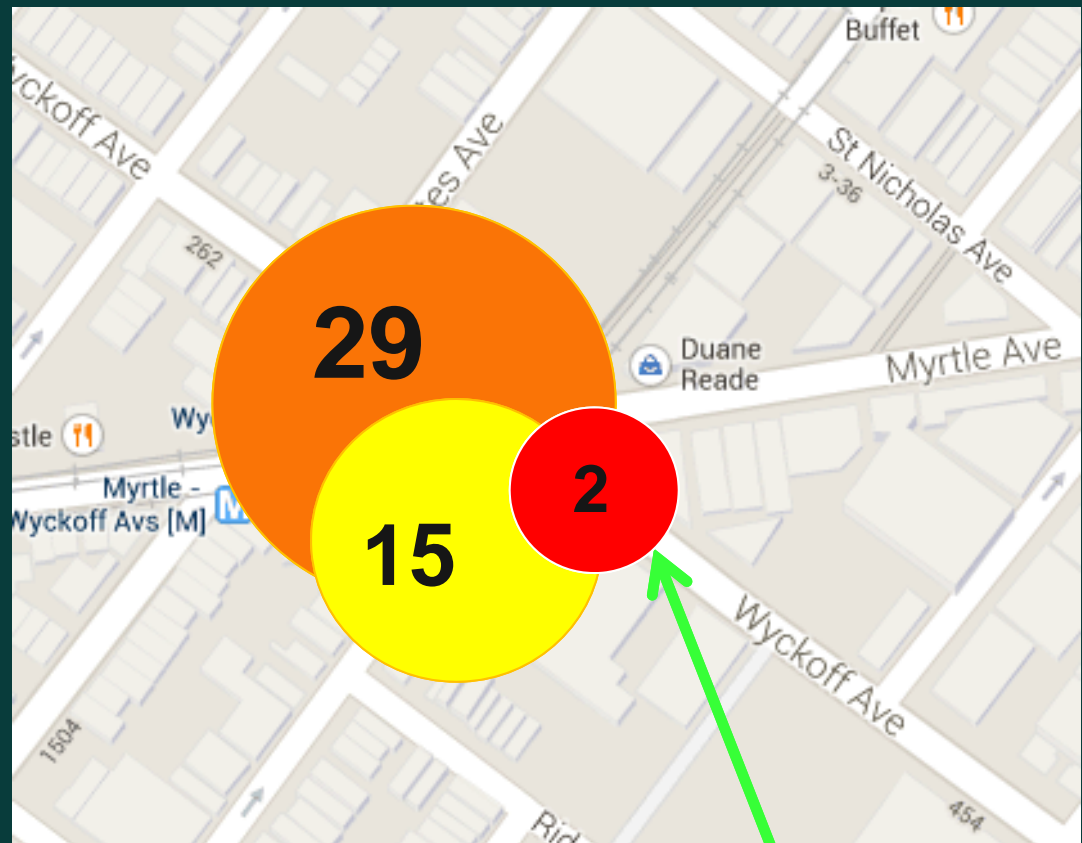
Existing Conditions

- Multi-legged intersection with long crossing distances
- Poor visibility, especially at night, under elevated subway tracks and around subway support columns
- Skewed intersection makes for longer crossing distances
- West crosswalk across Myrtle Ave has heaviest pedestrian volumes
- Pedestrian non-compliance



Safety Data: Project Need

- Designated as a High Pedestrian Crash Location



Myrtle Ave At Wyckoff Ave, QN

Injury Summary, 2008-2012 (5 Years)

	Total Injuries	Severe Injuries	Fatalities	KSI
Pedestrian	15	3	1	4
Bicyclist	0	0	0	0
Motor Vehicle Occupant	14	1	0	1
Total	29	4	1	5

Fatalities, 01/01/2008-3/3/2014 : 1

Source: Fatalities: NYCDOT
Injuries: NYSDOT
KSI: Persons Killed or
Severely Injured

5 KSI (persons killed or severely injured) at this intersection

2 pedestrian fatalities: 1 in 2009 and 1 in 2013 (recorded by NYPD as just east of the intersection)

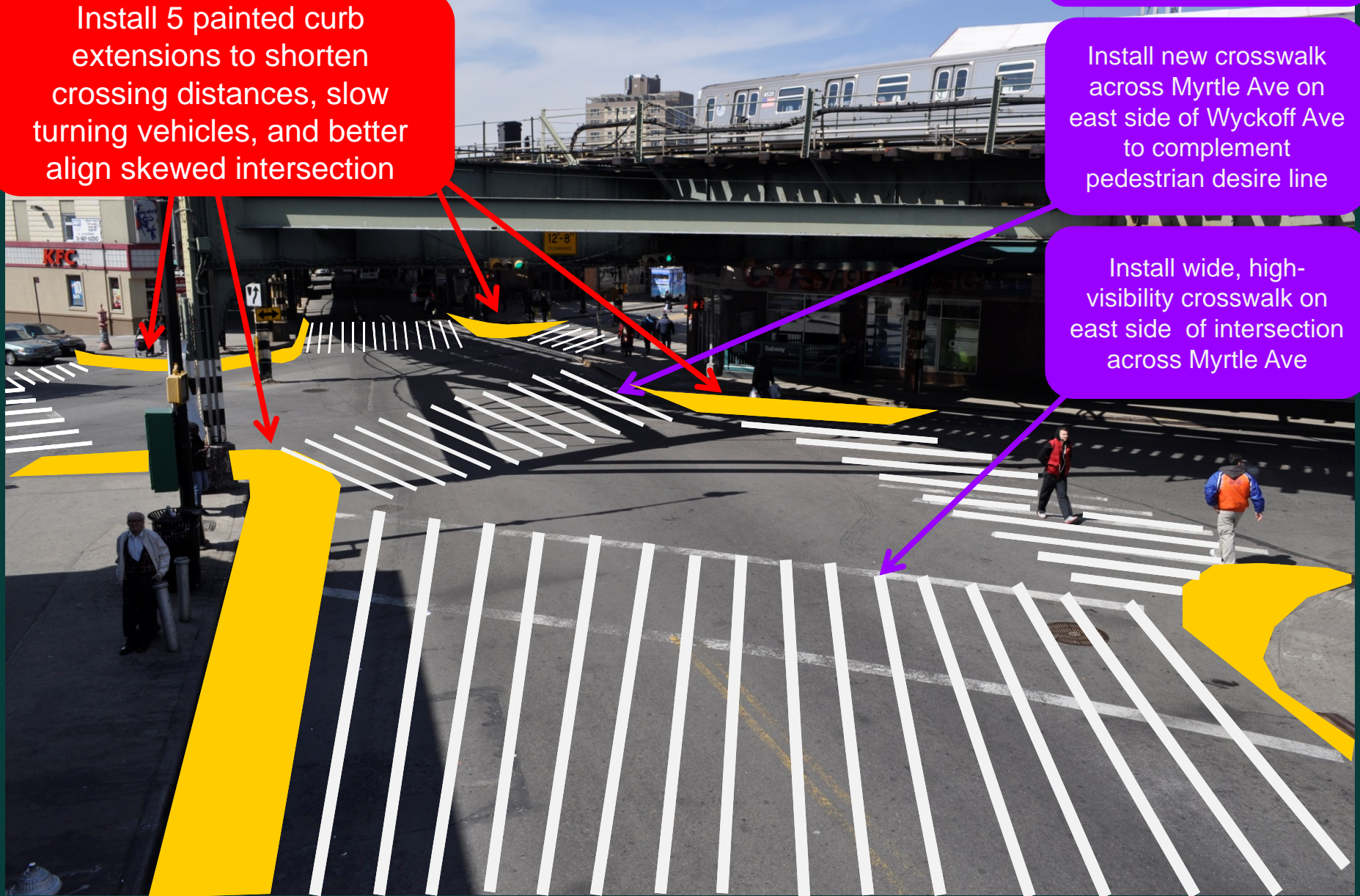
Proposal: Curb Exentions

Install 5 painted curb extensions to shorten crossing distances, slow turning vehicles, and better align skewed intersection

Install high-visibility crosswalks at all crossings

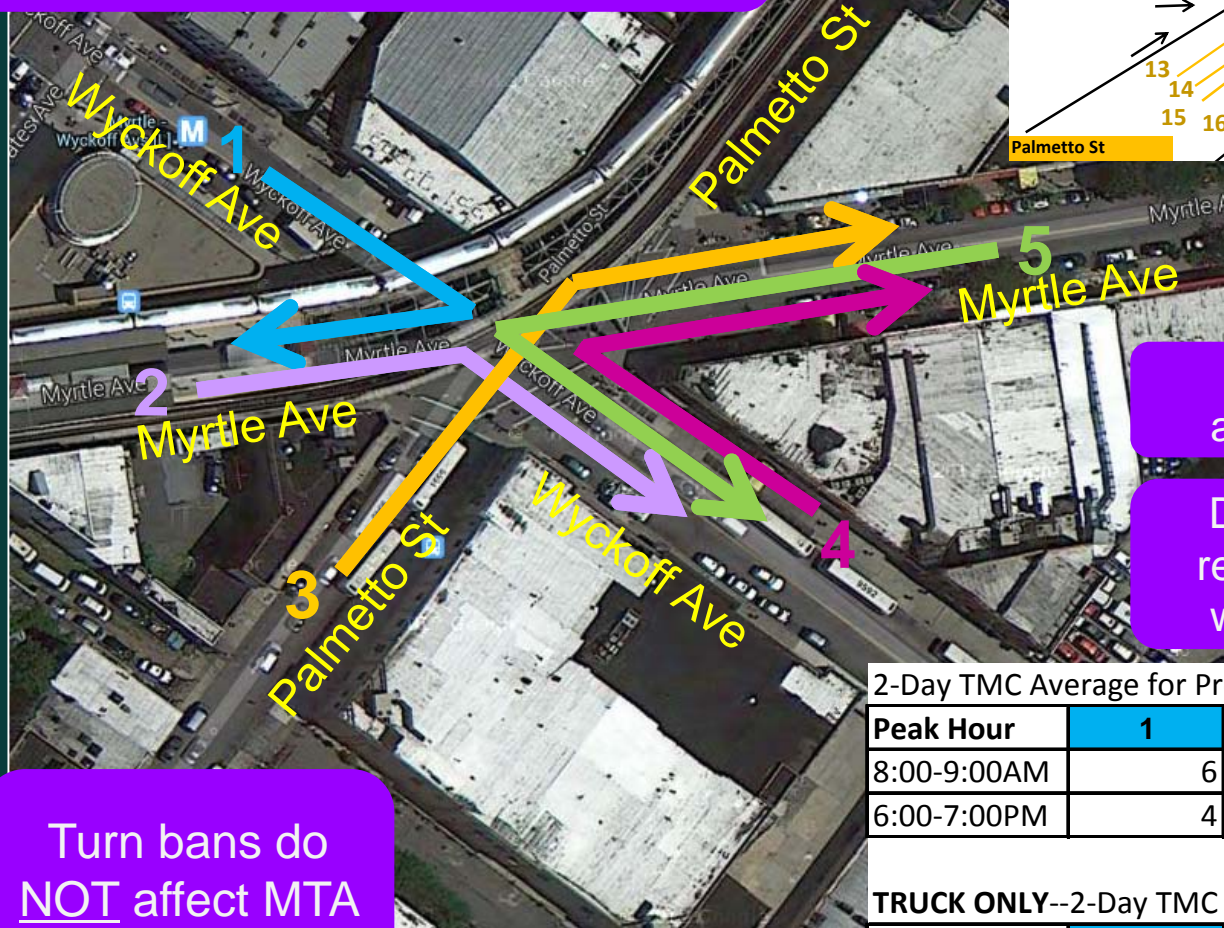
Install new crosswalk across Myrtle Ave on east side of Wyckoff Ave to complement pedestrian desire line

Install wide, high-visibility crosswalk on east side of intersection across Myrtle Ave

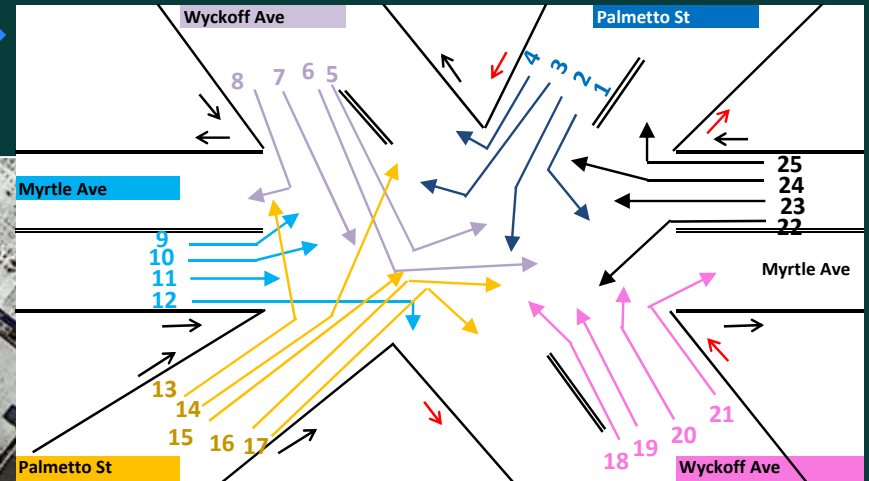


Proposal: Turn Bans

Ban 5 low-volume turns to minimize dangerous vehicle movements and reduce pedestrian-vehicle conflicts



Turn bans do NOT affect MTA bus operations



Street grid allows for many alternative routes for vehicles

Diversion plan will help trucks return to Myrtle Ave truck route without using this intersection


2-Day TMC Average for Proposed Turn Bans

Peak Hour	1	2	3	4	5
8:00-9:00AM	6	38	26	20	20
6:00-7:00PM	4	86	44	12	33

TRUCK ONLY--2-Day TMC Average for Proposed Turn Bans

Peak Hour	1	2	3	4	5
8:00-9:00AM	1	4	0	1	1
6:00-7:00PM	0	2	0	0	0

Alternative Routes for Myrtle Ave

Ban right turns from
N/B Palmetto St onto
E/B Myrtle Ave 

Peak hour volumes:
8:00a-9:00a: 26
6:00p-7:00p: 44



Alternative Routes for Wyckoff Ave

Ban right turns from
N/B Wyckoff Ave
onto
E/B Myrtle Ave



Peak hour volumes:
8:00a-9:00a: 20
6:00p-7:00p: 12



Alternative Routes for Myrtle Ave

Ban left turns from
W/B Myrtle Ave
onto
S/B Wyckoff Ave



Peak hour volumes:
8:00a-9:00a: 20
6:00p-7:00p: 33

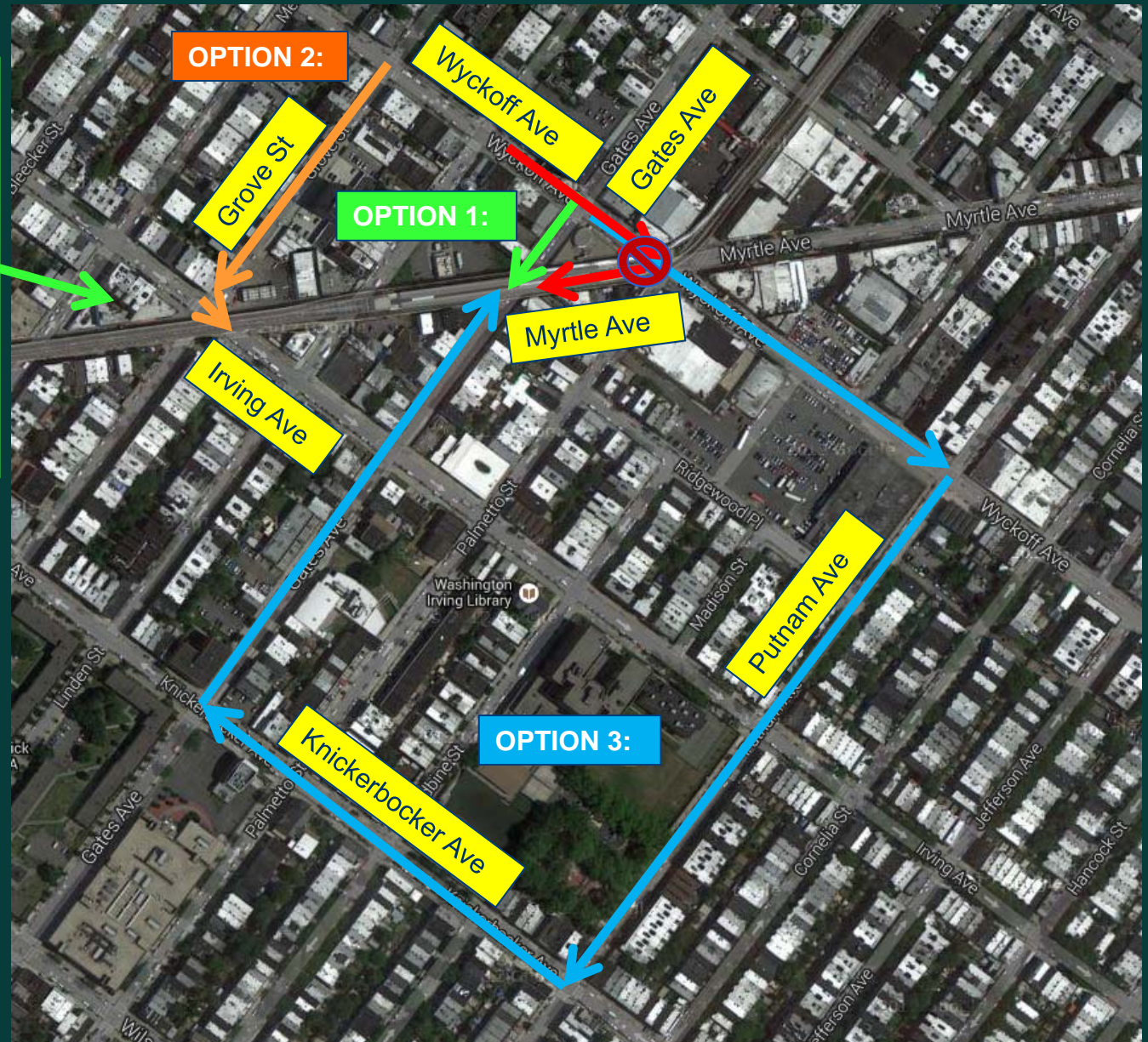


Alternative Routes for Myrtle Ave

Ban right turns from
S/B Wyckoff Ave
onto
W/B Myrtle Ave



Peak hour volumes:
8:00a-9:00a: 6
6:00p-7:00p: 4



Alternative Routes for Myrtle Ave

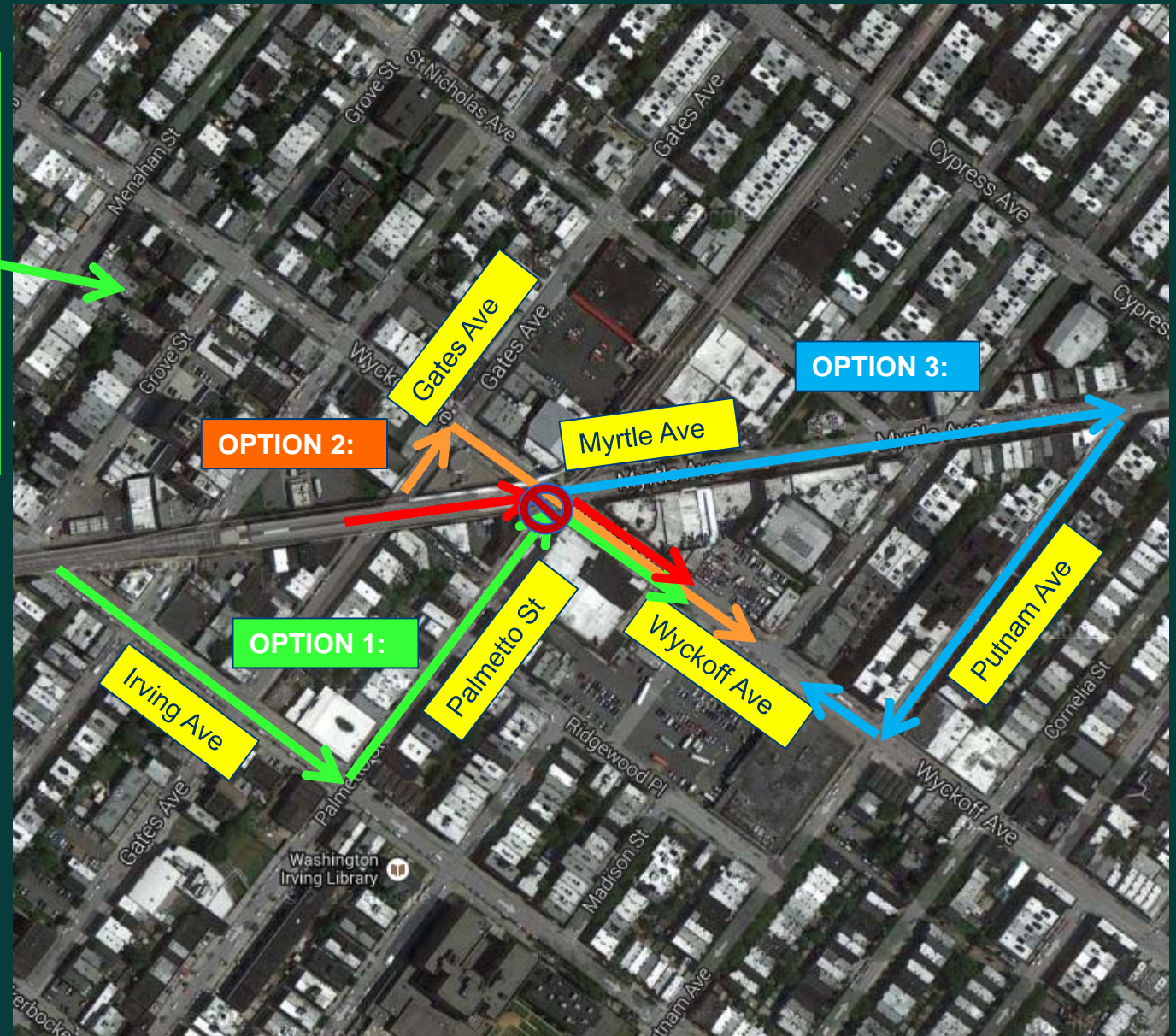
Ban right turns from
E/B Myrtle Ave
onto
S/B Wyckoff Ave



Peak hour volumes:

8:00a-9:00a: 38

6:00p-7:00p: 86



Safety Improvements

Completed:

- New, brighter street lighting under the elevated train installed in January 2014

Under review:

- Install flashing yellow warning lights on the subway support columns

In progress:

- Leading Pedestrian Interval under investigation for possible installation
- Working with BID to maintain painted extensions
- Working with NYCDOT Safety Education department to create pedestrian safety materials for distribution



Benefits of Proposal

- Painted curb extensions shorten crossing distances, tighten intersection, align skewed streets and slow vehicle turns
- New crosswalk across Myrtle Ave accommodates pedestrian desire line and makes pedestrians crossing under the elevated train more visible
- Turn bans reduce conflicts between pedestrians and vehicles and remove dangerous truck turns from high pedestrian intersection
- New street lighting and warning lights help improve visibility under the elevated train and around subway support columns



Proposed Conditions: painted curb extension on Flatbush Ave at Sterling Pl in Brooklyn



Questions?

Thank
You

Contact:

Queens Borough Commissioner's Office at 212-839-2510 or qbc@dot.nyc.gov
Brooklyn Borough Commissioner's Office at 718-222-7259