

Canarsie Park Connector

E 76th St and Paerdegat Av N from Flatlands Av to Seaview Av



Commissioner Polly Trottenberg, New York City Department of Transportation
Brooklyn Community Board 18, February 19, 2014



Canarsie Park Connector

Background

- **2009:** Belt Parkway bridge and Greenway reconstruction
- **2010:** Community requested alternative routes to Canarsie Pier along Parks
- **2012:** Green Streets improvement at Paerdegat 1st St
- **2013:** Milling/repaving of Paerdegat Av N
- **2014: Jamaica Bay Greenway Implementation Plan**

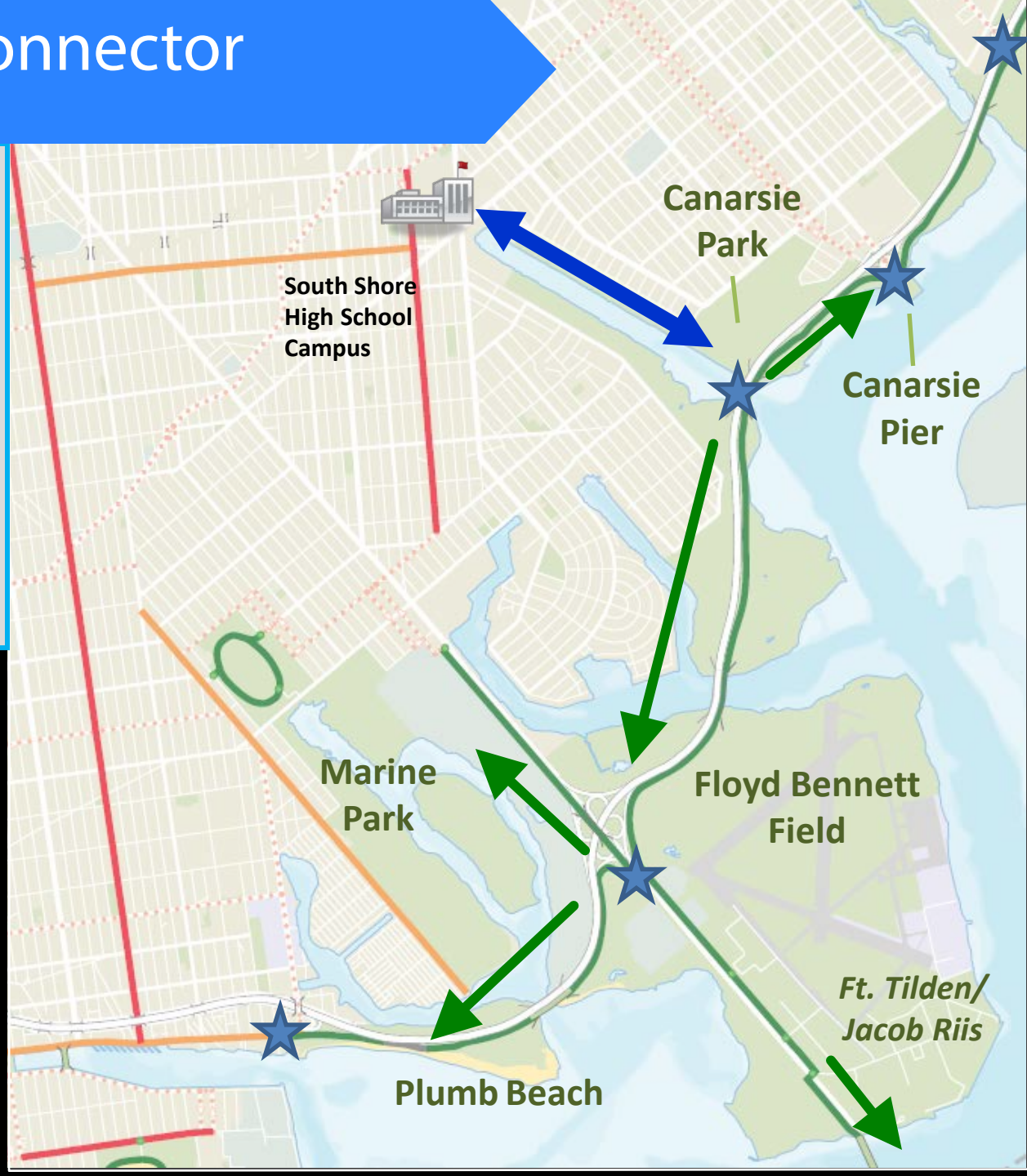


Canarsie Park Connector

Background: Context

Connections to Recreational Amenities

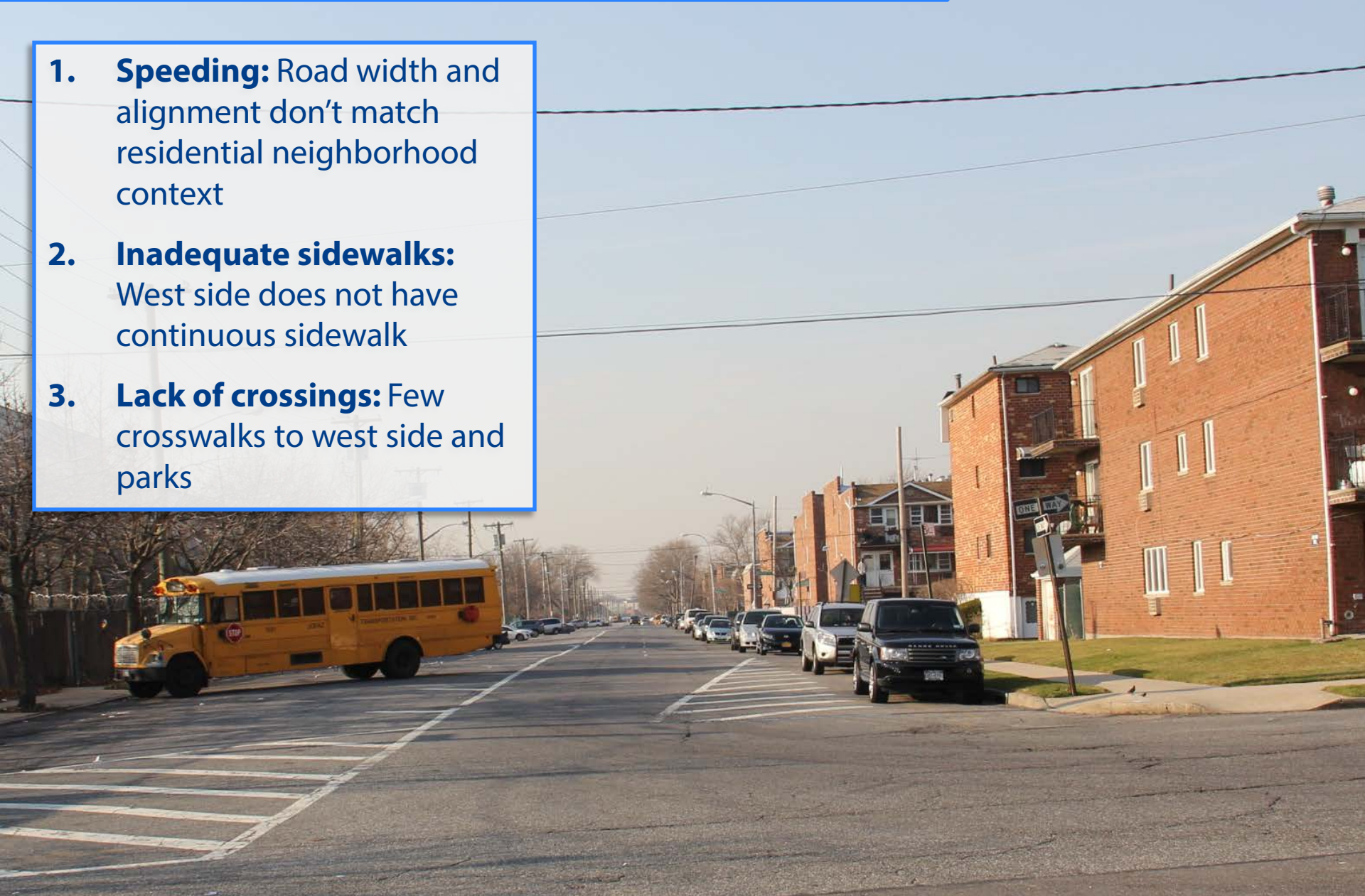
- Access to Greenway ★
- Links to regional recreational destinations
- Connects local parks to neighborhoods and schools



Canarsie Park Connector

Transportation Issues

- 1. Speeding:** Road width and alignment don't match residential neighborhood context
- 2. Inadequate sidewalks:** West side does not have continuous sidewalk
- 3. Lack of crossings:** Few crosswalks to west side and parks

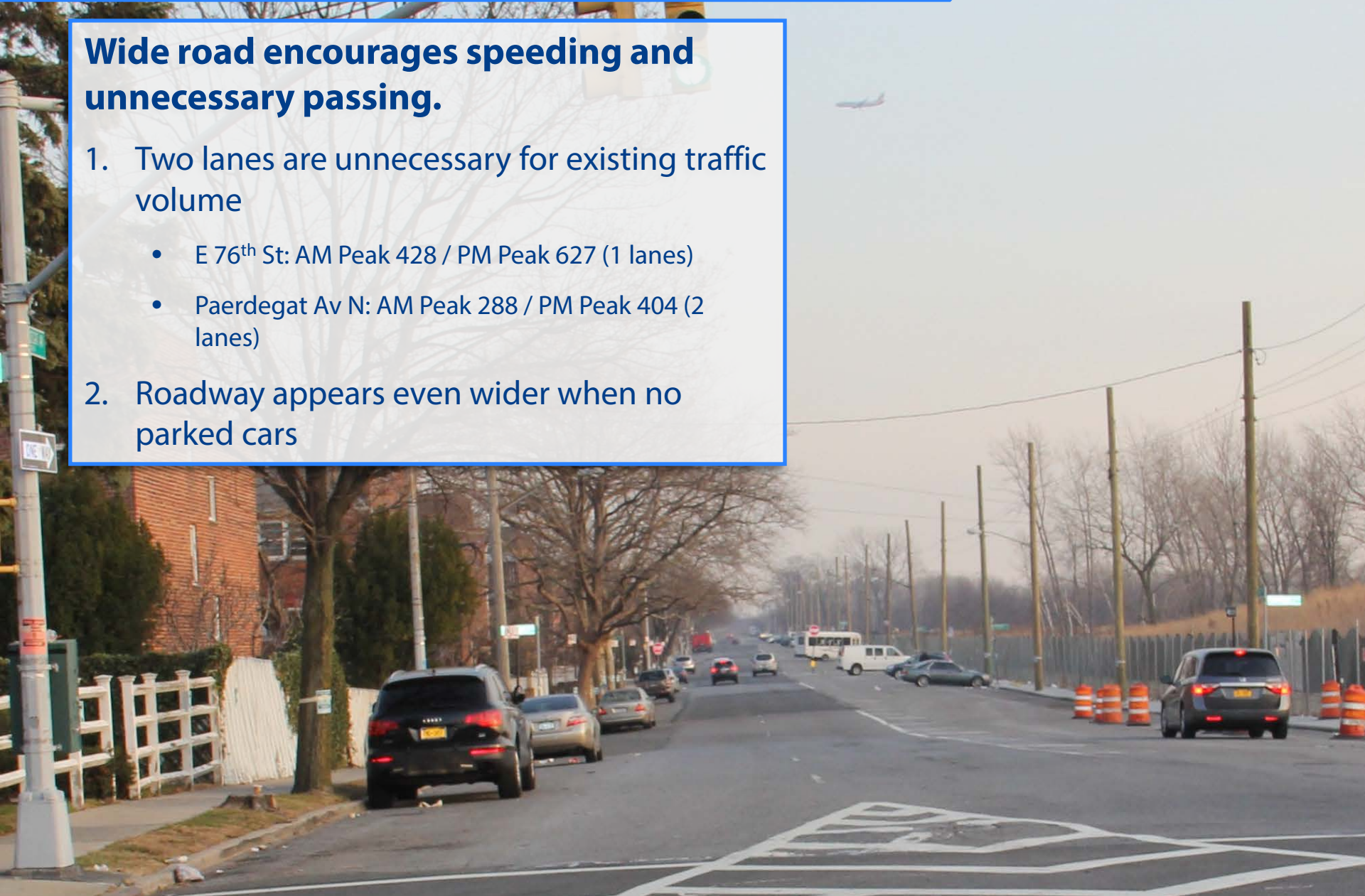


Canarsie Park Connector

Transportation Issue #1: Speeding

Wide road encourages speeding and unnecessary passing.

1. Two lanes are unnecessary for existing traffic volume
 - E 76th St: AM Peak 428 / PM Peak 627 (1 lanes)
 - Paerdegat Av N: AM Peak 288 / PM Peak 404 (2 lanes)
2. Roadway appears even wider when no parked cars



Canarsie Park Connector

Transportation Issue #2: Inadequate Sidewalks

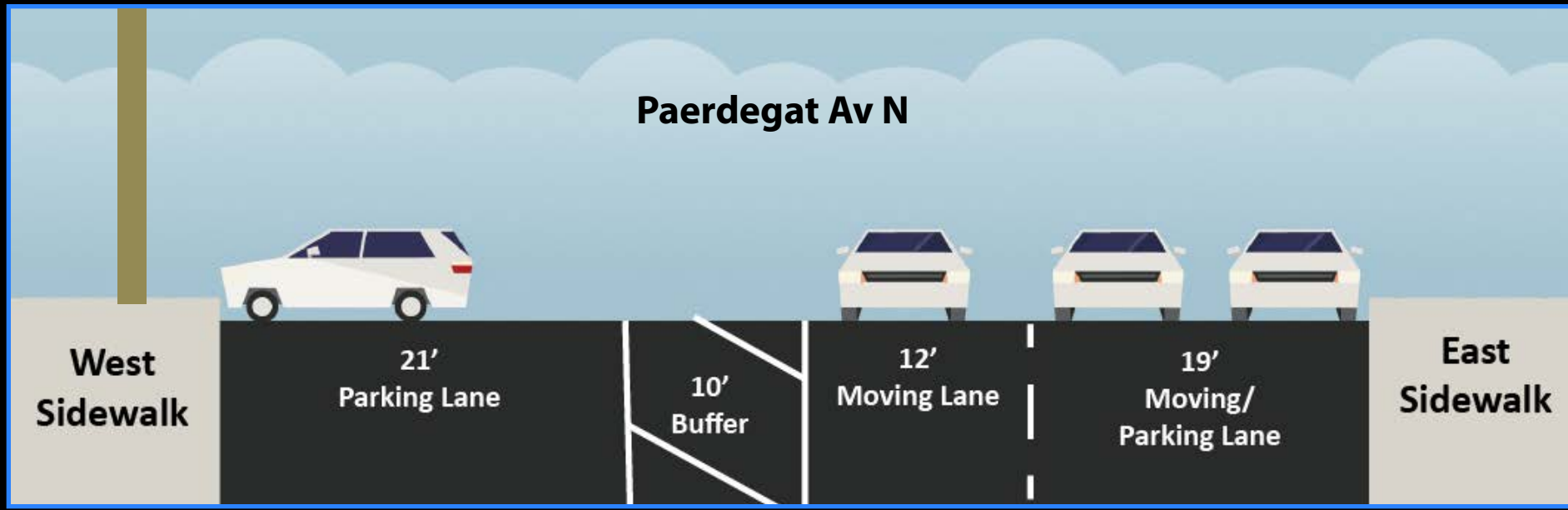
West sidewalk inadequate

- Telephone poles, signs, etc., block pedestrians
- Effective width 0' in some places
- West side provides access to parks, parking and various destinations
 - Sebago Canoe Club
 - Paerdegat Athletic Club
 - Marina/Yacht Club



Canarsie Park Connector

Existing Conditions: Paerdegat Av N

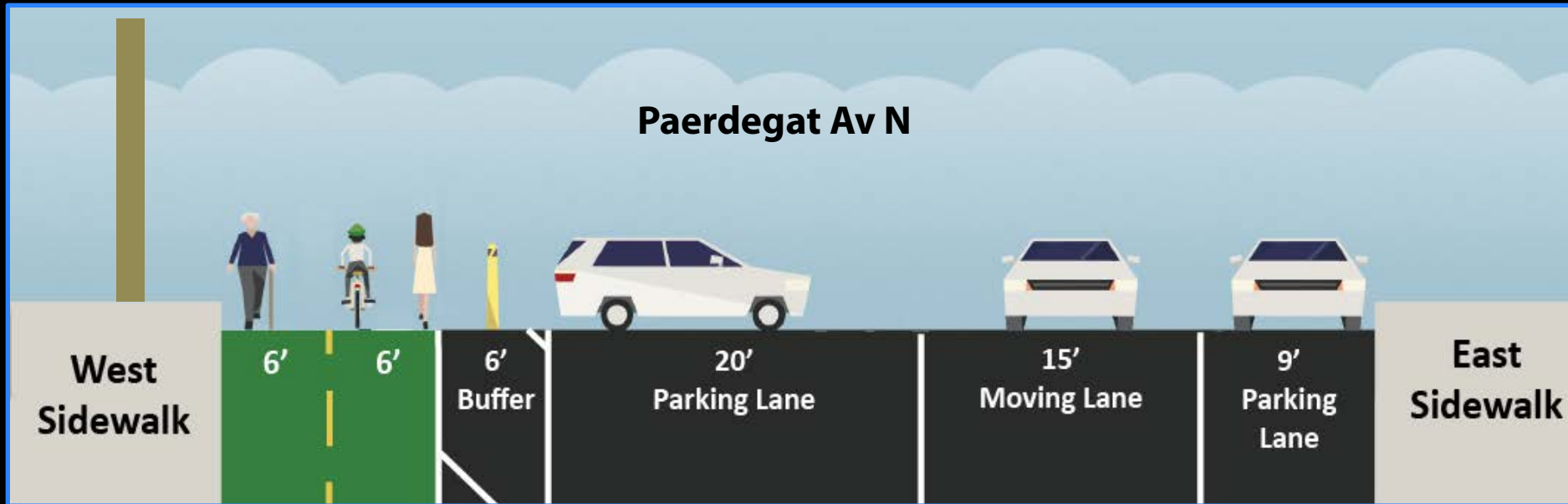


West sidewalk obstructed/ inadequate

Wide roadway encourages speeding

Canarsie Park Connector

Proposed Solutions: Paerdegat Av N



Narrow the roadway by creating space for cyclists and pedestrians

Space for planters

Match capacity to volume

Narrow the roadway by marking parking lane

Canarsie Park Connector

Existing Conditions: E 76th St

E 76th St, north of Paerdegat 1st St

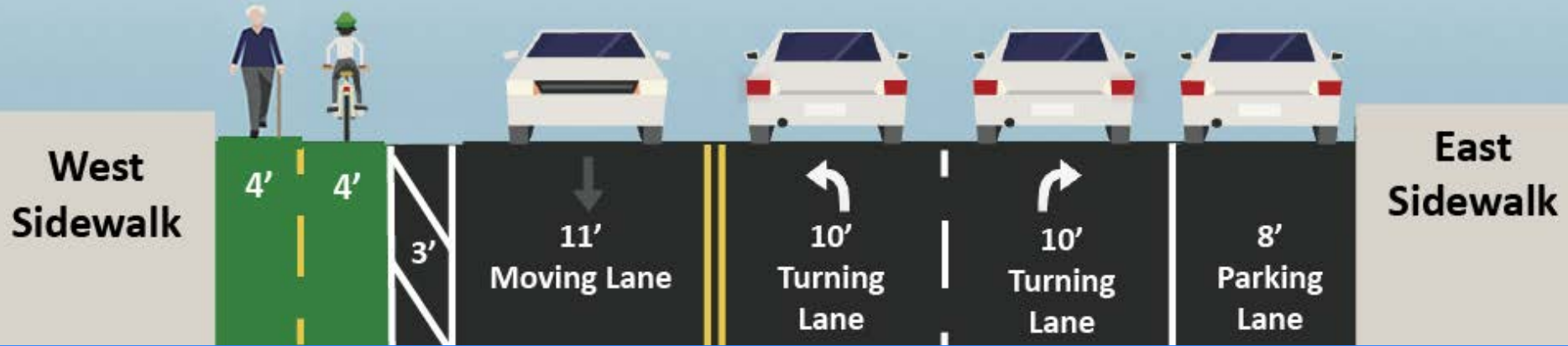


Extra-wide lane encourages speeding

Canarsie Park Connector

Proposed Solutions: E 76th St

E 76th St, north of Paerdegat 1st St



Narrow the roadway by creating space for cyclists and pedestrians

Narrow the roadway by marking parking lane

Canarsie Park Connector

Transportation Issue #3: Lack of crossings

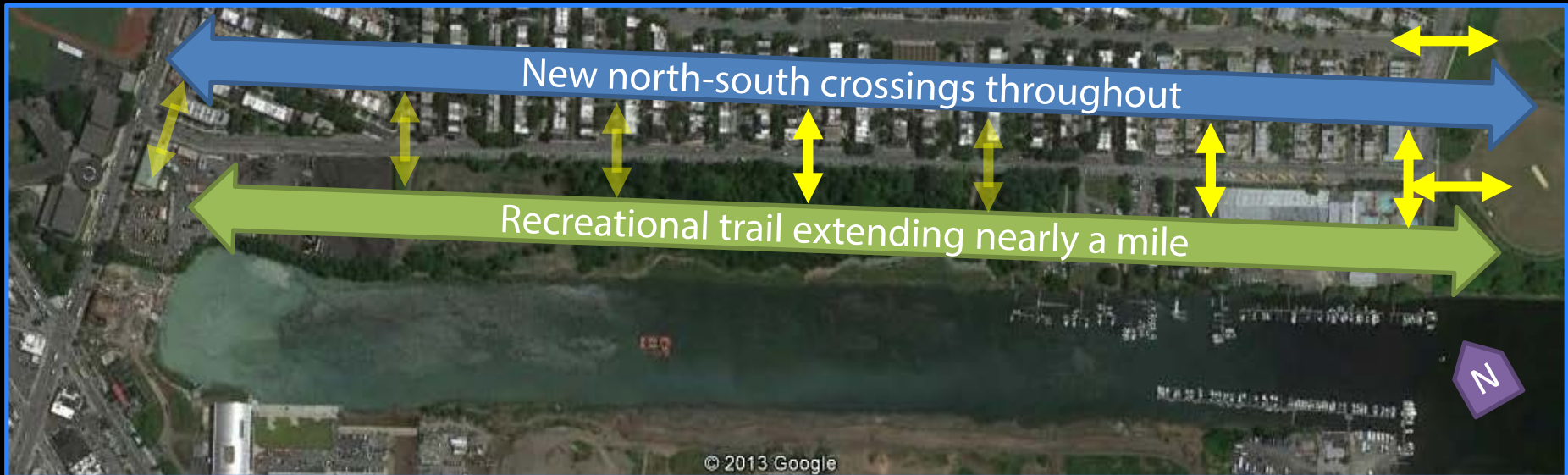


Nighborhood not connected to waterfront uses

- Only 4 crosswalks for just under a mile
- Few north-south crosswalks along the corridor
- No connections to Canarsie Park

Canarsie Park Connector

Proposed Solution



Create
continuous
path on west
side

Install
additional N-S
crossings
throughout

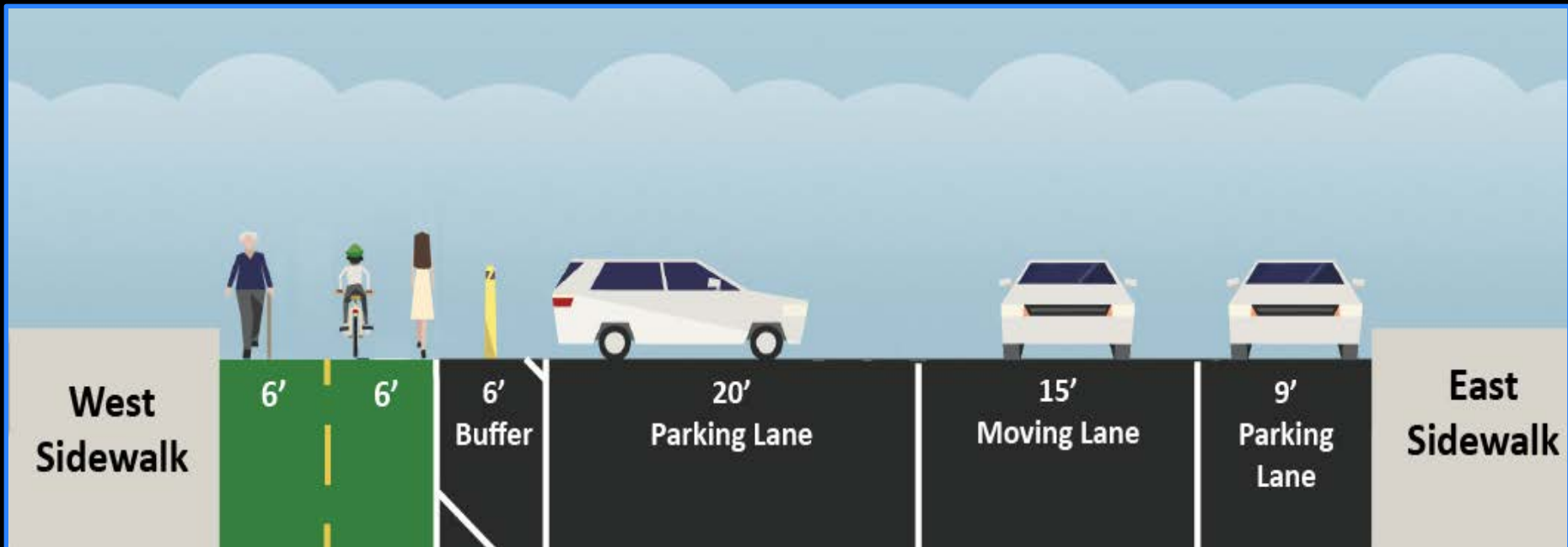
Create 4
additional
crossings to
parks

Canarsie Park Connector

Proposed Solutions

Summary:

1. Simplify alignment along entire corridor
2. Install multi-use path on west-side
3. Connect neighborhood to path and park with new crossing



Canarsie Park Connector

Questions?



Thank
You!