

# Morningside Avenue

2013





# Project Background

## Morningside Avenue - W 116th St to W 126th St, MN Injury Summary, 2007-2011 (5 Years)

	Total Injuries	Severe Injuries	Fatalities	KSI
Pedestrian	27	4	0	4
Bicyclist	9	1	0	1
Motor Vehicle Occupant	66	4	0	4
Total	102	9	0	9

Fatalities, 01/01/2007-7/1/2013 : None

Source: Fatalities: NYCDOT  
Injuries: NYSDOT  
KSI: Persons Killed or  
Severely Injured

2 pedestrian fatalities in 2006

Morningside Ave narrows to 42'  
south of W 116<sup>th</sup> St and to 38' north  
of W 126<sup>th</sup> St

Morningside Ave separates park  
from community to the east

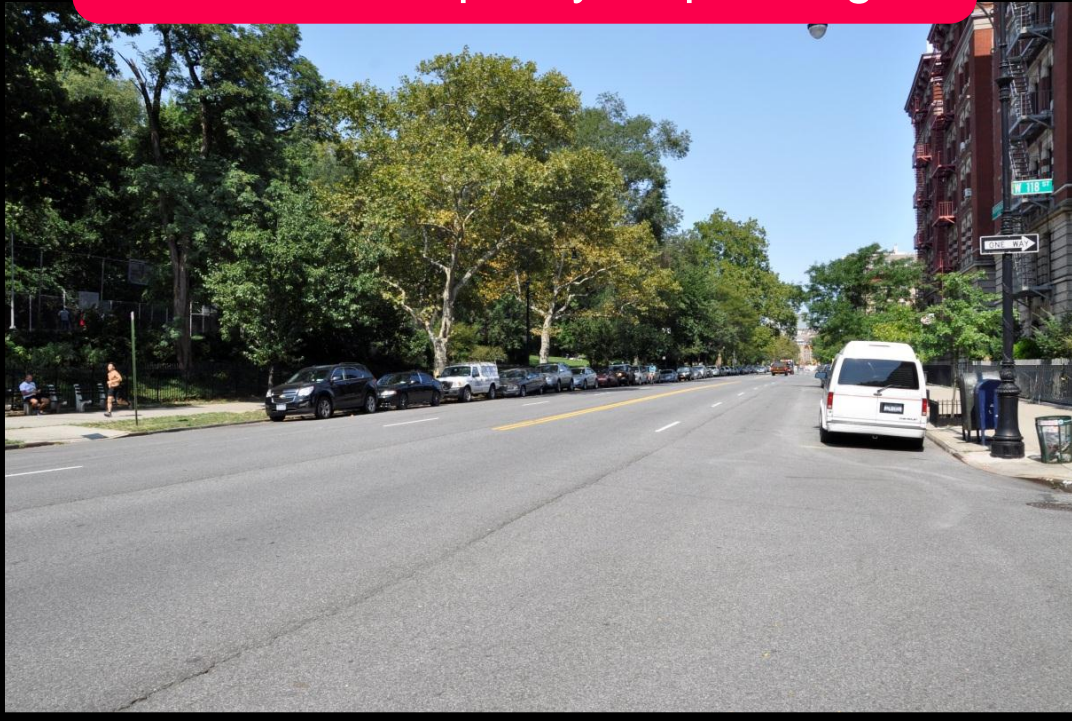




# Morningside Ave Corridor

## Existing Conditions

60' roadway with low traffic volumes  
= excess capacity + speeding



58% of northbound vehicles and  
66% of southbound were speeding  
during recent speed survey

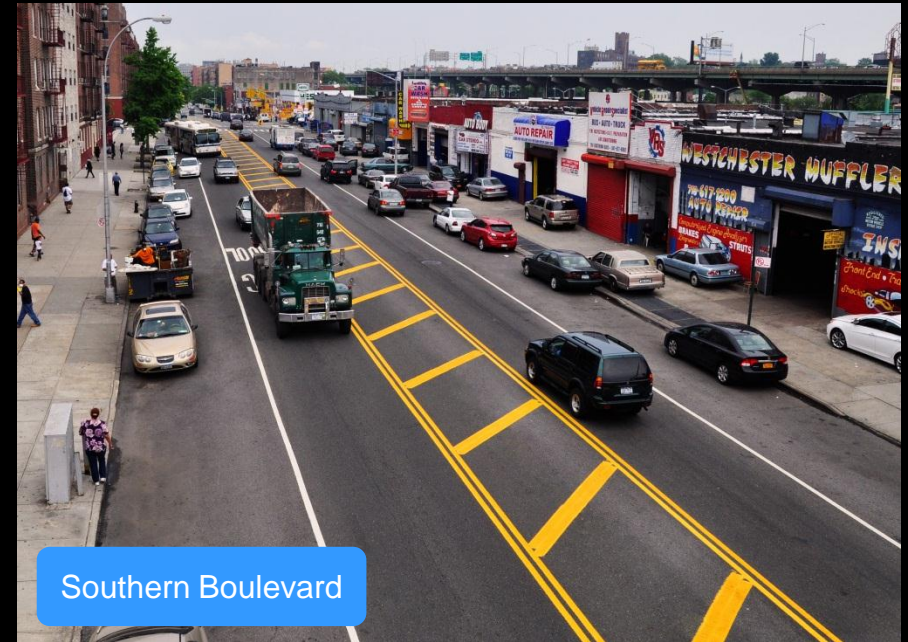




# Safety Results from Similar Treatments

## 4 lane to 3 lane Traffic Calming

PROJECT	CRASHES WITH INJURIES (% CHANGE)
WEST 6 <sup>TH</sup> STREET	-24%
EMPIRE BOULEVARD	-15%
ALLERTON AVENUE	-28%
GERRITSEN AVENUE	-40%
SOUTHERN BOULEVARD	-20%
RANDALL AVENUE	-22%
MACOMBS ROAD	-44%





# Morningside Ave and W 118<sup>th</sup> St/W 117<sup>th</sup> St

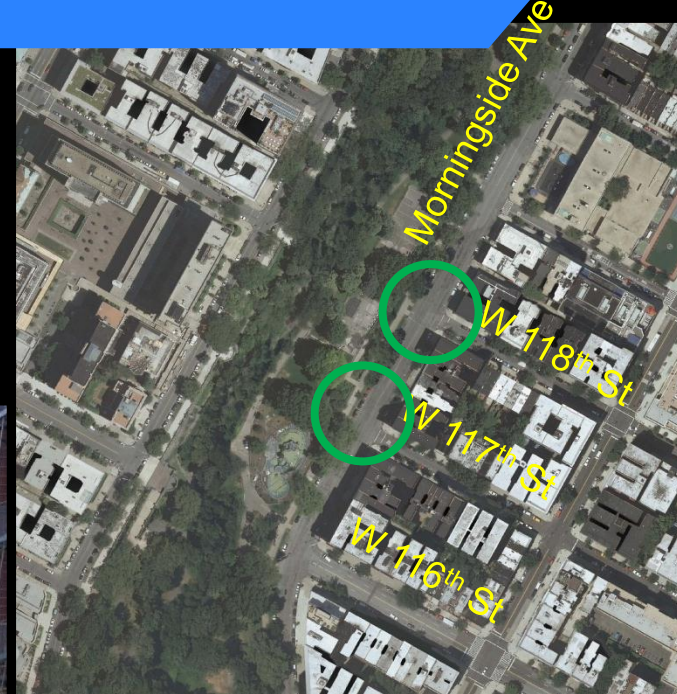
## Existing Conditions

No crosswalks or vehicle control at playground entrances

Park Entrance

60 feet

View North at W 118<sup>th</sup> St





# Morningside Ave and W 120<sup>th</sup> St

## Existing Conditions

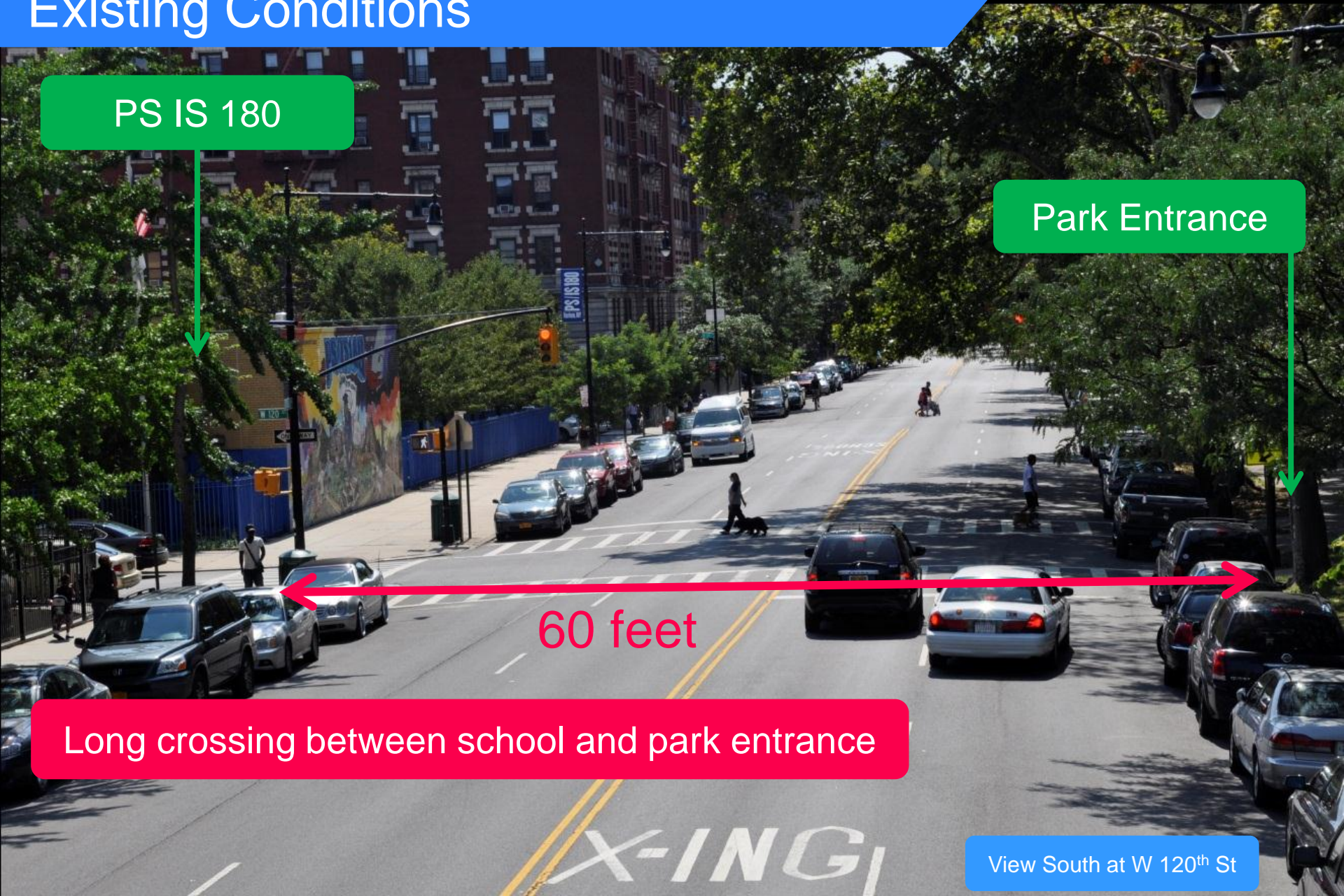
PS IS 180

Park Entrance

60 feet

Long crossing between school and park entrance

View South at W 120<sup>th</sup> St



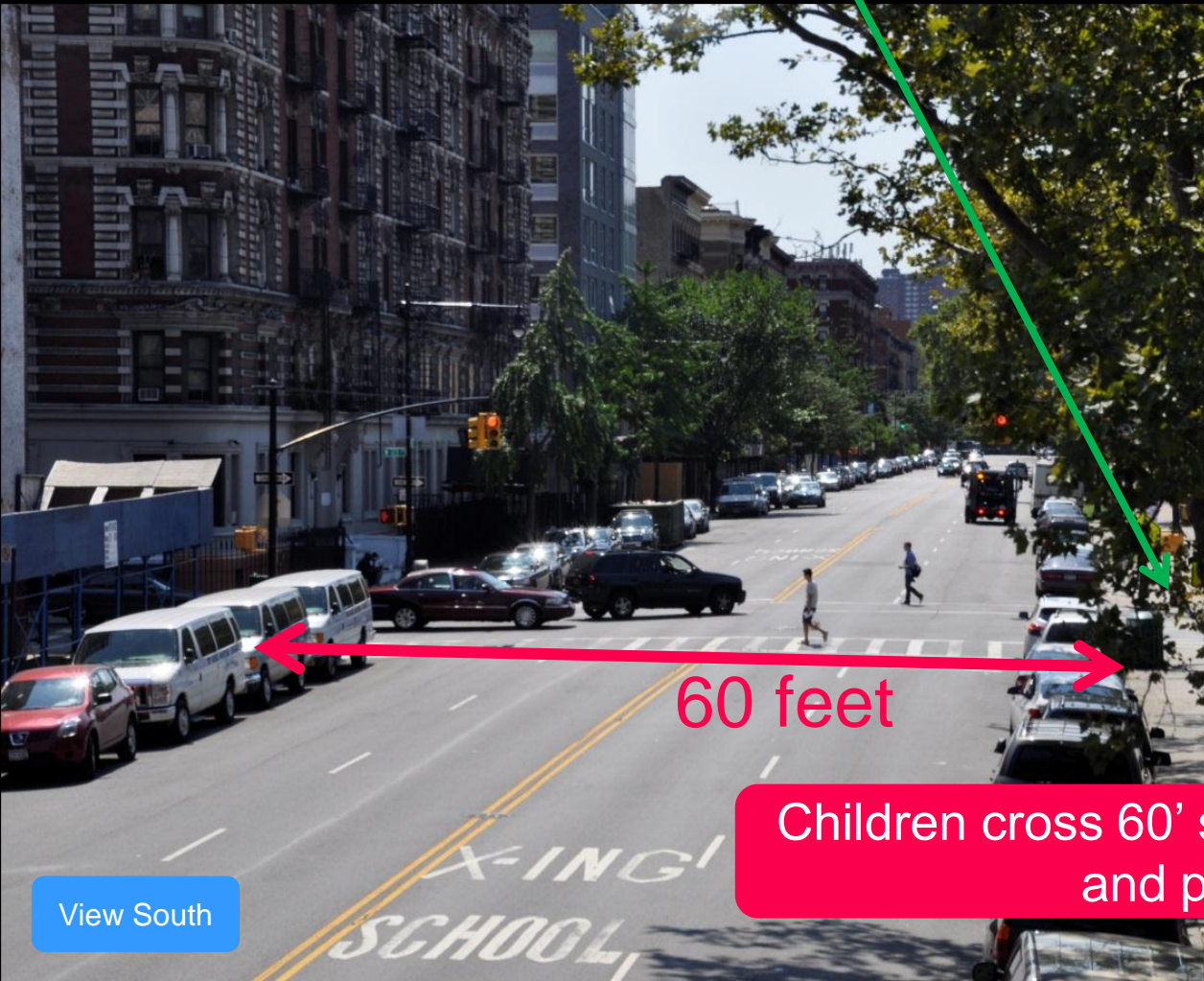


# Morningside Ave and W 123<sup>rd</sup> St

## Existing Conditions

Park Entrance

PS 125



Children cross 60' street between residential and park/ PS 125

# Morningside Ave

## Existing Corridor Conditions

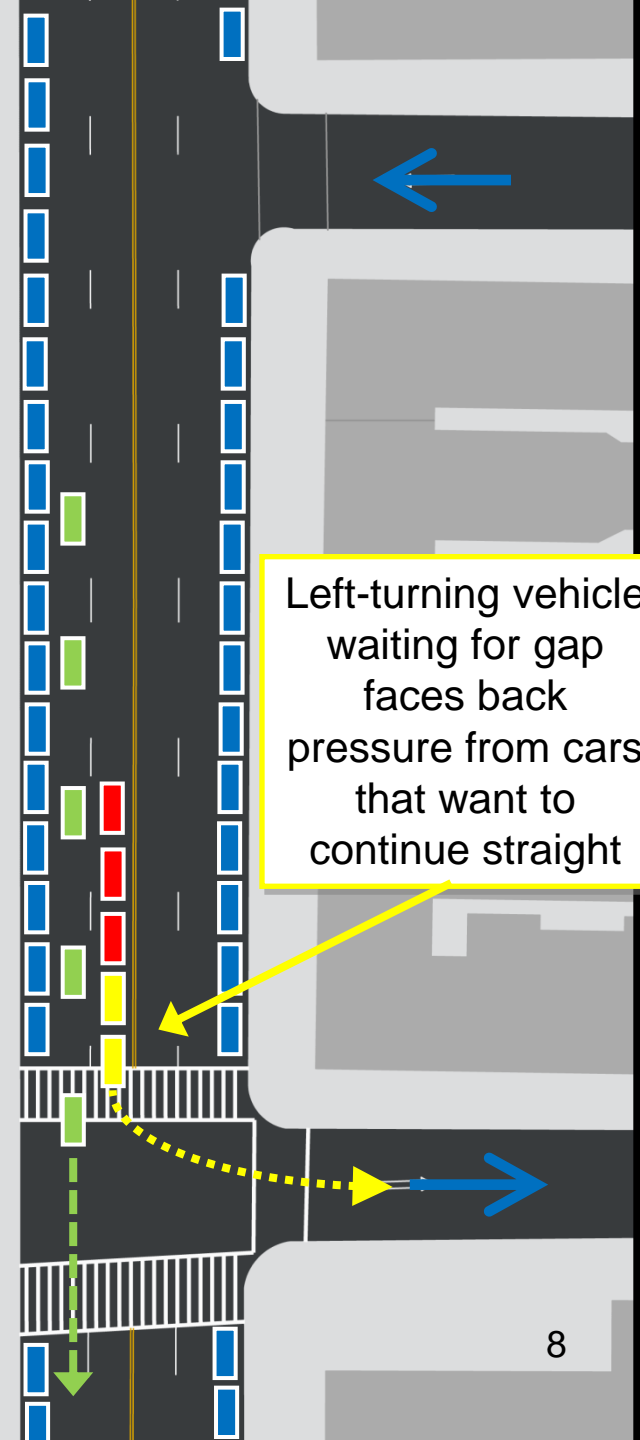
Volumes  
385 AM/325 PM  
10 vehicles per signal cycle

### Legend

Parked vehicle  
Moving thru vehicle  
Left turning vehicle  
Stopped blocked vehicle



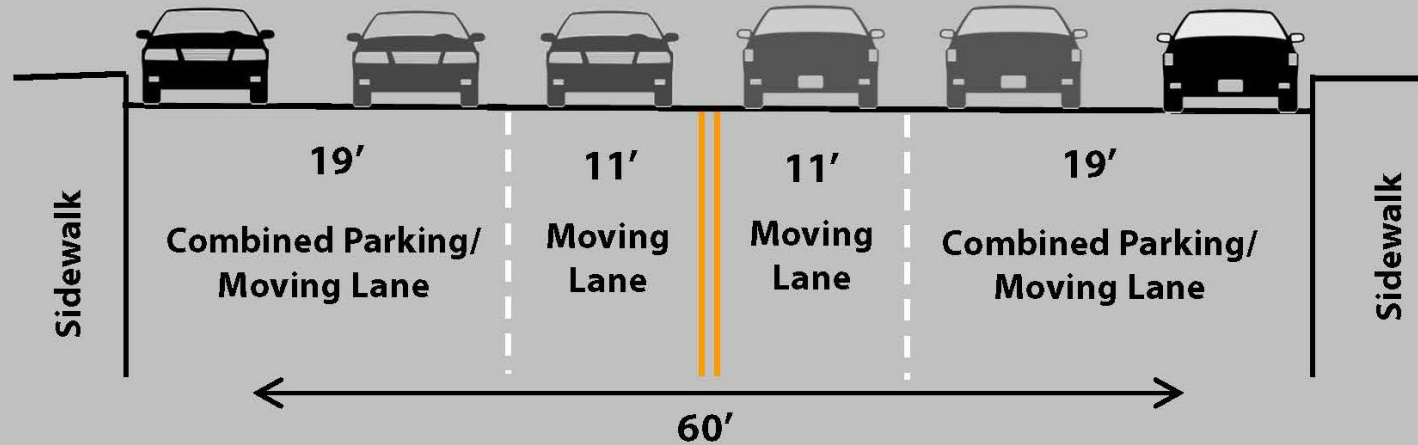
Left-turning vehicle  
waiting for gap  
faces back  
pressure from cars  
that want to  
continue straight



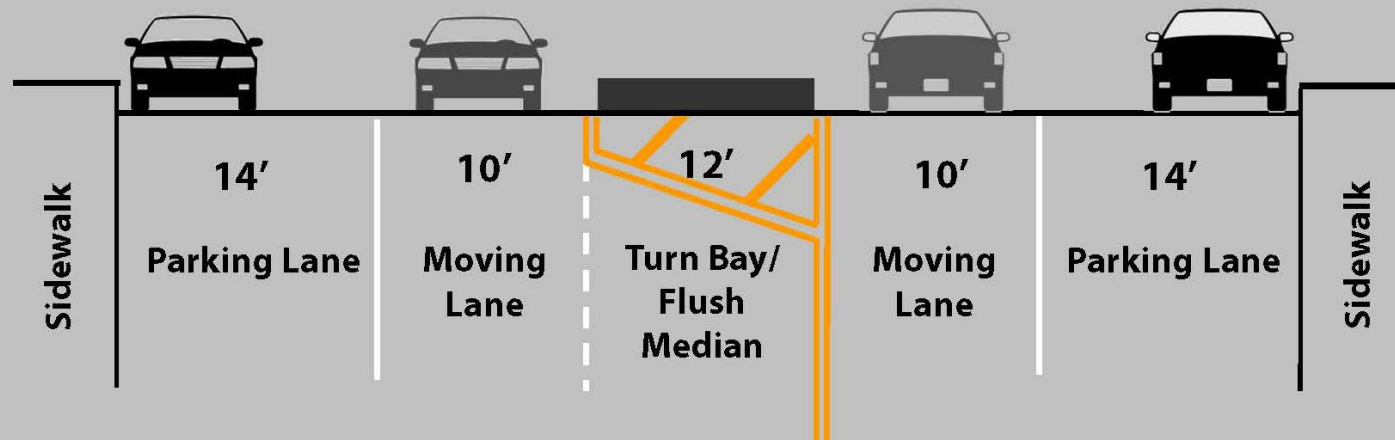


# Morningside Avenue Profile

## EXISTING



## PROPOSED





# Morningside Ave

## Proposed Corridor Conditions

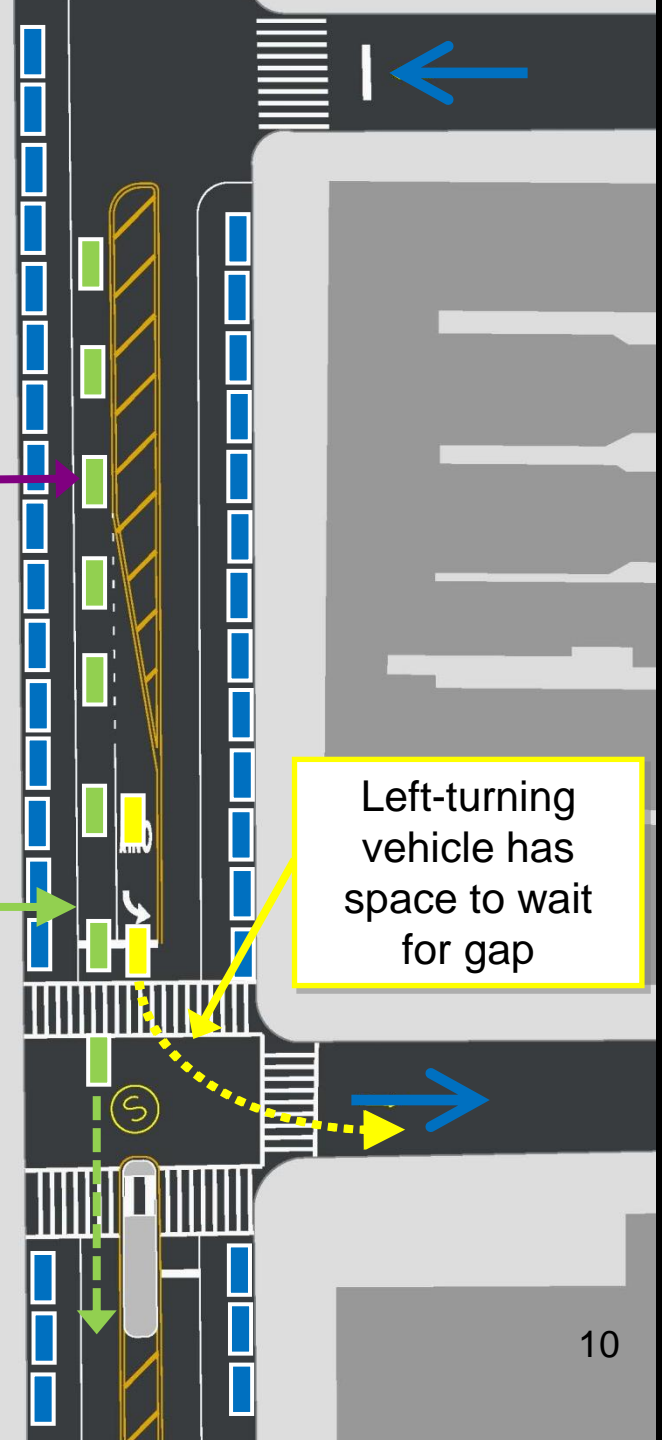
Better organization  
and lane assignments  
allow for same volume  
with safety  
improvements

Thru traffic has a clear  
uninterrupted path

Left-turning  
vehicle has  
space to wait  
for gap



PARK ENTRANCE





# Morningside Avenue

## Example of Road Striping



West 6<sup>th</sup> Street, Brooklyn

One lane in  
each direction

Wide parking lanes



# Morningside Avenue Proposal

Left turn bay

New Stop Sign at  
W 118<sup>th</sup> St

Lenox Ave & W 125<sup>th</sup> St

Safer two part crossing

PARK ENTRANCE

PARK ENTRANCE

MORNINGSIDE AV

W 118 ST



MORNINGSIDE AV

W 117 ST



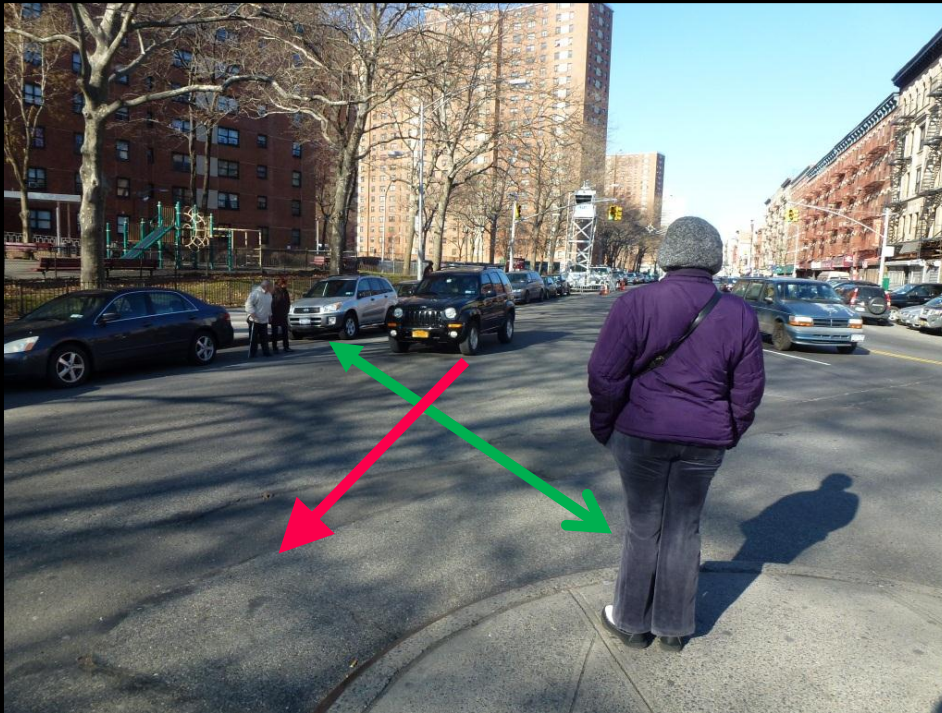
12



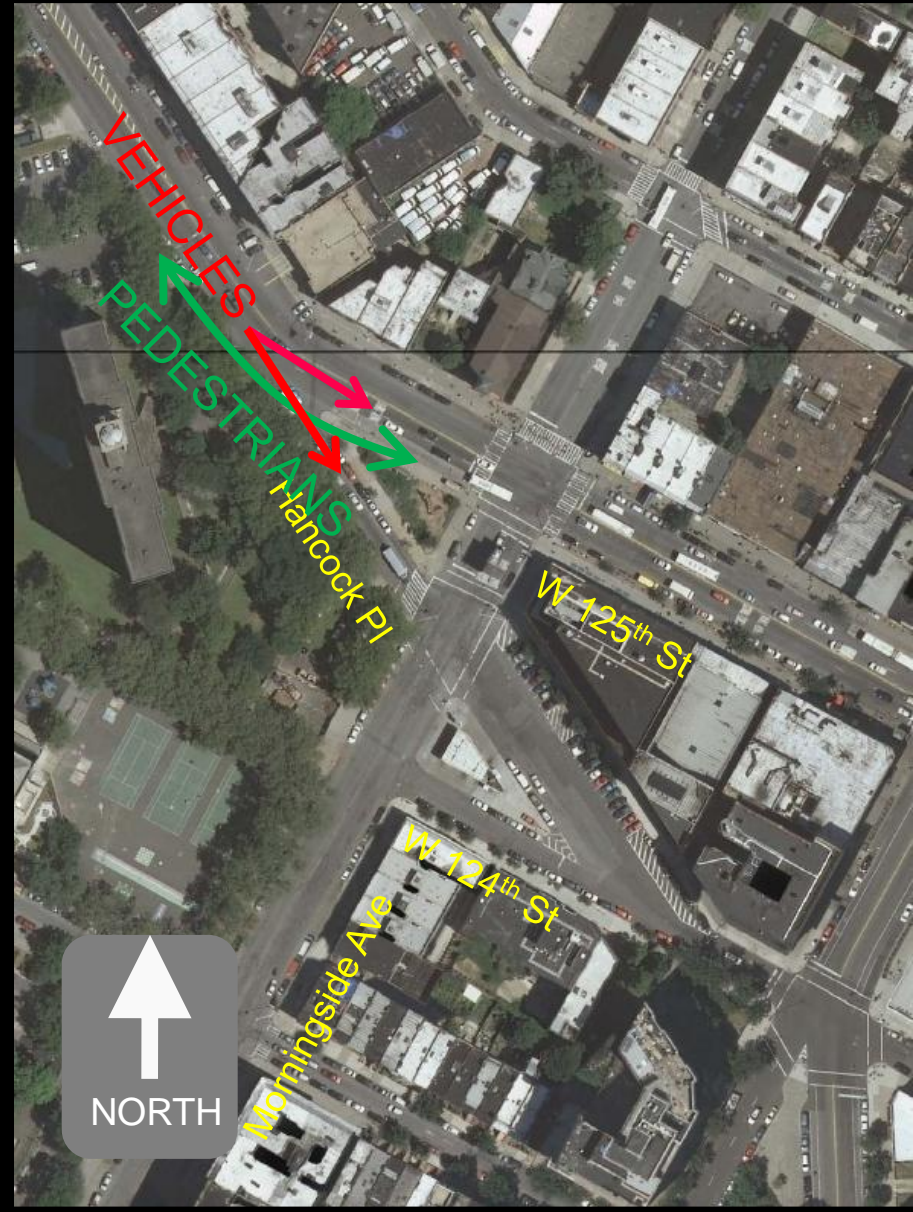
# Morningside Ave and Hancock Pl

## Existing Conditions

Pedestrian desire line along W 125<sup>th</sup> Street puts them in conflict with cars entering Hancock Place

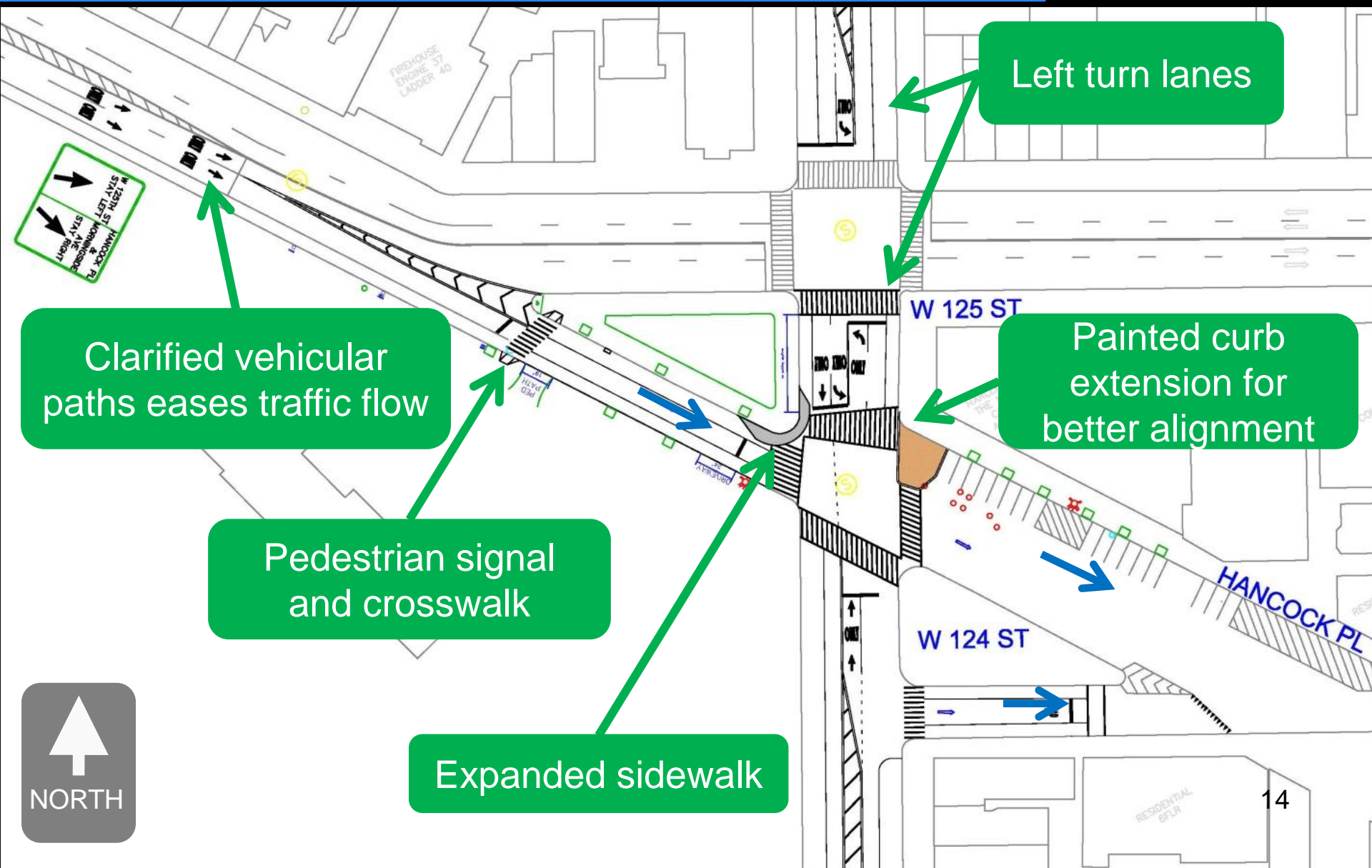


Over 500 pedestrians cross a hour during PM peak





# Morningside Ave and Hancock Pl Proposal





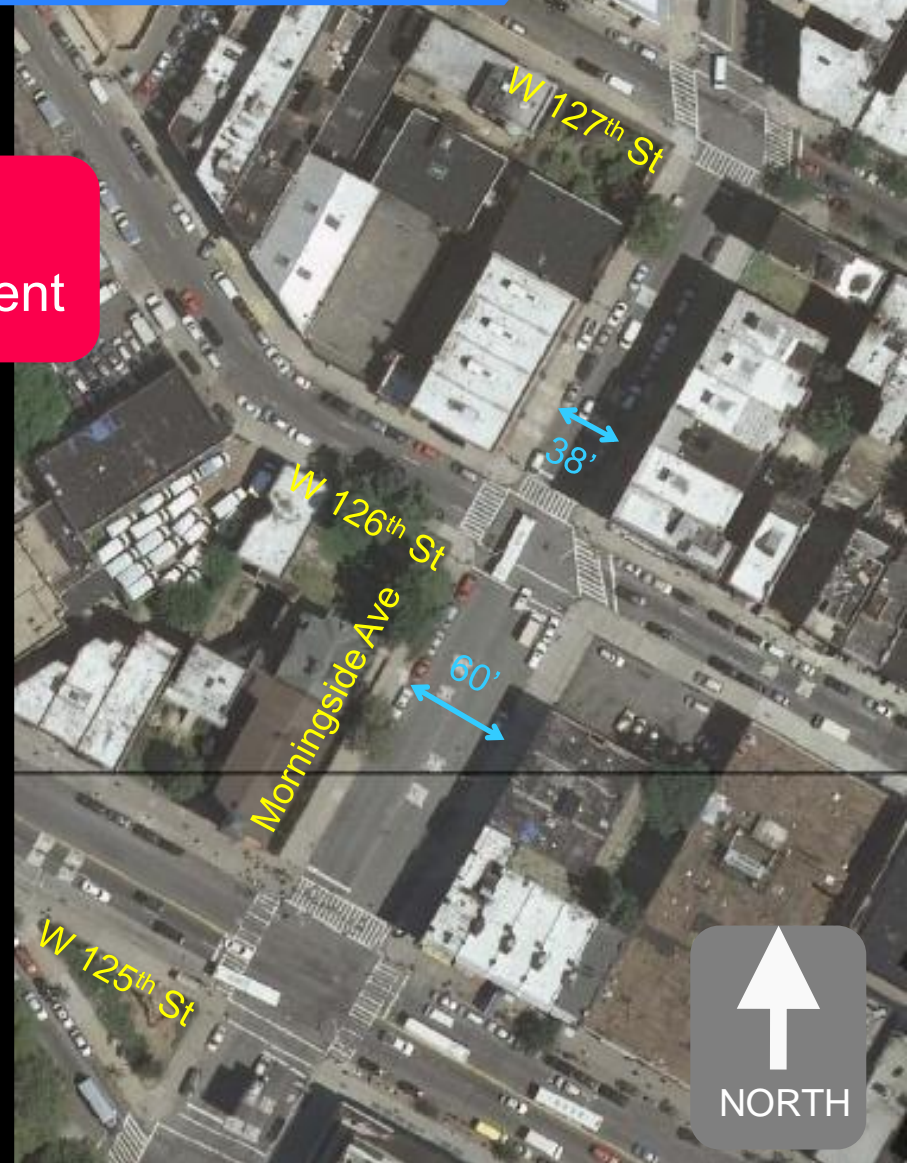
# Morningside Ave and W 126<sup>th</sup> Street

## Existing Conditions

North of W 126<sup>th</sup> Street, Morningside narrows to 38' creating a skewed alignment



Five injuries at this intersection  
in 5 year period from 2007-2011  
Two were pedestrian





# Morningside Ave and W 126<sup>th</sup> Street Proposal

New left turn lanes

←  
W 126 ST



Paint neckdown improves alignment



Delancey Street, MANHATTAN

# Plan Summary

## Improvements for Morningside Avenue:

1. Reduce travel lanes from four to three lanes, one in each direction with left-turn lanes as needed between W 116<sup>th</sup> Street and W 126<sup>th</sup> Street.
2. Construct pedestrian islands on Morningside Avenue at W 123<sup>rd</sup> Street, W 120<sup>th</sup> Street, W118th Street and W 117<sup>th</sup> Street
3. Extend concrete curb on existing GreenStreet at Morningside Avenue and Hancock Place
4. Extend NE curb with colored coating at intersection of Morningside Ave and Hancock Place
5. Extend SE curb with colored coating at intersection of Morningside Avenue and W 126<sup>th</sup> Street
6. Add stop sign on Morningside and W 118<sup>th</sup> Street
7. Add pedestrian signal and new crosswalk at Hancock Place







Thank  
You

[www.nyc.gov/dot](http://www.nyc.gov/dot)