

# Metropolitan Ave & 71<sup>st</sup> Ave Intersection Improvements

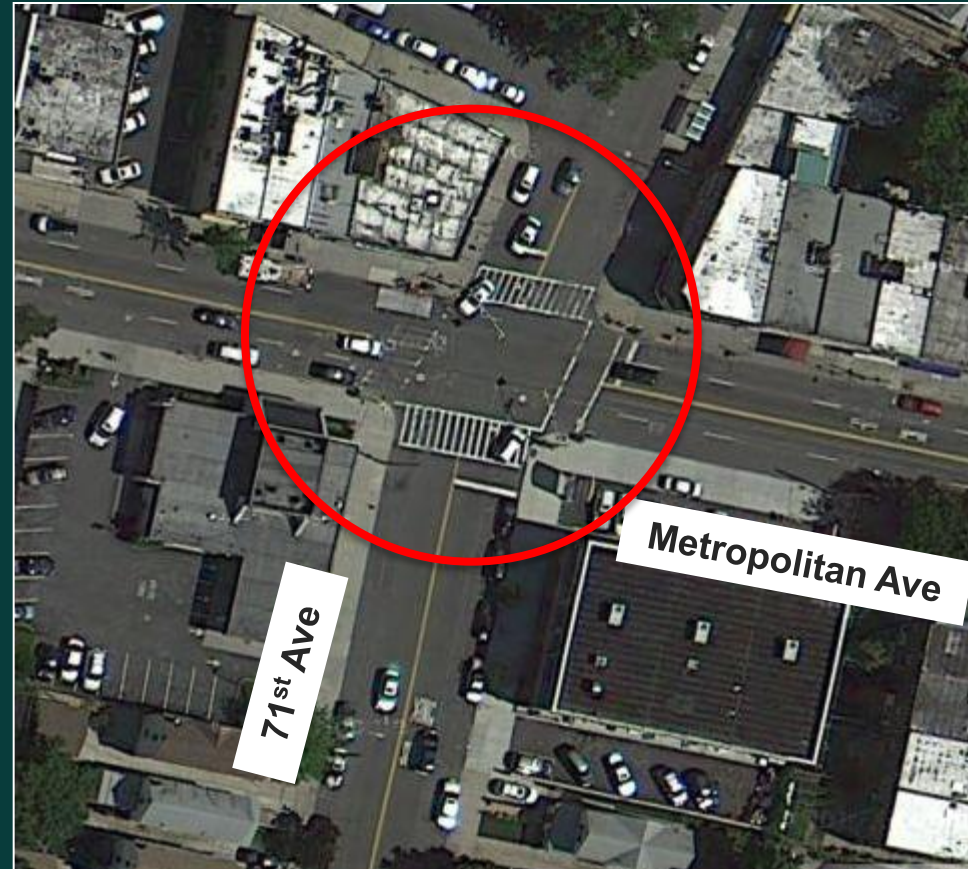
Community Board 6 – September 12, 2013

2013



# Project Background

- High Pedestrian Crash Location (2011)
- Pedestrian fatality in 2011
  - North crosswalk
  - Pedestrian crossing with signal
  - Hit & Run
- Community request for intersection improvements
- Skewed intersection



# Crash Data

## Metropolitan Avenue At 71st Avenue, QN

### Injury Summary, 2007-2011 (5 Years)

|                        | Total Injuries | Severe Injuries | Fatalities | KSI |
|------------------------|----------------|-----------------|------------|-----|
| Pedestrian             | 8              | 3               | 1          | 4   |
| Bicyclist              | 1              | 0               | 0          | 0   |
| Motor Vehicle Occupant | 8              | 2               | 0          | 2   |
| Total                  | 17             | 5               | 1          | 6   |

Fatalities, 01/01/2007-8/19/2013 : 1

Source: Fatalities: NYCDOT  
Injuries: NYSDOT  
KSI: Persons Killed or Severely Injured

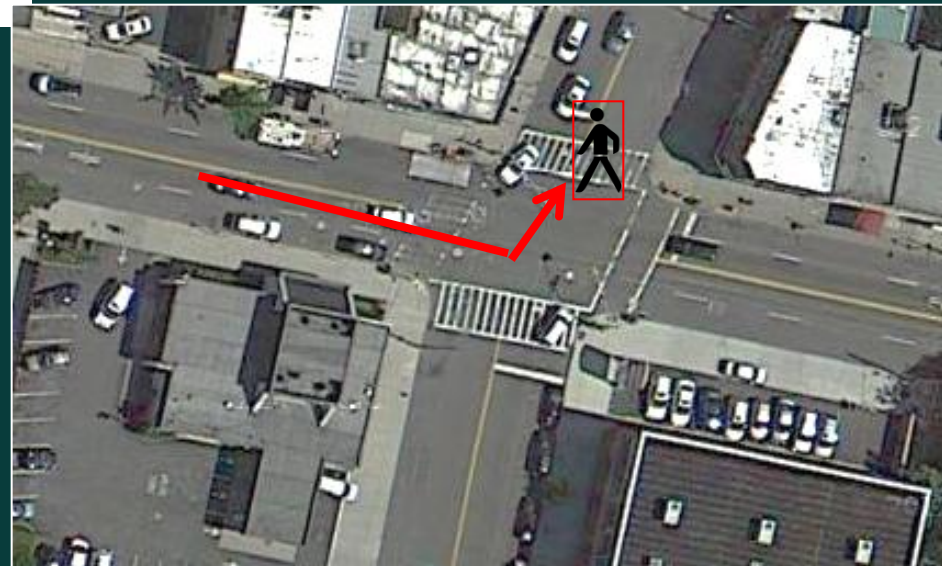
|                         |   |
|-------------------------|---|
| Pedestrian:             | 1 |
| Bicyclist:              | 0 |
| Motor Vehicle Occupant: | 0 |

1 pedestrian fatality (2011)

- Car traveling EB made left turn from Metropolitan on to 71<sup>st</sup> Ave; struck and killed pedestrian crossing in north crosswalk; hit & run

17 injuries (2007-11)

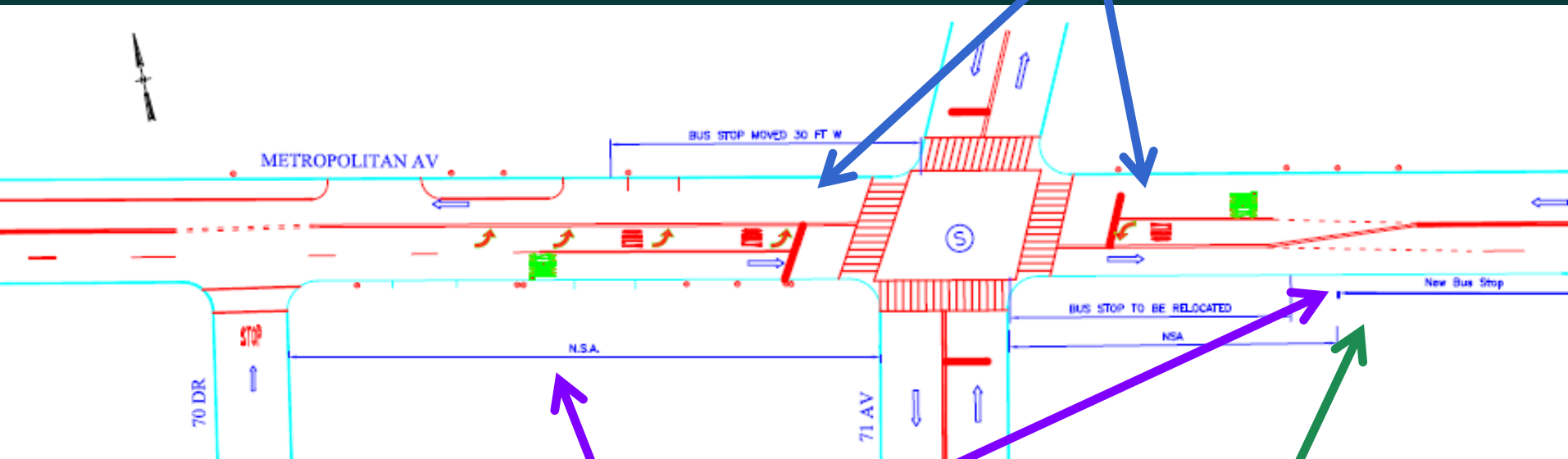
- 60% pedestrian injuries while crossing with signal (turning car failing to yield)



# Proposal

Travel lanes cleared to ease congestion

Install two left turn bays to relieve "back pressure"

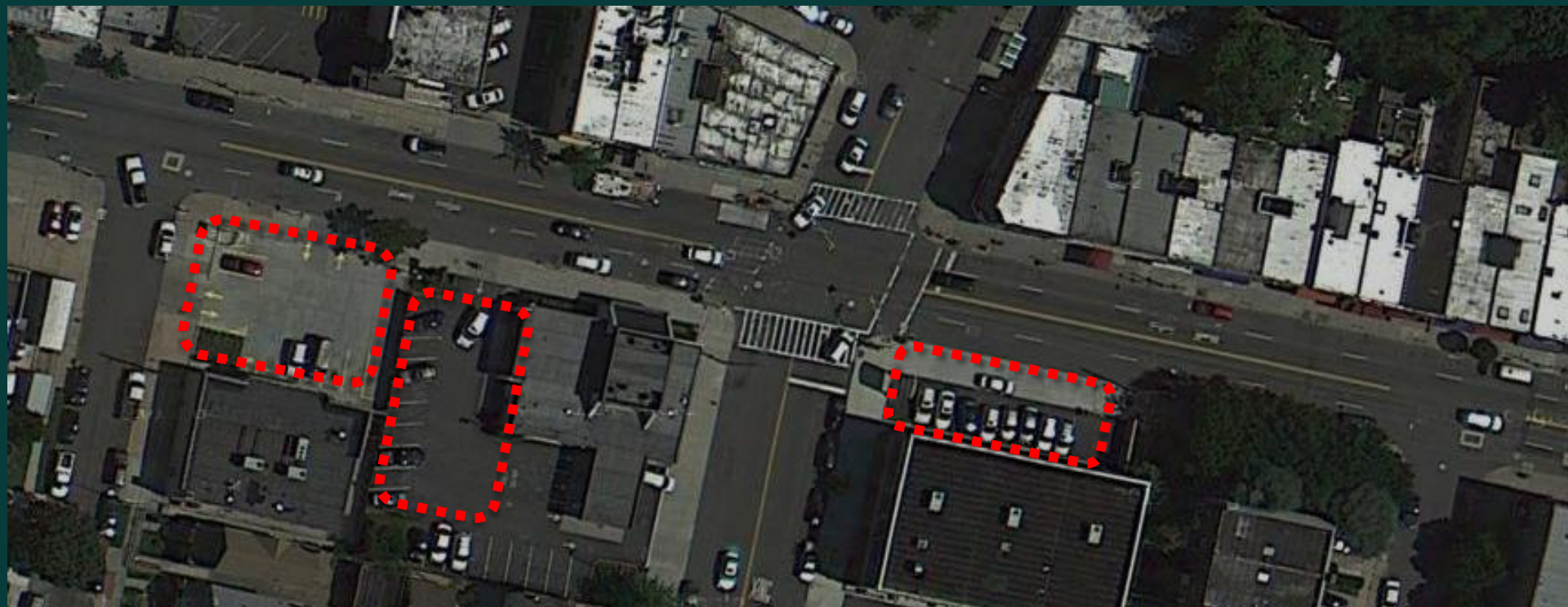


Replace ~14 meter parking spaces with No Standing Anytime to clear travel lanes

Relocate Q54 bus stop 80 feet east from 71 Ave

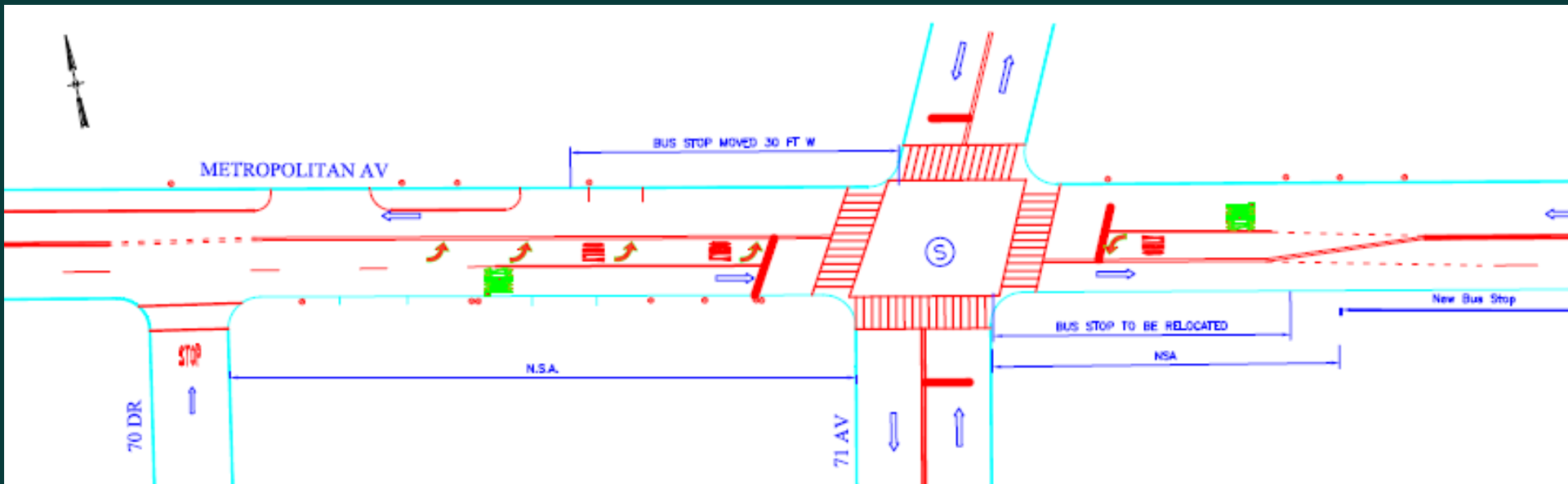
# Existing Parking

- Sample time lapse parking survey showed only small fraction of spaces occupied (both week and weekend days)
- Muni-meter data shows only 16% of parking occupied on the south curb east of 71<sup>st</sup> Ave (71 Ave-71 Rd) 45% south curb west of 71 Ave (71 Ave-70 Dr)
- Many businesses have parking lots along Metropolitan Ave



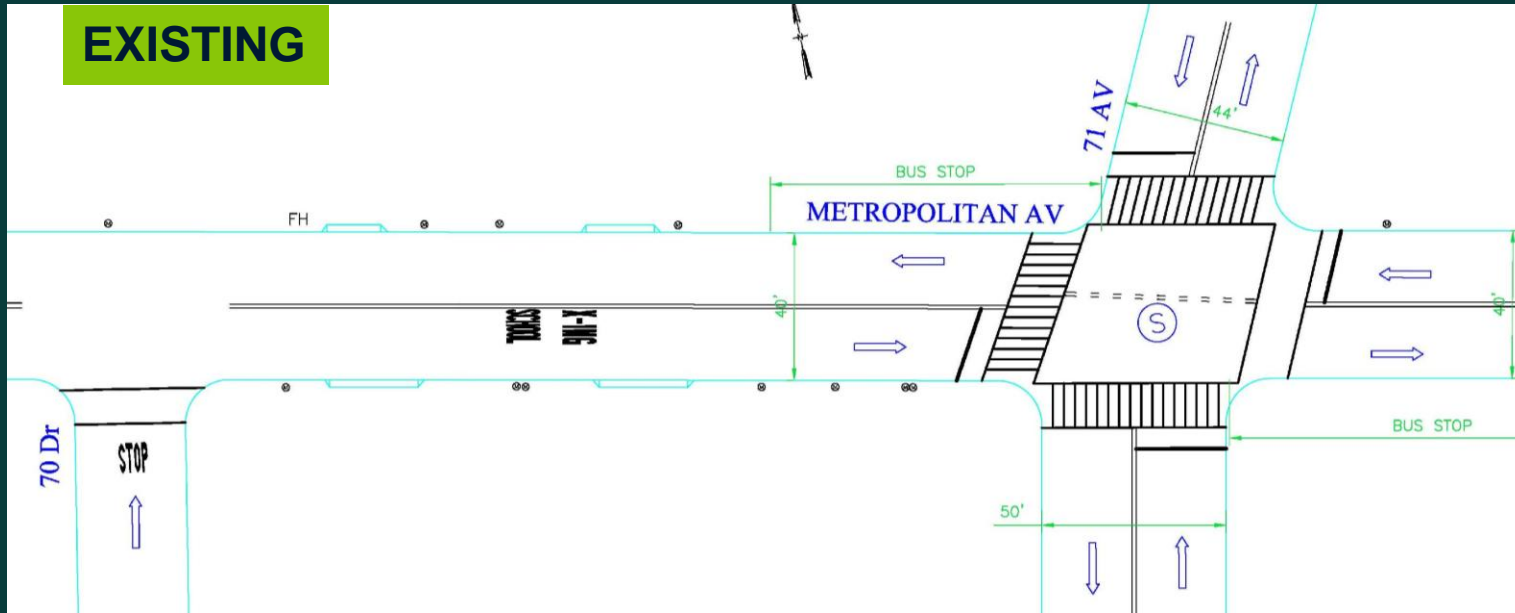
# Benefits

- Provides safer pedestrian crossings
- Creates simpler, safer left turns
- Turn lanes reduce “back pressure” for left turning vehicles
- Improves through traffic flow and eases congestion

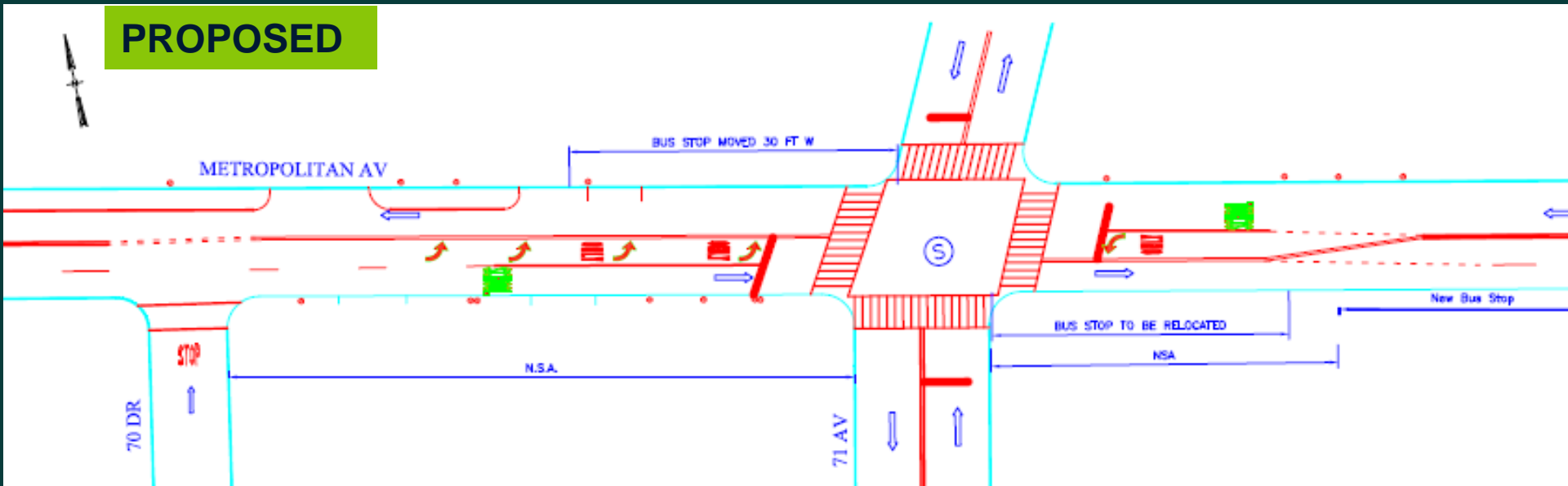


# Existing and Proposed Design

## EXISTING



## PROPOSED





Questions?

Thank  
You

Contact:

Queens Borough Commissioner's Office at [gbc@dot.nyc.gov](mailto:gbc@dot.nyc.gov) or 212-839-2510