

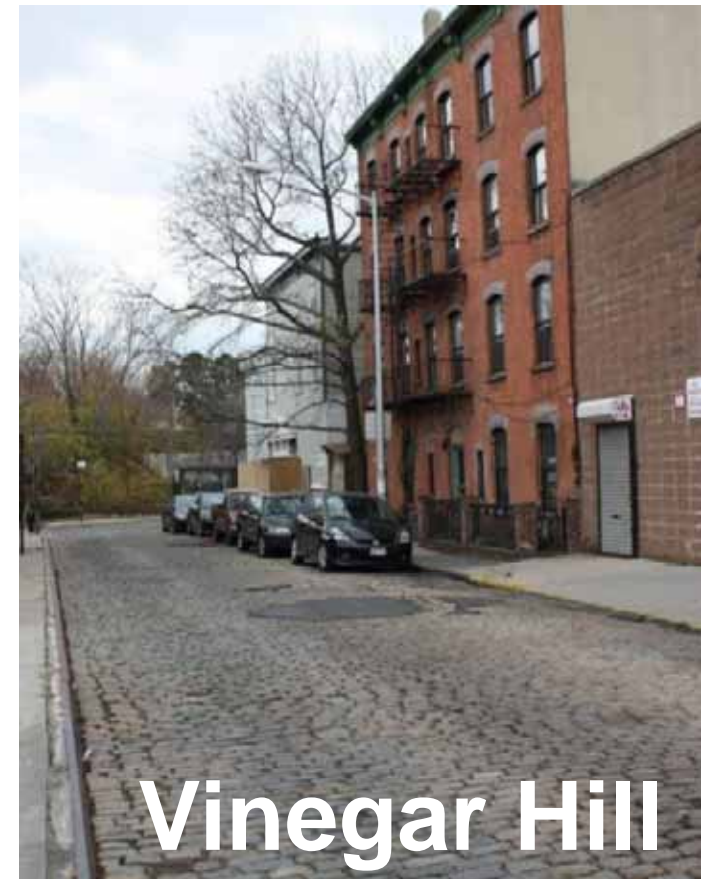
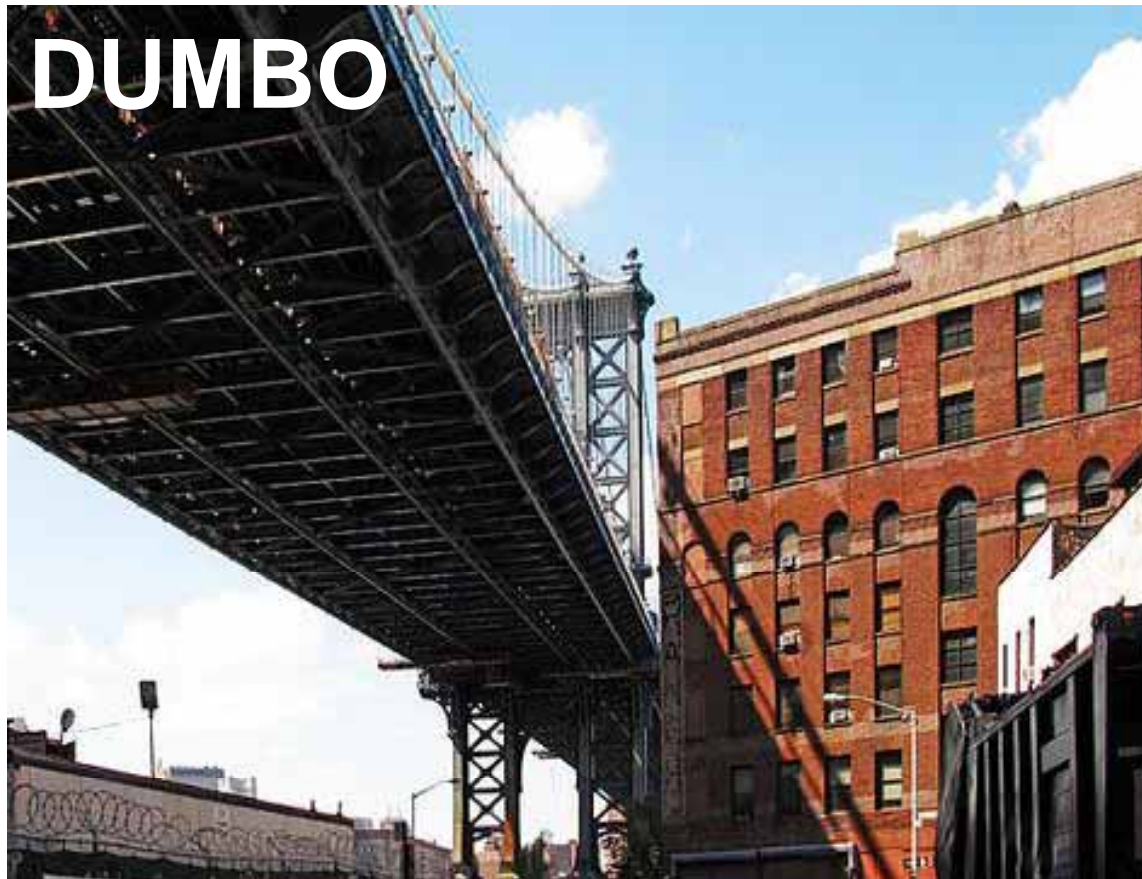
Reconstruction of DUMBO/Vinegar Hill Streets and Pearl Street Plaza COMMUNITY BOARD 2 PRESENTATION

July 22, 2013



Project Scope

Project Scope: Historic Districts



Project Scope: Sewer and Water

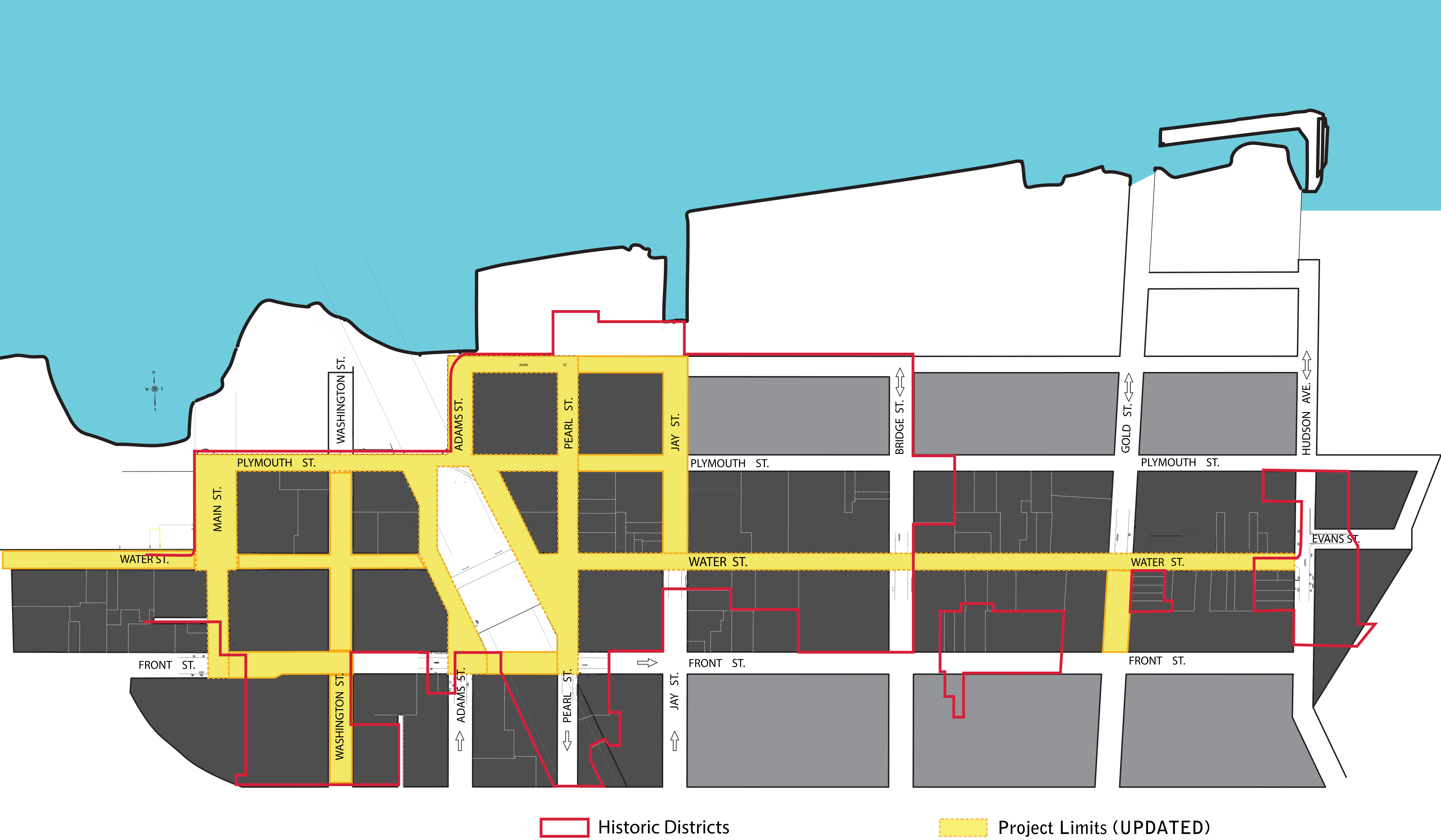


Project Scope: Street Repair



Project Scope: Public Plaza





Community Participation

DUMBO Design Competition: 2010

Public Workshops # 1: July 16, 2012

Public Workshop # 2: January 8, 2013

Public Workshop # 3: March 5, 2013

Cobble Mockup Viewing: July 1-18, 2013

Community Participation

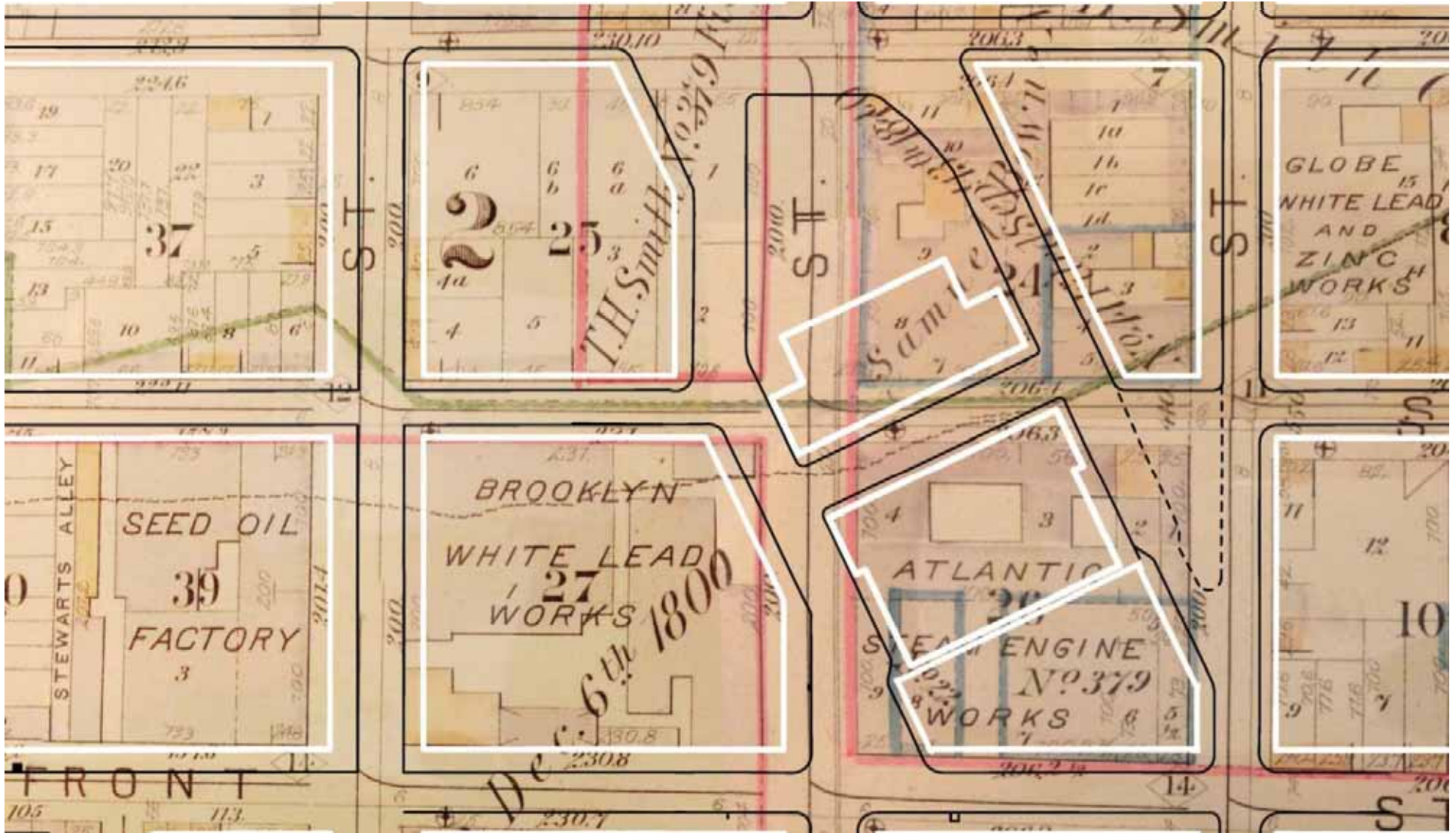


Historic Streets

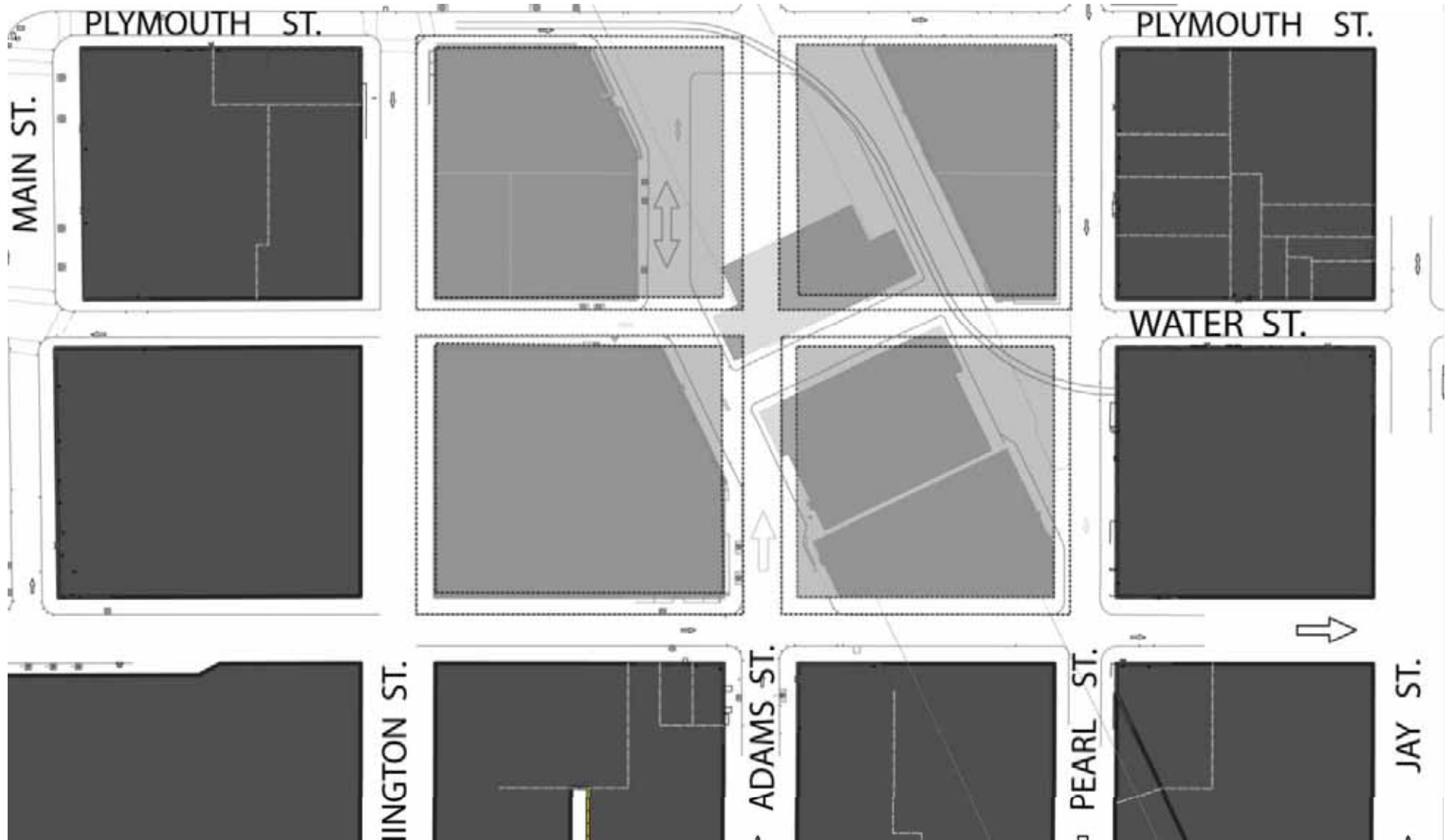
Historic Landscape: Narrative



Historic Landscape: Narrative



Historic Landscape: Narrative



Historic Landscape: Narrative



Jay Street Connecting Railroad (1909-1959)

Cobble Stone: Patterns



A variety of patterns creating street quilts placed over time

Cobble Stone: Existing Conditions



Cobble Stone: Existing Conditions



Context and Character



Photo shoots take advantage of the view corridors and the texture of the street and buildings



Stills from "Once Upon A Time in America", 1984 asphalt patches exist in the historic film

The Plaza and Anchorage



Brooklyn Bridge Park



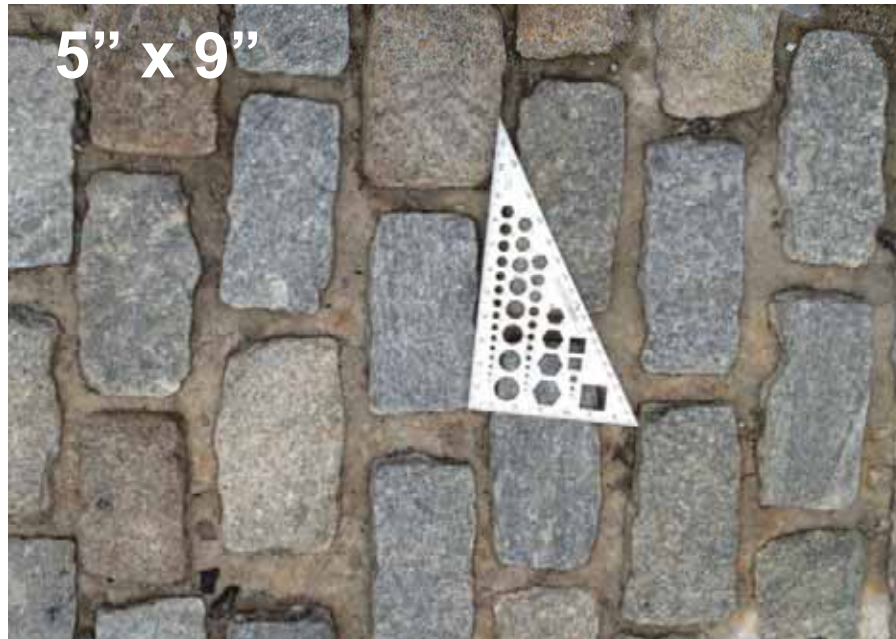
Photo Credit: Michael Minn

Brooklyn Waterfront Greenway



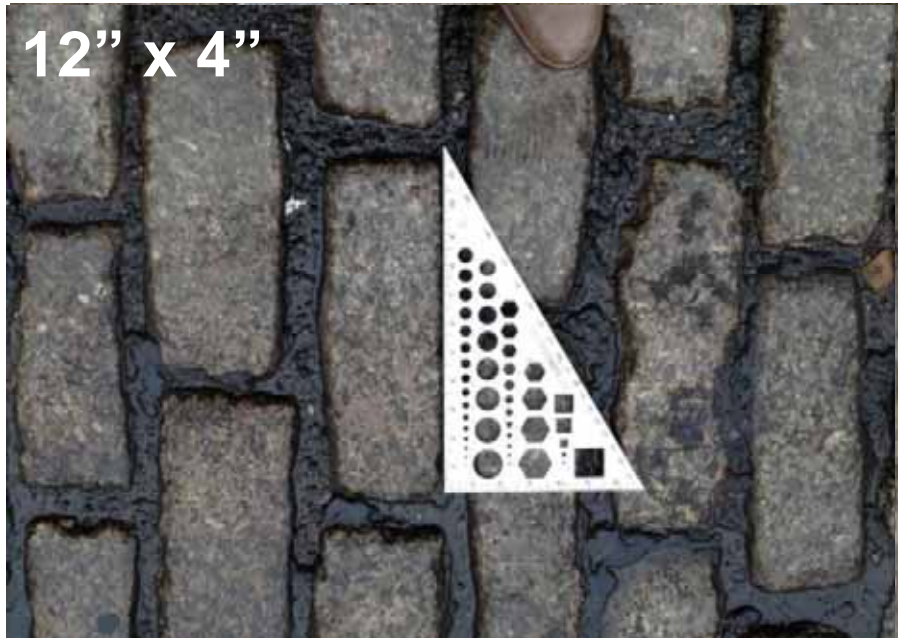
Cobble Stone Streets

Cobble Stones: Sizes



One can find a variety of sizes along the neighborhood. These are a few.

Cobble Stones: Sizes



Existing Cobble Stone: Color Samples Tan & Gray



Cobble Stones: Sizes



Generally there are various shades of gray & tan / pink mixes found in a random placement in a variety of sizes.

Cobble Stone: Patterns



A variety of patterns creating street quilts placed over time

Bikeable Historic Streets in European Cities



Cobble Study: Creating Historic Bikeable Streets

How Surface is Achieved

- + Tight joints
- + Smooth Finish
- + Regularized width and run course
- + Slightly undulating top surface
- + Irregular edges

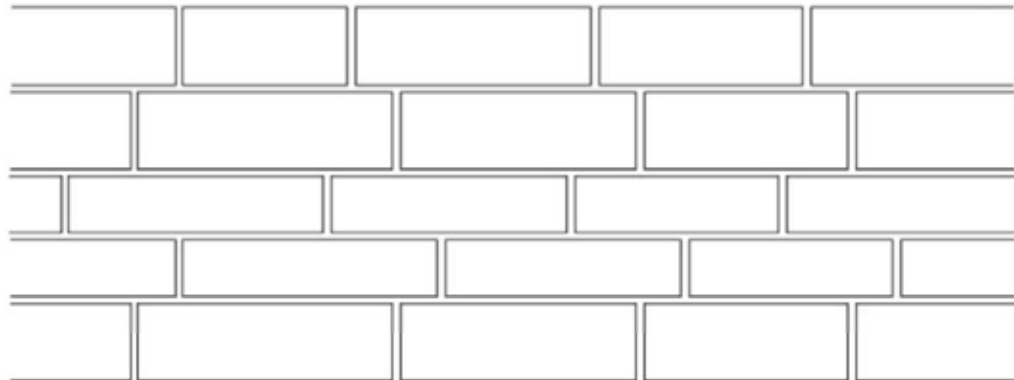
4.5"

5.0"

3.5"

3.5"

5.0"



Main Street
DUMBO



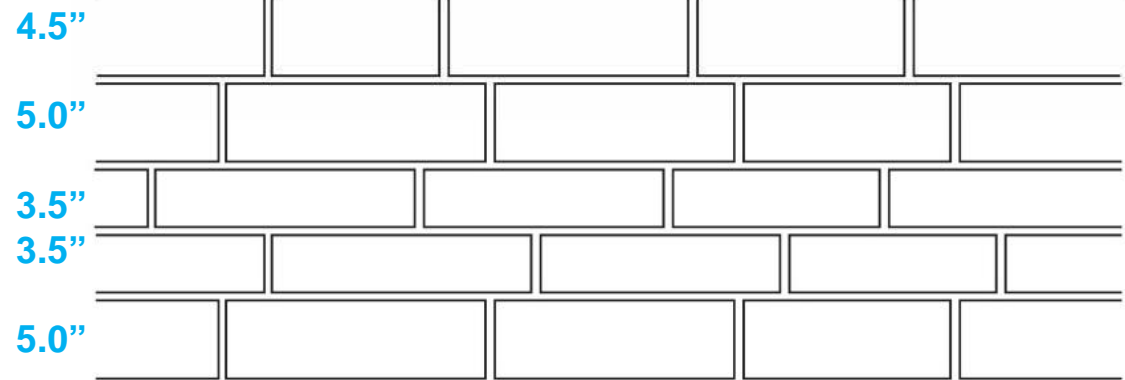
Historic Crosswalk
@ Plymouth & Adams



Reconstructed Crosswalk
@ Adams & Water

Cobble Study: Creating Historic Bikeable Streets

Running Course Analysis



Shade: browns, tans, and grays

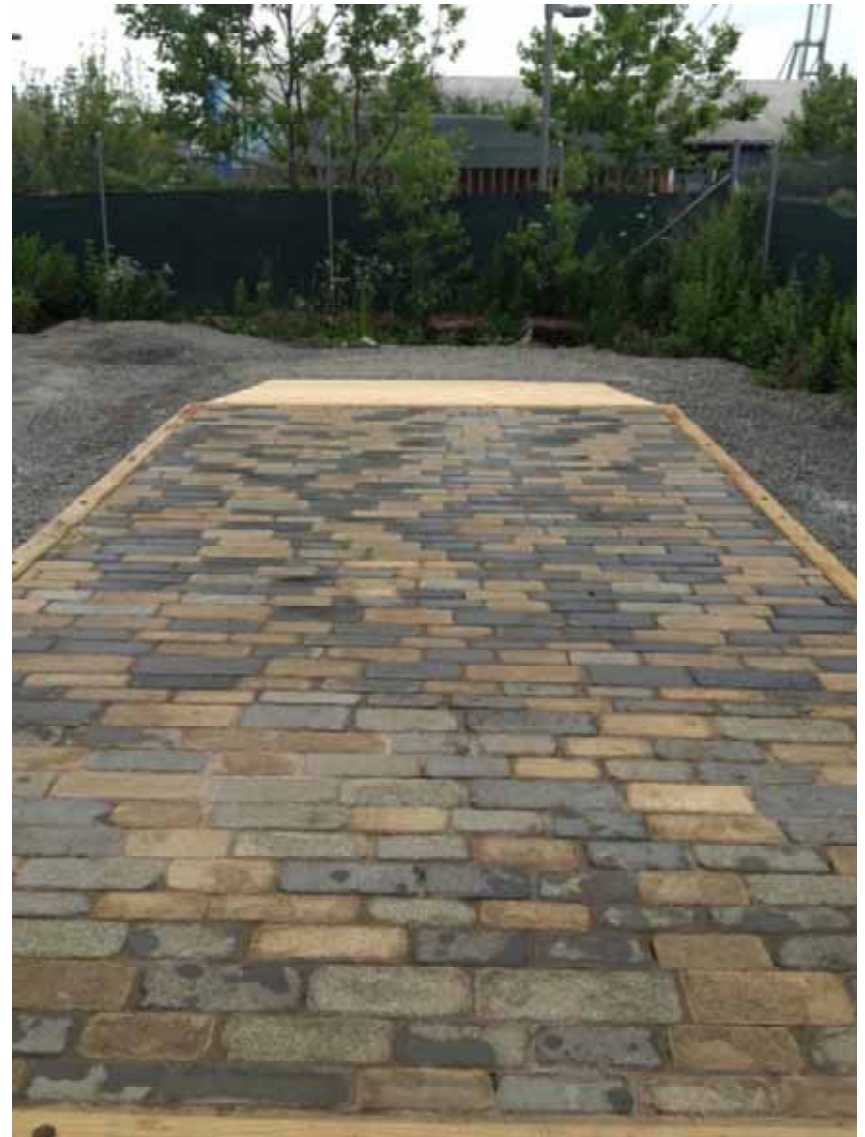


Size: W x L 4"- 5" x 9"- 12"
Average jointing $\frac{1}{4}$ " – $\frac{3}{4}$ "



Texture: smooth finish, minimally rounded, and undulating sides

Cobble Mockup: Completion



Cobble Mockup: Construction



Cobble Mockup: Viewing



Approx. **50 – 60** people
came to view the mock-ups



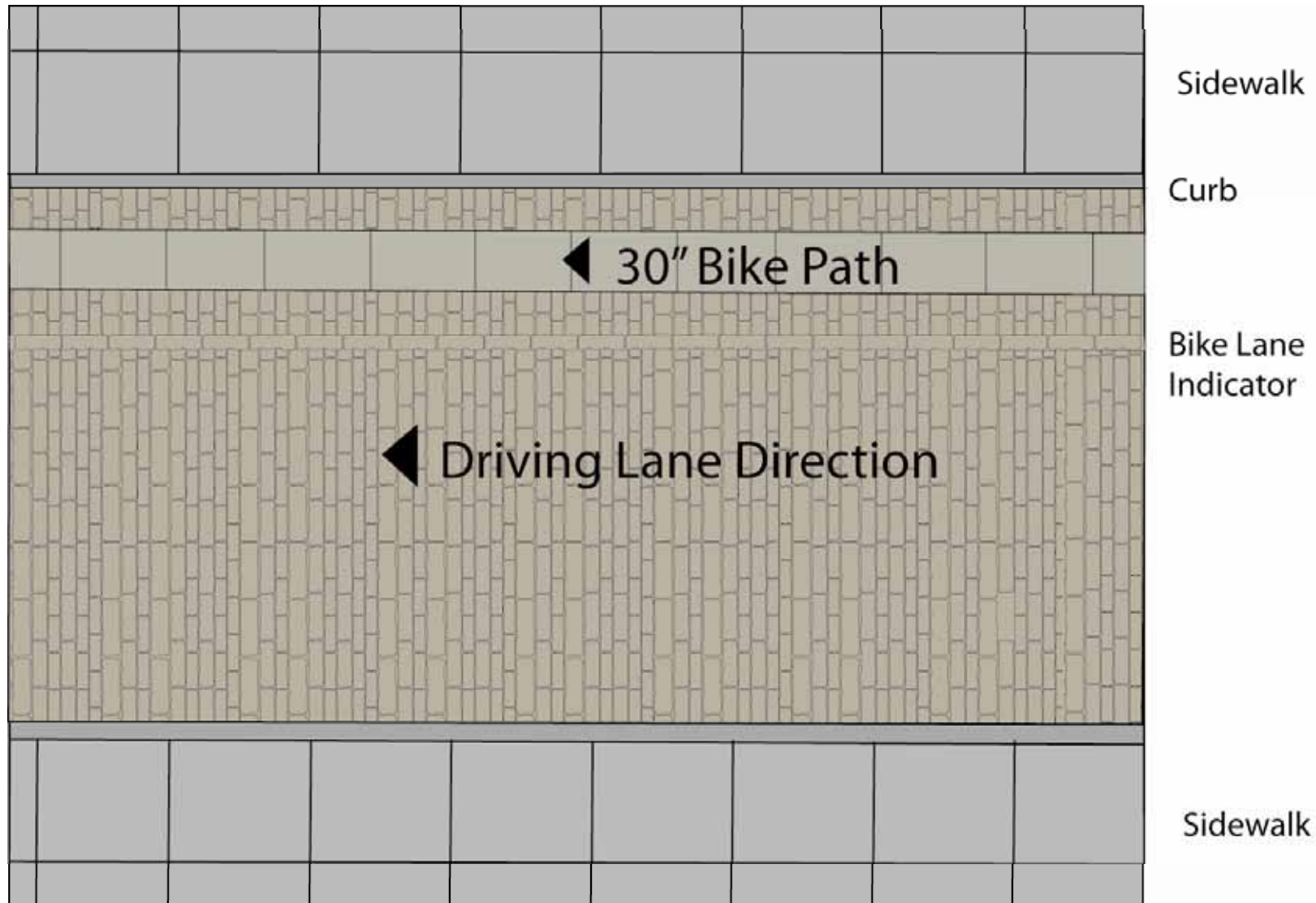
37 formal comments submitted
on written forms and by email



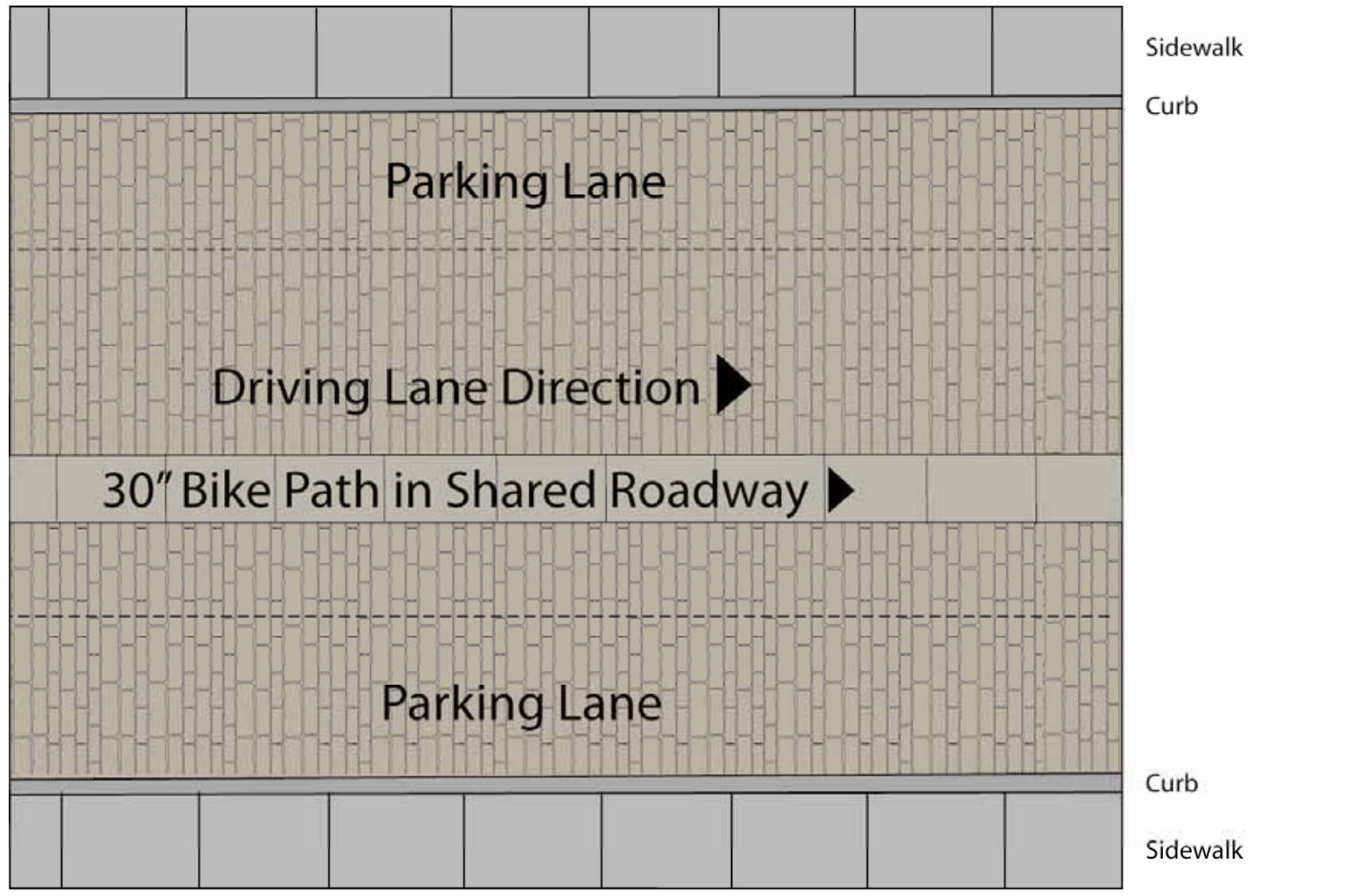
30 preferred the old cobble
3 preferred the new cobble
4 inconclusive comments

Street Design

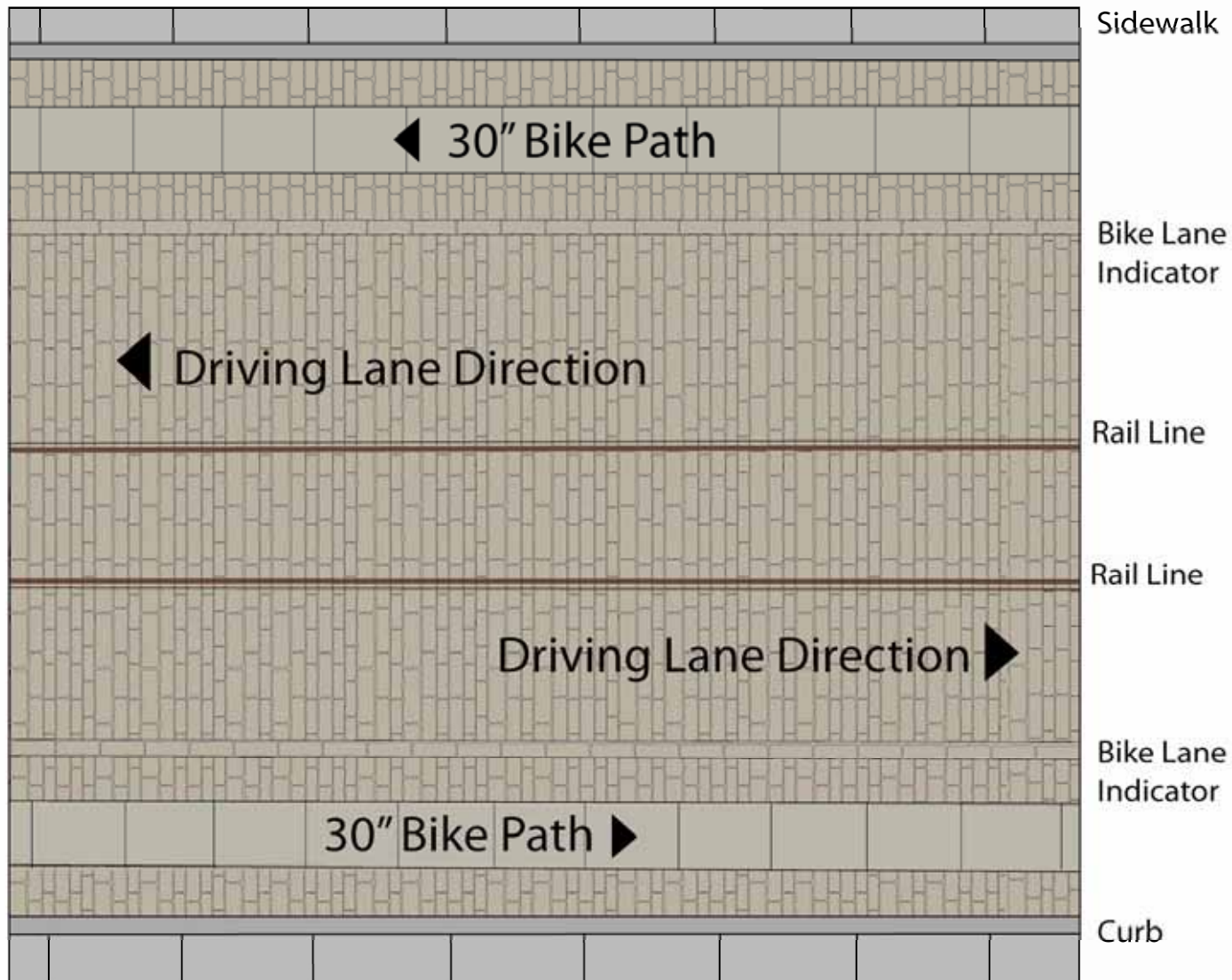
Street Typologies: Bike Lane on Side of Road



Street Typologies: Bike Path on Shared Roadway



Street Typologies: Bike Lanes on Two Way Street



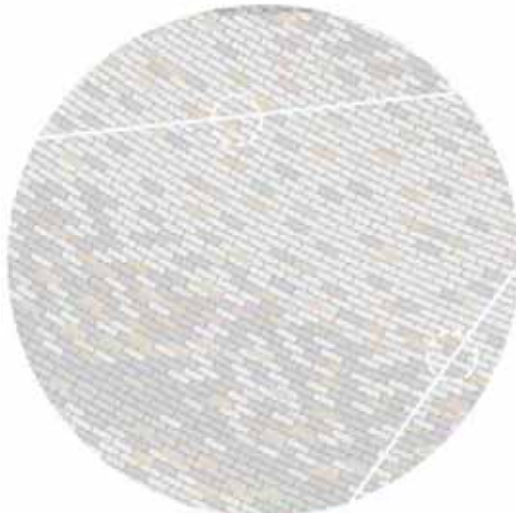
Plaza Concept Design

**Respect, celebrate & enhance the
neighborhood's character**

Concept Plan: Paving



RAIL LINE PAVING DETAIL:
HORIZONTAL COBBLE 12"X 4" LIGHT GREY



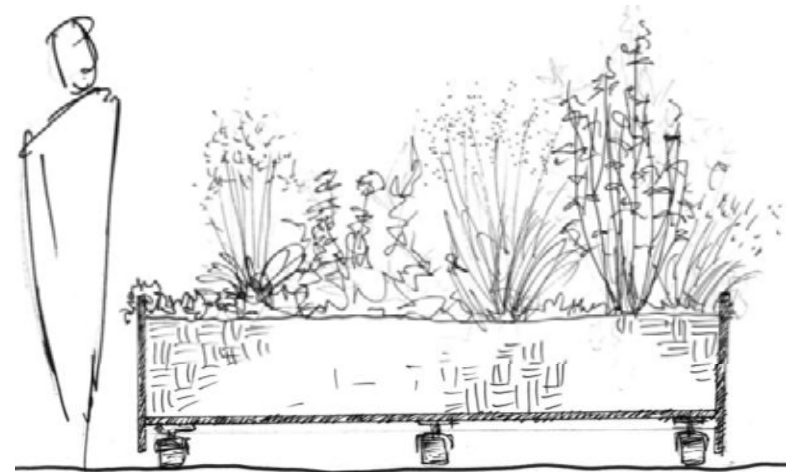
PAVING DETAIL:
MIX OF 12" X 4" LIGHT TAN / GREY - DARK TAN / GREY



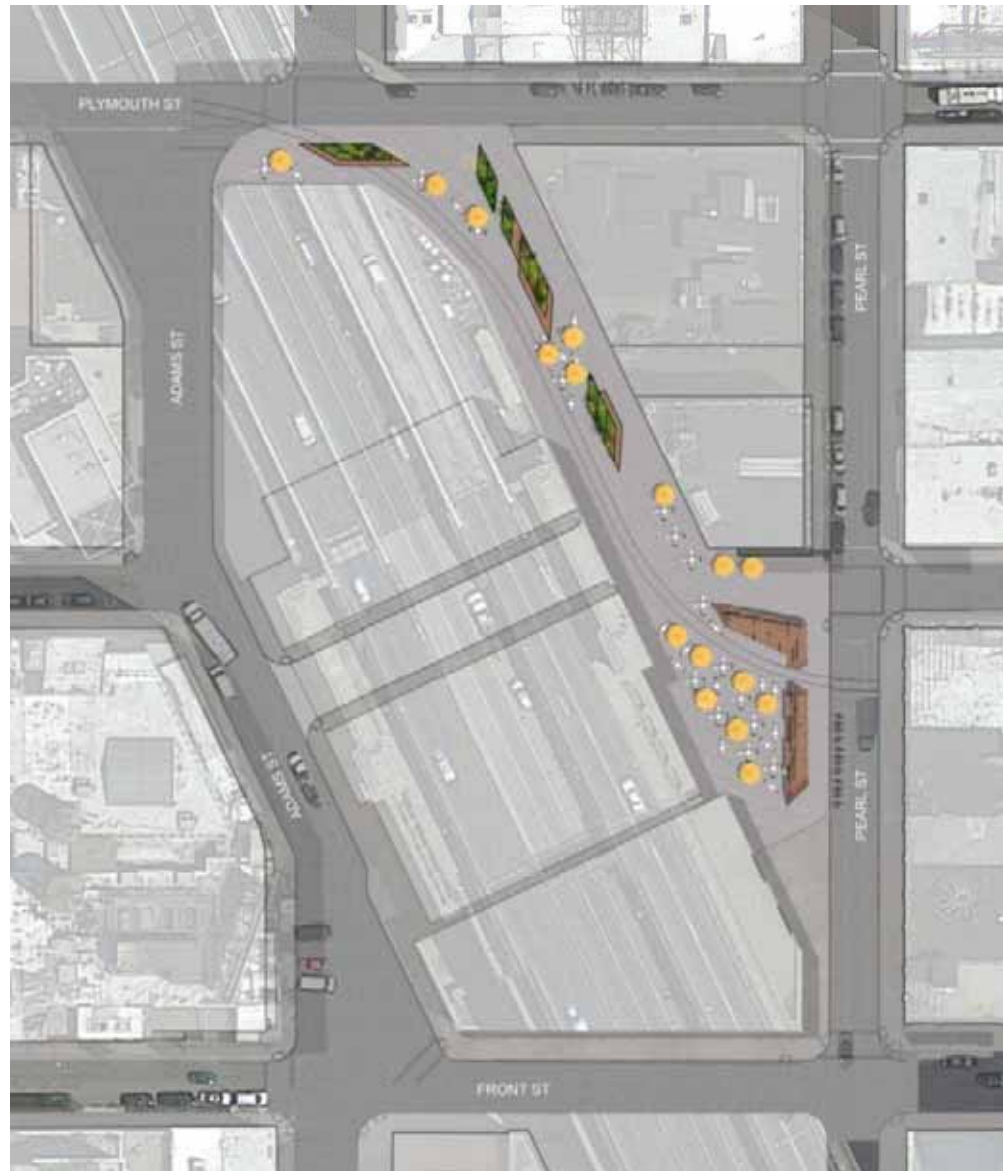
Concept Plan: Benches and Planters



Concept Plan: Planters



Concept Plan: Flexible Seating



Rendering: Anchorage Place from Pearl St.



Rendering: Anchorage Place from Plymouth St.



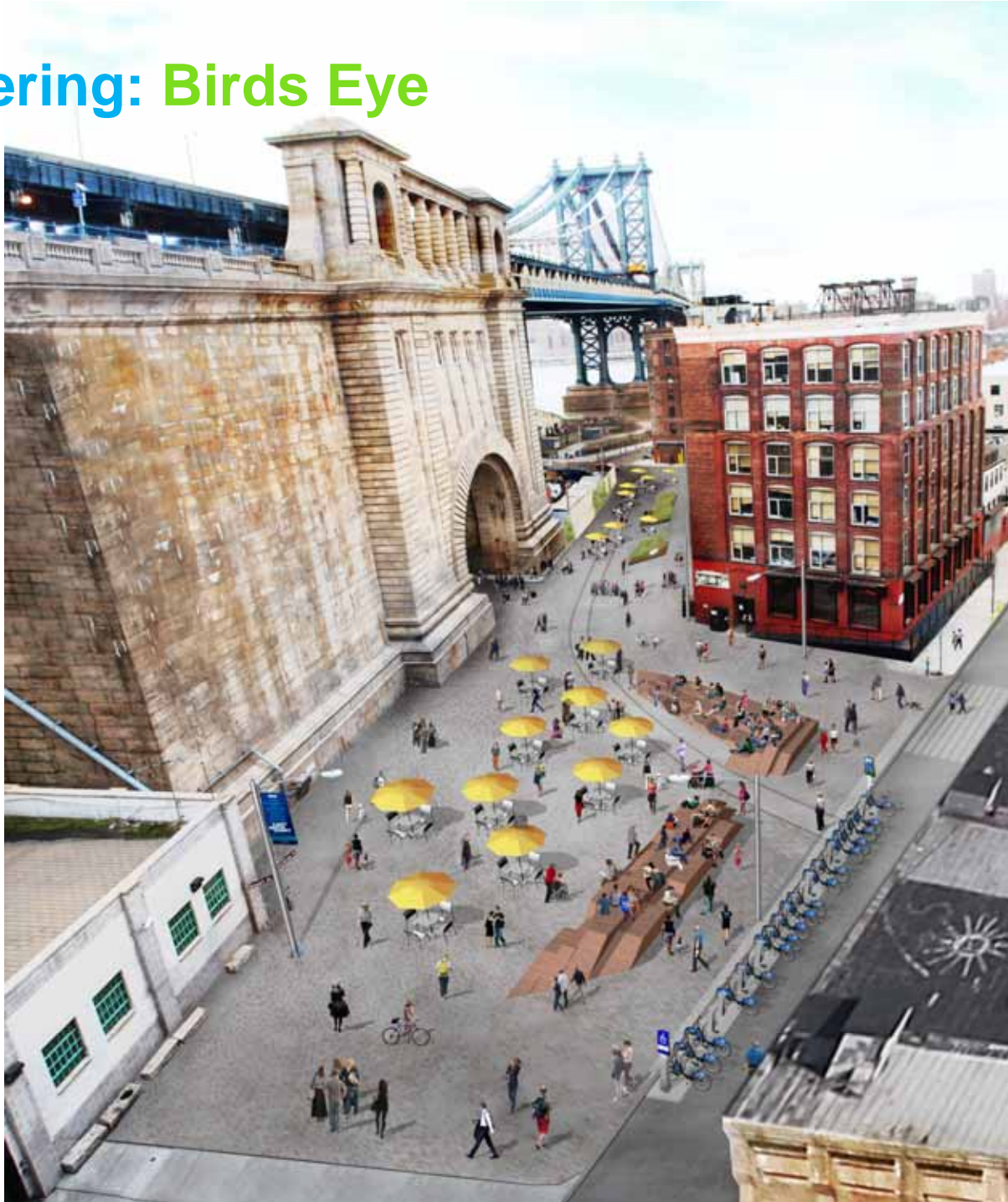
Rendering: View from the Archway



Rendering: Lighting



Rendering: Birds Eye



Thank You
