

NYCDOT SAFE ROUTES TO SCHOOL



COMMUNITY BOARD NO. 7

P.S. 169

6-19-13



PROJECT TIMELINE

2003
Evaluation of
1400+
elementary
and Middle
Schools

2006-2007
Develop
Preliminary
Designs for
32 Schools

2009-Ongoing
Design/Construction
of Remaining
Schools

2010-2013
Develop
Preliminary
Design for 31
Schools

2003-2006
Priority
School
Safety Study
Reports
(135)

2007 – 2012
Designed
and
Constructed
35
Priority
Schools

2009-2012
Select
Second
Group of
Priority
Schools and
Develop
Reports
(75)

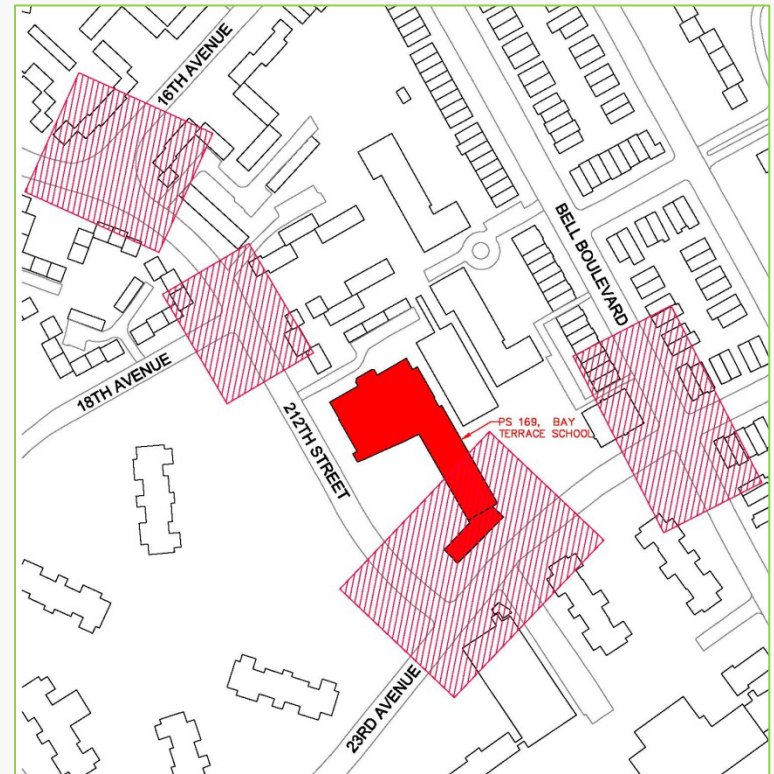
Spring 2013
Begin Final
Design of
Priority
Schools
(Second
Group)

Construction of School Safety Recommendations

Queens

P.S. 169, Bay Terrace School

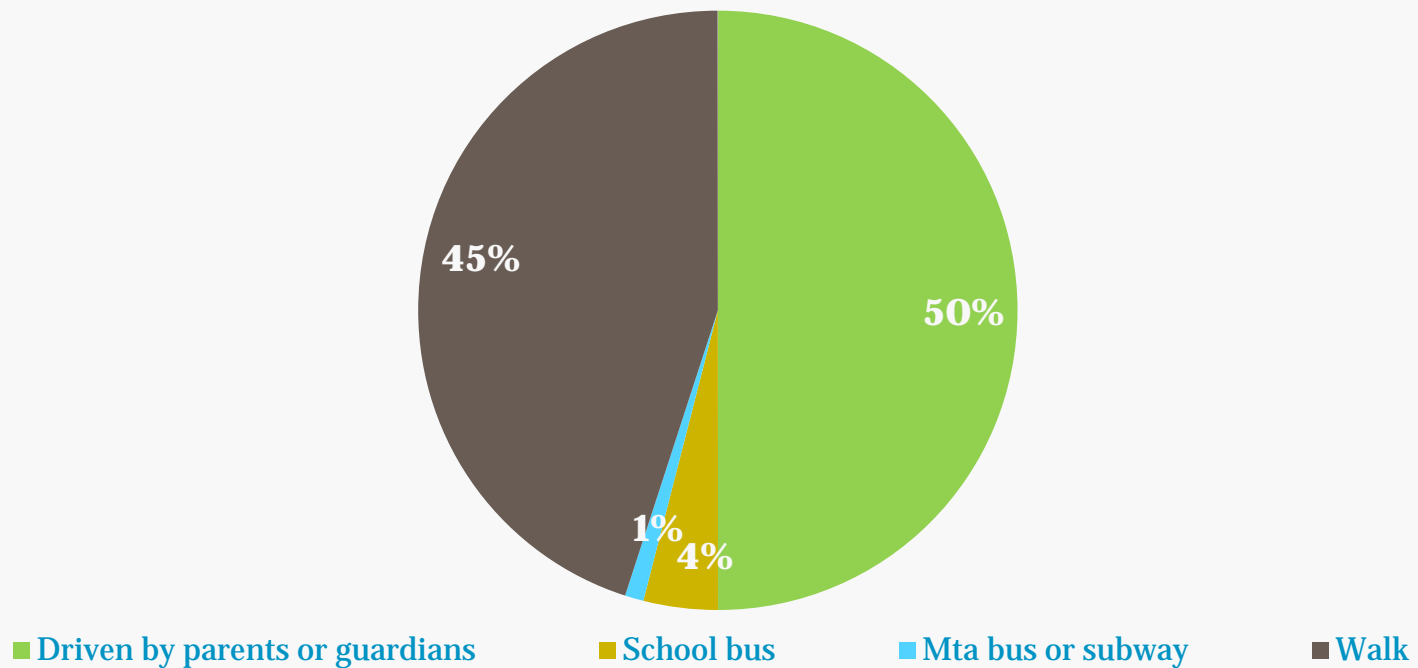
- **Razi School**
Woodside
- **P.S. 16**
Corona
- **Allen Christian School**
St. Albans
- **P.S. 169, Bay Terrace School**
Bayside



Traffic Operation and Modes of Travel

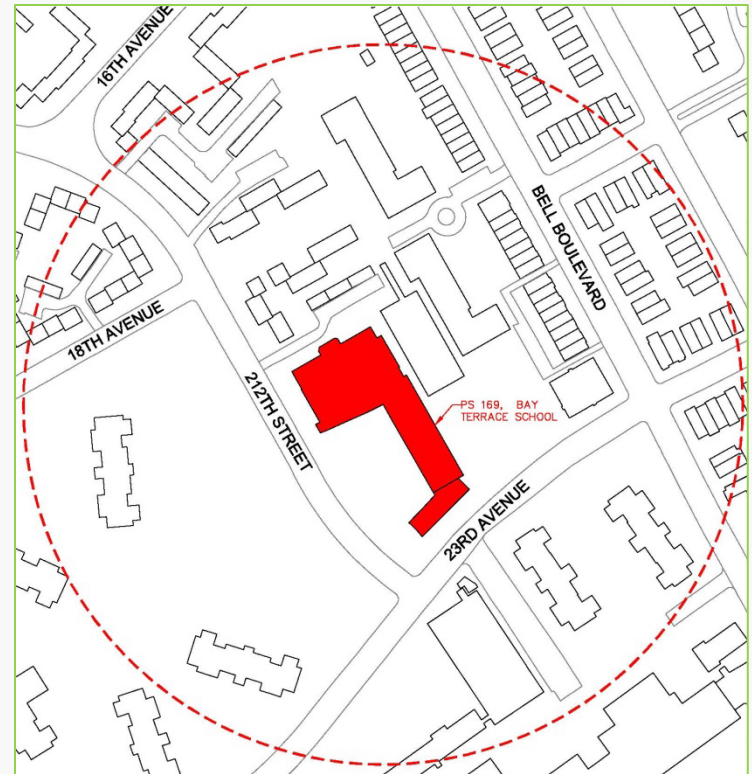
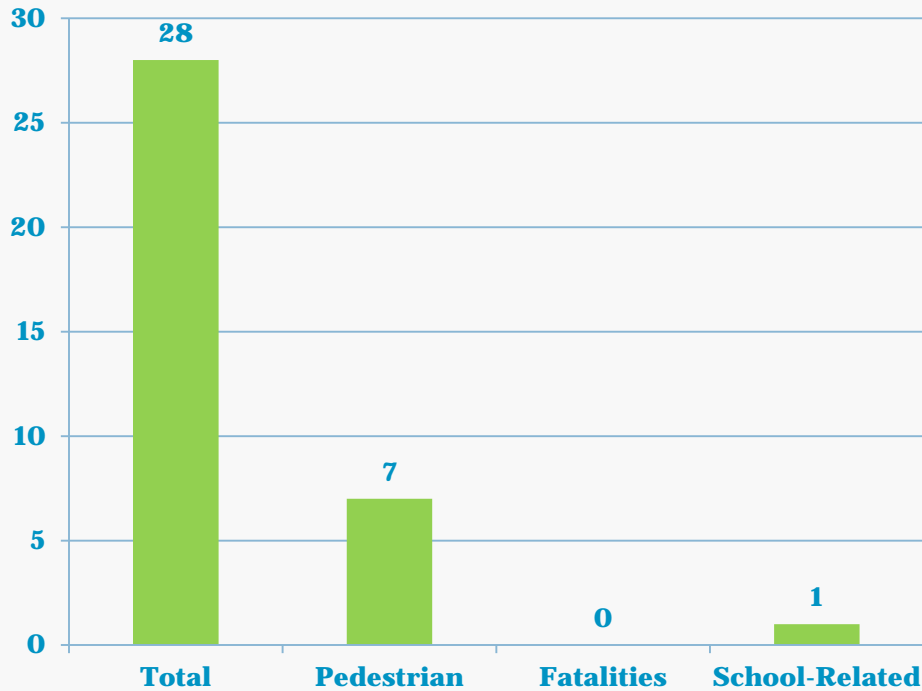


P.S. 169, Bay Terrace School



Accident Summary

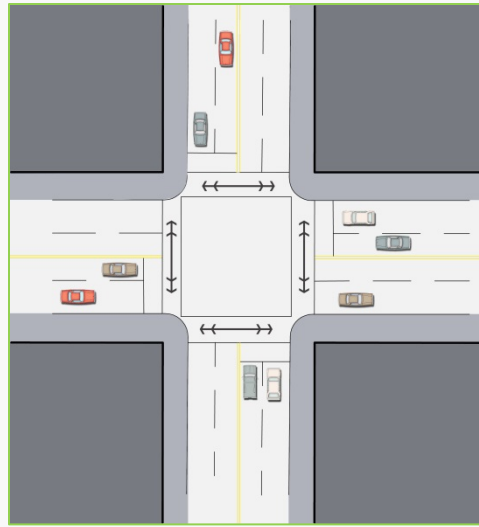
P.S. 169, Bay Terrace School



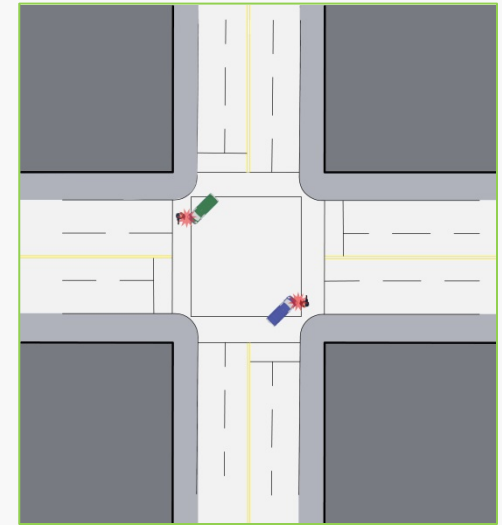
700 Foot Radius



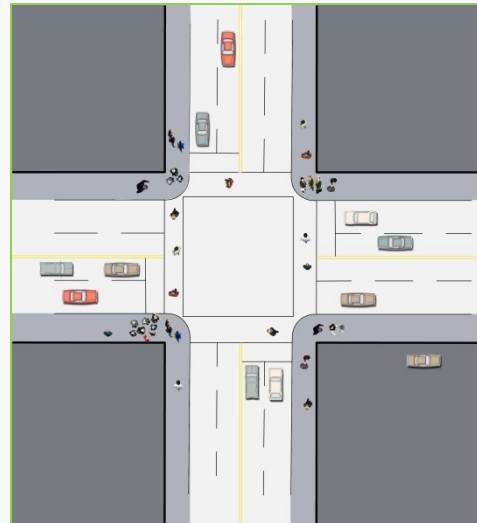
Typical Pedestrian Safety Concerns Identified at School



Wide Crossings



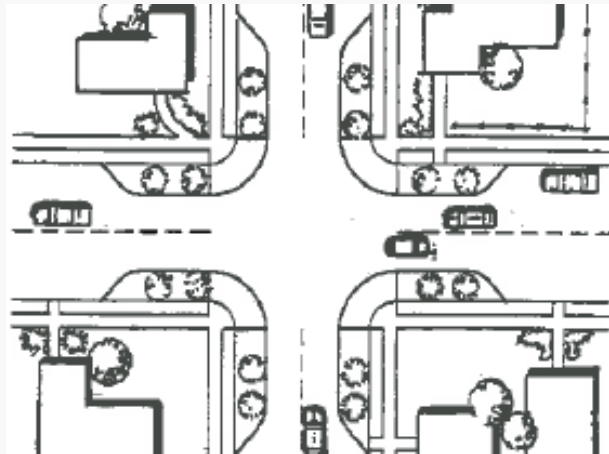
Pedestrian Accidents



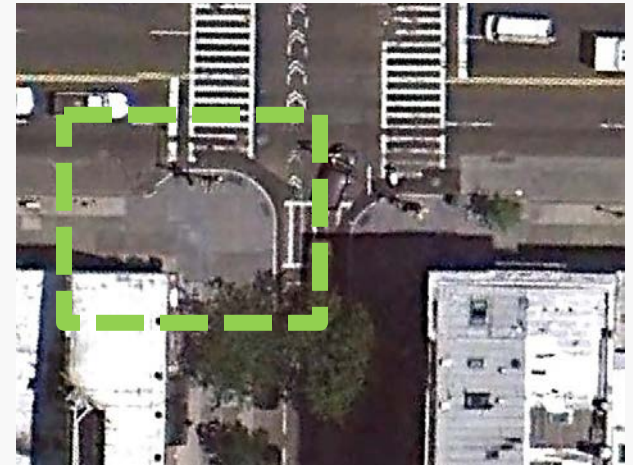
Critical Intersections



Types of Safety Improvements: Neckdowns



Sketch of Full Neckdowns

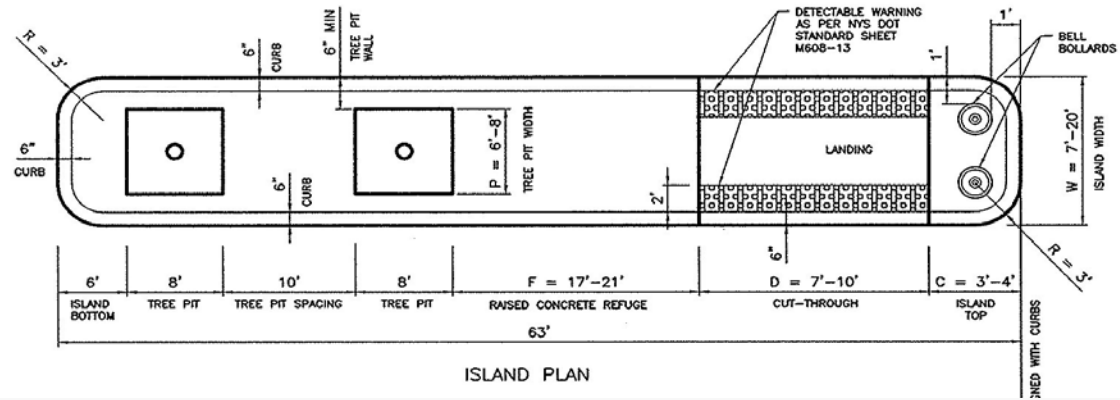


Benefits:

- Shortens crossing distance
- Slows turning vehicles
- Provides additional pedestrian space to reduce crowding
- Calms traffic by physically and visually narrowing the roadway



Types of Safety Improvements: Refuge Medians and Pedestrian Cut-Throughs



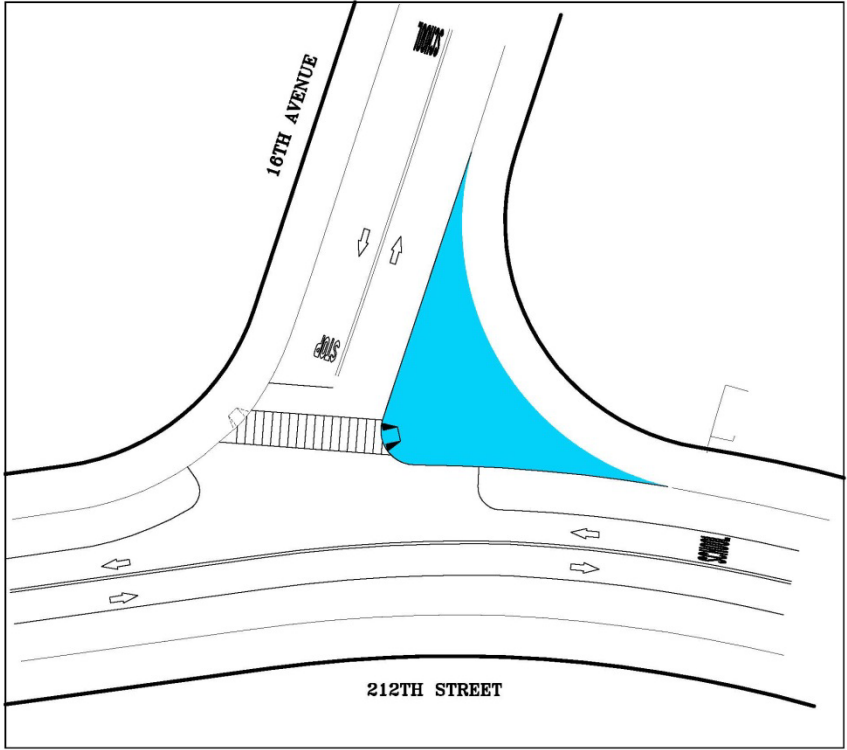
Sketch of Refuge Median






Benefits:

- Shortens crossing distance
- Provides refuge for pedestrians to the roadway in stages
- Reduces risk of vehicle head-on collisions

PROPOSED IMPROVEMENTS INCLUDED IN THE Schematic Geometric Design Plans

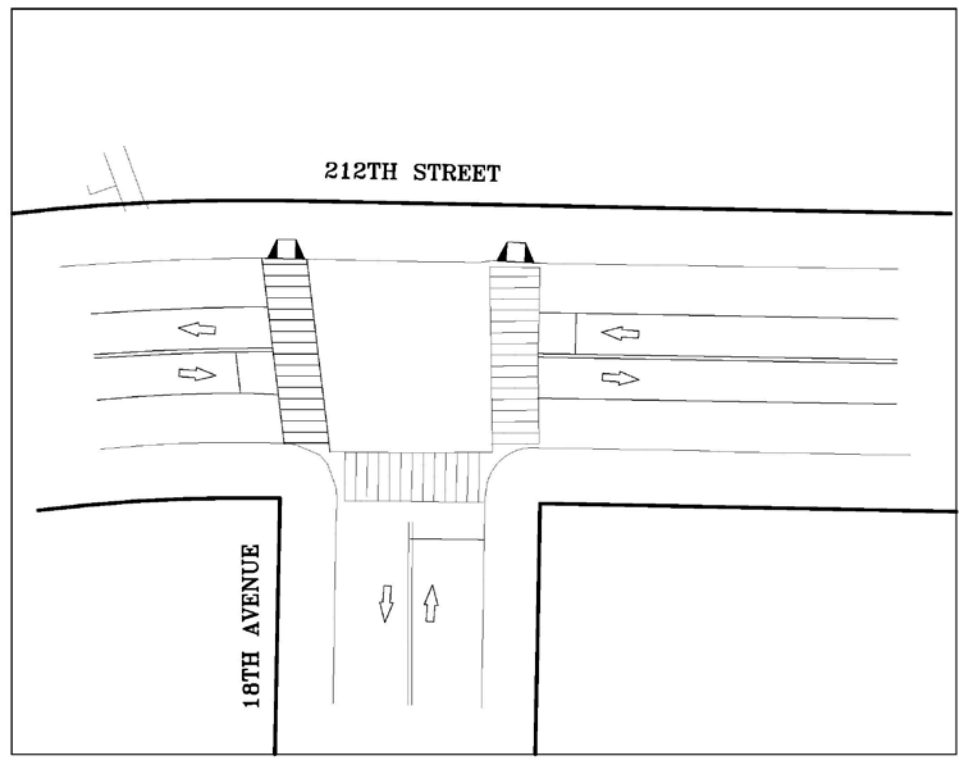


LEGEND:

-  PROPOSED CURB EXTENSION
-  PROPOSED CONCRETE BUS PAD
-  PROPOSED TREE PIT

16th Avenue and 212th Street

PROPOSED IMPROVEMENTS INCLUDED IN THE Schematic Geometric Design Plans

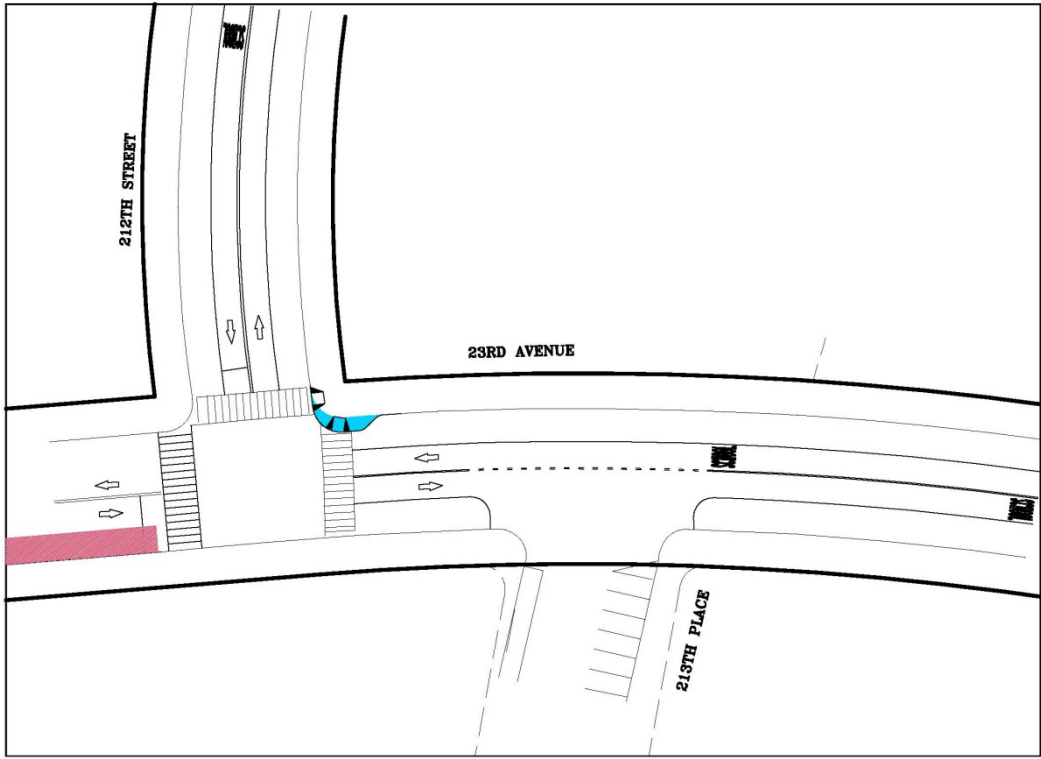


LEGEND:




- PROPOSED CURB EXTENSION
- PROPOSED CONCRETE BUS PAD
- PROPOSED TREE PIT

18th Avenue and 212th Street

PROPOSED IMPROVEMENTS INCLUDED IN THE Schematic Geometric Design Plans

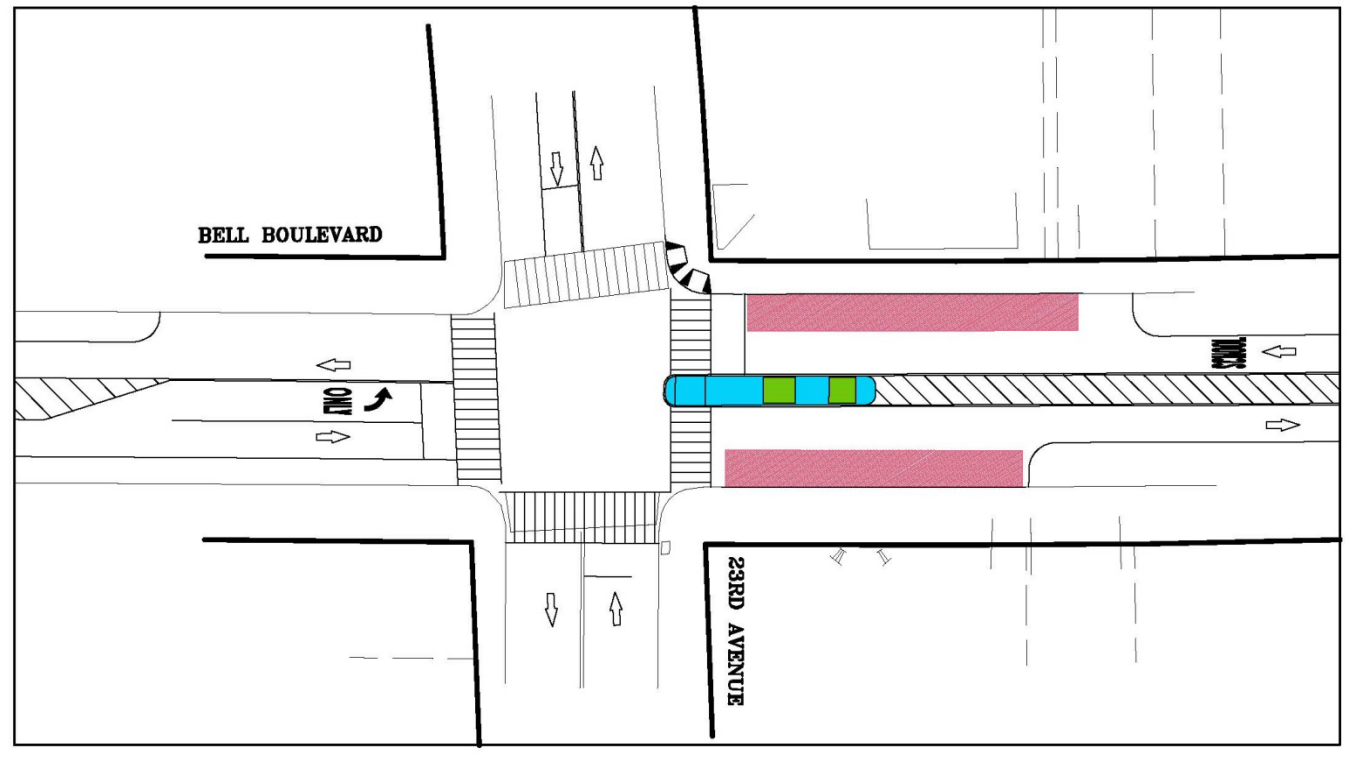


LEGEND:

-  PROPOSED CURB EXTENSION
-  PROPOSED CONCRETE BUS PAD
-  PROPOSED TREE PIT

23rd Avenue and 212th Street

PROPOSED IMPROVEMENTS INCLUDED IN THE Schematic Geometric Design Plans



LEGEND:

- PROPOSED CURB EXTENSION
- PROPOSED CONCRETE BUS PAD
- PROPOSED TREE PIT

Bell Boulevard and 23rd Avenue

SCHEDULE

