

BQE and 37th Ave

Pedestrian Safety Improvement Project

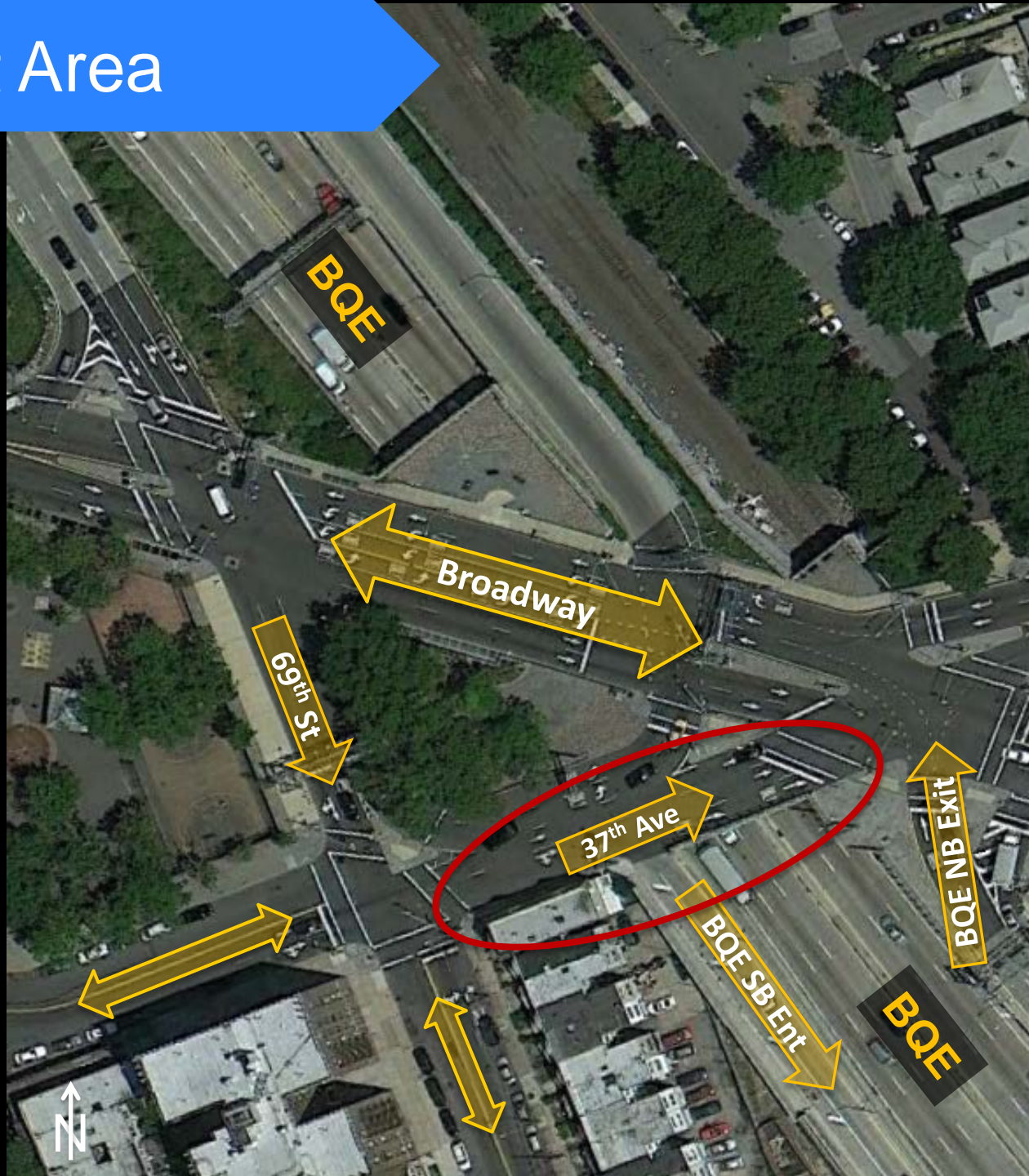
2013



Commissioner Janette Sadik-Khan, New York City Department of Transportation
Presented by the Pedestrian Projects Group, June 20, 2013 to Queens Community Board 3



Project Area



Pedestrian Generators

Near subways (E, M, F, R & 7) and bus terminal

High density residential neighborhood

Connector to retail and restaurant areas

Subway (M/R)

Playground

← Woodside

Jackson Heights →

Subway and bus hub

Subway (7)

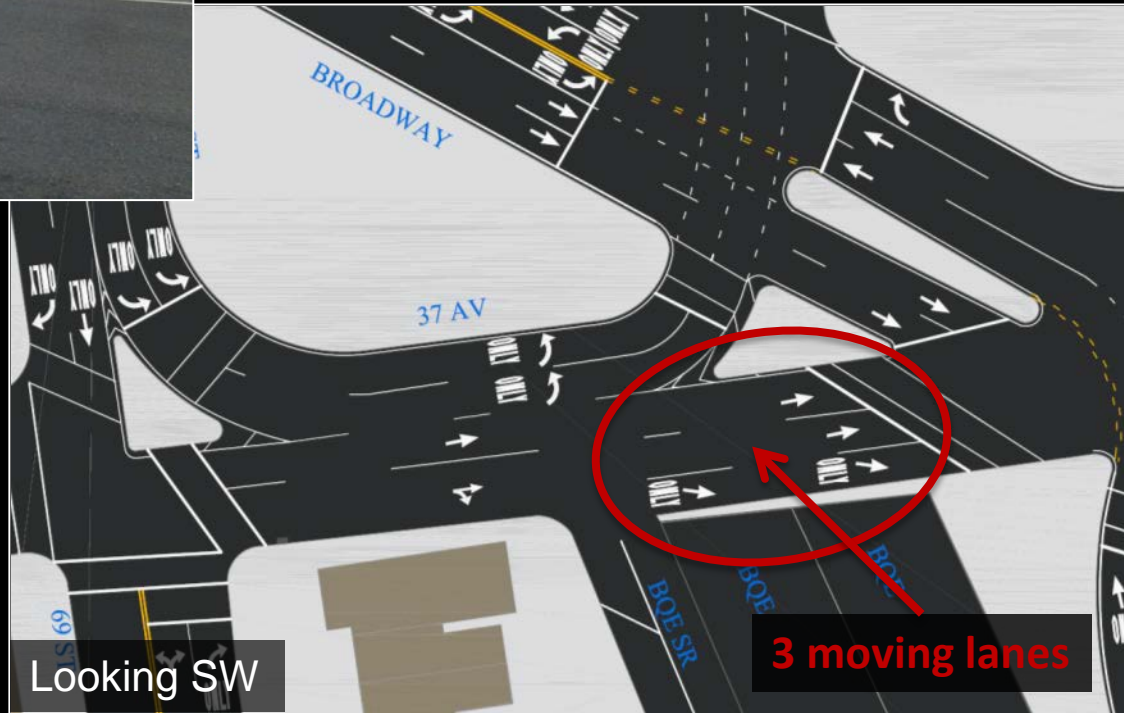
Existing Conditions



Looking SE

No sidewalk on south side of 37th Ave

Low vehicle volumes with excess road capacity (peak hour = 255 cars)

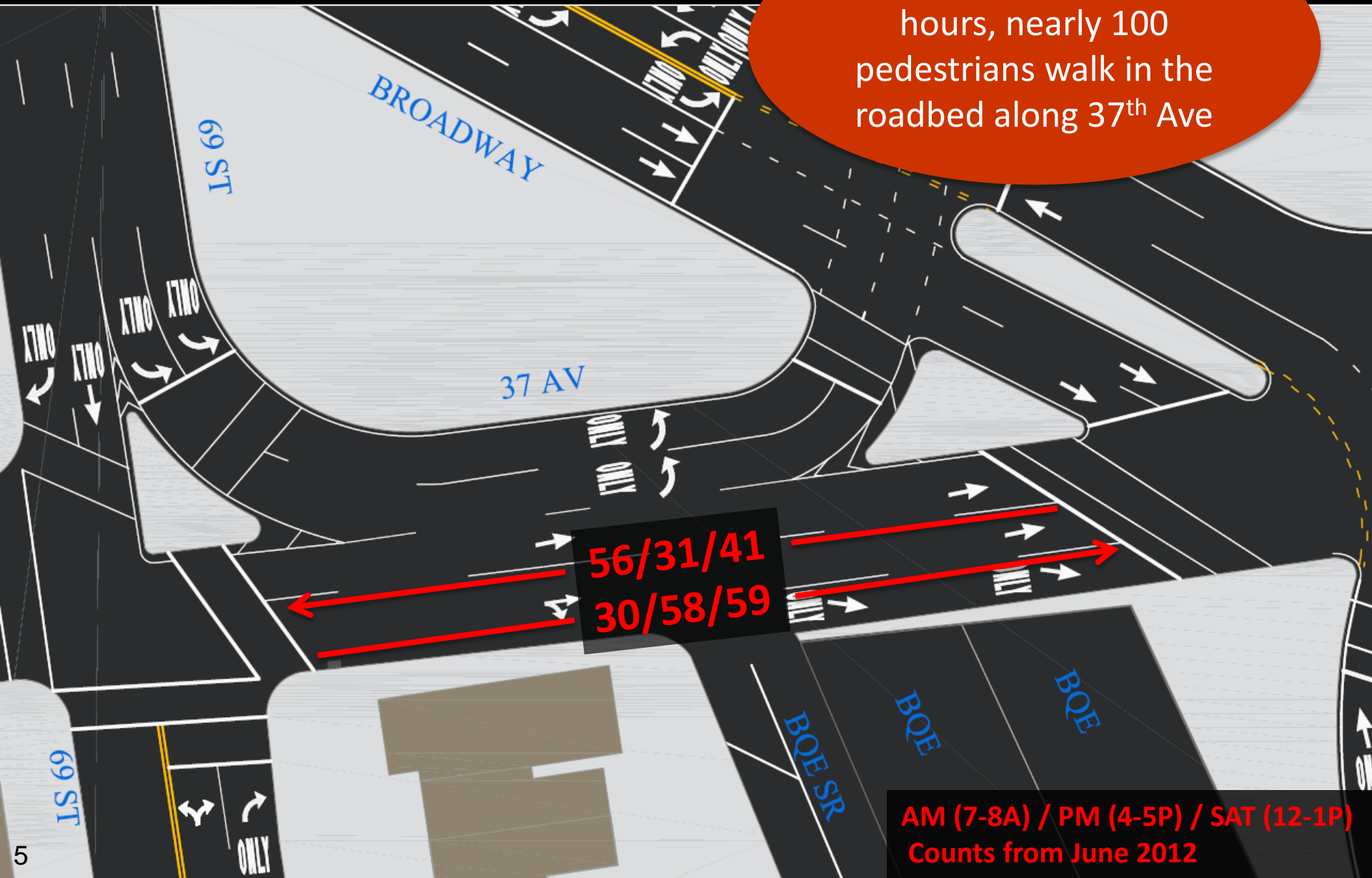


Looking SW

3 moving lanes

Existing Conditions

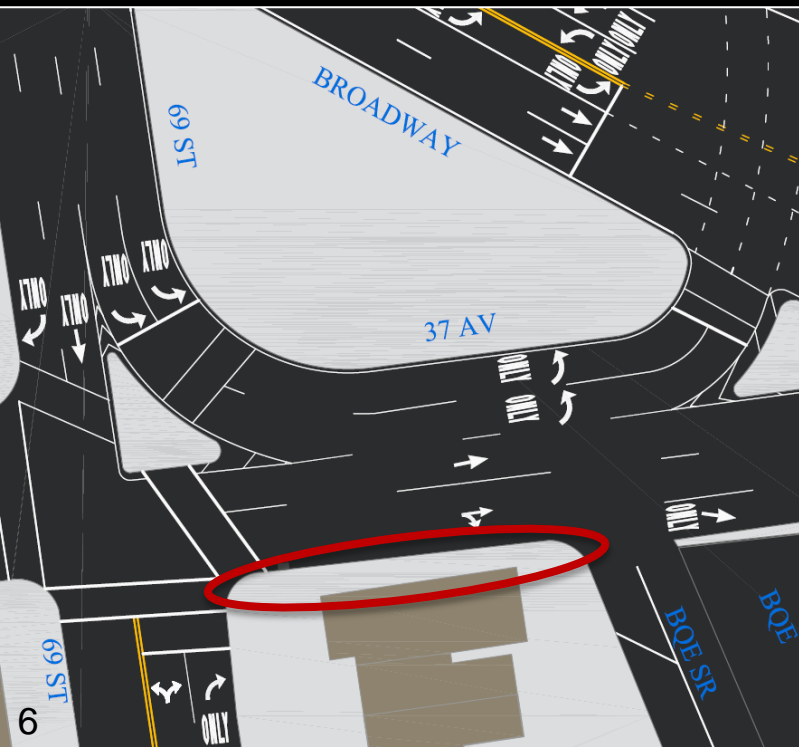
During peak travel hours, nearly 100 pedestrians walk in the roadbed along 37th Ave



AM (7-8A) / PM (4-5P) / SAT (12-1P)
Counts from June 2012

Existing Conditions

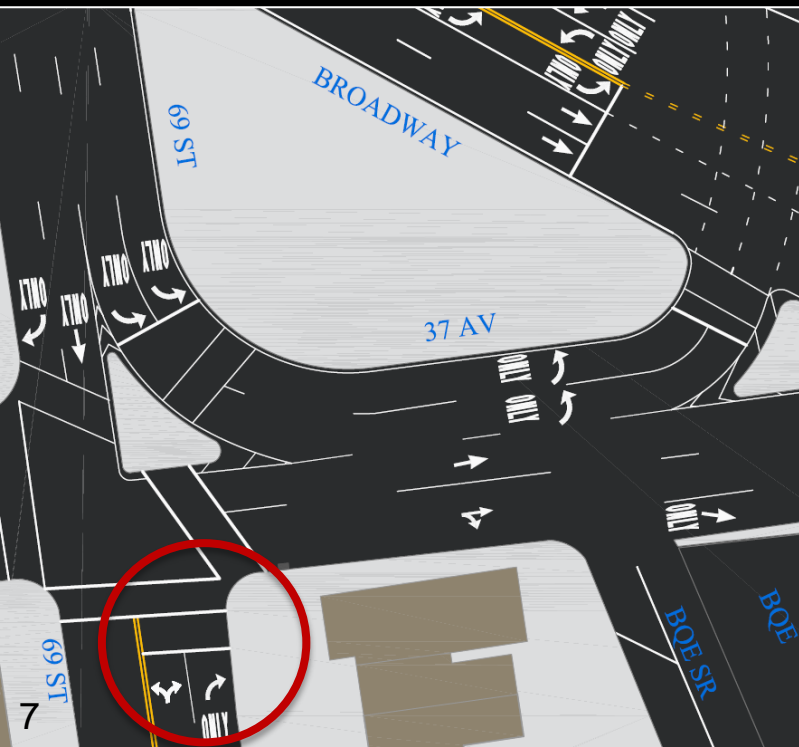
Grade change in concrete and pedestrian fencing make existing sidewalk inaccessible



View west

Existing Conditions

Right-turn-only lane NB from 69th St to 37th Ave is ineffective and underused



View north

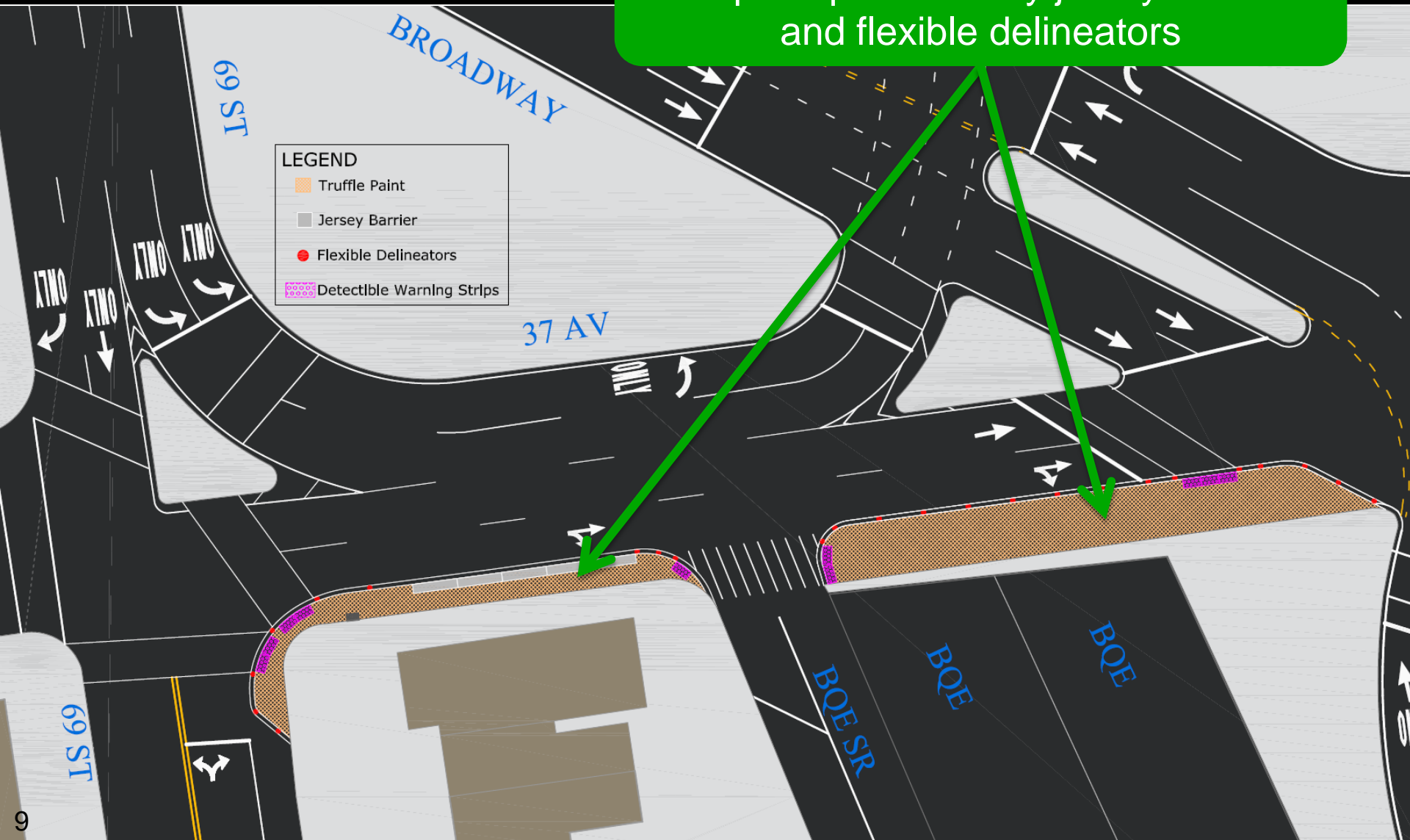
Rapid Response Toolkit

- Pavement markings
- Painted and/or textured surfaces
- Concrete work
- Flexible delineators
- Jersey Barriers
- Urban Art Program



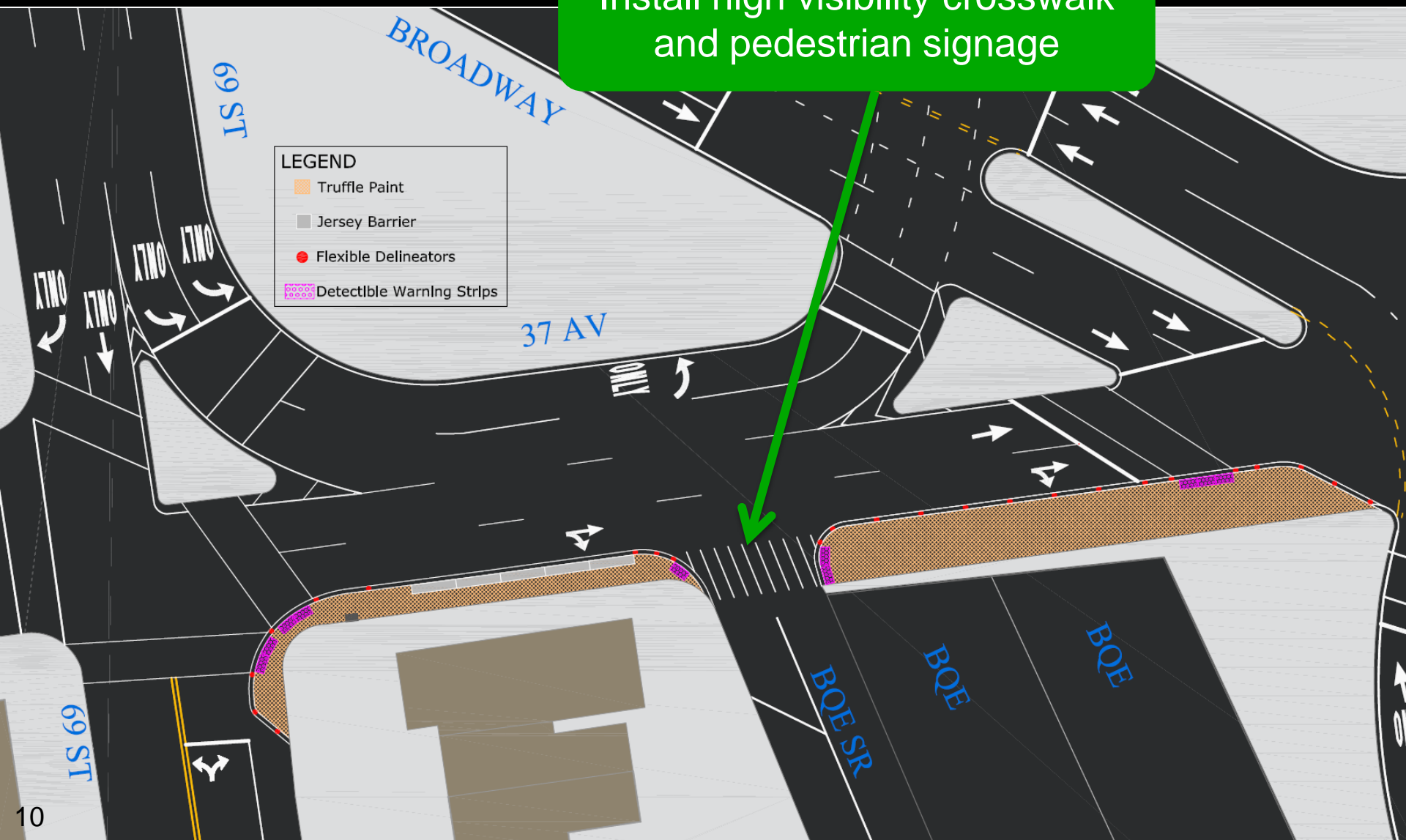
Proposal

Create sidewalk space with markings and paint protected by jersey barriers and flexible delineators



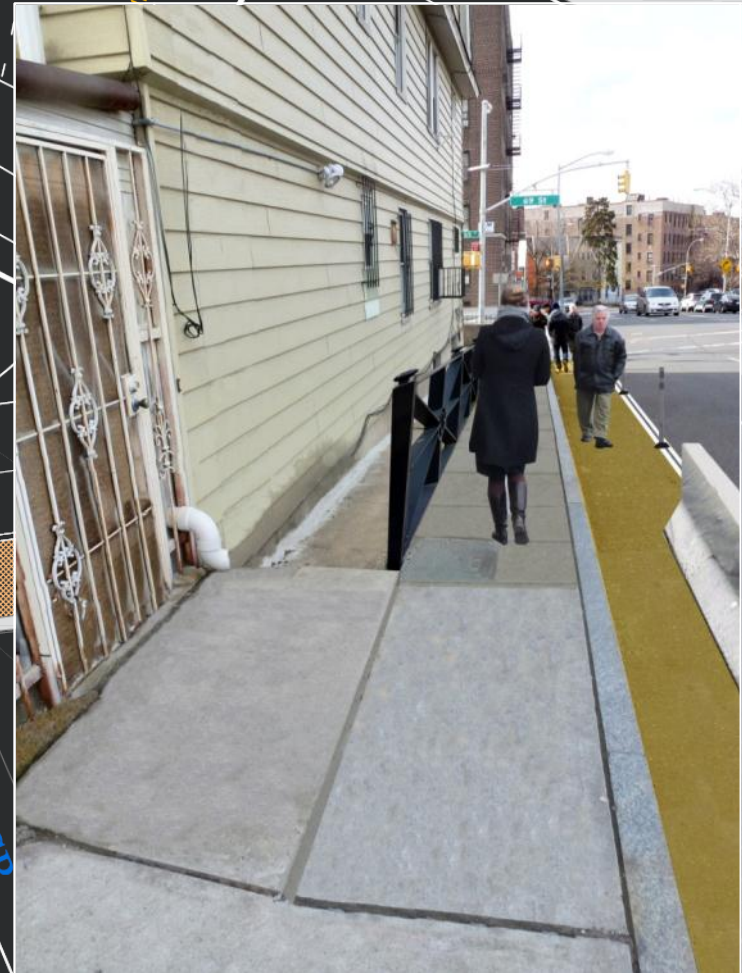
Proposal

Install high visibility crosswalk and pedestrian signage



Proposal

Remove pedestrian fence and do concrete work to make sidewalk accessible



Proposal

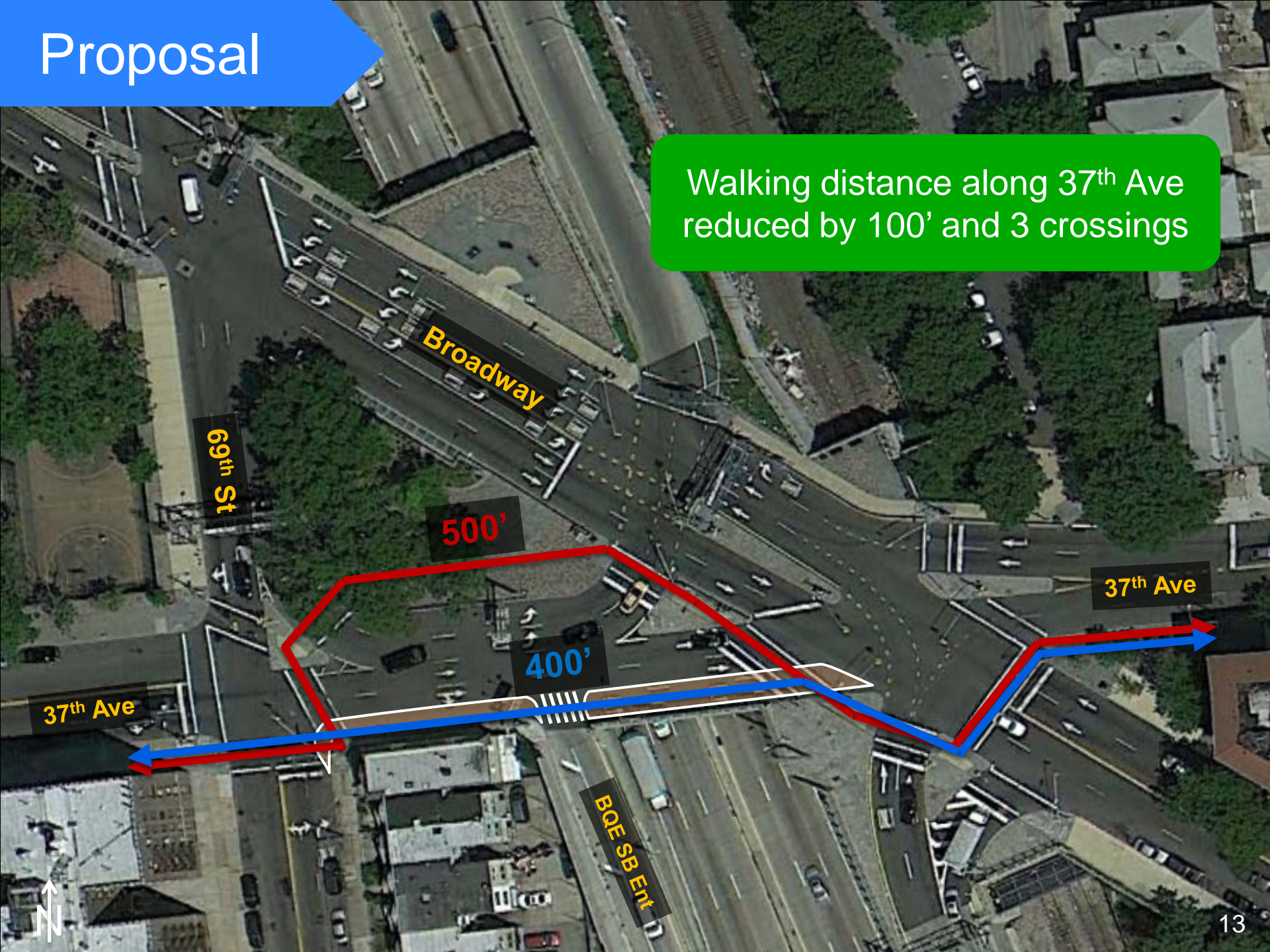
Remove right-turn-only lane, extend parking, and shorten crossings

- LEGEND
- Truffle Paint
 - Jersey Barrier
 - Flexible Delineators
 - Detectible Warning Strips

Turning vehicles (355 during peak hour) have a protected signal phase to make turns

Proposal

Walking distance along 37th Ave reduced by 100' and 3 crossings



Broadway

69th St

500'

400'

37th Ave

37th Ave

BOE SB Ent



Proposal




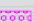


Looking Southwest

Summary

1. Install “painted” sidewalk extension protected by flexible delineators and jersey barriers
2. Install crosswalk and pedestrian signage at BQE SB entrance
3. Remove pedestrian fence and do concrete work to make existing sidewalk accessible
4. Remove right-turn only lane on NB 69th St and shorten crosswalks



LEGEND	
	Truffle Paint
	Jersey Barrier
	Flexible Delineators
	Detectible Warning Strips

nyc.gov/dot

**Thank
You**