

# East 138<sup>th</sup> Street Safety Improvements



Commissioner Janette Sadik-Khan New York City Department of Transportation  
Presented June 10th, 2013 to Bronx Community Board 1 Municipal Services Committee



# Project Background

- Senior Safety Area
- E 138<sup>th</sup> St is a high crash corridor (top 10% of Bronx streets)
- Excessively wide lanes contribute to speeding and reckless driving
- No continuous eastbound and westbound bicycle route in CB1
- New Randall's Island Connector bridge (opening late 2014)

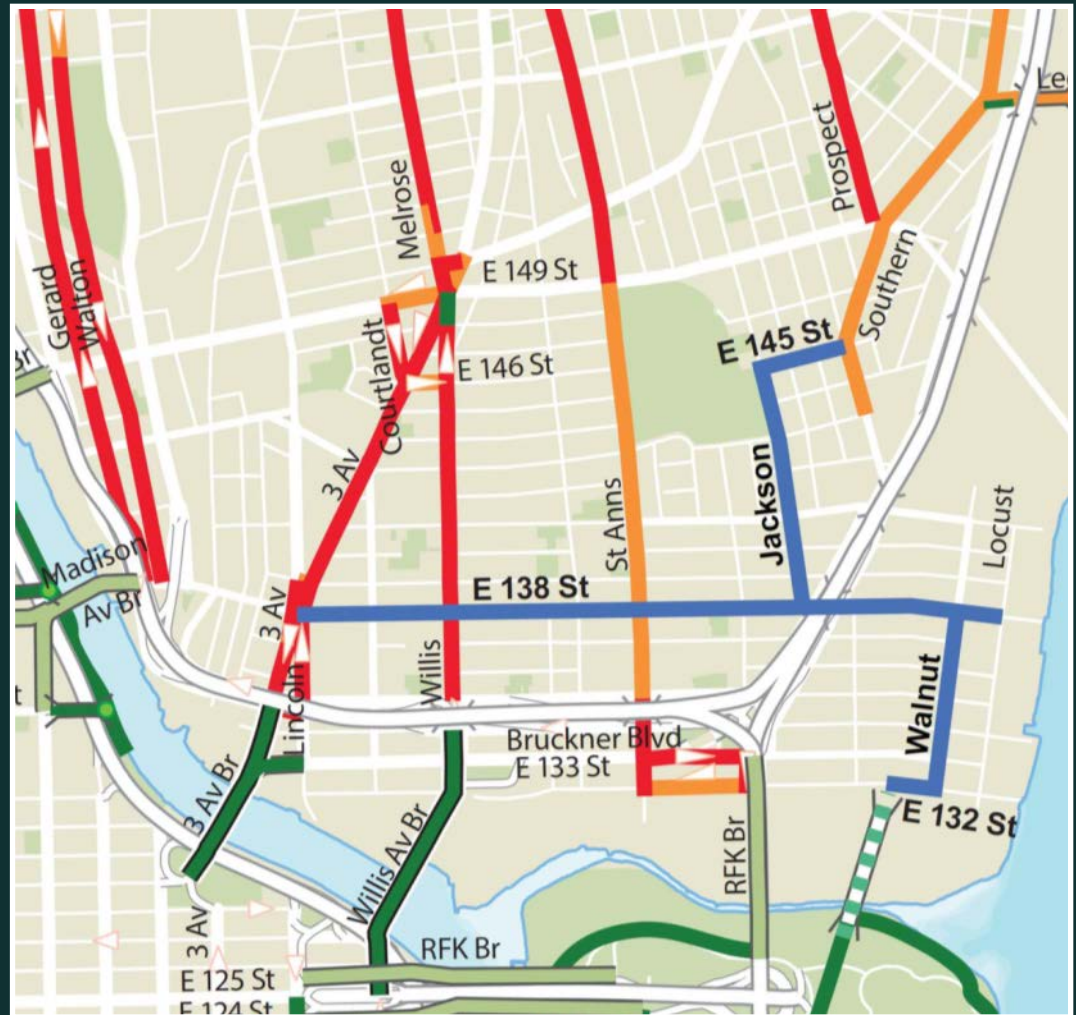


Existing Bicycle Network



# Project Scope

- E 138<sup>th</sup> St
  - Traffic calming improvements
  - Bicycle lanes
  - Painted curb extensions
- Jackson Ave & E 145<sup>th</sup> St
  - Bicycle route connector to Prospect Ave/Southern Ave
- Walnut Ave & E 132<sup>nd</sup> St
  - Port Morris to Randall's Island bicycle route connector





# Existing Conditions – E 138<sup>th</sup> St

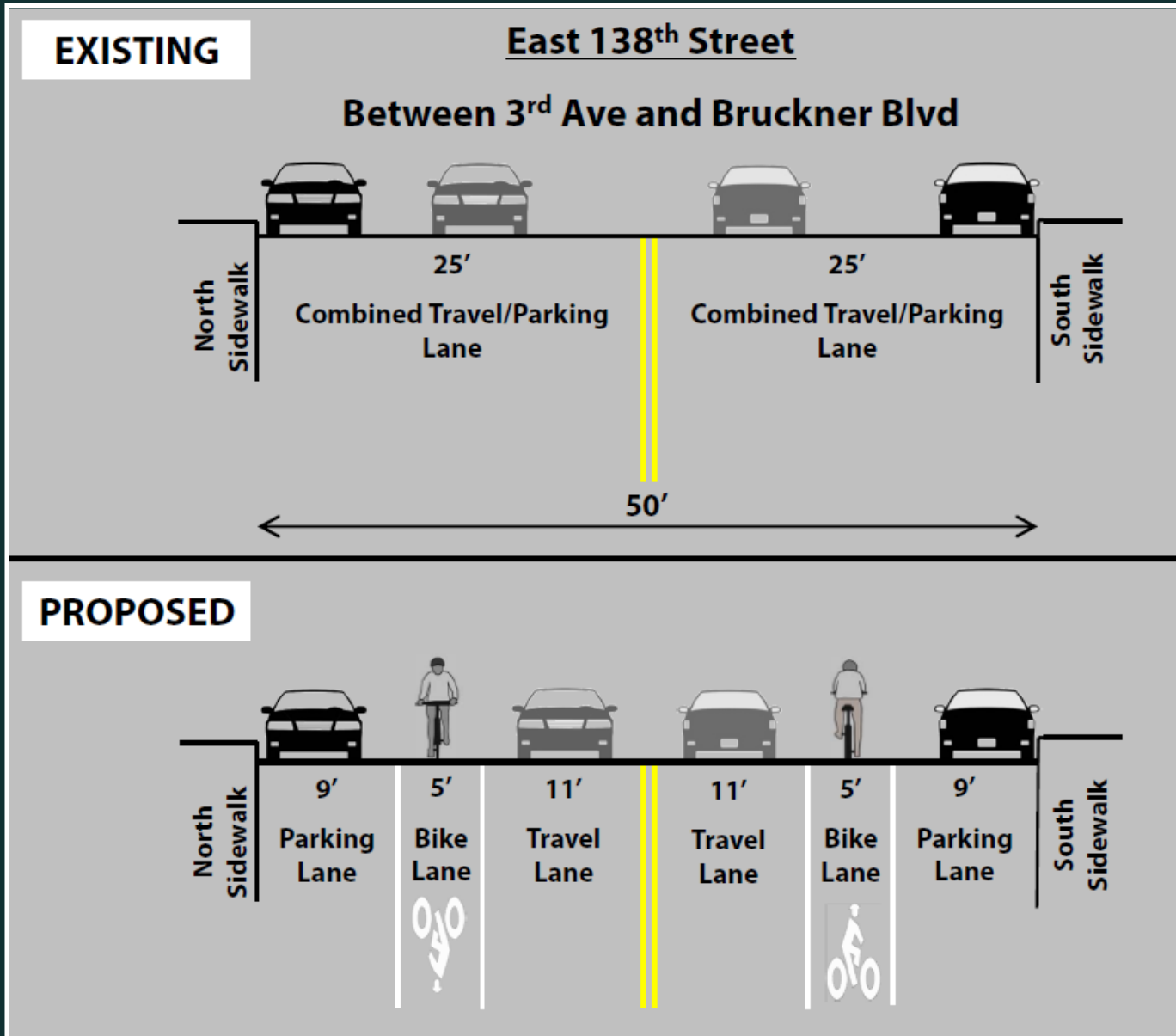


Long crossing distances

50 feet wide two-way roadway

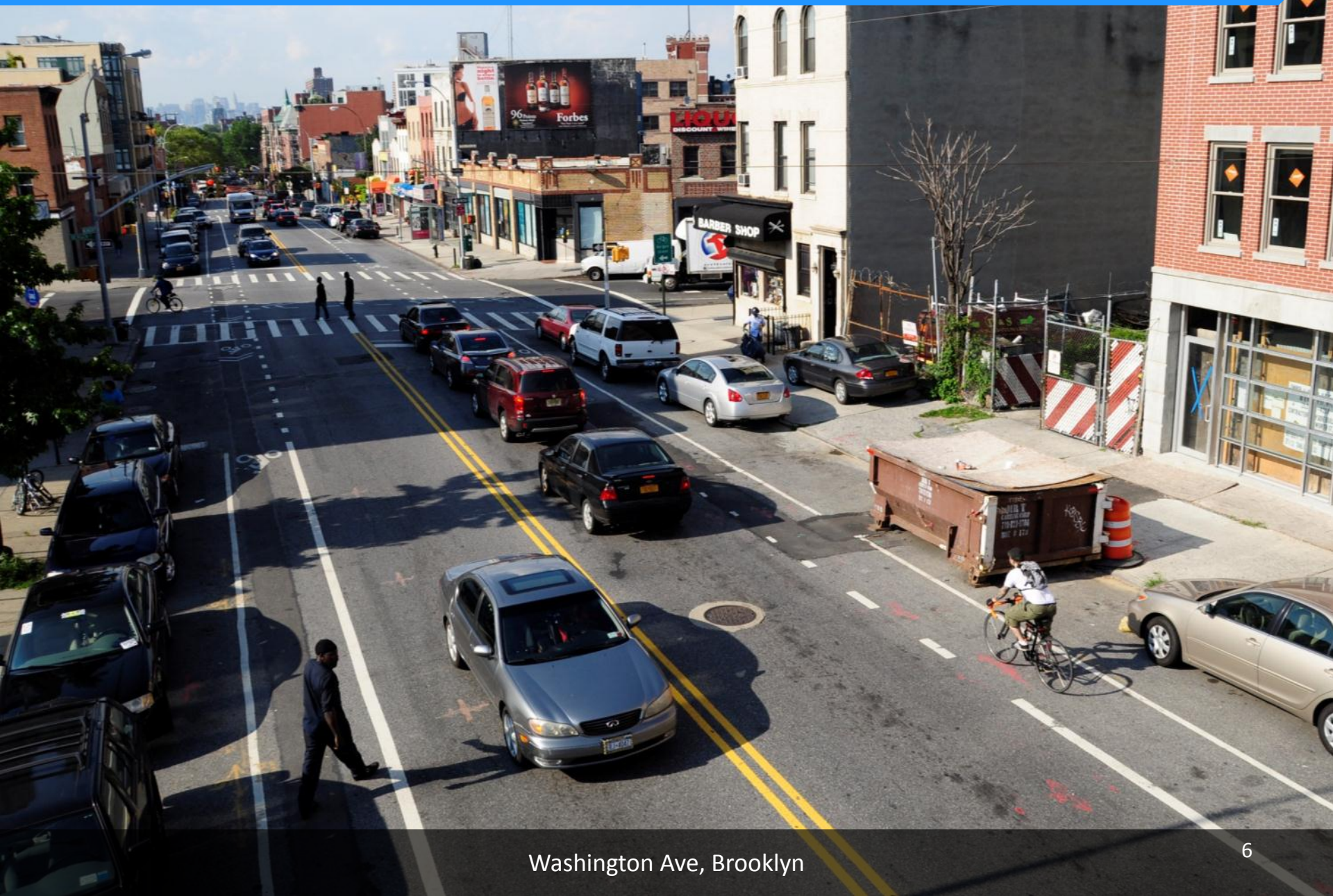
Wide travel lanes

# Proposed Improvements – E 138<sup>th</sup> St





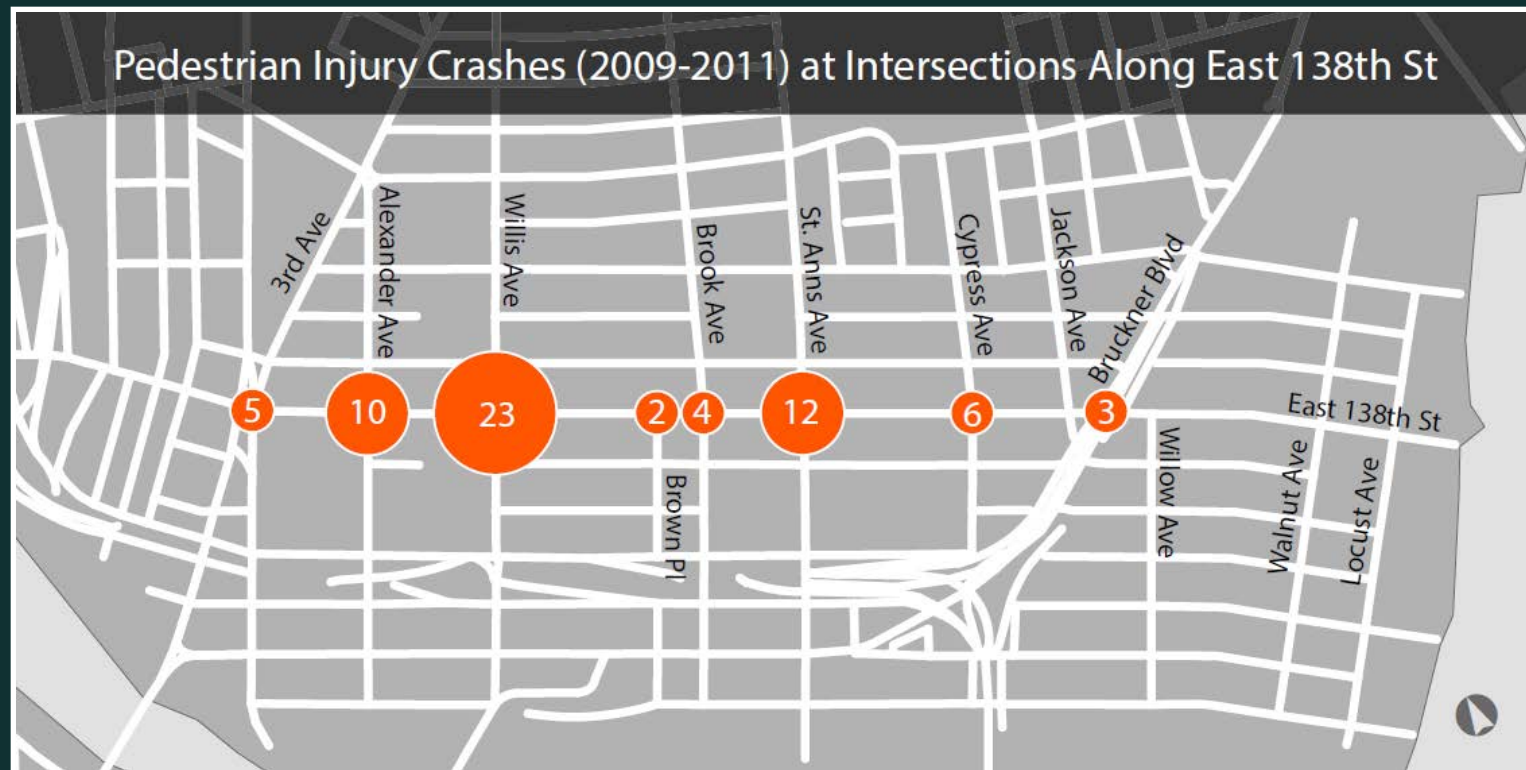
# Example of Traffic Calming Design: Bike Lane



Washington Ave, Brooklyn

# E 138<sup>th</sup> St Pedestrian Safety Issues

- Top 10% of Bronx corridors for traffic-related deaths and serious injuries
- 65 pedestrian injury crashes from 2009-2011 at E 138<sup>th</sup> St intersections east of 3<sup>rd</sup> Ave
- 9 pedestrian/motor vehicle crashes since December 2012





# Proposed Improvements – E 138<sup>th</sup> St

Install painted curb extensions:

- Willis Ave
- St. Anns Ave
- Cypress Ave

Curb extension benefits:

- Shorten crossing distance
- Slow turning vehicles



Dean St, Brooklyn



# Existing Conditions – Jackson Ave



36 feet wide two-way roadway



# Existing Conditions – Walnut Ave

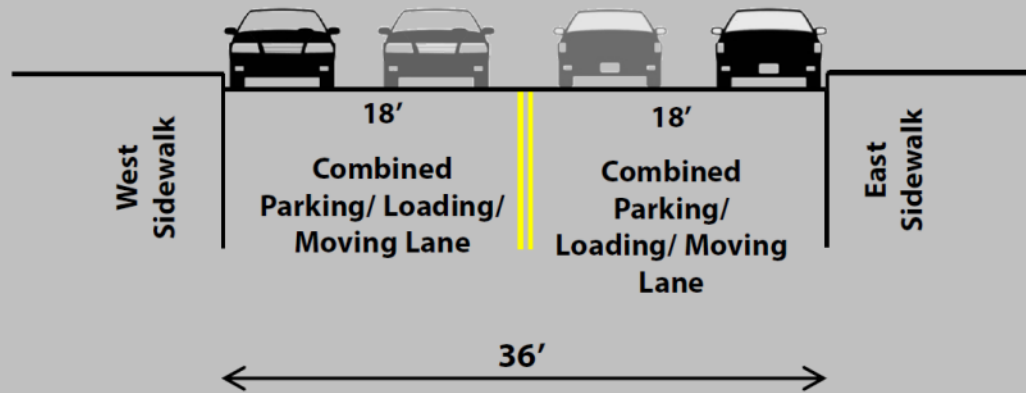


36 feet wide two-way roadway

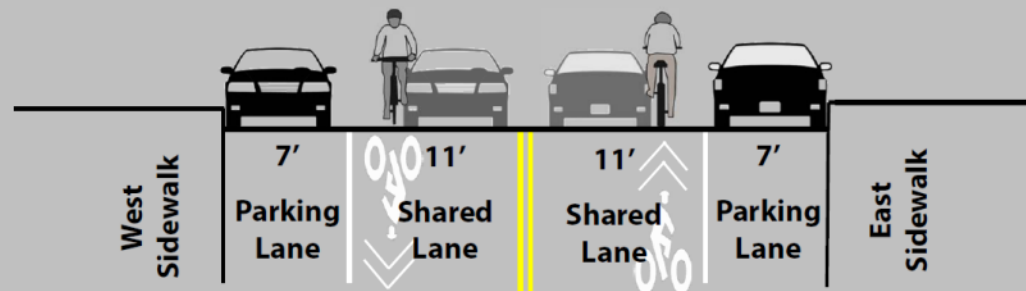


# Proposed Improvements: Jackson Ave and Walnut Ave

## EXISTING



## PROPOSED



# Existing Conditions – E 132<sup>nd</sup> St



30 feet wide two-way roadway



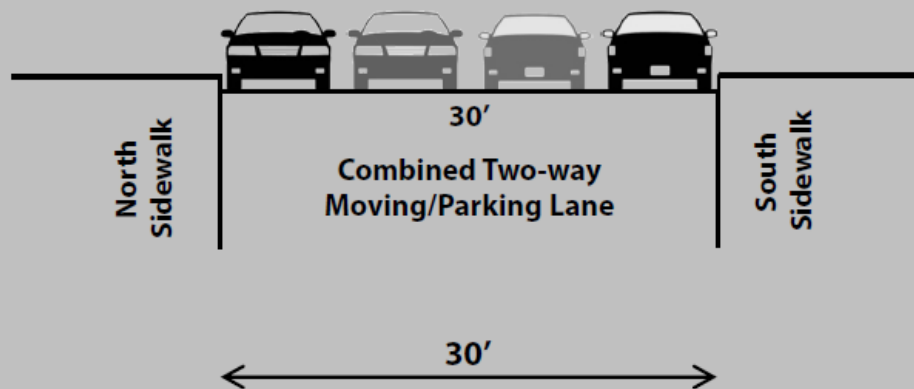
# Existing Conditions – E 145<sup>th</sup> St



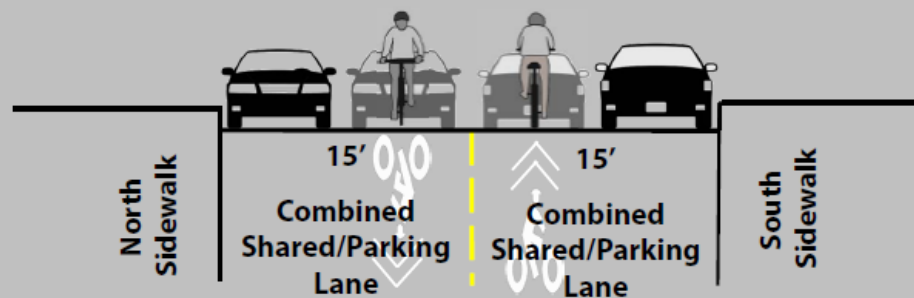
30 feet wide two-way roadway

# Proposed Improvements: E 132<sup>nd</sup> St and E 145<sup>th</sup> St

## EXISTING



## PROPOSED





# Example of Traffic Calming Design: Shared Lane



# Project Summary

- Organizes traffic
- Reduces reckless driving
- Reduces crossing distances on E 138<sup>th</sup> St for pedestrians
- Provides a crosstown bicycle route
- Connects community to planned Randall's Island Connector bridge
- No planned parking or travel lane removal
- Proposed implementation August 2013



Questions?

Thank  
You