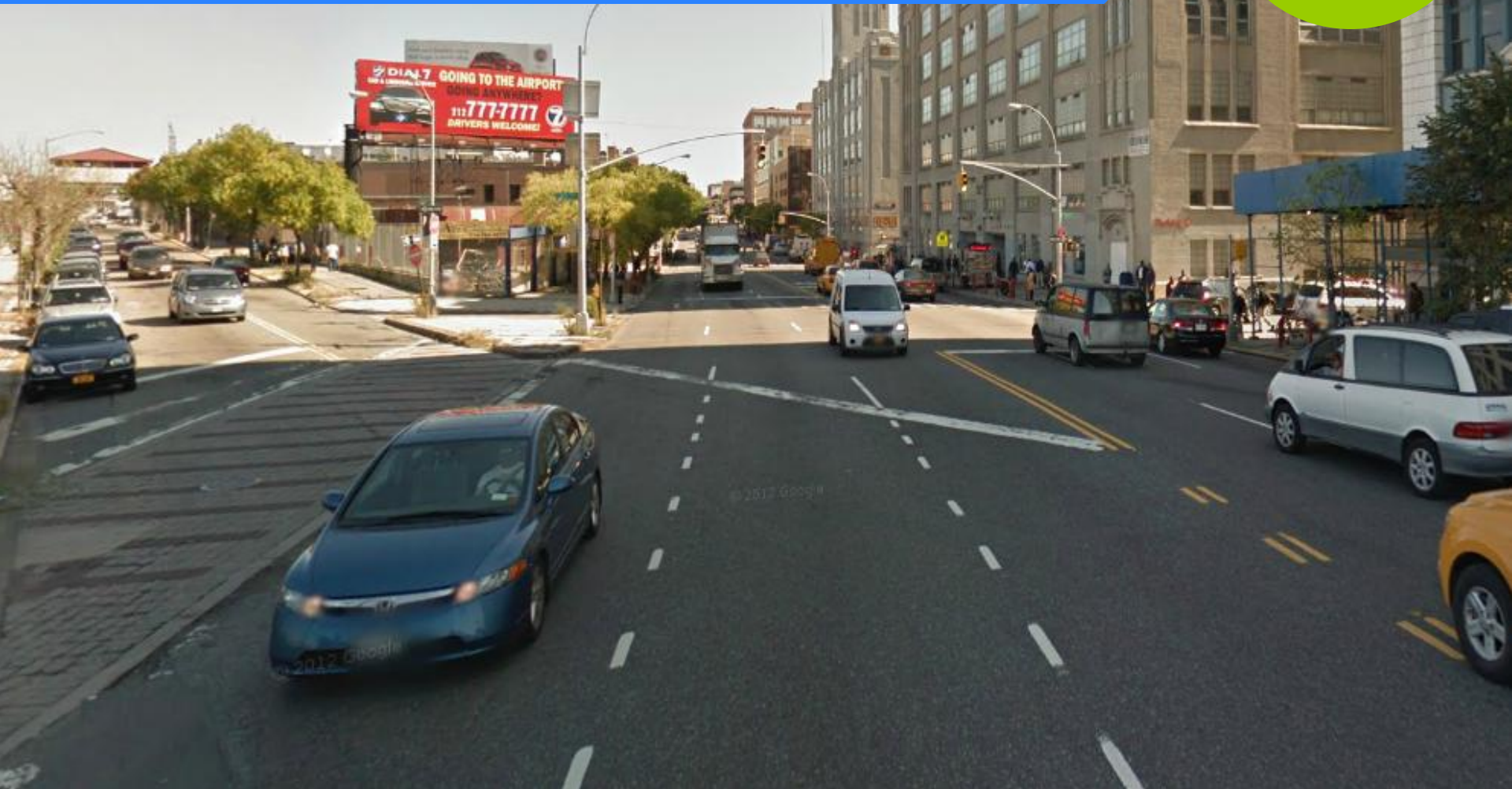


# Thomson Ave & Skillman Ave

## Pedestrian & Traffic Safety Improvements

### CB2 - Traffic & Transportation Committee

May  
2013





- December 2012 / January 2013 - DOT receives requests from CB2, CM Van Bramer and LaGuardia College for improvements at Thomson Ave & Van Dam Street
- 3/11/13 - Student Fatality
- 3/28/13 - DOT Meeting with LaGuardia College
  - Traffic consultant to conduct neighborhood traffic safety study
- 4/16/13 - DOT implemented signal improvements
- Mid April – sign improvements and refurbishments at Thomson Ave & Van Dam St
- Marking refurbishments ongoing

# Thomson Ave & Skillman Ave – Implemented Signal improvements

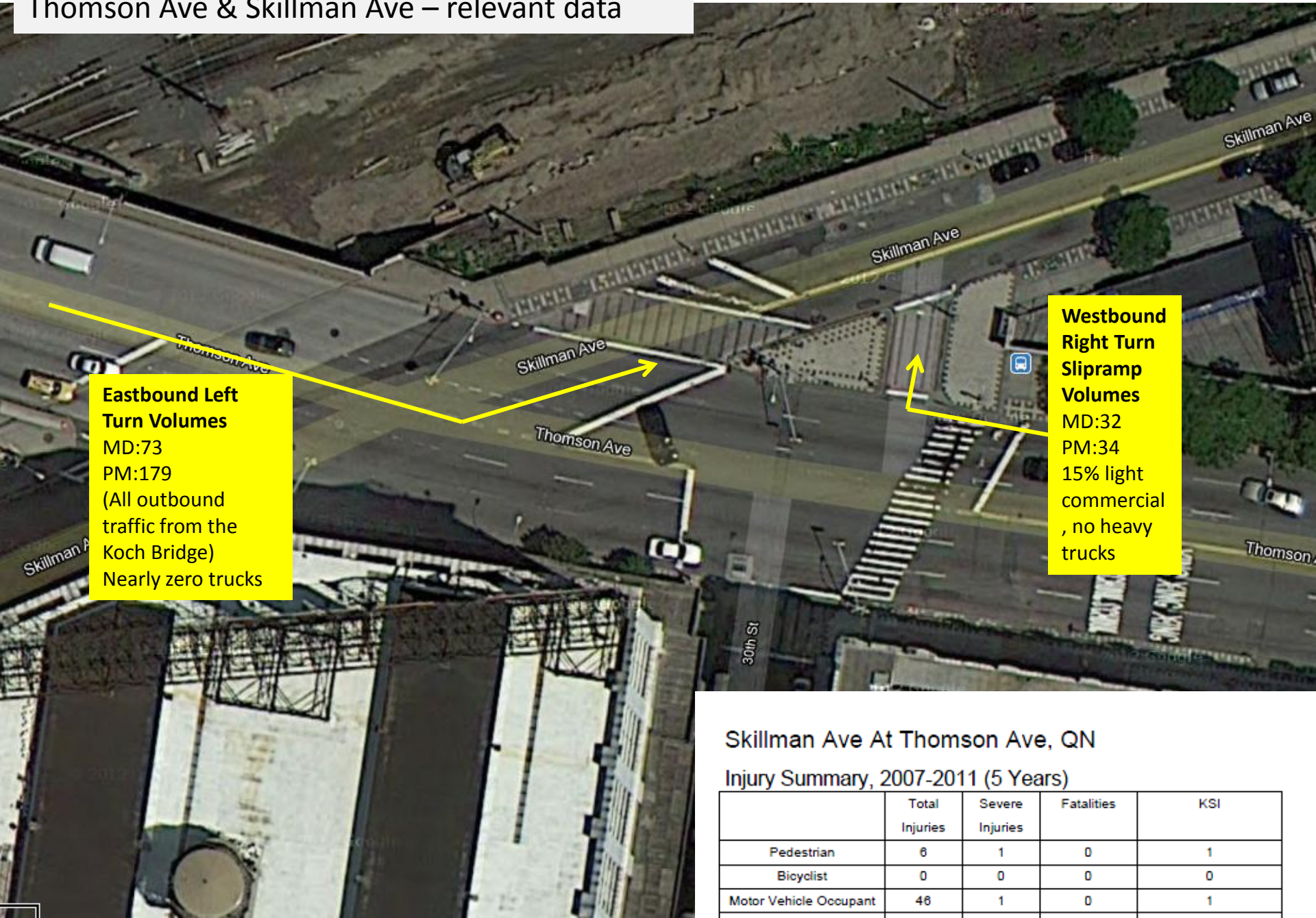


2 New Countdown Signals (also @ 30<sup>th</sup> Pl, 31<sup>st</sup> St, 31<sup>st</sup> Pl)

Hold Peds when Thomson is Green

Will study Thomson Ave to evaluate need for Electronic speed display signs

# Thomson Ave & Skillman Ave – relevant data



**Eastbound Left Turn Volumes**  
 MD:73  
 PM:179  
 (All outbound traffic from the Koch Bridge)  
 Nearly zero trucks

**Westbound Right Turn Slipramp Volumes**  
 MD:32  
 PM:34  
 15% light commercial , no heavy trucks

## Skillman Ave At Thomson Ave, QN Injury Summary, 2007-2011 (5 Years)

	Total Injuries	Severe Injuries	Fatalities	KSI
Pedestrian	6	1	0	1
Bicyclist	0	0	0	0
Motor Vehicle Occupant	46	1	0	1
<b>Total</b>	<b>52</b>	<b>2</b>	<b>0</b>	<b>2</b>

# Thomson Ave & Skillman Ave slip ramp – Current Conditions



# Thomson Ave & Skillman Ave slip ramp – Proposed Slipramp Closure



# Thomson Ave & Skillman Ave – Proposed Slip Ramp Closure & EB Left Turn Ban



6 planters  
LaGuardia  
College to  
maintain



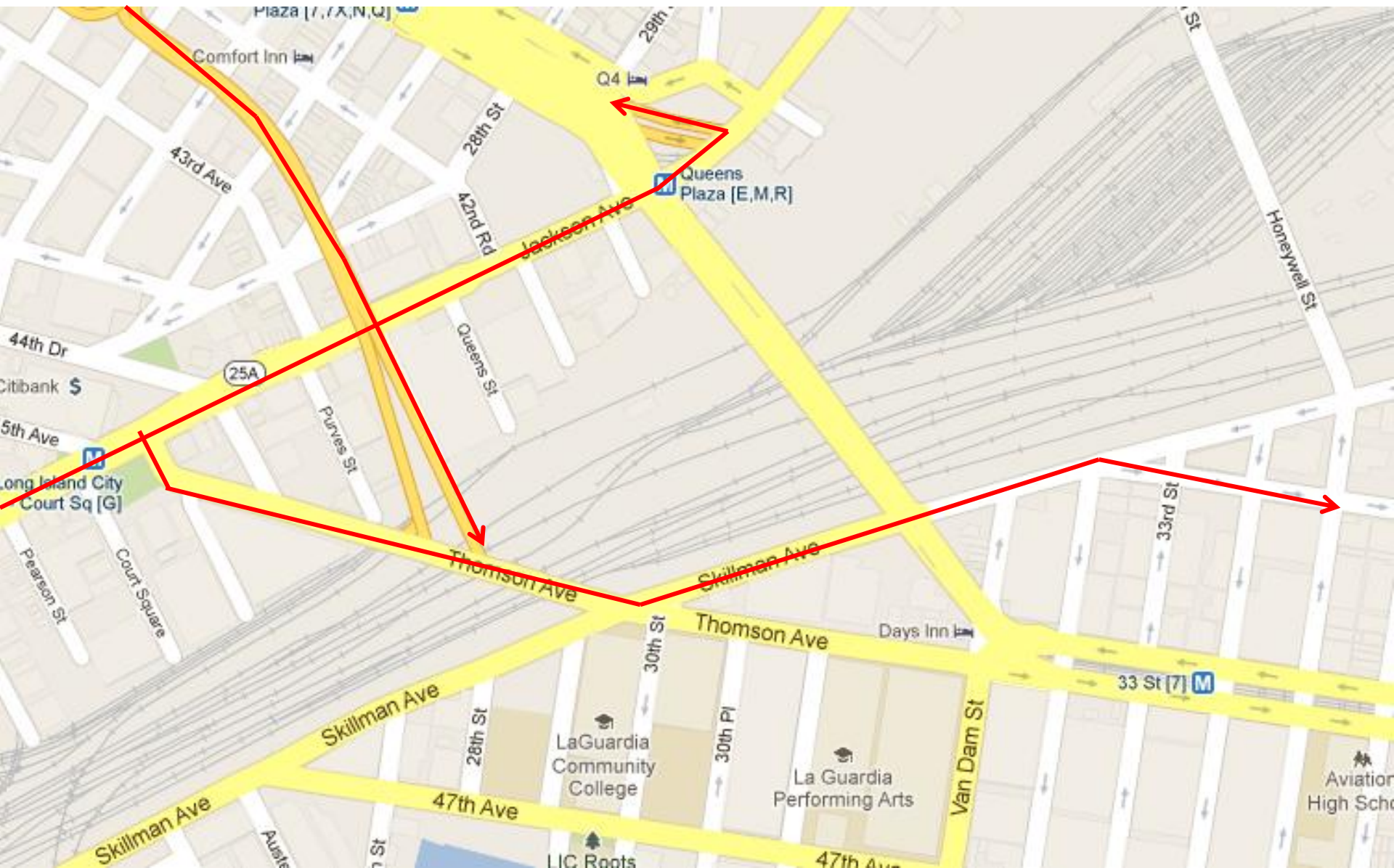
Kwik Kurb



Other options to  
"harden" this edge:  
granite blocks or guard  
rail



DOT currently working  
with FDNY to ensure  
emergency services  
access









- Other area of concern – 30<sup>th</sup> St Crosswalk
  - Extremely high pedestrian volumes
  - High School and College students
  - Frequent Vehicle Pedestrian Conflicts

# Other Potential Safety Changes

- Additional turn bans
- Network changes
- Comprehensive pedestrian and traffic improvements at key intersections

