

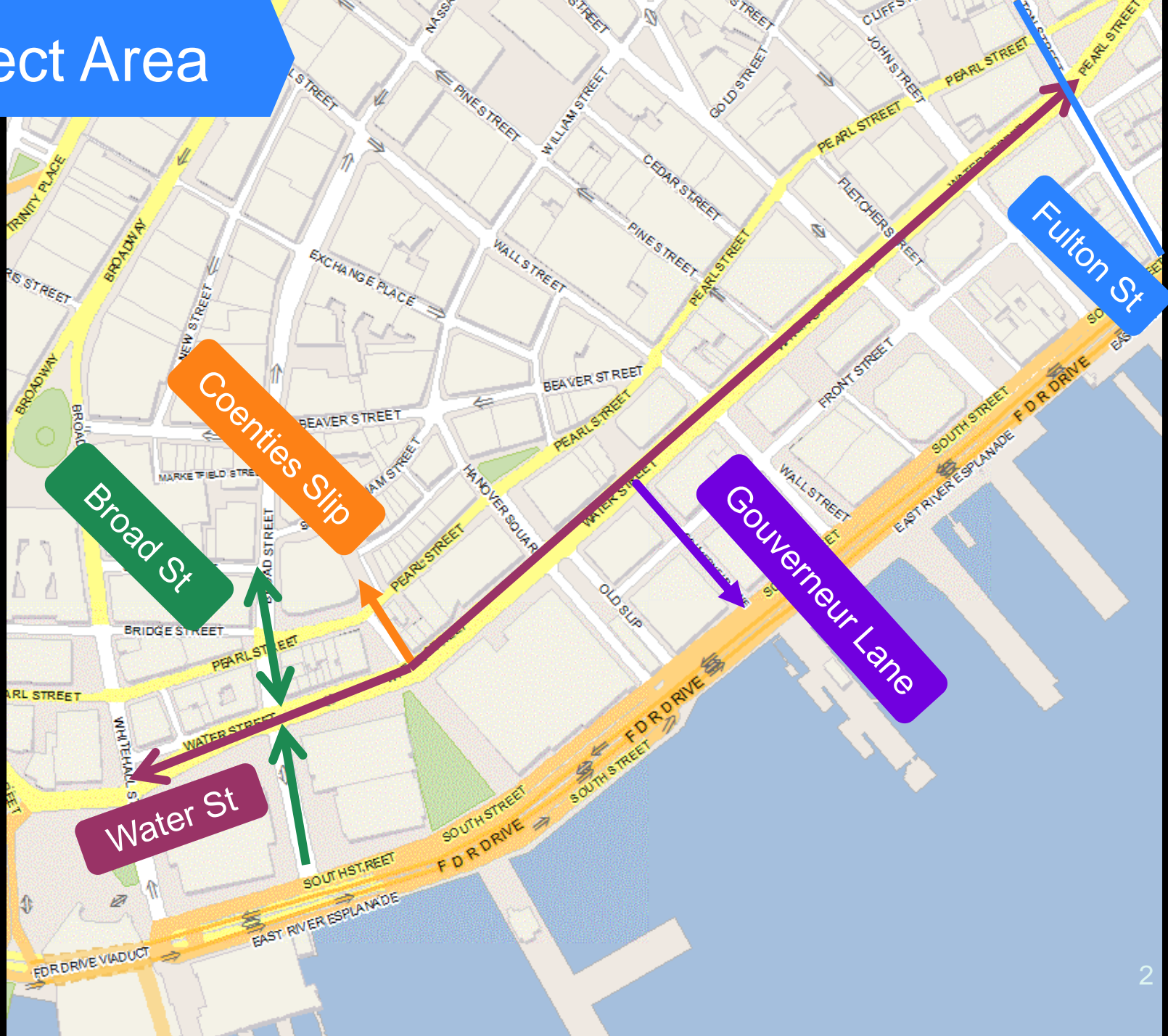
Water Street

Corridor Enhancements

2013



Project Area



Broad St

Coenties Slip

Water St

Gouverneur Lane

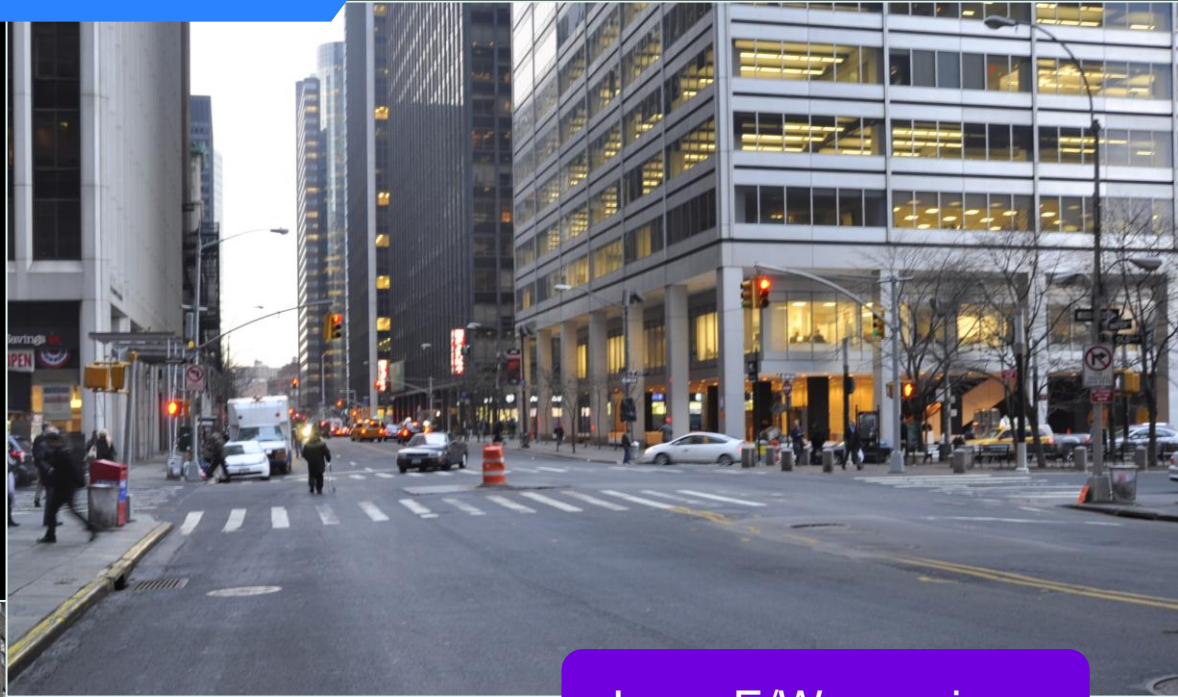
Fulton St

General Characteristics

- Heavy pedestrian crossing volumes
- Long E/W crossings
- Underutilized curbside space
- Uninviting waterfront accessways
- Low S/B volumes



Existing Conditions



Heavy pedestrian volumes

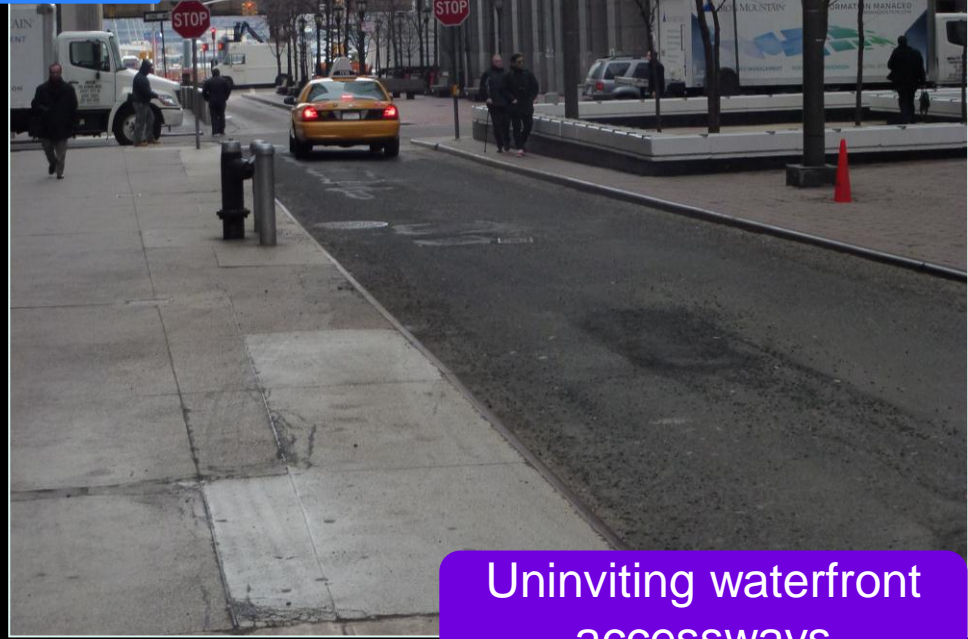
Long E/W crossings



Water St Existing Conditions



Low S/B volume



Uninviting waterfront accessways



Underutilized curbside space

Goals

- Heavy pedestrian crossing volumes → • Improve pedestrian mobility
- Long E/W crossings → • Improve safety and access
- Underutilized curbside space → • Assess curbside regulations & bus stops
- Uninviting waterfront access → • Improve access to waterfront
- Low S/B volumes → • Match number of lanes to volume

Rapid Response Toolkit

- Pavement markings
- New signage
- Painted and/or textured surfaces
- Flexible delineators
- Curb regulation modifications



Rapid Response Toolkit

Painted Sidewalk Extension Examples



Canal St at E. Broadway
Lower East Side




Water and Whitehall Street

Proposed Plan



1. Shorten Crosswalks



Extend existing plaza space at Whitehall north to Broad into underutilized roadway

Painted neckdowns reduces crossing distances and improves crosswalk alignment

Painted neckdowns improve crosswalk alignment

Proposed Plan



View north on
Water from Moore

2. New Public Space

Pier 11 Ferry



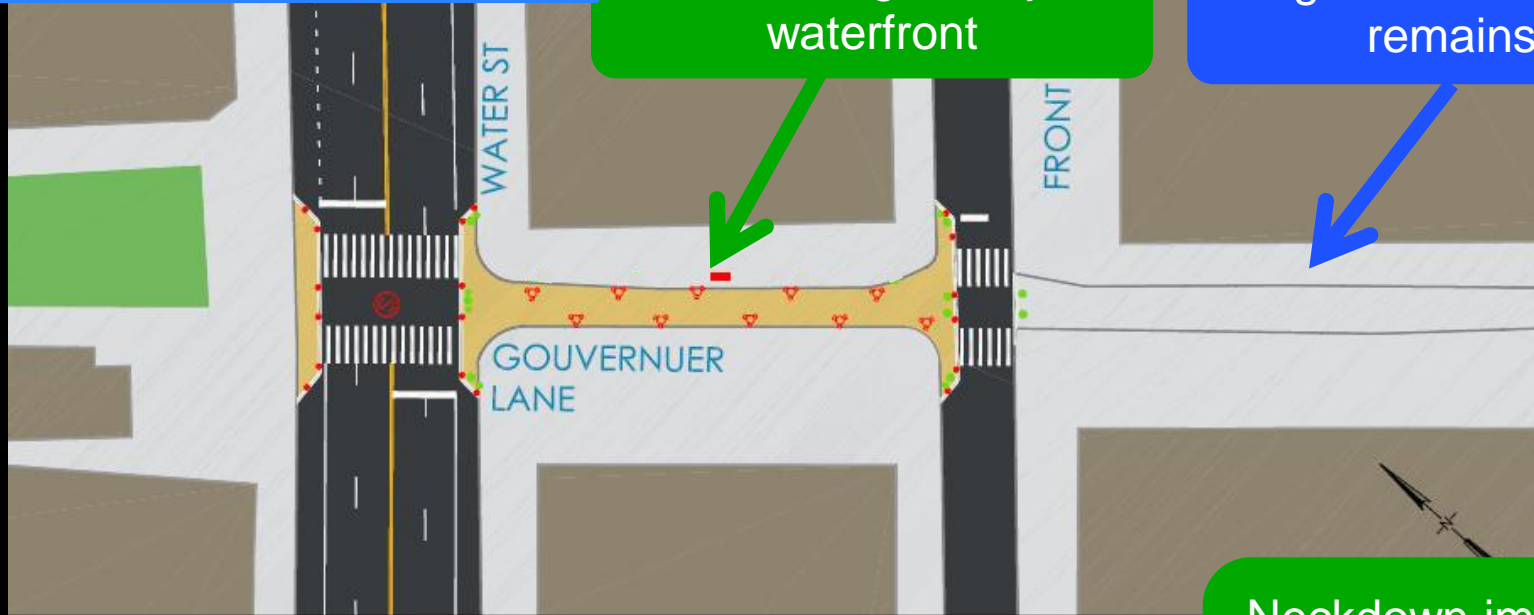
Gouverneur Lane is a popular route to/from ferry and waterfront park



Low volume
Coenties Slip is a desirable pedestrian path around park programming



2. New Public Space



Enhanced gateway to waterfront

Belgian block surface remains



Closed low volume slip improves mobility along pedestrian desire lines

Neckdown improves crosswalk alignment and better defines intersection

Proposed Plan



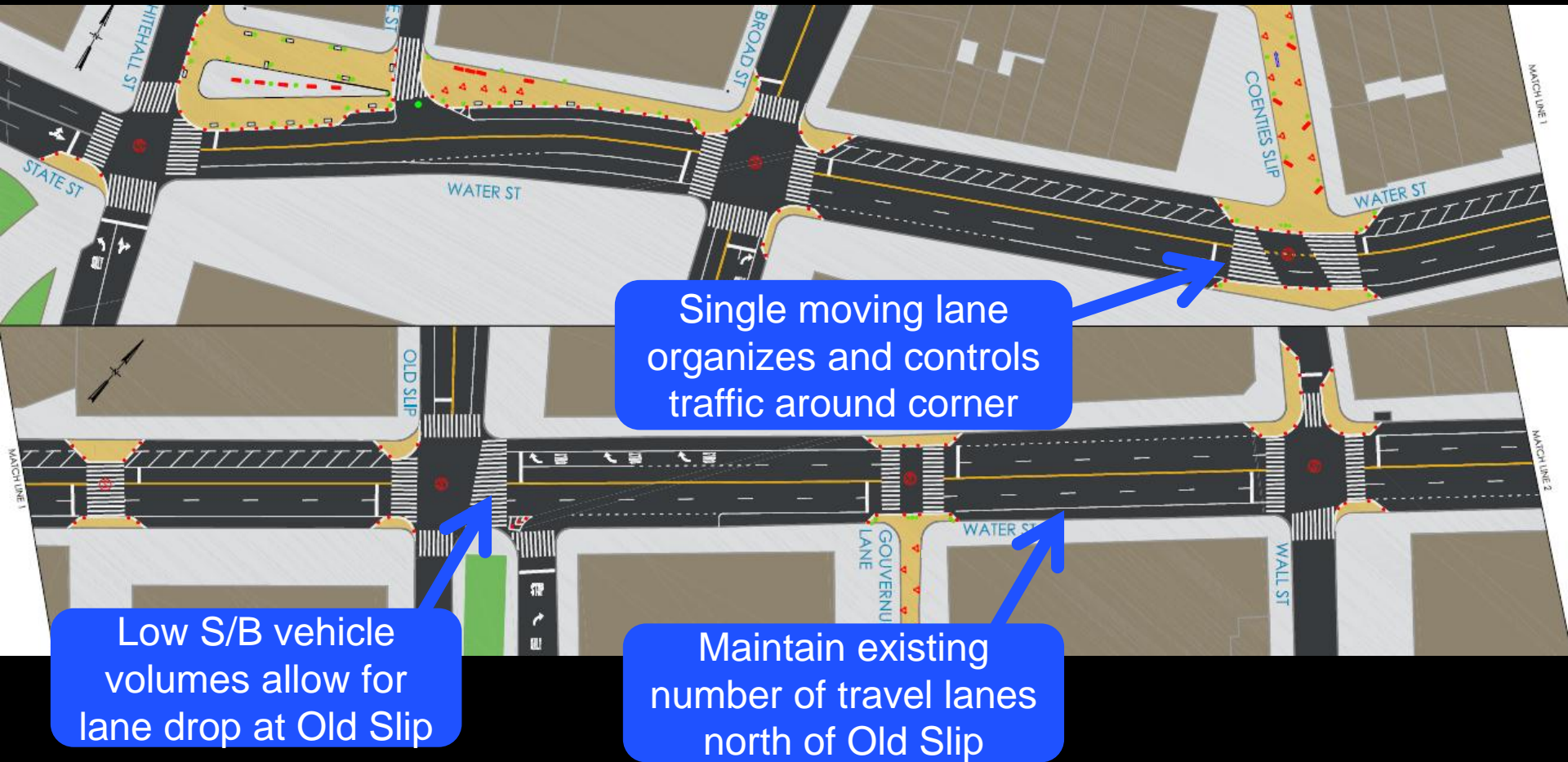
View west on
Gouverneur St

Proposed Plan



View east on
Coenties Slip

3. Match Travel Lanes to Volume



4. Consolidate/Relocate Bus Stops

Existing bus stop moved to nearside of intersection

Investigating time of day bus stop with off peak loading regulations



All corridor curb regulations and bus stops being studied for more efficient usage

Existing truck loading moved to far side of intersection

Proposal Summary



1. Add gravel neckdowns on Water St between Whitehall St and Fulton St to shorten crossings
2. Convert Gouverneur St and Coenties Slip to pedestrian areas protected by granite blocks, planters, and flexible delineators that are programmed with chairs and tables.
3. Drop one S/B moving lane beyond Old Slip to match number of lanes with vehicle volumes
4. Assess curbside regulations and bus stops for more efficient usage



www.nyc.gov/dot

Thank
You