



Water Street Corridor

Making Improvements and Taking
Steps Toward Transformation



March 19, 2013

Water Street Corridor :: Project



Water Street Corridor :: 2009/2010 :: ADNY/Starr Whitehouse & FX Fowle

Existing Conditions Goal & Principles Anchor to Anchor Water to Water Day to Night

Principles

Anchor to Anchor: Create a distinctive boulevard that accommodates dynamic uses.

Water to Water: Activate open space and the riverfront network.

Day to Night: Extend the hours of Water Street and engage pedestrians.

Creating a new Vision & Identity

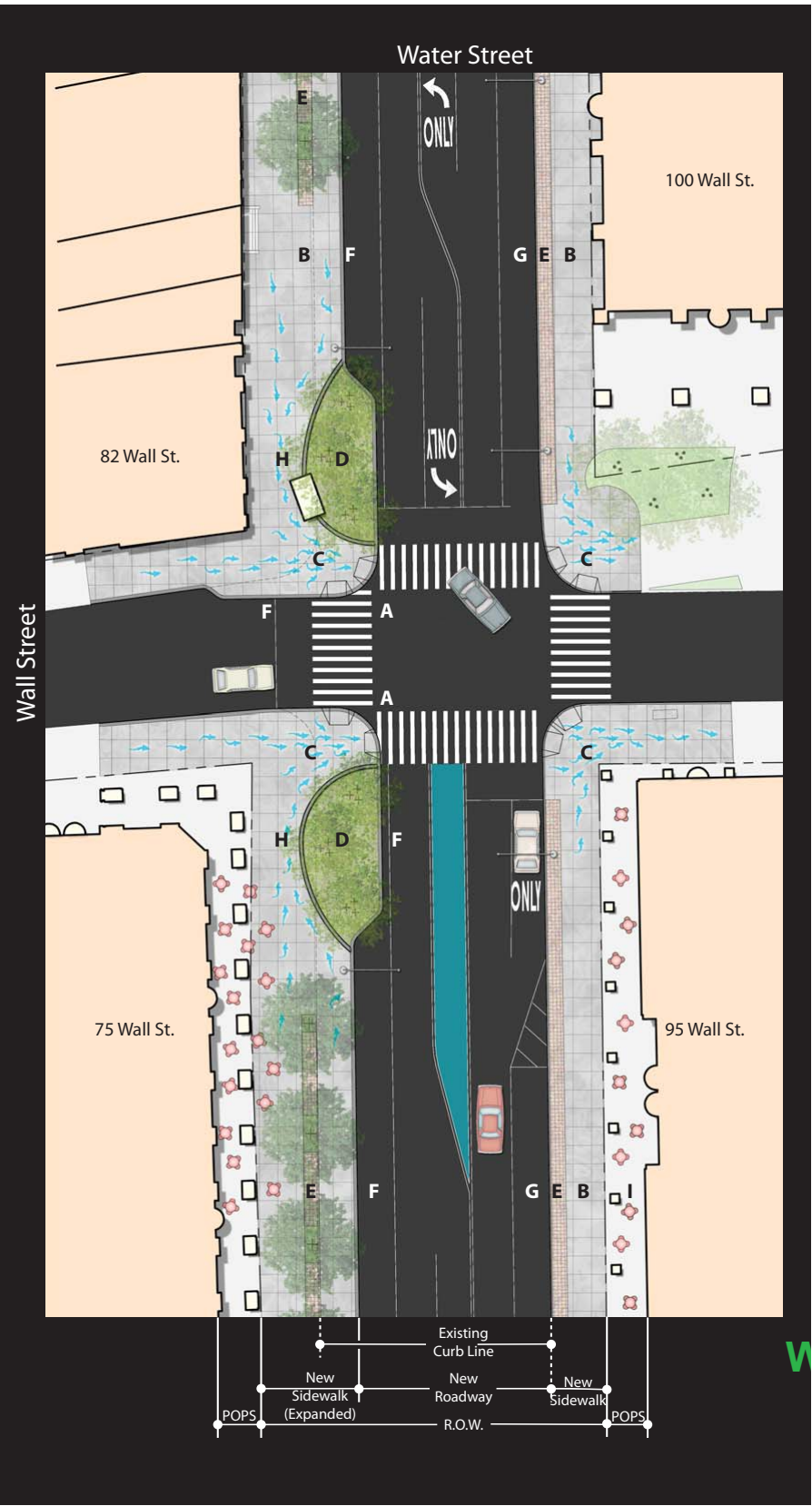
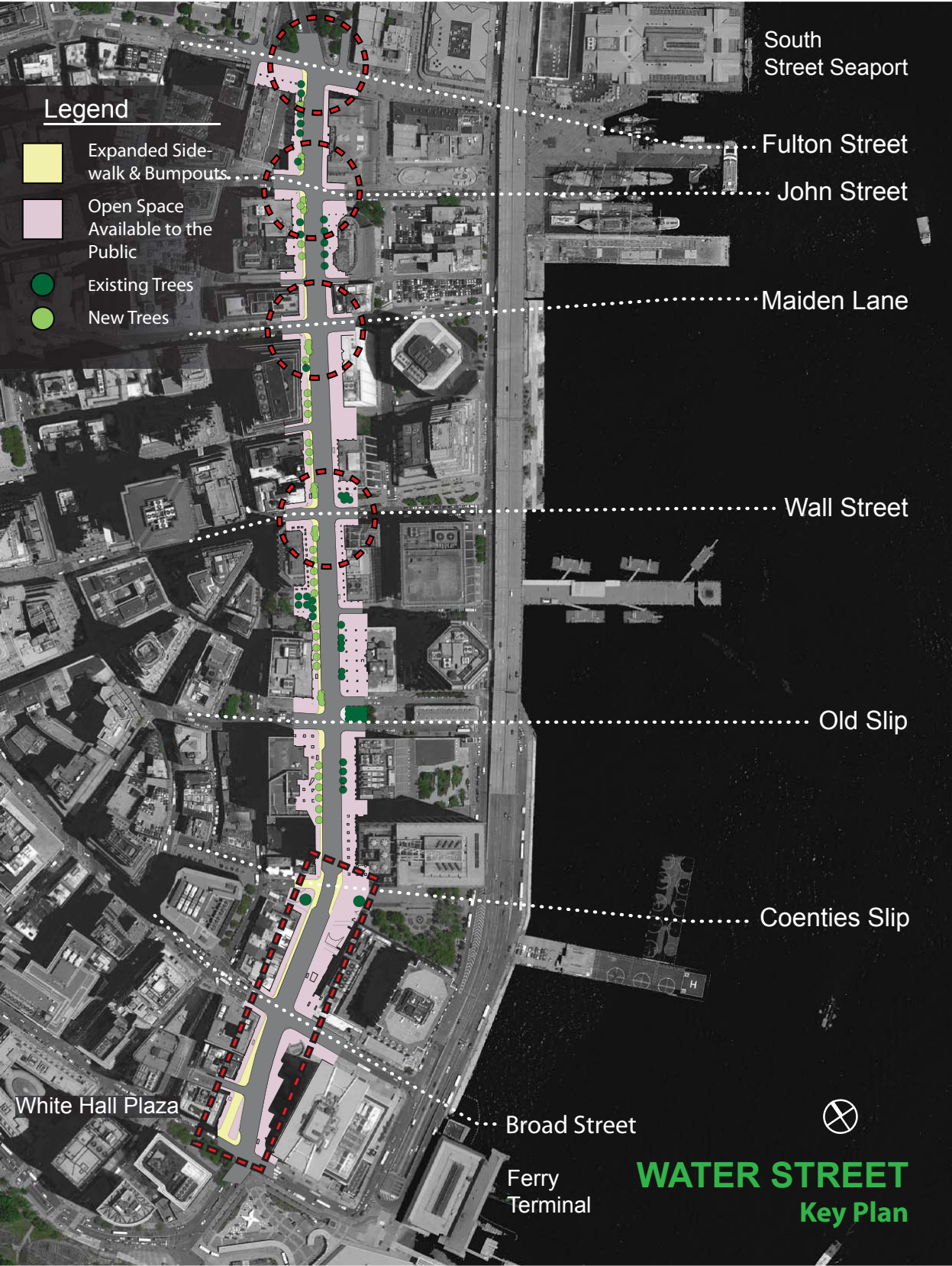
Study completed – May 2010



ALLIANCE FOR DOWNTOWN NEW YORK | STARR WHITEHOUSE / FXFOWLE
DRAFT – CONFIDENTIAL 02/10/10 12

Starr Whitehouse/ADNY

Water Street Corridor :: 2011/2012 :: EDC/RBA



Develop plan for capital reconstruction & amenities

Kickoff with DOT – July 2011

Study completed – Fall 2012

EDC/RBA



Water Street Corridor :: 2013 :: City Hall - DOT - DCP - EDC - ADNY



Goals

- Implement interim and longer-term improvements to create a more vibrant, visually-cohesive, pedestrian-friendly Water Street corridor
- Enhance existing streetscape and open spaces and strengthen east-west linkages between the downtown core and waterfront
- Set the foundation for long-term transformation of the area

Objectives

- Post-Sandy Rapid Response Coordination
- Pedestrian Safety Improvements and Curb Regulation Modifications
- Temporary Public Spaces and East-West Linkages
- Streetscape Design Toolkit Installation

Water Street Corridor :: Assessment :: Previous and Current Streetscape



Water Street, Looking South



Front Street, Looking South

Corporate and retail façades
Large-scale buildings
Four travel lanes and two parking/loading lanes

Mix of historic and corporate character
Small- and large-scale buildings
One travel lane and two parking/loading lanes

Water Street Corridor :: Assessment :: Previous and Current Streetscape



Long Pedestrian Crossings



Low S/B traffic volumes



Heavy Pedestrian Volumes



Underutilized curb space

Water Street Corridor :: Assessment :: Previous and Current Streetscape



Inconsistent Paving & Lack of Amenities



Uninviting waterfront access



Loading Docks



Underused POPS

Water Street Corridor :: Rapid Response Toolkit

- Pavement Marking
- New Signage
- Painted and/or Textured Surfaces
- Flexible Delineators
- Curb Regulation Modifications



Canal St at E. Broadway, LES

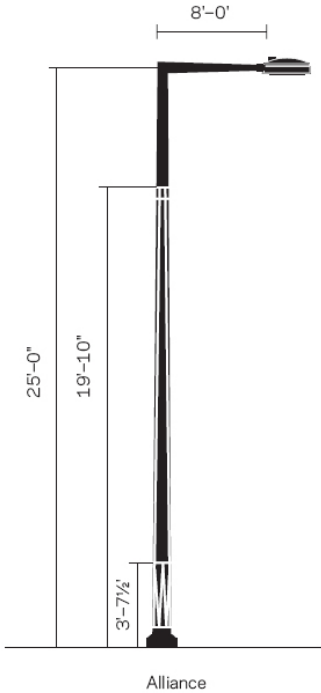


Allen Street

Water Street Corridor :: Streetscape Design Toolkit



Lighting



Pedestrian Improvements



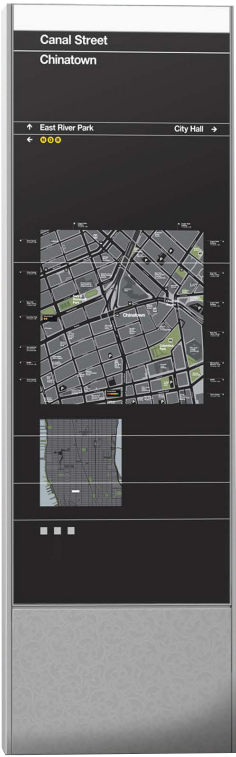
Tree Planting



Benches



Movable Tables/Chairs

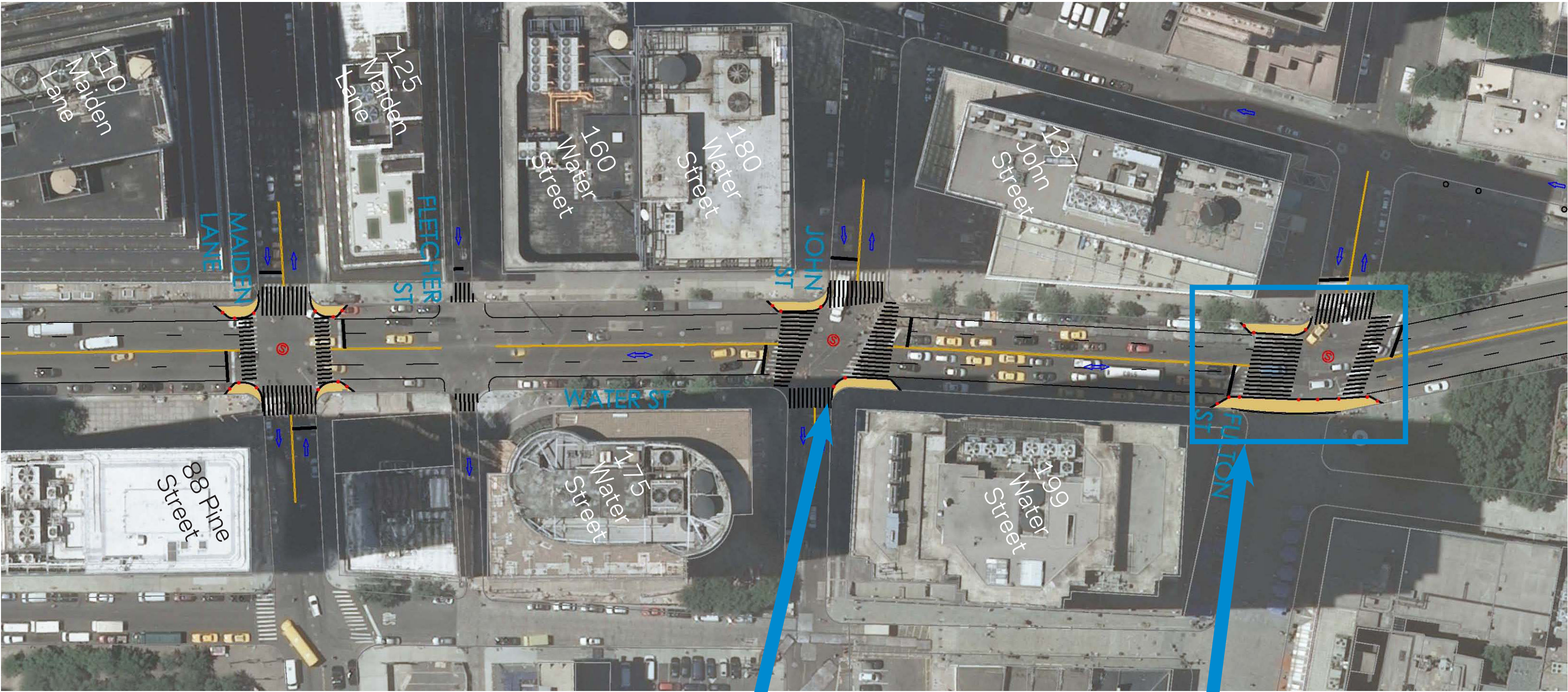


Wayfinding

Water Street Corridor :: Overview



Water Street Corridor :: Segment 1 :: Wall St to Fulton St



Painted neckdowns improve crosswalk alignment

Fulton St area to be determined

Water Street Corridor :: Segment 1 :: Improved Crossings



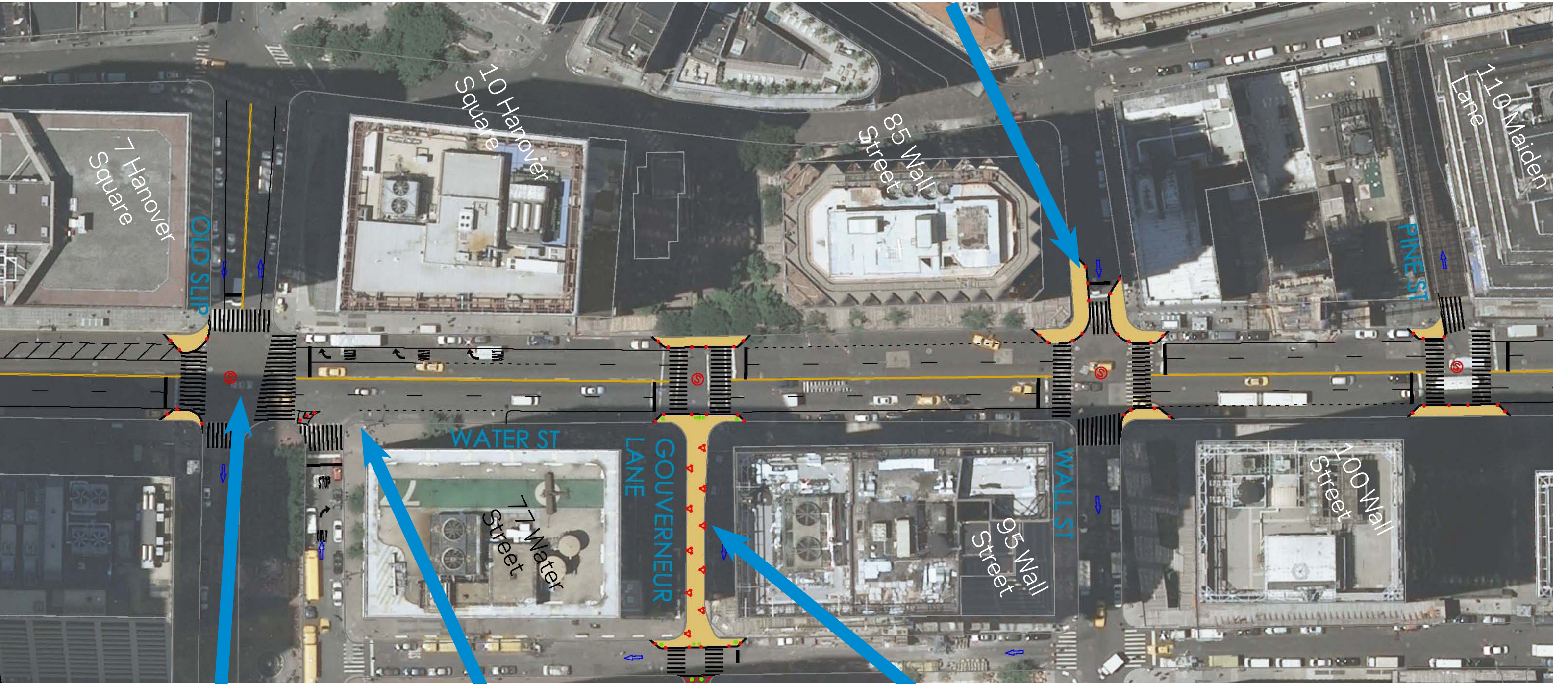
Whitehall Street and Bridge Street



Delancey and Bowery Streets

Water Street Corridor :: Segment 2 :: Coenties Slip to Wall St

Painted neckdowns reduce crossing distances and improves crosswalk alignment



Low S/B vehicle volumes allow for lane drop at Old Slip

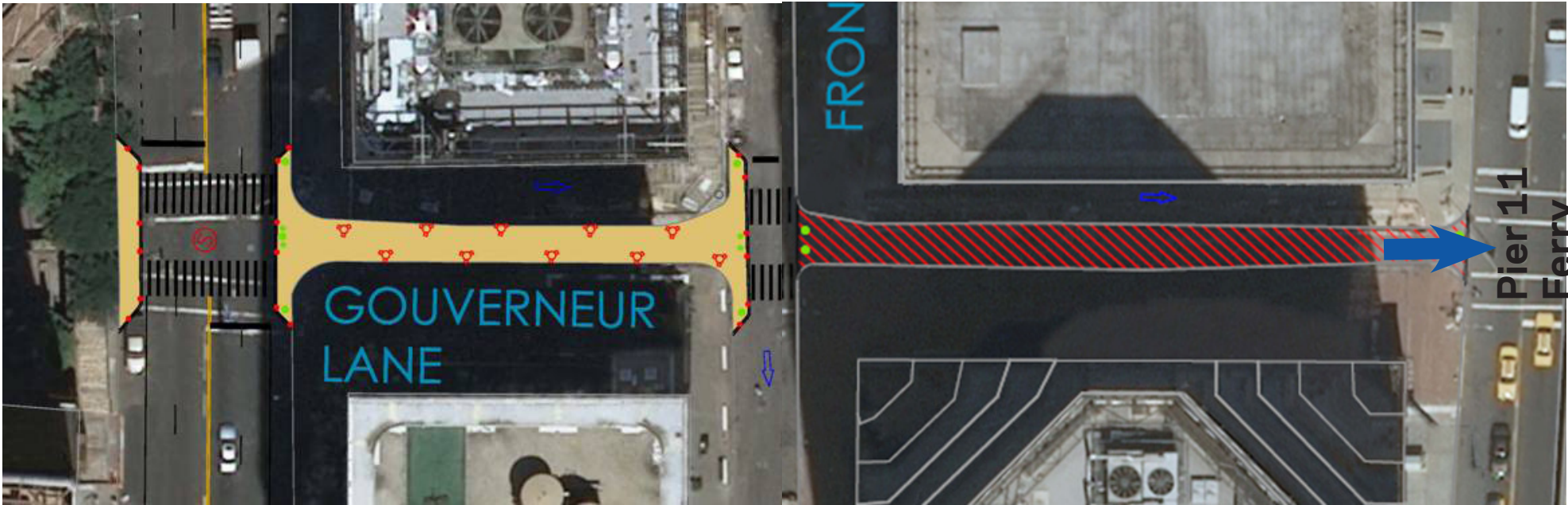
Maintain existing number of travel lanes north of Old Slip

Enhanced gateway to waterfront and ferry

Water Street Corridor :: Segment 2 :: Gouverneur Lane



Gouverneur Lane

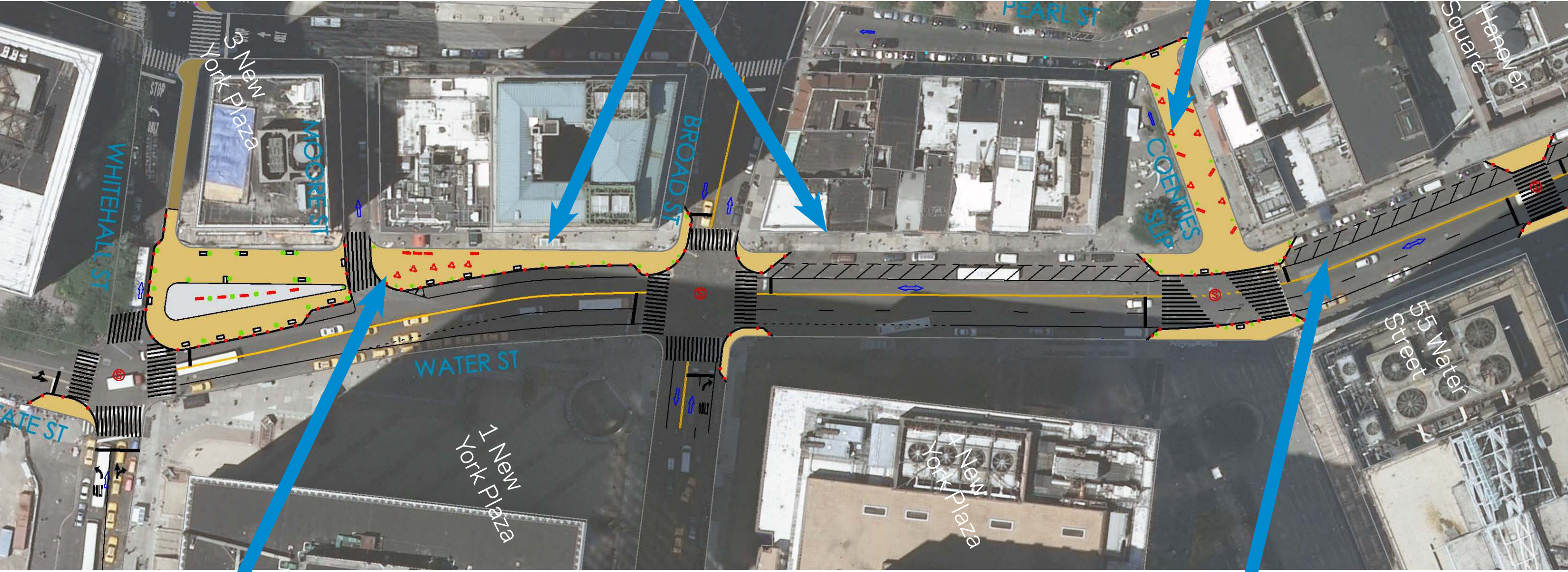


Delancey Street

Water Street Corridor :: Segment 3 :: Whitehall to Coenties Slip

Existing bus stops moved to nearside of intersection and existing truck loading moved to far side of intersection

Closed low volume slip improves mobility along pedestrian desire lines



Extend existing plaza space at Whitehall north to Broad into underutilized roadway

Single moving lane organizes and controls traffic around corner

Water Street Corridor :: Segment 3 :: Public Spaces :: Existing

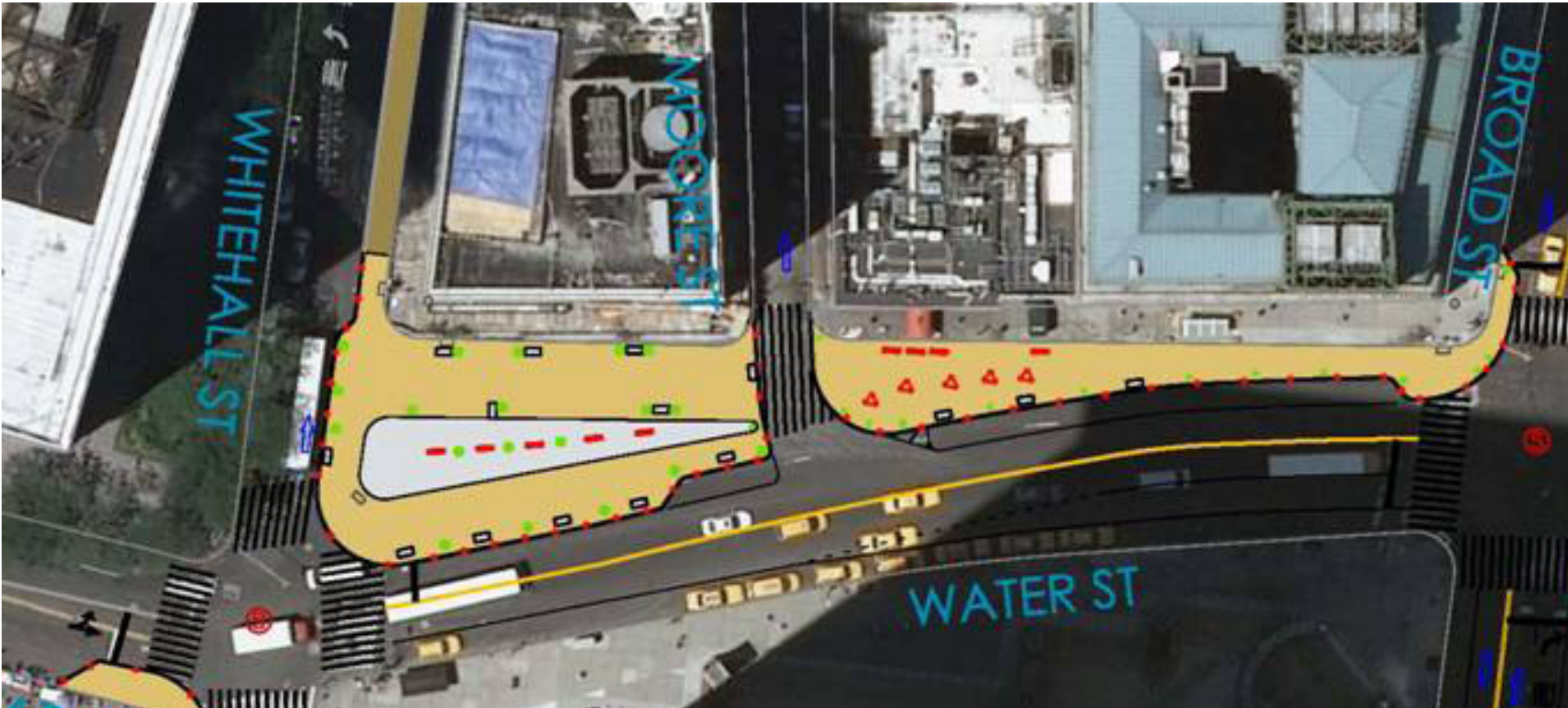


Water and Whitehall Street



Coenties Slip

Water Street Corridor :: Segment 3 :: Public Spaces :: Proposed



Water and Whitehall Plaza



Madison Square - Fifth Avenue and Broadway

Water Street Corridor :: Corridor-wide :: Curb Regulations

Curb Regulations

- Adding metered parking at underutilized curbs
- Combining express bus stops where appropriate
- Adding midday loading/standard weekend parking at time of day bus stops



Water Street Corridor :: Corridor-wide :: Tree Planting

Tree Planting

- Coordinate with DPR to evaluate current tree conditions during spring
- Determine where to plant
- Identify new locations based on improved geometry and new curb regulations



Water Street Corridor :: Corridor-wide :: CityBench

CityBench

- 4 Existing CityBenches installed on Water Street
- Examining potential additional locations, especially at bus stops along the corridor



Water Street Corridor :: Corridor-wide :: Wayfinding :: Overview



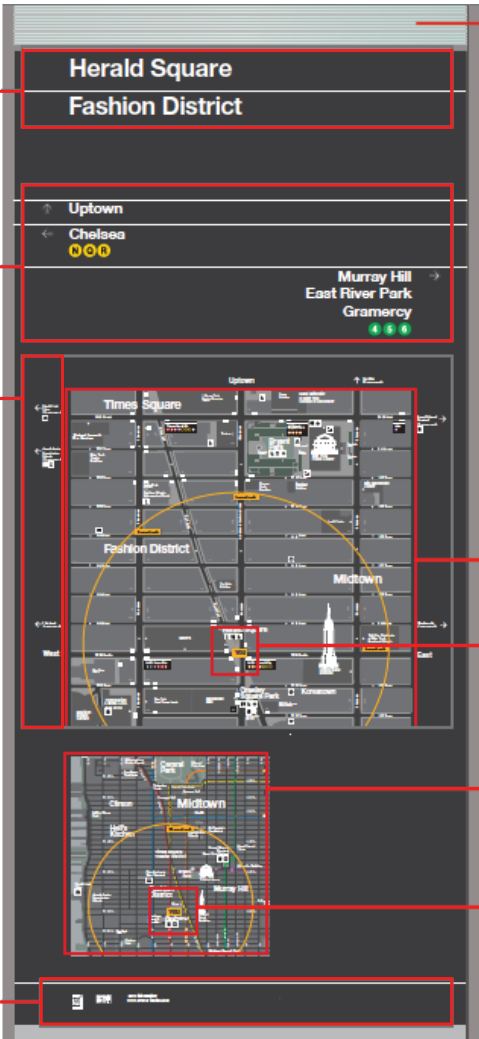
Locator

Directions

Off map pointers

Identity Elements:
Color
Typography
Pictograms
Illustration

Endorsement Links

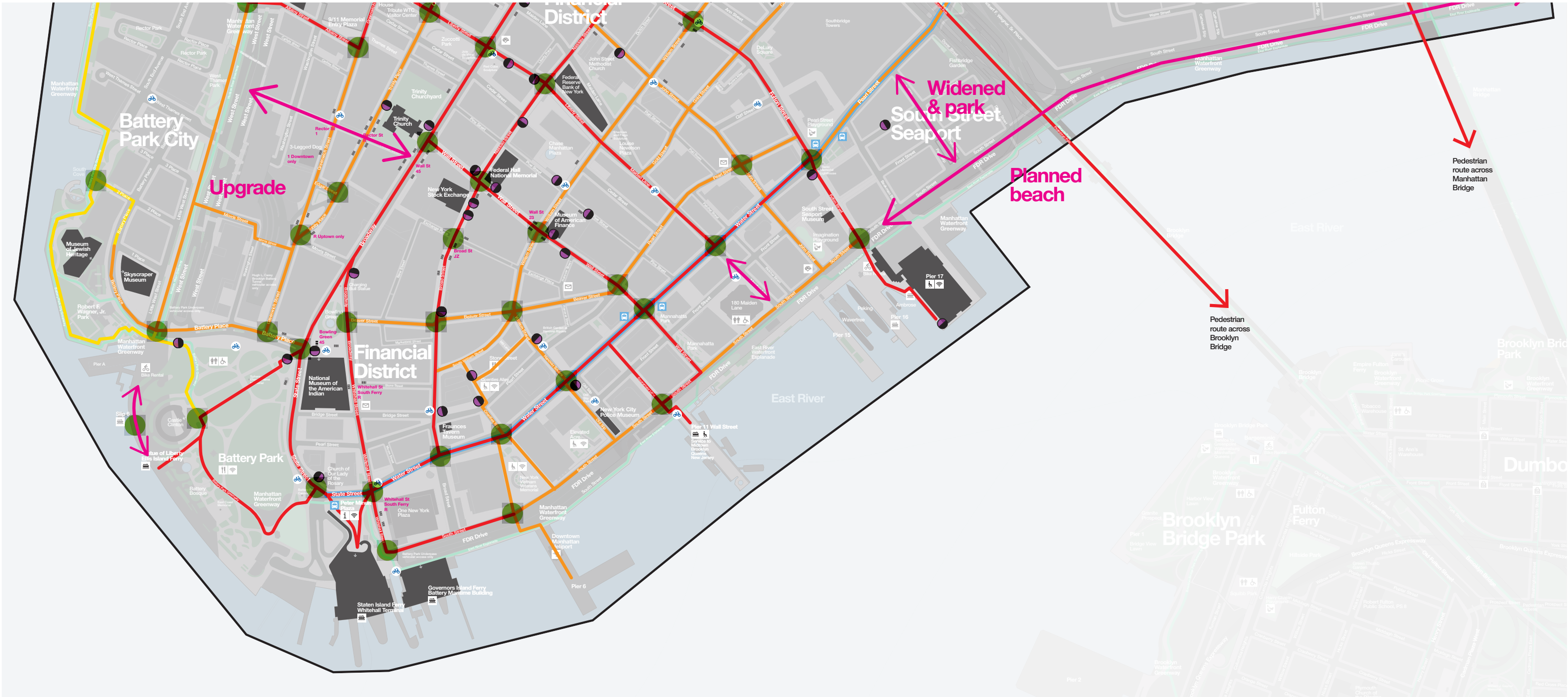


Focus map

Orientation Map

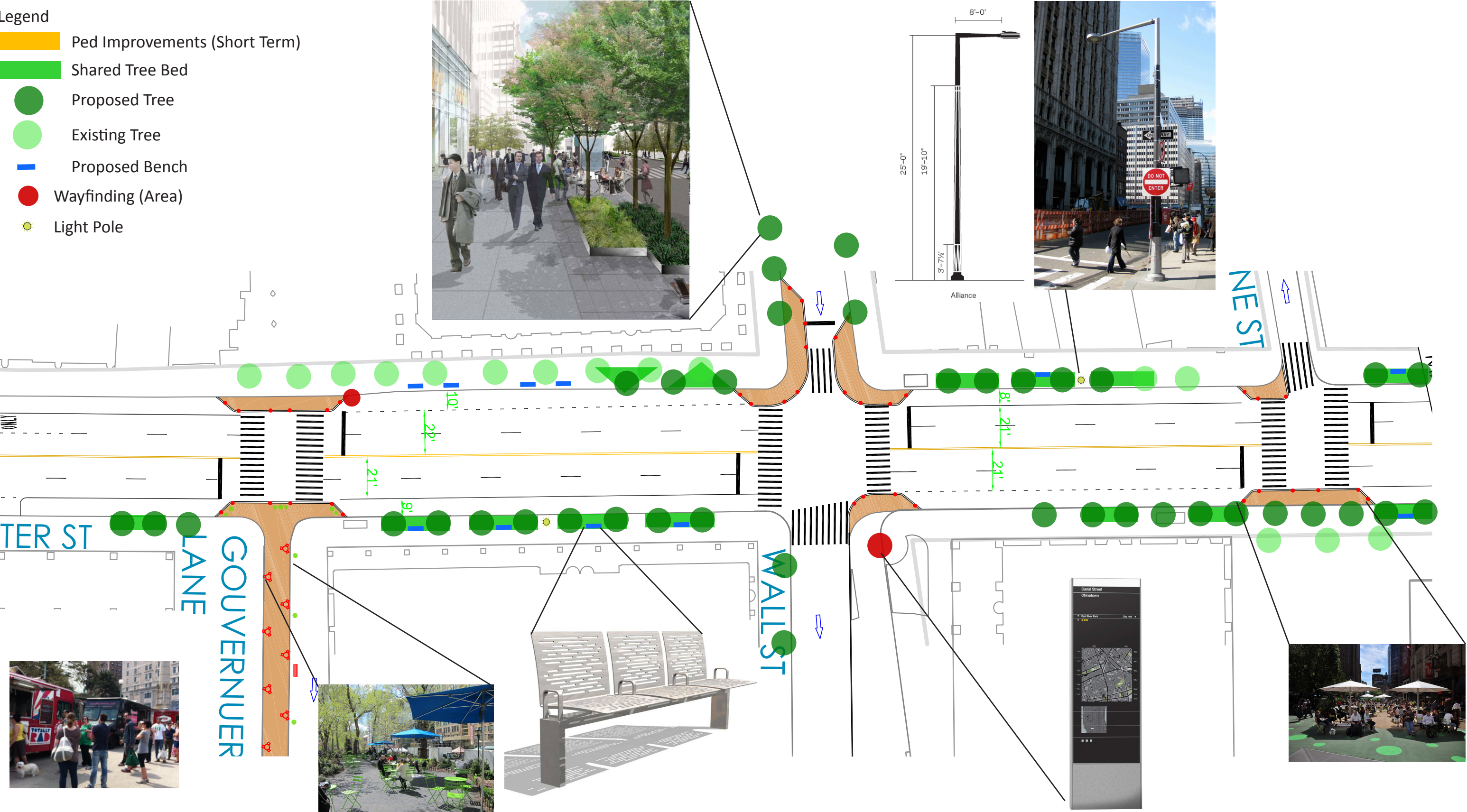
You are here/Distance

Water Street Corridor :: Corridor-wide :: Wayfinding :: Preliminary Locations

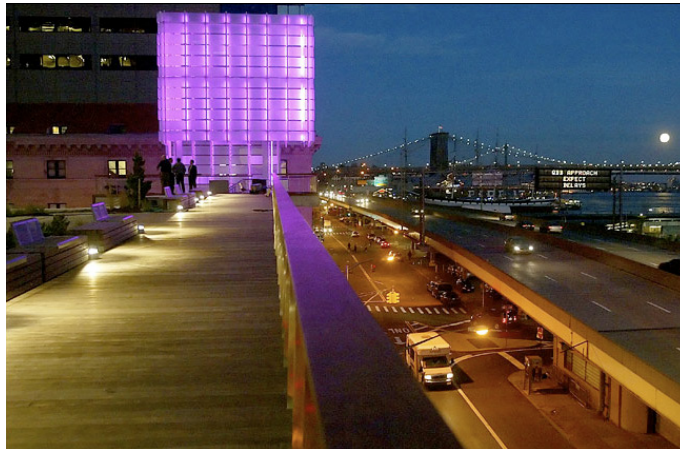


Water Street Corridor :: Conceptual Application

- Legend
- Ped Improvements (Short Term)
 - Shared Tree Bed
 - Proposed Tree
 - Existing Tree
 - Proposed Bench
 - Wayfinding (Area)
 - Light Pole



Water Street Corridor :: Questions - Next Steps



Questions / Next Steps

www.nyc.gov/dot